

top_ch6

DUT: 808S

Communication System: 802.11b; Frequency: 2437 MHz; Duty Cycle: 1:1

Medium: H2450 Medium parameters used: $f = 2437$ MHz; $\sigma = 1.776$ S/m; $\epsilon_r = 40.424$; $\rho = 1000$ kg/m³

Ambient Temperature : 22.4 °C ; Liquid Temperature : 22.2 °C

DASY5 Configuration:

- Probe: EX3DV4 - SN3970; ConvF(8.06, 8.06, 8.06); Calibrated: 2021/3/30;
- Sensor-Surface: 4mm (Mechanical Surface Detection)
- Electronics: DAE4 Sn1418; Calibrated: 2021/3/11
- Phantom: ELI v5.0; Type: QDOVA002AA; Serial: TP:1231
- Measurement SW: DASY52, Version 52.8 (7); SEMCAD X Version 14.6.10 (7164)

TOP/Area Scan (41x141x1): Interpolated grid: dx=2.000 mm, dy=2.000 mm Maximum value of SAR (interpolated) = 1.12 W/kg

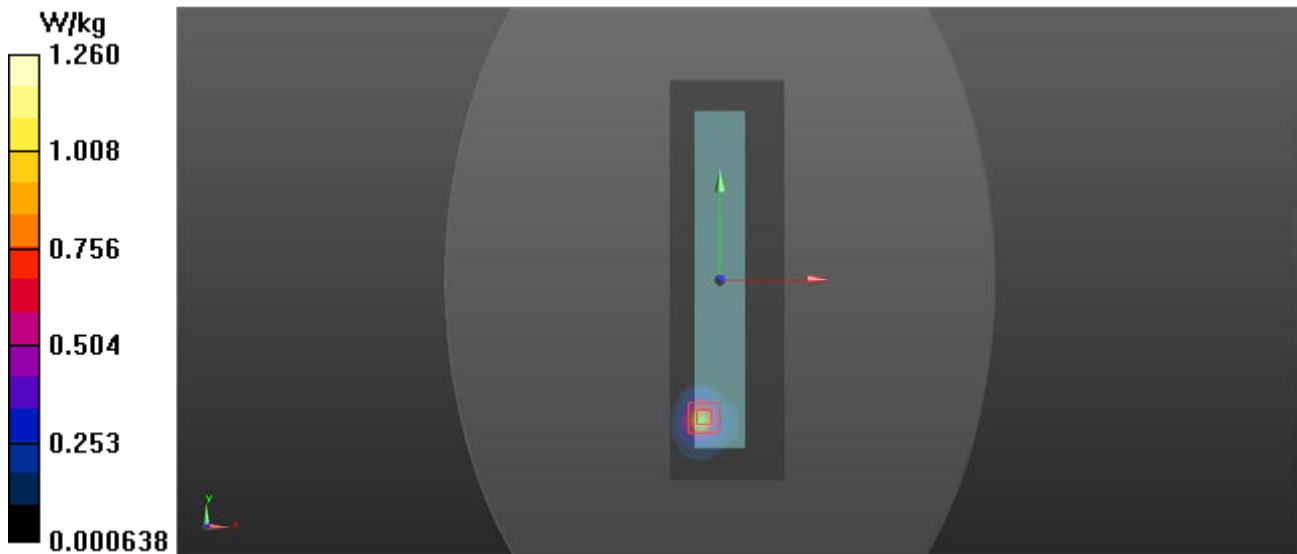
TOP/Zoom Scan (7x7x7)/Cube 0: Measurement grid: dx=5mm, dy=5mm, dz=5mm

Reference Value = 0.717 V/m; Power Drift = -0.10 dB

Peak SAR (extrapolated) = 3.18 W/kg

SAR(1 g) = 0.755 W/kg; SAR(10 g) = 0.319 W/kg

Maximum value of SAR (measured) = 1.26 W/kg



top_ch40**DUT: 808S**

Communication System: 802.11a; Frequency: 5200 MHz; Duty Cycle: 1:1.2517

Medium: H5G Medium parameters used: $f = 5200$ MHz; $\sigma = 4.696$ S/m; $\epsilon_r = 37.048$; $\rho = 1000$ kg/m³

Ambient Temperature : 22.3 °C ; Liquid Temperature : 22.0 °C

DASY5 Configuration:

- Probe: EX3DV4 - SN3970; ConvF(5.85, 5.85, 5.85); Calibrated: 2021/3/30;
- Sensor-Surface: 4mm (Mechanical Surface Detection)
- Electronics: DAE4 Sn1418; Calibrated: 2021/3/11
- Phantom: ELI v5.0; Type: QDOVA002AA; Serial: TP:1231
- Measurement SW: DASY52, Version 52.8 (7); SEMCAD X Version 14.6.10 (7164)

TOP /Area Scan (41x141x1): Interpolated grid: dx=2.000 mm, dy=2.000 mm Maximum value of SAR (interpolated) = 0.454 W/kg

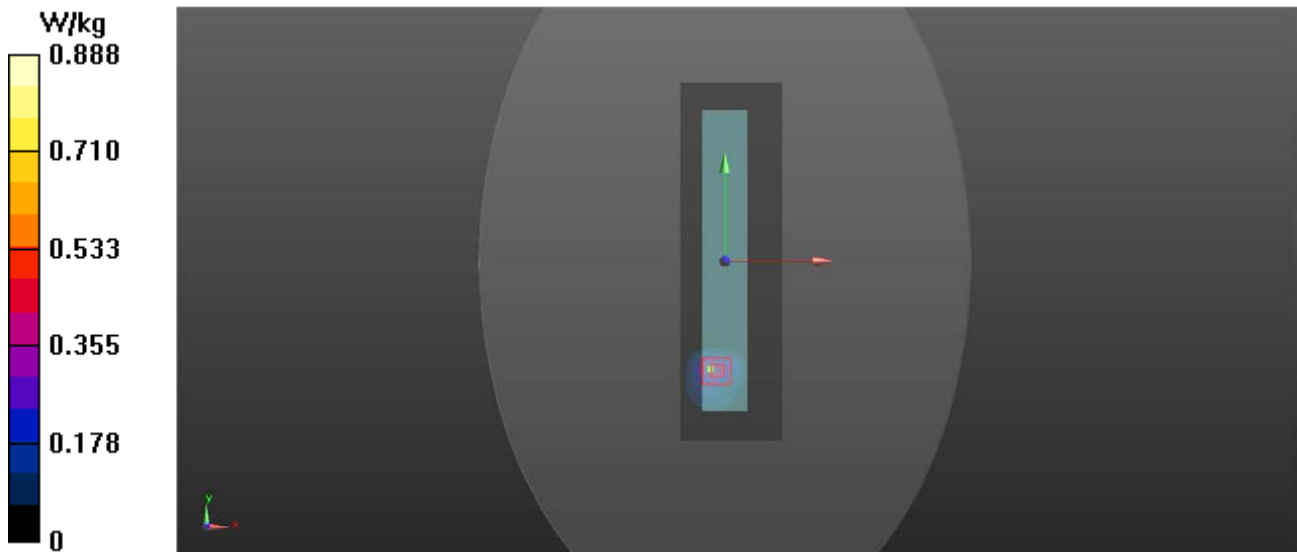
TOP /Zoom Scan (7x7x7)/Cube 0: Measurement grid: dx=4mm, dy=4mm, dz=2mm

Reference Value = 1.128 V/m; Power Drift = 0.01 dB

Peak SAR (extrapolated) = 6.49 W/kg

SAR(1 g) = 0.689 W/kg; SAR(10 g) = 0.269 W/kg

Maximum value of SAR (measured) = 0.888 W/kg



top_ch157

DUT: 808S

Communication System: 802.11a; Frequency: 5785 MHz; Duty Cycle: 1:1.2517

Medium: H5G Medium parameters used: $f = 5785$ MHz; $\sigma = 5.407$ S/m; $\epsilon_r = 35.791$; $\rho = 1000$ kg/m³

Ambient Temperature : 22.1 °C ; Liquid Temperature : 21.9 °C

DASY5 Configuration:

- Probe: EX3DV4 - SN3970; ConvF(5.2, 5.2, 5.2); Calibrated: 2021/3/30;
- Sensor-Surface: 4mm (Mechanical Surface Detection)
- Electronics: DAE4 Sn1418; Calibrated: 2021/3/11
- Phantom: ELI v5.0; Type: QDOVA002AA; Serial: TP:1231
- Measurement SW: DASY52, Version 52.8 (7); SEMCAD X Version 14.6.10 (7164)

Top/Area Scan (41x141x1): Interpolated grid: dx=2.000 mm, dy=2.000 mm Maximum value of SAR (interpolated) = 1.03 W/kg

Top/Zoom Scan (7x7x7)/Cube 0: Measurement grid: dx=4mm, dy=4mm, dz=2mm

Reference Value = 1.117 V/m; Power Drift = 0.06 dB

Peak SAR (extrapolated) = 3.54 W/kg

SAR(1 g) = 0.753 W/kg; SAR(10 g) = 0.316 W/kg

Maximum value of SAR (measured) = 1.26 W/kg

