



For MIMO antenna 1+antenna 2

Configuration Band IV (5150 - 5250MHz)

| Mode | Test channel | Power Density (dBm/MHz) | Limit (dBm/MHz) | Result |
|---|--------------|-------------------------|-----------------|--------|
| 11n(HT20) | CH36 | 4.73 | 10.171 | PASS |
| 11n(HT20) | CH40 | 4.53 | 10.171 | PASS |
| 11n(HT20) | CH48 | 4.32 | 10.171 | PASS |
| 11n(HT40) | CH38 | 2.04 | 10.171 | PASS |
| 11n(HT40) | CH46 | 1.64 | 10.171 | PASS |
| 11ac(HT20) | CH36 | 4.02 | 10.171 | PASS |
| 11ac(HT20) | CH40 | 4.64 | 10.171 | PASS |
| 11ac(HT20) | CH48 | 4.16 | 10.171 | PASS |
| 11ac(HT40) | CH38 | 2.08 | 10.171 | PASS |
| 11ac(HT40) | CH46 | 1.59 | 10.171 | PASS |
| 11ac(HT80) | CH42 | -1.05 | 10.171 | PASS |
| Note: 1 According to KDB 662911, Result power = $10\log(10^{(ant1/10)}+10^{(ant2/10)})$. 2. limit=11dBm-(direction gain-6dBi)=10.171dBm | | | | |

Note: This product supports antenna 1 and antenna 2 launch, but only support 802.11 n/ac for MIMO mode, not support 802.11 a for MIMO mode.

4.6. BAND EDGE

4.6.1. Test Specification

| | |
|--------------------------|---|
| Test Requirement: | FCC CFR47 Part 15E Section 15.407 & 15.209 & 15.205 |
| Test Method: | ANSI C63.10 2013 |
| Limit: | (1) For transmitters operating in the 5.15-5.25 GHz band: All emissions outside of the 5.15-5.35 GHz band shall not exceed an e.i.r.p. of -27 dBm/MHz. The limit of frequency below 1GHz and which fall in restricted bands should complies 15.209. |
| Test Setup: | <p>The diagram illustrates the test setup within an anechoic chamber. On the left, a transmitting device (EUT) is placed on a rotating table at a height of 1.5 meters. The table is positioned 3 meters away from a receiving antenna mounted on a variable-height antenna tower. A ground reference plane is shown at the base of the chamber. The test receiver system, including a test receiver, amplifier, and controller, is connected to the antenna tower.</p> |
| Test Mode: | Transmitting mode with modulation |
| Test Procedure: | <ol style="list-style-type: none"> 1. The EUT was placed on the top of a rotating table 1.5 meters above the ground at a 3 meter camber. The table was rotated 360 degrees to determine the position of the highest radiation. 2. The EUT was set 3 meters away from the interference-receiving antenna, which was mounted on the top of a variable-height antenna tower. 3. The antenna height is varied from one meter to four meters above the ground to determine the maximum value of the field strength. Both horizontal and vertical polarizations of the antenna are set to make the measurement. 4. For each suspected emission, the EUT was arranged to its worst case and then the antenna was tuned to heights from 1 meter to 4 meters and the rota table was turned from 0 degrees to 360 degrees to find the maximum reading. 5. The test-receiver system was set to Peak Detect Function and Specified Bandwidth with Maximum Hold Mode. 6. If the emission level of the EUT in peak mode was 10dB lower than the limit specified, then testing could be stopped and the peak values of the EUT would be reported. Otherwise the emissions that did not have 10dB margin would be re-tested one by one using peak, quasi peak or average method as specified and then reported in a data sheet. |
| Test Result: | PASS |



4.6.2. Test Instruments

| Radiated Emission Test Site (966) | | | | | |
|-----------------------------------|--------------|--------------------|---------------|------------------|-----------------|
| Name of Equipment | Manufacturer | Model | Serial Number | Calibration Date | Calibration Due |
| Receiver | R&S | ESRP3 | HKE-005 | Dec. 09, 2021 | Dec. 08, 2022 |
| Spectrum analyzer | Agilent | N9020A | HKE-048 | Dec. 09, 2021 | Dec. 08, 2022 |
| Preamplifier | EMCI | EMC051845S E | HKE-015 | Dec. 09, 2021 | Dec. 08, 2022 |
| Preamplifier | Agilent | 83051A | HKE-016 | Dec. 09, 2021 | Dec. 08, 2022 |
| Loop antenna | Schwarzbeck | FMZB 1519 B | HKE-014 | Dec. 09, 2021 | Dec. 08, 2022 |
| Broadband antenna | Schwarzbeck | VULB 9163 | HKE-012 | Dec. 09, 2021 | Dec. 08, 2022 |
| Horn antenna | Schwarzbeck | 9120D | HKE-013 | Dec. 09, 2021 | Dec. 08, 2022 |
| Antenna Mast | Keleto | CC-A-4M | N/A | N/A | N/A |
| Position controller | Taiwan MF | MF7802 | HKE-011 | Dec. 09, 2021 | Dec. 08, 2022 |
| Radiated test software | Tonscend | TS+ Rev 2.5.0.0 | HKE-082 | N/A | N/A |
| RF cable (9KHz-1GHz) | Times | 381806-001 | N/A | N/A | N/A |
| Hf antenna | Schwarzbeck | LB-180400-K F | HKE-031 | Dec. 09, 2021 | Dec. 08, 2022 |
| RF cable | Tonscend | 1-18G | HKE-099 | Dec. 09, 2021 | Dec. 08, 2022 |
| RF cable | Times | 1-40G | HKE-034 | Dec. 09, 2021 | Dec. 08, 2022 |
| Horn Antenna | Schwarzbeck | BBHA 9170 | HKE-017 | Dec. 09, 2021 | Dec. 08, 2022 |
| Spectrum analyzer | R&S | FSP40 | HKE-025 | Dec. 09, 2021 | Dec. 08, 2022 |

Note: The calibration interval of the above test instruments is 12 months and the calibrations are traceable to international system unit (SI).



4.6.3. Test Data

ANT 1

Operation Mode: 802.11a Mode with 5.2G TX CH Low

Horizontal:

| Frequency | Meter Reading | Factor | Emission Level | Limits | Margin | Detector Type |
|---|---------------|--------|----------------|----------|--------|---------------|
| (MHz) | (dBμV) | (dB) | (dBμV/m) | (dBμV/m) | (dB) | |
| 5150 | 54.19 | -2.49 | 51.7 | 74 | -22.3 | peak |
| 5150 | / | -2.49 | / | 54 | / | AVG |
| Remark: Factor = Antenna Factor + Cable Loss – Pre-amplifier. | | | | | | |

Vertical:

| Frequency | Meter Reading | Factor | Emission Level | Limits | Margin | Detector Type |
|---|---------------|--------|----------------|----------|--------|---------------|
| (MHz) | (dBμV) | (dB) | (dBμV/m) | (dBμV/m) | (dB) | |
| 5150 | 55.31 | -2.49 | 52.82 | 74 | -21.18 | peak |
| 5150 | / | -2.49 | / | 54 | / | AVG |
| Remark: Factor = Antenna Factor + Cable Loss – Pre-amplifier. | | | | | | |



Operation Mode: TX CH High with 5.2G

Horizontal:

| Frequency | Meter Reading | Factor | Emission Level | Limits | Margin | Detector Type |
|-----------|---------------|--------|----------------|----------|--------|---------------|
| (MHz) | (dBμV) | (dB) | (dBμV/m) | (dBμV/m) | (dB) | |
| 5350 | 53.67 | -2.11 | 51.56 | 74 | -22.44 | peak |
| 5350 | / | -2.11 | / | 54 | / | AVG |

Remark: Factor = Antenna Factor + Cable Loss – Pre-amplifier.

Vertical:

| Frequency | Meter Reading | Factor | Emission Level | Limits | Margin | Detector Type |
|-----------|---------------|--------|----------------|----------|--------|---------------|
| (MHz) | (dBμV) | (dB) | (dBμV/m) | (dBμV/m) | (dB) | |
| 5350 | 54.77 | -2.11 | 52.66 | 74 | -21.34 | peak |
| 5350 | / | -2.11 | / | 54 | / | AVG |

Remark: Factor = Antenna Factor + Cable Loss – Pre-amplifier.



Operation Mode: 802.11n20 Mode with 5.2G TX CH Low

Horizontal:

| Frequency | Meter Reading | Factor | Emission Level | Limits | Margin | Detector Type |
|---|---------------|--------|----------------|----------|--------|---------------|
| (MHz) | (dBμV) | (dB) | (dBμV/m) | (dBμV/m) | (dB) | |
| 5150 | 54.28 | -2.49 | 51.79 | 74 | -22.21 | peak |
| 5150 | / | -2.49 | / | 54 | / | AVG |
| Remark: Factor = Antenna Factor + Cable Loss – Pre-amplifier. | | | | | | |

Vertical:

| Frequency | Meter Reading | Factor | Emission Level | Limits | Margin | Detector Type |
|---|---------------|--------|----------------|----------|--------|---------------|
| (MHz) | (dBμV) | (dB) | (dBμV/m) | (dBμV/m) | (dB) | |
| 5150 | 52.69 | -2.49 | 50.2 | 74 | -23.8 | peak |
| 5150 | / | -2.49 | / | 54 | / | AVG |
| Remark: Factor = Antenna Factor + Cable Loss – Pre-amplifier. | | | | | | |



Operation Mode: TX CH High with 5.2G

Horizontal:

| Frequency | Meter Reading | Factor | Emission Level | Limits | Margin | Detector Type |
|---|---------------|--------|----------------|----------|--------|---------------|
| (MHz) | (dBμV) | (dB) | (dBμV/m) | (dBμV/m) | (dB) | |
| 5350 | 53.62 | -2.11 | 51.51 | 74 | -22.49 | peak |
| 5350 | / | -2.11 | / | 54 | / | AVG |
| Remark: Factor = Antenna Factor + Cable Loss – Pre-amplifier. | | | | | | |

Vertical:

| Frequency | Meter Reading | Factor | Emission Level | Limits | Margin | Detector Type |
|---|---------------|--------|----------------|----------|--------|---------------|
| (MHz) | (dBμV) | (dB) | (dBμV/m) | (dBμV/m) | (dB) | |
| 5350 | 54.16 | -2.11 | 52.05 | 74 | -21.95 | peak |
| 5350 | / | -2.11 | / | 54 | / | AVG |
| Remark: Factor = Antenna Factor + Cable Loss – Pre-amplifier. | | | | | | |



Operation Mode: 802.11 n40 Mode with 5.2G TX CH Low

Horizontal:

| Frequency | Meter Reading | Factor | Emission Level | Limits | Margin | Detector Type |
|-----------|---------------|--------|----------------|----------|--------|---------------|
| (MHz) | (dBμV) | (dB) | (dBμV/m) | (dBμV/m) | (dB) | |
| 5150 | 53.16 | -2.49 | 50.67 | 74 | -23.33 | peak |
| 5150 | / | -2.49 | / | 54 | / | AVG |

Remark: Factor = Antenna Factor + Cable Loss – Pre-amplifier.

Vertical:

| Frequency | Meter Reading | Factor | Emission Level | Limits | Margin | Detector Type |
|-----------|---------------|--------|----------------|----------|--------|---------------|
| (MHz) | (dBμV) | (dB) | (dBμV/m) | (dBμV/m) | (dB) | |
| 5150 | 53.53 | -2.49 | 51.04 | 74 | -22.96 | peak |
| 5150 | / | -2.49 | / | 54 | / | AVG |

Remark: Factor = Antenna Factor + Cable Loss – Pre-amplifier.



Operation Mode: TX CH High with 5.2G

Horizontal:

| Frequency | Meter Reading | Factor | Emission Level | Limits | Margin | Detector Type |
|-----------|---------------|--------|----------------|----------|--------|---------------|
| (MHz) | (dBμV) | (dB) | (dBμV/m) | (dBμV/m) | (dB) | |
| 5350 | 55.01 | -2.11 | 52.9 | 74 | -21.1 | peak |
| 5350 | / | -2.11 | / | 54 | / | AVG |

Remark: Factor = Antenna Factor + Cable Loss – Pre-amplifier.

Vertical:

| Frequency | Meter Reading | Factor | Emission Level | Limits | Margin | Detector Type |
|-----------|---------------|--------|----------------|----------|--------|---------------|
| (MHz) | (dBμV) | (dB) | (dBμV/m) | (dBμV/m) | (dB) | |
| 5350 | 54.28 | -2.11 | 52.17 | 74 | -21.83 | peak |
| 5350 | / | -2.11 | / | 54 | / | AVG |

Remark: Factor = Antenna Factor + Cable Loss – Pre-amplifier.



Operation Mode: 802.11 ac20 Mode with 5.2G TX CH Low

Horizontal:

| Frequency | Meter Reading | Factor | Emission Level | Limits | Margin | Detector Type |
|-----------|---------------|--------|----------------|----------|--------|---------------|
| (MHz) | (dBµV) | (dB) | (dBµV/m) | (dBµV/m) | (dB) | |
| 5150 | 53.88 | -2.49 | 51.39 | 74 | -22.61 | peak |
| 5150 | / | -2.49 | / | 54 | / | AVG |

Remark: Factor = Antenna Factor + Cable Loss – Pre-amplifier.

Vertical:

| Frequency | Meter Reading | Factor | Emission Level | Limits | Margin | Detector Type |
|-----------|---------------|--------|----------------|----------|--------|---------------|
| (MHz) | (dBµV) | (dB) | (dBµV/m) | (dBµV/m) | (dB) | |
| 5150 | 52.79 | -2.49 | 50.3 | 74 | -23.7 | peak |
| 5150 | / | -2.49 | / | 54 | / | AVG |

Remark: Factor = Antenna Factor + Cable Loss – Pre-amplifier.



Operation Mode: TX CH High with 5.2G

Horizontal:

| Frequency | Meter Reading | Factor | Emission Level | Limits | Margin | Detector Type |
|---|---------------|--------|----------------|----------|--------|---------------|
| (MHz) | (dBμV) | (dB) | (dBμV/m) | (dBμV/m) | (dB) | |
| 5350 | 55.62 | -2.11 | 53.51 | 74 | -20.49 | peak |
| 5350 | / | -2.11 | / | 54 | / | AVG |
| Remark: Factor = Antenna Factor + Cable Loss – Pre-amplifier. | | | | | | |

Vertical:

| Frequency | Meter Reading | Factor | Emission Level | Limits | Margin | Detector Type |
|---|---------------|--------|----------------|----------|--------|---------------|
| (MHz) | (dBμV) | (dB) | (dBμV/m) | (dBμV/m) | (dB) | |
| 5350 | 54.12 | -2.11 | 52.01 | 74 | -21.99 | peak |
| 5350 | / | -2.11 | / | 54 | / | AVG |
| Remark: Factor = Antenna Factor + Cable Loss – Pre-amplifier. | | | | | | |



Operation Mode: 802.11 ac40 Mode with 5.2G TX CH Low

Horizontal:

| Frequency | Meter Reading | Factor | Emission Level | Limits | Margin | Detector Type |
|---|---------------|--------|----------------|----------|--------|---------------|
| (MHz) | (dBµV) | (dB) | (dBµV/m) | (dBµV/m) | (dB) | |
| 5150 | 53.24 | -2.49 | 50.75 | 74 | -23.25 | peak |
| 5150 | / | -2.49 | / | 54 | / | AVG |
| Remark: Factor = Antenna Factor + Cable Loss – Pre-amplifier. | | | | | | |

Vertical:

| Frequency | Meter Reading | Factor | Emission Level | Limits | Margin | Detector Type |
|---|---------------|--------|----------------|----------|--------|---------------|
| (MHz) | (dBµV) | (dB) | (dBµV/m) | (dBµV/m) | (dB) | |
| 5150 | 53.19 | -2.49 | 50.7 | 74 | -23.3 | peak |
| 5150 | / | -2.49 | / | 54 | / | AVG |
| Remark: Factor = Antenna Factor + Cable Loss – Pre-amplifier. | | | | | | |



Operation Mode: TX CH High with 5.2G

Horizontal:

| Frequency | Meter Reading | Factor | Emission Level | Limits | Margin | Detector Type |
|-----------|---------------|--------|----------------|----------|--------|---------------|
| (MHz) | (dBμV) | (dB) | (dBμV/m) | (dBμV/m) | (dB) | |
| 5350 | 54.54 | -2.11 | 52.43 | 74 | -21.57 | peak |
| 5350 | / | -2.11 | / | 54 | / | AVG |

Remark: Factor = Antenna Factor + Cable Loss – Pre-amplifier.

Vertical:

| Frequency | Meter Reading | Factor | Emission Level | Limits | Margin | Detector Type |
|-----------|---------------|--------|----------------|----------|--------|---------------|
| (MHz) | (dBμV) | (dB) | (dBμV/m) | (dBμV/m) | (dB) | |
| 5350 | 53.29 | -2.11 | 51.18 | 74 | -22.82 | peak |
| 5350 | / | -2.11 | / | 54 | / | AVG |

Remark: Factor = Antenna Factor + Cable Loss – Pre-amplifier.



Operation Mode: 802.11 ac80 Mode with 5.2G TX CH Low

Horizontal:

| Frequency | Meter Reading | Factor | Emission Level | Limits | Margin | Detector Type |
|-----------|---------------|--------|----------------|----------|--------|---------------|
| (MHz) | (dBμV) | (dB) | (dBμV/m) | (dBμV/m) | (dB) | |
| 5150 | 54.19 | -2.49 | 51.7 | 74 | -22.3 | peak |
| 5150 | / | -2.49 | / | 54 | / | AVG |

Remark: Factor = Antenna Factor + Cable Loss – Pre-amplifier.

Vertical:

| Frequency | Meter Reading | Factor | Emission Level | Limits | Margin | Detector Type |
|-----------|---------------|--------|----------------|----------|--------|---------------|
| (MHz) | (dBμV) | (dB) | (dBμV/m) | (dBμV/m) | (dB) | |
| 5150 | 54.28 | -2.49 | 51.79 | 74 | -22.21 | peak |
| 5150 | / | -2.49 | / | 54 | / | AVG |

Remark: Factor = Antenna Factor + Cable Loss – Pre-amplifier.



Operation Mode: TX CH High with 5.2G

Horizontal:

| Frequency | Meter Reading | Factor | Emission Level | Limits | Margin | Detector Type |
|---|---------------|--------|----------------|----------|--------|---------------|
| (MHz) | (dBμV) | (dB) | (dBμV/m) | (dBμV/m) | (dB) | |
| 5350 | 55.28 | -2.11 | 53.17 | 74 | -20.83 | peak |
| 5350 | / | -2.11 | / | 54 | / | AVG |
| Remark: Factor = Antenna Factor + Cable Loss – Pre-amplifier. | | | | | | |

Vertical:

| Frequency | Meter Reading | Factor | Emission Level | Limits | Margin | Detector Type |
|---|---------------|--------|----------------|----------|--------|---------------|
| (MHz) | (dBμV) | (dB) | (dBμV/m) | (dBμV/m) | (dB) | |
| 5350 | 54.16 | -2.11 | 52.05 | 74 | -21.95 | peak |
| 5350 | / | -2.11 | / | 54 | / | AVG |
| Remark: Factor = Antenna Factor + Cable Loss – Pre-amplifier. | | | | | | |



ANT 2

Operation Mode: 802.11a Mode with 5.2G TX CH Low

Horizontal:

| Frequency | Meter Reading | Factor | Emission Level | Limits | Margin | Detector Type |
|---|---------------|--------|----------------|----------|--------|---------------|
| (MHz) | (dBμV) | (dB) | (dBμV/m) | (dBμV/m) | (dB) | |
| 5150 | 54.28 | -2.49 | 51.79 | 74 | -22.21 | peak |
| 5150 | / | -2.49 | / | 54 | / | AVG |
| Remark: Factor = Antenna Factor + Cable Loss – Pre-amplifier. | | | | | | |

Vertical:

| Frequency | Meter Reading | Factor | Emission Level | Limits | Margin | Detector Type |
|---|---------------|--------|----------------|----------|--------|---------------|
| (MHz) | (dBμV) | (dB) | (dBμV/m) | (dBμV/m) | (dB) | |
| 5150 | 53.97 | -2.49 | 51.48 | 74 | -22.52 | peak |
| 5150 | / | -2.49 | / | 54 | / | AVG |
| Remark: Factor = Antenna Factor + Cable Loss – Pre-amplifier. | | | | | | |



Operation Mode: TX CH High with 5.2G

Horizontal:

| Frequency | Meter Reading | Factor | Emission Level | Limits | Margin | Detector Type |
|-----------|---------------|--------|----------------|----------|--------|---------------|
| (MHz) | (dBμV) | (dB) | (dBμV/m) | (dBμV/m) | (dB) | |
| 5350 | 54.15 | -2.11 | 52.04 | 74 | -21.96 | peak |
| 5350 | / | -2.11 | / | 54 | / | AVG |

Remark: Factor = Antenna Factor + Cable Loss – Pre-amplifier.

Vertical:

| Frequency | Meter Reading | Factor | Emission Level | Limits | Margin | Detector Type |
|-----------|---------------|--------|----------------|----------|--------|---------------|
| (MHz) | (dBμV) | (dB) | (dBμV/m) | (dBμV/m) | (dB) | |
| 5350 | 53.36 | -2.11 | 51.25 | 74 | -22.75 | peak |
| 5350 | / | -2.11 | / | 54 | / | AVG |

Remark: Factor = Antenna Factor + Cable Loss – Pre-amplifier.



Operation Mode: 802.11n20 Mode with 5.2G TX CH Low

Horizontal:

| Frequency | Meter Reading | Factor | Emission Level | Limits | Margin | Detector Type |
|---|---------------|--------|----------------|----------|--------|---------------|
| (MHz) | (dBμV) | (dB) | (dBμV/m) | (dBμV/m) | (dB) | |
| 5150 | 55.25 | -2.49 | 52.76 | 74 | -21.24 | peak |
| 5150 | / | -2.49 | / | 54 | / | AVG |
| Remark: Factor = Antenna Factor + Cable Loss – Pre-amplifier. | | | | | | |

Vertical:

| Frequency | Meter Reading | Factor | Emission Level | Limits | Margin | Detector Type |
|---|---------------|--------|----------------|----------|--------|---------------|
| (MHz) | (dBμV) | (dB) | (dBμV/m) | (dBμV/m) | (dB) | |
| 5150 | 54.54 | -2.49 | 52.05 | 74 | -21.95 | peak |
| 5150 | / | -2.49 | / | 54 | / | AVG |
| Remark: Factor = Antenna Factor + Cable Loss – Pre-amplifier. | | | | | | |



Operation Mode: TX CH High with 5.2G

Horizontal:

| Frequency | Meter Reading | Factor | Emission Level | Limits | Margin | Detector Type |
|---|---------------|--------|----------------|----------|--------|---------------|
| (MHz) | (dBμV) | (dB) | (dBμV/m) | (dBμV/m) | (dB) | |
| 5350 | 53.49 | -2.11 | 51.38 | 74 | -22.62 | peak |
| 5350 | / | -2.11 | / | 54 | / | AVG |
| Remark: Factor = Antenna Factor + Cable Loss – Pre-amplifier. | | | | | | |

Vertical:

| Frequency | Meter Reading | Factor | Emission Level | Limits | Margin | Detector Type |
|---|---------------|--------|----------------|----------|--------|---------------|
| (MHz) | (dBμV) | (dB) | (dBμV/m) | (dBμV/m) | (dB) | |
| 5350 | 53.16 | -2.11 | 51.05 | 74 | -22.95 | peak |
| 5350 | / | -2.11 | / | 54 | / | AVG |
| Remark: Factor = Antenna Factor + Cable Loss – Pre-amplifier. | | | | | | |



Operation Mode: 802.11 n40 Mode with 5.2G TX CH Low

Horizontal:

| Frequency | Meter Reading | Factor | Emission Level | Limits | Margin | Detector Type |
|-----------|---------------|--------|----------------|----------|--------|---------------|
| (MHz) | (dBμV) | (dB) | (dBμV/m) | (dBμV/m) | (dB) | |
| 5150 | 54.17 | -2.49 | 51.68 | 74 | -22.32 | peak |
| 5150 | / | -2.49 | / | 54 | / | AVG |

Remark: Factor = Antenna Factor + Cable Loss – Pre-amplifier.

Vertical:

| Frequency | Meter Reading | Factor | Emission Level | Limits | Margin | Detector Type |
|-----------|---------------|--------|----------------|----------|--------|---------------|
| (MHz) | (dBμV) | (dB) | (dBμV/m) | (dBμV/m) | (dB) | |
| 5150 | 53.69 | -2.49 | 51.2 | 74 | -22.8 | peak |
| 5150 | / | -2.49 | / | 54 | / | AVG |

Remark: Factor = Antenna Factor + Cable Loss – Pre-amplifier.



Operation Mode: TX CH High with 5.2G

Horizontal:

| Frequency | Meter Reading | Factor | Emission Level | Limits | Margin | Detector Type |
|---|---------------|--------|----------------|----------|--------|---------------|
| (MHz) | (dBμV) | (dB) | (dBμV/m) | (dBμV/m) | (dB) | |
| 5350 | 53.19 | -2.11 | 51.08 | 74 | -22.92 | peak |
| 5350 | / | -2.11 | / | 54 | / | AVG |
| Remark: Factor = Antenna Factor + Cable Loss – Pre-amplifier. | | | | | | |

Vertical:

| Frequency | Meter Reading | Factor | Emission Level | Limits | Margin | Detector Type |
|---|---------------|--------|----------------|----------|--------|---------------|
| (MHz) | (dBμV) | (dB) | (dBμV/m) | (dBμV/m) | (dB) | |
| 5350 | 53.66 | -2.11 | 51.55 | 74 | -22.45 | peak |
| 5350 | / | -2.11 | / | 54 | / | AVG |
| Remark: Factor = Antenna Factor + Cable Loss – Pre-amplifier. | | | | | | |



Operation Mode: 802.11 ac20 Mode with 5.2G TX CH Low

Horizontal:

| Frequency | Meter Reading | Factor | Emission Level | Limits | Margin | Detector Type |
|---|---------------|--------|----------------|----------|--------|---------------|
| (MHz) | (dBµV) | (dB) | (dBµV/m) | (dBµV/m) | (dB) | |
| 5150 | 54.18 | -2.49 | 51.69 | 74 | -22.31 | peak |
| 5150 | / | -2.49 | / | 54 | / | AVG |
| Remark: Factor = Antenna Factor + Cable Loss – Pre-amplifier. | | | | | | |

Vertical:

| Frequency | Meter Reading | Factor | Emission Level | Limits | Margin | Detector Type |
|---|---------------|--------|----------------|----------|--------|---------------|
| (MHz) | (dBµV) | (dB) | (dBµV/m) | (dBµV/m) | (dB) | |
| 5150 | 53.24 | -2.49 | 50.75 | 74 | -23.25 | peak |
| 5150 | / | -2.49 | / | 54 | / | AVG |
| Remark: Factor = Antenna Factor + Cable Loss – Pre-amplifier. | | | | | | |



Operation Mode: TX CH High with 5.2G

Horizontal:

| Frequency | Meter Reading | Factor | Emission Level | Limits | Margin | Detector Type |
|---|---------------|--------|----------------|----------|--------|---------------|
| (MHz) | (dBμV) | (dB) | (dBμV/m) | (dBμV/m) | (dB) | |
| 5350 | 54.19 | -2.11 | 52.08 | 74 | -21.92 | peak |
| 5350 | / | -2.11 | / | 54 | / | AVG |
| Remark: Factor = Antenna Factor + Cable Loss – Pre-amplifier. | | | | | | |

Vertical:

| Frequency | Meter Reading | Factor | Emission Level | Limits | Margin | Detector Type |
|---|---------------|--------|----------------|----------|--------|---------------|
| (MHz) | (dBμV) | (dB) | (dBμV/m) | (dBμV/m) | (dB) | |
| 5350 | 53.16 | -2.11 | 51.05 | 74 | -22.95 | peak |
| 5350 | / | -2.11 | / | 54 | / | AVG |
| Remark: Factor = Antenna Factor + Cable Loss – Pre-amplifier. | | | | | | |



Operation Mode: 802.11 ac40 Mode with 5.2G TX CH Low

Horizontal:

| Frequency | Meter Reading | Factor | Emission Level | Limits | Margin | Detector Type |
|-----------|---------------|--------|----------------|----------|--------|---------------|
| (MHz) | (dBμV) | (dB) | (dBμV/m) | (dBμV/m) | (dB) | |
| 5150 | 52.28 | -2.49 | 49.79 | 74 | -24.21 | peak |
| 5150 | / | -2.49 | / | 54 | / | AVG |

Remark: Factor = Antenna Factor + Cable Loss – Pre-amplifier.

Vertical:

| Frequency | Meter Reading | Factor | Emission Level | Limits | Margin | Detector Type |
|-----------|---------------|--------|----------------|----------|--------|---------------|
| (MHz) | (dBμV) | (dB) | (dBμV/m) | (dBμV/m) | (dB) | |
| 5150 | 53.64 | -2.49 | 51.15 | 74 | -22.85 | peak |
| 5150 | / | -2.49 | / | 54 | / | AVG |

Remark: Factor = Antenna Factor + Cable Loss – Pre-amplifier.



Operation Mode: TX CH High with 5.2G

Horizontal:

| Frequency | Meter Reading | Factor | Emission Level | Limits | Margin | Detector Type |
|---|---------------|--------|----------------|----------|--------|---------------|
| (MHz) | (dBμV) | (dB) | (dBμV/m) | (dBμV/m) | (dB) | |
| 5350 | 52.64 | -2.11 | 50.53 | 74 | -23.47 | peak |
| 5350 | / | -2.11 | / | 54 | / | AVG |
| Remark: Factor = Antenna Factor + Cable Loss – Pre-amplifier. | | | | | | |

Vertical:

| Frequency | Meter Reading | Factor | Emission Level | Limits | Margin | Detector Type |
|---|---------------|--------|----------------|----------|--------|---------------|
| (MHz) | (dBμV) | (dB) | (dBμV/m) | (dBμV/m) | (dB) | |
| 5350 | 53.46 | -2.11 | 51.35 | 74 | -22.65 | peak |
| 5350 | / | -2.11 | / | 54 | / | AVG |
| Remark: Factor = Antenna Factor + Cable Loss – Pre-amplifier. | | | | | | |



Operation Mode: 802.11 ac80 Mode with 5.2G TX CH Low

Horizontal:

| Frequency | Meter Reading | Factor | Emission Level | Limits | Margin | Detector Type |
|-----------|---------------|--------|----------------|----------|--------|---------------|
| (MHz) | (dBμV) | (dB) | (dBμV/m) | (dBμV/m) | (dB) | |
| 5150 | 52.97 | -2.49 | 50.48 | 74 | -23.52 | peak |
| 5150 | / | -2.49 | / | 54 | / | AVG |

Remark: Factor = Antenna Factor + Cable Loss – Pre-amplifier.

Vertical:

| Frequency | Meter Reading | Factor | Emission Level | Limits | Margin | Detector Type |
|-----------|---------------|--------|----------------|----------|--------|---------------|
| (MHz) | (dBμV) | (dB) | (dBμV/m) | (dBμV/m) | (dB) | |
| 5150 | 51.64 | -2.49 | 49.15 | 74 | -24.85 | peak |
| 5150 | / | -2.49 | / | 54 | / | AVG |

Remark: Factor = Antenna Factor + Cable Loss – Pre-amplifier.



Operation Mode: TX CH High with 5.2G

Horizontal:

| Frequency | Meter Reading | Factor | Emission Level | Limits | Margin | Detector Type |
|---|---------------|--------|----------------|----------|--------|---------------|
| (MHz) | (dBμV) | (dB) | (dBμV/m) | (dBμV/m) | (dB) | |
| 5350 | 54.27 | -2.11 | 52.16 | 74 | -21.84 | peak |
| 5350 | / | -2.11 | / | 54 | / | AVG |
| Remark: Factor = Antenna Factor + Cable Loss – Pre-amplifier. | | | | | | |

Vertical:

| Frequency | Meter Reading | Factor | Emission Level | Limits | Margin | Detector Type |
|---|---------------|--------|----------------|----------|--------|---------------|
| (MHz) | (dBμV) | (dB) | (dBμV/m) | (dBμV/m) | (dB) | |
| 5350 | 54.33 | -2.11 | 52.22 | 74 | -21.78 | peak |
| 5350 | / | -2.11 | / | 54 | / | AVG |
| Remark: Factor = Antenna Factor + Cable Loss – Pre-amplifier. | | | | | | |



MIMO:

Operation Mode: 802.11n20 Mode with 5.2G TX CH Low

Horizontal:

| Frequency | Meter Reading | Factor | Emission Level | Limits | Margin | Detector Type |
|---|---------------|--------|----------------|----------|--------|---------------|
| (MHz) | (dBμV) | (dB) | (dBμV/m) | (dBμV/m) | (dB) | |
| 5150 | 55.25 | -2.49 | 52.76 | 74 | -21.24 | peak |
| 5150 | / | -2.49 | / | 54 | / | AVG |
| Remark: Factor = Antenna Factor + Cable Loss – Pre-amplifier. | | | | | | |

Vertical:

| Frequency | Meter Reading | Factor | Emission Level | Limits | Margin | Detector Type |
|---|---------------|--------|----------------|----------|--------|---------------|
| (MHz) | (dBμV) | (dB) | (dBμV/m) | (dBμV/m) | (dB) | |
| 5150 | 53.87 | -2.49 | 51.38 | 74 | -22.62 | peak |
| 5150 | / | -2.49 | / | 54 | / | AVG |
| Remark: Factor = Antenna Factor + Cable Loss – Pre-amplifier. | | | | | | |



Operation Mode: TX CH High with 5.2G

Horizontal:

| Frequency | Meter Reading | Factor | Emission Level | Limits | Margin | Detector Type |
|---|---------------|--------|----------------|----------|--------|---------------|
| (MHz) | (dBμV) | (dB) | (dBμV/m) | (dBμV/m) | (dB) | |
| 5350 | 53.47 | -2.11 | 51.36 | 74 | -22.64 | peak |
| 5350 | / | -2.11 | / | 54 | / | AVG |
| Remark: Factor = Antenna Factor + Cable Loss – Pre-amplifier. | | | | | | |

Vertical:

| Frequency | Meter Reading | Factor | Emission Level | Limits | Margin | Detector Type |
|---|---------------|--------|----------------|----------|--------|---------------|
| (MHz) | (dBμV) | (dB) | (dBμV/m) | (dBμV/m) | (dB) | |
| 5350 | 52.46 | -2.11 | 50.35 | 74 | -23.65 | peak |
| 5350 | / | -2.11 | / | 54 | / | AVG |
| Remark: Factor = Antenna Factor + Cable Loss – Pre-amplifier. | | | | | | |



Operation Mode: 802.11 n40 Mode with 5.2G TX CH Low

Horizontal:

| Frequency | Meter Reading | Factor | Emission Level | Limits | Margin | Detector Type |
|---|---------------|--------|----------------|----------|--------|---------------|
| (MHz) | (dBµV) | (dB) | (dBµV/m) | (dBµV/m) | (dB) | |
| 5150 | 54.19 | -2.49 | 51.7 | 74 | -22.3 | peak |
| 5150 | / | -2.49 | / | 54 | / | AVG |
| Remark: Factor = Antenna Factor + Cable Loss – Pre-amplifier. | | | | | | |

Vertical:

| Frequency | Meter Reading | Factor | Emission Level | Limits | Margin | Detector Type |
|---|---------------|--------|----------------|----------|--------|---------------|
| (MHz) | (dBµV) | (dB) | (dBµV/m) | (dBµV/m) | (dB) | |
| 5150 | 53.68 | -2.49 | 51.19 | 74 | -22.81 | peak |
| 5150 | / | -2.49 | / | 54 | / | AVG |
| Remark: Factor = Antenna Factor + Cable Loss – Pre-amplifier. | | | | | | |



Operation Mode: TX CH High with 5.2G

Horizontal:

| Frequency | Meter Reading | Factor | Emission Level | Limits | Margin | Detector Type |
|---|---------------|--------|----------------|----------|--------|---------------|
| (MHz) | (dBμV) | (dB) | (dBμV/m) | (dBμV/m) | (dB) | |
| 5350 | 54.18 | -2.11 | 52.07 | 74 | -21.93 | peak |
| 5350 | / | -2.11 | / | 54 | / | AVG |
| Remark: Factor = Antenna Factor + Cable Loss – Pre-amplifier. | | | | | | |

Vertical:

| Frequency | Meter Reading | Factor | Emission Level | Limits | Margin | Detector Type |
|---|---------------|--------|----------------|----------|--------|---------------|
| (MHz) | (dBμV) | (dB) | (dBμV/m) | (dBμV/m) | (dB) | |
| 5350 | 53.69 | -2.11 | 51.58 | 74 | -22.42 | peak |
| 5350 | / | -2.11 | / | 54 | / | AVG |
| Remark: Factor = Antenna Factor + Cable Loss – Pre-amplifier. | | | | | | |



Operation Mode: 802.11 ac20 Mode with 5.2G TX CH Low

Horizontal:

| Frequency | Meter Reading | Factor | Emission Level | Limits | Margin | Detector Type |
|---|---------------|--------|----------------|----------|--------|---------------|
| (MHz) | (dBµV) | (dB) | (dBµV/m) | (dBµV/m) | (dB) | |
| 5150 | 54.18 | -2.49 | 51.69 | 74 | -22.31 | peak |
| 5150 | / | -2.49 | / | 54 | / | AVG |
| Remark: Factor = Antenna Factor + Cable Loss – Pre-amplifier. | | | | | | |

Vertical:

| Frequency | Meter Reading | Factor | Emission Level | Limits | Margin | Detector Type |
|---|---------------|--------|----------------|----------|--------|---------------|
| (MHz) | (dBµV) | (dB) | (dBµV/m) | (dBµV/m) | (dB) | |
| 5150 | 52.49 | -2.49 | 50 | 74 | -24 | peak |
| 5150 | / | -2.49 | / | 54 | / | AVG |
| Remark: Factor = Antenna Factor + Cable Loss – Pre-amplifier. | | | | | | |



Operation Mode: TX CH High with 5.2G

Horizontal:

| Frequency | Meter Reading | Factor | Emission Level | Limits | Margin | Detector Type |
|---|---------------|--------|----------------|----------|--------|---------------|
| (MHz) | (dBμV) | (dB) | (dBμV/m) | (dBμV/m) | (dB) | |
| 5350 | 53.25 | -2.11 | 51.14 | 74 | -22.86 | peak |
| 5350 | / | -2.11 | / | 54 | / | AVG |
| Remark: Factor = Antenna Factor + Cable Loss – Pre-amplifier. | | | | | | |

Vertical:

| Frequency | Meter Reading | Factor | Emission Level | Limits | Margin | Detector Type |
|---|---------------|--------|----------------|----------|--------|---------------|
| (MHz) | (dBμV) | (dB) | (dBμV/m) | (dBμV/m) | (dB) | |
| 5350 | 52.52 | -2.11 | 50.41 | 74 | -23.59 | peak |
| 5350 | / | -2.11 | / | 54 | / | AVG |
| Remark: Factor = Antenna Factor + Cable Loss – Pre-amplifier. | | | | | | |



Operation Mode: 802.11 ac40 Mode with 5.2G TX CH Low

Horizontal:

| Frequency | Meter Reading | Factor | Emission Level | Limits | Margin | Detector Type |
|-----------|---------------|--------|----------------|----------|--------|---------------|
| (MHz) | (dBμV) | (dB) | (dBμV/m) | (dBμV/m) | (dB) | |
| 5150 | 54.79 | -2.49 | 52.3 | 74 | -21.7 | peak |
| 5150 | / | -2.49 | / | 54 | / | AVG |

Remark: Factor = Antenna Factor + Cable Loss – Pre-amplifier.

Vertical:

| Frequency | Meter Reading | Factor | Emission Level | Limits | Margin | Detector Type |
|-----------|---------------|--------|----------------|----------|--------|---------------|
| (MHz) | (dBμV) | (dB) | (dBμV/m) | (dBμV/m) | (dB) | |
| 5150 | 53.46 | -2.49 | 50.97 | 74 | -23.03 | peak |
| 5150 | / | -2.49 | / | 54 | / | AVG |

Remark: Factor = Antenna Factor + Cable Loss – Pre-amplifier.



Operation Mode: TX CH High with 5.2G

Horizontal:

| Frequency | Meter Reading | Factor | Emission Level | Limits | Margin | Detector Type |
|---|---------------|--------|----------------|----------|--------|---------------|
| (MHz) | (dBμV) | (dB) | (dBμV/m) | (dBμV/m) | (dB) | |
| 5350 | 53.19 | -2.11 | 51.08 | 74 | -22.92 | peak |
| 5350 | / | -2.11 | / | 54 | / | AVG |
| Remark: Factor = Antenna Factor + Cable Loss – Pre-amplifier. | | | | | | |

Vertical:

| Frequency | Meter Reading | Factor | Emission Level | Limits | Margin | Detector Type |
|---|---------------|--------|----------------|----------|--------|---------------|
| (MHz) | (dBμV) | (dB) | (dBμV/m) | (dBμV/m) | (dB) | |
| 5350 | 52.47 | -2.11 | 50.36 | 74 | -23.64 | peak |
| 5350 | / | -2.11 | / | 54 | / | AVG |
| Remark: Factor = Antenna Factor + Cable Loss – Pre-amplifier. | | | | | | |



Operation Mode: 802.11 ac80 Mode with 5.2G TX CH Low

Horizontal:

| Frequency | Meter Reading | Factor | Emission Level | Limits | Margin | Detector Type |
|-----------|---------------|--------|----------------|----------|--------|---------------|
| (MHz) | (dBµV) | (dB) | (dBµV/m) | (dBµV/m) | (dB) | |
| 5150 | 53.49 | -2.49 | 51 | 74 | -23 | peak |
| 5150 | / | -2.49 | / | 54 | / | AVG |

Remark: Factor = Antenna Factor + Cable Loss – Pre-amplifier.

Vertical:

| Frequency | Meter Reading | Factor | Emission Level | Limits | Margin | Detector Type |
|-----------|---------------|--------|----------------|----------|--------|---------------|
| (MHz) | (dBµV) | (dB) | (dBµV/m) | (dBµV/m) | (dB) | |
| 5150 | 54.98 | -2.49 | 52.49 | 74 | -21.51 | peak |
| 5150 | / | -2.49 | / | 54 | / | AVG |

Remark: Factor = Antenna Factor + Cable Loss – Pre-amplifier.



Operation Mode: TX CH High with 5.2G

Horizontal:

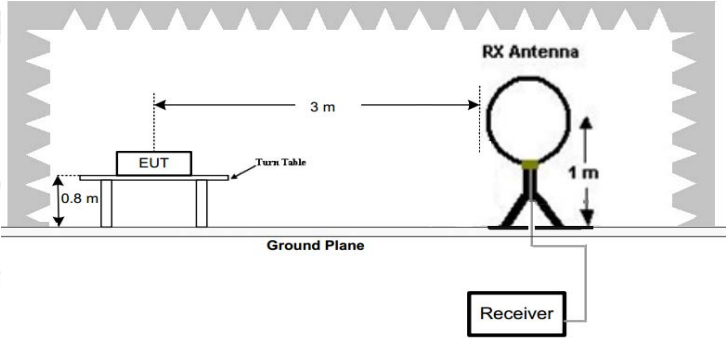
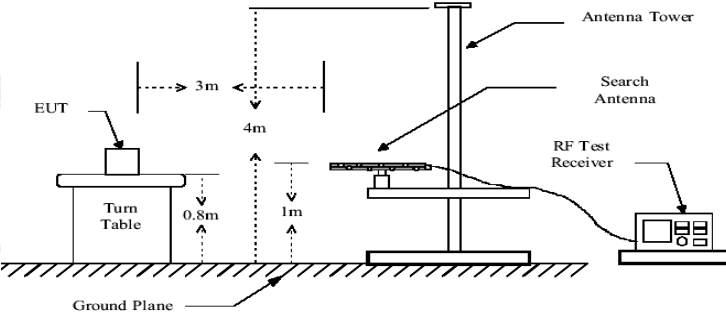
| Frequency | Meter Reading | Factor | Emission Level | Limits | Margin | Detector Type |
|---|---------------|--------|----------------|----------|--------|---------------|
| (MHz) | (dBμV) | (dB) | (dBμV/m) | (dBμV/m) | (dB) | |
| 5350 | 53.99 | -2.11 | 51.88 | 74 | -22.12 | peak |
| 5350 | / | -2.11 | / | 54 | / | AVG |
| Remark: Factor = Antenna Factor + Cable Loss – Pre-amplifier. | | | | | | |

Vertical:

| Frequency | Meter Reading | Factor | Emission Level | Limits | Margin | Detector Type |
|---|---------------|--------|----------------|----------|--------|---------------|
| (MHz) | (dBμV) | (dB) | (dBμV/m) | (dBμV/m) | (dB) | |
| 5350 | 52.64 | -2.11 | 50.53 | 74 | -23.47 | peak |
| 5350 | / | -2.11 | / | 54 | / | AVG |
| Remark: Factor = Antenna Factor + Cable Loss – Pre-amplifier. | | | | | | |

4.7. SPURIOUS EMISSION

4.7.1. Test Specification

| Test Requirement: | FCC CFR47 Part 15 Section 15.407 & 15.209 & 15.205 | | | | | | | | | | | | | | | | | | | | | | | | | | | | | |
|------------------------------|--|-----------|----------|------------------|-----|--------|--------------|------------|-------|------|------------------|---------------|------------|------|-------|------------------|------------|------------|--------|--------|------------------|------------|------|------|------|------------|------|------|------|---------------|
| Test Method: | KDB 789033 D02 v02r01 | | | | | | | | | | | | | | | | | | | | | | | | | | | | | |
| Frequency Range: | 9kHz to 40GHz | | | | | | | | | | | | | | | | | | | | | | | | | | | | | |
| Measurement Distance: | 3 m | | | | | | | | | | | | | | | | | | | | | | | | | | | | | |
| Antenna Polarization: | Horizontal & Vertical | | | | | | | | | | | | | | | | | | | | | | | | | | | | | |
| Operation mode: | Transmitting mode with modulation | | | | | | | | | | | | | | | | | | | | | | | | | | | | | |
| Receiver Setup: | <table border="1"> <thead> <tr> <th>Frequency</th> <th>Detector</th> <th>RBW</th> <th>VBW</th> <th>Remark</th> </tr> </thead> <tbody> <tr> <td>9kHz- 150kHz</td> <td>Quasi-peak</td> <td>200Hz</td> <td>1kHz</td> <td>Quasi-peak Value</td> </tr> <tr> <td>150kHz- 30MHz</td> <td>Quasi-peak</td> <td>9kHz</td> <td>30kHz</td> <td>Quasi-peak Value</td> </tr> <tr> <td>30MHz-1GHz</td> <td>Quasi-peak</td> <td>120KHz</td> <td>300KHz</td> <td>Quasi-peak Value</td> </tr> <tr> <td rowspan="2">Above 1GHz</td> <td>Peak</td> <td>1MHz</td> <td>3MHz</td> <td>Peak Value</td> </tr> <tr> <td>Peak</td> <td>1MHz</td> <td>10Hz</td> <td>Average Value</td> </tr> </tbody> </table> | Frequency | Detector | RBW | VBW | Remark | 9kHz- 150kHz | Quasi-peak | 200Hz | 1kHz | Quasi-peak Value | 150kHz- 30MHz | Quasi-peak | 9kHz | 30kHz | Quasi-peak Value | 30MHz-1GHz | Quasi-peak | 120KHz | 300KHz | Quasi-peak Value | Above 1GHz | Peak | 1MHz | 3MHz | Peak Value | Peak | 1MHz | 10Hz | Average Value |
| Frequency | Detector | RBW | VBW | Remark | | | | | | | | | | | | | | | | | | | | | | | | | | |
| 9kHz- 150kHz | Quasi-peak | 200Hz | 1kHz | Quasi-peak Value | | | | | | | | | | | | | | | | | | | | | | | | | | |
| 150kHz- 30MHz | Quasi-peak | 9kHz | 30kHz | Quasi-peak Value | | | | | | | | | | | | | | | | | | | | | | | | | | |
| 30MHz-1GHz | Quasi-peak | 120KHz | 300KHz | Quasi-peak Value | | | | | | | | | | | | | | | | | | | | | | | | | | |
| Above 1GHz | Peak | 1MHz | 3MHz | Peak Value | | | | | | | | | | | | | | | | | | | | | | | | | | |
| | Peak | 1MHz | 10Hz | Average Value | | | | | | | | | | | | | | | | | | | | | | | | | | |
| Limit: | <p>(1) For transmitters operating in the 5.15-5.25 GHz band: All emissions outside of the 5.15-5.35 GHz band shall not exceed an e.i.r.p. of -27 dBm/MHz.</p> <p>The limit of frequency below 1GHz and which fall in restricted bands should comply 15.209.</p> | | | | | | | | | | | | | | | | | | | | | | | | | | | | | |
| Test setup: | <p>For radiated emissions below 30MHz</p>  <p>30MHz to 1GHz</p>  <p>Above 1GHz</p> | | | | | | | | | | | | | | | | | | | | | | | | | | | | | |

| | |
|-------------------------------|---|
| | |
| <p>Test Procedure:</p> | <ol style="list-style-type: none"> 1. The EUT was placed on the top of a rotating table 0.8 meters above the ground at a 3 meter camber. The table was rotated 360 degrees to determine the position of the highest radiation. 2. The EUT was set 3 meters away from the interference-receiving antenna, which was mounted on the top of a variable-height antenna tower. 3. The antenna height is varied from one meter to four meters above the ground to determine the maximum value of the field strength. Both horizontal and vertical polarizations of the antenna are set to make the measurement. 4. For each suspected emission, the EUT was arranged to its worst case and then the antenna was tuned to heights from 1 meter to 4 meters and the rotatable was turned from 0 degrees to 360 degrees to find the maximum reading. 5. The test-receiver system was set to Peak Detect Function and Specified Bandwidth with Maximum Hold Mode. 6. If the emission level of the EUT in peak mode was 10dB lower than the limit specified, then testing could be stopped and the peak values of the EUT would be reported. Otherwise the emissions that did not have 10dB margin would be tested one by one using peak, quasi-peak or average method as specified and then reported in a data sheet. |
| <p>Test results:</p> | <p>PASS</p> |



4.7.2. Test Data

test mode: TX 802.11a 5180MHz

All the test modes completed for test. The worst case of Radiated Emission; the test data of this mode was reported.

Below 1GHz

Horizontal

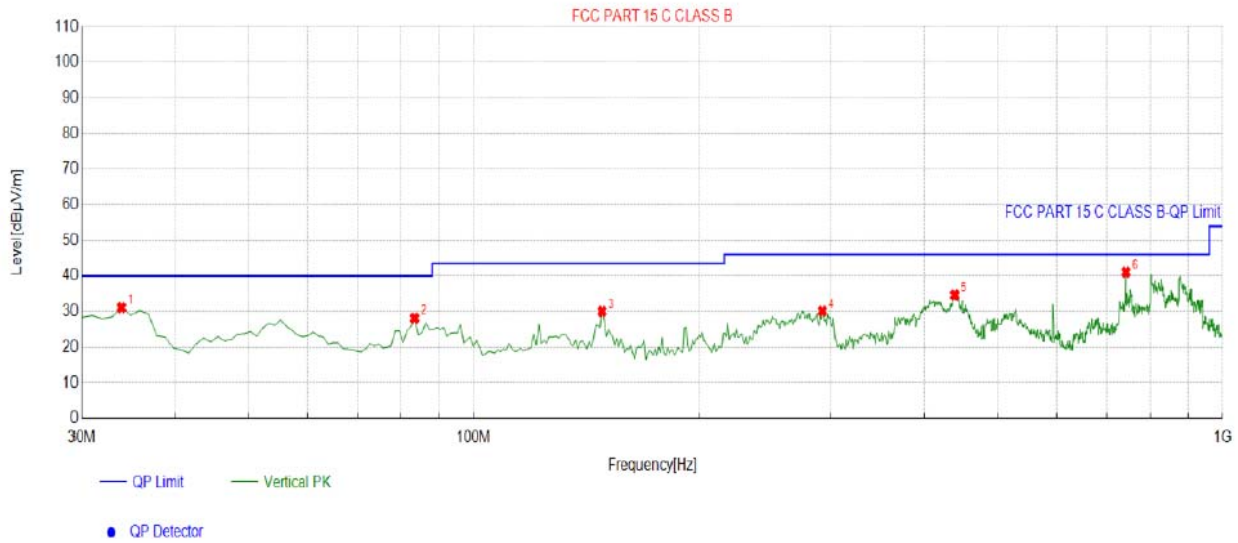


| Suspected List | | | | | | | | | |
|----------------|-------------|-------------|------------------|----------------|----------------|-------------|-------------|-----------|------------|
| NO. | Freq. [MHz] | Factor [dB] | Reading [dBµV/m] | Level [dBµV/m] | Limit [dBµV/m] | Margin [dB] | Height [cm] | Angle [°] | Polarity |
| 1 | 150.4004 | -18.91 | 47.01 | 28.10 | 43.50 | 15.40 | 100 | 50 | Horizontal |
| 2 | 248.4685 | -13.46 | 50.65 | 37.19 | 46.00 | 8.81 | 100 | 359 | Horizontal |
| 3 | 402.8529 | -10.35 | 48.65 | 38.30 | 46.00 | 7.70 | 100 | 355 | Horizontal |
| 4 | 594.1341 | -6.50 | 44.86 | 38.36 | 46.00 | 7.64 | 100 | 93 | Horizontal |
| 5 | 742.6927 | -4.02 | 44.61 | 40.59 | 46.00 | 5.41 | 100 | 276 | Horizontal |
| 6 | 877.6577 | -2.11 | 39.18 | 37.07 | 46.00 | 8.93 | 100 | 319 | Horizontal |

Remark: Factor = Cable loss + Antenna factor – Pre-amplifier; Level = Reading + Factor; Margin = Limit – Level



Vertical



| Suspected List | | | | | | | | | |
|----------------|-------------|-------------|------------------|----------------|----------------|-------------|-------------|-----------|----------|
| NO. | Freq. [MHz] | Factor [dB] | Reading [dBµV/m] | Level [dBµV/m] | Limit [dBµV/m] | Margin [dB] | Height [cm] | Angle [°] | Polarity |
| 1 | 33.8839 | -16.19 | 47.30 | 31.11 | 40.00 | 8.89 | 100 | 116 | Vertical |
| 2 | 83.4034 | -18.65 | 46.78 | 28.13 | 40.00 | 11.87 | 100 | 41 | Vertical |
| 3 | 148.4585 | -18.98 | 49.02 | 30.04 | 43.50 | 13.46 | 100 | 152 | Vertical |
| 4 | 292.1622 | -12.82 | 42.94 | 30.12 | 46.00 | 15.88 | 100 | 33 | Vertical |
| 5 | 438.7788 | -9.47 | 44.13 | 34.66 | 46.00 | 11.34 | 100 | 1 | Vertical |
| 6 | 742.6927 | -4.02 | 45.09 | 41.07 | 46.00 | 4.93 | 100 | 33 | Vertical |

Remark: Factor = Cable loss + Antenna factor – Pre-amplifier; Level = Reading + Factor; Margin = Limit – Level

Harmonics and Spurious Emissions

Frequency Range (9 kHz-30MHz)

| Frequency (MHz) | Level@3m (dBµV/m) | Limit@3m (dBµV/m) |
|-----------------|-------------------|-------------------|
| -- | -- | -- |
| -- | -- | -- |
| -- | -- | -- |
| -- | -- | -- |

Note: 1. Emission Level=Reading+ Cable loss+ Antenna factor-Amp factor.

2. The emission levels are 20 dB below the limit value, which are not reported. It is deemed to comply with the requirement.



Above 1GHz

All modes of operation were investigated and the worst-case of MIMO are reported
5.2G 802.11 a Mode
LOW CH 36

Horizontal:

| Frequency | Meter Reading | Factor | Emission Level | Limits | Margin | Detector Type |
|-----------|---------------|--------|----------------|----------|--------|---------------|
| (MHz) | (dBµV) | (dB) | (dBµV/m) | (dBµV/m) | (dB) | |
| 3647 | 60.35 | -4.59 | 55.76 | 74 | -18.24 | peak |
| 3647 | 48.25 | -4.59 | 43.66 | 54 | -10.34 | AVG |
| 10360 | 53.35 | 3.74 | 57.09 | 68.2 | -11.11 | peak |

Remark: Factor = Antenna Factor + Cable Loss – Pre-amplifier.

Vertical:

| Frequency | Meter Reading | Factor | Emission Level | Limits | Margin | Detector Type |
|-----------|---------------|--------|----------------|----------|--------|---------------|
| (MHz) | (dBµV) | (dB) | (dBµV/m) | (dBµV/m) | (dB) | |
| 3647 | 61.34 | -4.59 | 56.75 | 74 | -17.25 | peak |
| 3647 | 43.43 | -4.59 | 38.84 | 54 | -15.16 | AVG |
| 10360 | 52.97 | 3.74 | 56.71 | 68.2 | -11.49 | peak |

Remark: Factor = Antenna Factor + Cable Loss – Pre-amplifier.



MID CH40

Horizontal:

| Frequency | Meter Reading | Factor | Emission Level | Limits | Margin | Detector Type |
|-----------|---------------|--------|----------------|----------|--------|---------------|
| (MHz) | (dBμV) | (dB) | (dBμV/m) | (dBμV/m) | (dB) | |
| 3647 | 62.35 | -4.59 | 57.76 | 74 | -16.24 | peak |
| 3647 | 45.61 | -4.59 | 41.02 | 54 | -12.98 | AVG |
| 10400 | 52.78 | 3.74 | 56.52 | 68.2 | -11.68 | peak |

Remark: Factor = Antenna Factor + Cable Loss – Pre-amplifier.

Vertical:

| Frequency | Meter Reading | Factor | Emission Level | Limits | Margin | Detector Type |
|-----------|---------------|--------|----------------|----------|--------|---------------|
| (MHz) | (dBμV) | (dB) | (dBμV/m) | (dBμV/m) | (dB) | |
| 3647 | 65.28 | -4.59 | 60.69 | 74 | -13.31 | peak |
| 3647 | 43.15 | -4.59 | 38.56 | 54 | -15.44 | AVG |
| 10400 | 53.66 | 3.74 | 57.4 | 68.2 | -10.8 | peak |

Remark: Factor = Antenna Factor + Cable Loss – Pre-amplifier.



HIGH CH 48

Horizontal:

| Frequency | Meter Reading | Factor | Emission Level | Limits | Margin | Detector Type |
|-----------|---------------|--------|----------------|----------|--------|---------------|
| (MHz) | (dBμV) | (dB) | (dBμV/m) | (dBμV/m) | (dB) | |
| 3647 | 61.27 | -4.59 | 56.68 | 74 | -17.32 | peak |
| 3647 | 43.34 | -4.59 | 38.75 | 54 | -15.25 | AVG |
| 10480 | 53.98 | 3.75 | 57.73 | 68.2 | -10.47 | peak |

Remark: Factor = Antenna Factor + Cable Loss – Pre-amplifier.

Vertical:

| Frequency | Meter Reading | Factor | Emission Level | Limits | Margin | Detector Type |
|-----------|---------------|--------|----------------|----------|--------|---------------|
| (MHz) | (dBμV) | (dB) | (dBμV/m) | (dBμV/m) | (dB) | |
| 3647 | 61.34 | -4.59 | 56.75 | 74 | -17.25 | peak |
| 3647 | 45.89 | -4.59 | 41.3 | 54 | -12.7 | AVG |
| 10480 | 50.14 | 3.75 | 53.89 | 68.2 | -14.31 | peak |

Remark: Factor = Antenna Factor + Cable Loss – Pre-amplifier.

Remark:

- (1) Measuring frequencies from 1 GHz to the 40 GHz.
- (2) "F" denotes fundamental frequency; "H" denotes spurious frequency; "E" denotes band edge frequency.
- (3) * denotes emission frequency which appearing within the Restricted Bands specified in provision of 15.205, then the general radiated emission limits in 15.209 apply.
- (4) The emissions are attenuated more than 20dB below the permissible limits are not record in the report.
- (5) The IF bandwidth of EMI Test Receiver between 30MHz to 1GHz was 120KHz, 1 MHz for measuring above 1 GHz, below 30MHz was 10KHz.
- (6) When the test results of Peak Detected below the limits of Average Detected, the Average Detected is not need completed. For example: Top Channel at Fundamental 73.16dBuV/m(PK Value) <93.98(AV Limit), at harmonic 53.20 dBuV/m(PK Value) <54 dBuV/m(AV Limit), the Average Detected not need to completed.



5.2G 802.11n20 Mode

LOW CH 36

Horizontal:

| Frequency | Meter Reading | Factor | Emission Level | Limits | Margin | Detector Type |
|-----------|---------------|--------|----------------|----------|--------|---------------|
| (MHz) | (dBμV) | (dB) | (dBμV/m) | (dBμV/m) | (dB) | |
| 3647 | 61.34 | -4.59 | 56.75 | 74 | -17.25 | peak |
| 3647 | 47.28 | -4.59 | 42.69 | 54 | -11.31 | AVG |
| 10360 | 51.24 | 3.74 | 54.98 | 68.2 | -13.22 | peak |

Remark: Factor = Antenna Factor + Cable Loss – Pre-amplifier.

Vertical:

| Frequency | Meter Reading | Factor | Emission Level | Limits | Margin | Detector Type |
|-----------|---------------|--------|----------------|----------|--------|---------------|
| (MHz) | (dBμV) | (dB) | (dBμV/m) | (dBμV/m) | (dB) | |
| 3647 | 61.4 | -4.59 | 56.81 | 74 | -17.19 | peak |
| 3647 | 45.16 | -4.59 | 40.57 | 54 | -13.43 | AVG |
| 10360 | 51.87 | 3.74 | 55.61 | 68.2 | -12.59 | peak |

Remark: Factor = Antenna Factor + Cable Loss – Pre-amplifier.



MID CH40

Horizontal:

| Frequency | Meter Reading | Factor | Emission Level | Limits | Margin | Detector Type |
|-----------|---------------|--------|----------------|----------|--------|---------------|
| (MHz) | (dBµV) | (dB) | (dBµV/m) | (dBµV/m) | (dB) | |
| 3647 | 58.69 | -4.59 | 54.1 | 74 | -19.9 | peak |
| 3647 | 43.65 | -4.59 | 39.06 | 54 | -14.94 | AVG |
| 10400 | 53.42 | 3.74 | 57.16 | 68.2 | -11.04 | peak |

Remark: Factor = Antenna Factor + Cable Loss – Pre-amplifier.

Vertical:

| Frequency | Meter Reading | Factor | Emission Level | Limits | Margin | Detector Type |
|-----------|---------------|--------|----------------|----------|--------|---------------|
| (MHz) | (dBµV) | (dB) | (dBµV/m) | (dBµV/m) | (dB) | |
| 3647 | 60.37 | -4.59 | 55.78 | 74 | -18.22 | peak |
| 3647 | 45.09 | -4.59 | 40.5 | 54 | -13.5 | AVG |
| 10400 | 53.11 | 3.74 | 56.85 | 68.2 | -11.35 | peak |

Remark: Factor = Antenna Factor + Cable Loss – Pre-amplifier.



HIGH CH 48

Horizontal:

| Frequency | Meter Reading | Factor | Emission Level | Limits | Margin | Detector Type |
|-----------|---------------|--------|----------------|----------|--------|---------------|
| (MHz) | (dBµV) | (dB) | (dBµV/m) | (dBµV/m) | (dB) | |
| 3647 | 60.33 | -4.59 | 55.74 | 74 | -18.26 | peak |
| 3647 | 45.16 | -4.59 | 40.57 | 54 | -13.43 | AVG |
| 10480 | 56.82 | 3.75 | 60.57 | 68.2 | -7.63 | peak |

Remark: Factor = Antenna Factor + Cable Loss – Pre-amplifier.

Vertical:

| Frequency | Meter Reading | Factor | Emission Level | Limits | Margin | Detector Type |
|-----------|---------------|--------|----------------|----------|--------|---------------|
| (MHz) | (dBµV) | (dB) | (dBµV/m) | (dBµV/m) | (dB) | |
| 3647 | 60.17 | -4.59 | 55.58 | 74 | -18.42 | peak |
| 3647 | 46.28 | -4.59 | 41.69 | 54 | -12.31 | AVG |
| 10480 | 51.51 | 3.75 | 55.26 | 68.2 | -12.94 | peak |

Remark: Factor = Antenna Factor + Cable Loss – Pre-amplifier.

Remark:

- (1) Measuring frequencies from 1 GHz to the 40 GHz.
- (2) "F" denotes fundamental frequency; "H" denotes spurious frequency; "E" denotes band edge frequency.
- (3) * denotes emission frequency which appearing within the Restricted Bands specified in provision of 15.205, then the general radiated emission limits in 15.209 apply.
- (4) The emissions are attenuated more than 20dB below the permissible limits are not record in the report.
- (5) The IF bandwidth of EMI Test Receiver between 30MHz to 1GHz was 120KHz, 1 MHz for measuring above 1 GHz, below 30MHz was 10KHz.
- (6) When the test results of Peak Detected below the limits of Average Detected, the Average Detected is not need completed. For example: Top Channel at Fundamental 73.16dBuV/m(PK Value) <93.98(AV Limit), at harmonic 53.20 dBuV/m(PK Value) <54 dBuV/m(AV Limit), the Average Detected not need to completed.



5.2G 802.11n40 Mode

LOW CH 38

Horizontal:

| Frequency | Meter Reading | Factor | Emission Level | Limits | Margin | Detector Type |
|-----------|---------------|--------|----------------|----------|--------|---------------|
| (MHz) | (dBμV) | (dB) | (dBμV/m) | (dBμV/m) | (dB) | |
| 3647 | 60.28 | -4.59 | 55.69 | 74 | -18.31 | peak |
| 3647 | 44.19 | -4.59 | 39.6 | 54 | -14.4 | AVG |
| 10360 | 51.24 | 3.74 | 54.98 | 68.2 | -13.22 | peak |

Remark: Factor = Antenna Factor + Cable Loss – Pre-amplifier.

Vertical:

| Frequency | Meter Reading | Factor | Emission Level | Limits | Margin | Detector Type |
|-----------|---------------|--------|----------------|----------|--------|---------------|
| (MHz) | (dBμV) | (dB) | (dBμV/m) | (dBμV/m) | (dB) | |
| 3647 | 60.35 | -4.59 | 55.76 | 74 | -18.24 | peak |
| 3647 | 44.18 | -4.59 | 39.59 | 54 | -14.41 | AVG |
| 10360 | 52.52 | 3.74 | 56.26 | 68.2 | -11.94 | peak |

Remark: Factor = Antenna Factor + Cable Loss – Pre-amplifier.



HIGH CH 46

Horizontal:

| Frequency | Meter Reading | Factor | Emission Level | Limits | Margin | Detector Type |
|-----------|---------------|--------|----------------|----------|--------|---------------|
| (MHz) | (dBµV) | (dB) | (dBµV/m) | (dBµV/m) | (dB) | |
| 3647 | 59.68 | -4.59 | 55.09 | 74 | -18.91 | peak |
| 3647 | 45.72 | -4.59 | 41.13 | 54 | -12.87 | AVG |
| 10480 | 53 | 3.75 | 56.75 | 68.2 | -11.45 | peak |

Remark: Factor = Antenna Factor + Cable Loss – Pre-amplifier.

Vertical:

| Frequency | Meter Reading | Factor | Emission Level | Limits | Margin | Detector Type |
|-----------|---------------|--------|----------------|----------|--------|---------------|
| (MHz) | (dBµV) | (dB) | (dBµV/m) | (dBµV/m) | (dB) | |
| 3647 | 61.27 | -4.59 | 56.68 | 74 | -17.32 | peak |
| 3647 | 47.28 | -4.59 | 42.69 | 54 | -11.31 | AVG |
| 10480 | 53.66 | 3.75 | 57.41 | 68.2 | -10.79 | peak |

Remark: Factor = Antenna Factor + Cable Loss – Pre-amplifier.

Remark:

- (1) Measuring frequencies from 1 GHz to the 40 GHz.
- (2) "F" denotes fundamental frequency; "H" denotes spurious frequency; "E" denotes band edge frequency.
- (3) * denotes emission frequency which appearing within the Restricted Bands specified in provision of 15.205, then the general radiated emission limits in 15.209 apply.
- (4) The emissions are attenuated more than 20dB below the permissible limits are not record in the report.
- (5) The IF bandwidth of EMI Test Receiver between 30MHz to 1GHz was 120KHz, 1 MHz for measuring above 1 GHz, below 30MHz was 10KHz.
- (6) When the test results of Peak Detected below the limits of Average Detected, the Average Detected is not need completed. For example: Top Channel at Fundamental 73.16dBuV/m(PK Value) <93.98(AV Limit), at harmonic 53.20 dBuV/m(PK Value) <54 dBuV/m(AV Limit), the Average Detected not need to completed.



5.2G 802.11ac20 Mode

LOW CH 36

Horizontal:

| Frequency | Meter Reading | Factor | Emission Level | Limits | Margin | Detector Type |
|-----------|---------------|--------|----------------|----------|--------|---------------|
| (MHz) | (dBμV) | (dB) | (dBμV/m) | (dBμV/m) | (dB) | |
| 3647 | 61.28 | -4.59 | 56.69 | 74 | -17.31 | peak |
| 3647 | 45.12 | -4.59 | 40.53 | 54 | -13.47 | AVG |
| 10360 | 52.08 | 3.74 | 55.82 | 68.2 | -12.38 | peak |

Remark: Factor = Antenna Factor + Cable Loss – Pre-amplifier.

Vertical:

| Frequency | Meter Reading | Factor | Emission Level | Limits | Margin | Detector Type |
|-----------|---------------|--------|----------------|----------|--------|---------------|
| (MHz) | (dBμV) | (dB) | (dBμV/m) | (dBμV/m) | (dB) | |
| 3647 | 60.98 | -4.59 | 56.39 | 74 | -17.61 | peak |
| 3647 | 42.35 | -4.59 | 37.76 | 54 | -16.24 | AVG |
| 10360 | 52.52 | 3.74 | 56.26 | 68.2 | -11.94 | peak |

Remark: Factor = Antenna Factor + Cable Loss – Pre-amplifier.



MID CH40

Horizontal:

| Frequency | Meter Reading | Factor | Emission Level | Limits | Margin | Detector Type |
|-----------|---------------|--------|----------------|----------|--------|---------------|
| (MHz) | (dBμV) | (dB) | (dBμV/m) | (dBμV/m) | (dB) | |
| 3647 | 59.72 | -4.59 | 55.13 | 74 | -18.87 | peak |
| 3647 | 46.35 | -4.59 | 41.76 | 54 | -12.24 | AVG |
| 10400 | 54 | 3.74 | 57.74 | 68.2 | -10.46 | peak |

Remark: Factor = Antenna Factor + Cable Loss – Pre-amplifier.

Vertical:

| Frequency | Meter Reading | Factor | Emission Level | Limits | Margin | Detector Type |
|-----------|---------------|--------|----------------|----------|--------|---------------|
| (MHz) | (dBμV) | (dB) | (dBμV/m) | (dBμV/m) | (dB) | |
| 3647 | 62.35 | -4.59 | 57.76 | 74 | -16.24 | peak |
| 3647 | 44.14 | -4.59 | 39.55 | 54 | -14.45 | AVG |
| 10400 | 54.02 | 3.74 | 57.76 | 68.2 | -10.44 | peak |

Remark: Factor = Antenna Factor + Cable Loss – Pre-amplifier.



HIGH CH 48

Horizontal:

| Frequency | Meter Reading | Factor | Emission Level | Limits | Margin | Detector Type |
|-----------|---------------|--------|----------------|----------|--------|---------------|
| (MHz) | (dBµV) | (dB) | (dBµV/m) | (dBµV/m) | (dB) | |
| 3647 | 61.03 | -4.59 | 56.44 | 74 | -17.56 | peak |
| 3647 | 45.67 | -4.59 | 41.08 | 54 | -12.92 | AVG |
| 10480 | 52.11 | 3.75 | 55.86 | 68.2 | -12.34 | peak |

Remark: Factor = Antenna Factor + Cable Loss – Pre-amplifier.

Vertical:

| Frequency | Meter Reading | Factor | Emission Level | Limits | Margin | Detector Type |
|-----------|---------------|--------|----------------|----------|--------|---------------|
| (MHz) | (dBµV) | (dB) | (dBµV/m) | (dBµV/m) | (dB) | |
| 3647 | 62.35 | -4.59 | 57.76 | 74 | -16.24 | peak |
| 3647 | 44.18 | -4.59 | 39.59 | 54 | -14.41 | AVG |
| 10480 | 52.52 | 3.75 | 56.27 | 68.2 | -11.93 | peak |

Remark: Factor = Antenna Factor + Cable Loss – Pre-amplifier.

Remark:

- (1) Measuring frequencies from 1 GHz to the 40 GHz.
- (2) "F" denotes fundamental frequency; "H" denotes spurious frequency; "E" denotes band edge frequency.
- (3) * denotes emission frequency which appearing within the Restricted Bands specified in provision of 15.205, then the general radiated emission limits in 15.209 apply.
- (4) The emissions are attenuated more than 20dB below the permissible limits are not record in the report.
- (5) The IF bandwidth of EMI Test Receiver between 30MHz to 1GHz was 120KHz, 1 MHz for measuring above 1 GHz, below 30MHz was 10KHz.
- (6) When the test results of Peak Detected below the limits of Average Detected, the Average Detected is not need completed. For example: Top Channel at Fundamental 73.16dBuV/m(PK Value) <93.98(AV Limit), at harmonic 53.20 dBuV/m(PK Value) <54 dBuV/m(AV Limit), the Average Detected not need to completed.



5.2G 802.11ac40 Mode

LOW CH 38

Horizontal:

| Frequency | Meter Reading | Factor | Emission Level | Limits | Margin | Detector Type |
|-----------|---------------|--------|----------------|----------|--------|---------------|
| (MHz) | (dBµV) | (dB) | (dBµV/m) | (dBµV/m) | (dB) | |
| 3647 | 62.35 | -4.59 | 57.76 | 74 | -16.24 | peak |
| 3647 | 46.19 | -4.59 | 41.6 | 54 | -12.4 | AVG |
| 10360 | 54.54 | 3.74 | 58.28 | 68.2 | -9.92 | peak |

Remark: Factor = Antenna Factor + Cable Loss – Pre-amplifier.

Vertical:

| Frequency | Meter Reading | Factor | Emission Level | Limits | Margin | Detector Type |
|-----------|---------------|--------|----------------|----------|--------|---------------|
| (MHz) | (dBµV) | (dB) | (dBµV/m) | (dBµV/m) | (dB) | |
| 3647 | 59.34 | -4.59 | 54.75 | 74 | -19.25 | peak |
| 3647 | 46.15 | -4.59 | 41.56 | 54 | -12.44 | AVG |
| 10360 | 52.82 | 3.74 | 56.56 | 68.2 | -11.64 | peak |

Remark: Factor = Antenna Factor + Cable Loss – Pre-amplifier.



HIGH CH 46

Horizontal:

| Frequency (MHz) | Meter Reading (dBμV) | Factor (dB) | Emission Level (dBμV/m) | Limits (dBμV/m) | Margin (dB) | Detector Type |
|--------------------|-------------------------|----------------|----------------------------|--------------------|----------------|---------------|
| 3647 | 62.42 | -4.59 | 57.83 | 74 | -16.17 | |
| 3647 | 46.38 | -4.59 | 41.79 | 54 | -12.21 | AVG |
| 10480 | 55.58 | 3.75 | 59.33 | 68.2 | -8.87 | peak |

Remark: Factor = Antenna Factor + Cable Loss – Pre-amplifier.

Vertical:

| Frequency (MHz) | Meter Reading (dBμV) | Factor (dB) | Emission Level (dBμV/m) | Limits (dBμV/m) | Margin (dB) | Detector Type |
|--------------------|-------------------------|----------------|----------------------------|--------------------|----------------|---------------|
| 3647 | 60.35 | -4.59 | 55.76 | 74 | -18.24 | |
| 3647 | 46.13 | -4.59 | 41.54 | 54 | -12.46 | AVG |
| 10480 | 53.66 | 3.75 | 57.41 | 68.2 | -10.79 | peak |

Remark: Factor = Antenna Factor + Cable Loss – Pre-amplifier.

Remark:

- (1) Measuring frequencies from 1 GHz to the 40 GHz.
- (2) "F" denotes fundamental frequency; "H" denotes spurious frequency; "E" denotes band edge frequency.
- (3) * denotes emission frequency which appearing within the Restricted Bands specified in provision of 15.205, then the general radiated emission limits in 15.209 apply.
- (4) The emissions are attenuated more than 20dB below the permissible limits are not record in the report.
- (5) The IF bandwidth of EMI Test Receiver between 30MHz to 1GHz was 120KHz, 1 MHz for measuring above 1 GHz, below 30MHz was 10KHz.
- (6) When the test results of Peak Detected below the limits of Average Detected, the Average Detected is not need completed. For example: Top Channel at Fundamental 73.16dBuV/m(PK Value) <93.98(AV Limit), at harmonic 53.20 dBuV/m(PK Value) <54 dBuV/m(AV Limit), the Average Detected not need to completed.



5.2G 802.11ac80 Mode

CH 42

Horizontal:

| Frequency | Meter Reading | Factor | Emission Level | Limits | Margin | Detector Type |
|-----------|---------------|--------|----------------|----------|--------|---------------|
| (MHz) | (dBμV) | (dB) | (dBμV/m) | (dBμV/m) | (dB) | |
| 3647 | 61.25 | -4.59 | 56.66 | 74 | -17.34 | peak |
| 3647 | 46.13 | -4.59 | 41.54 | 54 | -12.46 | AVG |
| 10360 | 55.82 | 3.74 | 59.56 | 68.2 | -8.64 | peak |

Remark: Factor = Antenna Factor + Cable Loss – Pre-amplifier.

Vertical:

| Frequency | Meter Reading | Factor | Emission Level | Limits | Margin | Detector Type |
|-----------|---------------|--------|----------------|----------|--------|---------------|
| (MHz) | (dBμV) | (dB) | (dBμV/m) | (dBμV/m) | (dB) | |
| 3647 | 61.35 | -4.59 | 56.76 | 74 | -17.24 | peak |
| 3647 | 46.13 | -4.59 | 41.54 | 54 | -12.46 | AVG |
| 10360 | 51.24 | 3.74 | 54.98 | 68.2 | -13.22 | peak |

Remark: Factor = Antenna Factor + Cable Loss – Pre-amplifier.

Remark:

- (1) Measuring frequencies from 1 GHz to the 40 GHz.
- (2) "F" denotes fundamental frequency; "H" denotes spurious frequency; "E" denotes band edge frequency.
- (3) * denotes emission frequency which appearing within the Restricted Bands specified in provision of 15.205, then the general radiated emission limits in 15.209 apply.
- (4) The emissions are attenuated more than 20dB below the permissible limits are not record in the report.
- (5) The IF bandwidth of EMI Test Receiver between 30MHz to 1GHz was 120KHz, 1 MHz for measuring above 1 GHz, below 30MHz was 10KHz.
- (6) When the test results of Peak Detected below the limits of Average Detected, the Average Detected is not need completed. For example: Top Channel at Fundamental 73.16dBuV/m(PK Value) <93.98(AV Limit), at harmonic 53.20 dBuV/m(PK Value) <54 dBuV/m(AV Limit), the Average Detected not need to completed.



4.8. FREQUENCY STABILITY MEASUREMENT

4.8.1. Test Specification

| | |
|--------------------------|--|
| Test Requirement: | FCC Part15 Section 15.407(g) |
| Test Method: | ANSI C63.10: 2013 |
| Limit: | The frequency tolerance shall be maintained within the band of operation frequency over a temperature variation of 0 degrees to 35 degrees C at normal supply voltage, and for a variation in the primary supply voltage from 85% to 115% of the rated supply voltage at a temperature of 20 degrees C. |
| Test Setup: | <pre> graph LR SA[Spectrum Analyzer] --- EUT[EUT] subgraph TC [Temperature Chamber] EUT end P[AC/DC Power supply] --- EUT </pre> |
| Test Procedure: | The EUT was placed inside the environmental test chamber and powered by nominal AC/DC voltage. b. Turn the EUT on and couple its output to a spectrum analyzer. c. Turn the EUT off and set the chamber to the highest temperature specified. d. Allow sufficient time (approximately 30 min) for the temperature of the chamber to stabilize. e. Repeat step 2 and 3 with the temperature chamber set to the lowest temperature. f. The test chamber was allowed to stabilize at +20 degree C for a minimum of 30 minutes. The supply voltage was then adjusted on the EUT from 85% to 115% and the frequency record. |
| Test Result: | PASS |
| Remark: | N/A |



Test Result as follows:

| Mode | Voltage (V) | FHL (5180MHz) | Deviation (KHz) | FHH (5240MHz) | Deviation (KHz) |
|-----------|-------------|---------------|-----------------|---------------|-----------------|
| 5.2G Band | 4.50V | 5179.973 | -27 | 5240.040 | 40 |
| | 5.00V | 5180.012 | 12 | 5240.019 | 19 |
| | 5.50V | 5180.033 | 33 | 5239.955 | -45 |

| Mode | Temperature (°C) | FHL (5180MHz) | Deviation (KHz) | FHH (5240MHz) | Deviation (KHz) |
|-----------|------------------|---------------|-----------------|---------------|-----------------|
| 5.2G Band | -30 | 5179.961 | -39 | 5239.984 | -16 |
| | -20 | 5179.999 | -1 | 5240.045 | 45 |
| | -10 | 5179.998 | -2 | 5239.957 | -43 |
| | 0 | 5180.022 | 22 | 5239.961 | -39 |
| | 10 | 5180.011 | 11 | 5239.970 | -30 |
| | 20 | 5180.019 | 19 | 5239.976 | -24 |
| | 30 | 5180.048 | 48 | 5240.050 | 50 |
| | 40 | 5179.984 | -16 | 5239.985 | -15 |
| | 50 | 5179.988 | -12 | 5239.988 | -12 |

The results shown in this test report refer only to the sample(s) tested unless otherwise stated and the sample(s) are retained for 30 days only. The document is issued by HUAK, this document cannot be reproduced except in full with our prior written permission. The more details and the authenticity of the report will be confirmed at <http://www.cer-mark.com>.

TEL : +86-755 2302 9901 FAX : +86-755 2302 9901 E-mail : service@cer-mark.com

Add: 1-2F., Building B2, Junfeng Zhongcheng Zhizao Innovation Park, Heping Community, Fuhai Street, Bao'an District, Shenzhen, Guangdong, China

4.9. ANTENNA REQUIREMENT

Standard Applicable

For intentional device, according to FCC 47 CFR Section 15.203, an intentional radiator shall be designed to ensure that no antenna other than that furnished by the responsible party shall be used with the device. And according to FCC 47 CFR Section 15.249, if transmitting antennas of directional gain greater than 6dBi are used, the power shall be reduced by the amount in dB that the directional gain of the antenna exceeds 6dBi.

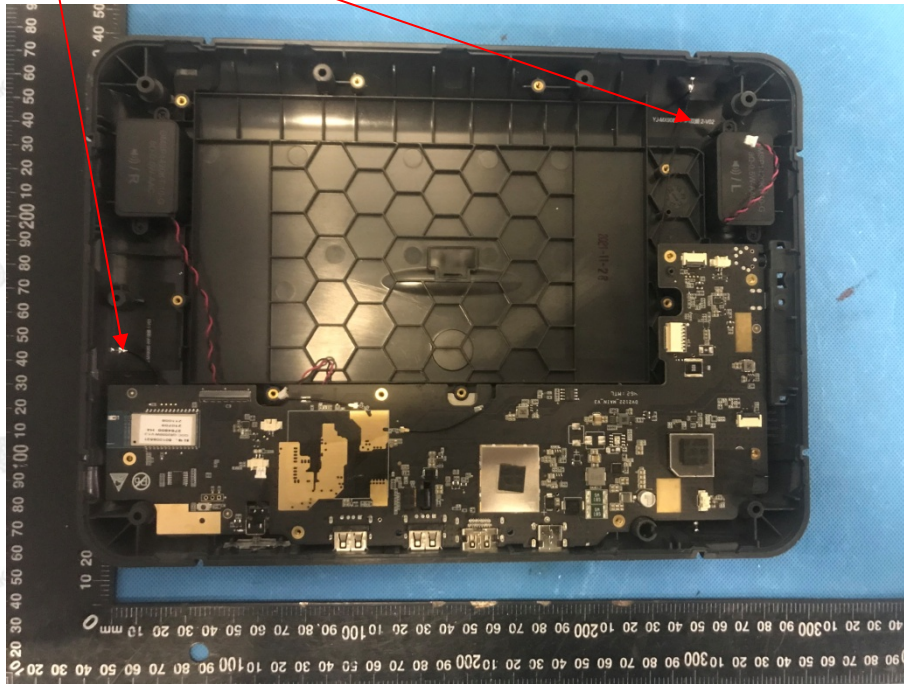
Refer to statement below for compliance.

The manufacturer may design the unit so that the user can replace a broken antenna, but the use of a standard antenna jack or electrical connector is prohibited. Further, this requirement does not apply to intentional radiators that must be professionally installed.

Antenna Connected Construction

The antenna used in this product is a Internal Antenna, need professional installation, It conforms to the standard requirements. and the best case gain of the antenna is Antenna port 1:2.6dBi and Antenna port 2:3.4dBi.

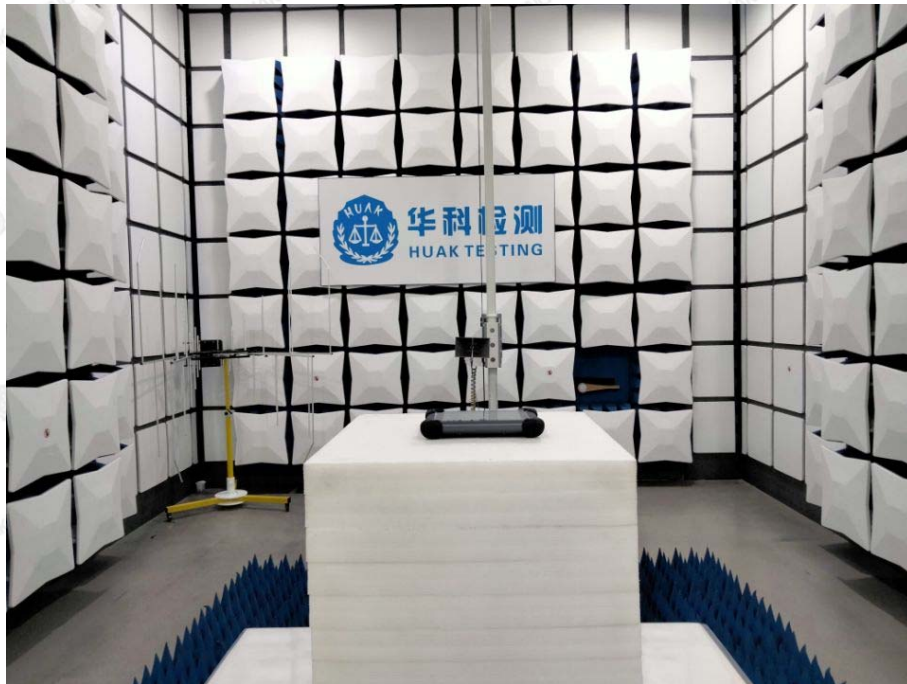
WIFI ANTENNA





5. PHOTOGRAPHS OF TEST SETUP

Radiated Emission



The results shown in this test report refer only to the sample(s) tested unless otherwise stated and the sample(s) are retained for 30 days only. The document is issued by HUAKE, this document cannot be reproduced except in full with our prior written permission. The more details and the authenticity of the report will be confirmed at <http://www.cer-mark.com>.

TEL : +86-755 2302 9901 FAX : +86-755 2302 9901 E-mail : service@cer-mark.com

Addr: 1-2F., Building B2, Junfeng Zhongcheng Zhizao Innovation Park, Heping Community, Fuhai Street, Bao'an District, Shenzhen, Guangdong, China



Conducted Emission



The results shown in this test report refer only to the sample(s) tested unless otherwise stated and the sample(s) are retained for 30 days only. The document is issued by HUAK, this document cannot be reproduced except in full with our prior written permission. The more details and the authenticity of the report will be confirmed at <http://www.cer-mark.com>.

TEL : +86-755 2302 9901 FAX : +86-755 2302 9901 E-mail : service@cer-mark.com

Addr: 1-2F., Building B2, Junfeng Zhongcheng Zhizao Innovation Park, Heping Community, Fuhai Street, Bao'an District, Shenzhen, Guangdong, China



6. PHOTOS OF THE EUT

Reference to the report: ANNEX A of external photos and ANNEX B of internal photos.

-----**End of report**-----