

Thank you for purchasing Autel tool. This tool is manufactured to a high standard and will provide years of trouble-free performance when used in accordance to these instructions and properly maintained.

Getting Started



IMPORTANT: Before operating or maintaining this unit, please read these instructions carefully. Failure to use this unit correctly may cause damage and/or personal injury and will void the product warranty.

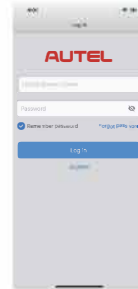
1



Search for **Autel Link** in the Google Play store or App Store to download and install the app to your device, or scan the above QR code to download the Autel Link app.

In Android system, you will be directed to Google Play, while iOS users will be directed to the App Store.

2



Open the Autel Link app and tap **Register** in the middle of the screen. Follow the on-screen instructions to complete the registration. Log in with your registered email address/phone number and password.

3



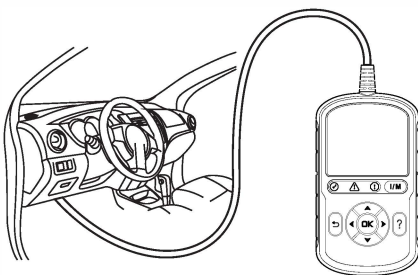
On your device, tap **Me > Device Manager > Binding Equipment**, the device will automatically jump to the next screen. Tap to scan the QR code imprinted on the AL2500 tool.

4



After the scanning is complete and the serial number is automatically retrieved, tap the **Bind Equipment** button at the bottom of the screen to proceed. Tap the tool name — AL2500 to enter the next screen.

5



Connect the OBDII cable's 16-pin male adapter to the vehicle's Data Link Connector (DLC), which is generally located under the vehicle dashboard. The tool will be automatically powered on.

Your AL2500 is now ready to use.

6



Tap the **Connect Device** button at the bottom of the screen to connect the device. Once connected successfully, tap the **Firmware Upgrade** button to update the firmware.

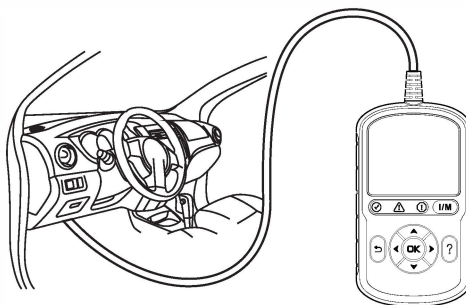
Connect to the Vehicle

1



- Scan QR Code to visit our website at www.autel.com.
- To update the firmware, please create an Autel ID and register the product with device's serial number and password, which can be found by tapping the **Setup > About** buttons on the tool screen.

2

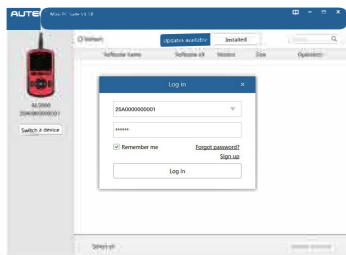


- Connect the OBDII cable's 16-pin male adapter to the vehicle's Data Link Connector (DLC), which is generally located under the vehicle dashboard.
- The tool will be automatically powered on.
- Your AL2500 is now ready to use.

Firmware Update Through the Maxi PC Suite

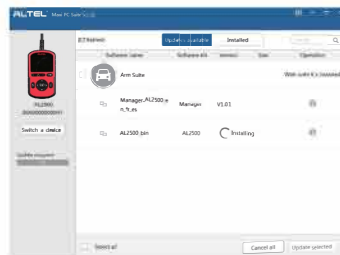
Please download the Maxi PC Suite from www.autel.com > *Support > Downloads > Autel Update Tools*, and install to your Windows-based computer.

1



- Connect the device with the computer using the USB cable.
- Run the Maxi PC Suite. Select **Update Mode** in the tool. Wait for the **Log In** window to display.
- Enter your Autel ID and password, tap **Log In** and wait for the **Update** window to display. If you forgot your password, click the **Forgot Password?** link to our website and retrieve your password. Or click **Sign Up** to create an Autel ID to continue.

2



- In the Update window, if update(s) is available, tap **Update** on the right side of the screen to update the firmware.
- Tap the **Installed** tag and the list of installed programs will display.

NOTE: The interfaces in this quick guide are for reference only.

For service and support, please contact us.

<http://pro.autel.com> / www.autel.com / support@autel.com

0086-755-2267-2493 (China HQ) / 1-855-AUTEL-US (288-3587) (North America)

0049 (0) 6103-2000520 (Europe) / +045 5948465 (APAC) / +971 585 002709 (IMEA)

© Autel Intelligent Technology Corp., Ltd. All Rights Reserved.

FCC STATEMENT :

This device complies with Part 15 of the FCC Rules. Operation is subject to the following two conditions:

- (1) This device may not cause harmful interference, and
- (2) This device must accept any interference received, including interference that may cause undesired operation.

Warning: Changes or modifications not expressly approved by the party responsible for compliance could void the user's authority to operate the equipment.

NOTE: This equipment has been tested and found to comply with the limits for a Class B digital device, pursuant to Part 15 of the FCC Rules. These limits are designed to provide reasonable protection against harmful interference in a residential installation. This equipment generates uses and can radiate radio frequency energy and, if not installed and used in accordance with the instructions, may cause harmful interference to radio communications. However, there is no guarantee that interference will not occur in a particular installation. If this equipment does cause harmful interference to radio or television reception, which can be determined by turning the equipment off and on, the user is encouraged to try to correct the interference by one or more of the following measures:

- Reorient or relocate the receiving antenna.

- Increase the separation between the equipment and receiver.

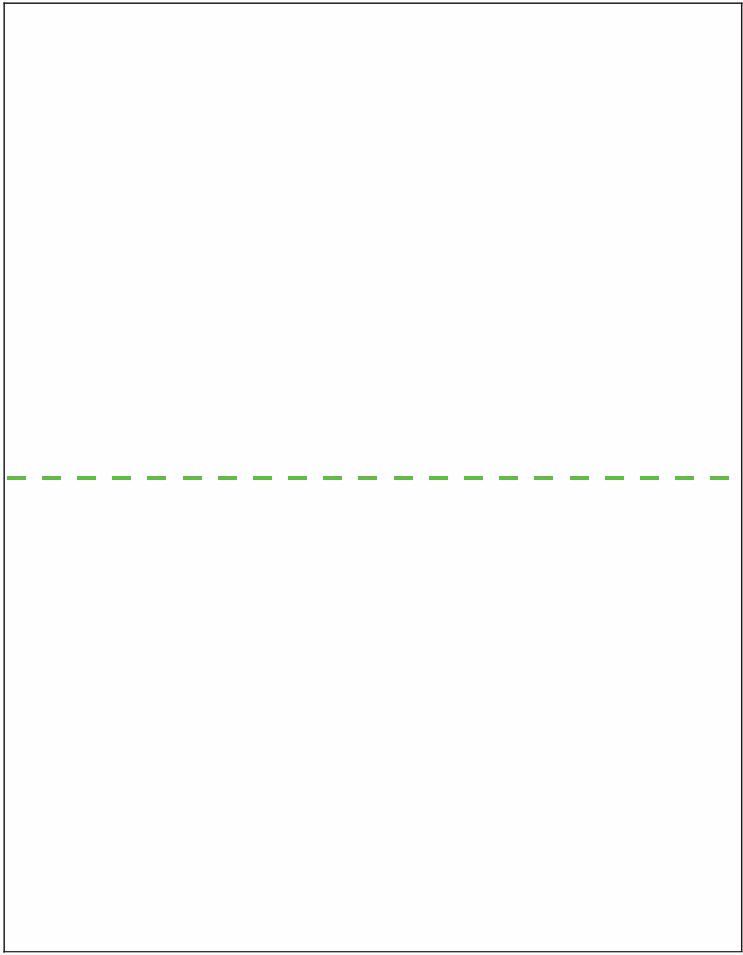
- Connect the equipment into an outlet on a circuit different from that to which the receiver is connected.

- Consult the dealer or an experienced radio/TV technician for help.

FCC Radiation Exposure Statement:

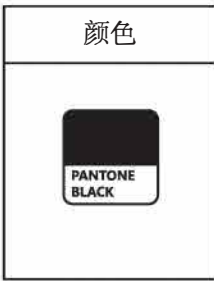
This equipment complies with FCC radiation exposure limits set forth for an uncontrolled environment. This equipment should be installed and operated with minimum distance 20cm between the radiator & your body.

| REV | POSITION | DATE | DESCRIPTION |
|-----|----------|------|-------------|
| | | | |
| | | | |



对折

RELEASE LEVEL: &PROJ_RELEASE
FILE NAME: MO_EL_NAME



注：AUTEL设计部不指定供应商。效果做到参考样品一致即可。

| DIM | Sheetmetal | Machining |
|----------|------------|-----------|
| 0~6 | 0.10 | 0.05 |
| 6~30 | 0.15 | 0.10 |
| 30~120 | 0.25 | 0.15 |
| 120~300 | 0.35 | 0.20 |
| 300~600 | 0.50 | 0.25 |
| 600~1200 | 0.60 | 0.30 |
| >1200 | 0.80 | 0.50 |
| ANG. | 1~ | 30° |

AUTEL 道通科技股份有限公司
Autel Intelligent Technolog Corp.Ltd.

These Drawings And Specification
Are The Property Of AUTEL. And Shall
NOT Be Reproduced Copied Or Used
In Any Manner Without The Prior
Written Consent Of AUTEL

PROJ

| TITLE: 快速指引 | |
|---------------|-------------------|
| DRAW: 汤清洪 | UNIT'S: 190x264mm |
| CHKD: 兰金香 | FINISH: |
| STAD: | MASS(Kg): |
| APPD: 廖岳龙 | SCALE: |
| SHEET: 1 OF 1 | PRODUCT: AL2500 |

DWG NO.: AUT62060563
PART NO.: 500005444
Material: 120g书写纸