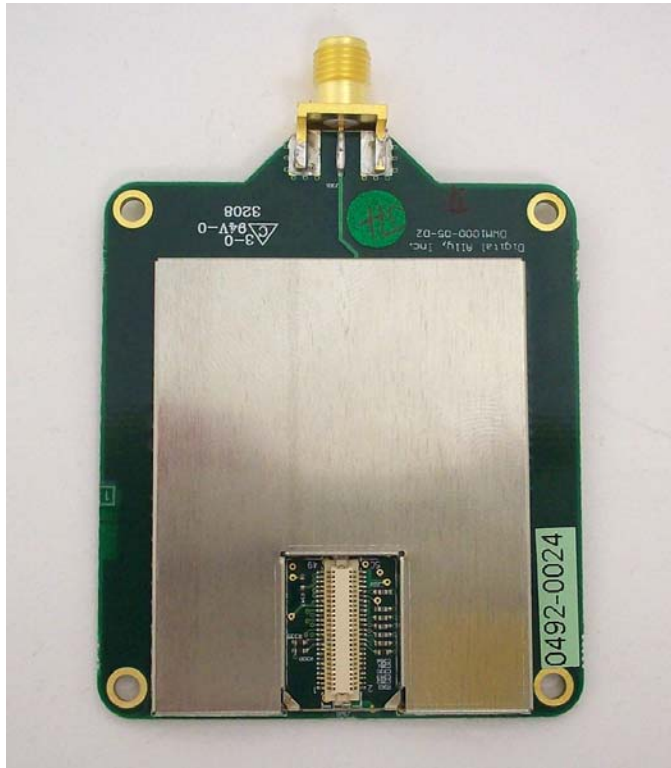
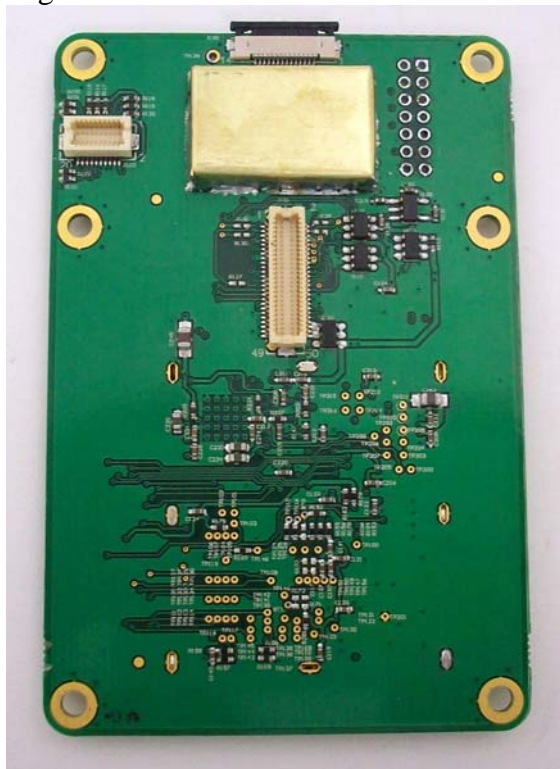


Transmitter circuit board with shield



Digital interface board with shield

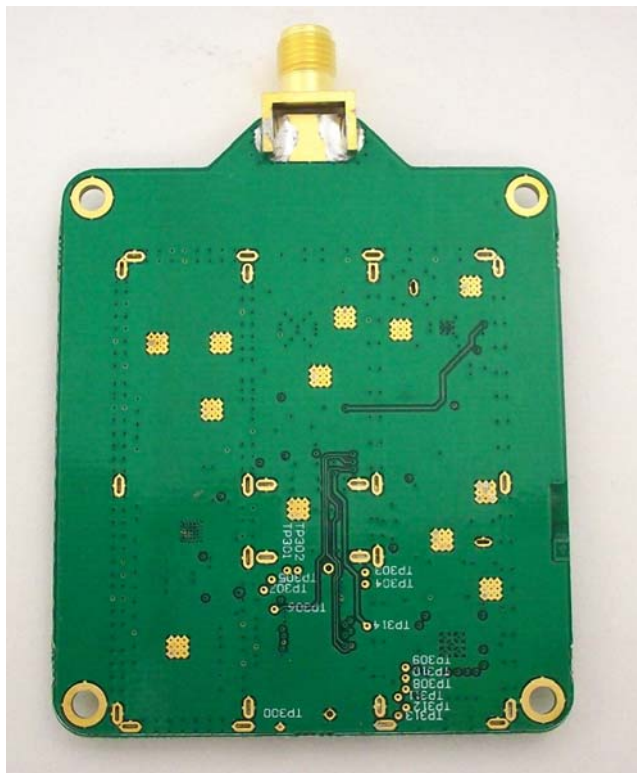
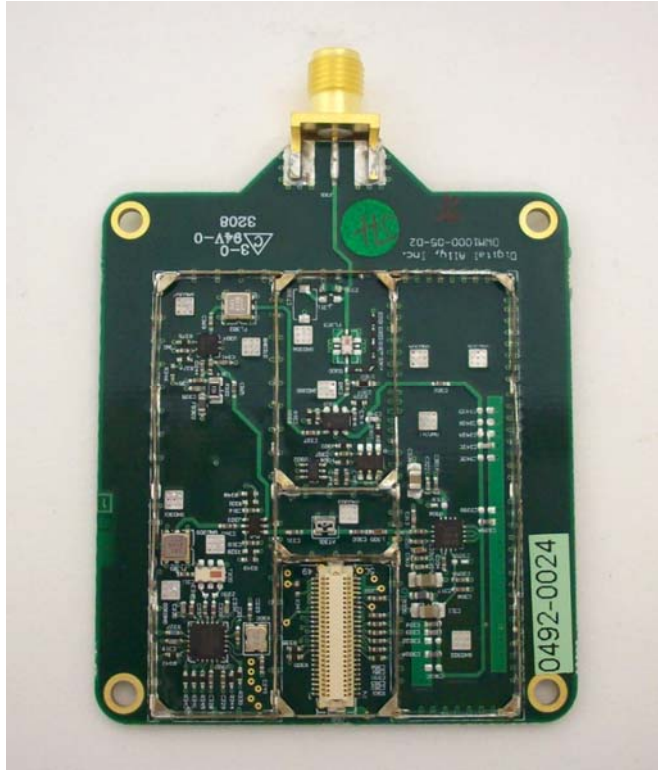


Rogers Labs, Inc.  
4405 West 259<sup>th</sup> Terrace  
Louisburg, KS 66053  
Phone/Fax: (913) 837-3214  
Revision 1

Digital Ally, Inc.  
Model: DWM1000 ICT (DWMICT1)  
Test #:080930ICT SN: 0492-0000  
Test to: FCC Parts 2 and 15.247, RSS-210  
File: IntPho DWMICT1

FCC ID#: WPZ-DWMICT1  
IC: 7945A-DWMICT1  
Page 1 of 3  
Date: October 10, 2008

# Transmitter board without shield

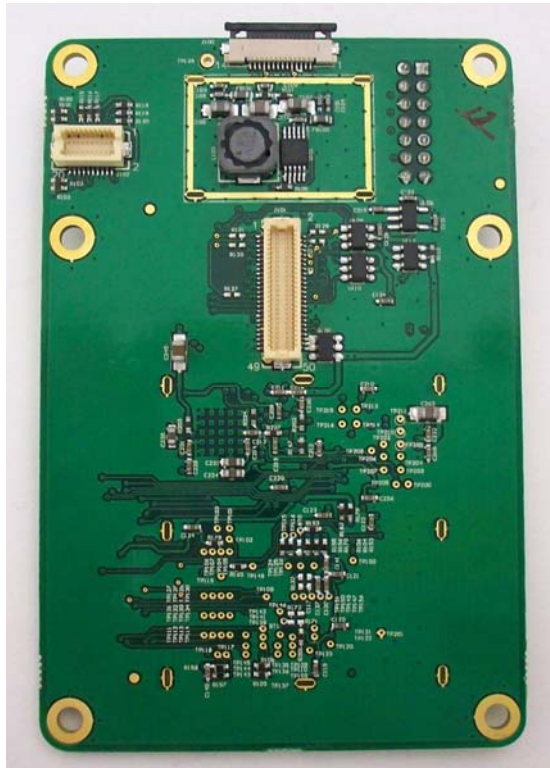


Rogers Labs, Inc.  
4405 West 259<sup>th</sup> Terrace  
Louisburg, KS 66053  
Phone/Fax: (913) 837-3214  
Revision 1

Digital Ally, Inc.  
Model: DWM1000 ICT (DWMICT1)  
Test #:080930ICT SN: 0492-0000  
Test to: FCC Parts 2 and 15.247, RSS-210  
File: IntPho DWMICT1

FCC ID#: WPZ-DWMICT1  
IC: 7945A-DWMICT1  
Page 2 of 3  
Date: October 10, 2008

Interface board without shield



Rogers Labs, Inc.  
4405 West 259<sup>th</sup> Terrace  
Louisburg, KS 66053  
Phone/Fax: (913) 837-3214  
Revision 1

Digital Ally, Inc.  
Model: DWM1000 ICT (DWMICT1)  
Test #: 080930ICT SN: 0492-0000  
Test to: FCC Parts 2 and 15.247, RSS-210  
File: IntPho DWMICT1

FCC ID#: WPZ-DWMICT1  
IC: 7945A-DWMICT1  
Page 3 of 3  
Date: October 10, 2008