

US Tech
Test Report:
Date:
Model(s):
FCC ID:
IC:
Customer:

FCC Part 15.247/ RSS 210
14-0123
September 8, 2014
PSASII-01
WPEPSASII-01
8031A-PSASII01
Paksense

INTERNAL PHOTOGRAPHS



Photo 1 – Top of EUT with External B Plates removed

US Tech
Test Report:
Date:
Model(s):
FCC ID:
IC:
Customer:

FCC Part 15.247/ RSS 210
14-0123
September 8, 2014
PSASII-01
WPEPSASII-01
8031A-PSASII01
Paksense



Photo 2 – Bottom of EUT with External Plates Removed

US Tech
Test Report:
Date:
Model(s):
FCC ID:
IC:
Customer:

FCC Part 15.247/ RSS 210
14-0123
September 8, 2014
PSASII-01
WPEPSASII-01
8031A-PSASII01
Paksense



Photo 3 – Inside of External Case

US Tech
Test Report:
Date:
Model(s):
FCC ID:
IC:
Customer:

FCC Part 15.247/ RSS 210
14-0123
September 8, 2014
PSASII-01
WPEPSASII-01
8031A-PSASII01
Paksense



Photo 4 – Top of Circuit Board # 1 with Circuit Board #2 Attached

US Tech
Test Report:
Date:
Model(s):
FCC ID:
IC:
Customer:

FCC Part 15.247/ RSS 210
14-0123
September 8, 2014
PSASII-01
WPEPSASII-01
8031A-PSASII01
Paksense

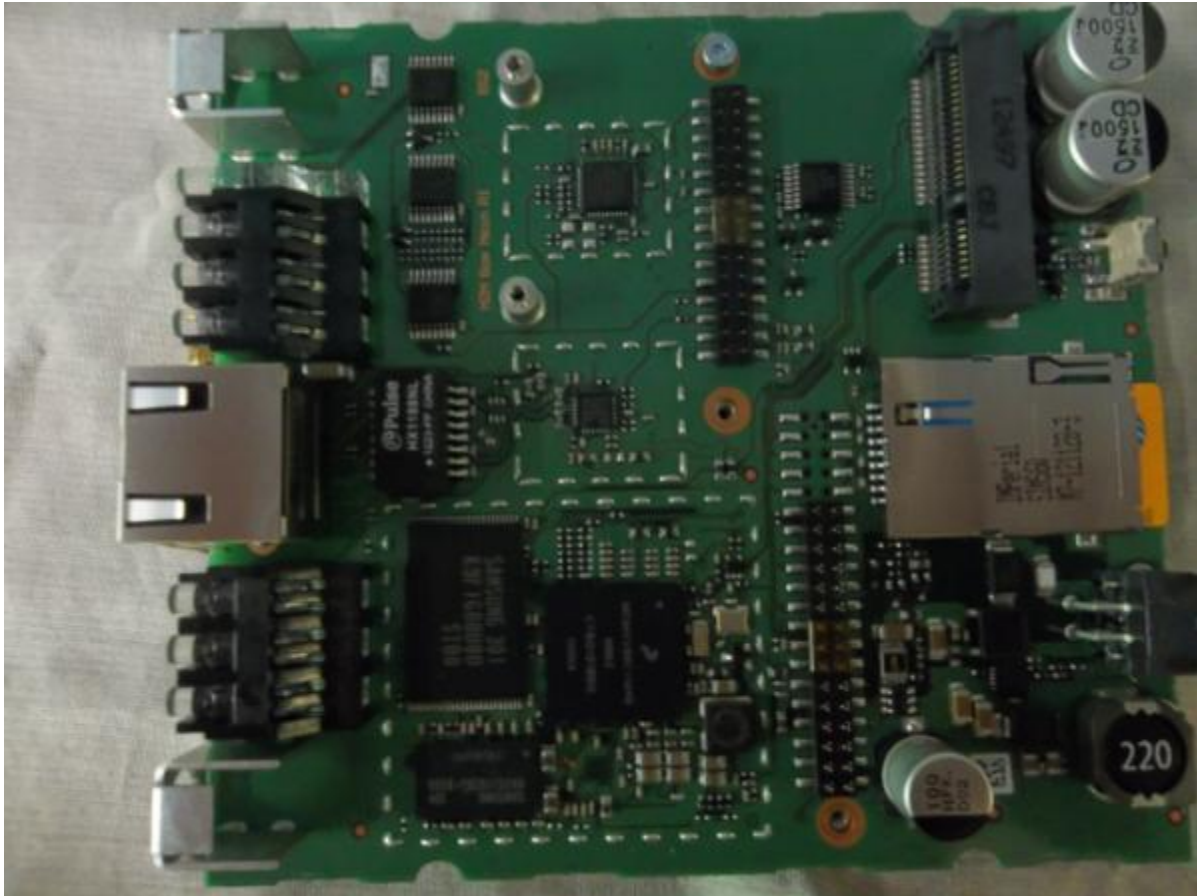


Photo 5 – Top of Circuit Board #1 with Circuit Board #2 Removed

US Tech
Test Report:
Date:
Model(s):
FCC ID:
IC:
Customer:

FCC Part 15.247/ RSS 210
14-0123
September 8, 2014
PSASII-01
WPEPSASII-01
8031A-PSASII01
Paksense

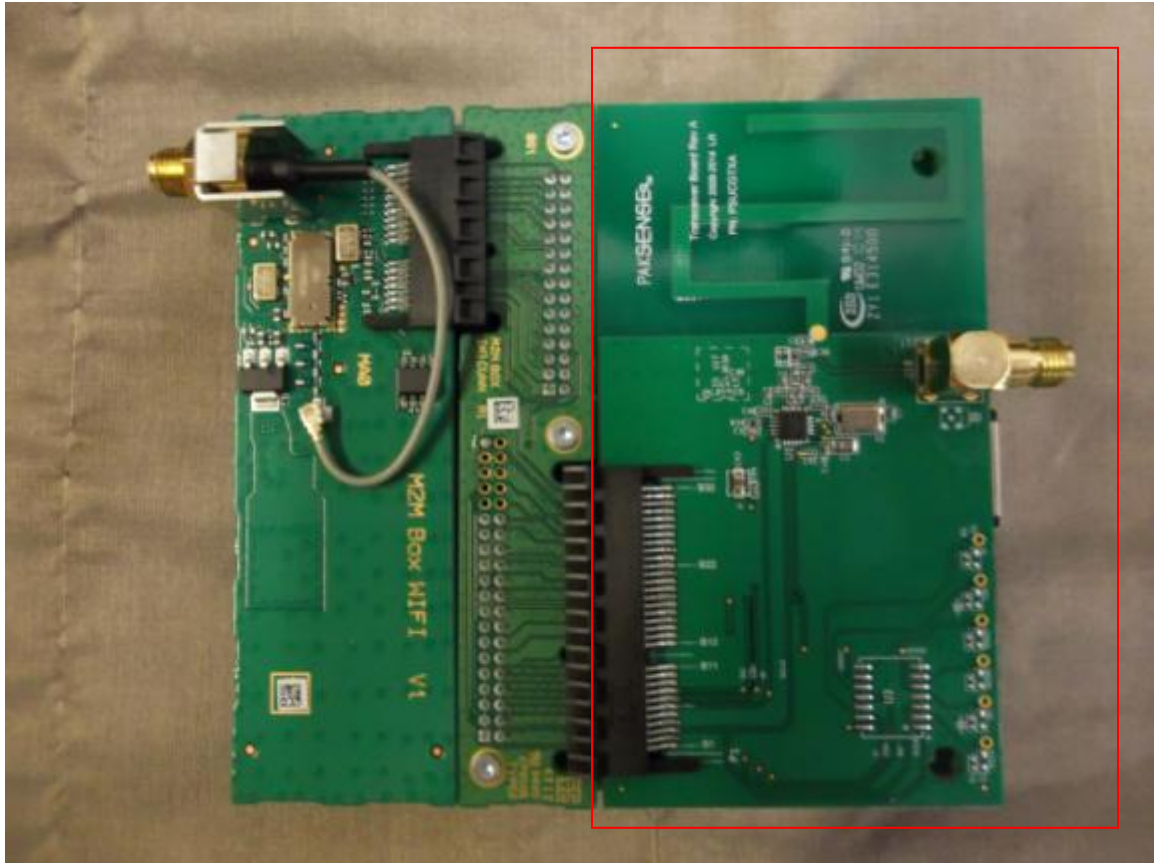


Photo 6 – Bottom of Circuit Board #1 with Circuit Board #3 and #4 Attached

Note: Paksense radio circled above

US Tech
Test Report:
Date:
Model(s):
FCC ID:
IC:
Customer:

FCC Part 15.247/ RSS 210
14-0123
September 8, 2014
PSASII-01
WPEPSASII-01
8031A-PSASII01
Paksense



Photo 7 – Bottom of Circuit Board #1, no other Circuit Boards Attached

US Tech
Test Report:
Date:
Model(s):
FCC ID:
IC:
Customer:

FCC Part 15.247/ RSS 210
14-0123
September 8, 2014
PSASII-01
WPEPSASII-01
8031A-PSASII01
Paksense



Photo 8 – Bottom of Circuit Board #2 (cellular module)

US Tech
Test Report:
Date:
Model(s):
FCC ID:
IC:
Customer:

FCC Part 15.247/ RSS 210
14-0123
September 8, 2014
PSASII-01
WPEPSASII-01
8031A-PSASII01
Paksense



Photo 9 – Top of Circuit Board # 2

US Tech
Test Report:
Date:
Model(s):
FCC ID:
IC:
Customer:

FCC Part 15.247/ RSS 210
14-0123
September 8, 2014
PSASII-01
WPEPSASII-01
8031A-PSASII01
Paksense



Photo 10 – Top of Circuit Board #3 (WiFi module)

US Tech
Test Report:
Date:
Model(s):
FCC ID:
IC:
Customer:

FCC Part 15.247/ RSS 210
14-0123
September 8, 2014
PSASII-01
WPEPSASII-01
8031A-PSASII01
Paksense

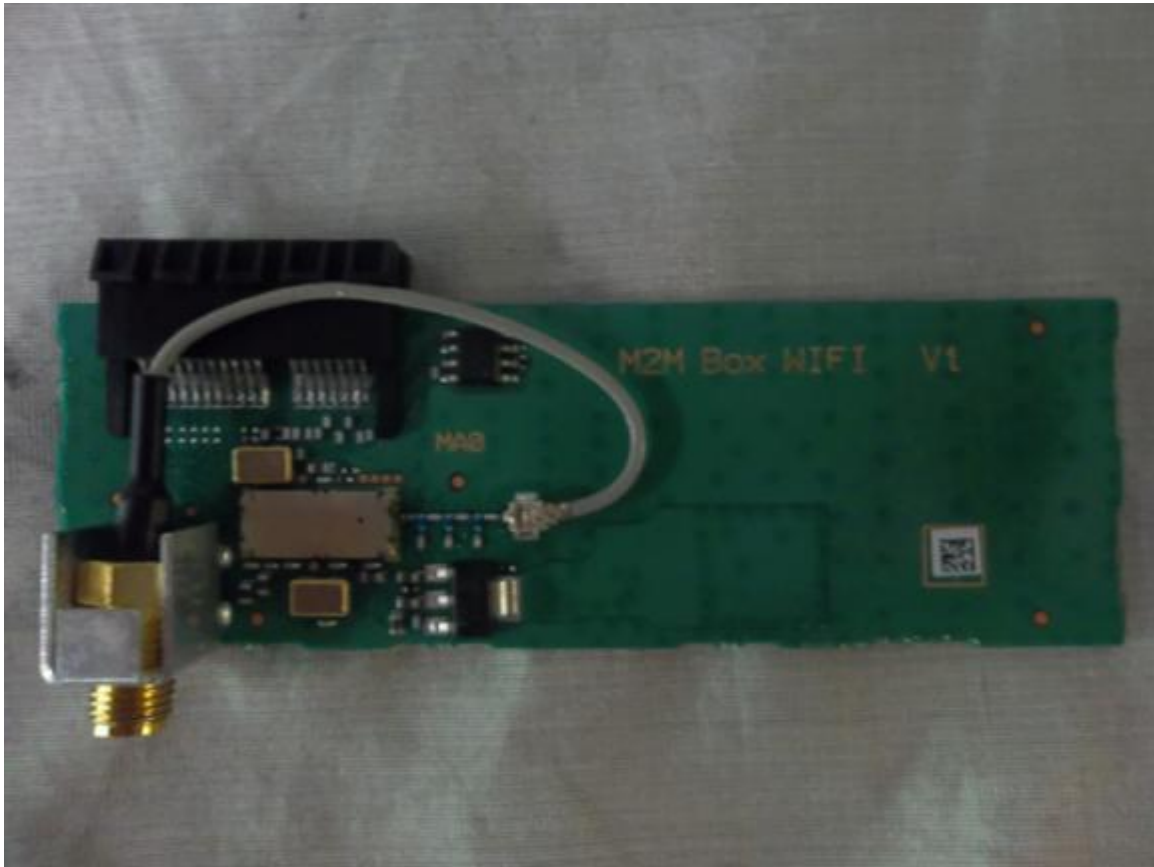


Photo 11 – Bottom of Circuit Board #3

US Tech
Test Report:
Date:
Model(s):
FCC ID:
IC:
Customer:

FCC Part 15.247/ RSS 210
14-0123
September 8, 2014
PSASII-01
WPEPSASII-01
8031A-PSASII01
Paksense



Photo 12 – Top of Circuit Board #4, (Paksense Radio)

US Tech
Test Report:
Date:
Model(s):
FCC ID:
IC:
Customer:

FCC Part 15.247/ RSS 210
14-0123
September 8, 2014
PSASII-01
WPEPSASII-01
8031A-PSASII01
Paksense

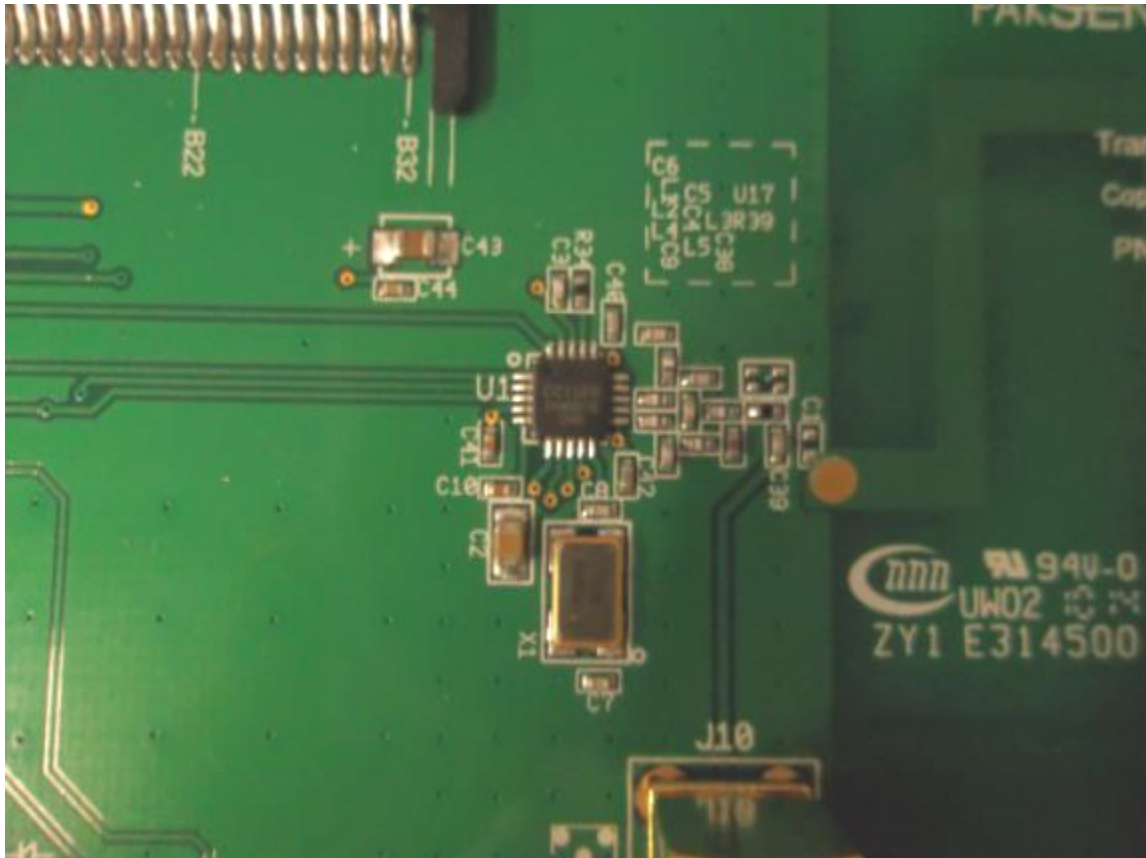


Photo 13 –Top of Circuit Board #4, Close up of Radio

US Tech
Test Report:
Date:
Model(s):
FCC ID:
IC:
Customer:

FCC Part 15.247/ RSS 210
14-0123
September 8, 2014
PSASII-01
WPEPSASII-01
8031A-PSASII01
Paksense

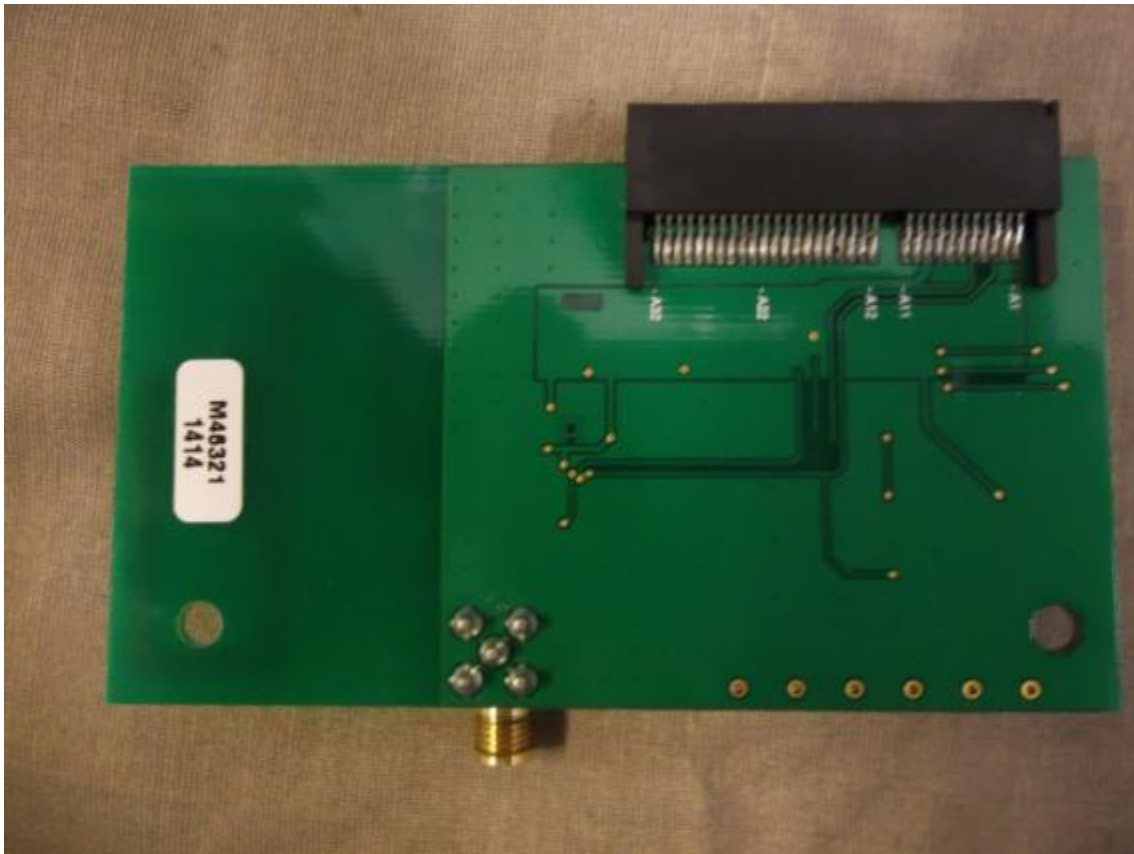


Photo 14 – Bottom of Circuit Board #4