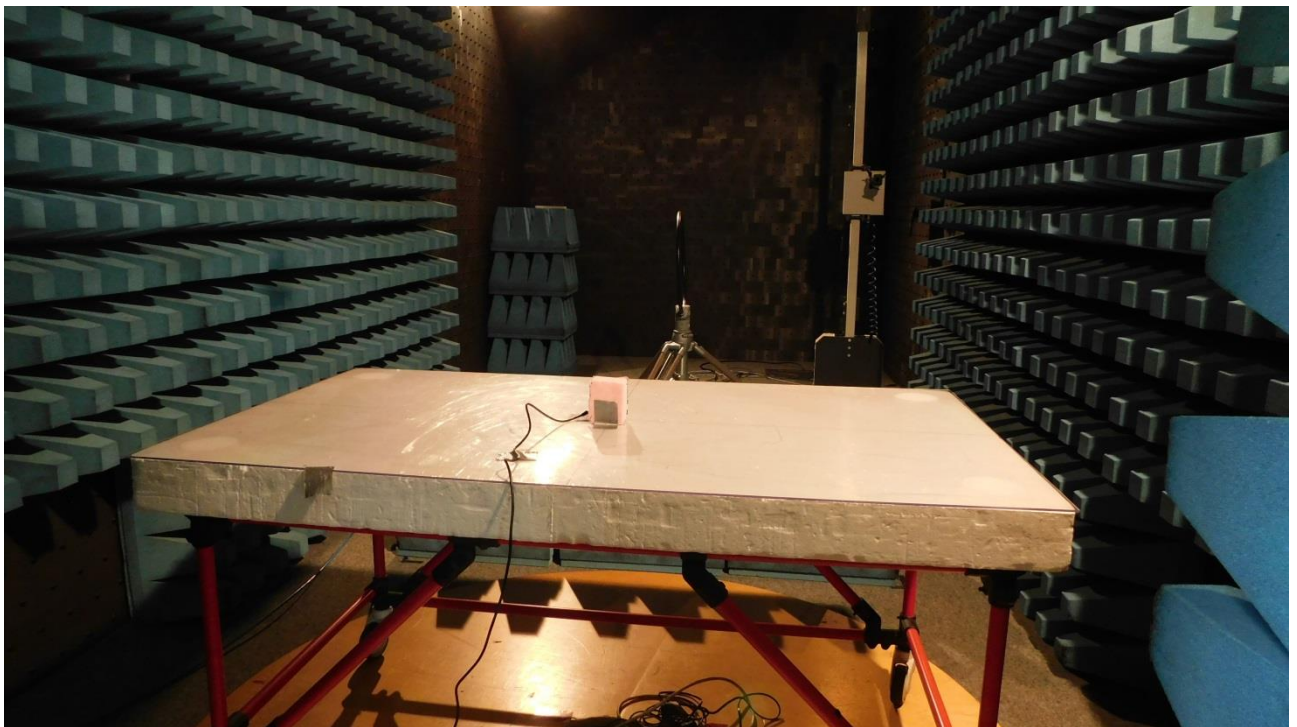


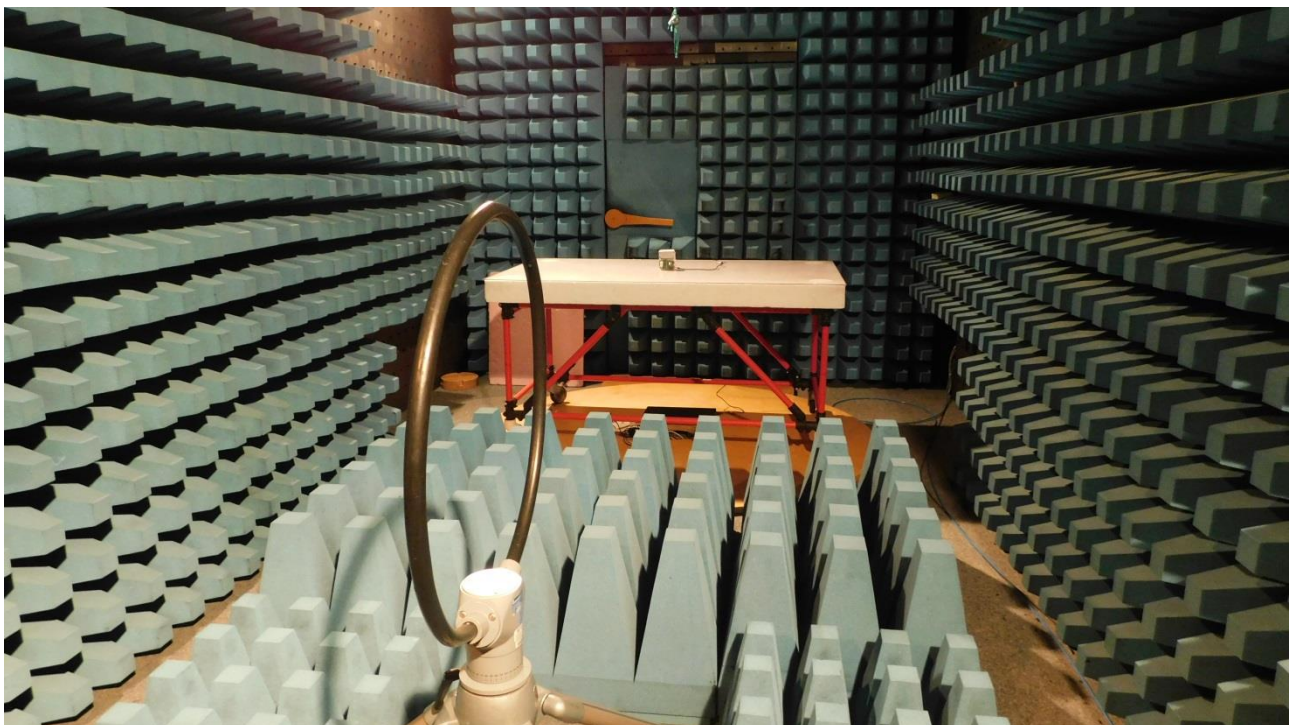
## 1 Annex A – Test setup

### 1.1 List of Pictures

Picture 1: CDC, test setup radiated emission test 9 kHz -30 MHz (front view) .....	2
Picture 2: CDC, test setup radiated emission test 9 kHz -30 MHz (rear view).....	2
Picture 3: SAC, radiated emission test 30 MHz -1 GHz (front view) .....	3
Picture 4: SAC, radiated emission test 30 MHz -1 GHz (rear view).....	3
Picture 5: AC, radiated emission test 1 GHz – 2 GHz (front view).....	4
Picture 6: AC, radiated emission test 1 GHz – 2 GHz (rear view).....	4
Picture 7: Test setup AC power line conducted emissions (front view) .....	5
Picture 8: Test setup AC power line conducted emissions (rear view) .....	5
Picture 9: Carrier frequency stability and bandwidth measurements.....	6
Picture 10: EUT-position X .....	6
Picture 11: EUT-position Y .....	7
Picture 12: EUT-position Z .....	7
Picture 13: RFID tag .....	8
Picture 14: USB cable .....	8
Picture 15: Sample with terminated antenna – top side.....	9
Picture 16: Sample with terminated antenna – back side .....	9



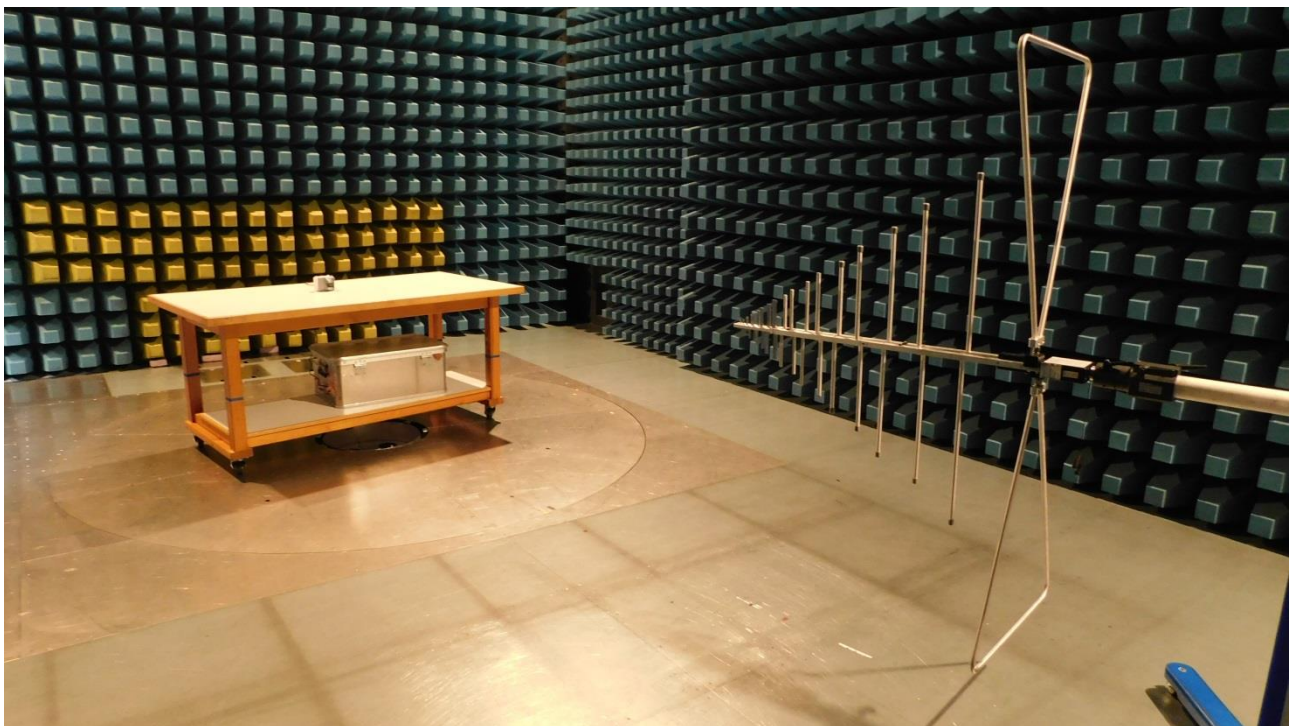
Picture 1: CDC, test setup radiated emission test 9 kHz -30 MHz (front view)



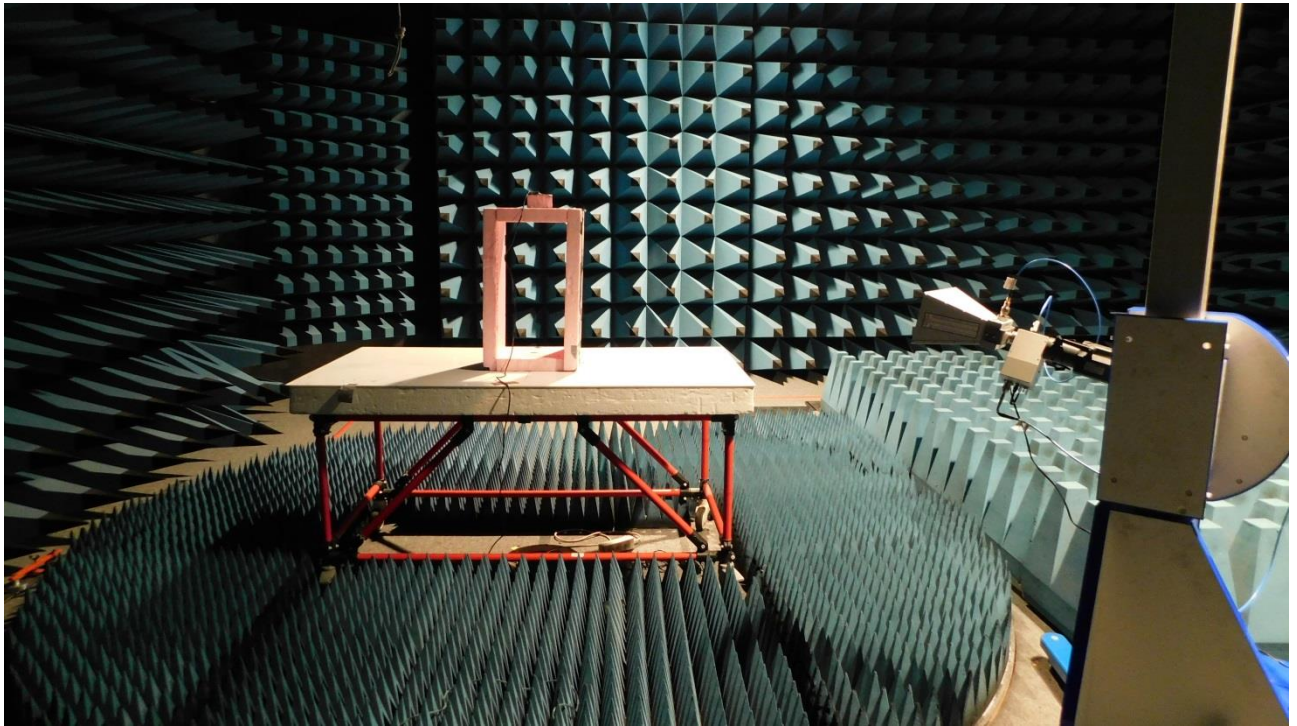
Picture 2: CDC, test setup radiated emission test 9 kHz -30 MHz (rear view)



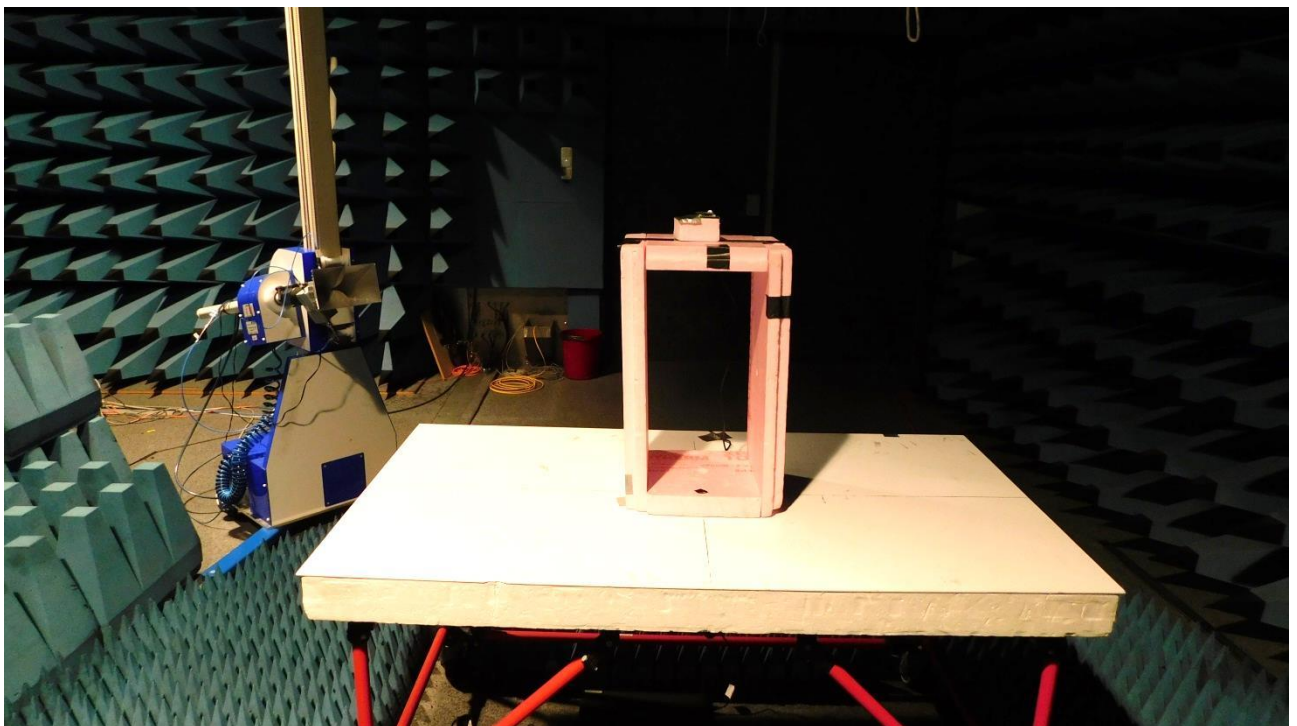
Picture 3: SAC, radiated emission test 30 MHz -1 GHz (front view)



Picture 4: SAC, radiated emission test 30 MHz -1 GHz (rear view)



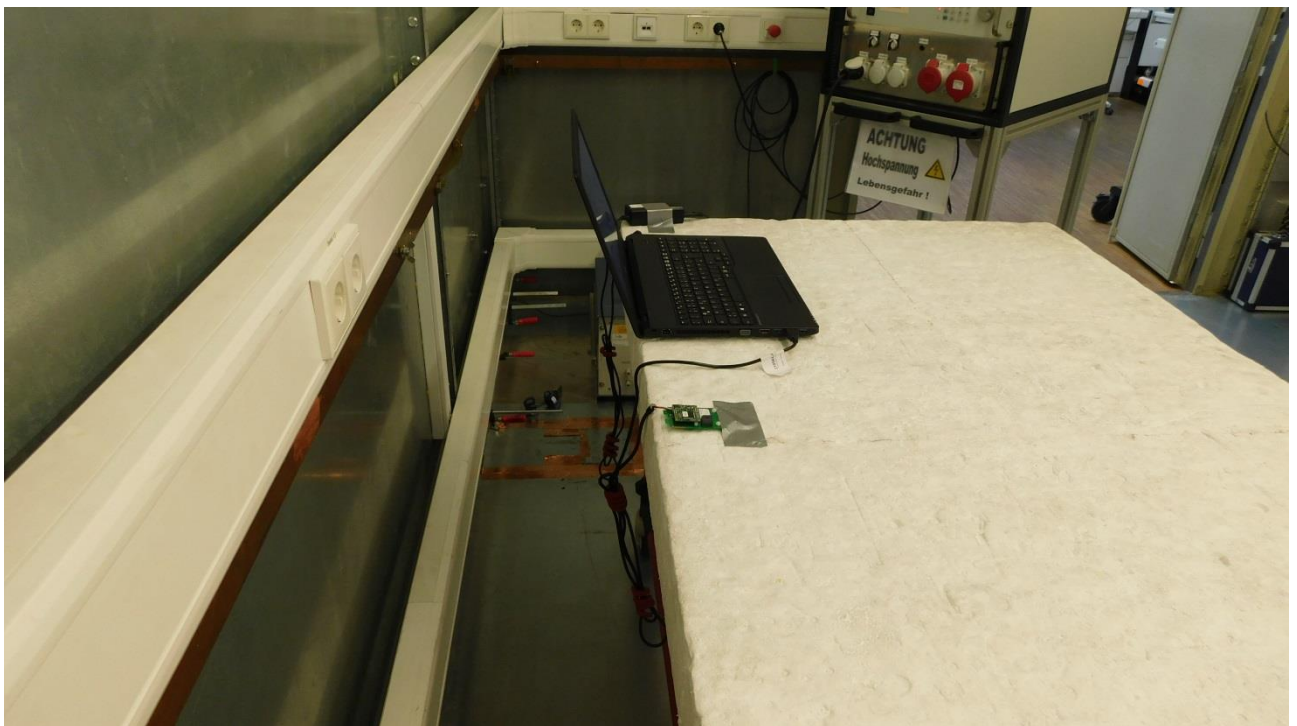
Picture 5: AC, radiated emission test 1 GHz – 2 GHz (front view)



Picture 6: AC, radiated emission test 1 GHz – 2 GHz (rear view)



Picture 7: Test setup AC power line conducted emissions (front view)



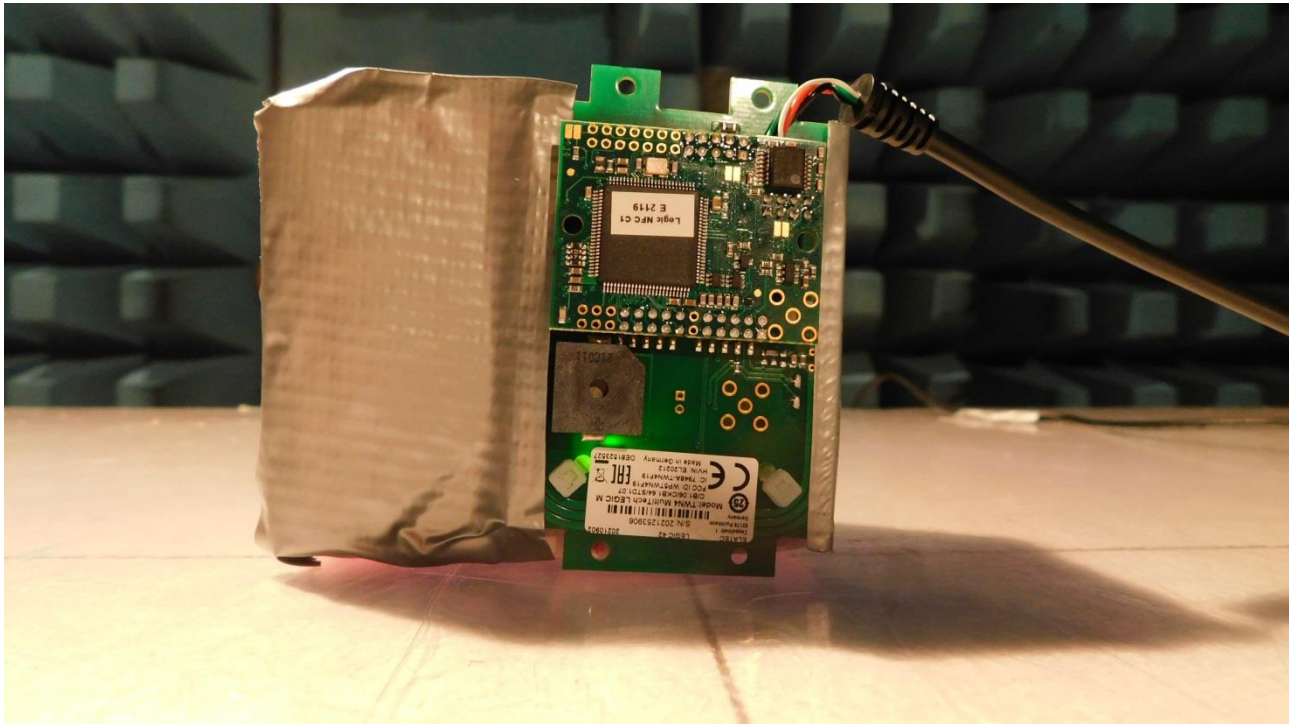
Picture 8: Test setup AC power line conducted emissions (rear view)



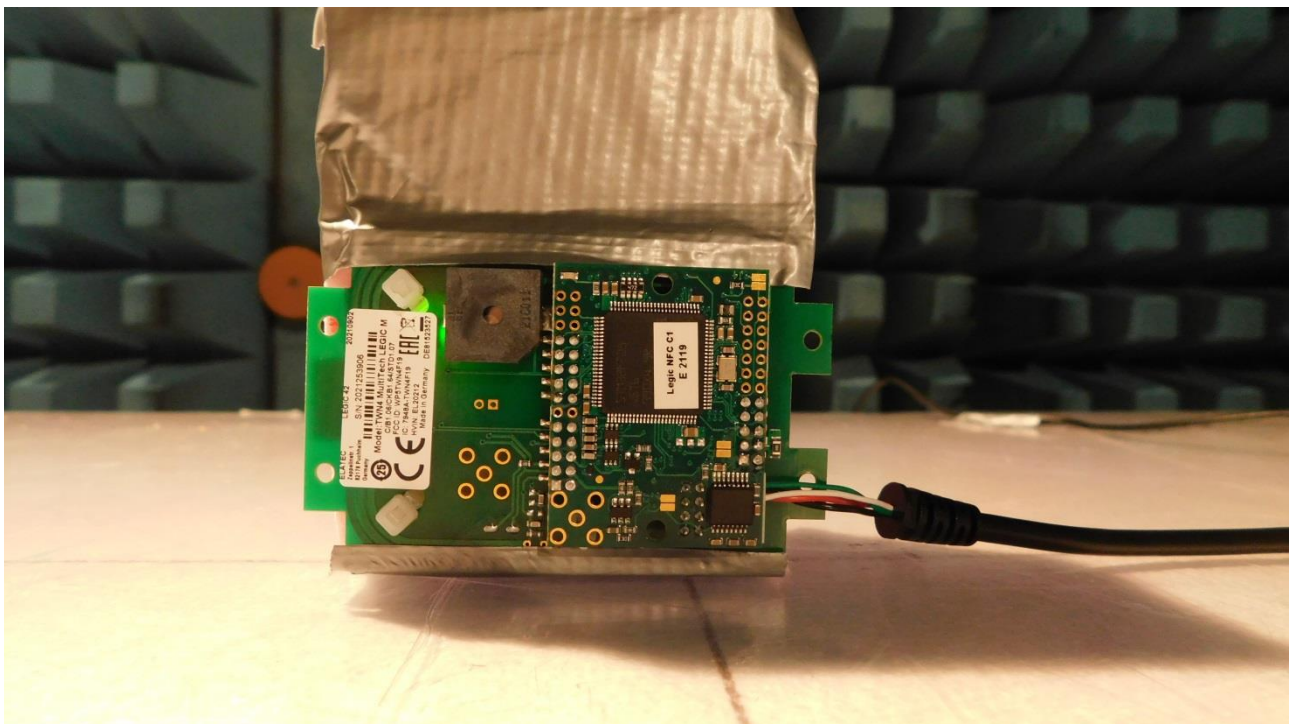
Picture 9: Carrier frequency stability and bandwidth measurements



Picture 10: EUT-position X



Picture 11: EUT-position Y



Picture 12: EUT-position Z

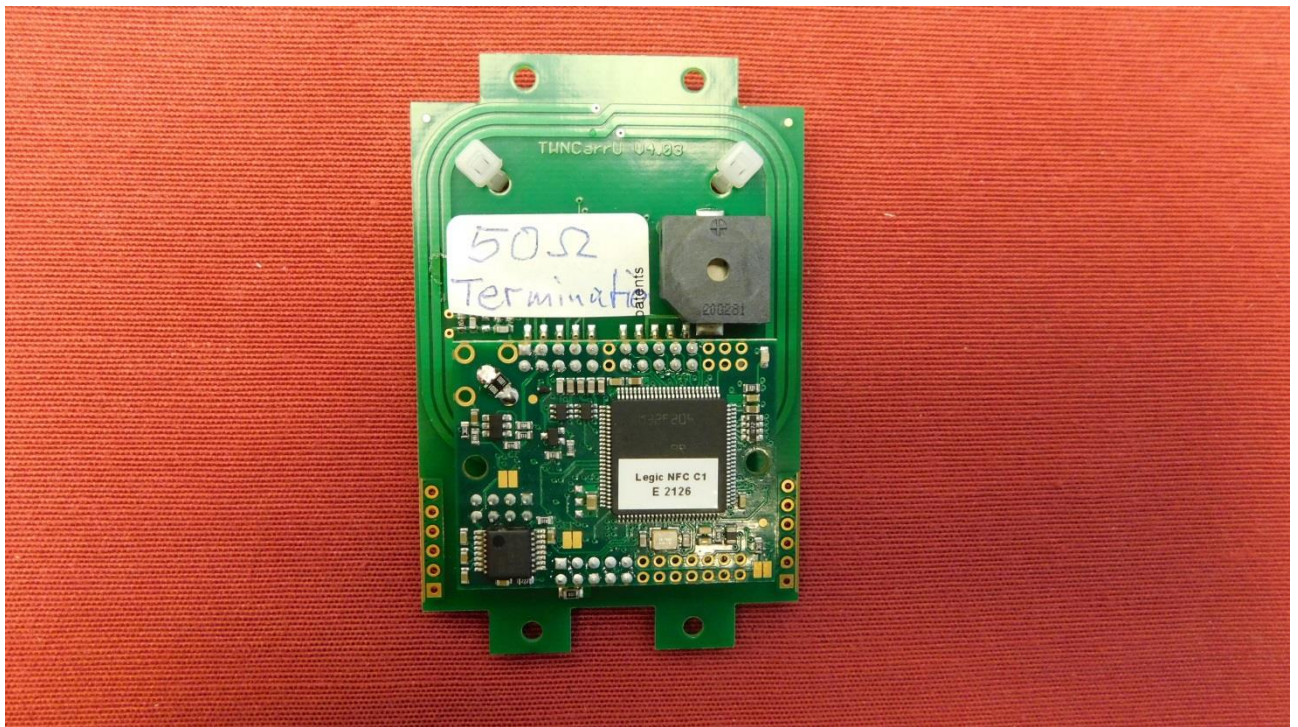


Picture 13: RFID tag

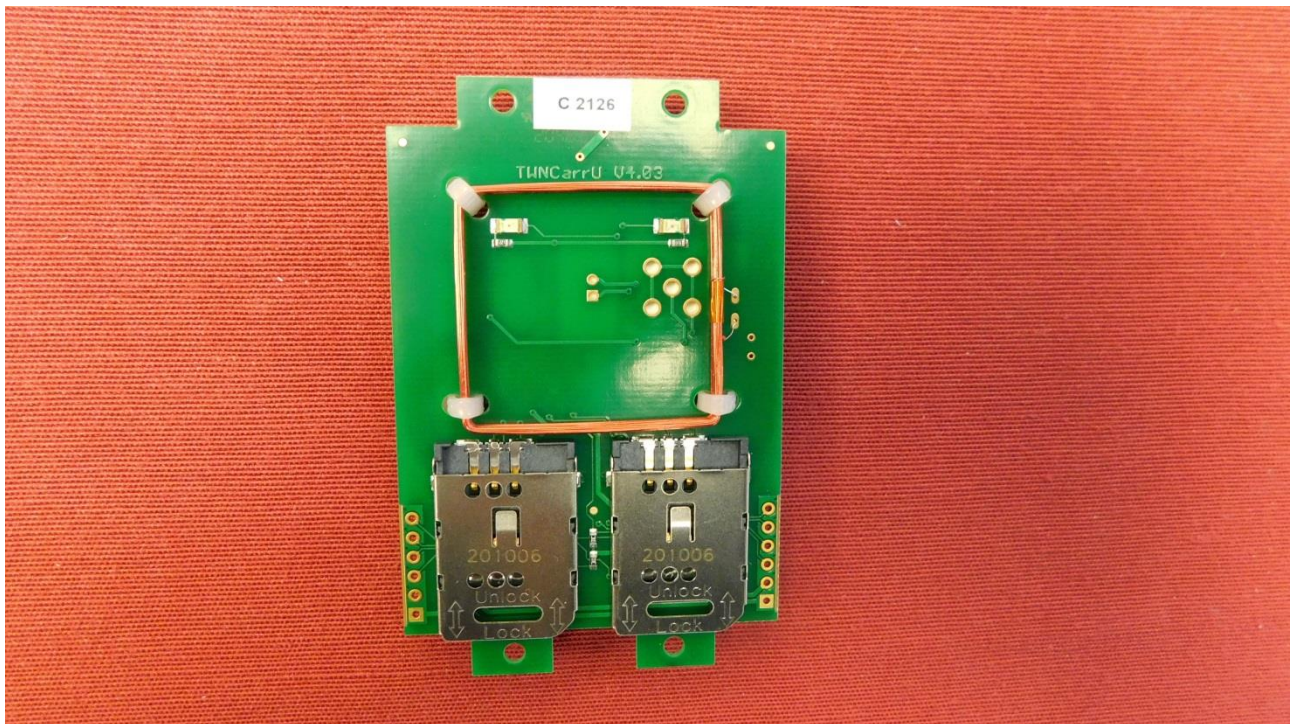


Picture 14: USB cable





Picture 15: Sample with terminated antenna – top side



Picture 16: Sample with terminated antenna – back side