

Figure 1: Inside of Unit

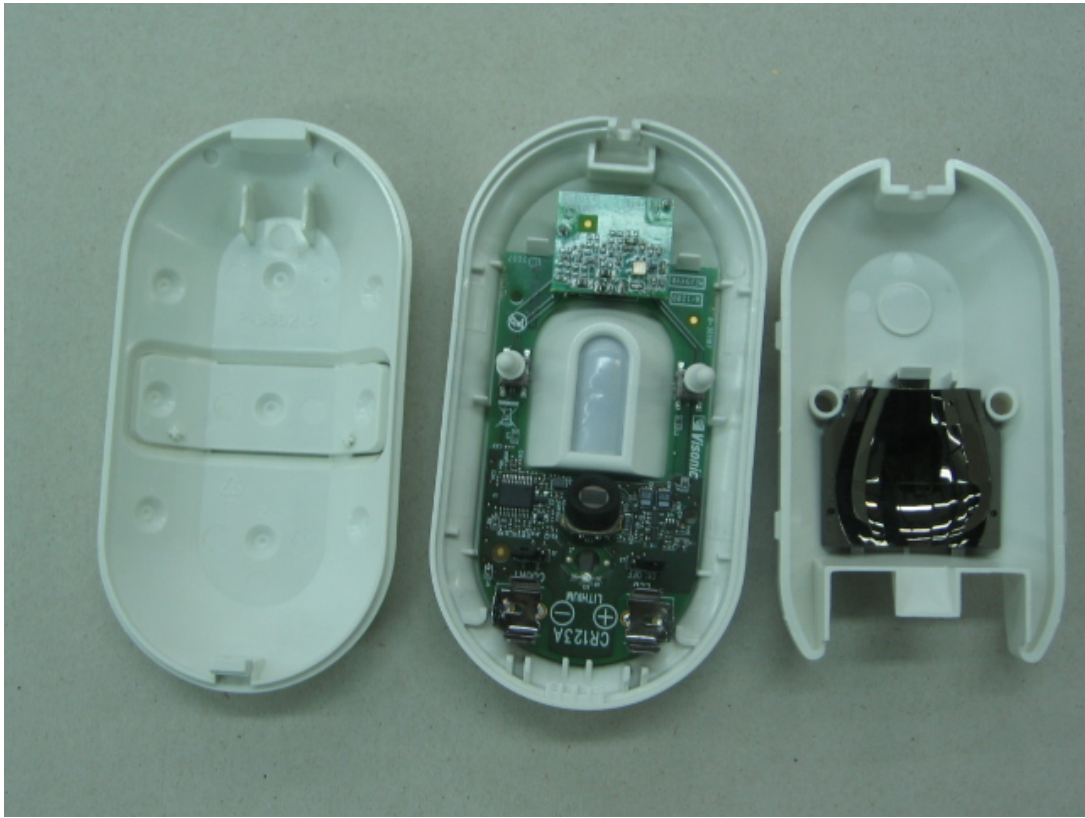


Figure 2: Inside of Unit



Figure 3: PCB inside case

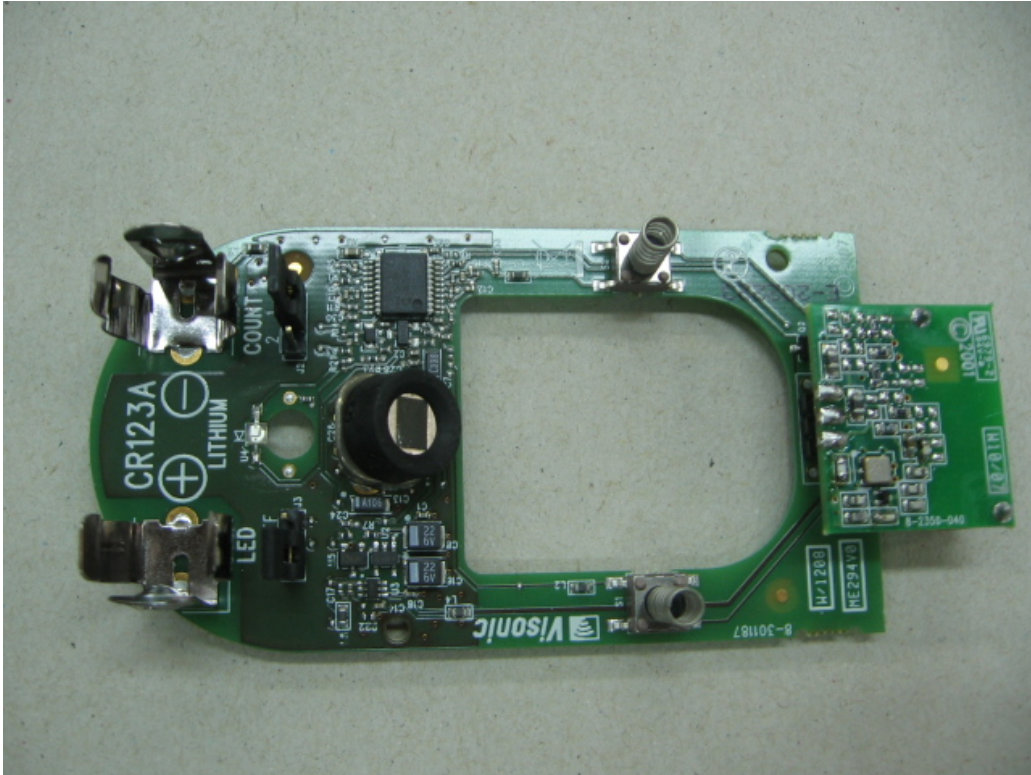


Figure 4: Top of PCB Boards

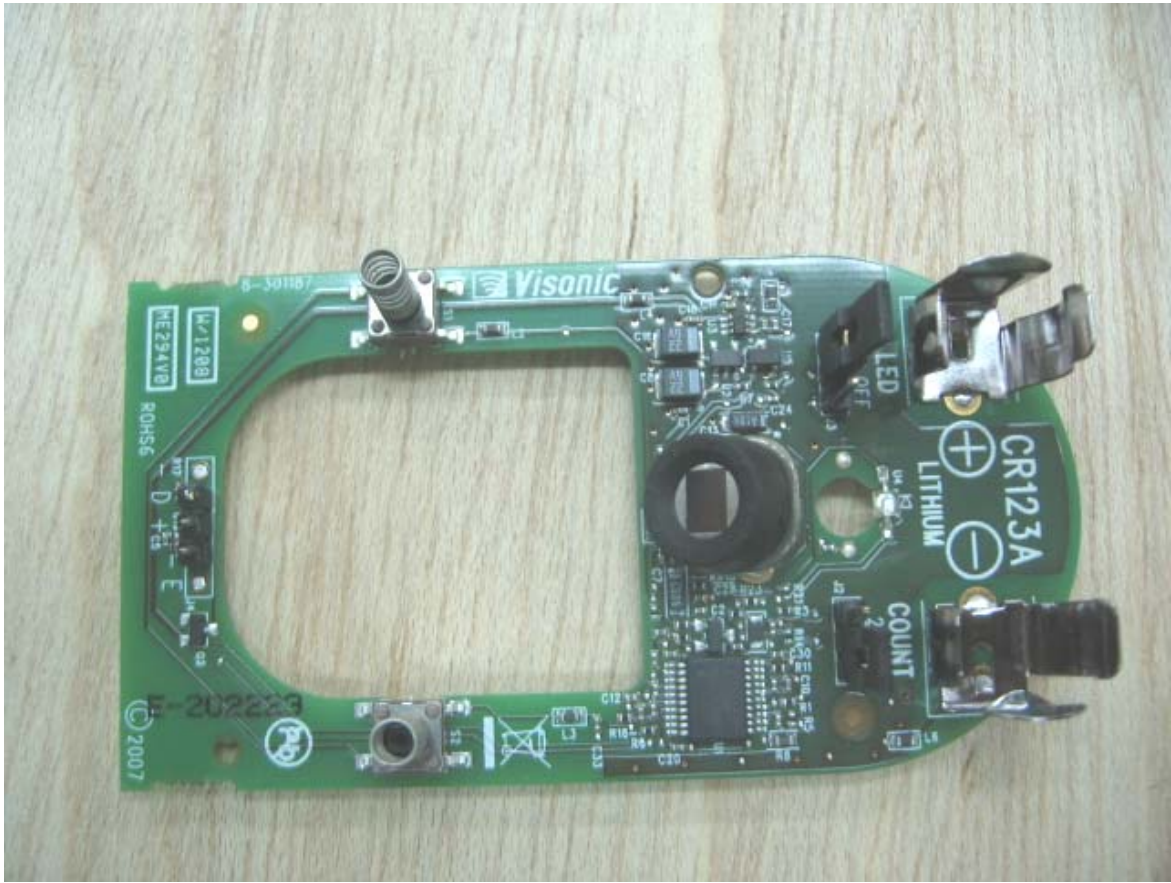


Figure 5: Top of CR123A

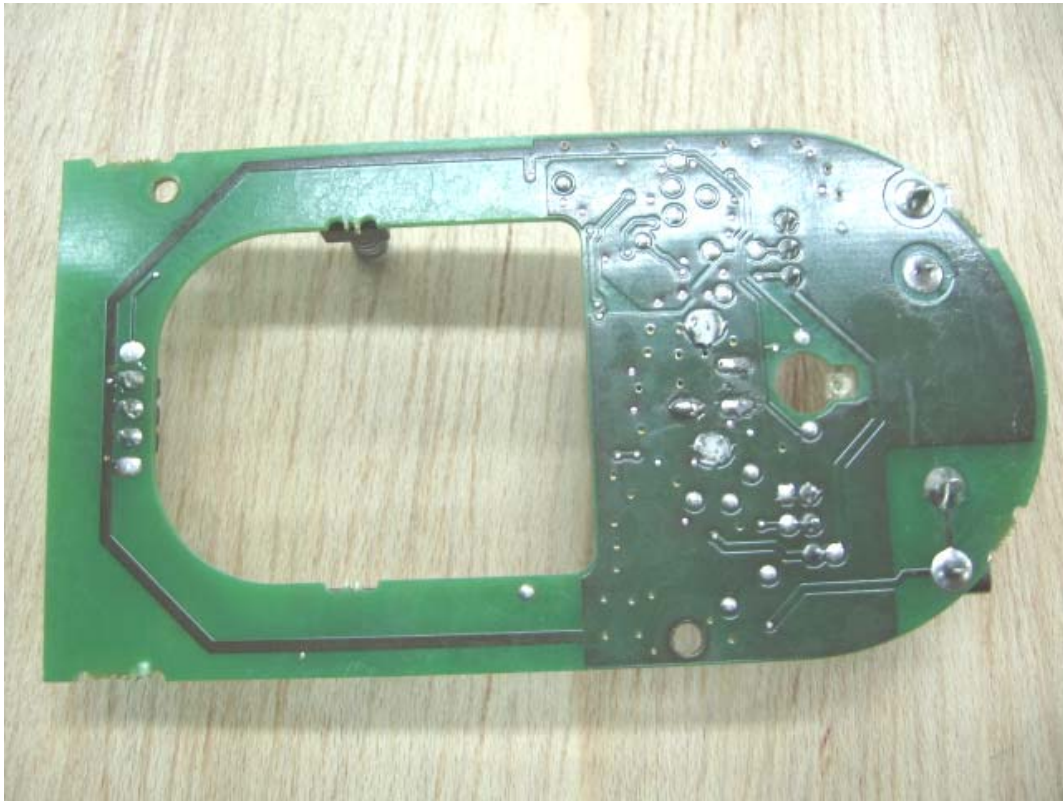


Figure 6: Bottom of CR123A

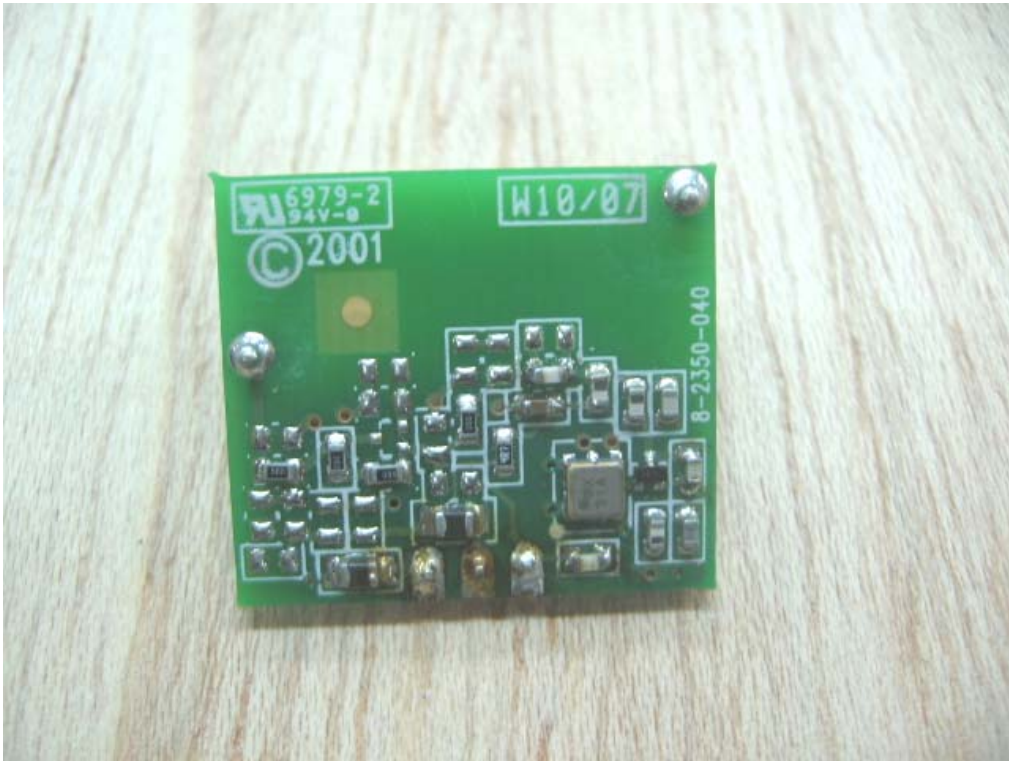


Figure 7: Bottom of transmitter



Figure 8: Top of transmitter

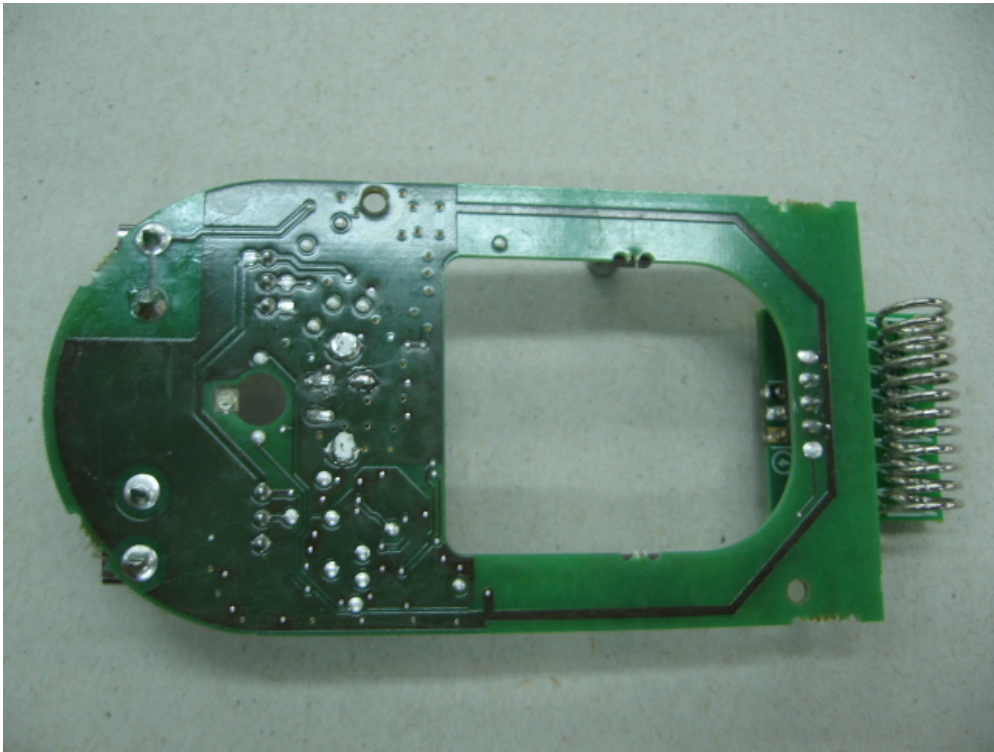


Figure 5: Bottom of PCB Boards