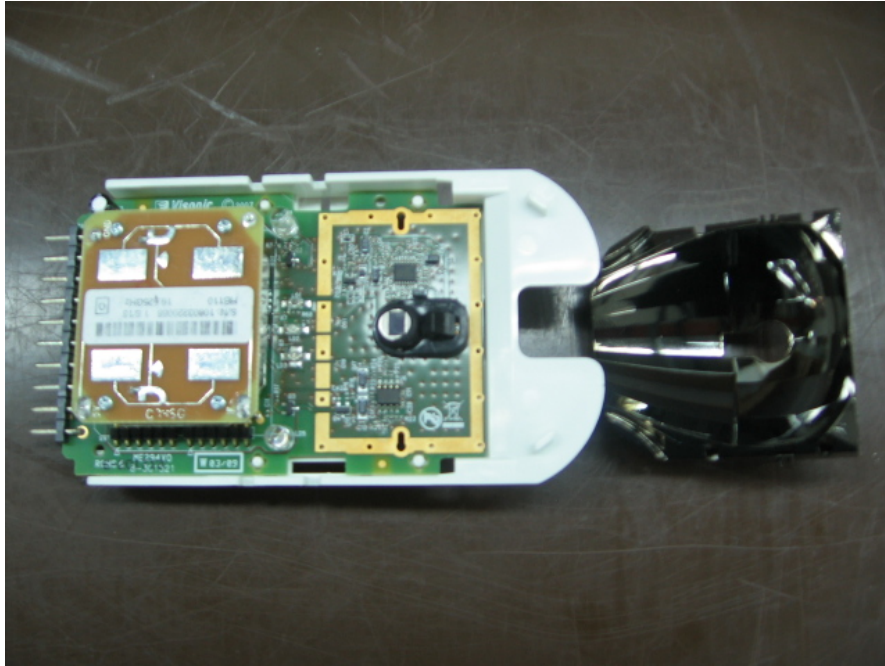


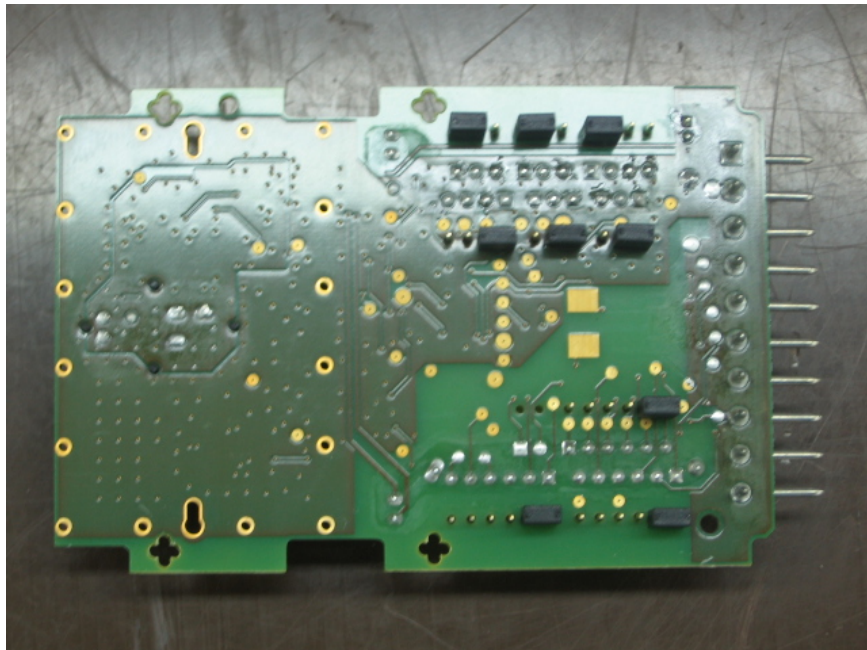
**Figure 1: Inside of Unit**



**Figure 2: Internal section of unit**



**Figure 3: PCB and Mirror**



**Figure 4: Bottom of PCB**

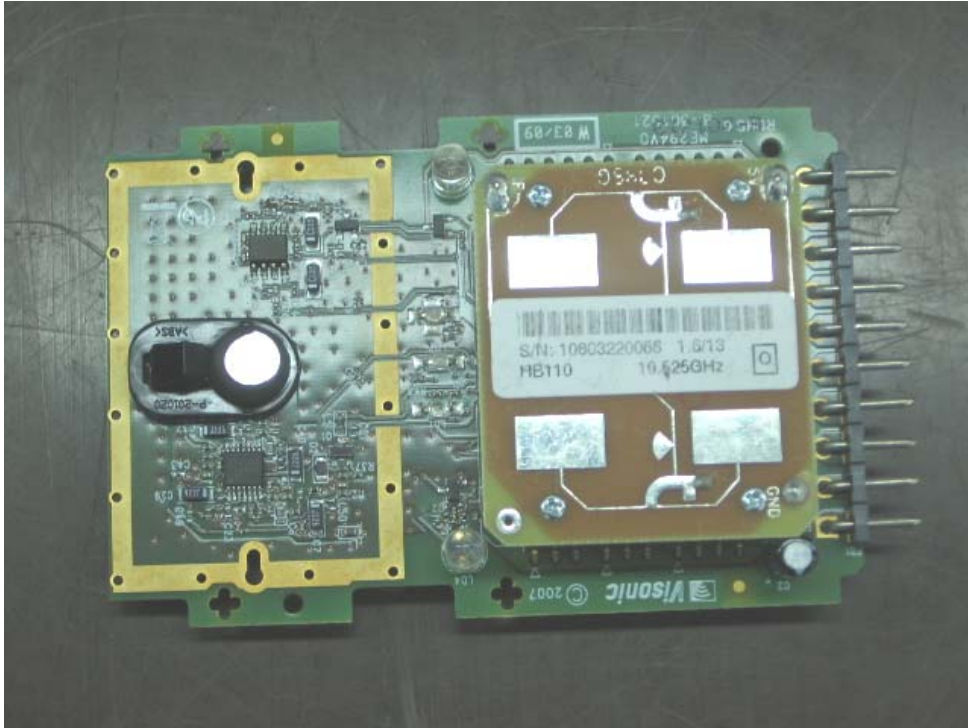


Figure 5: Top of PCB

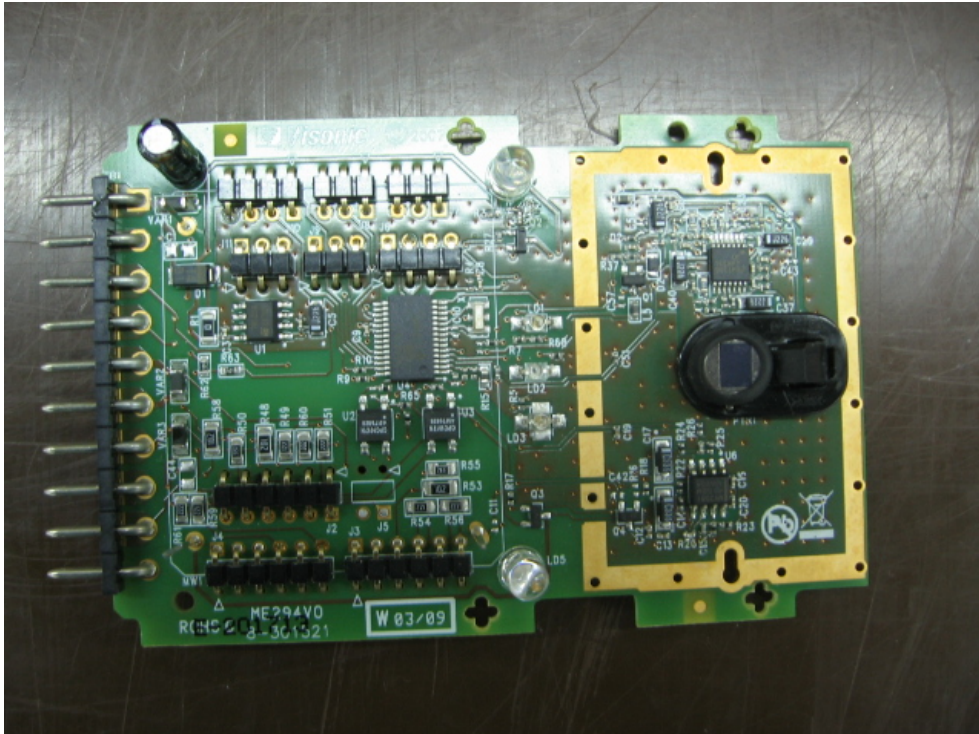
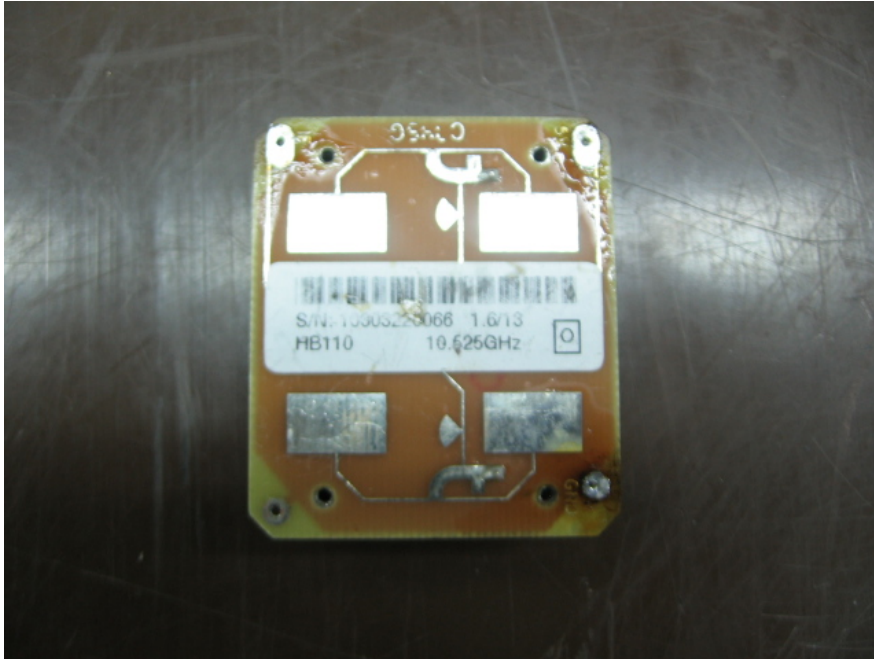


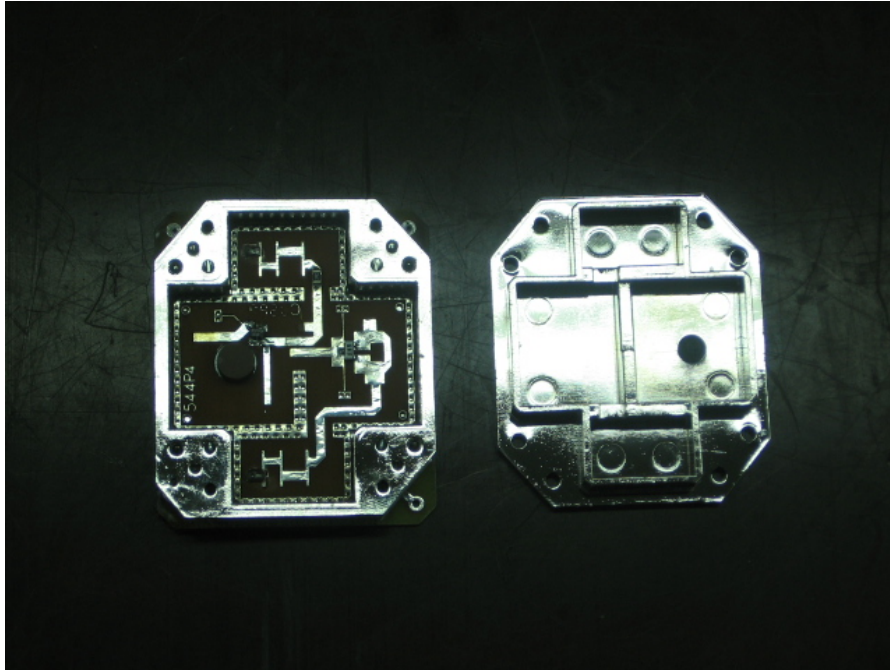
Figure 6: Top of PCB with HB110 removed



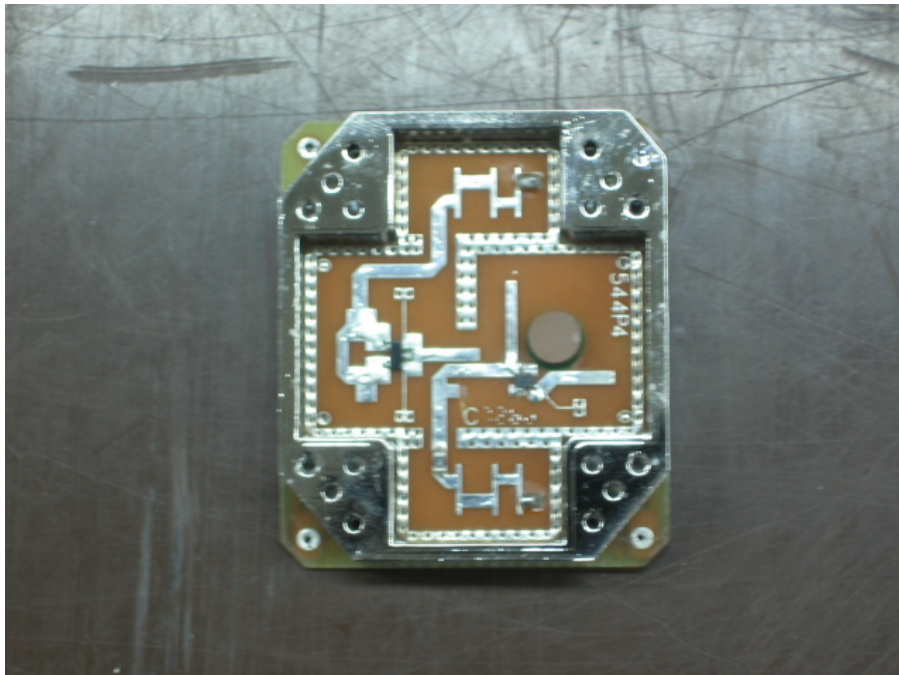
**Figure 7: Top of PCB with HB110 removed**



**Figure 8: Top of PCB with HB110 removed**



**Figure 9: Case of HB110 removed**



**Figure 10: Inside of HB110**