

INTERNAL PHOTOGRAPHS

This document contains 6 photographs

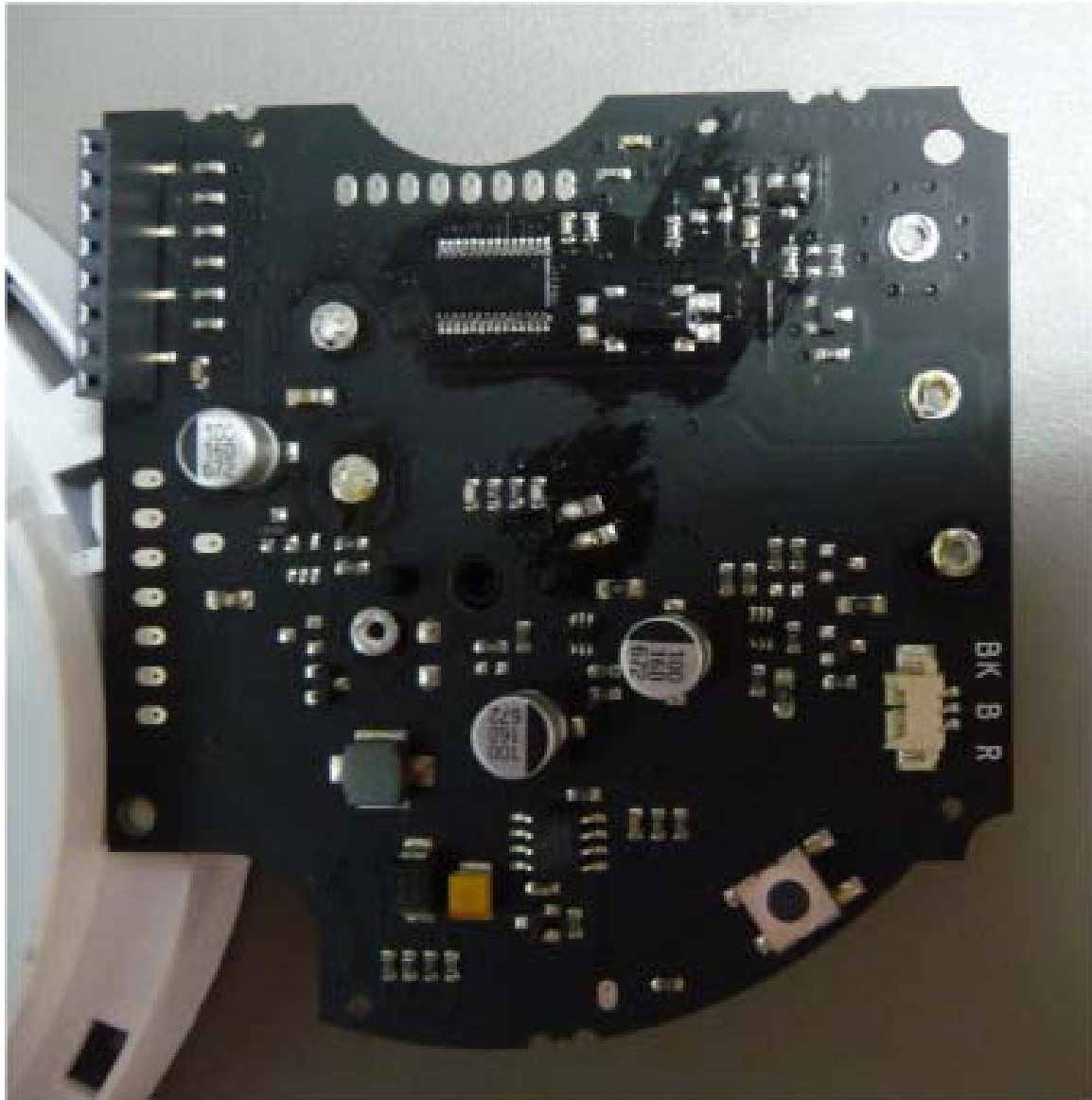
Photograph No.1
SMD-429 PG2 smoke detector internal view



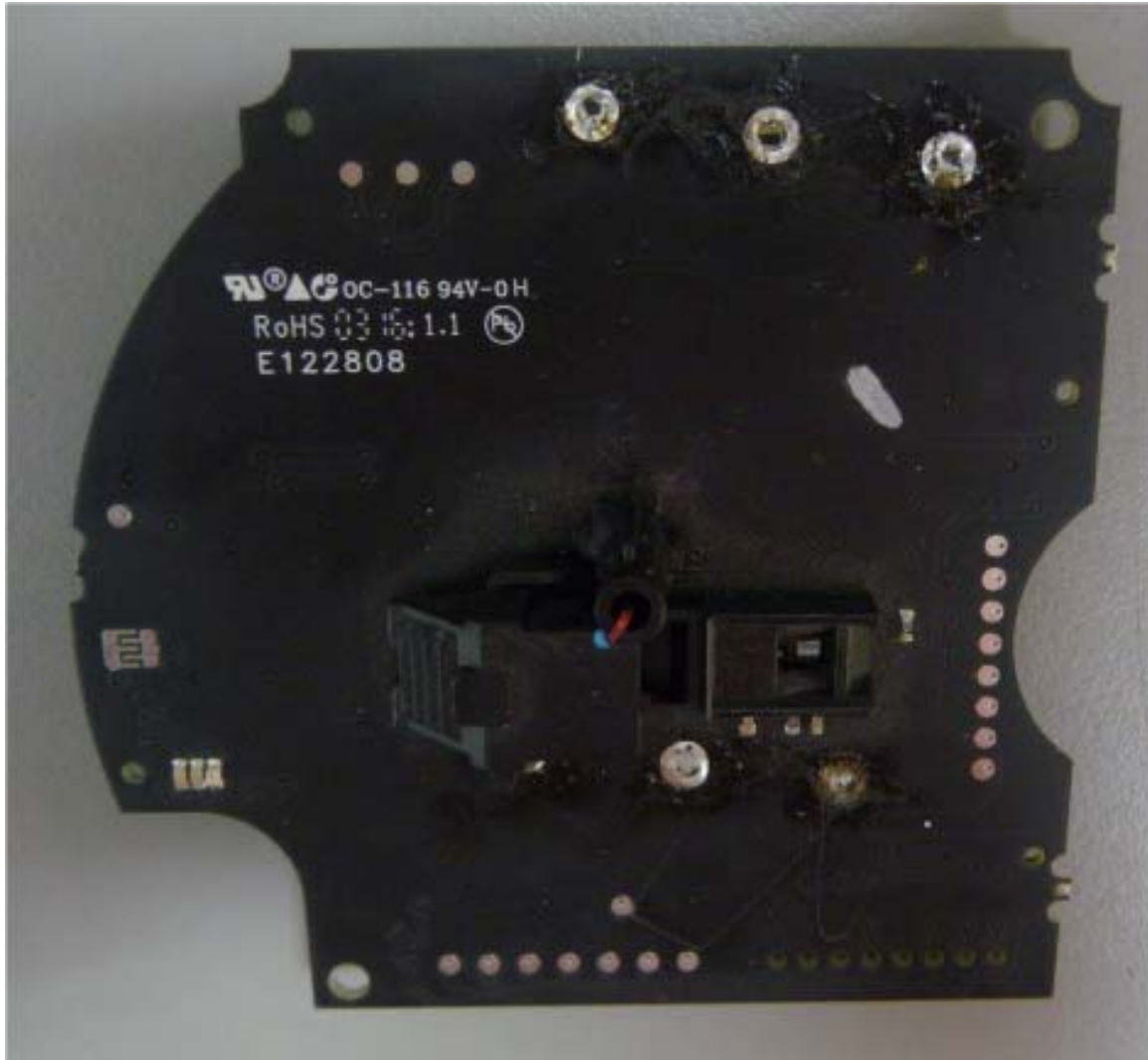
Photograph No.2
SMD-429 PG2 smoke detector internal view



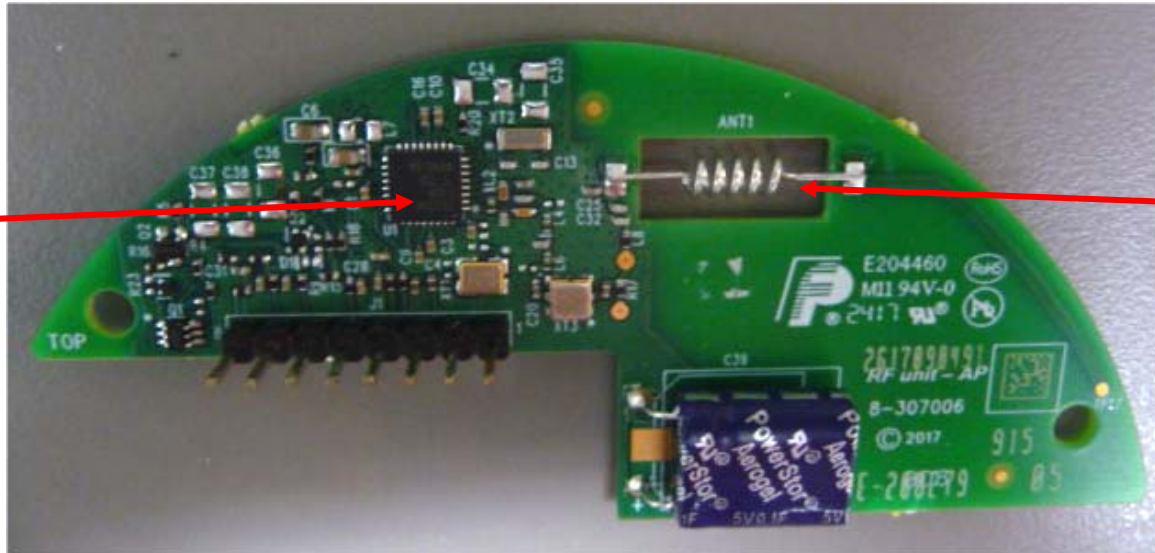
Photograph No.3
SMD-429 PG2 smoke detector PCB front view



Photograph No.4
SMD-429 PG2 smoke detector PCB rear side view



Photograph No.5
RF PCB front view



Radio chip

Antenna

Photograph No.6
RF PCB rear side view

