

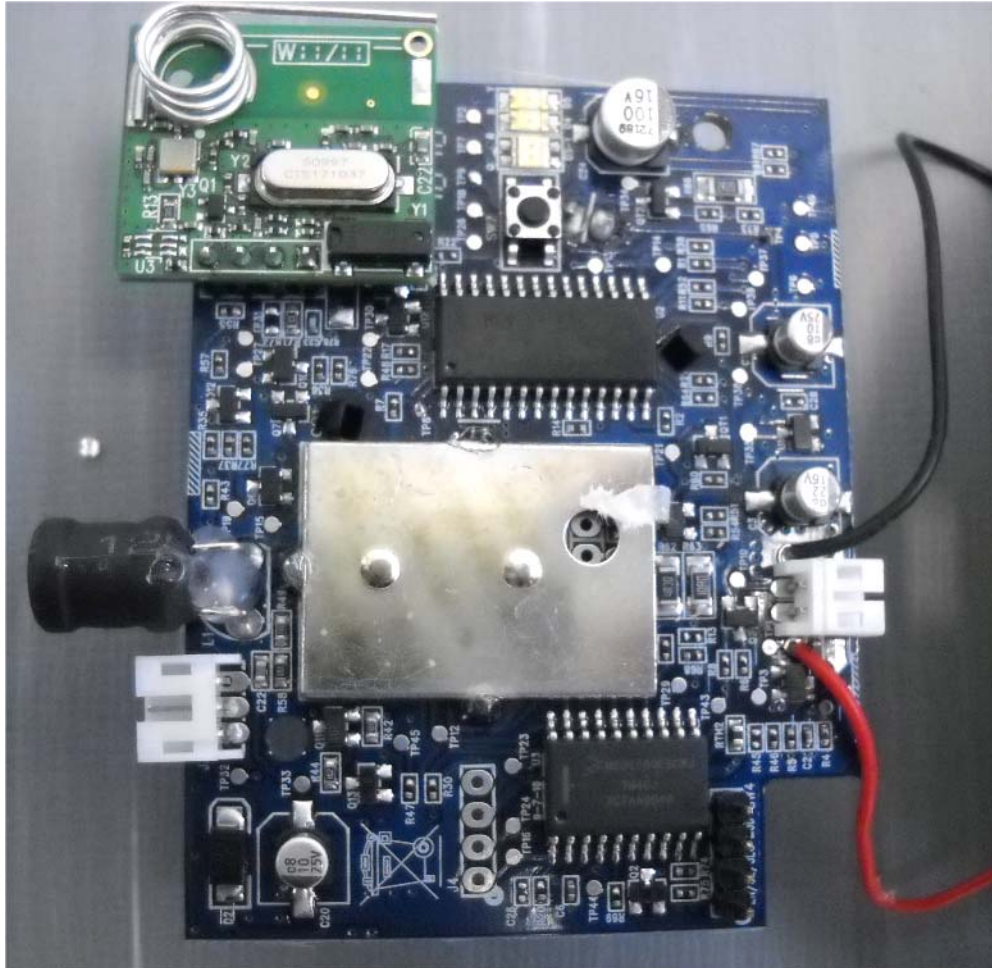
## **INTERNAL PHOTOGRAPHS**

This document contains 6 photographs

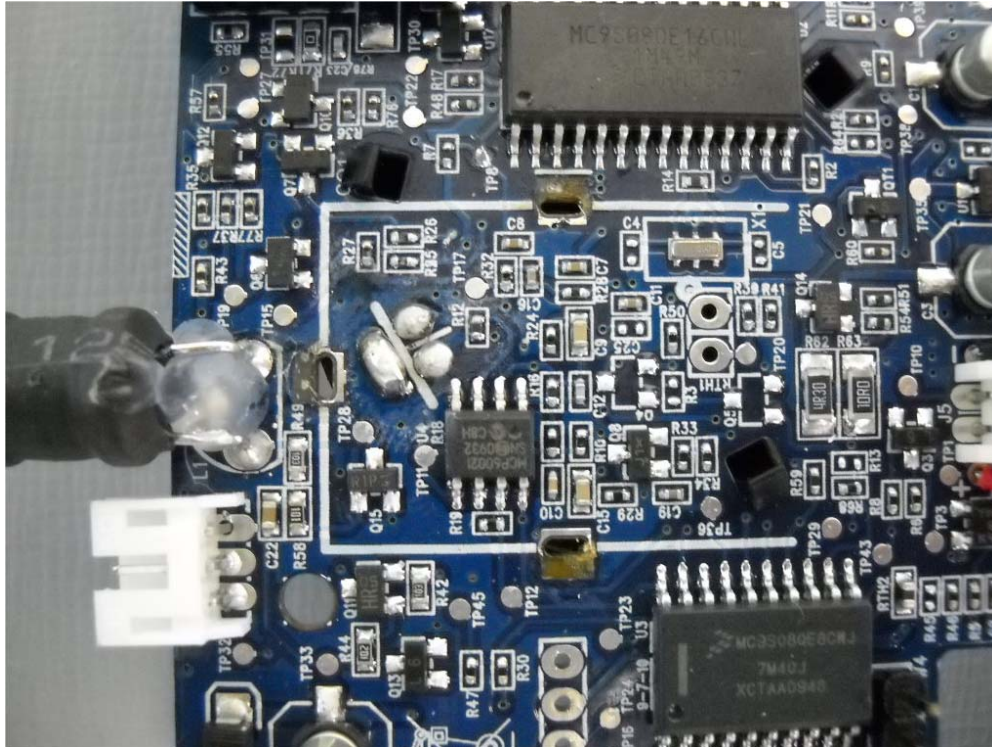
**Photograph No.1**  
**SMD-426 detector internal view**



Photograph No.2  
SMD-426 detector PCB front view



Photograph No.3  
SMD-426 detector internal view with shield removed



Photograph No.4  
Detector main PCB second side view



**Photograph No.5**  
**Detector RFD module front view**





Photograph No.6  
RFD module PCB second side view

