

Internal Photos

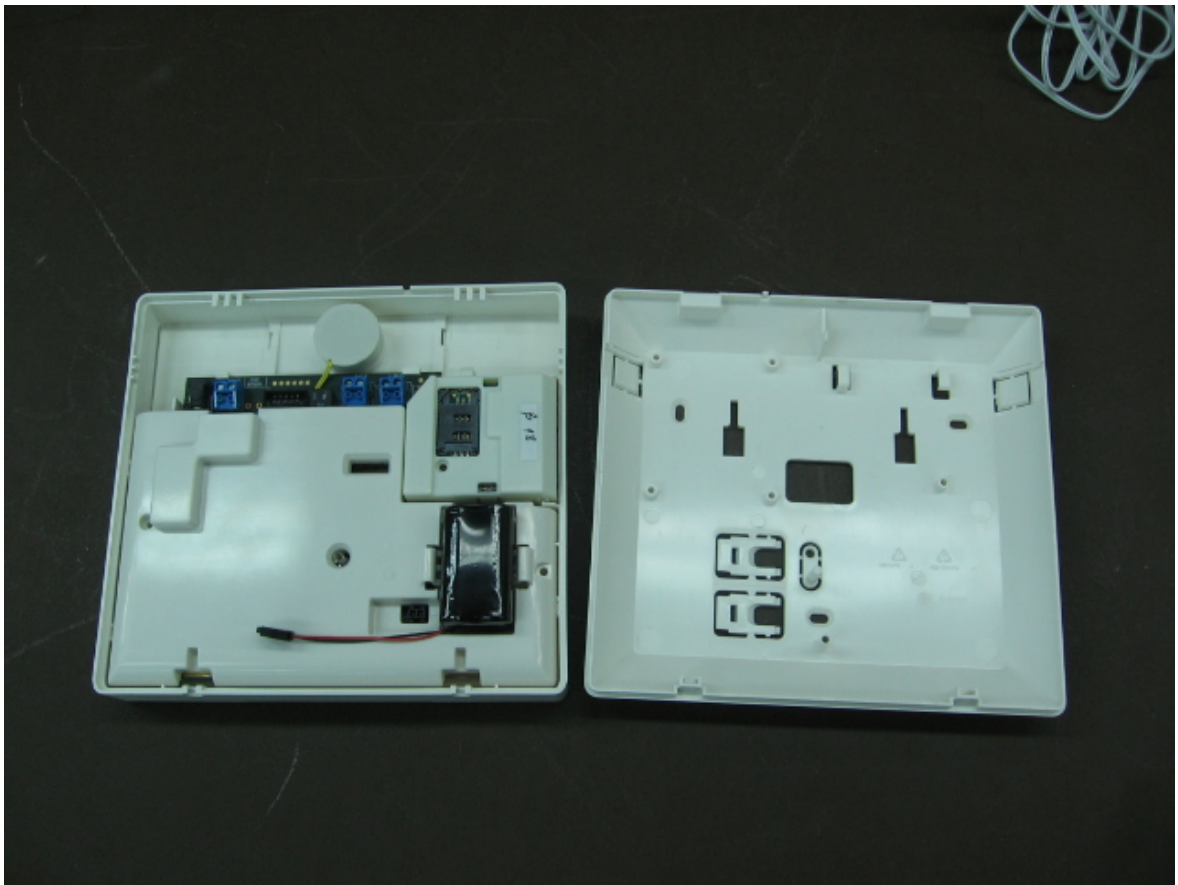


Figure 1: Unit Open (First Case)

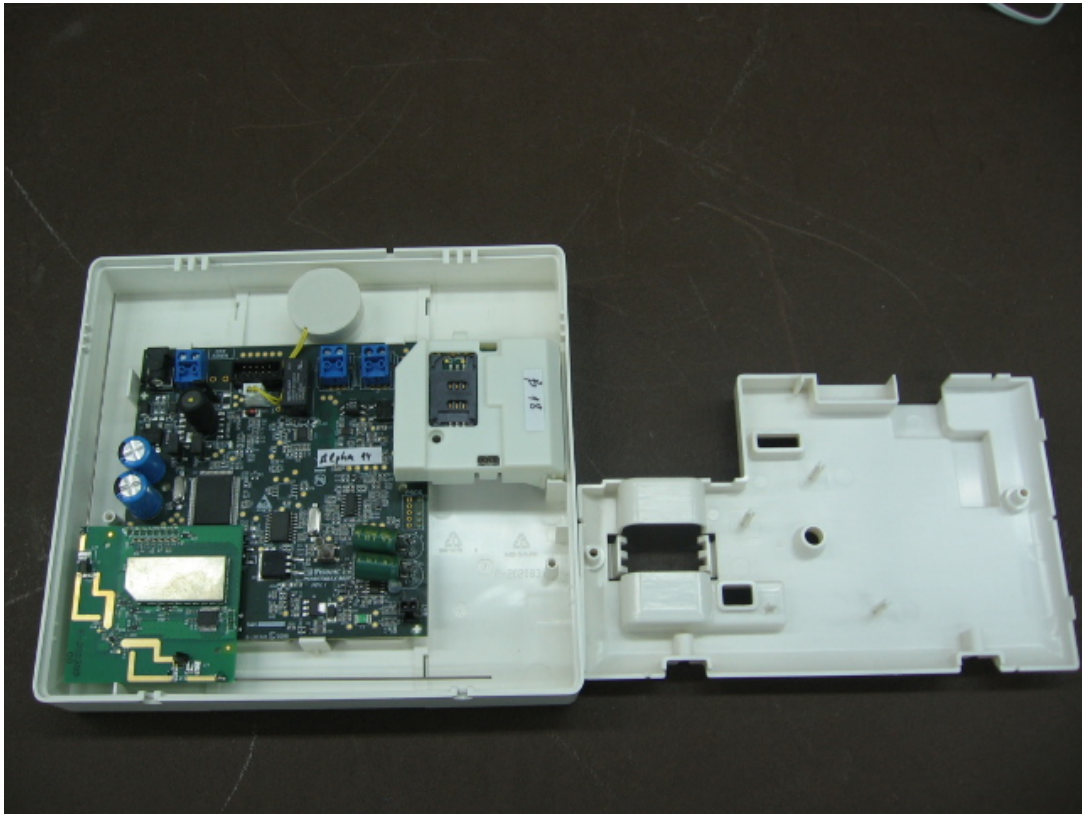


Figure 2: Unit Open (Second Case)



Figure 3: Internal Battery



Figure 4: GSM PCB in plastic case (Top)



Figure 5: GSM PCB removed from plastic case (Top)

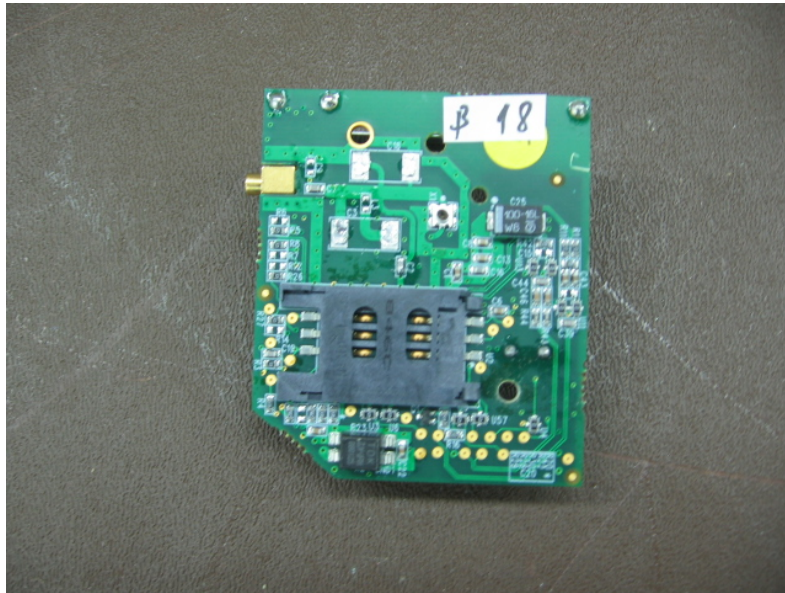


Figure 6: GSM PCB (bottom)]

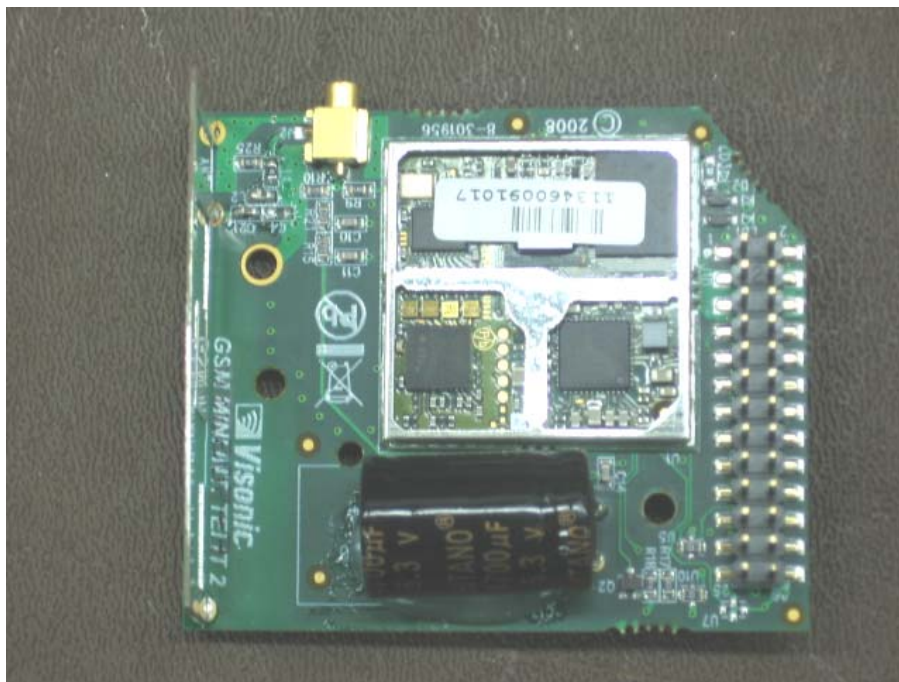


Figure 7: GSM PCB with GE864 metal case removed

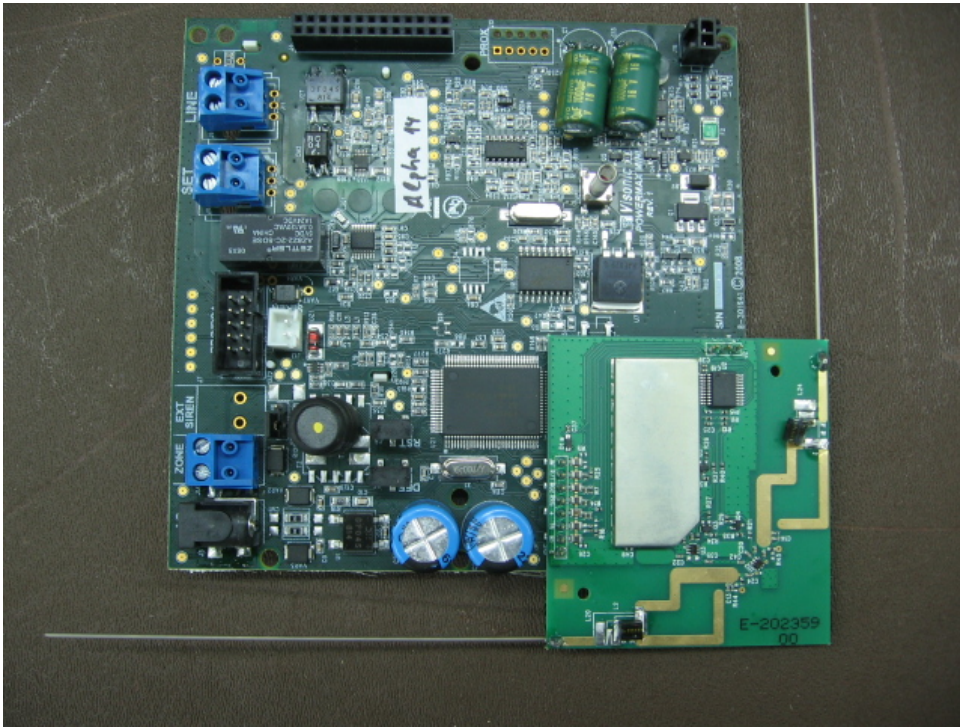


Figure 8: PowerMax Mini PCB and PMPRO Transceiver PCB (TOP)

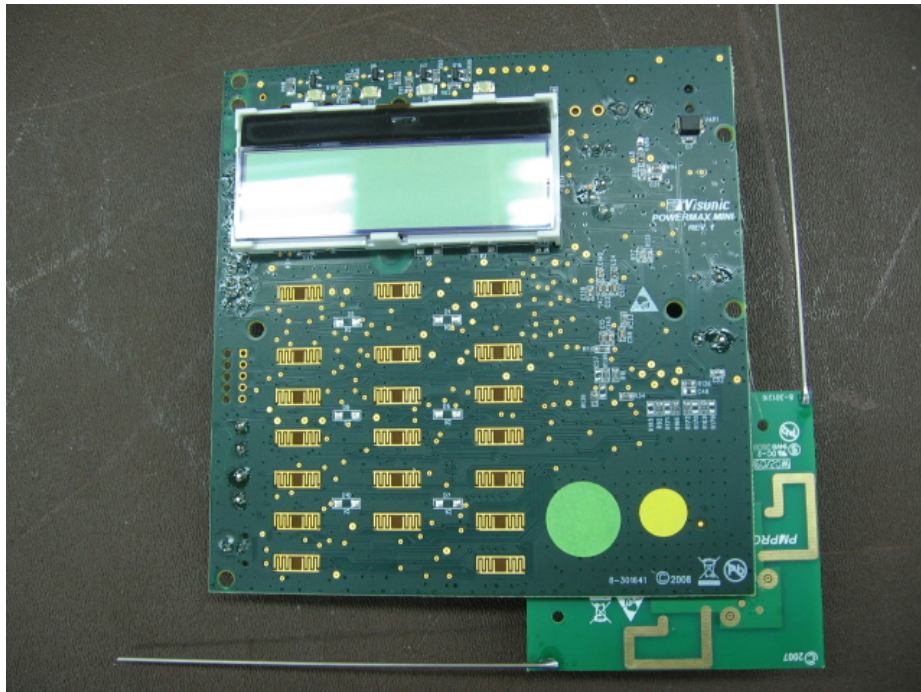


Figure 9: PowerMax Mini PCB and PMPRO Transceiver PCB (Bottom)

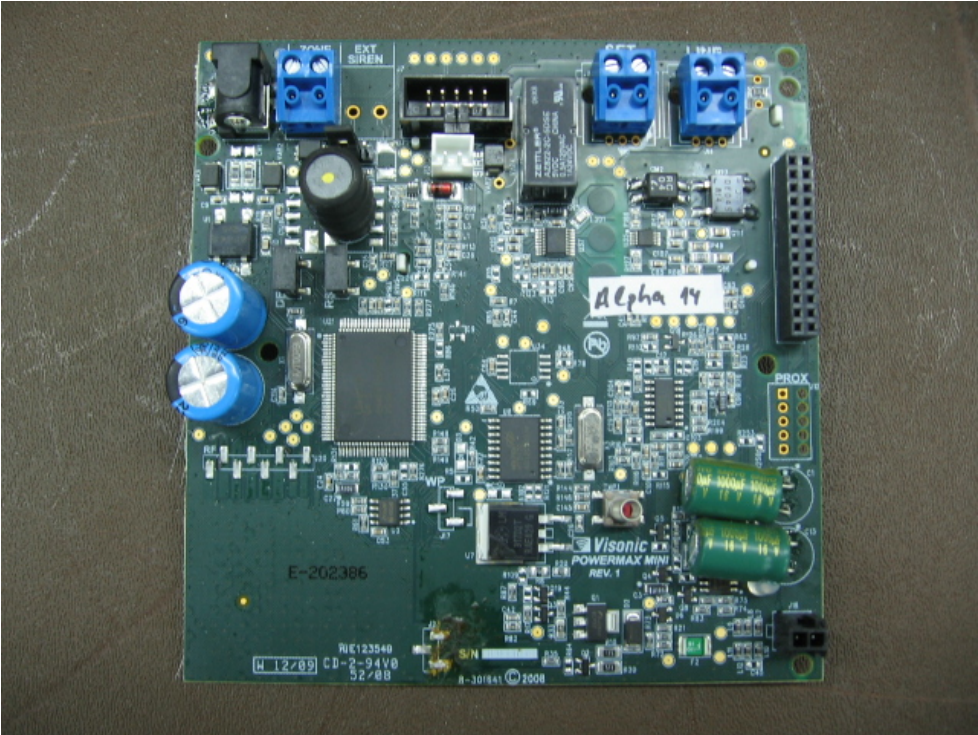


Figure 10: PowerMax Mini PCB (Top)

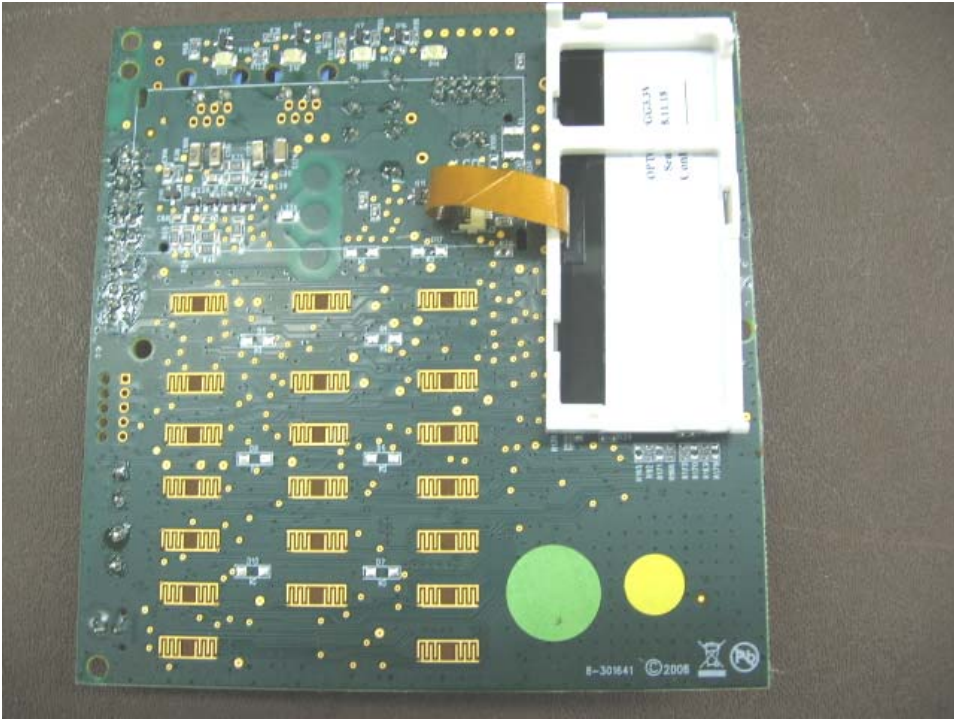


Figure 11: PowerMax Mini PCB with LCD removed

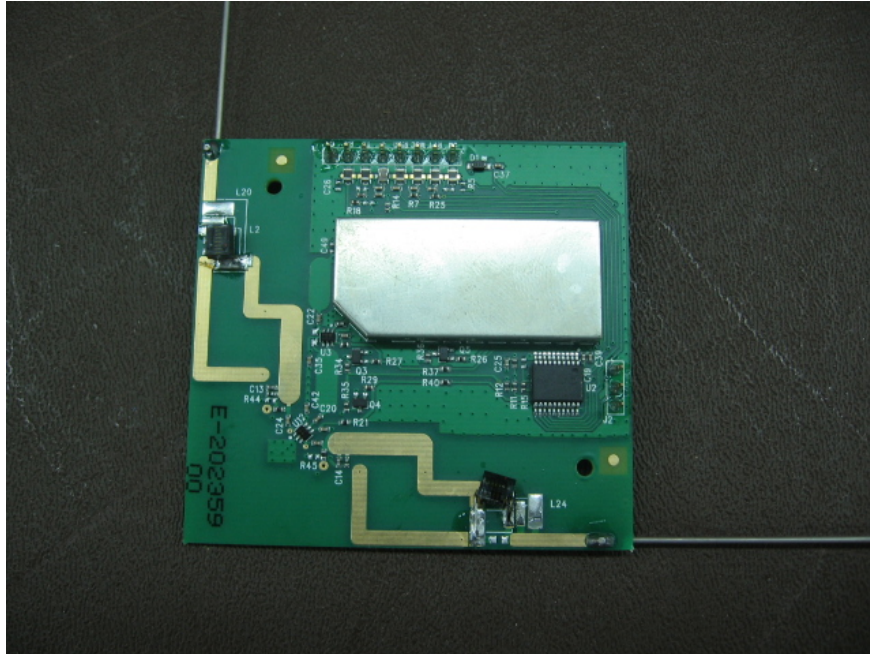


Figure 12: PMPRO Transceiver (Top)

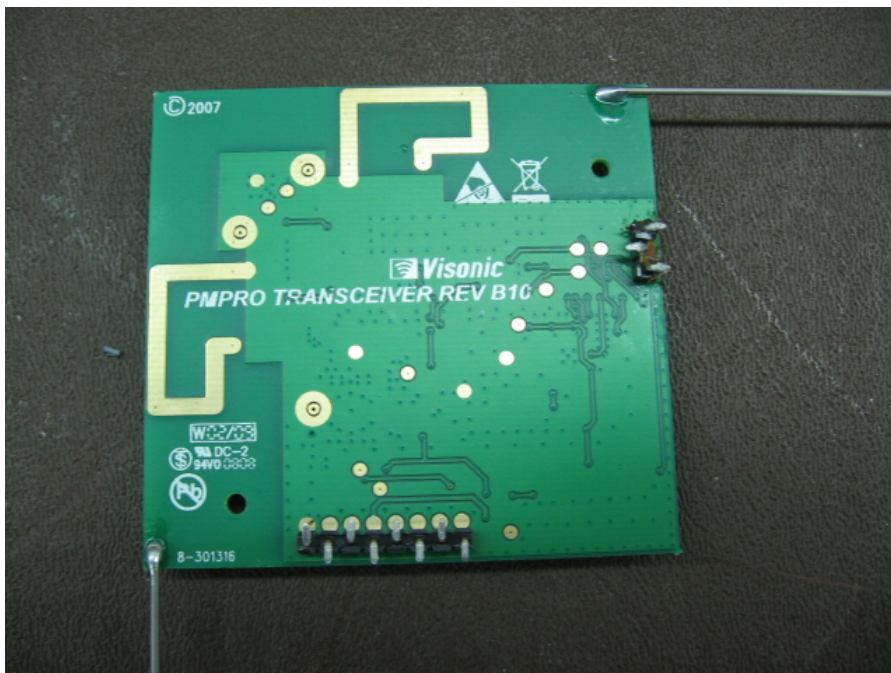


Figure 13: PMPRO Transceiver (Bottom)

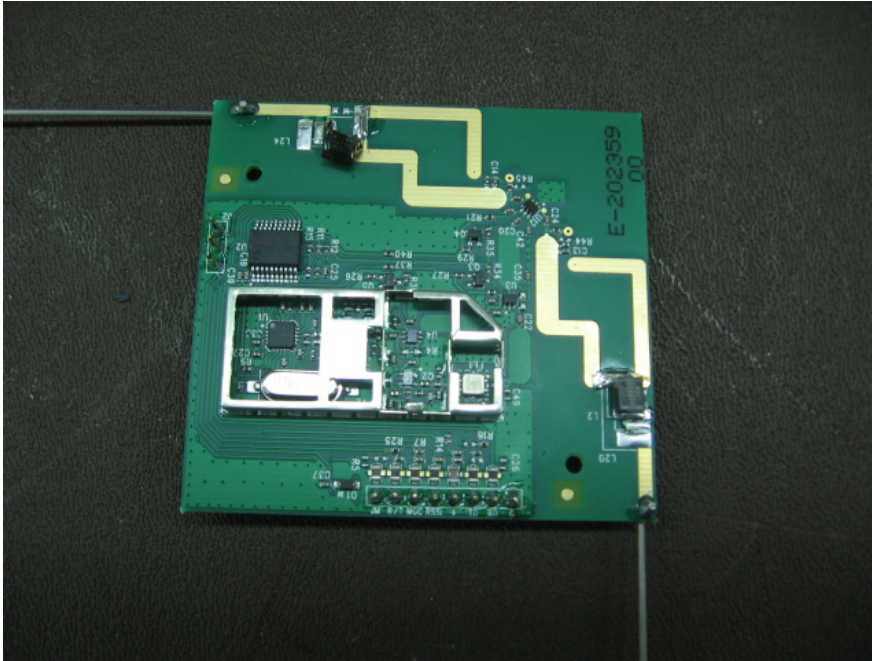


Figure 14: PMPRO Transceiver w/o metal case (Top)

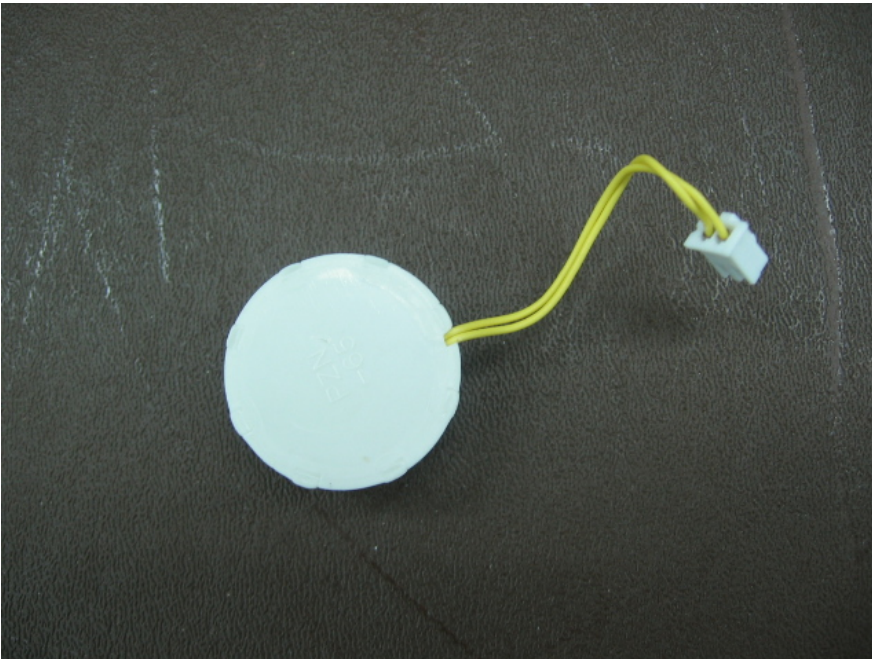


Figure 17: Siren

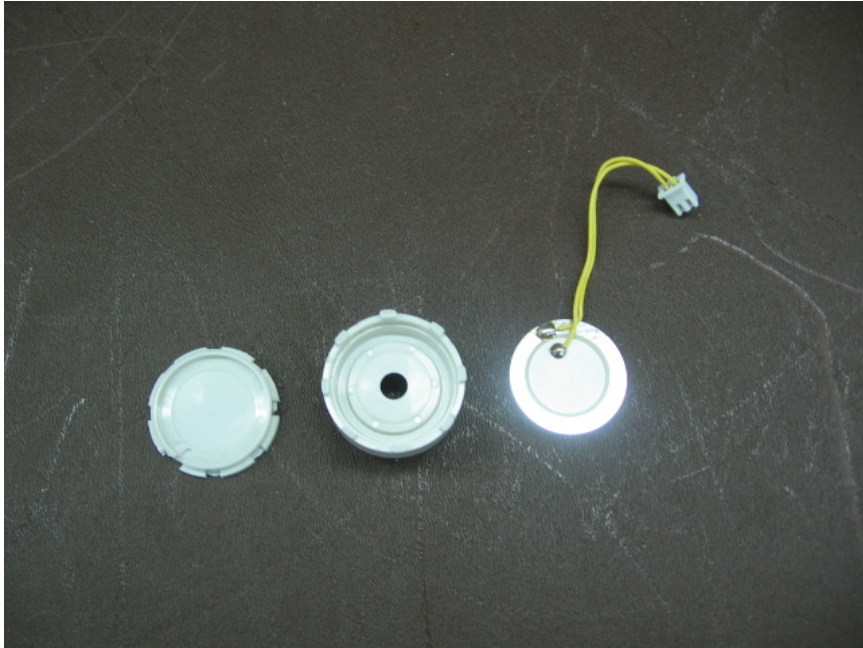


Figure 18: Siren (Open)



Figure 19: Siren (Inside Unit)