

User Manual

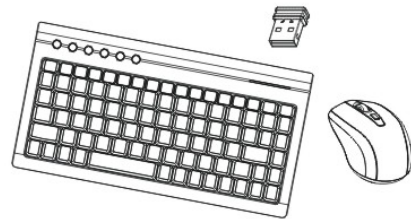
Restoring factory default settings

When you find this set doesn't work, you can make the mouse or keyboard in working condition by restoring the mouse back to factory default settings.

- 1: check the battery volume is normal; if the battery is used out, please replace new batteries.
- 2: For the mouse, you can press the right button and middle button (under the scroll wheel) simultaneously; then
- 3: insert the nano receiver onto the USB port of PC or notebook.
- 4: For the keyboard, you can press the keys of "Esc" and "Q" at the same time, then
- 5: Insert the nano receiver onto the USB port of PC or notebook.

Instruction Manual

Auto-link RFKeyboard & Optical Mouse



CAUTION: To use this device properly, please read the user's guide before installation.

Installing the Batteries

Wireless keyboard and mouse are use two AAA alkaline batteries.

Installing Batteries In the Mouse

Step 1. Open the battery compartment

Step 2. Insert the batteries as shown inside the battery compartment.

Step 3. Replace the cover.

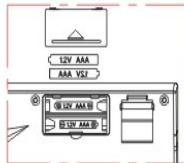


Install the batteries in the keyboard

Step 1. Remove the battery compartment cover on the bottom of the keyboard by squeezing the cover in from the tab to release it.

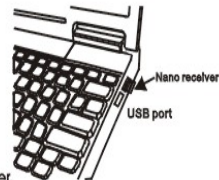
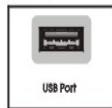
Step 2. Insert the batteries as shown inside the battery compartment.

Step 3. Replace the cover.



Connecting the Receiver

The receiver is insert to USB port immediate, for notebook or PC.



1. Connect the USB plug to USB port of your computer.

CAUTION:


Windows 98 or higher is required for USB port installation, connect the receiver cable to the USB port on computer. For windows, you may be prompted to insert the windows software CD, insert this software CD into the computer's CD-ROM driver when asked to do so. Then follow the on-screen instructions.

Hotkeys on the keyboard

This keyboard have 6 hotkeys located on the top of keyboard.

Internet Hotkeys

 Web home

 My favourite

 Email

Multimedia Hotkeys

 Media

 Play/Pause

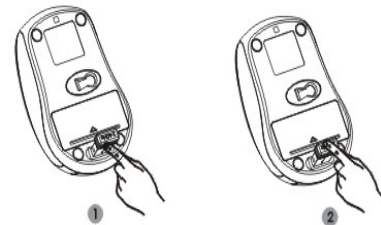
Power manage hotkeys

 Sleep

Obtain the receiver on the mouse

1: when you want use the mouse, you can take out the receiver to computer by the list ① step.

2: when you need stop the work or to travel, you can store the receiver on the mouse for the moving by the list ② step.



Power-Save function:

* This mouse is equipped with Traveling-Power-Save function. When you are traveling with this mouse, the LED of the mouse will be switched automatically for the purpose of power-save, but the pre-condition is that the receiver is disconnected with your notebook or PC.

* when your mouse no any click or scroll or moving, the mouse will come to sleep state for the economize after about 30 minutes, for the wake up, you can click button for this

FCC Statement

This device complies with Part 15 of the FCC Rules.

Operation is subject to the following two conditions:

- (1) This device may not cause harmful interference, and
- (2) This device must accept any interference received, including interference that may cause undesired operation. Note: The manufacturer is not responsible for ANY interference, for example RADIO or TV interference, caused by unauthorized modifications to this equipment. Such modifications could void the user's authority to operate the equipment.

Note

This equipment has been tested and found to comply with the limits for a Class B digital device, pursuant to part 15 of the FCC Rules.

These limits are designed to provide reasonable protection against harmful interference in a residential installation. This equipment generates, uses and can radiate radio frequency energy and, if not installed and used in accordance with the instructions, may cause harmful interference to radio communications. However, there is no guarantee that interference will not occur in a particular installation. If this equipment does cause harmful interference to radio or television reception, which can be determined by turning the equipment off and on, the user is encouraged to try to correct the interference by one or more of the following measures:

Reorient or relocate the receiving antenna. Increase the separation between the equipment and receiver. Connect the equipment into an outlet on a circuit different from that to which the receiver is connected. Consult the dealer or an experienced radio/TV technician for help.