

Installing the Batteries

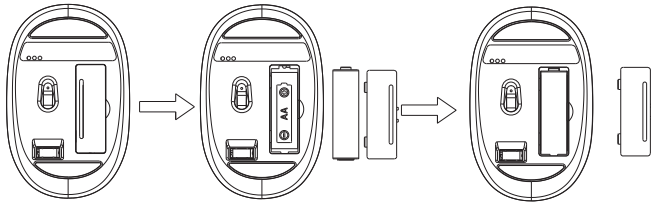
The RF2.4GHz Optical mouse use one AA alkaline batteries.

Installing Batteries in the Mouse

Step 1. Open the battery compartment

Step 2. Insert the batteries as shown inside the battery compartment

Step 3. Replace the cover

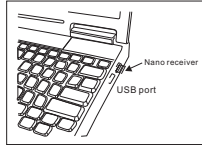


Connecting the Receiver

The receiver is insert to USB port immediate, or by a extra USB cable.

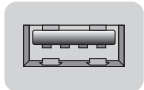


USB Port

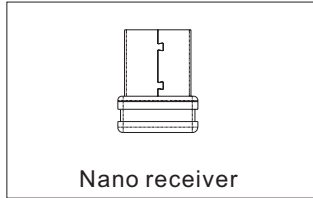


Connect the USB plug to USB port of your computer

Connecting the Receiver



USB Port



Nano receiver

State of standby and wake up the mouse

Without any clicks or scroll movement for 8 minutes, the mouse will go into standby mode. Click any button or scroll the wheel to wake up the mouse. Under this economize mode, the optical Red LED will turn of automatically and the mouse won't respond by moving it.

This device complies with Part 15 of the FCC Rules and contains licence-exempt transmitter(s)/receiver(s) that comply with Innovation, Science and Economic Development Canada's licence-exempt RSS(s). Operation is subject to the following two conditions: (1) this device may not cause harmful interference, and (2) this device must accept any interference received, including interference that may cause undesired operation

This device has been tested and found to comply with the limits for a Class B digital device, pursuant to Part 15 of the FCC Rules. These limits are designed to provide reasonable protection against harmful interference in a residential installation. This device generates, uses and can radiate radio frequency energy and, if not installed and used in accordance with the instructions, may cause harmful interference to radio communications.

However, there is no guarantee that interference will not occur in a particular installation. If this device does cause harmful interference to radio or television reception, which can be determined by turning the device off and on, the user is encouraged to try to correct the interference by one or more of the following measures:

- Reorient or relocate the receiving antenna.
- Increase the separation between the device and receiver.
- Connect the device into an outlet on a circuit different from that to which the receiver is connected.
- Consult the dealer or an experienced radio/TV technician for help

Changes or modifications not expressly approved by the party responsible for compliance could void the user's authority to operate the equipment

Cet appareil contient des émetteurs / récepteurs exemptés de licence conformes aux RSS (RSS) d'Innovation, Sciences et Développement économique Canada. Le fonctionnement est soumis aux deux conditions suivantes:

- (1) Cet appareil ne doit pas causer d'interférences.
- (2) Cet appareil doit accepter toutes les interférences, y compris celles susceptibles de provoquer un fonctionnement indésirable de l'appareil

Obtain the receiver on the mouse

- 1.If you want to use the mouse,pls take out the receiver (shown in picture ①) and connect it to computer;
- 2.If you want to stop using the mouse, pls store the receiver onto the mouse (shown in picture ②);



①

Take out the receiver



②

Store the receiver

Restoring factory default settings

Mouse:

When the enduser finds the wireless mouse doesn't work, please check:

1. Whether the battery is used out, if yes, please replace with new battery;
2. If the led on mouse bottom is off, please do the following steps to recovery the default setting (automatic pairing):
Step one: unplug and plug again the nano receiver onto an available USB port of computer,

Step two: make the wireless mouse close to the nano receiver (within 10 cm), take out the battery and install the battery again inside the Battery compartment, if we find the Led on the mouse bottom on, we can start using the wireless mouse again.

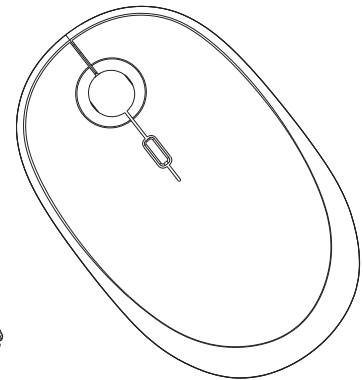
Power-Save function:

1. Without using the mouse for 1 minute, the mouse will go into sleep mode level1. You can move it to wake up the mouse. The Red LED is still on.
2. Without using the mouse for 1-8 minutes, the mouse will go into sleep mode level 2. You can move it to wake up the mouse. The Red LED keep flashing.
3. Without using the mouse for more than 8 minutes, the mouse will go into deep sleep mode. The LED turn off automatically.

Model:M2AG

Instruction Manual

Wireless Silent Mouse



CAUTION: To use this device properly, please read the user's guide before installation.