



F511E/F511W
Quick Installation Guide

Zavio F511E / F511W Quick Installation Guide

Please follow the installation steps below to set up your F511E / F511W IP Camera.

Check the package contents against the list below. *See P.1*

Physical overview. *See P.1*

Install the hardware and connect all cables. *See P.2*

Microsoft OS: Use the software CD to install Intelligent IP Installer. *See P.3*

Access the IP Camera using Intelligent IP Installer. *See P.3*

Mac OS using Safari Browser. *See P.5*

Change lighting environment setting. *See P.6*

Change the Web Interface into your preferred language. *See P.6*

Use IP Camera via Mobile Phone. *See P.6*

Wireless Setting(F511W Model). *See P.7*

Windows Live Messenger Setting. *See P.7*

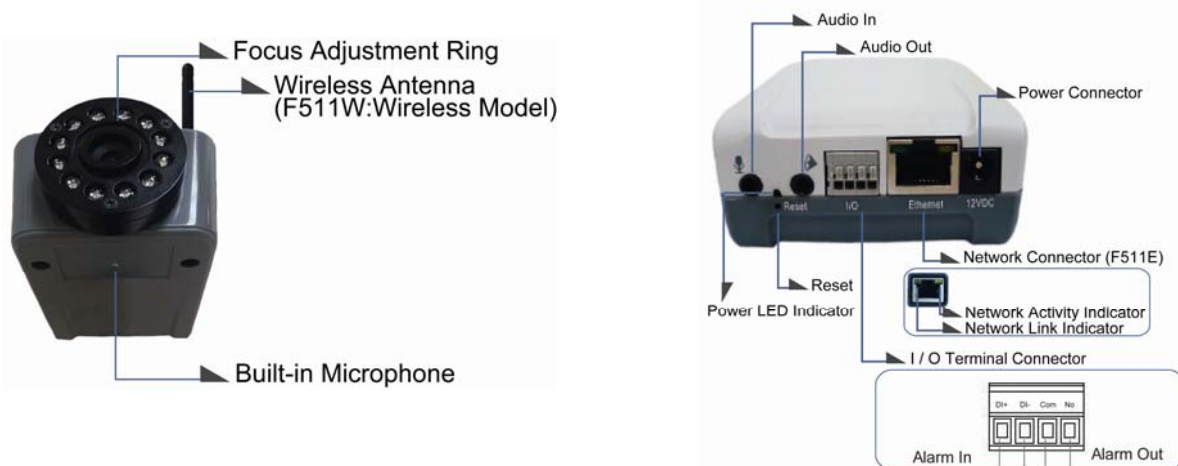
Access to Internet via Static IP, Dynamic IP or both. *See P.9*

For more information, please check the User Manual available in the Software CD or you can download the latest software from <http://www.zavio.com>

Package Contents

Camera	F511E / F511W IP Camera
Quick Installation Guide	Brief product information and quick installation
Software CD	IP Surveillance Software Intelligent IP Installer User Manuals Language Packs
Mounting Bracket	Three screw, Lock ring, Brace and Base plate
Antenna	For connection of IEEE 802.11 b / g wireless network (F511W model)
Adaptor	12V DC, max 6W

Physical overview



Focus Adjustment Ring: Adjust the focus ring to get a clear image.

Reset: When the device is powered, press the Reset Button to reboot the device, or hold the Reset Button for 10 seconds to set the settings back to factory default

Install the hardware and connect all cables

a. Wall mounting and Ceiling mounting

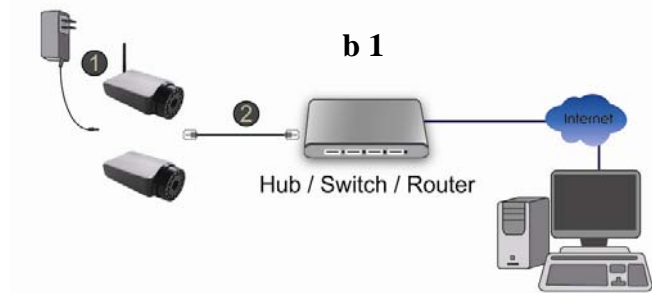
1. Use the 3 supplied screws to fix the base plate to a flat surface.
2. Loosen the lock ring to adjust the desired angle of the camera.
3. Tighten the lock ring.



b. Connect all cables

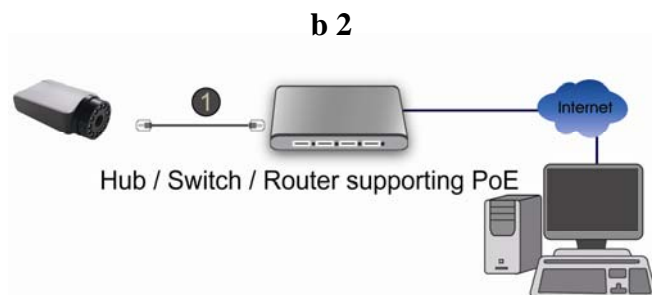
b1. Without Power over Ethernet (PoE) connection (F511E / F511W)

1. Connect the power adaptor to the IP Camera.
2. Using a standard RJ-45 network cable, connect the IP Camera to a normal Hub / Switch / Router.



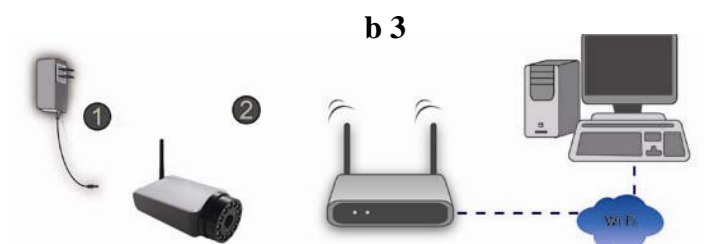
b2. Power over Ethernet (PoE) connection (F511E Model)

1. Using a standard RJ-45 network cable, connect the IP Camera to a PoE-enabled Hub / Switch / Router



b3. Wireless connection (F511W Model)

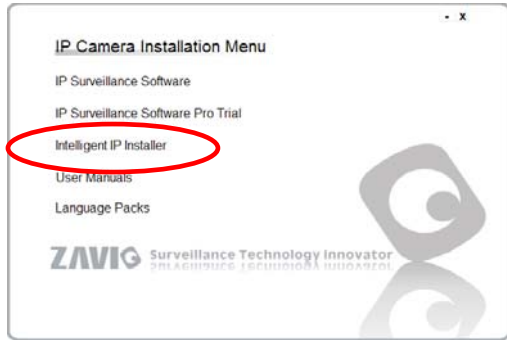
1. Connect the power adaptor to IP Camera.
2. Connect to Wi-Fi



Microsoft OS: Use the software CD to install Intelligent IP Installer

Power on your PC and insert the CD-ROM. The setup page will show up automatically. Please follow those steps to install the firmware.

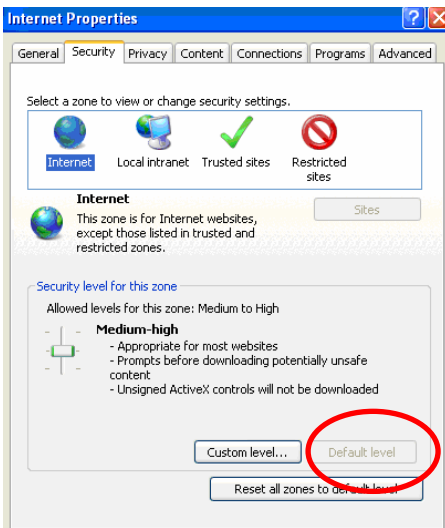
Select **“Intelligent IP Installer”** and follow the installation process to complete the installation.



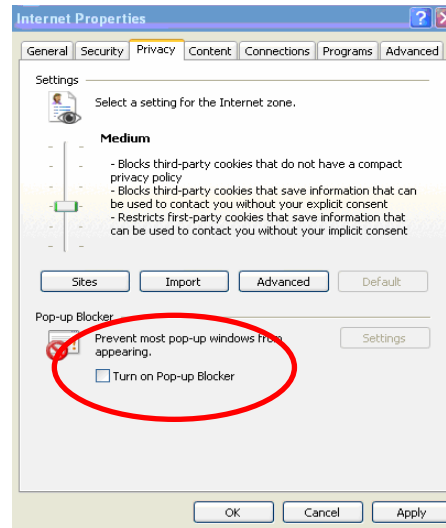
Access the IP Camera using Intelligent IP Installer

1. Before using Intelligent IP Installer, please check two setting.

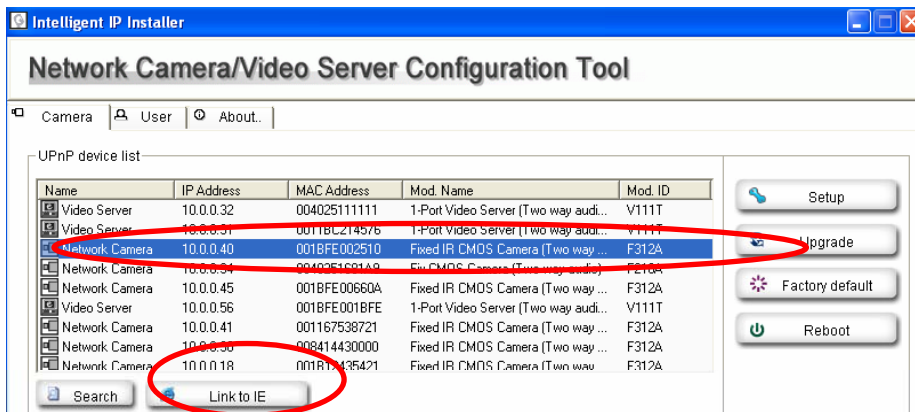
a. Browser's Internet Properties → Security
→ **Default Level**



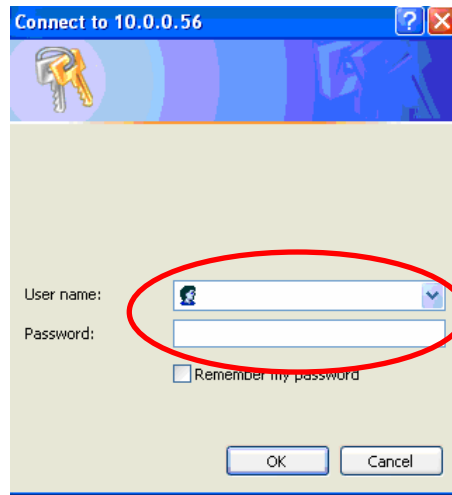
b. Browser's Internet Properties → Privacy
→ **Uncheck Pop-up Blocker**



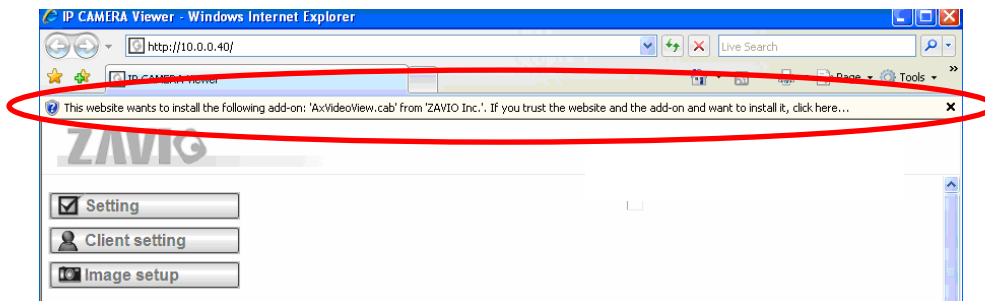
2. Click the Intelligent IP Installer Icon on your desktop. The main page will show up listing all active camera and video server devices. Select the relevant IP camera from the list and click **Link to IE**.



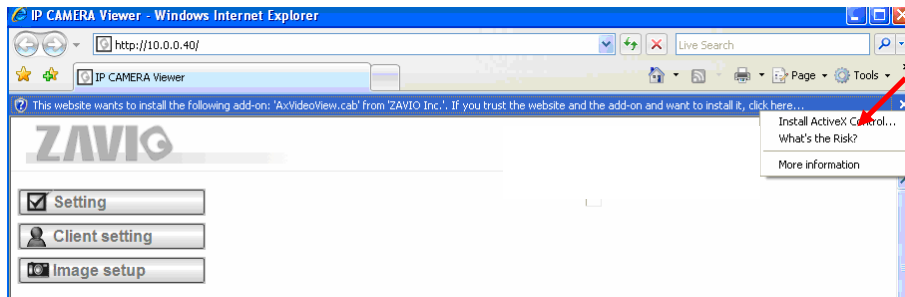
3. Enter your Username and Password to login to the IP Camera.
(Default is admin / admin)



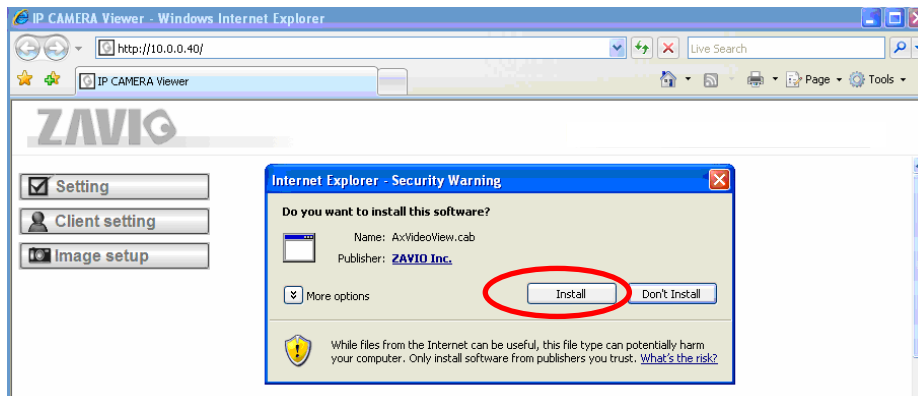
4. When accessing the IP Camera for the first time, a yellow information bar appears below the address bar: This website wants to install the following add-on: 'AxvideoView.cab from 'Zavio Inc'.



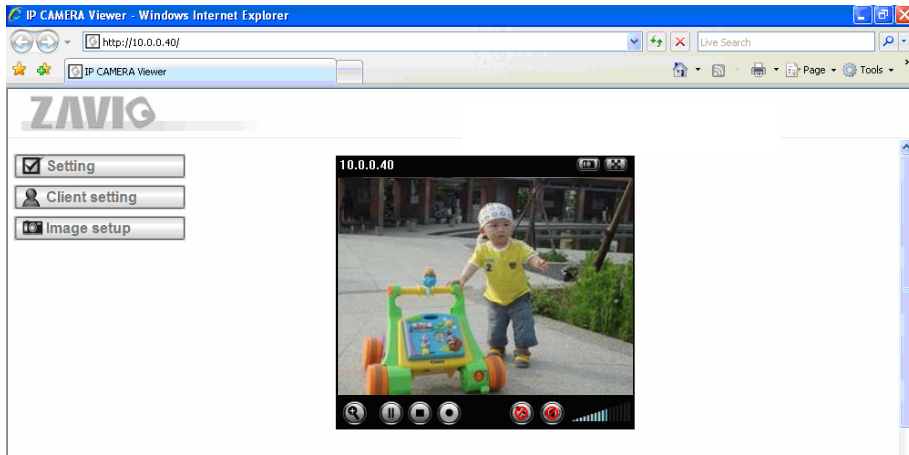
5. Click the information bar, and select **Install ActiveX control**.



6. Click **Install**.

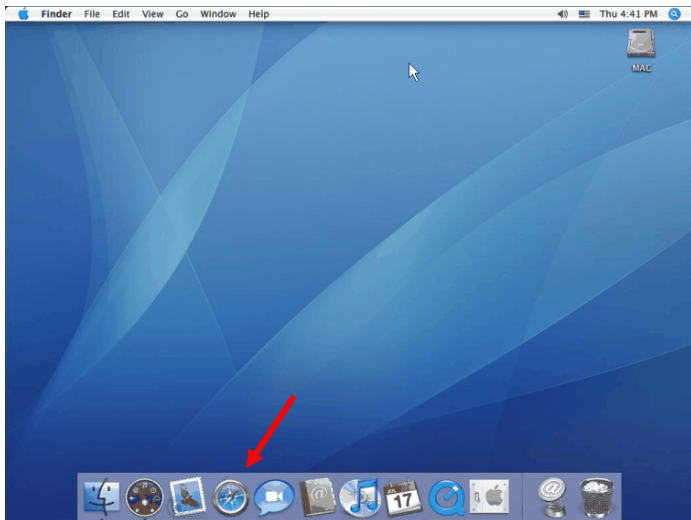


7. Live video displays in the centre of your web browser.

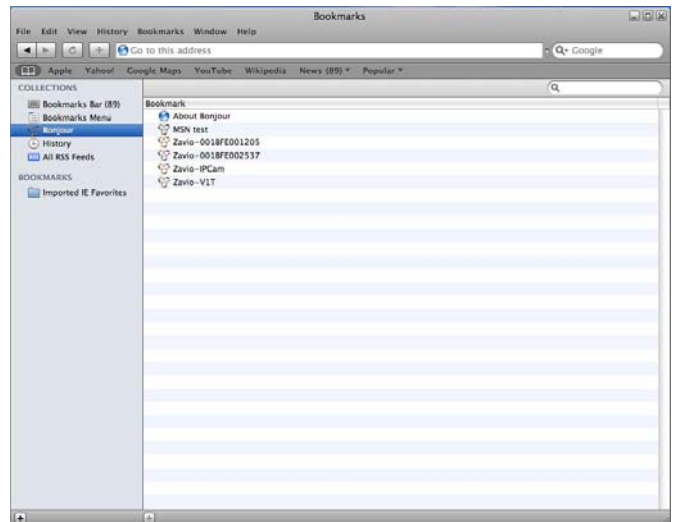


Mac OS using Safari Browser

1. Select **Safari icon**



2. Click **Bonjour function** and select the camera you wish to access.



3. Enter name and password to login to the IP camera. (**Default is admin / admin**)



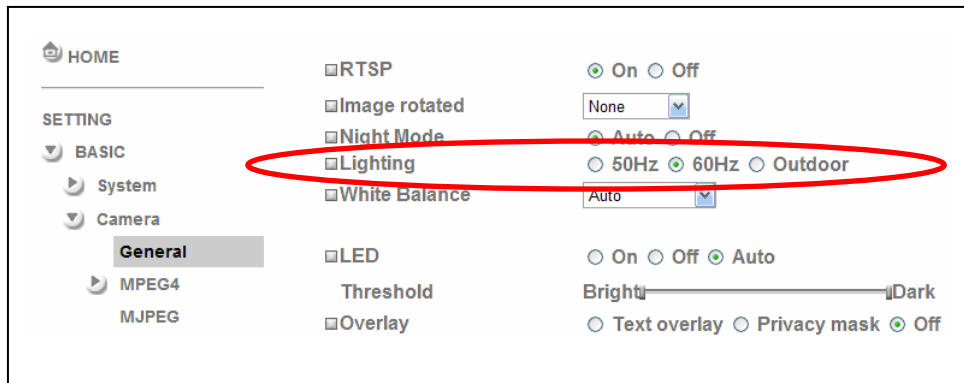
4. The monitor image will be displayed in your browser.



Lighting environment setting

The default setting of lighting environment is 60Hz. However, if the image appears flickery, this might be because the lighting environment in your country is 50 Hz. Hence, this setting can be changed into 50Hz. Or if you wish to use this IP Camera in an outdoor environment, this setting can be changed into Outdoor mode.

Go to “Setting → Basic → Camera → General”, choose the environment setting you wish.

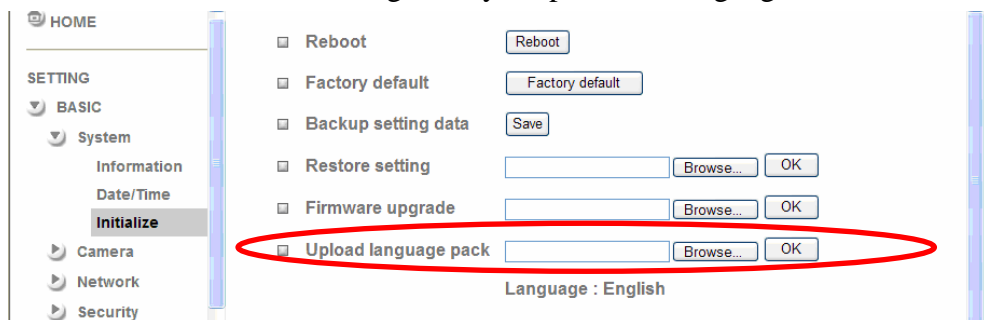


Change the Web Interface into your preferred language

Use the settings screen to set the language of the Web Interface.

Go to “Setting → Basic → System → Initialize”.

1. Insert Software CD into your CD-ROM.
2. Browse and select the preferred language from language pack in the Software CD and then click OK.
3. The web interface will change into your preferred language.



Use IP Camera via Mobile Phone

1. Using IP Camera via iPhone

Select Safari function → Enter IP address in the web link → enter username and password (**default value admin/admin**) → The Zavio user interface and Live Image will show up in the middle of the screen.

2. Mobile phone viewing

a. 3G Mobile Phone Streaming Viewing

For 3G mobile phone viewing, please type “**rtsp://<IP>:<PORT>/video.3gp**” into your 3G web media player.

<IP> is the IP address of your IP camera;

<PORT> is the RTSP port of your IP camera (Default value is 554.)

Example: rtsp://100.10.10.1:554/video.3gp

b. 2.5G Mobile Phone Viewing

b1. WAP viewing

For 2.5G WAP mobile phone viewing, type “**http://<IP>/mobile.wml**” into your 2.5G web browser.

b1. Browser viewing

For 2.5G mobile phone browser viewing, type “**http:// <IP>/mobile.htm**” into your 2.5G web browser.

Wireless Setting (F511W model)

Power the IP Camera and connect an Ethernet network cable to the IP Camera's LAN port. Using Intelligent IP Installer and entering the camera's setting page.

Please go to "Setting → Basic → System → Network → Wireless", set the wireless option to "On"

1. Click Refresh and choose the Access Point you wish to connect.
2. Enter the password within the **Active transmit key** field if required.
3. Choose DHCP to connect through a dynamic IP or assign a static IP for the wireless connection.
4. Click "OK" to apply settings. The **Wireless IP address** appears in the **IP address** field.

Note: The wireless private IP address can be found in Intelligent IP Installer.

HOME

SETTING

BASIC

System

Camera

Network

Information

PPPoE

DDNS

UPnP

IP Notification

Wireless

Messenger

Security

Advance

Status of wireless networks

ESSID	Mode	Security	Channel	Signal strength	Bit rate
> zavio	Managed	Open/WEP	11	81	18Mb/s
Mick_AP	Managed	WPA-PSK/TKIP	11	73	0
linksys	Managed	WPA-PSK/TKIP	1	75	0
funP	Managed	WPA-PSK/TKIP	2	83	0
FON_funp	Managed	Open/NoSecurity	2	83	0

Refresh

MAC address: 00:10:60:9E:8D:24

IP address: 10.0.0.82 ← **Wireless IP address**

ESSID: zavio Manual setting

Mode: Managed Ad-Hoc

Authentication: Open

Encryption: WEP

Key length: 64 bit 128 bit

Active transmit key: (10 HEX chars or 5 ASCII chars)

Key 1: [masked]

Re-type: [masked]

Obtain an IP address automatically (DHCP)

Use the following IP address

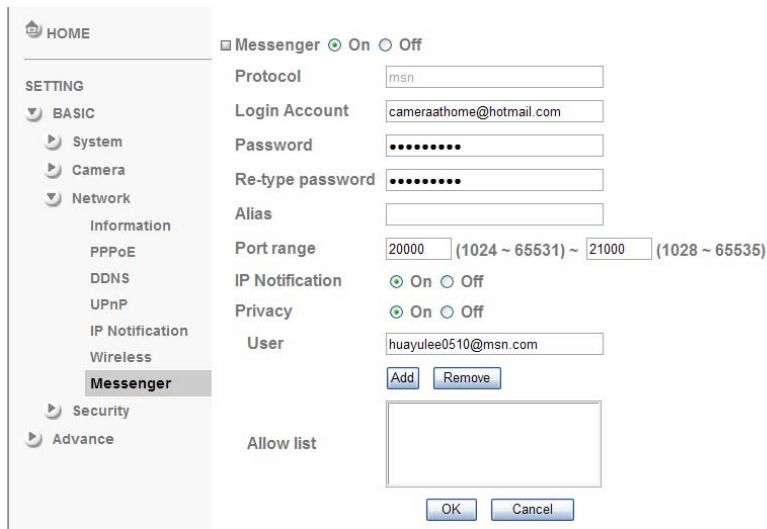
Windows Live Messenger Setting

Live video of the IP Camera can be displayed using Microsoft Live Messenger, whilst providing its public IP address to users for access via the web browser. This feature is useful especially when the IP address of the camera is dynamically assigned.

If you wish to set up MSN Messenger, enter the camera's setting page.

Go to "Setting → Basic → System → Network → Messenger", set the Messenger option "On."

1. Create a new MSN Messenger account (e.g.: **Camerathome@hotmail.com**) for the IP Camera.
2. Enter the new MSN Messenger **Login Account** and **Password** within the designated boxes.
3. Under the **IP Notification Option**, Click "On" to enable IP notification to the users.
4. Under the **Privacy Option**, Click "On" to create an allow list.
5. Use your existing account to login to MSN Messenger.
6. Add the new MSN Messenger account (e.g.: **Camerathome@hotmail.com**) to your contact list.



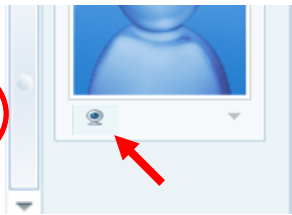
7. The IP Camera will send you a message with its Public IP and Private IP if the IP Notification Option is enabled.

8. Click on the small camera icon. Then, choose "View a new contact's webcam".

Camera at home says:

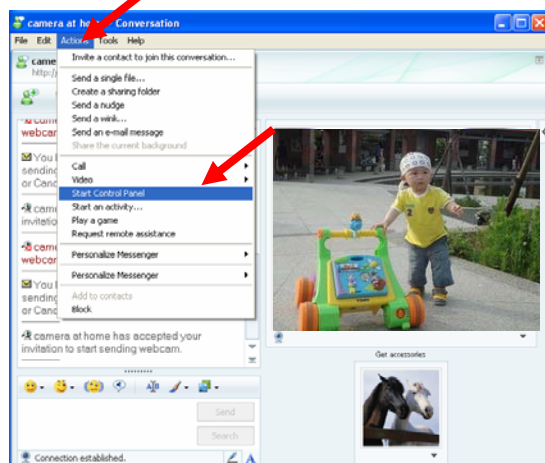
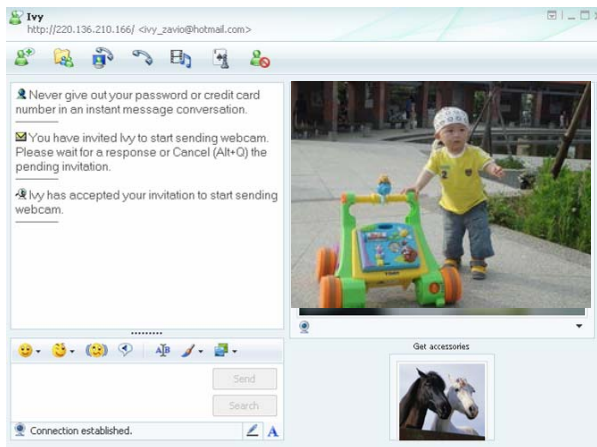
My Public IP: 122.124.4.150
 URL: <http://122.124.4.150/>

Wired-Private IP: 10.0.0.45
 URL: <http://10.0.0.45/>

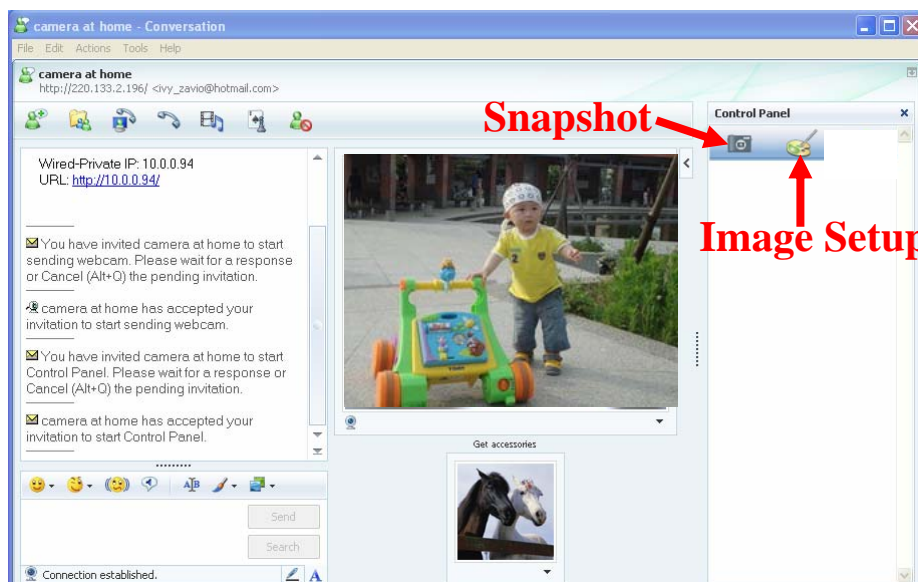


9. The IP Camera automatically accepts your invitation and its live video is displayed.

10. Click **Action** button and choose **Start control panel** to use control panel



11. You can use **Snapshot**, **Image Setup** and **PT Control** function via MSN add-in control panel.



Access to the Internet

a. Internet connectivity of the IP camera can be established by inputting the cameras IP information within the **Information** section.

(Please go to **Setting** → **Basic** → **Network**→ **Information**)

The screenshot shows the 'Information' configuration page for the IP camera. The left sidebar contains a menu with 'HOME', 'SETTING', 'BASIC', 'System', 'Camera', 'Network', 'Information' (highlighted), 'PPPoE', 'DDNS', 'UPnP', 'Bonjour', 'IP Notification', 'Wireless', 'Messenger', 'Security', and 'Advance'. The main content area includes:

- MAC address: 00:1B:FE:00:6B:E6
- Obtain an IP address automatically (DHCP)
- Use the following IP address
 - IP address: 10.0.0.60
 - Subnet mask: 255.255.255.0
 - Default gateway: 10.0.0.1
- Use the following DNS server address
 - Primary DNS server: 168.95.192.1
 - Secondary DNS server: 168.95.1.1
- HTTP port number: 80 [] (1024 to 65535)

Buttons for 'OK' and 'Cancel' are located at the bottom of the configuration area.

b. Internet Connectivity of the IP Camera can be established through PPPoE (Point-to-Point Protocol over the Ethernet) by inputting the username and password from your Internet Service Provider (ISP) within the **PPPoE** section.

(Please go to **Setting** → **Basic** → **Network**→ **PPPoE**)

Note 1: Please reboot the IP Camera, after changing the PPPoE settings.

Note 2: Please turn on the DDNS and IP Notification function when using the PPPoE function.

The screenshot shows the 'PPPoE' configuration page for the IP camera. The left sidebar is similar to the previous screenshot, but 'PPPoE' is highlighted. The main content area includes:

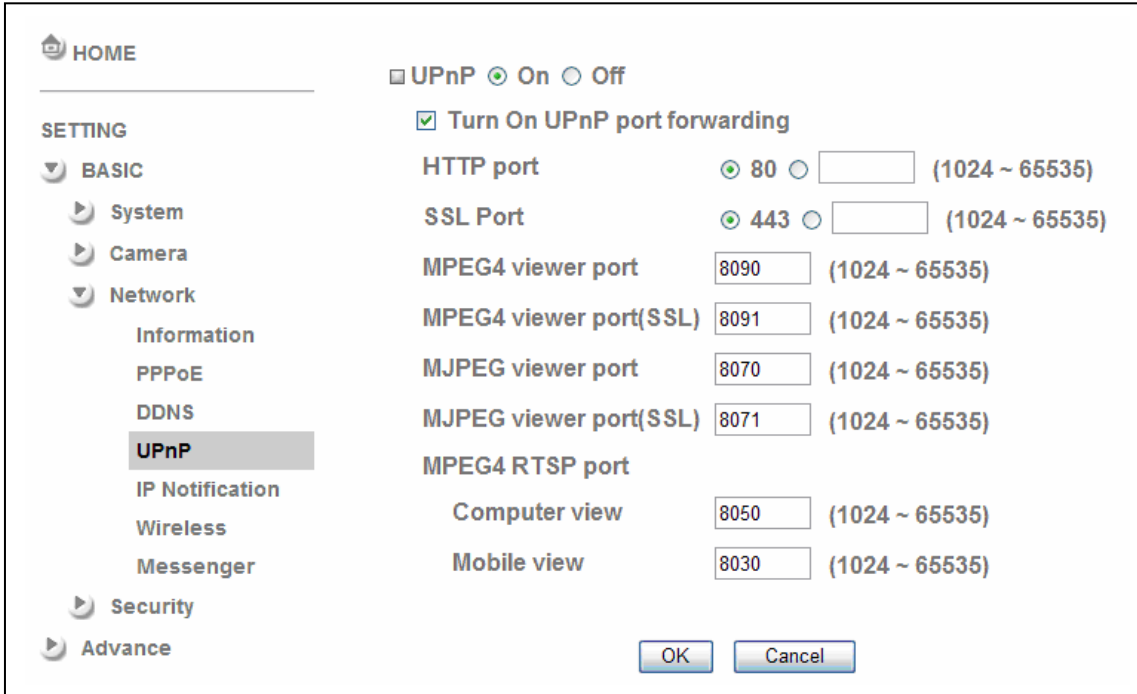
- PPPoE On Off
- IP address: 0.0.0.0
- User ID: 71959519@hinet.net
- Password: [masked]
- Re-type password: [masked]
- Obtain DNS server address automatically
- Use the following DNS server address

Buttons for 'OK' and 'Cancel' are located at the bottom of the configuration area.

c. Internet Connectivity of the IP Camera can be established if your router is UPnP (Universal Plug and Play) enabled. The IP camera is automatically detected and added to “My Network Places” on your computer. *Please note that only Home Routers manufactured after 2006 support the UPnP function.*

c1. If your router is a UPnP Internet Gateway Device (IGD), turn on the **UPnP function** within the UPnP section. (Please go **Setting** → **Basic** → **Network**→ **UPnP**)

Note: If you turn on the UPnP Port Forwarding function, RTSP (Real Time Streaming Protocol) Port information will change to the illustrated value below.



c2. If your router is not a UPnP Internet Gateway Device, please setup Port Forwarding or Port Mapping

Note 1: Home Routers manufactured before 2006 do not support UPnP IGD function.

Note 2: Enterprise Routers do not support UPnP IGD function.

