

## Internal Photos - PCBs

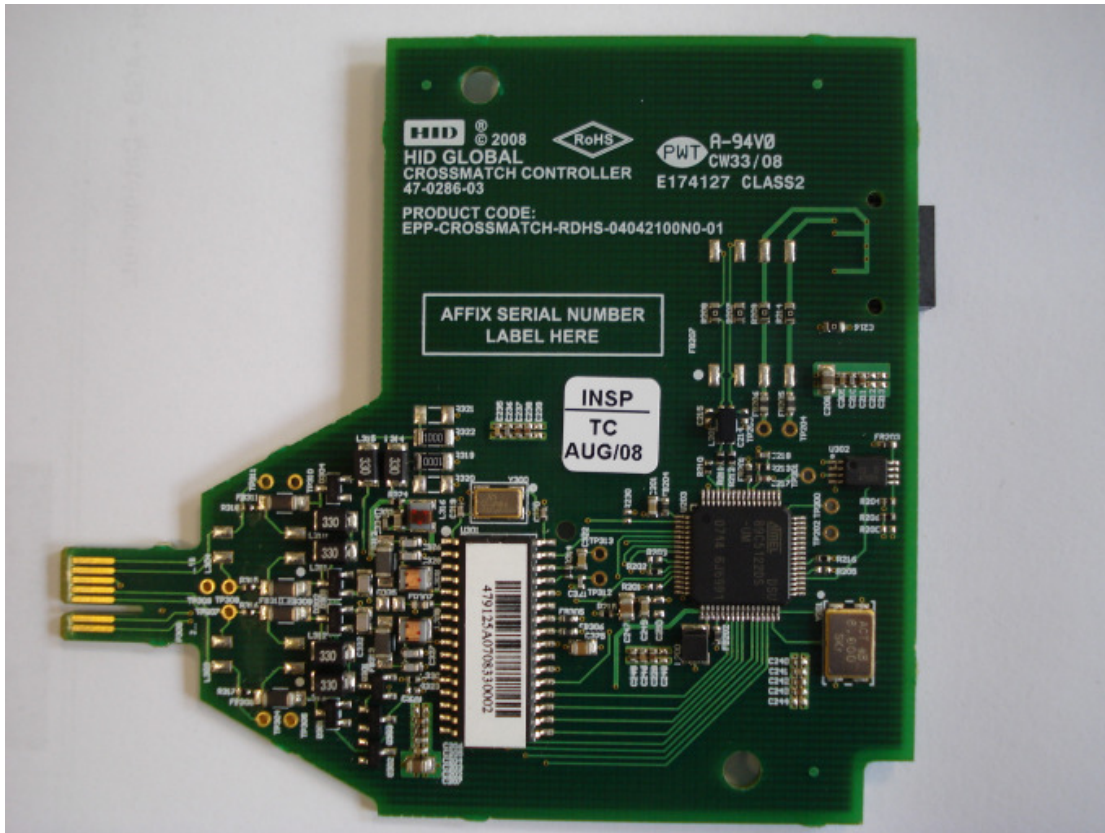


Figure 1 RFID Controller, RJ0479:388.25 RevA, Side with components

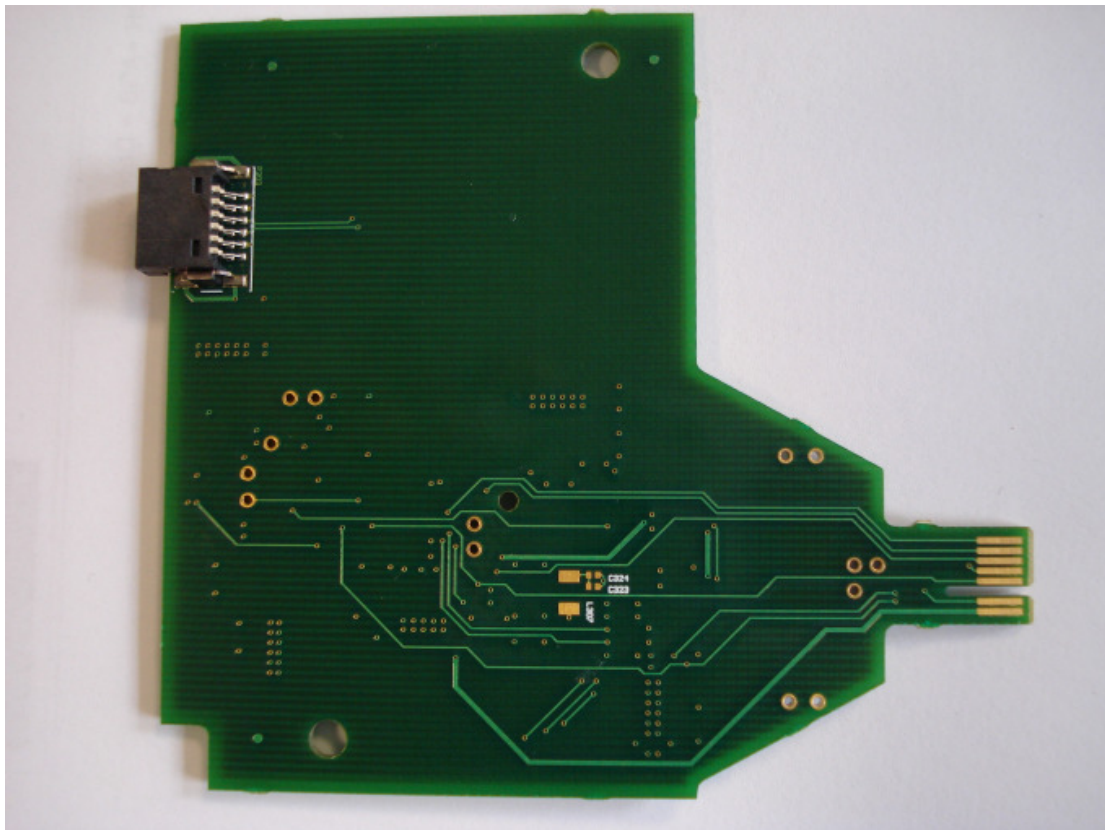
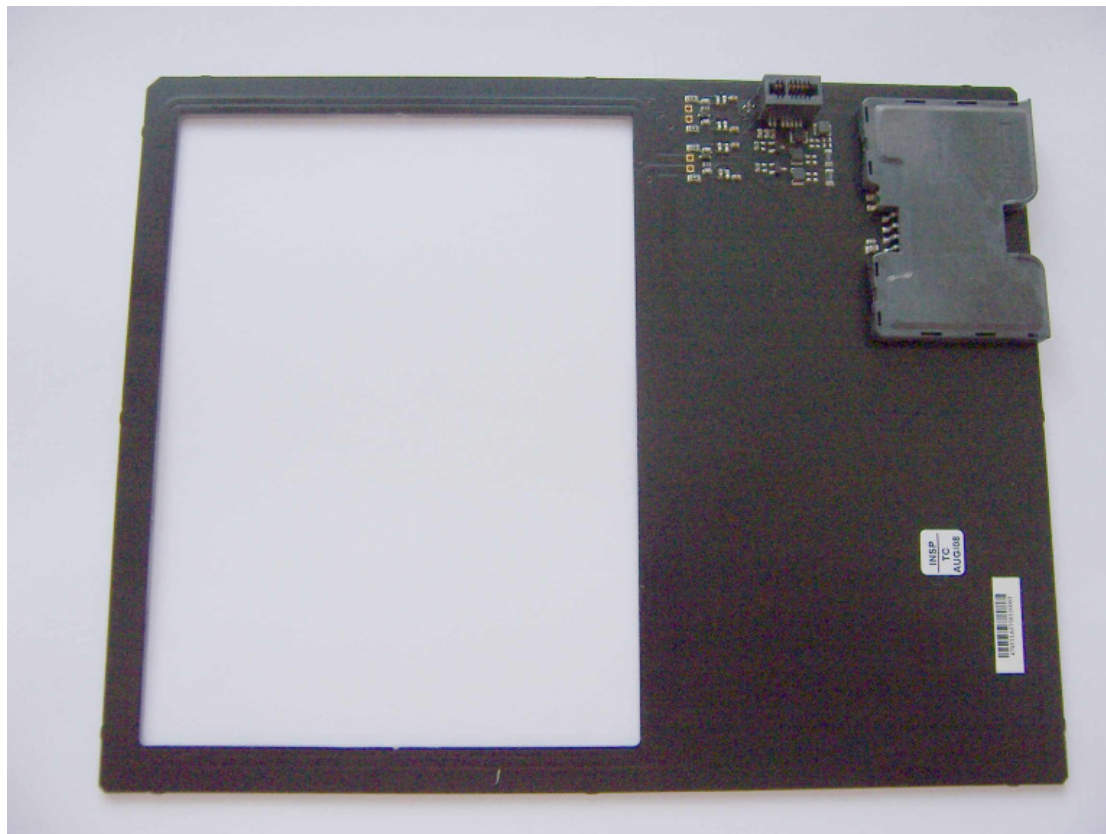


Figure 2 RFID Controller, RJ0479:388.25 RevA, Rear

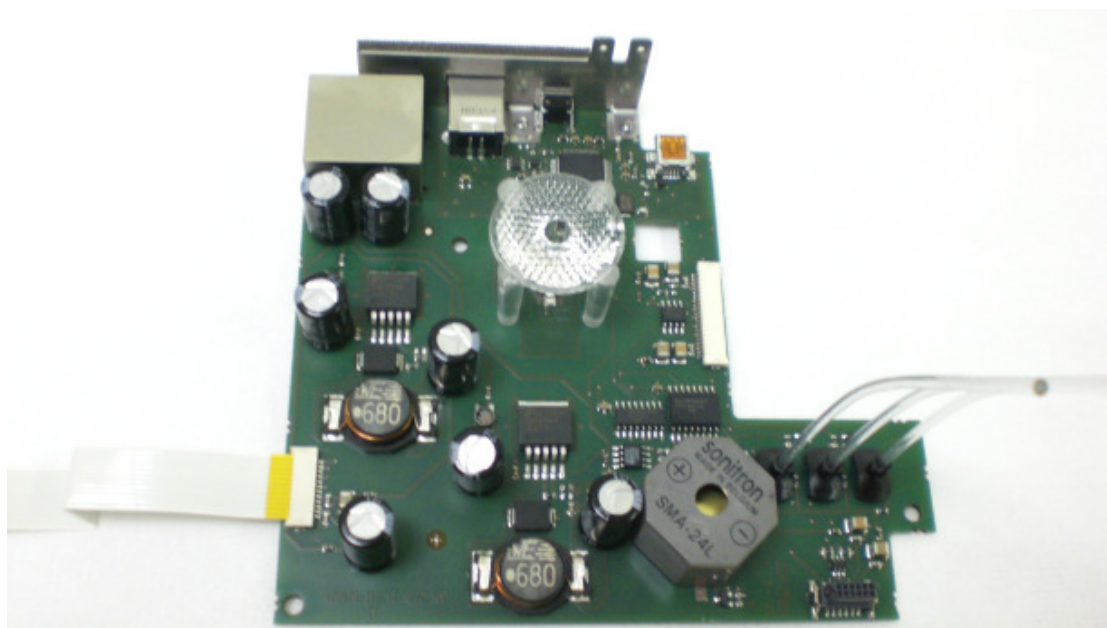


**Figure 3**      **Antenna with Card Reader, RJ0479:389.25 RevA, Side with components**

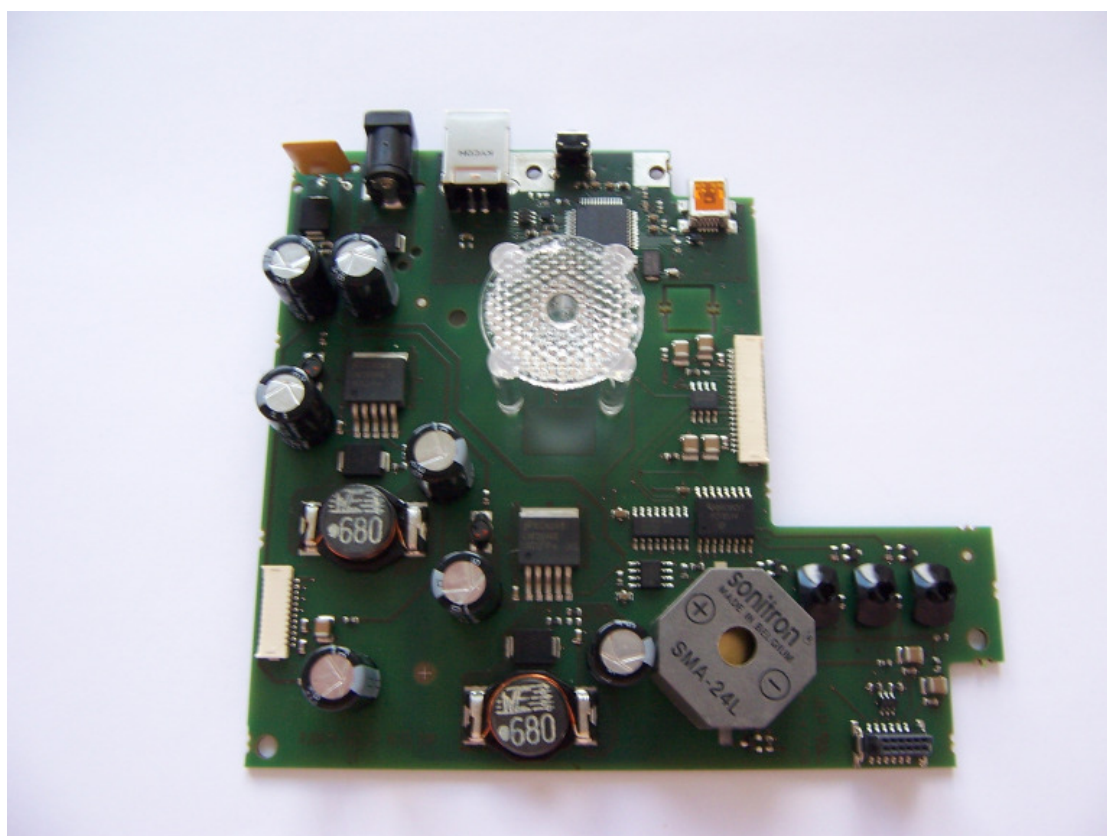


**Figure 4**      **Antenna with Card Reader, RJ0479:389.25 RevA, Rear**

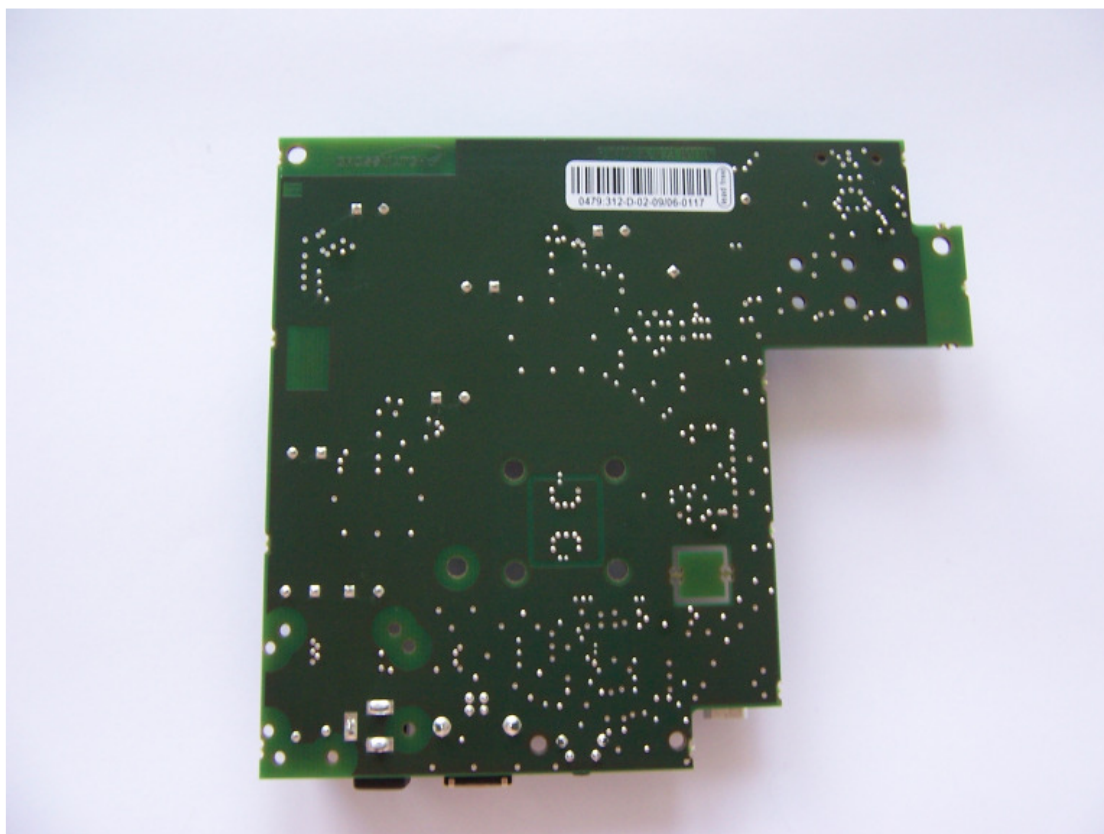




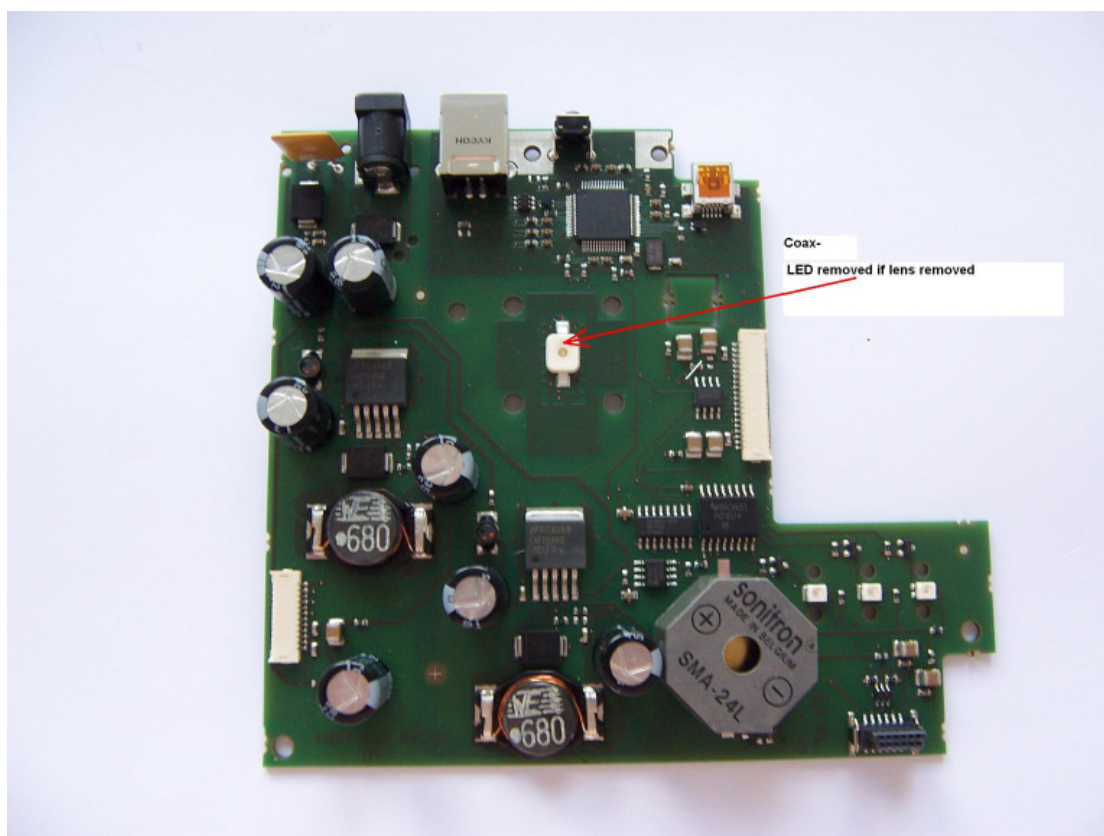
**Figure 5** Power PCB with LED and lens, RJ0479:312.25 RevD,  
Side with components and shield



**Figure 6** Power PCB with LED and lens, RJ0479:312.25 RevD,  
Side with components after removal of the shield

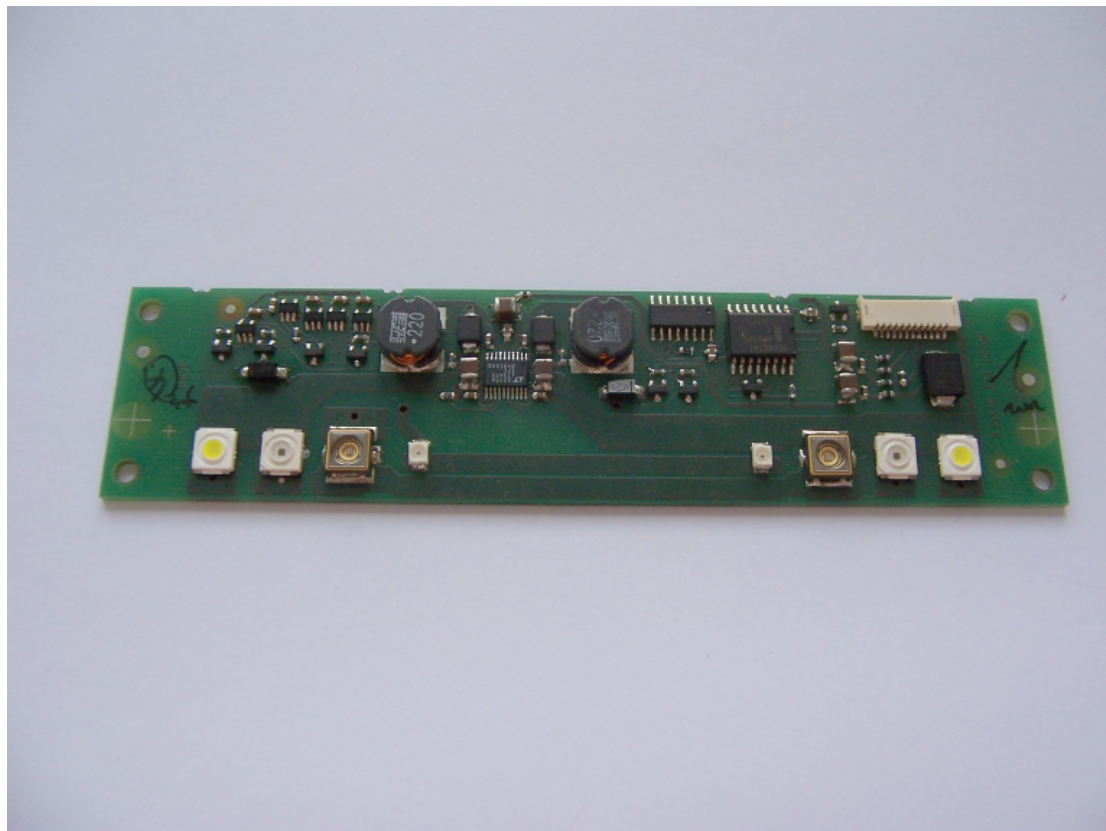


**Figure 7** Power PCB with LED and lens, RJ0479:312.25 RevD, Rear



**Figure 8** Power PCB without lens, RJ0479:312.25 RevD, Side with components





**Figure 9** Illumination PCB, RJ0479:324.25 RevE, Side with components



**Figure 10** Illumination PCB, RJ0479:324.25 RevE, Rear

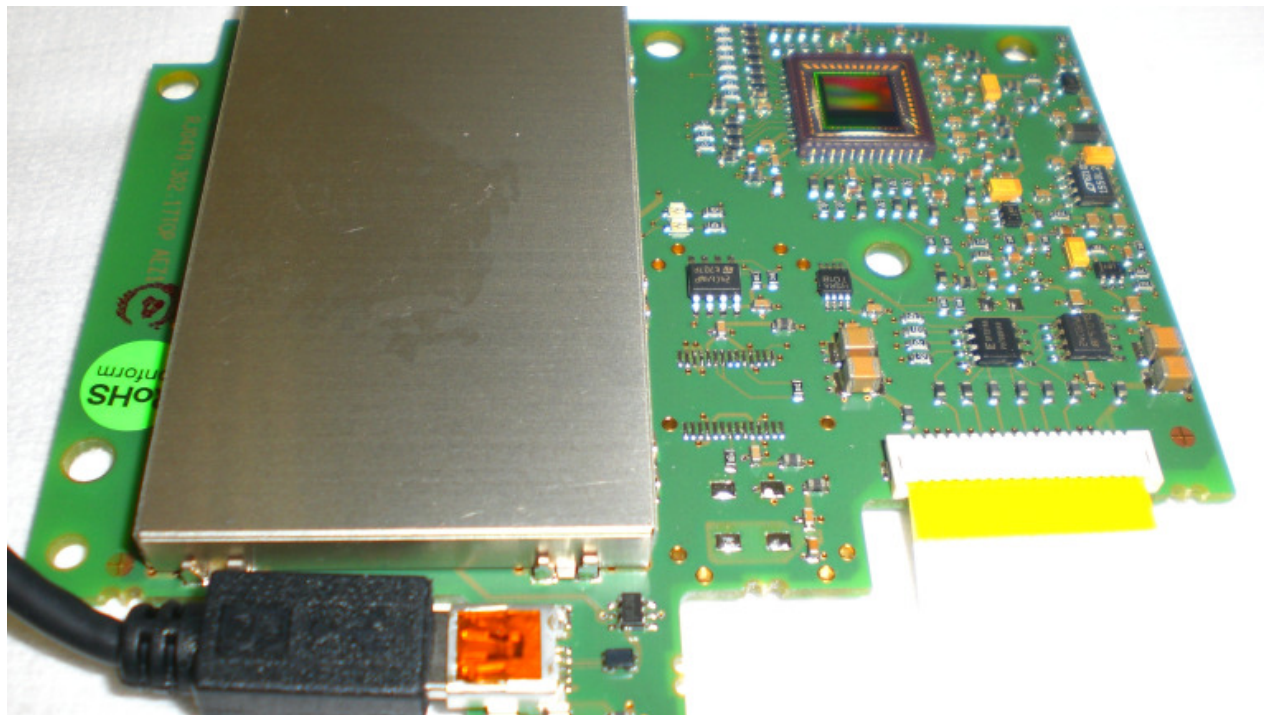


Figure 11 Base Cam RJ0479:302.25AEZ01 (with shield), Side with components

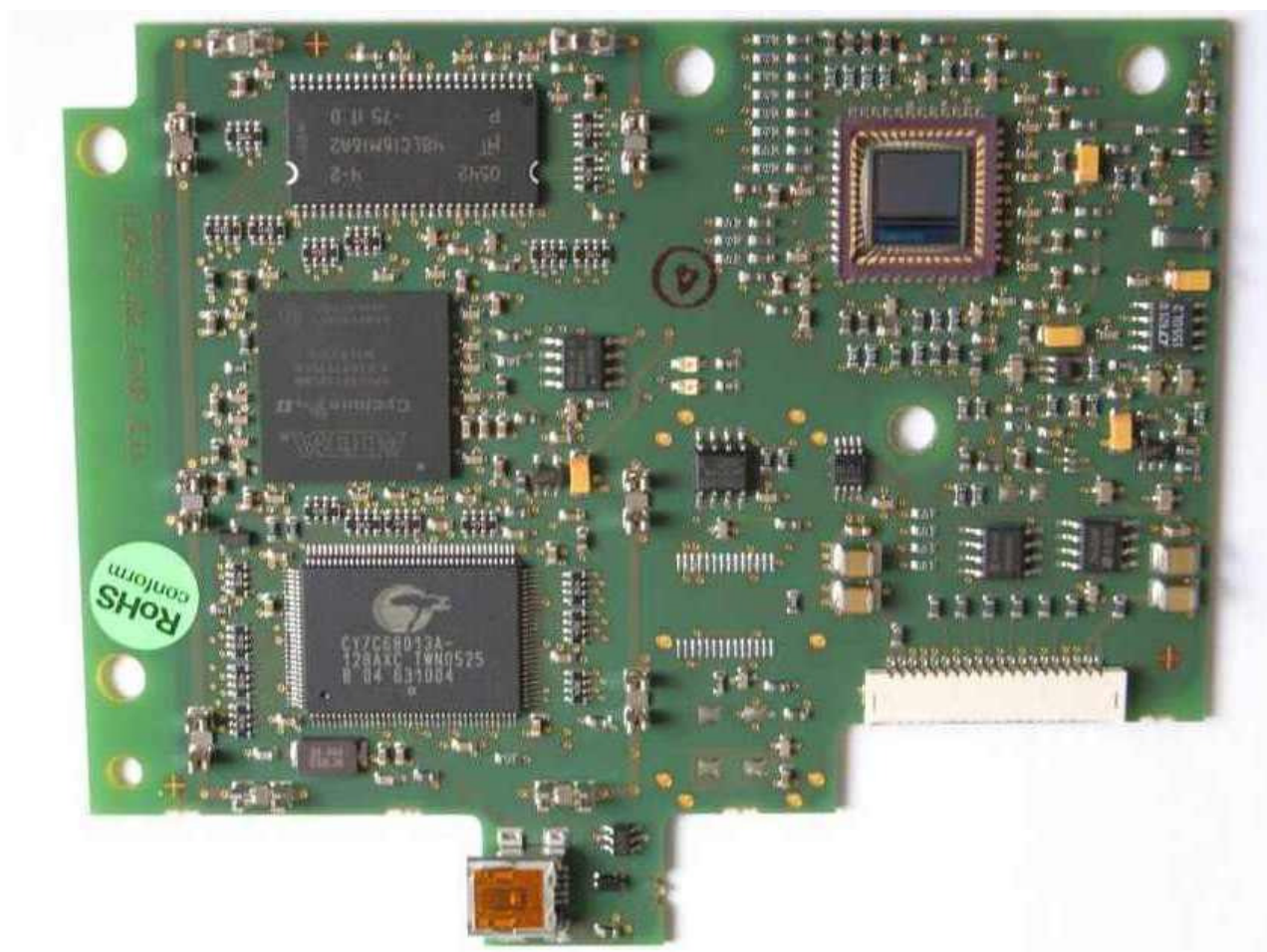
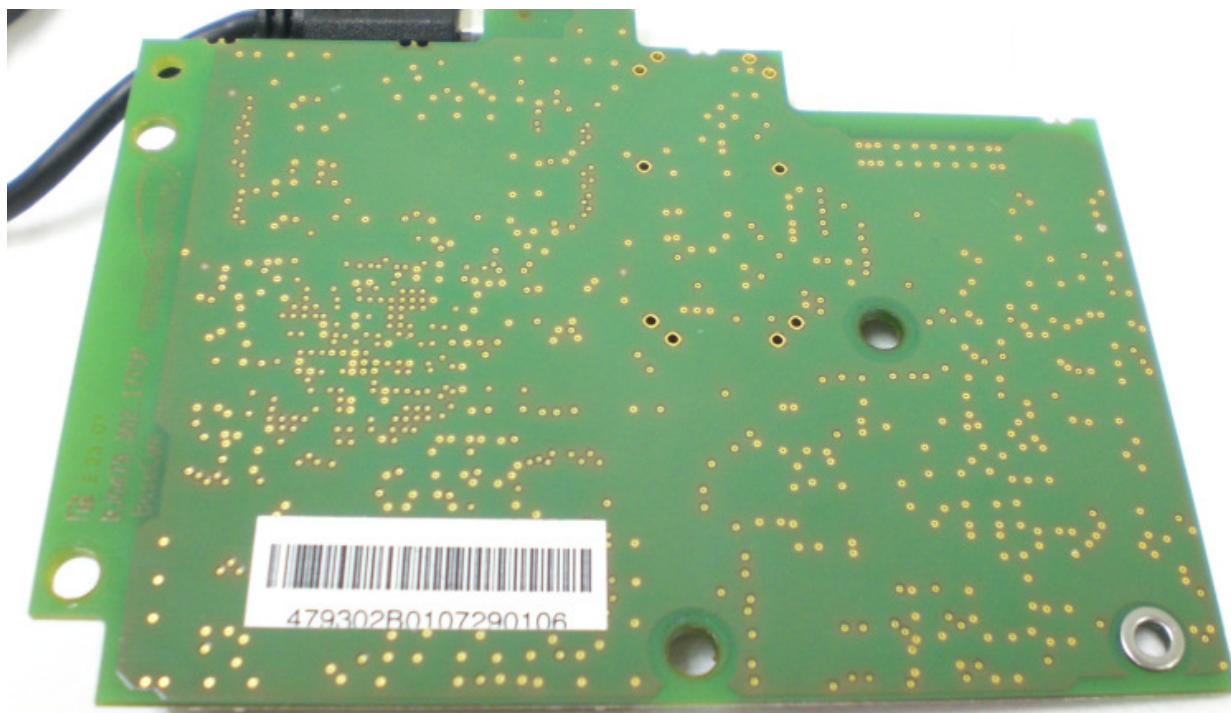


Figure 12 Base Cam RJ0479:302.25AEZ01 (without shield), Side with components





**Figure 13**      **Base Cam RJ0479:302.25AEZ01, Rear**