

Shenzhen Skyworth Digital Technology Co., LTD

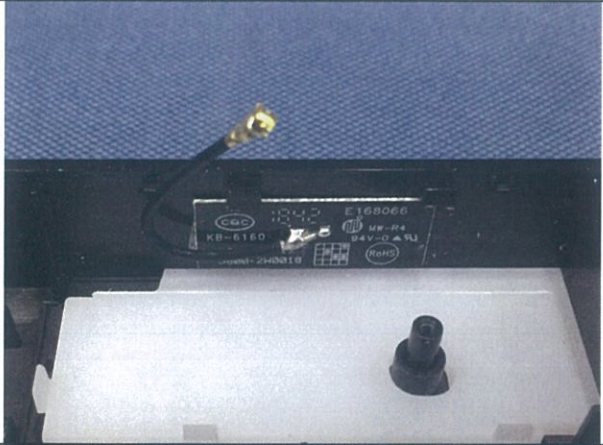
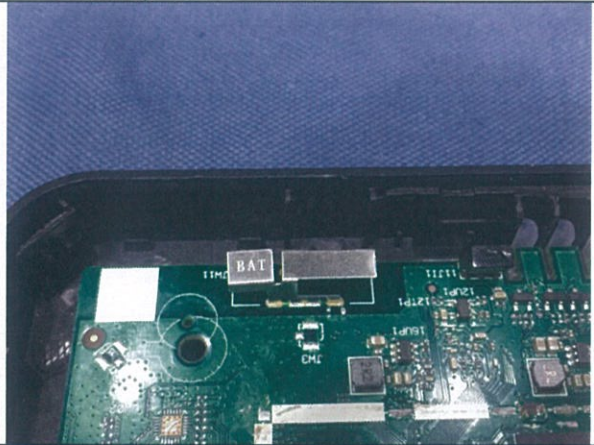

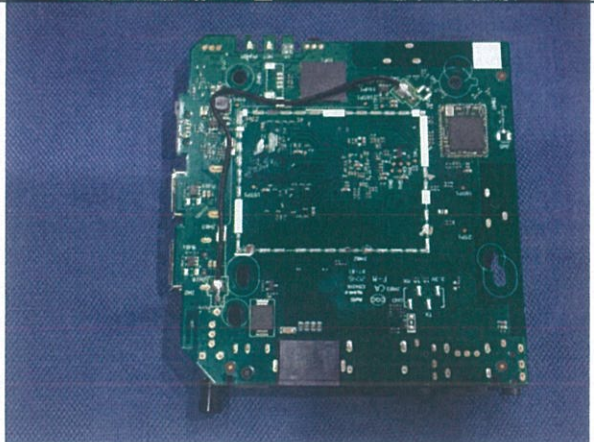
Address: Unit A14/F, Skyworth Bldg., Gaoxin Ave. 1s., Nanshan District, Shenzhen, China

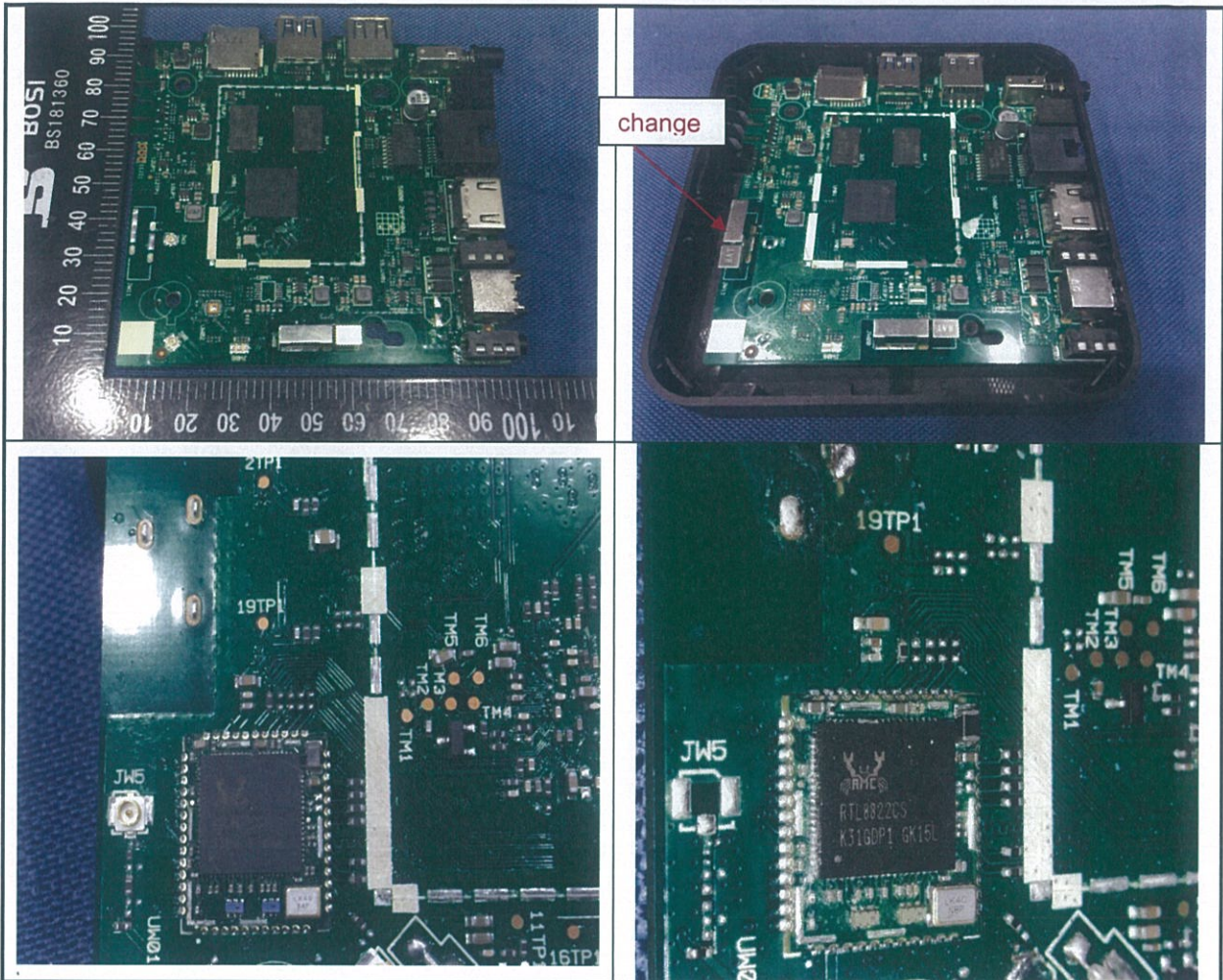
Date: June 28, 2021

Declaration of Differences in Tested Devices

We, Shenzhen Skyworth Digital Technology Co., LTD, declare on our sole responsibility for the product change of LEAP-S1, OTT-01, HP40A, HP40A3, HP4005, SRT401, THA100, THA 100, HP4035, XA400, KM2, C1 Plus, Leap-S1, for more details of change please refer to as below.

1. Product change information

Old	New
N/A	1. Replace the new antenna (The original PCB antenna is replaced by PIFA antenna, and the antenna gain remains unchanged 2.4G: 3.5 dBi 5G:3dBi).
	
	



Product Name	
Set Top Box	4K UHD Streaming Box
Models	
LEAP-S1, HP40A, HP40A3, HP4005	LEAP-S1, OTT-01, HP40A, HP40A3, HP4005, SRT401, THA100, THA 100, HP4035, XA400, KM2, C1 Plus, Leap-S1
Trade Mark	
SKYWORTH, SDT	SKYWORTH , SDT, DIRECTV, THOMSON, STRONG, Tesla, MECOOL, CoLoVu

2. Due to the change of the antenna, the power level of IEEE 802.11AC-VHT80 needs to be lowered to meet the standard requirements of 5150-5350MHz.

The original report:

Power Setting								
Mode	U-NII-1		U-NII-2A		U-NII-2C		U-NII-3	
	Chain 0	Chain 1	Chain 0	Chain 1	Chain 0	Chain 1	Chain 0	Chain 1
IEEE 802.11a	80	80	83	83	55	55	66	66
IEEE 802.11n-HT20	65	65	65	65	44	44	50	50
IEEE 802.11n-HT40	66	66	68	68	46	46	50	50
IEEE 802.11ac-VHT20	65	65	65	65	44	44	50	50
IEEE 802.11ac-VHT40	66	66	68	68	46	46	50	50
IEEE 802.11ac-VHT80	75	75	75	75	46	46	52	52

Maximum conducted output power (dBm)	SISO_Chain 0	U-NII-1	U-NII-2A	U-NII-2C	U-NII-3
	IEEE 802.11a	12.61	12.84	12.98	15.84
	SISO_Chain 1	U-NII-1	U-NII-2A	U-NII-2C	U-NII-3
	IEEE 802.11a	16.03	15.74	13.46	16.80
	MIMO_Chain 0+1	U-NII-1	U-NII-2A	U-NII-2C	U-NII-3
	IEEE 802.11n-HT20	14.68	13.56	13.57	15.87
	IEEE 802.11n-HT40	14.23	13.78	13.98	15.50
	IEEE 802.11ac-VHT20	14.44	13.49	13.58	15.60
	IEEE 802.11ac-VHT40	14.14	13.78	13.56	15.44
IEEE 802.11ac-VHT80	15.54	14.43	13.42	15.58	
Normal Test Voltage	AC 120V/60Hz				

This current report

Power Setting								
Mode	U-NII-1		U-NII-2A		U-NII-2C		U-NII-3	
	Chain 0	Chain 1	Chain 0	Chain 1	Chain 0	Chain 1	Chain 0	Chain 1
IEEE 802.11a	80	80	83	83	55	55	66	66
IEEE 802.11n-HT20	65	65	65	65	44	44	50	50
IEEE 802.11n-HT40	66	66	68	68	46	46	50	50
IEEE 802.11ac-VHT20	65	65	65	65	44	44	50	50
IEEE 802.11ac-VHT40	66	66	68	68	46	46	50	50
IEEE 802.11ac-VHT80	62	62	68	68	46	46	52	52

Maximum conducted output power (dBm)	SISO_Chain 0	U-NII-1	U-NII-2A	U-NII-2C	U-NII-3
	IEEE 802.11a	12.61	12.84	12.98	15.84
	SISO_Chain 1	U-NII-1	U-NII-2A	U-NII-2C	U-NII-3
	IEEE 802.11a	16.03	15.74	13.46	16.80
	MIMO_Chain 0+1	U-NII-1	U-NII-2A	U-NII-2C	U-NII-3
	IEEE 802.11n-HT20	14.68	13.56	13.57	15.87
	IEEE 802.11n-HT40	14.23	13.78	13.98	15.50
	IEEE 802.11ac-VHT20	14.44	13.49	13.58	15.60
	IEEE 802.11ac-VHT40	14.14	13.78	13.56	15.44
IEEE 802.11ac-VHT80	11.49	14.20	13.42	15.58	
Normal Test Voltage	AC 120V/60Hz				

Except listings above, the others are all the same.

Should you have any questions or comments regarding this matter, please have my best attention.

Sincerely yours,

wenping song

Signature

Contact Person: Wenping Song

Company: Shenzhen Skyworth Digital Technology Co., LTD

Tel: +86-0755-26945952