



深圳创维数字技术有限公司

SZ SKYWORTH DIGITAL TECHNOLOGY CO.,LTD

ENGINEERING EVALUATION REPORT

(COMPONENTS)

REPORT NO.	EDED2302224	DATE OF APPLICATION	2023-02-17
MODEL	TEN22	APPLICATION NO.	NASP2023020021-1
DESCRIPTIONS	ANTENNA WIFI 50 OHM 189mm/110mm*1.13mm IPEX1 5G/5dB White RF-link 扁体 RoHS		
SUPPLIER'S PART NO.	U00T01S069N02810		
SKYWORTH'S PART NO.	53XD-085500-A043		
MANUFACTURER	Jiangxi RF Link Electronic Co., Ltd. Address: Shangli Industrial Park, Chishan Town, Shangli County, Pingxiang City, Jiangxi Province		
SAFETY CERTIFICATION REQUIREMENTS	不需要		
ENVIRONMENTAL PROTECTION REQUIREMENTS	ROHS2.0		
REMARKS:			
COMMENTS:	IF THERE IS ANY QUALITY PROBLEM,PLEASE FOLLOW THE AGREEMENT OF BOTH		
FICTION:	APPROVAL:		
			

## Product picture



## Basic specification

Parameter attribute	Parameter name	要求值 Required value	厂家规格值 Manufacturer specification (厂家必填)
specification	Glue stick	白色 189.1mm white	189.1mm 色号 RF006W
	PCB	FR-4	FR-4
	feeder	黑色 1.13 线, 110mm black	黑色 1.13 线, 110mm black
	馈线末端 Feeder end	IPEX 1代	IPEX 1代
	配件 attachment	/	/

## PCB Gerber 图



## 产品主要技术参数

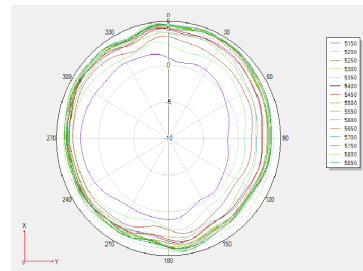
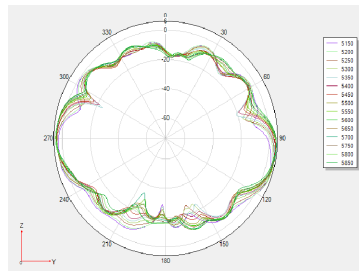
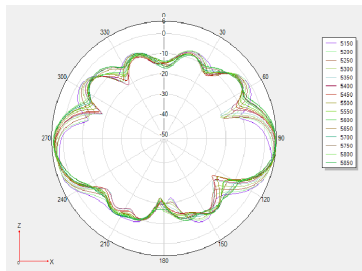
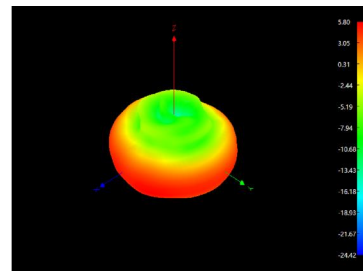
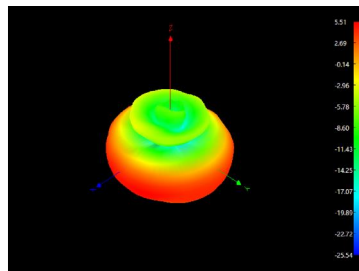
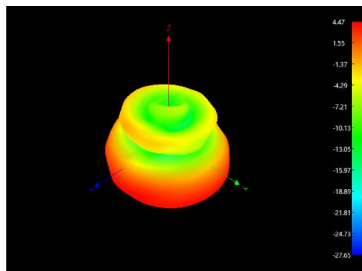
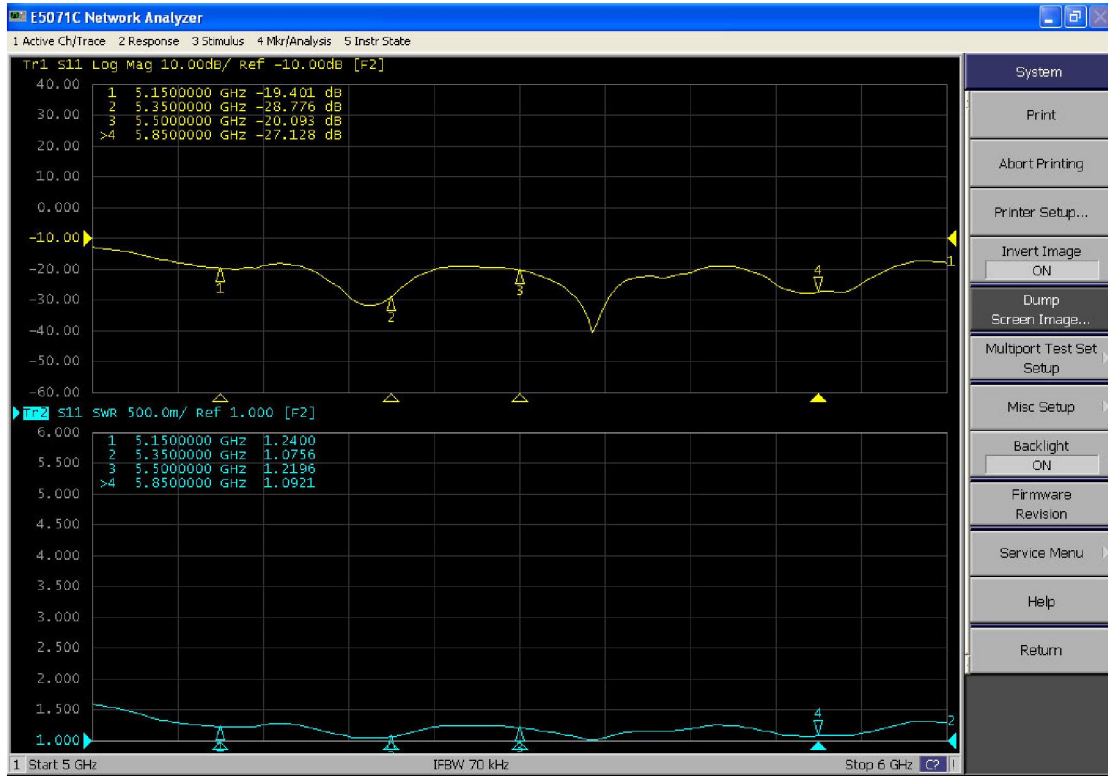
## Main technical specifications

主要技术指标		Main technical specifications	
频率范围 (MHZ)	5150-5850	Frequency Range (MHZ)	5150-5850
中心频率 特性阻抗( $\Omega$ )	$50 \pm 10$	Impedance( $\Omega$ )	$50 \pm 10$
增益(dBi)	5.91	Gain(dBi)	5.91
反射损耗	$\leq -10$	Return Loss(dB)	$\leq -10$
输出电压 驻波比	$\leq 1.92$	VSWR	$\leq 1.92$
极化方式	垂直极化	Polarization	Linear, Vertical
方向性	全向性	Radiation	Omni-directional
连接方式	端子	Connector Type	端子
物理性能		Physical Properties	
天线本体材 料	ABS	Antenna Base	ABS
工作温度	$-20^{\circ}\text{C} \sim +60^{\circ}\text{C}$	Operating Temp	$-20^{\circ}\text{C} \sim +60^{\circ}\text{C}$
保存温度	$-20^{\circ}\text{C} \sim +70^{\circ}\text{C}$	Storage Temp	$-20^{\circ}\text{C} \sim +70^{\circ}\text{C}$

Electrical property

Parameter attribute	Parameter name	Required value	Manufacturer specification value	Manufacturer's typical value
Electrical property (Key parameter)	gain	5.91dBi	5.91dBi	5.91dBi
	efficiency	$\geq 70\%$	$\geq 70\%$	$\geq 70\%$
Electrical property (Ordinary parameter)	Frequency range	2400-2500MHz	2400-2500MHz	2400-2500MHz
	Characteristic impedan	50 $\Omega$	50 $\Omega$	50 $\Omega$
	S11	$\leq -10\text{dB}$	$\leq -10\text{dB}$	$\leq -10\text{dB}$

测试报告



Frequency / MHz	Gain/ dBi	Efficiency / %
5150	4.47	74.64
5200	5.07	79.81
5250	5.09	78.52
5300	5.50	79.62
5350	5.51	79.07
5400	5.68	77.80
5450	5.57	78.34
5500	5.05	82.22
5550	5.25	83.37
5600	5.01	82.41
5650	5.89	75.51
5700	5.03	76.30
5750	5.80	75.72
5800	5.91	75.71
5850	5.73	78.19