

# Digital Camera GiftCard<sup>SM</sup>



O W N E R ' S M A N U A L

# FCC NOTE

This device complies with Part 15 of the FCC Rules. Operation is subject to the following two conditions:

- (1) this device may not cause harmful interference, and
- (2) this device must accept any interference received, including interference that may cause undesired operation.

This equipment has been tested and found to comply with the limits for a class B digital device, pursuant to part 15 of the FCC Rules. These limits are designed to provide reasonable protection against harmful interference in a residential installation. This equipment generates, uses and can radiate radio frequency energy and, if not installed and used in accordance with the instructions, may cause harmful interference to radio communications. However, there is no guarantee that interference will not occur in a particular installation. If this equipment does cause harmful interference to radio or television reception, which can be determined by turning the equipment off and on, the user is encouraged to try to correct the interference by one or more of the following measures:

- Reorient or relocate the receiving antenna.
- Increase the separation between the equipment and receiver.
- Connect the equipment into an outlet on a circuit different from that to which the receiver is connected.
- Consult the dealer or an experienced radio/TV technician for help.

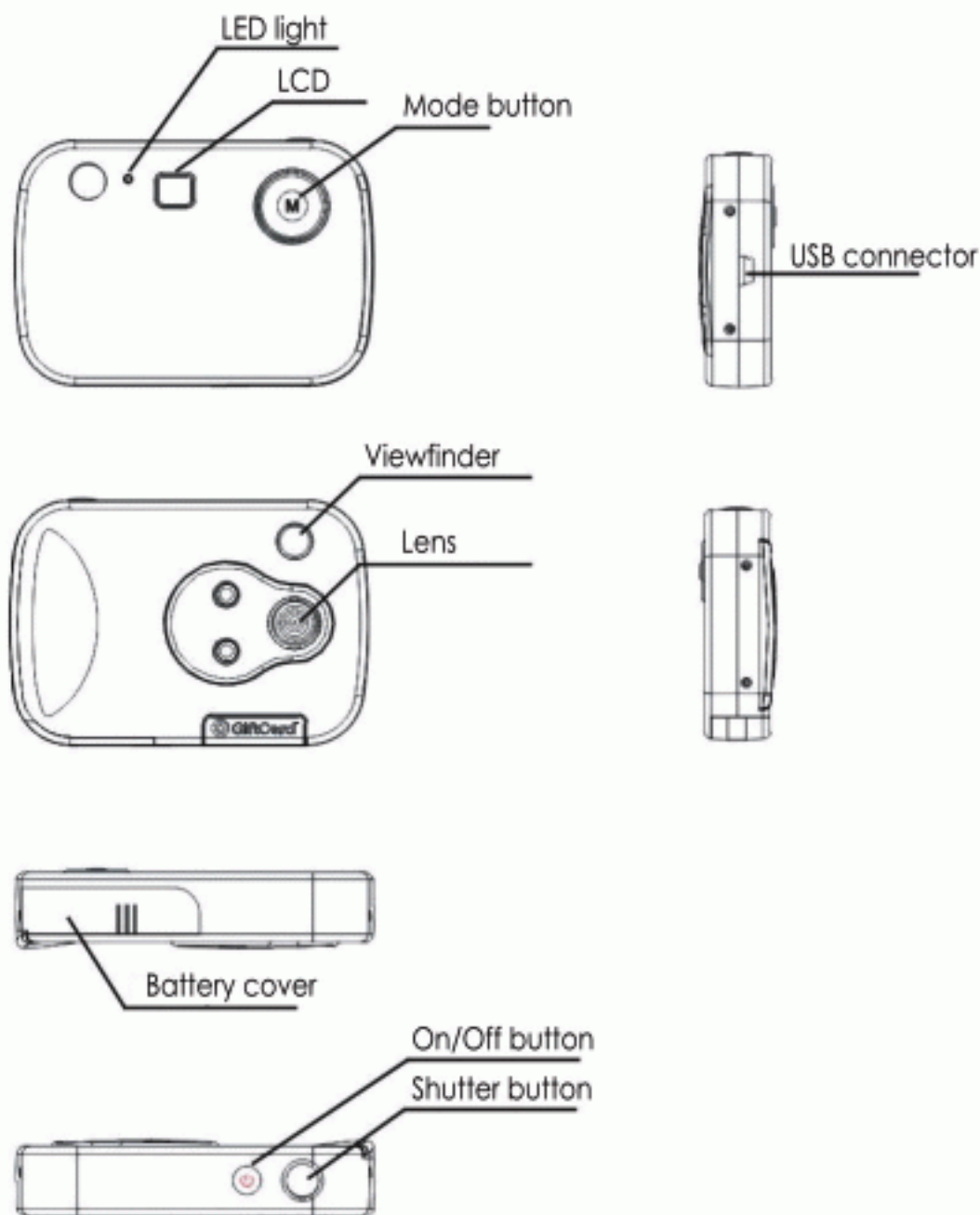
This equipment complies with FCC radiation exposure limits set forth for an uncontrolled environment

## FCC Caution:

The manufacturer is not responsible for and radio or TV interference caused by unauthorized modifications to this equipment. Such modifications could void the user's authority to operate the equipment.

# INTRODUCTION

## Getting to know your Digital Camera GiftCard<sup>SM</sup>





# GETTING STARTED

## INSTALLING BATTERIES

This camera requires two AAA alkaline batteries (not included). The battery compartment is located at the bottom of the camera.

- Slide the battery compartment door open.
- Place batteries inside, observing correct polarity.
- Slide the battery compartment door closed.

**Note:** Be sure to always download your images to the computer before removing or replacing batteries, as stored images will be permanently lost. If the camera is connected to the computer via the USB cable, the camera can run on power provided by the computer. Please do not open the battery compartment or remove the batteries until photos have been downloaded. If the camera will not be used for a long period of time, please remember to download your pictures and remove the batteries.

## CAUTION:

**Do not mix old and new batteries.**

**Do not expose batteries to flame or fire.**

**Please dispose of batteries safely.**

## ENERGY SAVER

If the camera is not used for 30 seconds, it will automatically enter energy saving mode. Press the On/Off button to restart the camera.

# TAKING PICTURES

## TO TAKE PICTURES WITH THE CAMERA:

To turn the camera on, press the On/Off button on top of the camera. The LCD screen will display the number of pictures in memory.

Use the viewfinder to locate the subject of your picture.

Holding the camera steady, press the shutter button to take a photo. The camera will beep and the red LED will flash to indicate a picture has been taken.

The counter on the LCD display will increase by one each time you take a picture. When the camera memory is full, the camera will give a continuous beep and the LCD display will read **FL**. Note: You will also hear a continuous beep if a picture failed to take.

## TO TURN THE CAMERA OFF:

Press and hold the On/Off button until the display turns off

- OR -

Press the "Mode" button until the LCD display reads **OF** and press the shutter button to confirm this selection.

# CAMERA FUNCTIONS

## SELF-TIMER MODE:

Press the "Mode" button until the LCD display reads 

Press the shutter button to confirm and start the timer. A beep will be given off every second for 10 seconds, with a longer beep at the end to indicate the picture has been taken.

## VIDEO MODE:

Press the "Mode" button until the LCD display reads 

Press and hold down the shutter button to start and continue shooting.

Release the shutter button to end shooting.

## 3-PHOTO CONTINUOUS SHOOT MODE:

Press the "Mode" button until the LCD display reads 

Press the shutter button to take 3 consecutive shots.

## DELETE ALL MODE:

Press the "Mode" button until the LCD display reads 

Press the shutter button once to confirm.  will begin to flash. Press the shutter button again to delete all pictures.

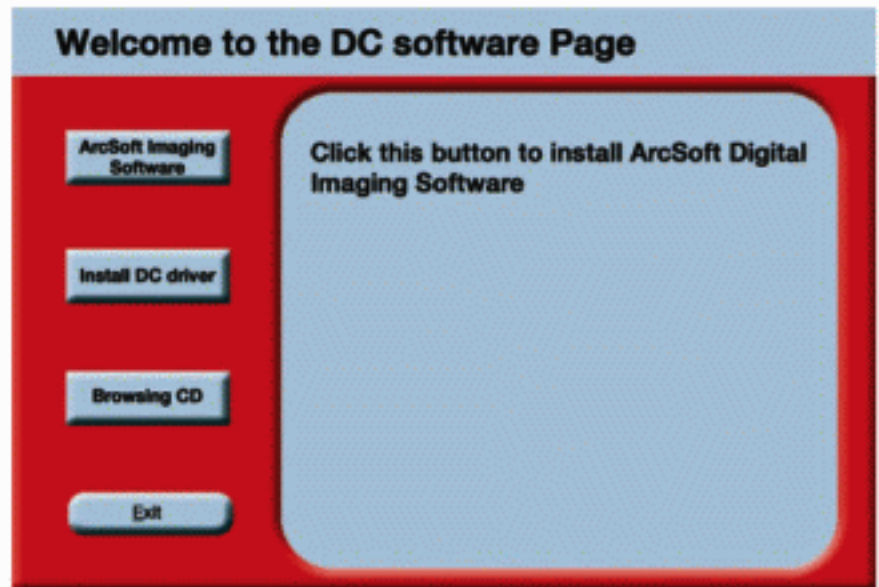
# DOWNLOADING PHOTOS

In order to download images from the camera into your computer, you must install the driver from the CD onto your computer.

## INSTALLING SOFTWARE

Insert the CD in your CD-ROM drive. The following menu will appear.

1) Click on the "Install DC driver" button to install the software. Your computer's installation program should automatically run to install the program. Once the installation is complete, there should be an additional folder on your desktop called "MyDSC2".



If your computer's installation program does not automatically run, go to My Computer and double click on your CD-ROM drive, usually D:\. You should see the following folders:

Double click the "autorun" folder to continue.

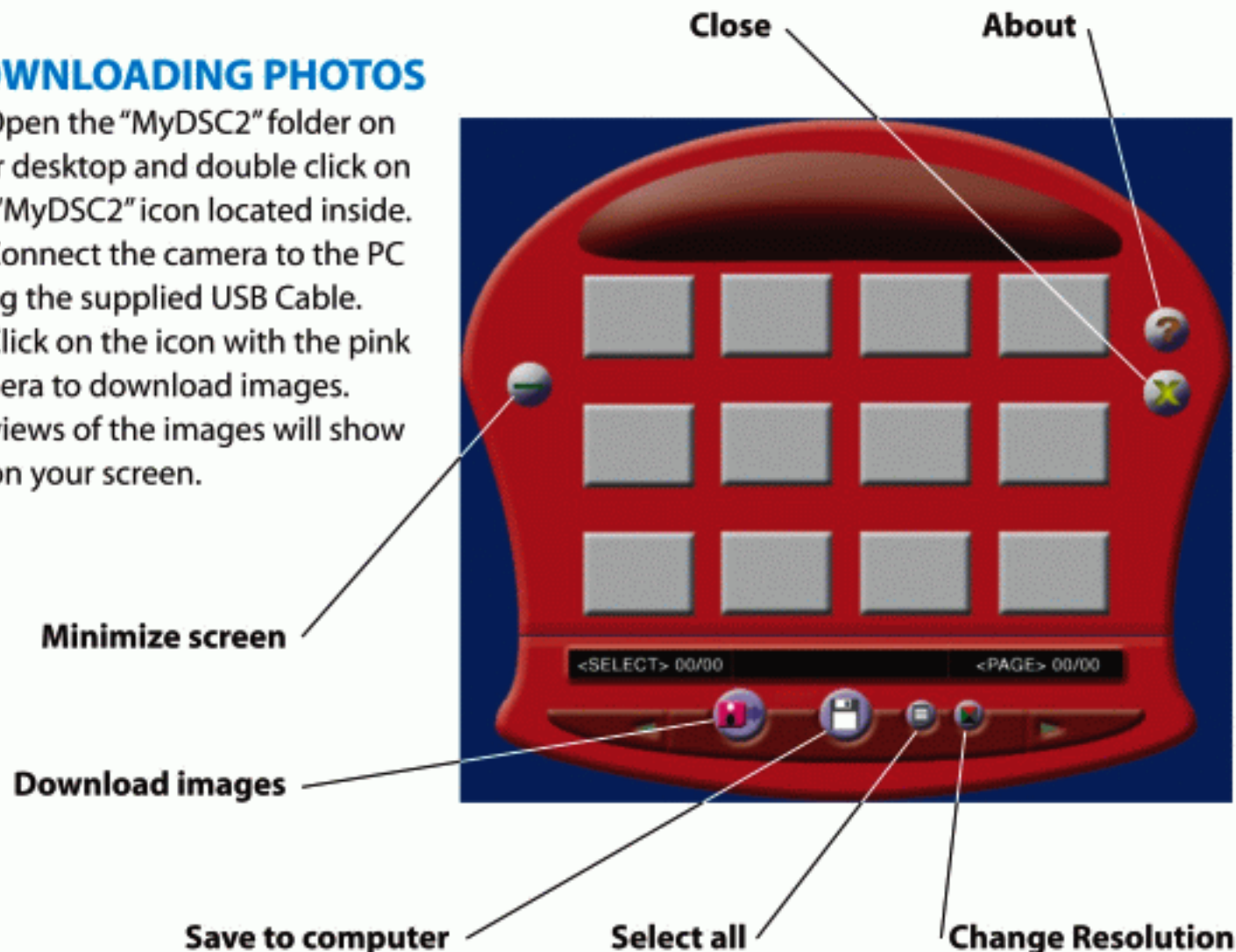


# DOWNLOADING PHOTOS

2) If you would also like to install basic photo editing software, click on the "ArcSoft Imaging Software" button. You can install PhotoImpression and/or VideoImpression based on your needs.

## DOWNLOADING PHOTOS

- 1) Open the "MyDSC2" folder on your desktop and double click on the "MyDSC2" icon located inside.
- 2) Connect the camera to the PC using the supplied USB Cable.
- 3) Click on the icon with the pink camera to download images. Previews of the images will show up on your screen.





# DOWNLOADING PHOTOS

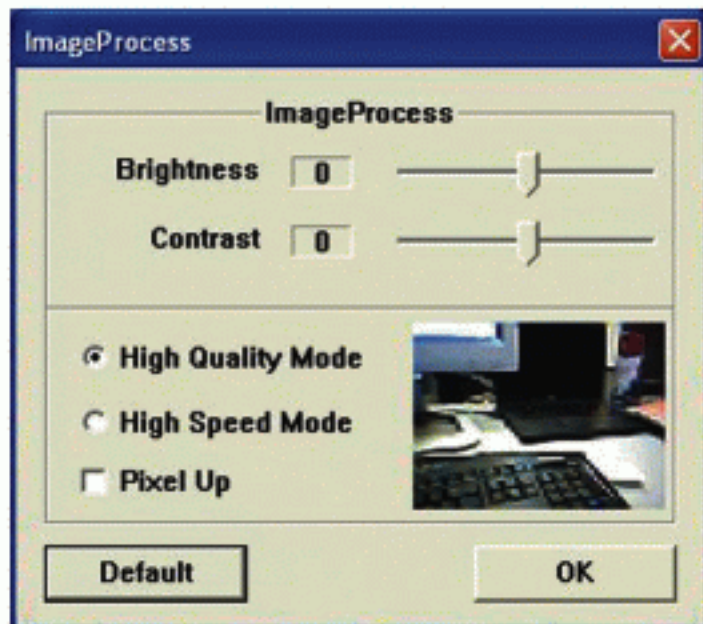
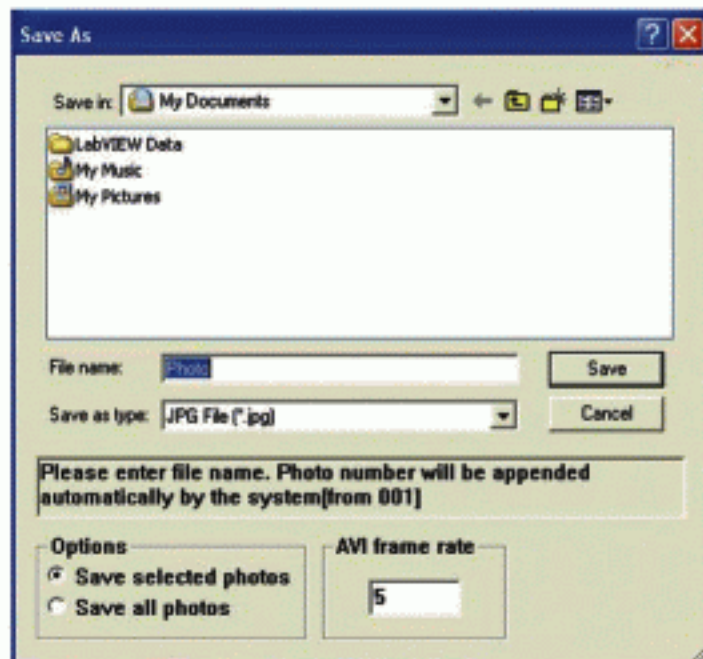
## SAVING IMAGES

Click on the icon with the disk to save images to a specific location on your computer. Be sure to choose the directory and folder you would like to save the images to.

*Note: You have the option of saving selected photos or all photos.*

## SELECT ALL

Click on this icon to select all available images.



## IMAGE RESOLUTION

The image resolution on the saved images can be enhanced from 640 x 480 pixels to 1280 x 960 pixels. To enhance the resolution of your saved images, click on the "Enhance Resolution" button. The following window will appear. Click on "Pixel Up" to enhance. Press OK when complete and then download images.