

Warning:

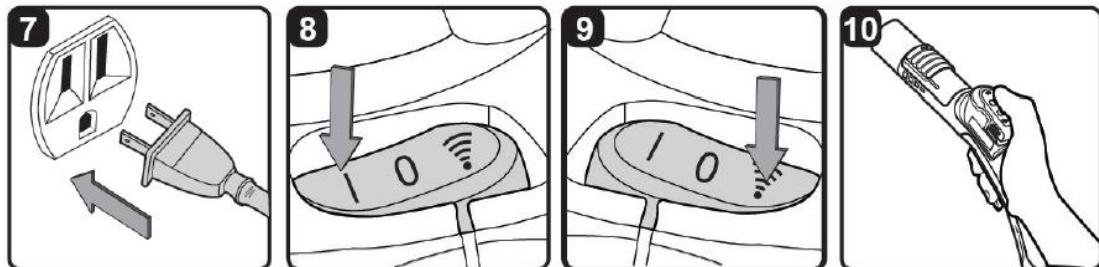
This device complies with Part 15 of the FCC Rules. Operation is subject to the following two conditions: (1) this device may not cause harmful interference, and (2) this device must accept any interference received, including interference that may cause undesired operation.


Changes or modifications not expressly approved by the party responsible for compliance could void the user's authority to operate the equipment.

This equipment has been tested and found to comply with the limits for a Class B digital device, pursuant to part 15 of the FCC Rules. These limits are designed to provide reasonable protection against harmful interference in a residential installation. This equipment generates uses and can radiate radio frequency energy and, if not installed and used in accordance with the instructions, may cause harmful interference to radio communications. However, there is no guarantee that interference will not occur in a particular installation. If this equipment does cause harmful interference to radio or television reception, which can be determined by turning the equipment off and on, the user is encouraged to try to correct the interference by one or more of the following measures:

- Reorient or relocate the receiving antenna.
- Increase the separation between the equipment and receiver.
- Connect the equipment into an outlet on a circuit different from that to which the receiver is connected.
- Consult the dealer or an experienced radio/TV technician for help.

Operation:

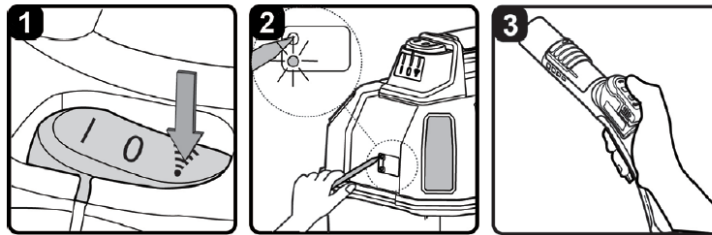



Turn the motor on by flipping the switch to the 'I' ON position. (fig. 7) For remote control use, set the power switch to remote control position "  " and turn the vacuum on by pressing the 'I' ON button on the remote control. (fig. 8 & fig. 9)

Once you have completed vacuuming, flip the switch to the 'O' OFF position or press the 'O' OFF button on the remote control for at least one second.

O = OFF      I = ON       = Remote Control

# RESETTING THE REMOTE CONTROL



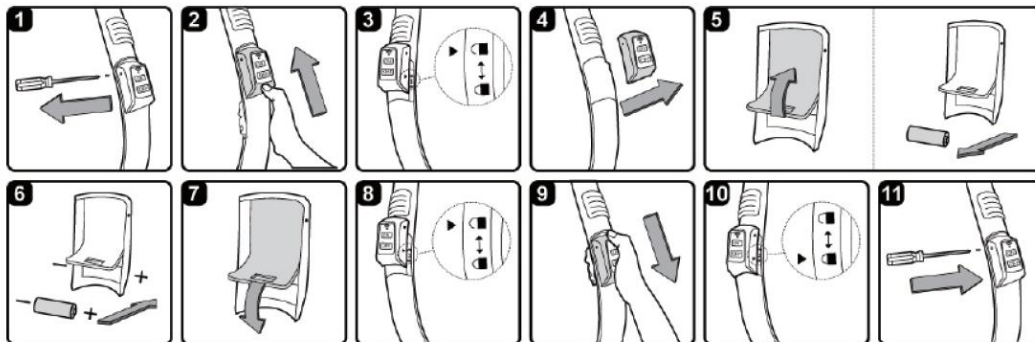
Have the remote control accessible. Set the power switch on the vacuum to the remote control position “”. (fig. 1)




Press the RESET button on the side of the power head with pointed object such as paper clip or a pen tip until the indicator lights up. (fig. 2)

Release the RESET button once the red indicator light lights up and immediately press and hold the “ON” button on the remote control handle until the vacuum powers on. (fig. 3)

If the “ON” button is not pressed and held within a 15 second window, the reset will not be successful. Repeat steps 2-3 to reset the remote control.

## Changing The Battery – Replace Only With A 23AE 12V Alkaline Battery



1. Using a Phillips screwdriver, remove the screws on the remote control. (fig. 1)
2. Slide back the remote cover so that the white triangle on the remote cover points to the unlock symbol “”. (fig. 2 & 3)
3. Remove the remote cover from the handle. (fig. 4)
4. Lift the foam cover to expose the battery and remove the old battery. (fig. 5)
5. Insert the new battery with the terminals in the direction shown and make sure to replace the foam cover. (fig. 6 & 7)
6. Replace the remote control by aligning the white triangle on the side cover to the unlock symbol “” on the handle. (fig. 8)
7. Slide the remote cover so that the white triangle is over the locked symbol “”. (fig. 9 & 10)
8. Secure the cover with the screws. Do not over tighten. (fig. 11)