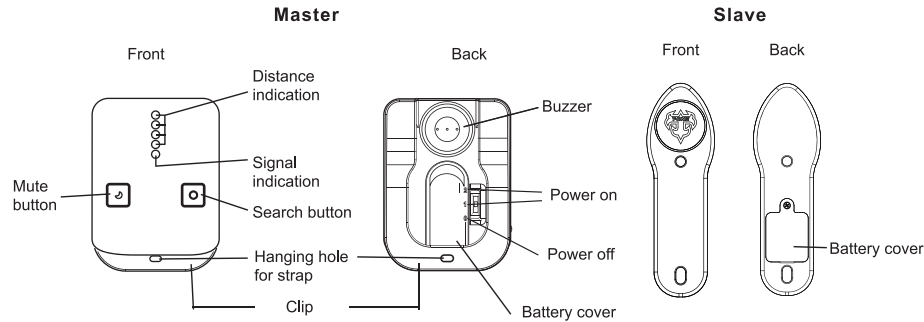


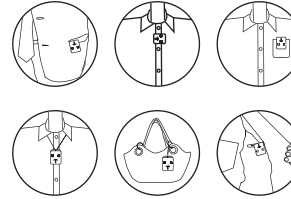
Undercover User Manual

Front & Rear View

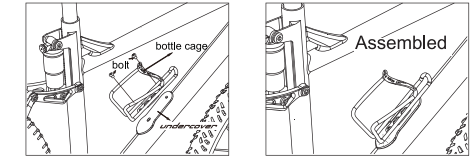


Suggested Setting place

Master

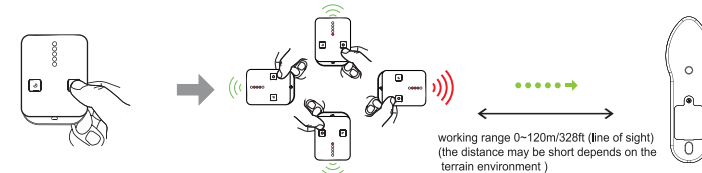


Slave



Search

For searching the Slave unit, please press the "Search button" on the Master unit once. If the distance between the Master and the Slave is closer, more LED lights are lit and the melody from the Master becomes more rapid. Contrarily, if the distance between the Master and the Slave is farther, less LED lights are lit and the melody from the Master becomes slower. Use the LED and the melody indication as guides to find the Slave unit.



- Important:**
- While searching, always place the Master in front of your body and turn to different directions to compare the signal. If you point at the right direction, the Master shows more LED lights and plays the melody more rapidly.
 - If the distance between the Master and the Slave is out of detectable working range and you turn to the wrong direction making the distance farther, the Master plays the melody and beeps every second to remind you to go back to the right direction and detectable distance ASAP.
 - If you want to stop the search mode, press the "Search button" on the Master unit once.
 - While searching, the Slave makes low beep sounds every second. This can assist you in finding its position by tracking the sound when the Master and the Slave are already close. (Suggestion: Press and hold the LED light button on the Master to turn off the melody temporarily. Once you release the LED light button, the searching melody resumes again.)

Specifications

Model Name	undercover	
Function	Search, Alarm	
Search Range	0~120m/328ft	
Alarm Distance	Prolonged Vibration of 3 second	
Master/Slave	Master x1	Slave x1
Battery Type	LR44x2	CR2032x1
Battery Life Time with Standby	50 days	60~90 days(24 hours)
Battery Life Time with Sleep	Over 90 days	Over 90 days
Beep Sound (at 10cm/3.9inch)	95 db	102 db
Bulid-in	None	None
Dimension (L/W/H)	52.8x39x13.2mm 2x1.6x0.52inch	38x120x6.2mm 1.5x4.72x0.24inch

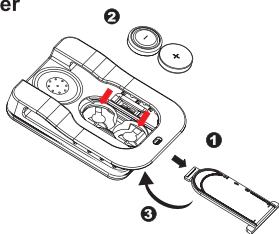
Package Contents

Model Name	undercover
Master	1 set
Slave	1 set
Batteries	LR44x4 CR2032x2
User manual	✓
strap	✓

Getting Started

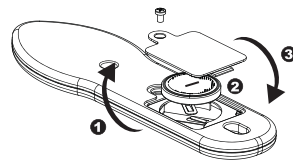
1. For first time use, please insert the batteries into the Master and the Slave sets according to the battery installation as follows.

-Master



- Slide out the battery cover.
- Insert the batteries. Make sure that the polarity +/- of the battery follow the markings on the bottom of the battery compartment.

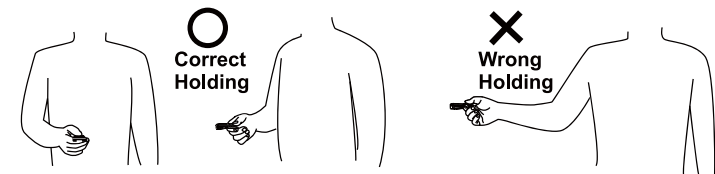
- Slave



- Place the battery cover back.

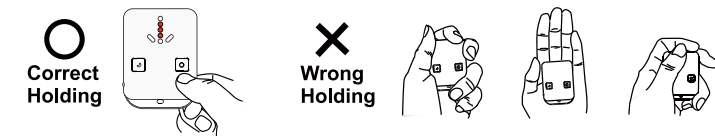
- Switch the power button of the Master and the Slave to "ON".
- Place the Slave on valuable items that you want to locate, such as car, bicycle and others. Take the Master with you or clip it on your belt clip.

During Search



*** Do not sway Master. Master is always in front the body when take a turn.

Holding Way



*** Do not cover the top side of Master.

Alarm

While someone is trying to move your bike, the Bike Guard will alert you in 3 seconds. The Master unit alarms.

Mute

Press the Mute button to mute searching melody from the Master unit. Listen to beep sound from the Slave unit to assist short range searching.

Sleeping

Switch the power button of the Master unit to OFF. When search function is not needed. Once you need this kit to resume the standby mode, just turn the power button of the Master to ON.

Important: a.) Please keep the Slave at ON status if you would turn the Master into Sleep mode.

b.) When switching the Master unit power on, the Signal indication LED flashed as searching the Slave unit. If the Master and Slave units are out of working range, the Signal indication LED remains light while the Master unit could not find Slave unit.

c.) Please turn off the Master and Slave unit if NOT in use to save battery life.

Low battery

When the battery is low, you will hear a single beep sound every 2 minutes, please change the battery soon.

Important: If this kit is under low battery stage, it may cause abnormal high alarm or beeps to confuse actual working stage.

Button Function & LED indication

Function	Operation	LED Indication	Sound Indication
Power Off	Under Standby mode, switch "Power" button to Off	✘	✘
Power On	Switch the Power button to ON	Signal indication LEDs flash every second	✘
Search	Under standby mode, press the "Search" button	<i>Distance between Master & Slave is closer</i>	
		More LEDs light up	Melody is rapider
		<i>Distance between Master & Slave is farther</i>	
		LEDs light decreasingly	Melody is slower and diminuendo
		<i>Out of detection range</i>	
		Signal indication LEDs flash every second	Melody is slower and short beep every second
Alarm	Diasble Alarm function: During at standby mode, the master and Slave within 2 meters, power off the Master unit. Enable Alarm function: Switch the Master power on.	✓	✓
Wake Up	Under Sleep mode, switch the power button to ON	Signal indication LEDs flash	High beeps while re-linking
Disconnect	*** The connection range depends on the terrain environment.	Signal indication LEDs flash every second	High beep every second
Low battery	Master and Slave are out of range	Signal indication LEDs flash every second	A single beep sound every 2 minutes.

Care and maintenance

(a) Keep the device dry. Precipitation, humidity, and all types of liquids or moisture can contain minerals that may corrode electronic circuits. If your device gets wet, remove the battery, and allow the device to dry completely before replacing it.

(b) Do not use or store the device in dusty, dirty areas. Its moving parts and electronic components can be damaged.

(c) Do not store the device in hot areas. High temperatures can shorten the life of electronic devices, damage batteries, and warp or melt certain plastics.

- (d) Do not store the device in cold areas. When the device returns to its normal temperature, moisture can form inside the device and damage electronic circuit boards.
- (e) Do not attempt to open the device other than as instructed in this guide.
- (f) Do not drop, knock, or shake the device. Rough handling can break internal circuit boards and fine mechanics.
- (g) Do not use harsh chemicals, cleaning solvents, or strong detergents to clean the device.
- (h) Do not paint the device. Paint can clog the moving parts and prevent proper operation.
- (i) Do not put the Master and the Slave at same place in case of this kit is unable playing functions to guard your valued goods.
- (j) Search, detection, and alarm range depend on the terrain environment.
- (k) If the beep sound is not loud enough, the batteries may be low. Change with new batteries for louder alarm sound.
- (l) This product only assists in providing a warning alarm to remind the user. It does not guarantee to prevent theft or robbery of personal property.
- (m) If you want to use the device during flight trips, please comply with the flight safety law according to each country.
- (n) We reserve the right in changing the specification of the hardware and software designs to manuals at any time and without prior notice. Information in this document is subject to change without notice.
- (o) This product operational temperature is between 32°F ~131°F. Storage temperature is between 14°F ~140°F.

Recycle: The batteries provided in this product should be recycled to protect the local environment. Please contact your local recycle department for detail.

Warning: Do not put the batteries into the fire or heat sources. It may cause danger or even explosion.

FCC Certifications

Federal Communication Commission Interference Statement

This equipment has been tested and improved to comply with the limits of a Class B digital device, pursuant to Part 15 of the FCC Rules. These limits are designed to provide reasonable protection against harmful interference in a residential installation. This equipment generates, uses and can radiate radio frequency energy, if installed and used not in accordance with the instructions, may cause harmful interference to radio communications. However, there is no guarantee that interference will not occur in a particular installation. If this equipment does cause harmful interference to radio or television reception, which can be determined by turning the equipment off and on, the user is encouraged to try to correct the interference by one of the following measures:

- Reorient or relocate the receiving antenna.
- Increase the separation between the equipment and receiver.
- Connect the equipment into an outlet on a circuit different from that to which the receiver is connected.
- Consult the dealer or an experienced radio/TV technician for help.

This device complies with Part 15 of the FCC Rules. Operation is subject to the following two conditions:

(1) This device may not cause harmful interference, and (2) this device must accept an interference received, including interference that may cause undesired operation.

FCC Caution: Any changes or modifications are not expressly approved by the party responsible for compliance which could void the user's authority to operate this equipment.

EU Declaration Conformity

This product is carrying the CE-Mark in accordance with the related European Directives.

91E-T1B6-U50G00

