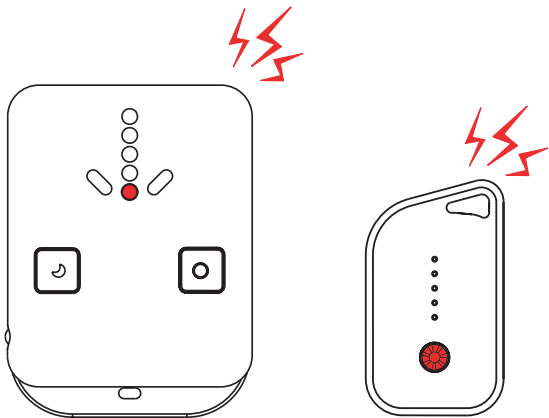
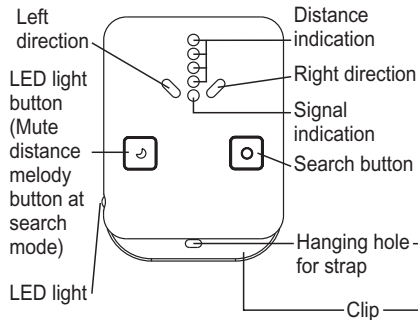


# Mini Tracker 505 User Manual

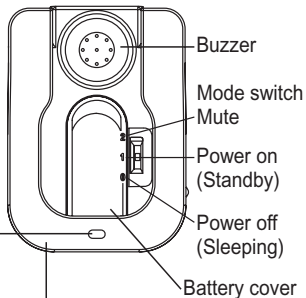


# Master

## Front

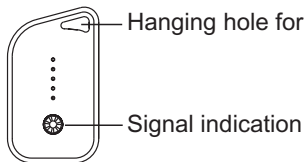


## Back

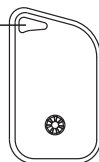


# Slave

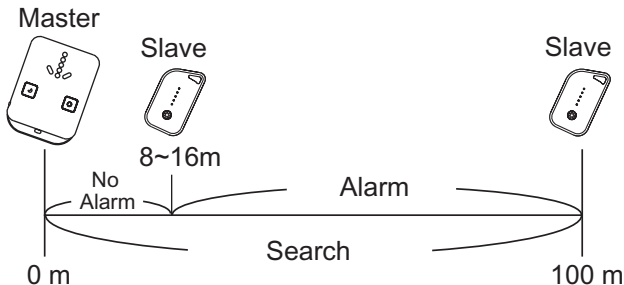
## Front



## Back



# Working Method



# Specification

## Master

Size : 39x48x6.8mm  
Frequency : 2.4GHz ISM  
Battery : LR1130 x 2pcs  
Switch : 3 sections  
Button : 2 buttons

## Slave

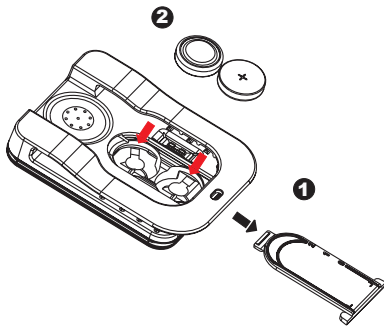
Size : 19x28x7.5mm  
Frequency : 2.4GHz ISM  
Battery : LR1130 x 2pcs



# The Battery Installment

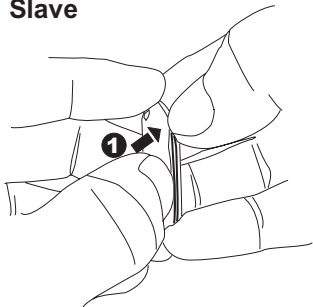
---

## Master

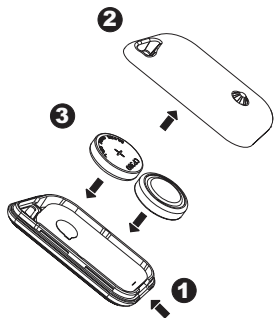


1. Press the clip on battery cover then push backwardly.
2. Put 2pcs batteries into.  
\*\*\*Make sure the installment direction of positive (+) & negative (-) of battery are followed up the drawing showed on battery cover.
3. Set the battery cover back.

## Slave



1. Open from the fillister on the bottom of housing or curve side by your nail, like open shell.



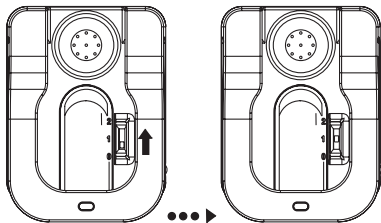
2. Put 2pcs batteries into.  
\*\*\* Make sure the installment direction of positive (+) & negative (-) of battery are followed up the drawing showed on the inside of back battery cover.
3. Set back the battery cover.

# Getting Started

1.

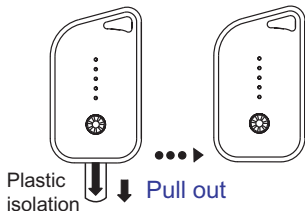
For the first time use, please set the battery into Master according to above battery installment .

2.

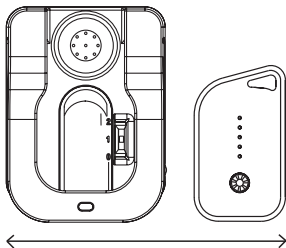


Switch to power on

3.

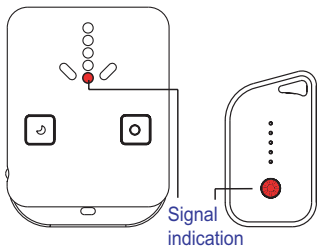


4.



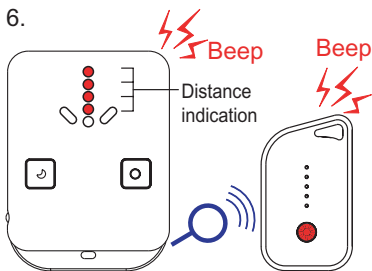
Place two devices no more than 10 cm apart

5.



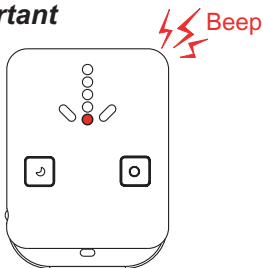
Signal LED ON for re-linking.

6.



Re-link successful!  
Master shows the distance  
with Slave via LED and  
melody (beep).

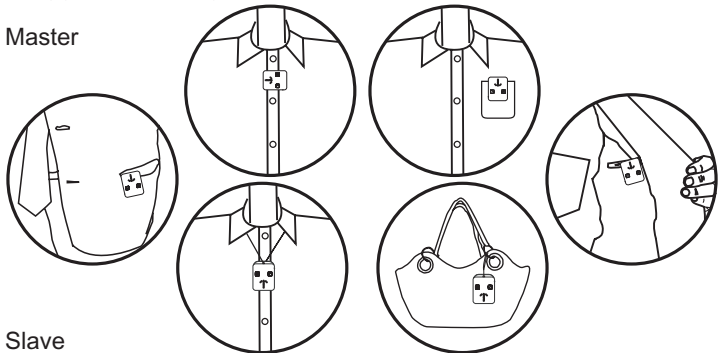
**Important**



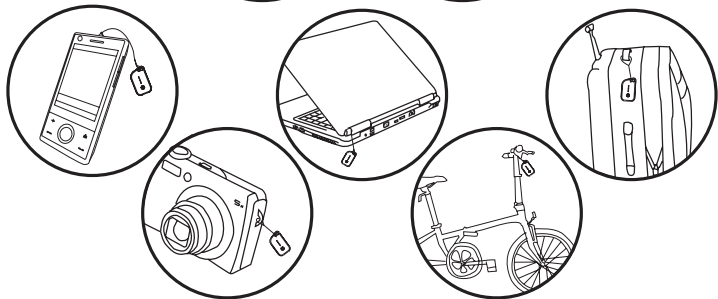
If Master can't link with Slave, it  
will beep once every few seconds.

## [Suggested setting place]

Master

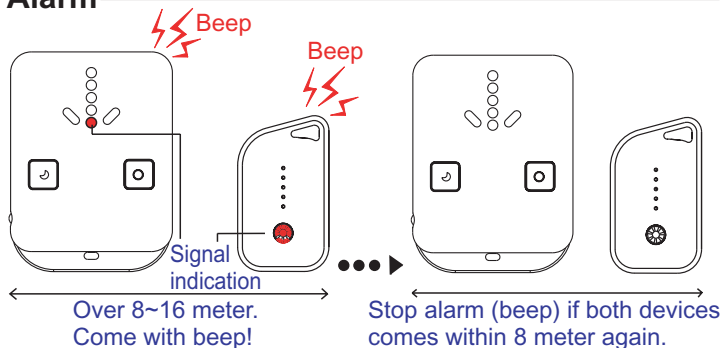


Slave





# Alarm

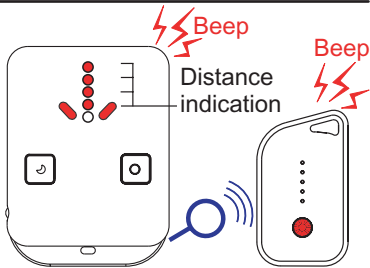
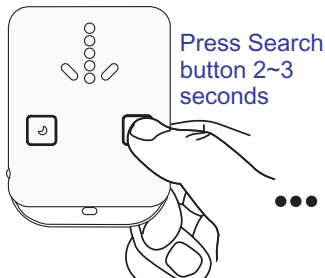


## Important

When Slave and Master are over 100 meter or lose signal



# Search

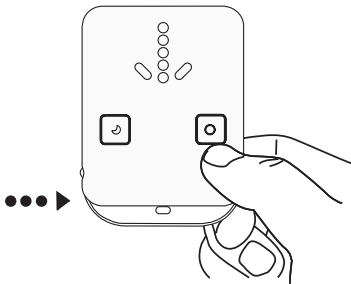


4 Distance indication LED and Right/Left direction LED lights up 1 second then release the Search button.

Start to detect the location of Slave

Display the intensity of signal on Master by

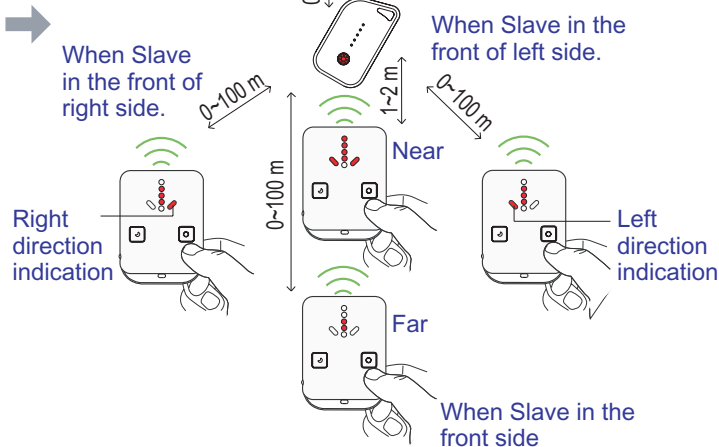
- 1.) LED light: more closer, more lights.
- 2.) Search melody: more closer, more rapid.

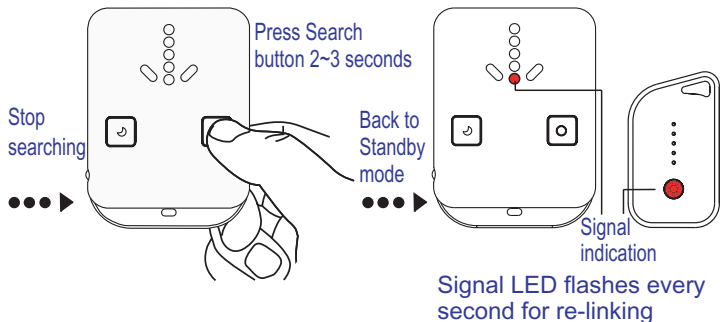


Flash signal LED by 3 seconds

- 1.) When Slave is on the back side.
- 2.) Go to wrong direction

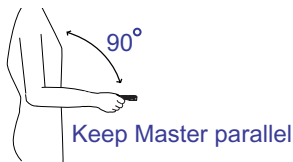
[Suggestion: Go to original direction or make a turn.]





## Important

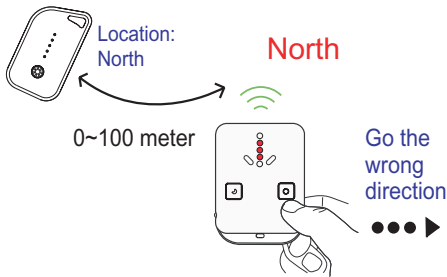
a.)  Correct holding



 Wrong holding

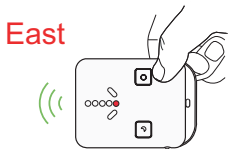


- b.) Error indication - whole direction LED goes off but signal LED lights up 3 seconds then displays new searched distance.
- b-1.) Search from correct direction to wrong direction
- b-2.) Over pass



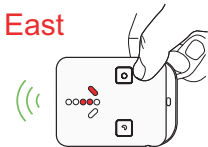
Original searching  
(Right direction)

Signal indication LED



Distance LED goes out  
all lights suddenly and  
only flash Signal LED  
with beep sound

3 seconds  
later



LED displays new  
searched distance

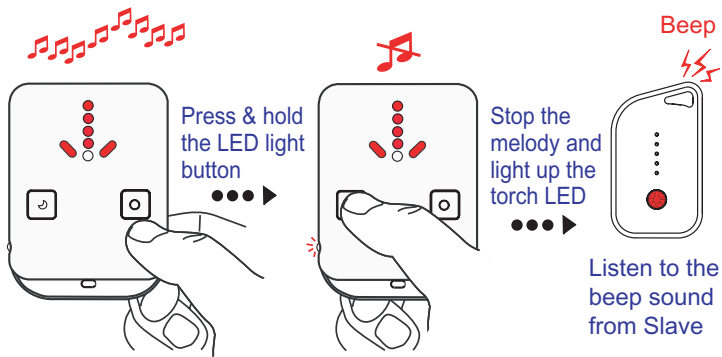


[Suggestion]



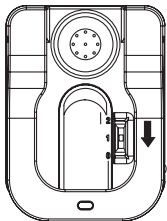
Go back to original  
search direction or  
location

- c.) Mute searching melody from Master. Listen beep sound from Slave to assist short range searching.

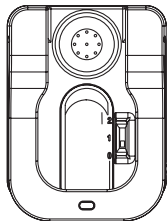


# Sleeping (No Need The Guard Service)

a.) Switch to sleeping mode



Switch the  
button to  
section 0

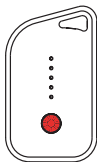


Stop signal  
to Slave

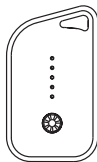


Under Standby mode

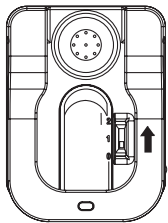
Slave flashes half minute  
to wait for re-linking



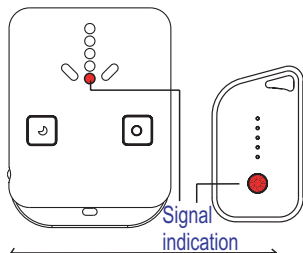
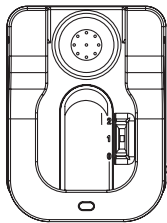
No linking then into  
sleeping mode and  
stop flash



b.) Re-link / Wake up

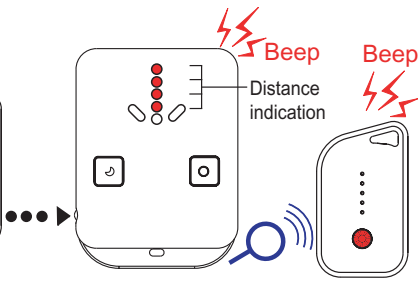


Switch the button to section 1



Signal LED ON for re-linking

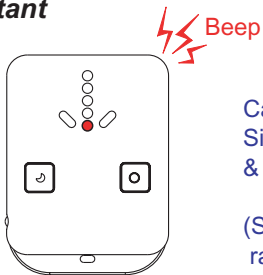
Available for distance within 100 meter



Re-link successful!  
Master shows the distance between Slave via LED and melody (beep)



## Important

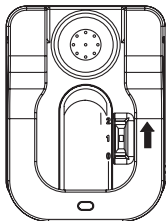


Can't get signal from Slave.  
Signal LED flashes each second  
& comes with beep.

(Slave maybe out off working  
range 100 meter, or no power.)

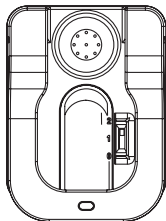
## Mute (Mute At Search mode, Or No Need The Guard Service) —

a.) Switch to mute mode

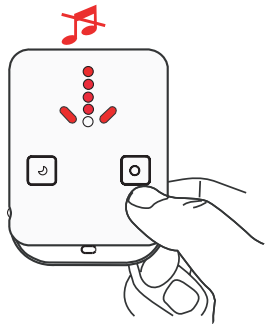


Under Standby mode

Switch the button  
to section 2



b.) Press Search button



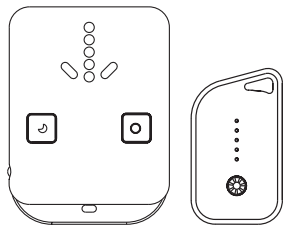
Only Display the distance indication LED without searching melody

### ***Important***

Under mute mode, the Alarm function is disabled.

## **Low Battery**

---



1 beep sound every 20 seconds continuously.

### ***Important***

If this kit is under low battery stage, it may cause abnormal display to alarm, beeps or non-working to confuse actual working stage. Please change new battery as soon as possible.

## Care and maintenance

---

- (a) Keep the device dry. Precipitation, humidity, and all types of liquids or moisture can contain minerals that will corrode electronic circuits. If your device does get wet, remove the battery, and allow the device to dry completely before replacing it.
- (b) Do not use or store the device in dusty, dirty areas. Its moving parts and electronic components can be damaged.
- (c) Do not store the device in hot areas. High temperatures can shorten the life of electronic devices, damage batteries, and warp or melt certain plastics.
- (d) Do not store the device in cold areas. When the device returns to its normal temperature, moisture can form inside the device and damage electronic circuit boards.
- (e) Do not attempt to open the device other than instructed in this guide.
- (f) Do not drop, knock, or shake the device. Rough handling can break internal circuit boards and fine mechanics.
- (g) Do not use harsh chemicals, cleaning solvents, or strong detergents to clean the device.
- (h) Do not paint the device. Paint can clog the moving parts and prevent proper operation.
- (i) Do not put Master and Slave at same place in case of this set is unable playing functions to guard your valued goods.
- (j) The working range, alarm range, searching and detection are depends the terrain environment because of radio wave efficiency.
- (k) If the beeps sound are not loud enough, it may means the battery low. Change new battery for louder alarm sound.
- (l) This product only assists to provide the warning alarm for reminding the user. It does not guarantee to prevent steal or rob by personal safety and property if any urgent need. This product does not guarantee any damage of personal safety, property, material or the information loss, or other related loss.
- (m) If you want to apply this product during the flight trip, please comply with the flight safety law according to each country.
- (n) We reserve the right in changing the specification of the hardware and software designs to manuals at any time and without prior notice. Information in this document is subject to change without notice.
- (o) This product operational temperature is between  $0^{\circ}\text{C} \sim +55^{\circ}\text{C}$ . Storage temperature is between  $-10^{\circ}\text{C} \sim +60^{\circ}\text{C}$ .

**Recycle:** The Battery provided in this product should be recycled to protect the local environment. Please contact with local recycle department for detail.

**Warning:** Do not put the battery into the fire or heat resource. It will be cause dangerous or even explosion.

## **FCC Certifications**

---

### Federal Communication Commission Interference Statement

This equipment has been tested and improved to comply with the limits of a Class B digital device, pursuant to Part 15 of the FCC Rules. These limits are designed to provide reasonable protection against harmful interference in a residential installation. This equipment generates, uses and can radiate radio frequency energy, if installed and used not in accordance with the instructions, may cause harmful interference to radio communications. However, there is no guarantee that interference will not occur in a particular installation. If this equipment does cause harmful interference to radio or television reception, which can be determined by turning the equipment off and on, the user is encouraged to try to correct the interference by one of the following measures:

- Reorient or relocate the receiving antenna.
- Increase the separation between the equipment and receiver.
- Connect the equipment into an outlet on a circuit different from that to which the receiver is connected.
- Consult the dealer or an experienced radio/TV technician for help.

This device complies with Part 15 of the FCC Rules. Operation is subject to the following two conditions: (1) This device may not cause harmful interference, and (2) this device must accept an interference received, including interference that may cause undesired operation.

**FCC Caution:** Any changes or modifications are not expressly approved by the party responsible for compliance which could void the user's authority to operate this equipment.

FCC ID Master: WMPM05A01

Slave: WMPS05A01

### EU Declaration Conformity

This product is carrying the CE-Mark in accordance with the related European Directives.

