



表格编号: TCLAV-C4-4075001

版本: v 7.0

表格修订日期: 2021-09-02

物料编号: 72-A11002-QSGB6

内容: 操作指南(CN)\_带环绕

型号: A11002

图纸版本号: V1.0

是否含美国走向: 是

日期: 2021-12-23

美工制作人: 黄耀菲

此文件及附页属公司机密文件, 版权属通力电子控股有限公司所有, 任何人未经允许不得复制、抄袭。任何部门如有需求, 须向通力电子研发申请。  
These files are confidential documents in company, The copyright totally belongs to Tonly electronic holdings Limited, Anybody who are unauthorized is forbidden to copy and plagiarize the files. Any Department must get permission from the Tonly R&D if they need to use them.

## ART WORK FORM

(密级: C级)

品牌名称 (BRAND NAME): POLK文档提供 (FROM): POLK

工艺说明 (尺寸单位: 毫米 (mm)):

02/49/54/55/56/57/59/67/79 类:

部品	XXXX
工艺、颜色	
成型及颜色 (直接注塑颜色)	N/A
喷油及颜色	N/A
丝印颜色 /移印颜色	N/A
电镀/真空镀 及颜色	N/A
烫金及颜色	N/A
镭 雕	N/A
氧化及颜色	N/A
其他工艺	N/A
备 注	N/A

74/89 类:

印刷方式	XXXX
备 注	N/A

76 类:

印刷方式	XXXX
表面工艺	N/A
样板需求	<input type="checkbox"/> 签正式样板 <input type="checkbox"/> 签彩稿样板 <input type="checkbox"/> 基础机型彩盒样板参考料号: 76-XXXXXX-XXXXX
备 注	N/A

70/72/99 (说明书光盘) 类:

语言种类	1种语言
材 质	封面: 120g双胶纸 内页: 120g双胶纸
尺 寸	长: 168mm 宽: 124mm
印刷方式	四色+专色 (Pantone 7599C)
表面工艺	N/A
装订方式	风琴折两折 (折叠示意图参考P2)
页 数	6P
备 注	展开尺寸: 504mm x 124mm

71 类:

表纸材质	型号: XXXX 厚度: XXXX
胶水材质	型号: XXXX 是否可移: XXXX
尺 寸	长: XXXX 宽: XXXX
印刷方式	XXXX
表面工艺	XXXX
打印方式	XXXX
粘贴位置	XXXX
材质库编码	N/A
样板需求	<input type="checkbox"/> 需要签样 <input type="checkbox"/> 不需要签样 <input type="checkbox"/> 参考料号: 71-XXXXXX-XXXXX
<input type="checkbox"/> UPC/ <input type="checkbox"/> EAN/ <input type="checkbox"/> JAN	N/A
备 注	N/A

### 制作要求 (\* FOR ALL):

- 条码扫描等级达到C级以上;
- 美国走向必须满足CP65要求;
- 必须满足RoHS2.0、REACH要求;
- 必须符合TCL通力《公司环境管理物质标准》要求;
- 所有用于纸制品印刷的油墨禁止含有矿物油;
- 中国境内生产和/或使用的涂料、油墨、胶粘剂、清洗剂必须符合中国国标VOC的要求;
- QR Code的制作或打印过程中需选择模型2 (M2);
- 所用油墨必须达到TCL质量部门检测标准;
- 胶袋材质、胶袋上透气孔的大小、位置以结构认可书为准;
- PE材质的胶袋其上面的丝印内容整体长度可允许3mm误差;
- 珍珠棉等材质的胶袋其上面的丝印内容整体长度可允许5mm误差;

### \* FOR HUAWEI:

- 满足无卤要求;
- 满足不含有邻苯二甲酸盐要求。

### \* FOR SAMSUNG:

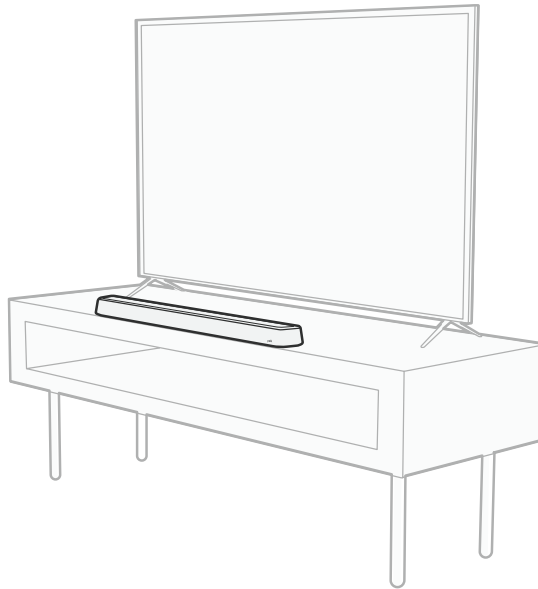
- VD类产品需满足三星的SS要求, AI类产品需满足三星SA要求。

### \* FOR SONY:

- 禁止使用SS-00259中规定的1级环境管理物质。
- 再生树脂、被覆线材必须从索尼的绿色伙伴认定供应商处采购。

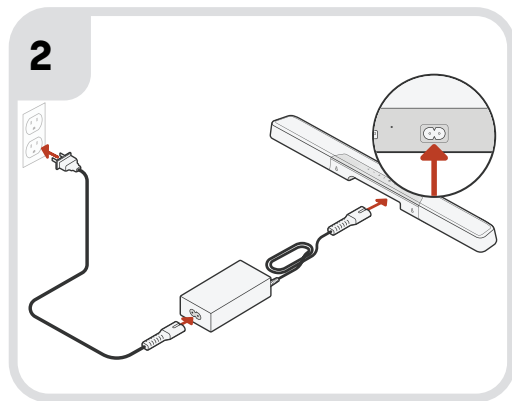
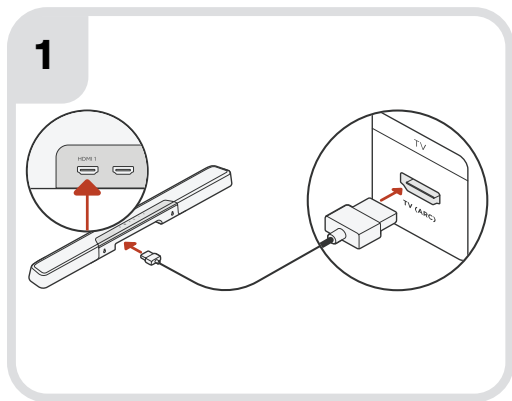


# Place the sound bar



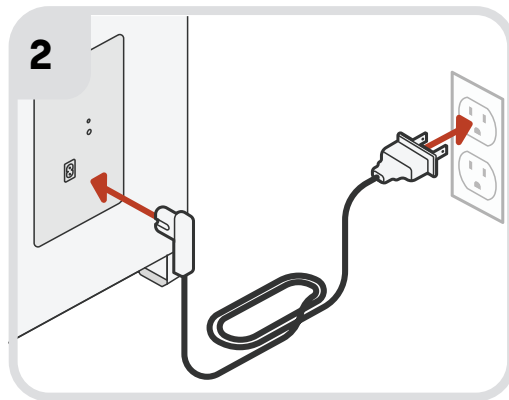
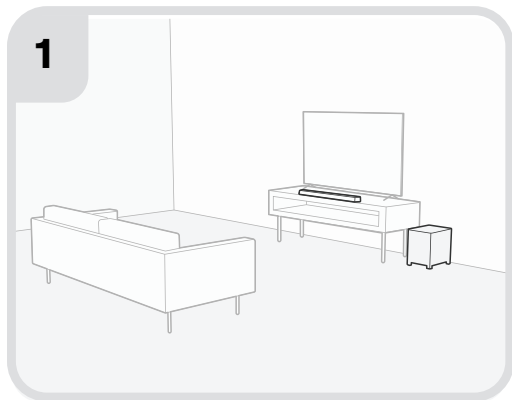
For the best listening experience, place the sound bar centered under your TV and flush with the front edge of your cabinet.

# 2 Connect to a TV and power



Use the included HDMI cable to connect the sound bar to your TV, then connect the sound bar to power.

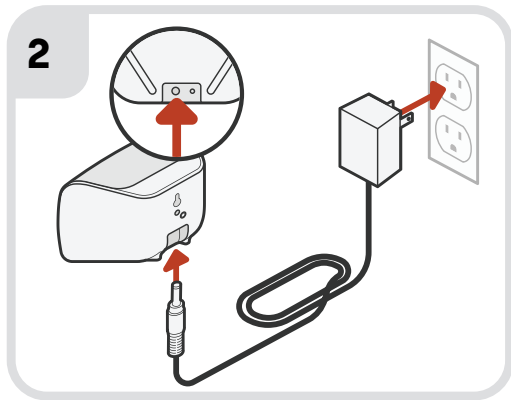
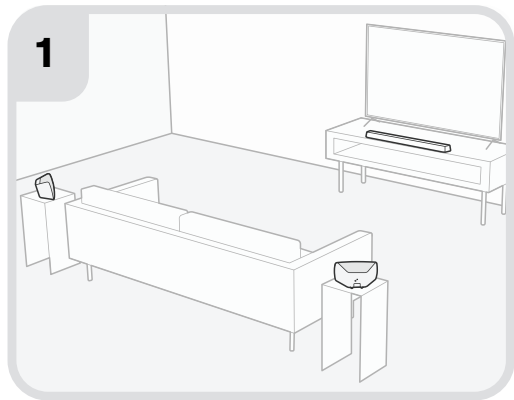
# 3 Set up the subwoofer



Place the subwoofer along the same wall as the TV, and no further than 30ft (10m) from the sound bar, then connect the power cable.



# 4 Set up the SR2 Surrounds



Place the surround speakers, then connect the power cables.

# 5 Connect to Wi-Fi®

Connect your sound bar to Wi-Fi® to complete setup and receive important software updates that will improve performance, enable new features, and enable music streaming. Choose one of the methods below.

## Amazon Alexa app setup:

Download the Amazon Alexa app on iOS or Android, and follow the in-app instructions to connect your MagniFi Max AX sound bar to Wi-Fi.



## Apple AirPlay setup:

1. Press and hold the power button on the top panel of the sound bar until you hear a beep and "WI-FI SETUP" displays on the sound bar.
2. Confirm that your iOS device is connected to the Wi-Fi network you want MagniFi Max AX to join.
3. On your iOS device, go to **Settings > Wi-Fi**.
4. Scroll down to SETUP NEW AIRPLAY SPEAKER, and tap **MagniFi Max AX-XXXX**.
5. Follow the on-screen instructions.



# Setup is now complete!

Visit us online to download the user manual, see frequently asked questions, or get troubleshooting assistance.



[www.polkaudio.com/magnifimaxax](http://www.polkaudio.com/magnifimaxax)

