

TOLERANCES	A	B	C	D	ANGLE
~16	0.05	0.1	0.2	0.4	±10'
16~63	0.1	0.2	0.4	0.6	±15'
63~150	0.15	0.25	0.5	0.8	±30'
150~250	0.2	0.3	0.6	1	±1'
250~500	0.4	0.6	0.8	1.5	±

WARNING
TO REDUCE THE RISK OF FIRE OR ELECTRIC SHOCK,
DO NOT EXPOSE THIS APPLIANCE TO RAIN OR MOISTURE.
NO USER SERVICEABLE PARTS INSIDE. REFER SERVICING
TO QUALIFIED SERVICE PERSONNEL.

CAUTION
RISK OF ELECTRIC SHOCK
DO NOT OPEN

AVERTISSEMENT
POUR RÉDUIRE LES RISQUES D'ÉLECTROCUTION, GARDEZ
CET APPAREIL À L'ABRI DE LA PLUIE ET DE L'HUMIDITÉ.
AUCUNE PIÈCE INTERNE RÉPARABLE PAR L'UTILISATEUR.
CONFIER L'ENTRETIEN À UN PERSONNEL QUALIFIÉ.

ATTENTION
RISQUE D'ÉLECTROCUTION
NE PAS OUVRIR

DOLBY AUDIO Manufactured under licence from Dolby Laboratories. Dolby,
Dolby Audio and the double-D symbol are trademarks of
Dolby Laboratories.

Bluetooth The Bluetooth word mark and logos are registered trademarks
owned by Bluetooth SIG, Inc. and any use of such marks by Polk
Audio is under license. Other trademarks and trade names are those
of their respective owners.

**DESIGNED & ENGINEERED
IN THE USA. ASSEMBLED IN CHINA**

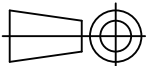
This device complies with Part 15 of the FCC Rules. Operation is subject to the following two conditions: (1) this device may not cause harmful interference, and (2) this device must accept any interference received, including interference that may cause undesired operation.
FCC ID: WLQAM8111CTX IC: 7956A-AM8111CTX CAN ICES-3 (B) / NMB-3 (B)

- NOTE :**
- IF TOLERANCE FOR EACH DIMENSIONS NOT SHOWN, REFER TO TABLE TABLE FOR TOLERANCE.
 - USE R=1.0MM FOR ALL RADII NOT SPECIFIED.
 - UNACCEPTABLE CONDITIONS: FLASH, SHRINKAGE, DEFORMATION, AND/OR SPOTS.
 - REPRESENTS REVISIONS OR NEW DIMENSIONS.
 - REPRESENTS CRITICAL AREAS TO BE MEASURED.
 - ALL OTHER DIMENSIONS ARE FOR REFERENCE.
 - * REPRESENTS CRITICAL DIMENSIONS THAT CAN'T BE CHANGED FROM CLIENTS.
 - THE MOULD NUMBER: NO
 - TEXTURE NUMBER: NO
 - ALL THE MATERIAL NEED CONFORM FOR "ZYLUX" <PART, ASSEMBLY, THE ENVIRONMENT CONTROL IN THE MATERIAL AND THE SUBSTANCE CONTROL PROCEDURE> STANDARD. (REFERENCE FILE "QMI-P40-01")

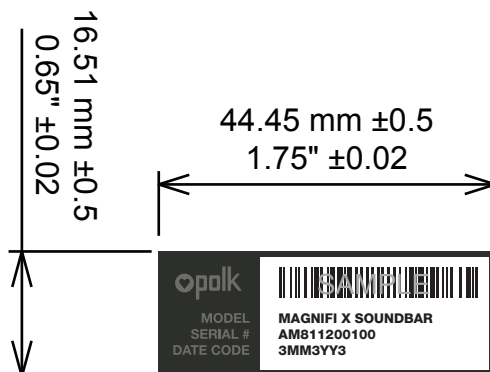
E			
D			
C			
B			
A	PROTOTYPE-A4	07.13-2016	LIJUAN LIAO
ISS	CHANGE RECORDS	DATE	REVISER

TITLE. POLK TRIBECA SOUNDBAR SAFETY LABEL	REV	SHEET	MODEL.: TS-0000052AA	DATE: 07.13-2016
	A	1/ 1	UNIT: MM	SCALE: 1:1
MATERIAL. 50# 透明龍+壓克力膠+啞膜	NO. K1203-0006632	APPROVAL.	CHECKED.	DESIGN.
COLOR. Pantone 10395 C	DRAWER.: LIJUAN LIAO	POBBY	YONG WANG	LIJUAN LIAO
Zylux Acoustic Corporation				

3RD ANGLE PROJECTION



TOLERANCES	A	B	C	D	ANGLE
~16	0.05	0.1	0.2	0.4	±10°
16~63	0.1	0.2	0.4	0.6	±15°
63~150	0.15	0.25	0.5	0.8	±30°
150~250	0.2	0.3	0.6	1	±1°
250~500	0.4	0.6	0.8	1.5	±



Colors 專色號

Pantone 10399



Pantone 10395

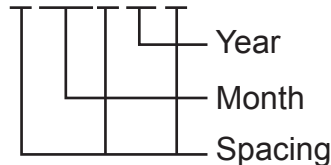


White



Barcode: Code 128
Scan: AM811200100

DATE CODE 3MM3YY3



SERIAL # AM811200100 & UP

SERIAL #後面的流水碼需與以下料件保持一致：

1203-0006533

1203-0006534

1203-0006536

NOTE :

- IF TOLERANCE FOR EACH DIMENSIONS NOT SHOWN, REFER TO TABLE TABLE FOR TOLERANCE.
- USE R=1.0MM FOR ALL RADII NOT SPECIFIED.
- UNACCEPTABLE CONDITIONS: FLASH, SHRINKAGE, DEFORMATION, AND/OR SPOTS.
- REPRESENTS REVISIONS OR NEW DIMENSIONS.
- REPRESENTS CRITICAL AREAS TO BE MEASURED. ALL OTHER DIMENSIONS ARE FOR REFERENCE.
- THE MOULD NUMBER: **NO**
- TEXTURE NUMBER: **NO**
- ALL SUBSTANCE NEED TO MEET THE **ROHS / REACH** REQUIREMENTS. DETAILS REFER TO ZYLUX'S PROCEDURE "QMI-P40-01".
- WILL USE ±0.05MM INNER DIAMETER FOR THE SCREW WHICH NOT SPECIFIED THE DETAILED DIMENSION.

S/N後面的流水碼規則要求：

當流水號流到AM811299999時，流水號從：AM8112A0001 & AM8112A9999

當流水號流到AM8112A9999時，流水號從：AM8112B0001 & AM8112B9999

注：此機種的延伸機種流水號要接著舊機種往下流，依此類推。

E			
D			
C			
B			
A	PROTOTYPE-A4	2016-07.13	LIJUAN LIAO
ISS	CHANGE RECORDS	DATE	REVISER

TITLE.	SERIAL-NO-LABEL 序號標籤 (SOUNDBAR)	REV	SHEET	MODEL.: TS-0000052AA	DATE: 2016.07.13	
		A	1/ 1			
METERIAL.	50#合成紙+霧面膜	NO.	K1203-0006535	UNIT: MM	SCALE: 1:1	
COLOR.	見備注說明	DRAWER.:	LIJUAN LIAO	APPROVAL.	CHECKED.	DESIGN.
Zylux Acoustic Corporation				POBBY	YONG WANG	LIJUAN LIAO

A

B

C

D

E