

EUT Internal Photos

Figure 3  
Internal View (Removed Antenna)



Figure 4  
Internal View (Removed Cover)

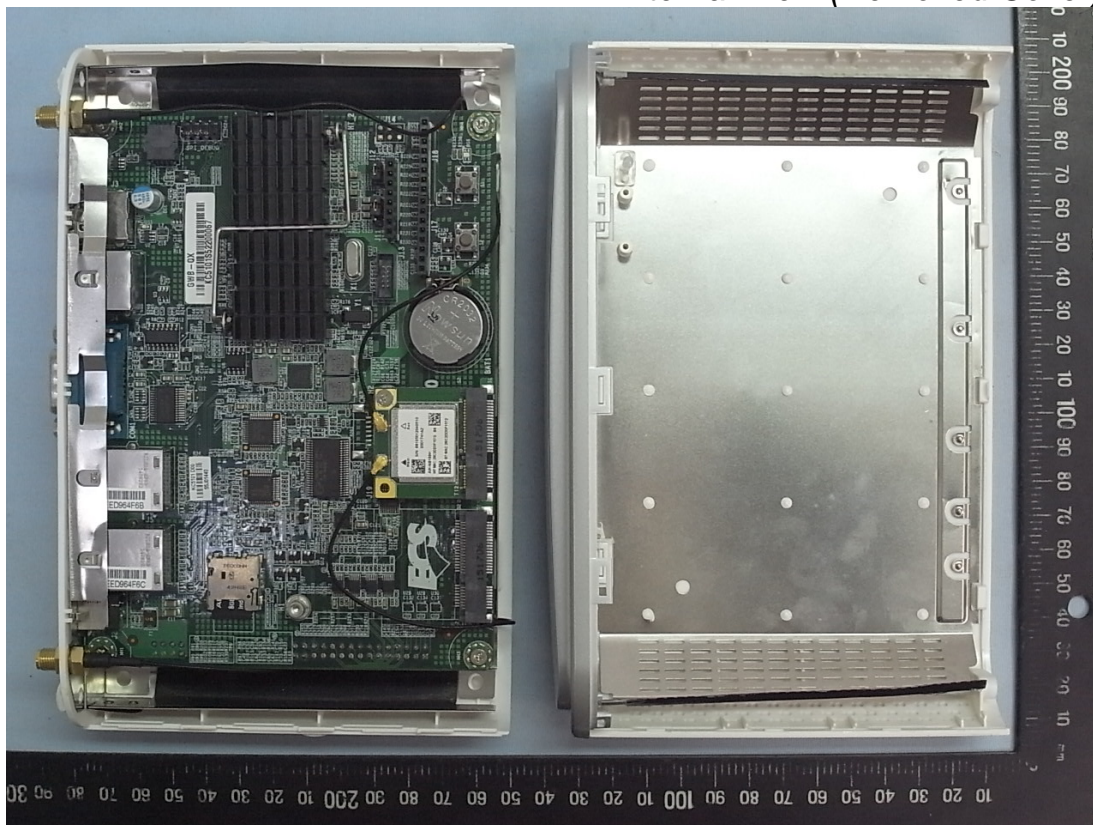




Figure 5  
Internal View

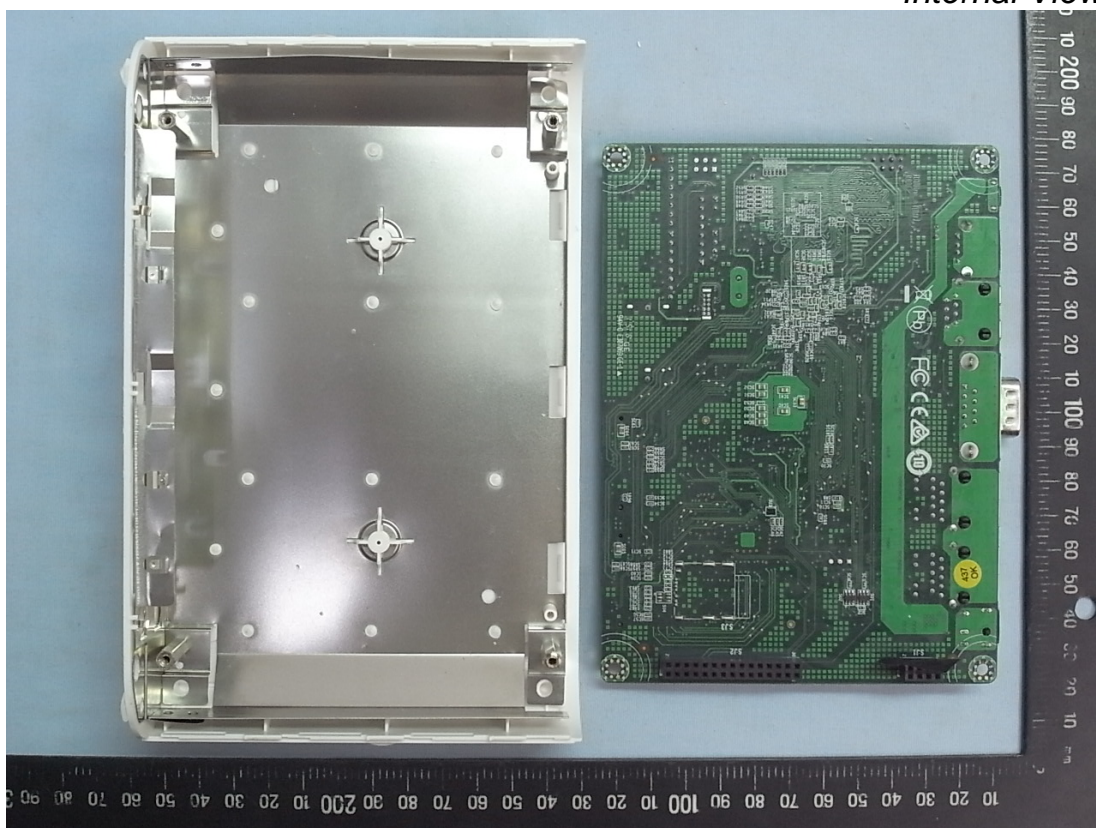


Figure 6  
Internal View

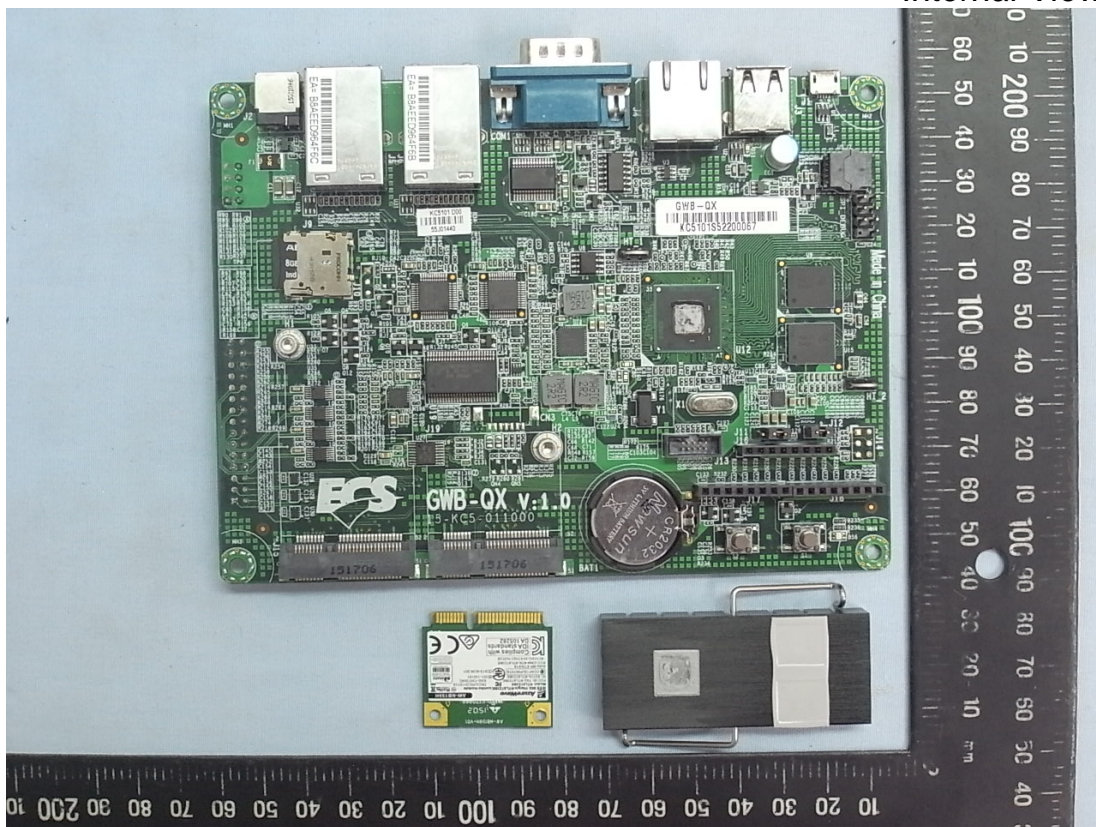




Figure 7  
Internal View (Main Board, Front View)

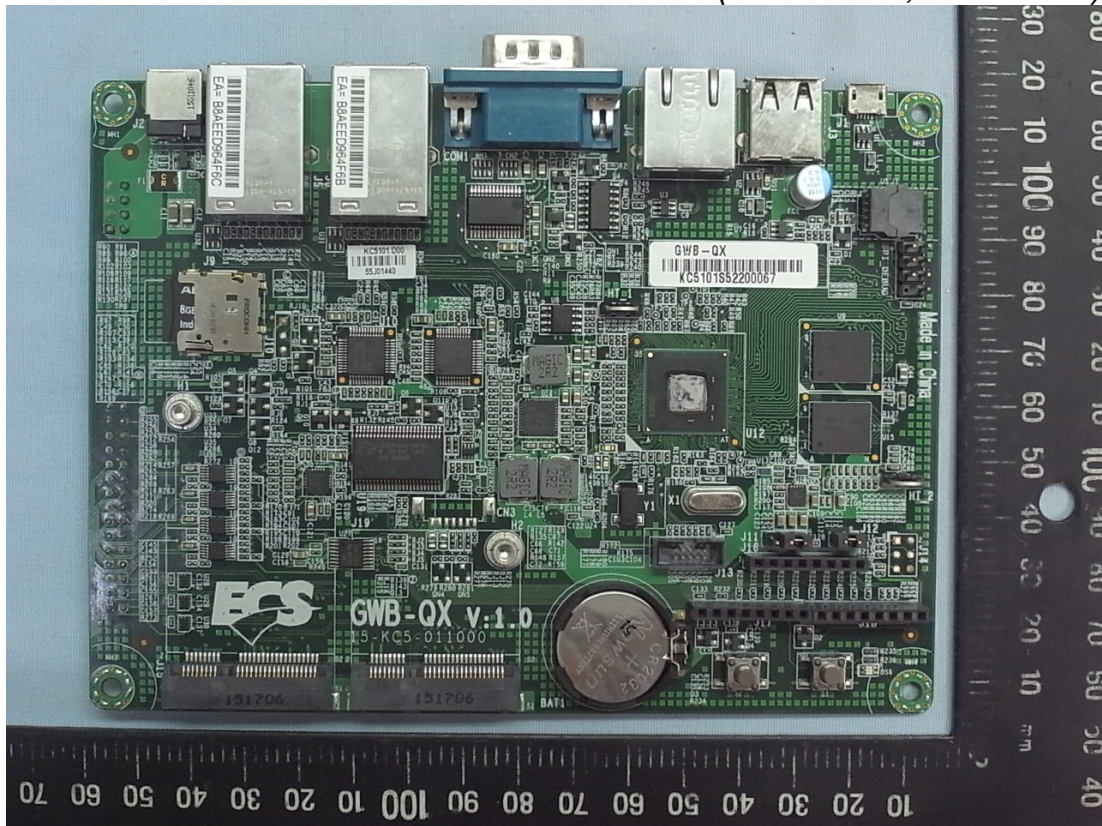


Figure 8  
Internal View (Main Board, Back View)

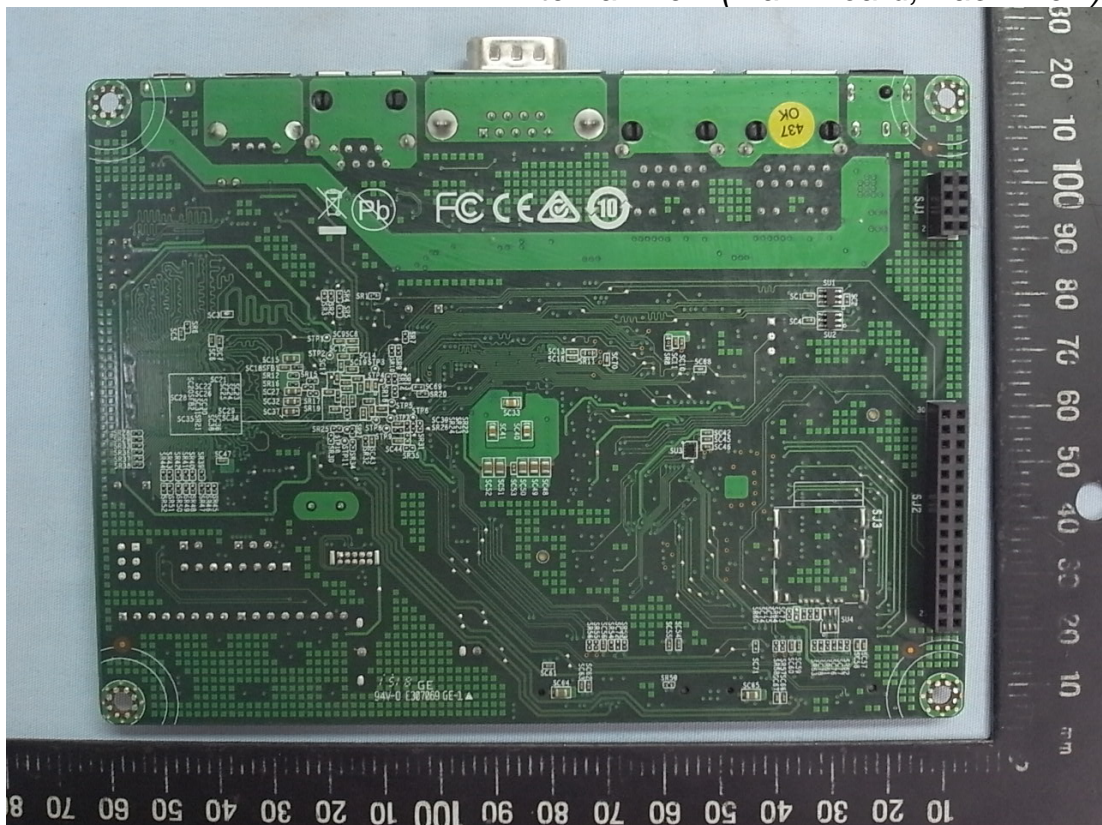




Figure 9  
Internal View (RF Board, Front View)



Figure 10  
Internal View (RF Board, Back View)



Figure 11  
Internal View (RF Board, Removed Cover, Front View)



Figure 12  
Internal View (RF Board, Removed Cover, Back View)





Figure 13  
AC Adapter (Front and Side View)



Figure 14  
AC Adapter (Back and Side View)



Figure 15  
AC Adapter (Label View)

