

EUT Internal Photos

Figure 9
Internal View (Removed Cover)

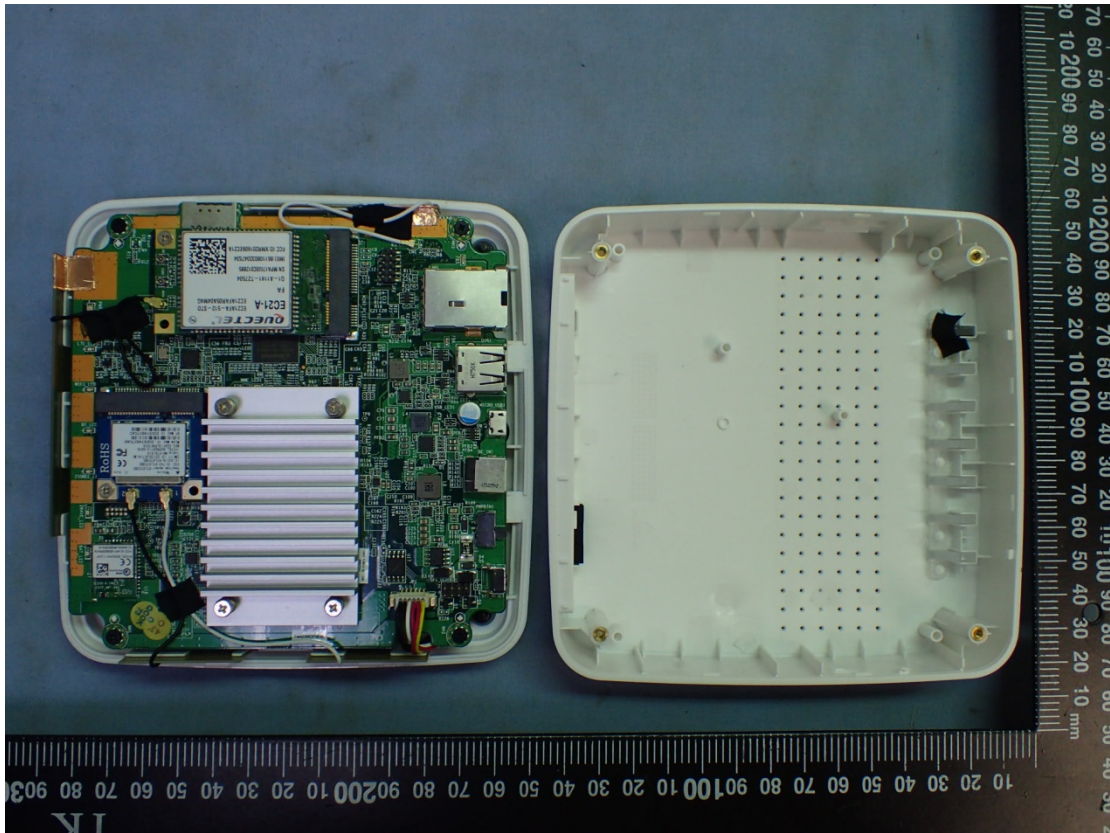


Figure 10
Internal View (Removed Main Board)

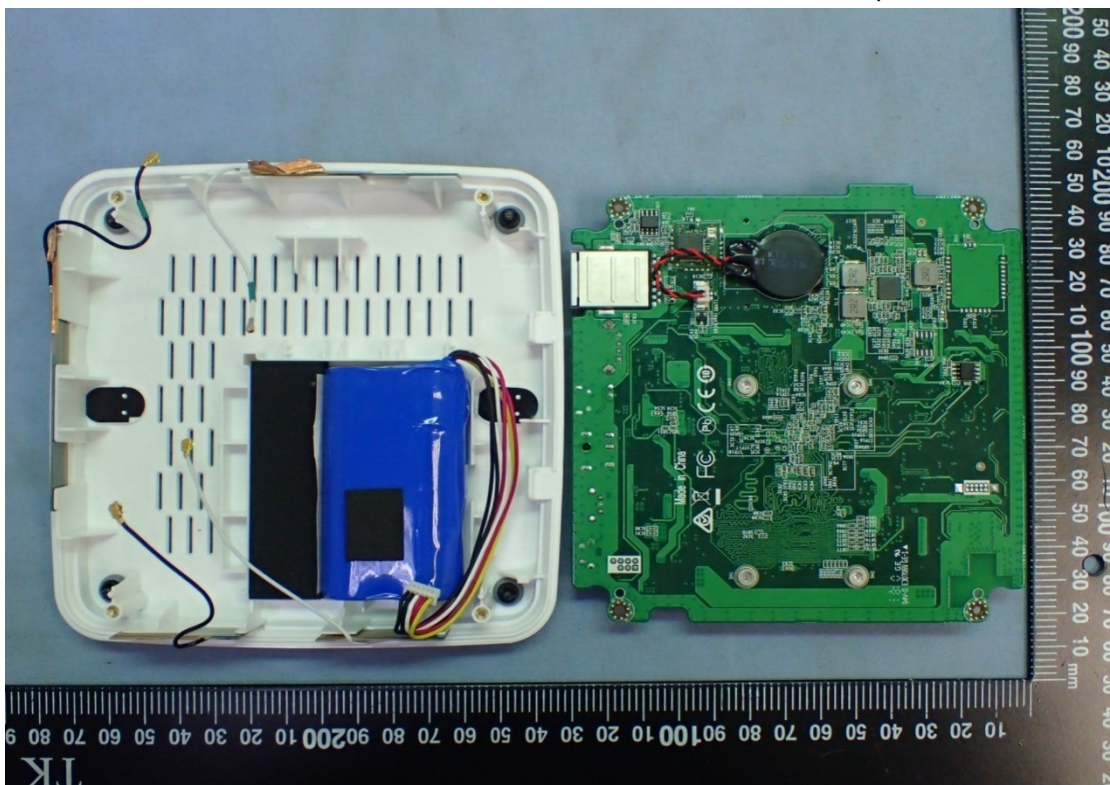


Figure 11
Internal View (802.11b/g/n RTL8723BE Combo module, Front View)

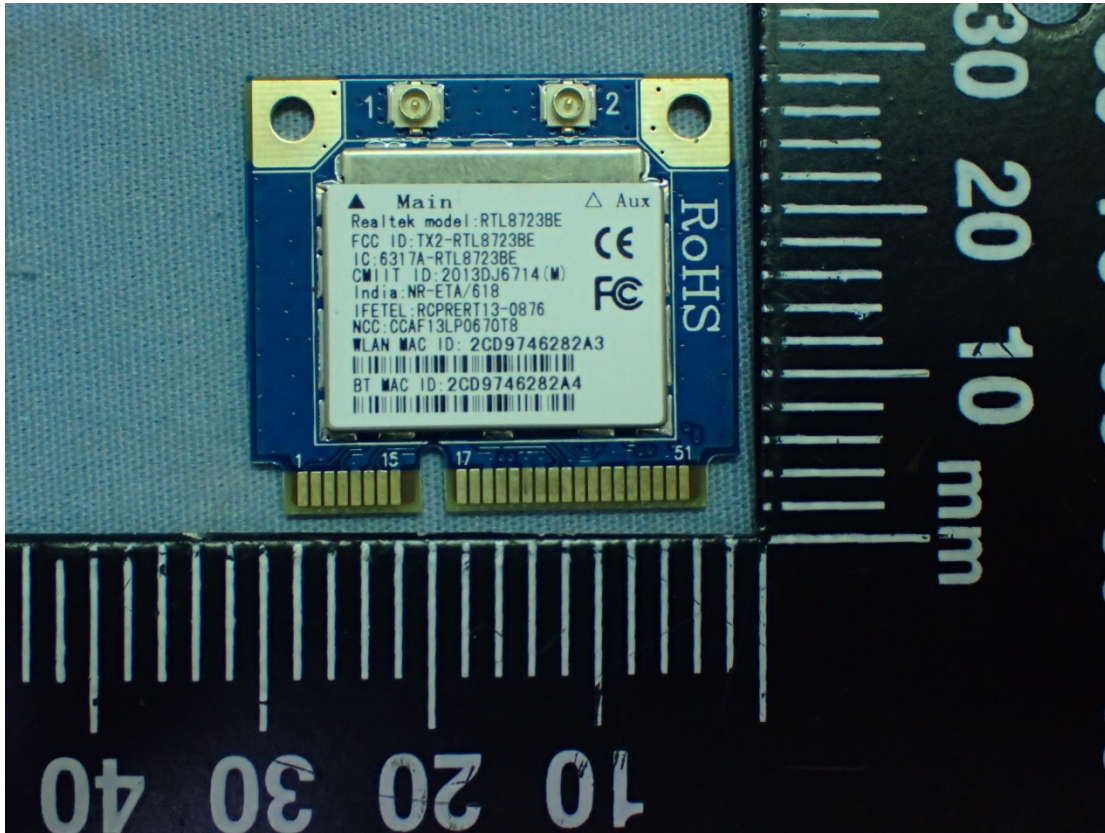


Figure 12
Internal View (802.11b/g/n RTL8723BE Combo module, Back View)

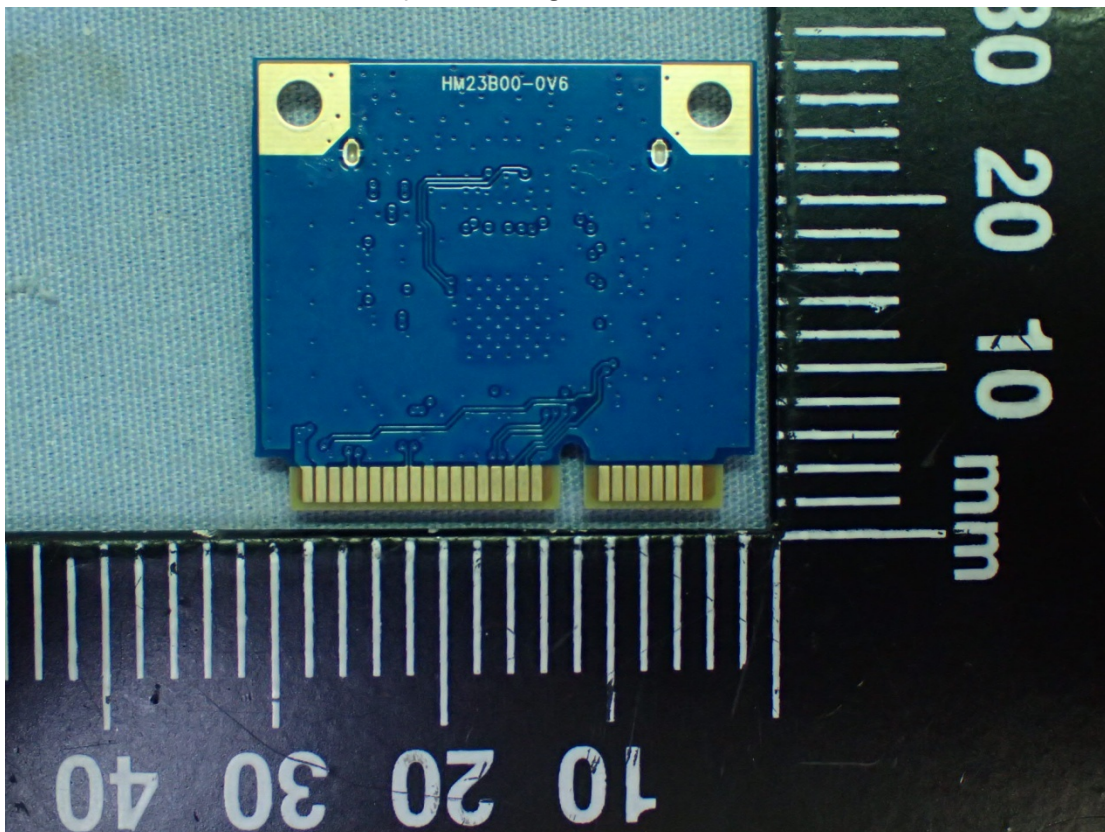


Figure 13
Internal View (QUECTEL LTE module, Front View)

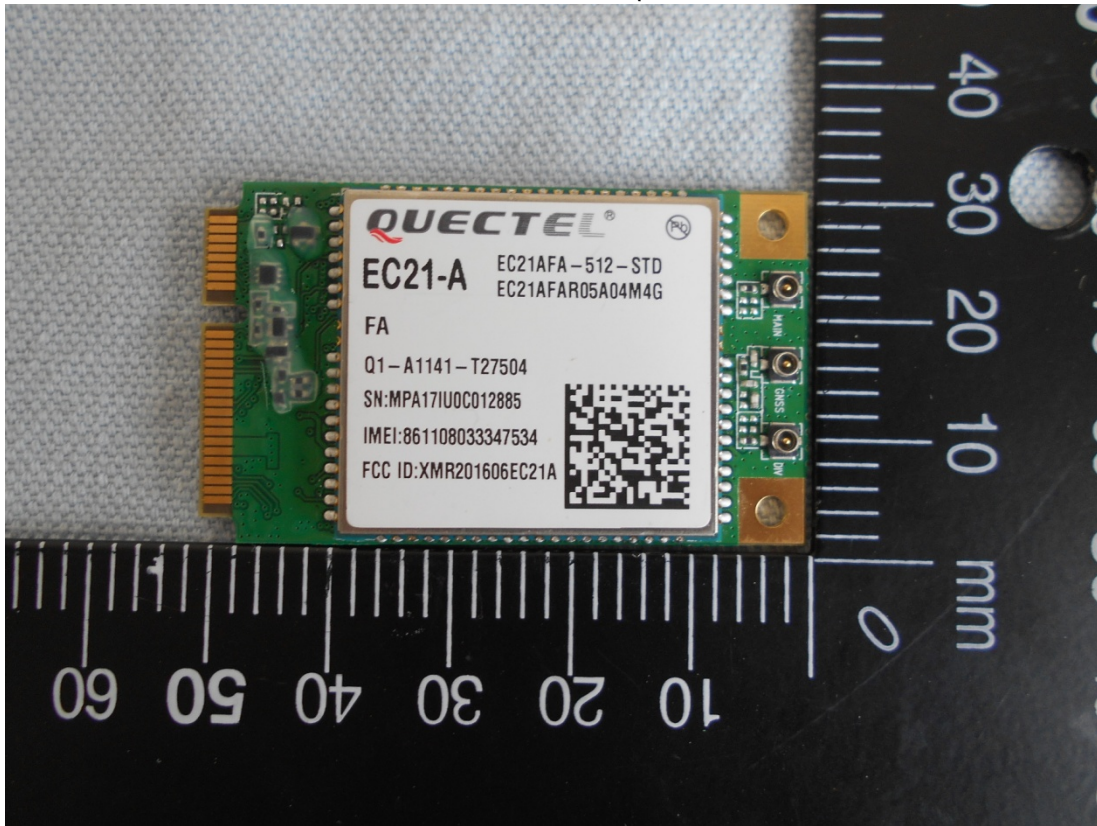


Figure 14
Internal View (QUECTEL LTE module, Back View)

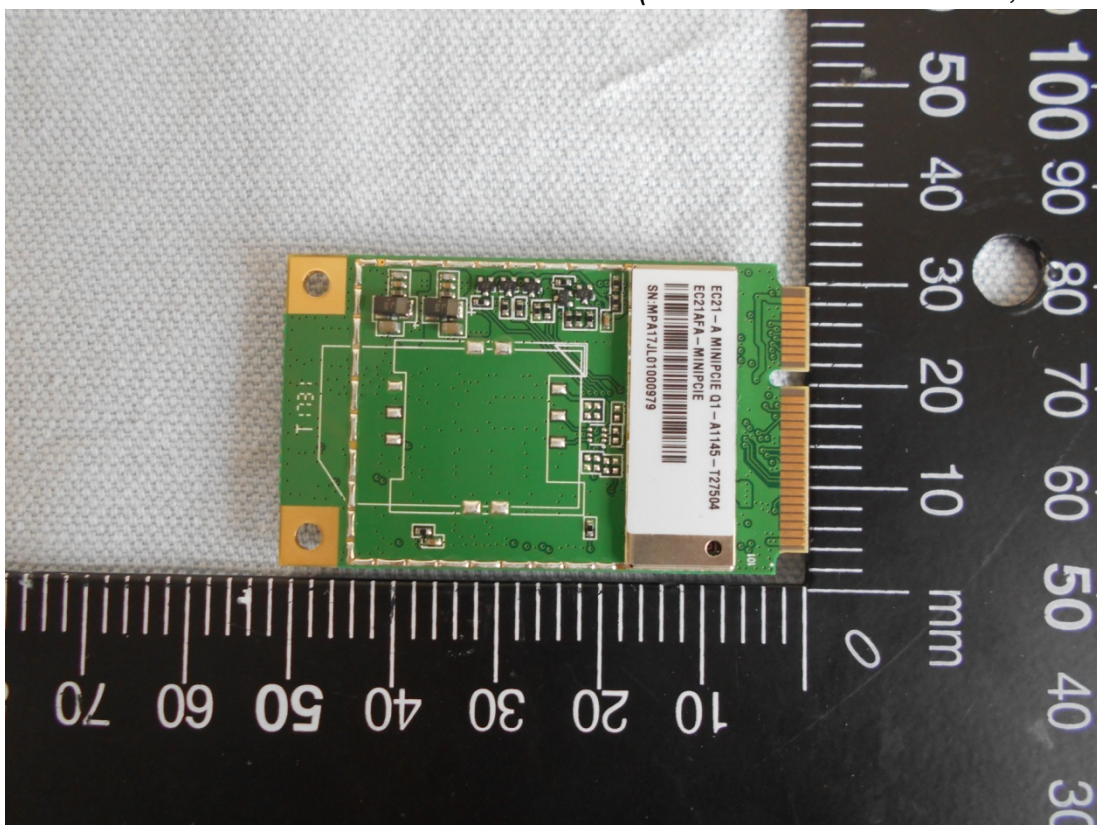


Figure 15
Internal View (Main Board, Front View)

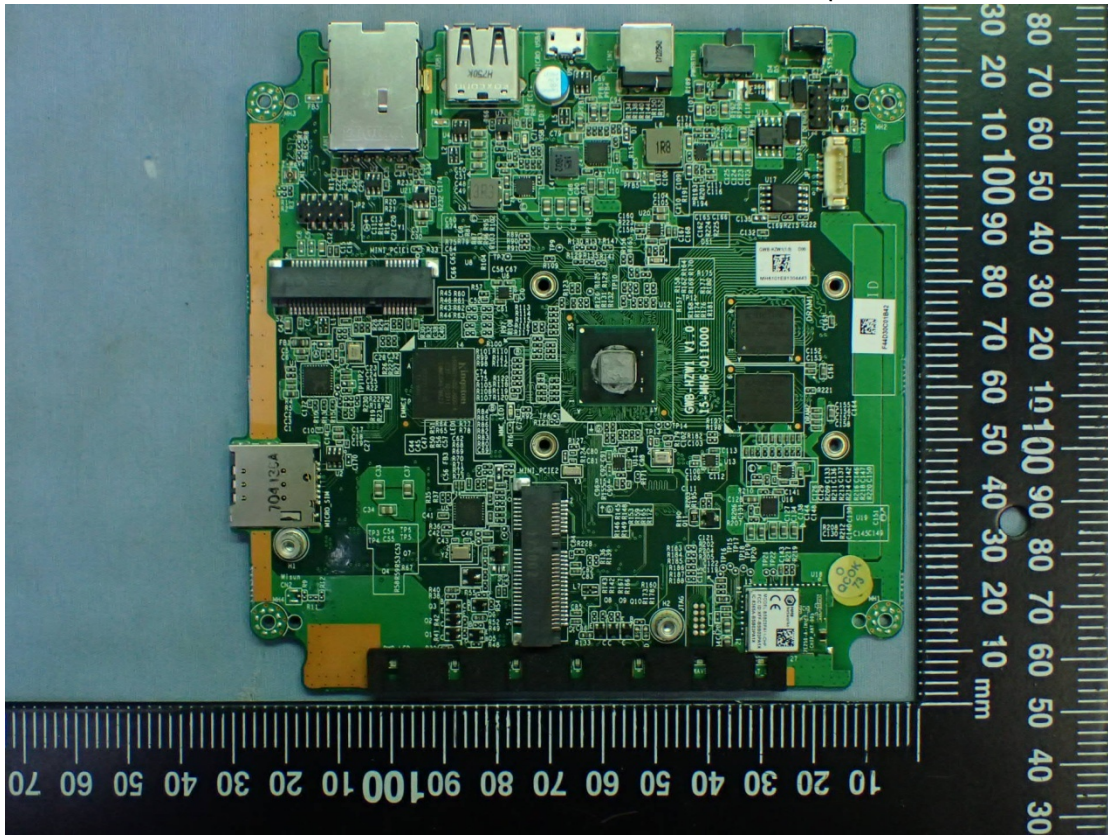


Figure 16
Internal View (Main Board, Back View)

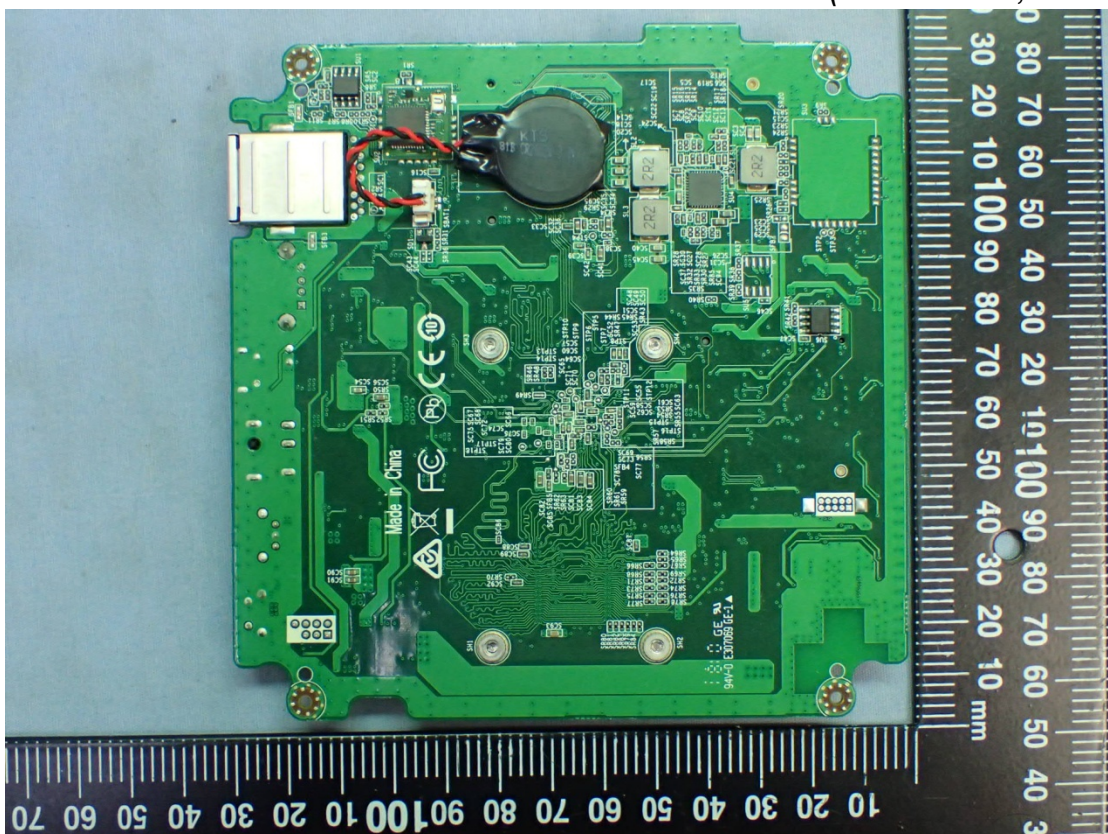


Figure 17
Internal View (Battery)

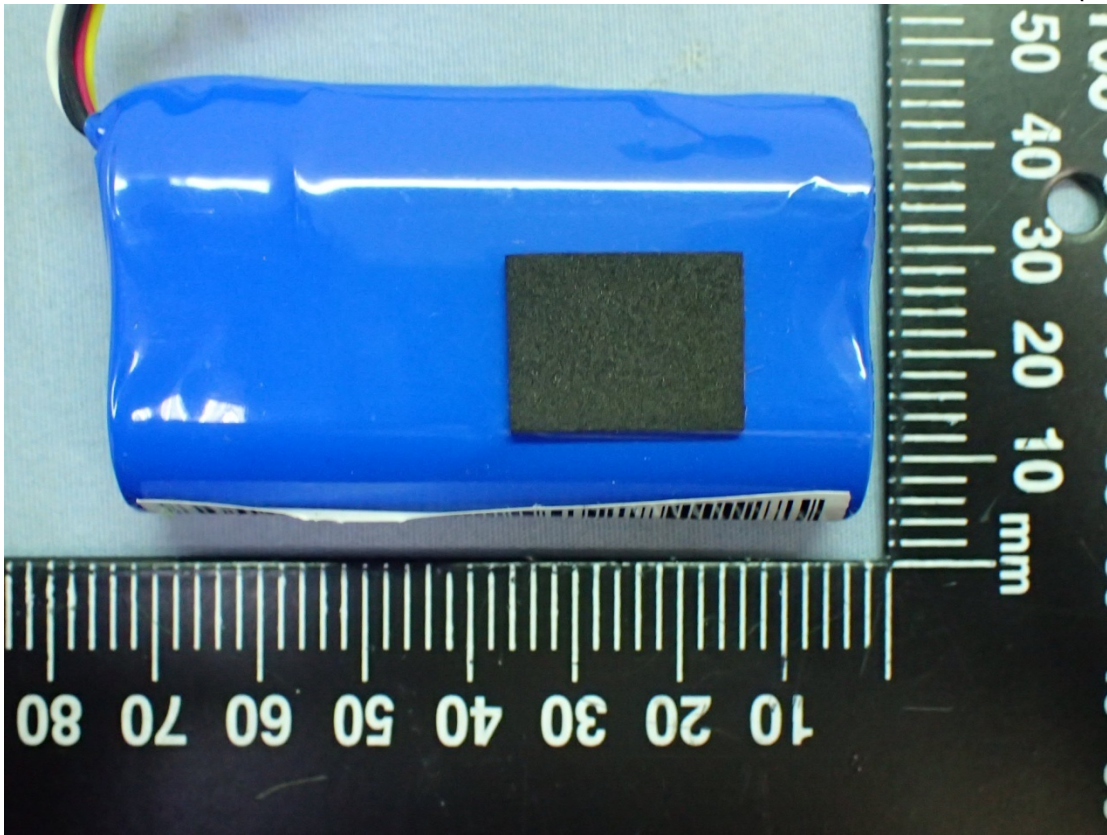


Figure 18
Internal View (Z-Wave General Purpose Module, Front View)

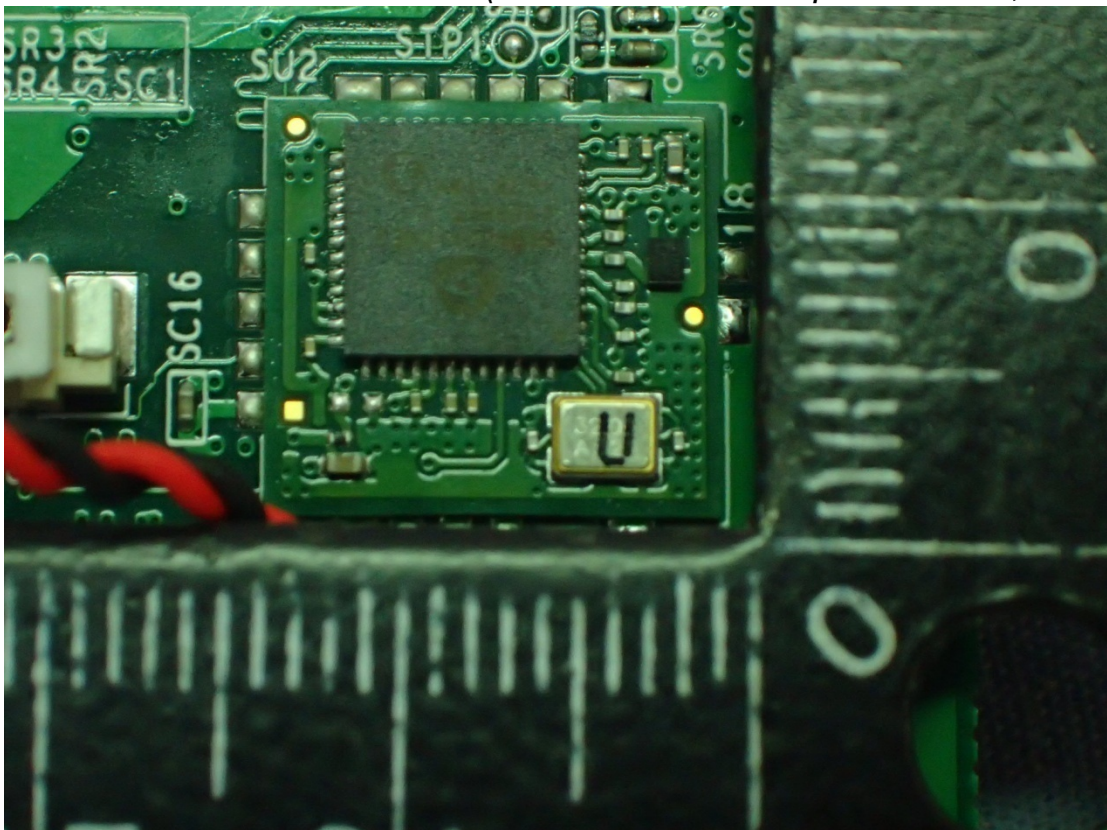


Figure 19
Internal View (Z-Wave General Purpose Module, Back View)

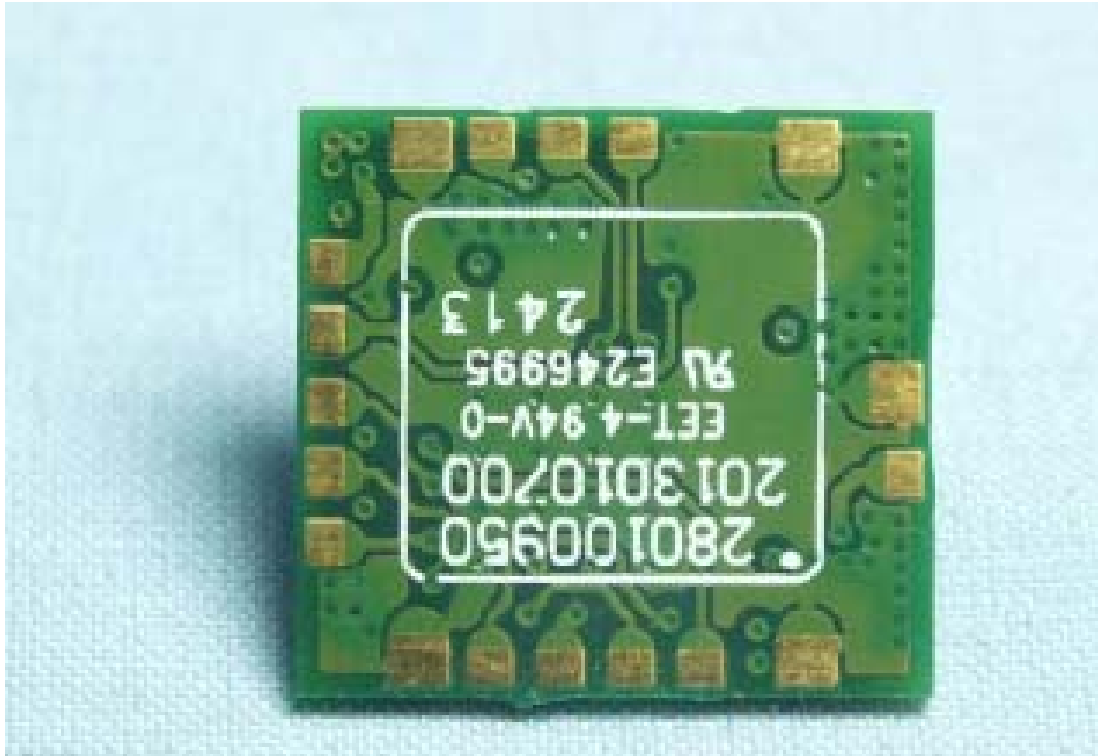
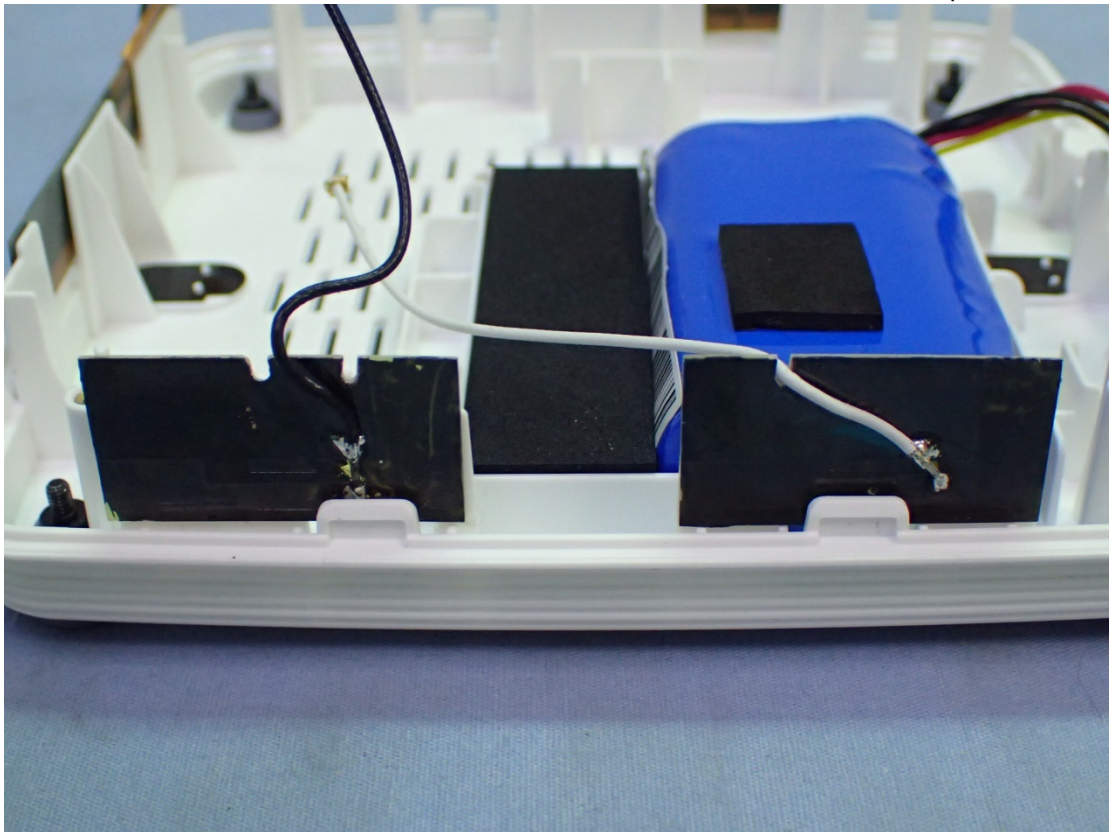


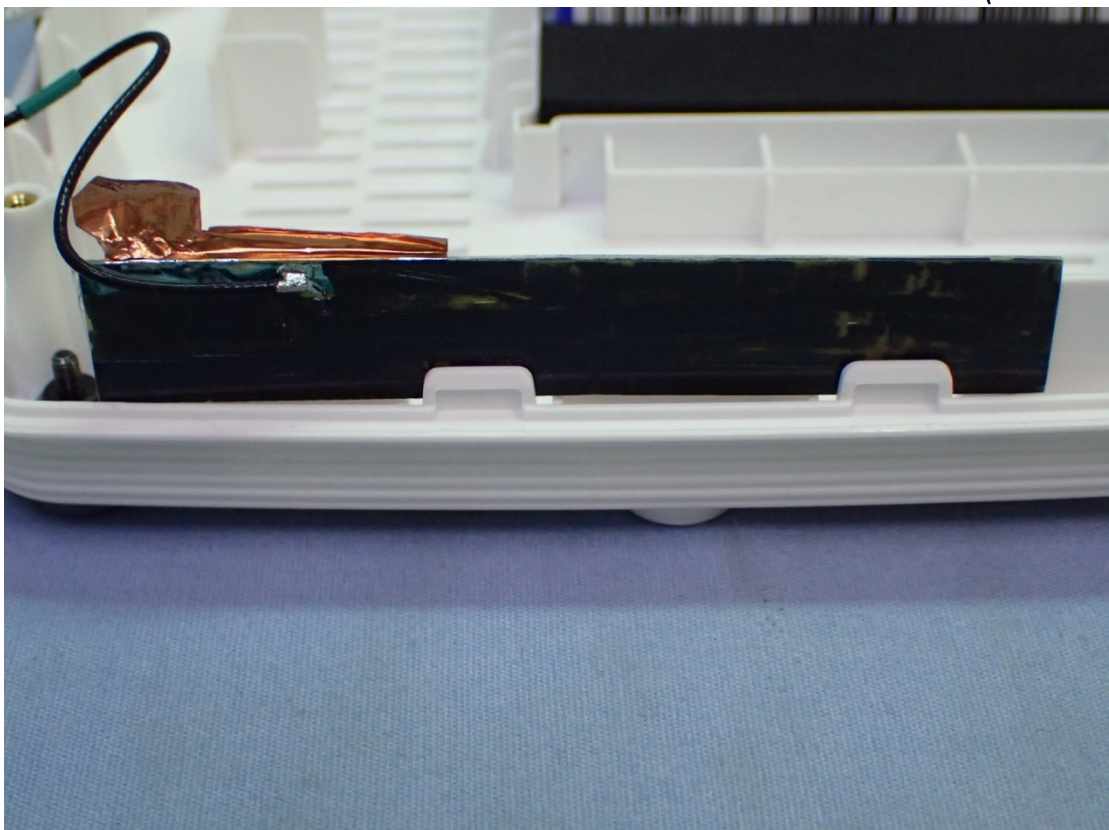
Figure 20
Internal View (EFR32 802.15.4 Module)



*Figure 21
Internal View (WLAN Antenna)*



*Figure 22
Internal View (LTE Antenna)*



*Figure 23
Internal View (Z-Wave Antenna)*

