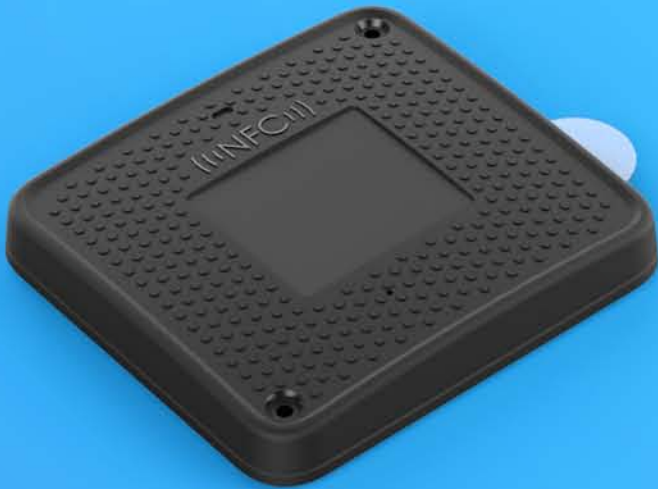


HARDWARE USER MANUAL



GWS-CSCG Tag
Logistics Monitoring Tag

Federal Communications Commission (FCC)

This equipment has been tested and found to comply with the limits for a Class B digital device, pursuant to Part 15 of the FCC Rules. These limits are designed to provide reasonable protection against harmful interference in a residential installation. This equipment generates, uses, and can radiate radio frequency energy and, if not installed and used in accordance with the instructions, may cause harmful interference to radio communications. However, there is no guarantee that interference will not occur in a particular installation. If this equipment does cause harmful interference to radio or television reception, which can be determined by turning the equipment off and on, the user is encouraged to try to correct the interference by one or more of the following measures:

- Reorient or relocate the receiving antenna
- Increase the separation between the equipment and the receiver
- Connect the equipment onto an outlet on a circuit different from that to which the receiver is connected
- Consult the dealer or an experienced radio technician for help

Shielded interconnect cables and a shielded AC power cable must be employed with this equipment to ensure compliance with the pertinent RF emission limits governing this device. Changes or modifications not expressly approved by the system's manufacturer could void the user's authority to operate the equipment.

FCC Label Compliance Statement

This device complies with Part 15 of the FCC Rules. Operation is subject to the following two conditions:

- (1) This device may not cause harmful interference
- (2) This device must accept any interference received, including interference that may cause undesired operation

RF Exposure Warning

This equipment must be installed and operated in accordance with provided instructions and the antenna(s) used for this transmitter must be installed to provide a separation distance of at least 20 cm from all persons and must not be co-located or operating in conjunction with any other antenna or transmitter. End-users and installers must be provided with antenna installation instructions and transmitter operating conditions for satisfying RF exposure compliance.

Canada, Industry Canada (IC) Notices

This device complies with Industry Canada's licence-exempt RSSs. Operation is subject to the following two conditions:

- (1) This device may not cause interference; and
- (2) This device must accept any interference, including interference that may cause undesired operation of the device.

Canada, avis d'Industry Canada (IC)

Le présent appareil est conforme aux CNR d'Industrie Canada applicables aux appareils radio exempts de licence. L'exploitation est autorisée aux deux conditions suivantes :

- (1) l'appareil ne doit pas produire de brouillage, et
- (2) l'utilisateur de l'appareil doit accepter tout brouillage radioélectrique subi, même si le brouillage est susceptible d'en compromettre le fonctionnement.

Radio Frequency (RF) Exposure Information

The radiated output power of the Wireless Device is below the Industry Canada (IC) radio frequency exposure limits. The Wireless Device should be used in such a manner such that the potential for human contact during normal operation is minimized.

This device has also been evaluated and shown compliant with the IC RF Exposure limits under mobile exposure conditions. (antennas are greater than 20cm from a person's body).

Informations concernant l'exposition aux fréquences radio (RF)

La puissance de sortie émise par l'appareil de sans fil est inférieure à la limite d'exposition aux fréquences radio d'Industry Canada (IC). Utilisez l'appareil de sans fil de façon à minimiser les contacts humains lors du fonctionnement normal.

Ce périphérique a également été évalué et démontré conforme aux limites d'exposition aux RF d'IC dans des conditions d'exposition à des appareils mobiles (antennes sont supérieures à 20 cm à partir du corps d'une personne).

Safety Instruction

Your system is designed and tested to meet the latest standards of safety for information technology equipment. However, to ensure your safety, it is important that you read the following safety instructions.

Setting up your system

- Read and follow all instructions in the documentation before you operate your system.
- Do not use this product near water or a heated source such as a radiator.
- Set up the system on a stable surface.
- Openings on the chassis are for ventilation. Do not block or cover these openings. Make sure you leave plenty of space around the system for ventilation. Never insert objects of any kind into the ventilation openings.
- If you use an extension cord, make sure that the total ampere rating of the devices plugged into the extension cord does not exceed its ampere rating.

Attention during use

- If you encounter the following technical problems with the product, unplug the power cord and contact a qualified service technician or your retailer.
 - The power cord or plug is damaged.
 - Liquid has been spilled into the system.
 - The system does not function properly even if you follow the operating instructions.
 - The system was dropped or the cabinet is damaged.
 - The system performance changes



The warranty does not apply to products that have been disassembled by users.

Safety Notice and warnings

Product disposal notice



IMPORTANT:

In the European Union, this symbol indicates that this product including battery must not be disposed of with household waste. It is your responsibility to hand it over to a designated collection point for the recycling of waste electrical and electronic equipment. For more information, please contact your local waste collection center or the point of purchase of this product.

CAUTION:

Risk of explosion if battery is replaced by an incorrect type.

Dispose of used batteries according to the instructions.

Nordic Lithium Safety Notice (for lithium-ion batteries)

Safety Notice:



Danger of explosion if battery is incorrectly replaced only with the same or equivalent type recommended by the manufacturer. Dispose of used batteries according to the manufacturer's instructions.

Attention during use



- 1. Do not place this product underneath heavy loads or in an unstable position.*
- 2. Do not use or expose this product around magnetic fields as magnetic interference may affect the performance of the product.*
- 3. Do not store this product to high levels of direct sunlight, high-humidity or wet conditions.*
- 4. Do not carry the product on the body (or pockets).*

CE marking



FCC marking

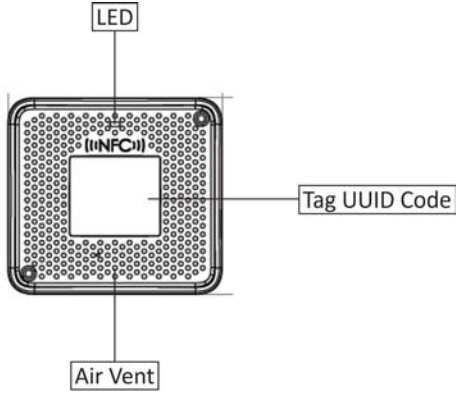


Brief Introduction

Specifications

Item	Spec Description	
MCU	Telink 8269f512 ET32	
LED	3 Color LED (RGB)	
Connectivity	NFC	< 4 cm
	Zigbee	30 m
Sensors	Temp/Humidity	
	Ambient Light	
	G-Sensor	
Battery Type	GR2450	
Operating Temperature	-20~60℃	
Dimension (W x L x H)	76* 70 *11 (mm)	
IP Level	IP54	

Tag exterior overview



How to use GWS-CSCG

Step 1: Power On/Off

1. Power On - Press button three times. On third press user must hold button down for 20 seconds.

If successful: Power icon on reflecting battery charge status on display, green LED pattern and positive audio chime.

If unsuccessful: Power icon reflecting insufficient battery on display, red LED light pattern and negative audio chime.

2. Power Off - Press button three times. On third press user must hold button down for 20 seconds.



User will not be able to power down device if the shipment is still active.

If successful: Power icon on reflecting battery charge status on UI, green LED pattern and positive audio chime.

If unsuccessful: Power icon will be reflected on UI, red LED light pattern and negative audio chime.



Step 2: NFC Tag Pairing

Tap powered on Gateway to Tag and press the NFC button to pair the Tag to the Gateway.



Paired:

Tag and Gateway LED display is **green** and Gateway beeps **positive tone**.

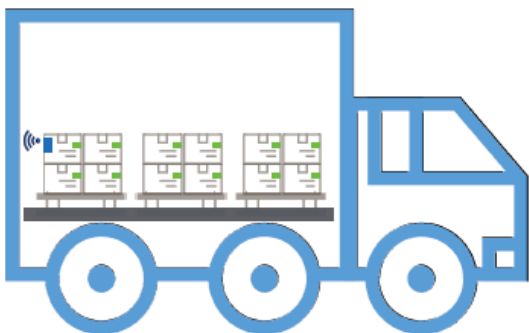


Not Paired or Bad Tag:

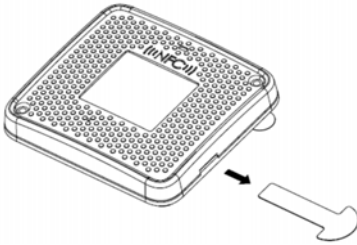
Tag and Gateway LED display is **red** and Gateway beeps **negative tone**.

Step 3: Load shipment

When loading pallets with Tags and Gateways onto a truck, try to place one pallet in the back of the truck, one pallet in the center of the truck and one pallet with the Gateway right by the door. Make sure that the Gateway faces the truck door, and is as close to the door as possible to ensure the Gateway signal can best maintain cell connectivity.



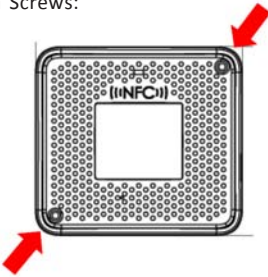
How to Power On Tag



By pulling the battery strip away from the Tag, the tag will be power-on with LED light blink.

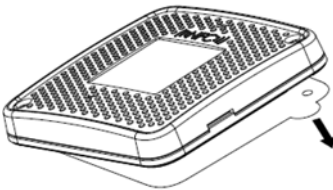
How to Attach Tag to Cargo

Via Screws:



By apply screws through the 2 mounting holes on the corner of tag, it can be secure to any wooden crate or box for transportation.

Via Self-tape:



By peeling off the back film and attache the tag to the side of shipping carton.

GWS-CSCG Tag

Logistics Monitoring Tag