

Federal Communication Commission Interference Statement

This device complies with Part 15 of the FCC Rules. Operation is subject to the following two conditions: (1) This device may not cause harmful interference, and (2) this device must accept any interference received, including interference that may cause undesired operation.

This equipment has been tested and found to comply with the limits for a Class B digital device, pursuant to Part 15 of the FCC Rules. These limits are designed to provide reasonable protection against harmful interference in a residential installation. This equipment generates, uses and can radiate radio frequency energy and, if not installed and used in accordance with the instructions, may cause harmful interference to radio communications. However, there is no guarantee that interference will not occur in a particular installation. If this equipment does cause harmful interference to radio or television reception, which can be determined by turning the equipment off and on, the user is encouraged to try to correct the interference by one of the following measures:

- Reorient or relocate the receiving antenna.
- Increase the separation between the equipment and receiver.
- Connect the equipment into an outlet on a circuit different from that to which the receiver is connected.
- Consult the dealer or an experienced radio/TV technician for help.

FCC Caution: Any changes or modifications not expressly approved by the party responsible for compliance could void the user's authority to operate this equipment.

This transmitter must not be co-located or operating in conjunction with any other antenna or transmitter.

FOR PORTABLE DEVICE USAGE

Radiation Exposure Statement:

The product comply with the FCC portable RF exposure limit set forth for an uncontrolled environment and are safe for intended operation as described in this manual. The further RF exposure reduction can be achieved if the product can be kept as far as possible from the user body or set the device to lower output power if such function is available.

FOR COUNTRY CODE SELECTION USAGE

Note: The country code selection is for non-US model only and is not available to all US model. Per FCC regulation, all WiFi product marketed in US must fixed to US operation channels only.

TM75A

Tablet Quick Guide

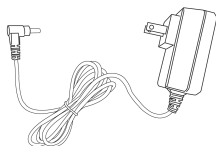
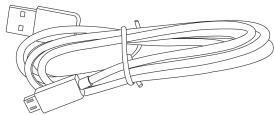
Thank you for choosing the Tablet TM75A. This portable device is designed to take advantage of micro-mobility and direct interaction through touch/pen input and wireless connectivity (Wi-Fi/Bluetooth) to provide distinct and different use experience for both study and entertainment.



Package Contents

Your package should contain the Tablet you purchased along with the following items. If anything is missing or appears to be damaged, please contact your vendor or agent.

- Quick Guide
- USB cable
- Power Adapter



NOTE:

The package contents above are for reference only. Please take the actual package items as standard.

Specification

Processor

- Intel® Atom™ processor Z2460 1.6GHz

LCD Display

- 7inch (16:9), 1024X600 TN LCD

Touch Panel

- 5-points capacitive touch panel

Storage

- 8/16GB eMMC Memory*

Input/ Output (I/O)

- 1 x TF/Micro SD card slot
- 1 x Mini HDMI type C
- 1 x DC-IN Jack
- 1 x MIC/Headphone Jack combo(American type)
- 1 x Micro USB2.0/OTG port without charging status(Type A/B)

System Memory

- 1 x LPDDR2, 1GB

TF/Micro SD Card

- Support 128M~32GB

WiFi/BT

- 802.11 b/g/n, 2.4 GHz antenna
- Bluetooth 2.1+ EDR

Camera

- 2 x cameras (Front: 0.3M, Rear: 2M)

Stereo Speaker

- 2 x internal stereo speakers

Battery

- 1 Cell, lithium polymer, 3.7V, 4100mAh
- Video play: 6 hours
- Music play: 10 hours
- Wi-Fi: 6 hours (with speaker)

Power Adapter

- Input: 100-240V ~ 50/60Hz 0.3A
- Output: 5V $\overline{\text{---}}$ 2A $\text{⊖} \text{---} \text{⊕}$

Tablet Weight

- 384g

Dimension

- 198.8 mm (W) X 130 mm (H) X 12 mm (D)



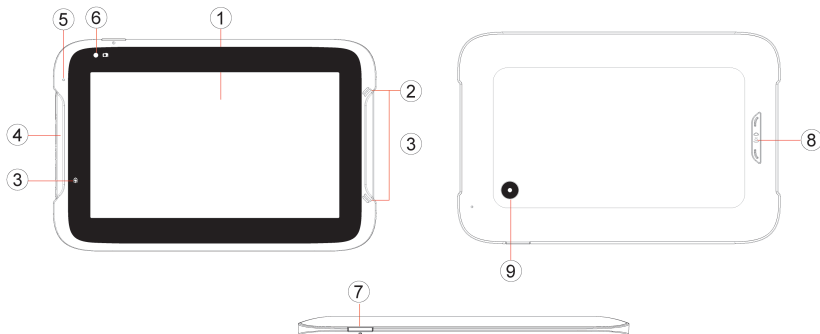
NOTE:

* The internal storage of the tablet is either 8 or 16GB, please take the actual products as the standard.

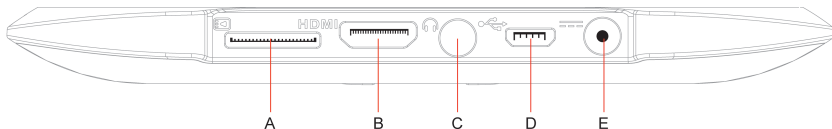
All specifications are subject to change without notice.

All rights reserved legal notices privacy and trademarks.

Interface Introduction




NO.	Item	NO.	Item
1	Touch Panel	6	Front Camera
2	Speakers	7	Power Button
3	Charging Indicator	8	Volume Up/Down Button
4	I/O	9	Back Camera
5	Front Microphone	--	--



NO.	Item	NO.	Item
A	TF/Micro SD Card Slot	D	Micro USB Port
B	Mini HDMI Port	E	DC-IN Jack
C	Headphone Jack	--	--

NOTE:

 Due to the CPU limitation, the DC-IN jack and Micro USB port cannot be used at the same time.

Turn On/Off the Tablet

Turn On the Tablet

Press and hold the Power button on the top left side of the tablet.

Turn Off the Tablet

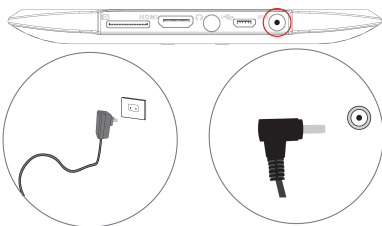
1. Press and hold the Power button until the options menu appears on the screen.
2. Tap OK on the Power Off option menu to turn off the tablet.

Charging the Battery

Before using your tablet for the first time, you must fully charge the battery.

Steps:

1. Insert the Power Adapter into a standard AC power outlet.
2. Connect the Power Adapter to your tablet.



Installing the Storage Card

You can choose the TF/micro SD cards in a wide range of capacities, varying from 128M to 32GB.

Install TF/Micro SD Card

1. Turn off the tablet
2. Locate the slot for the TF/micro SD card
3. Insert the TF/micro SD card gently

Remove TF/Micro SD Card

1. Turn off the tablet or Tape (Menu>Settings>Storage>Unmount SD card)
2. Push the TF/micro SD card to eject from the slot
3. Pull out the TF/micro SD card



FRONT



BACK



Note:

Please insert the TF/micro SD card in the correct direction. Insert in incorrect direction may result in the damages for both tablet and the TF/micro SD card.