

Quick StartGuide
For Android Tablet
TC80RA1

Federal Communication Commission Interference Statement

This equipment has been tested and found to comply with the limits for a Class B digital device, pursuant to Part 15 of the FCC Rules. These limits are designed to provide reasonable protection against harmful interference in a residential installation. This equipment generates, uses and can radiate radio frequency energy and, if not installed and used in accordance with the instructions, may cause harmful interference to radio communications. However, there is no guarantee that interference will not occur in a particular installation. If this equipment does cause harmful interference to radio or television reception, which can be determined by turning the equipment off and on, the user is encouraged to try to correct the interference by one of the following measures:

- Reorient or relocate the receiving antenna.
- Increase the separation between the equipment and receiver.
- Connect the equipment into an outlet on a circuit different from that to which the receiver is connected.
- Consult the dealer or an experienced radio/TV technician for help.

Caution:

Any changes or modifications not expressly approved by the party responsible for compliance could void the user's authority to operate this equipment.

This device complies with Part 15 of the FCC Rules. Operation is subject to the following two conditions:

- (1) This device may not cause harmful interference, and
- (2) This device must accept any interference received, including interference that may cause undesired operation

RF Exposure Information (SAR)

This device meets the government's requirements for exposure to radio waves. This device is designed and manufactured not to exceed the emission limits for exposure to radio frequency (RF) energy set by the Federal Communications Commission of the U.S. Government.

The exposure standard employs a unit of measurement known as the Specific Absorption Rate, or SAR. The SAR limit set by the FCC is 1.6 W/kg. Tests for SAR are conducted using standard operating positions accepted by the FCC with the EUT transmitting at the specified power level in different channels.

The highest SAR value for the device as reported to the FCC is 1.46 W/kg when placed next to the body.



This symbol indicates this Tablet PC complies with the Directive 2004/108/EC, 1999/5/EC and the European Union's Low Voltage Directive 2006/95/EC.

BATTERY CAUTION

- ※ Risk of explosion if the battery is replaced with an incorrect type one.
- ※ Dispose of used batteries according to the instructions.
- ※ Only use batteries designed for this computer. The wrong battery type may explode, leak or damage the computer.
- ※ Do not remove any batteries from the computer while it is powered on.
- ※ Recharge the batteries using the Tablet PC system. Incorrect recharging may make the battery explode.

- ※ Do not try to repair a battery pack. Refer any battery pack repair or replacement to your service representative or qualified service personnel.



To prevent possible hearing damage, do not listen at high volume levels for long periods.

Package contents

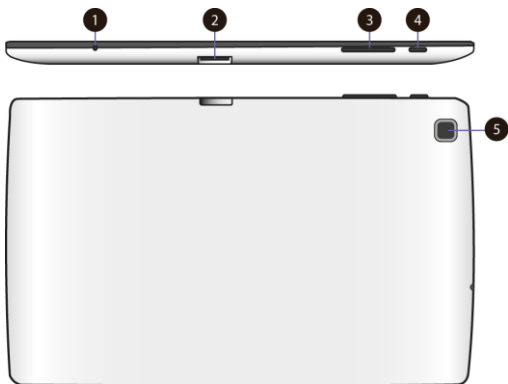
Carefully unpack your box and take out the items listed below. If any of the items are missing or damaged, please contact your dealer immediately:

- One tablet
- One AC adapter
- One USB cable
- This guide

Tablet layout



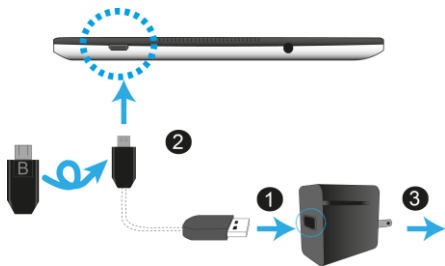
No.	Name	No.	Name
1	Touchscreen	4	Micro USB DC IN / Micro USB port
2	Front facing camera	5	Headphone jack
3	Speaker		



No.	Name	No.	Name
1	Microphone	4	Power button
2	Micro SD card slot	5	Rear facing camera
3	Volume up/down		

Charging your tablet

If your tablet is just being unpacked from the box, you need to charge the tablet first. It will take around 4 to 5 hours to be fully charged.

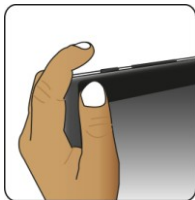


1. Plug the USB head of the cable into the adapter.
2. Plug the micro-USB head of the cable- *with the side marked with "B" or an icon facing down* - into the micro-USB port on your tablet.
3. Plug the adapter into a wall-socket.

Powering ON/OFF your tablet

To power on your tablet

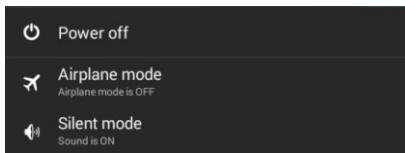
Press and hold the power button down until the screen turn on.



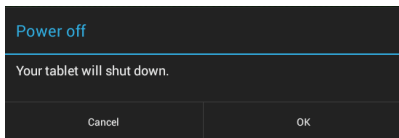
To power off your tablet

To turn off your tablet, follow these steps:

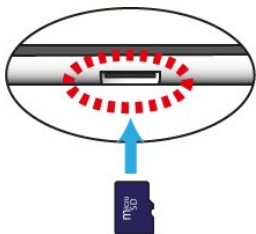
1. Press and hold the Power Lock button.
2. The Power-off menu appears as shown below. Touch Power off.



3. Touch OK to power down your tablet.



Inserting a storage card



Your tablet supports micro-SD cards with maximum storage space up to 32G. You can insert the micro SD card and pull it out without powering down the tablet. To do so, follow the steps below.

Install your Micro SD Card

1. Hold your tablet with front side up.
You can find the micro SD card slot on the same side with the power button. (For detail, see page 4)
2. Insert your micro SD card in the direction as shown.

Remove your Micro SD Card

1. Push and release the micro SD card. This will unlock the card.
2. Pull out the micro SD card.

Specifications

Processor	<ul style="list-style-type: none">● Intel® Bay Trail-T Z3735G● Base 1.33 GHz, Burst to 1.83GHz● 2MB L2 Cache
Memory	<ul style="list-style-type: none">● DDR3L- 1333● Default1 GB
Storage	<ul style="list-style-type: none">● eMMC v4.4.1● Default: 8GB (for KK 4.4), up to 16GB (for Win8.1)
Wireless	<ul style="list-style-type: none">● Wi-Fi 802.11 b/g/n● Bluetooth 4.0
Touchscreen	<ul style="list-style-type: none">● 8-inch 1280 x 800IPS● 5-point multi-touch● Capacitive pen support
Cameras	<ul style="list-style-type: none">● Front: 0.3M● Rear: 2.0M
Battery	<ul style="list-style-type: none">● 1Cell , 1S1P● Li-polymer● 3900mAh
Input/Output	<ul style="list-style-type: none">● 1 x micro-USB 2.0 OTG port (Type B)● 1 x Mic/head phone jack combo● 1 x micro-SD card slot(32G max)● 1 x MIC

Speaker& Mic	<ul style="list-style-type: none"> ● Build-in Speaker x 2 ● Analog MIC x 1
AC-Adapter	<ul style="list-style-type: none"> ● DC Output: 5V/2A ● Input Voltage: 100 ~ 240VAC ● Input Frequency: 47 ~ 63Hz
Dimension (mm)	<ul style="list-style-type: none"> ● 213 (W) x 129 (H) x 10 (D)
Weight	<ul style="list-style-type: none"> ● 0.34kg (w/o adapter)