

The image shows the front cover of a technical manual. The cover has a blue background with white and red wavy borders at the top and bottom. The text is centered and written in a white, bold, sans-serif font.

TC69CA

Motherboard Guide

FEDERAL COMMUNICATIONS COMMISSION INTERFERENCE STATEMENT

This equipment has been tested and found to comply with the limits for a Class B digital device, pursuant to part 15 of the FCC Rules. These limits are designed to provide reasonable protection against harmful interference in a residential installation. This equipment generates, uses and can radiate radio frequency energy and, if not installed and used in accordance with the instructions, may cause harmful interference to radio communications. However, there is no guarantee that interference will not occur in a particular installation. If this equipment does cause harmful interference to radio or television reception, which can be determined by turning the equipment off and on, the user is encouraged to try to correct the interference by one or more of the following measures:

- Reorient or relocate the receiving antenna.
- Increase the separation between the equipment and receiver.
- Connect the equipment into an outlet on a circuit different from that to which the receiver is connected.

Any changes or modifications not expressly approved by the party responsible for

End Product Labeling

This transmitter module is authorized only for use in device where the antenna may be installed such that 20cm may be maintained between the antenna and users. The final end product must be labeled in a visible area with the following: "Contains FCC ID: WL6-TC6BC30CA1"

Notice:

This device complies with Part 15 of the FCC Rules. Operation is subject to the following two conditions: (1) this device may not cause harmful interference and (2) this device must accept any interference received, including interference that may cause undesired operation.

Notice:

This Transmitter must not be co - located or operating in conjunction with any other antenna or transmitter.

This equipment complies with FCC RF radiation exposure limits set forth for an uncontrolled environment. This equipment should be installed and operated with a minimum distance of 20 centimeters between the radiator and your

body.

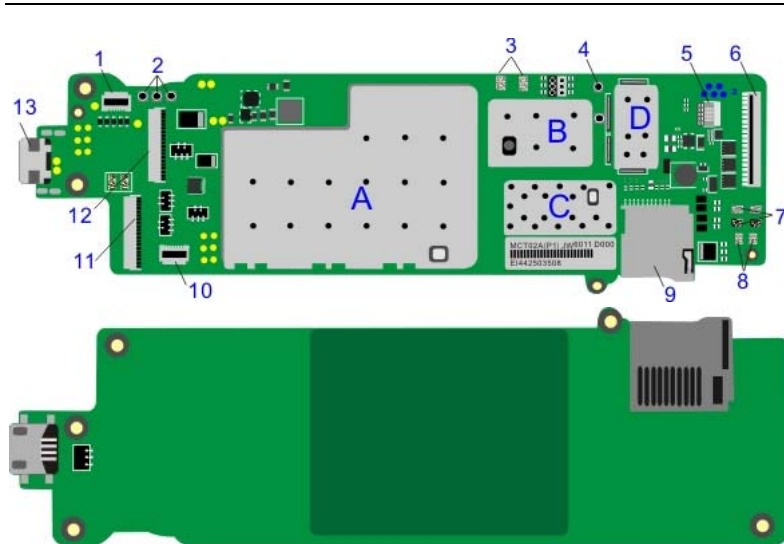
Information for the OEMs and Integrators

The following statement must be included with all versions of this document supplied to an OEM or integrator, but should not be distributed to the end user.

- 1) This device is intended for OEM integrators only.
- 2) Please see the full Grant of Equipment document for other restrictions.

This radio transmitter FCC ID: WL6-TC6BC30CA1

has been approved by FCC to operate with the antenna types listed below with the maximum permissible gain and required antenna impedance for each antenna type indicated. Antenna types not included in this list, having a gain greater than the maximum gain indicated for that type, are strictly prohibited for use with this device.



Connectors and Pads

1	Audio FPC Connector
2	Battery Pad
3	WiFi/BT/GPS Antenna Pad
4	RF Test Connector
5	TP Connector

6	LCD Connector
7	Speaker Pad
8	Mic Pad
9	T-flash Card Connector
10	Side Key Connectors
11	Bear Camera Connector
12	Front Camera Connector
13	Micro USB Connector

Main components

A	CPU+PMIC+DDR+EMMC
B	WiFi/BT
C	CODEC
D	GPS

. Antenna Specification

Type	PIFA
Trade name	Innetech
Model	13H130-JX9070

gain	2.85 dBi
-------------	----------