

2.3 OUT Photographs



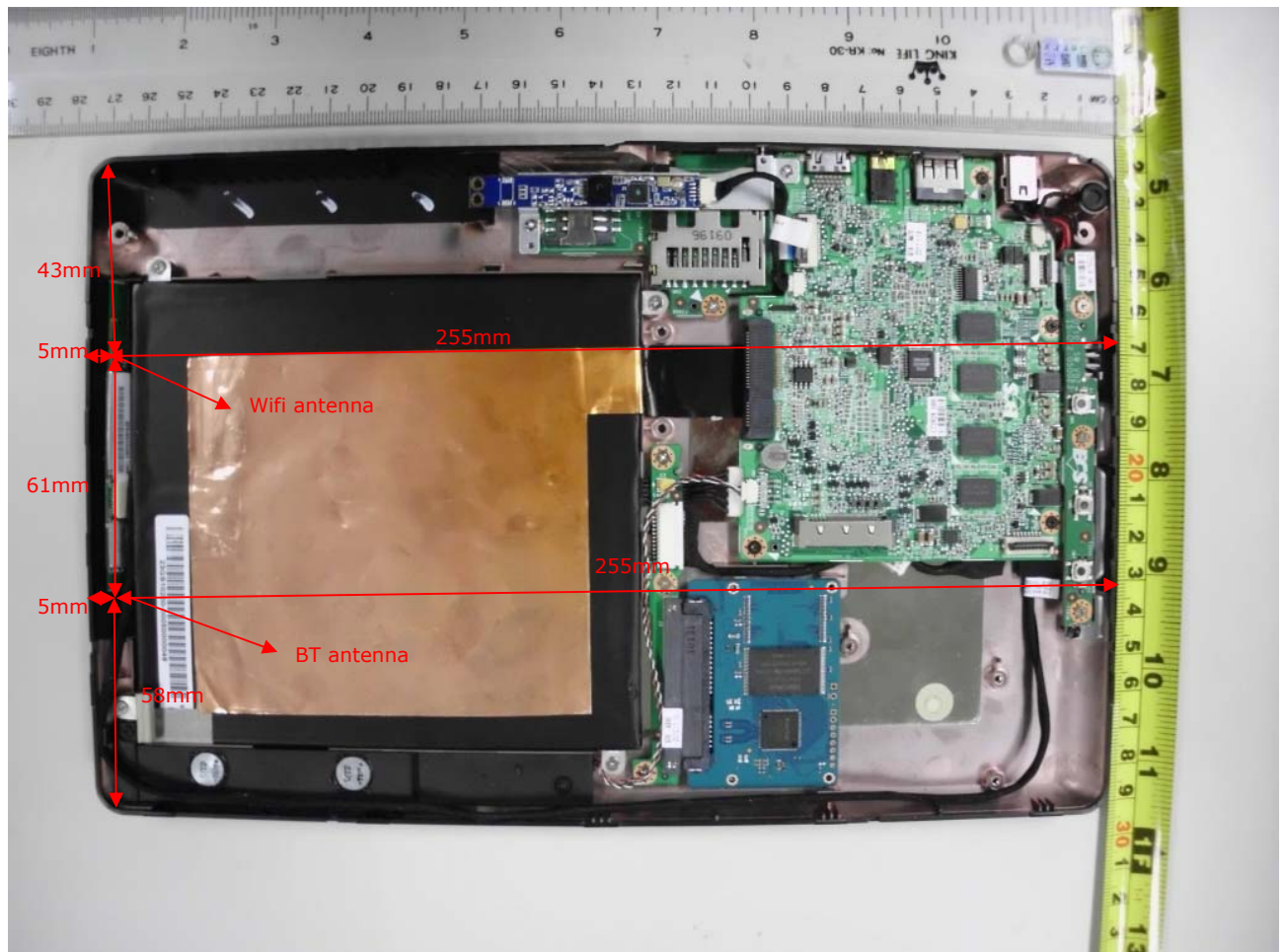


5.10 Antenna Separation

According to FCC KDB 447498 section 4 requirements:

- 1) and the separation of the Wifi and BT antenna is 61mm, large than 50mm, as specified in the documents.
- 2) The sum of the 1-g SAR is $< 1.6 \text{ W/kg}$ for all of all simultaneous transmitting antennas that require stand-alone SAR evaluation.
- 3) the conducted power of Bluetooth is is 3.56 mW less than $60/f(\text{GHz})$, so the stand-alone SAR for BT is not required

So the SAR is not required for the simultaneous transmission.

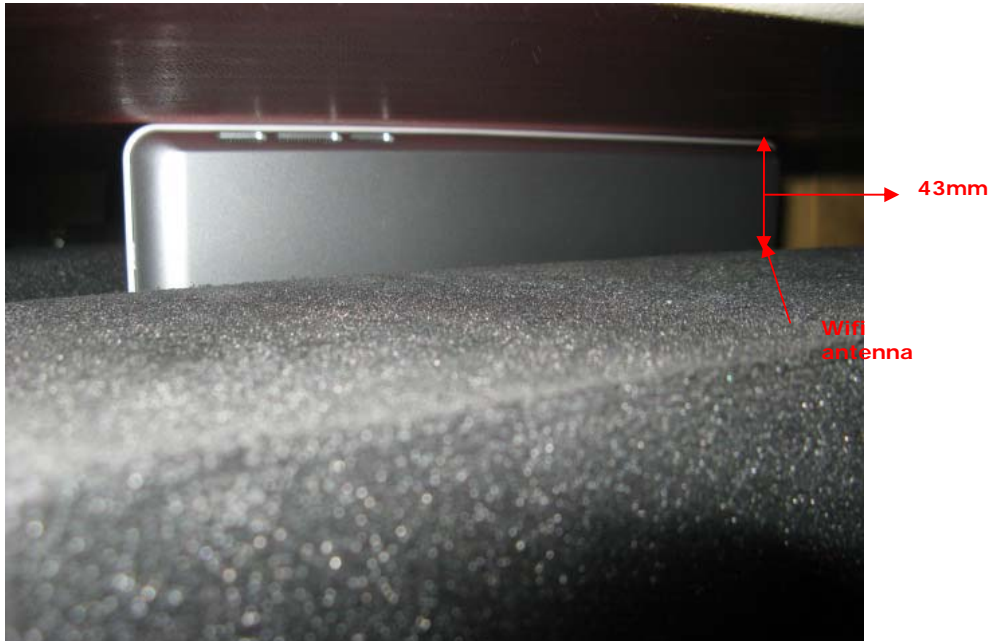


5.5 Test positions for device under test

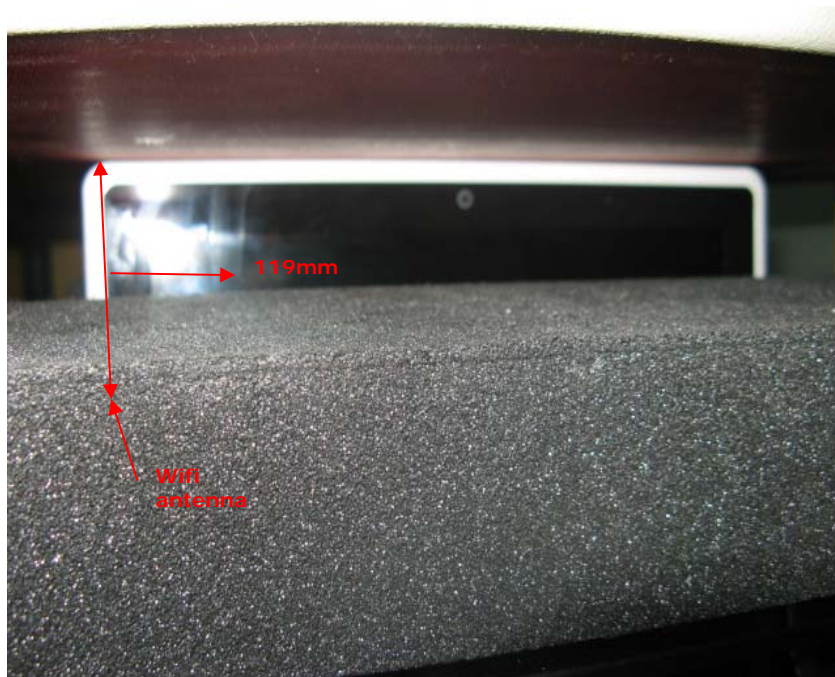
Position 1 :Back side



Position 2 :Bottom side



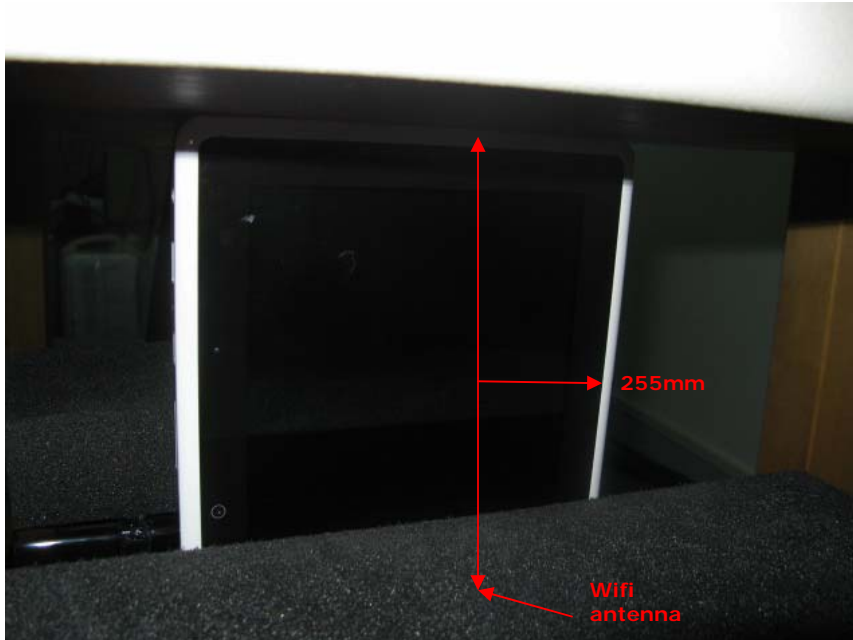
Position 3 :Top side



Position4 :Left side



Position5 :Right side



According to KDB 447498 4)ii)(2)SAR is required only for the edge with the most conservative exposure condition. No SAR at this position.