

*** USER'S MANUAL ***

FCC ID : WKMLAPTOPPROKB

The Federal Communication Commission Statement

This equipment has been tested and found to comply with the limits for a Class B Digital Device, pursuant to Part 15 of the FCC rules. These limits are designed to provide reasonable protection against harmful interference in a residential installation. This equipment generates, uses and can radiate radio frequency energy and, if not installed and used in accordance with the instruction, may cause harmful interference to radio communication. However, there is no guarantee that interference will not occur in a particular installation. If this equipment does cause harmful interference to radio or television reception, which can be determined by turning the equipment off and on, the user is encouraged to try to correct the interference by one of more of the following measures: -

- **Reorient or relocate the receiving antenna.**
- **Increase the separation between the equipment and receiver.**
- **Connect the equipment into an outlet on a circuit different from that to which the receiver is connected.**
- **Consult the dealer or an experienced Radio/TV technician for help.**

Use only shielded cables to connect I/O devices to this equipment. You are cautioned that change or modifications not expressly approved by the party responsible for compliance could void your authority to operate the equipment.

THIS DEVICE COMPLIES WITH PART 15 OF FCC RULES. OPERATION IS SUBJECT TO THE FOLLOWING TWO CONDITIONS:

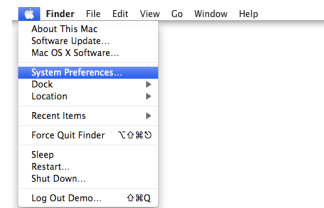
- 1 This device may not cause harmful interference and
- 2 This device must accept any interference received, including interference that may cause undesired operation.

The antenna used for this transmitter must not be collocated or operation in conjunction with any other antenna or transmitter.

Notice : The changes or modifications not expressly approved by the party responsible for compliance could void the user's authority to operate the equipment.

IMPORTANT NOTE: To comply with the FCC RF exposure compliance requirements, no change to the antenna or the device is permitted. Any change to the antenna or the device could result in the device exceeding the RF exposure requirements and void user's authority to operate the device.

Open **System
Preferences.**



This window
will appear:



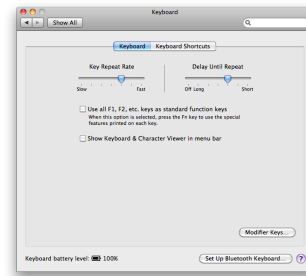
Mac OS X 10.6
or newer:
Click on
Keyboard and
proceed to [page
3.](#)



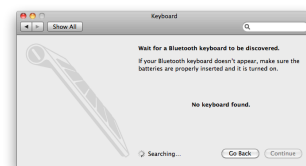
Mac OS X 10.5
or older:
Click on
**Keyboard &
Mouse** and
proceed to [page
6](#).



Click on **Set Up Bluetooth Keyboard...**



This window
will appear:

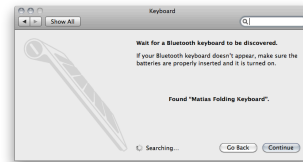


Hold down the
**on/
off button (1)**

until you see
the
**blue light (2)
flashing**

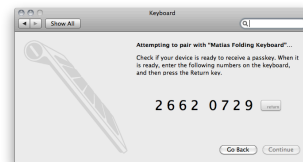


After the
keyboard
appears in the
window, click
Continue.



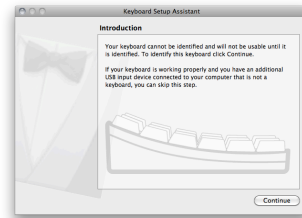
Type the
number **shown**
on your screen
using the
keyboard,

and then press
the **Return** key
on the
keyboard.



If the following window appears, click **Continue** and proceed to [page 10](#).

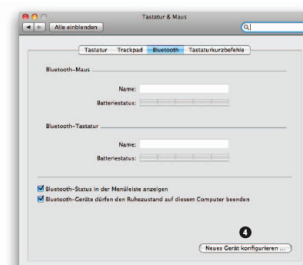
If this window does **NOT** appear, then proceed to [page 12](#).



Click on
Bluetooth.



Click on **Set
Up New
Device...**



Hold down the
**on/
off button (1)**

until you see
the
**blue light (2)
flashing**



Click
Continue.



Click
Keyboard.
Click **Continue**



After the
keyboard
appears in the
list, click
Continue.



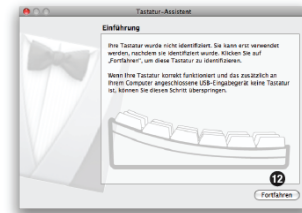
Type the
number **shown**
on your screen
using the
keyboard,

and then press
the **Return** key
on the
keyboard.



If the following window appears, click **Continue** and proceed to [page 10](#).

If this window does **NOT** appear, then proceed to [page 12](#).



Read window
instructions, then press
the key on the
keyboard, as
requested.

Another instruction
may follow, requesting
another key press.
Press key as requested.



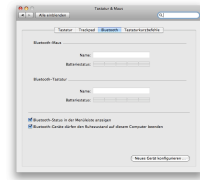
Click on **ANSI**.
Click on **Done**.



Click **Quit**.



Click on the red button
to close the window.

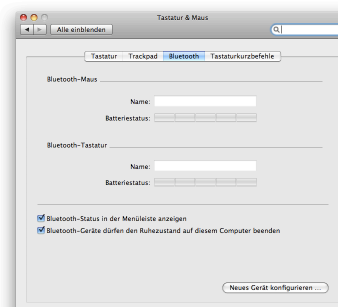


Setup is complete.

Click **Quit**.



Click on the
red button to
close the
window.



**Setup is
complete.**