

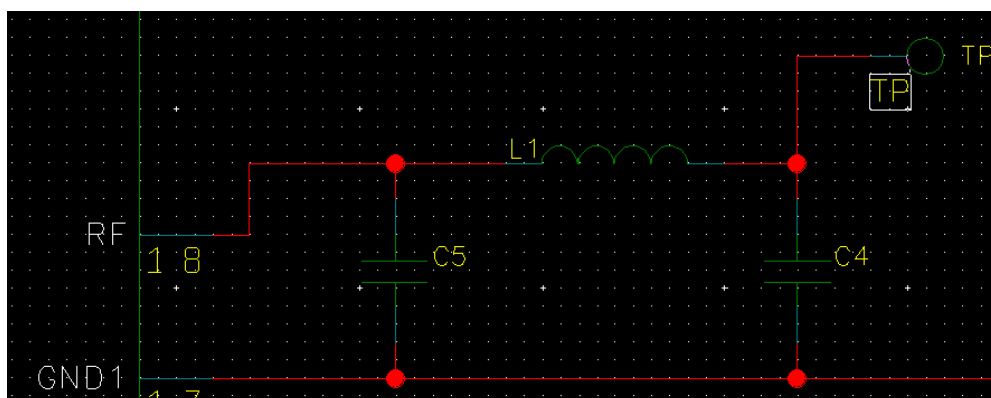
AlertMe Range Extender (WJHRP11)

FCC Class II Permissive Change

This document describes the changes to the Z-Wave (908.42MHz) antenna tuning components

Declaration of Change

Changing the matching components to the antenna has been done for the sole purpose of improving the range of the product.



Existing Tuning Components:

L1 – 2.2pF Capacitor Murata GJM1555C1H2R2BB01D

C4 – 5.6pF Capacitor Murata GJM1555C1H5R6BB01D

C5 – No component fitted

New Tuning Components:

L1 – 18nH Inductor Murata LQP15MN18NG02J

C4 – No component fitted

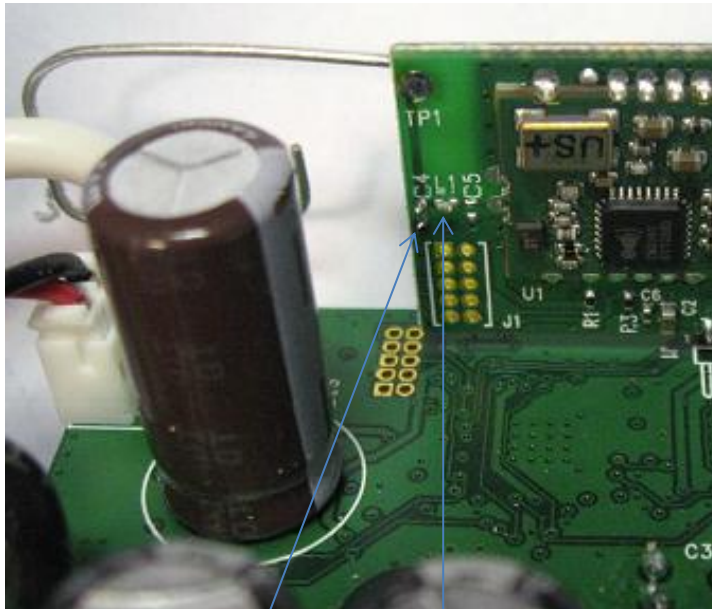
C5 – No component fitted

There has been NO change to the output power setting of the Z-wave circuitry. This remains at 0.5dBm.



creating smart homes

Visual Difference between Units



C4 5.6pF Capacitor and L1 2.2pF Capacitor fitted

Figure 1 FCC Cert Package: 'Internal Photos' 06/04/12

C4: Do Not Place



L1: Change to 18nH

Figure 2 Enhanced Antenna Tuning

30 Station Road, Cambridge CB1 2RE

T +44 (0) 1223 222 150 F +44 (0) 1223 361 557 W alertme.com

Registered in England & Wales AlertMe.com Ltd Registered No. 5782908. VAT No. GB 895 9914 42



By:

Matt Lawrence

Date: 9th November 2012

Title: Hardware Design Engineer

On behalf of: Alertme.com Ltd

Telephone: +44 1223 222178