

Type/ Model Name : WL1837MOD

Product Description : Wireless LAN and Bluetooth combo

Applicant : Kathrein Sachsen GmbH

Address : Lindenstrasse 3
09241 Muehlau

Manufacturer : Kathrein Sachsen GmbH

Address : Lindenstrasse 3
09241 Muehlau

License Holder : Kathrein Sachsen GmbH

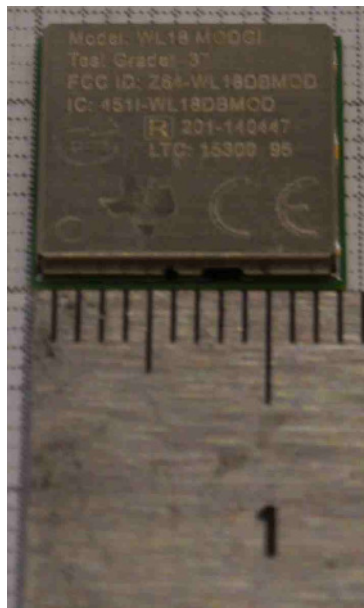
Address : Lindenstrasse 3
09241 Muehlau

1	EXTERNAL VIEWS	3
1.1	TOP VIEW DETAIL OF THE MODULE MOUNTED ON PCB.....	3
1.2	BOTTOM VIEW DETAIL OF THE PCB WITH MOUNTED MODULE.....	4
1.3	LOCATION OF MODULE ON MAIN PCB TOP (I.E. ARU3560)	5
1.4	LOCATION OF MODULE ON MAIN PCB BOTTOM (I.E. ARU3560)	5

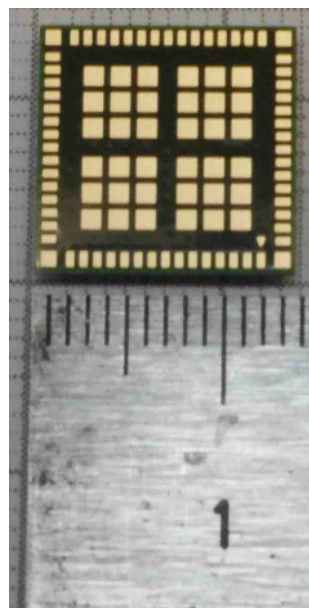
1 External Views

The following pictures show the external views from the module itself, a detail mounted on the pcb and the overall placement on the pcb. The module is highlighted in a yellow frame.

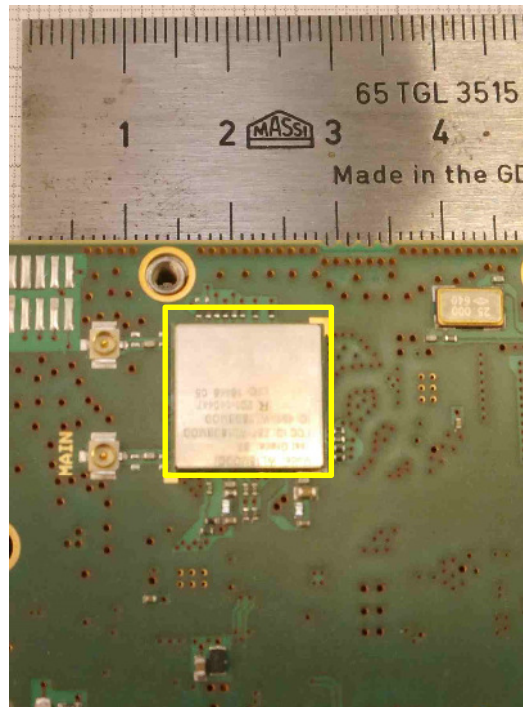
1.1 Module Top



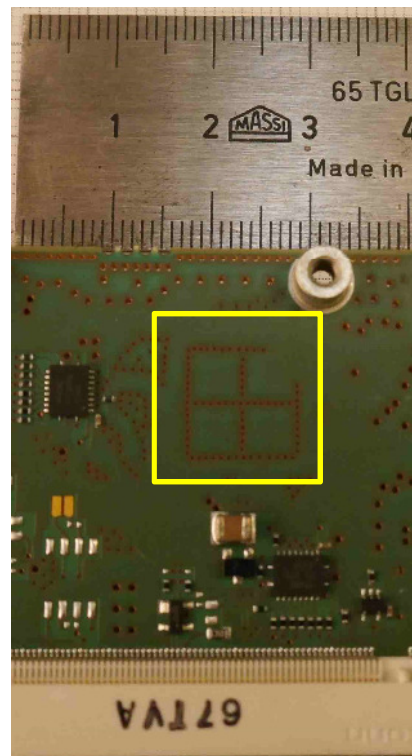
1.2 Module Bottom



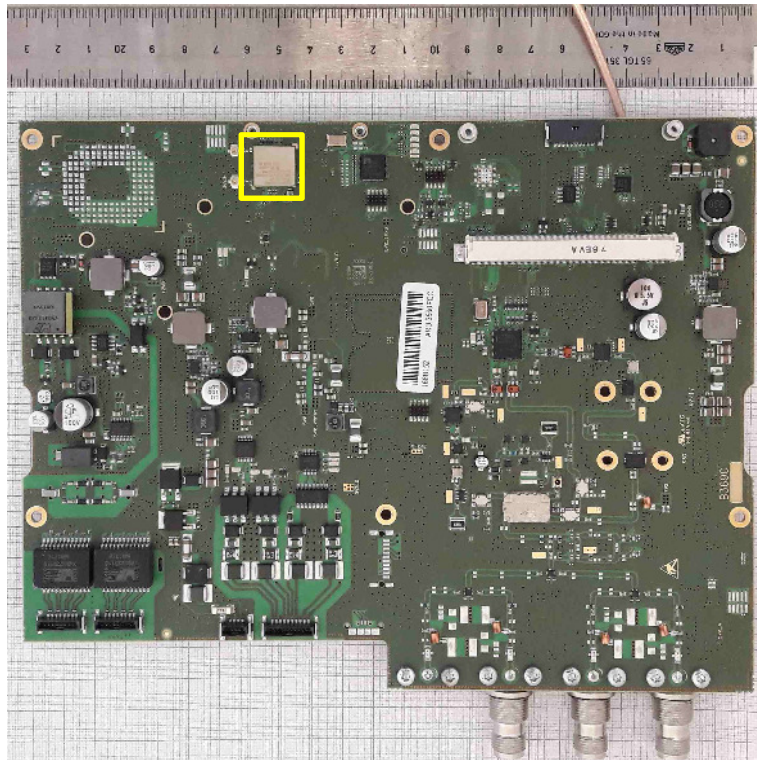
1.3 Top View Detail of the module mounted on PCB



1.4 Bottom view Detail of the PCB with mounted module



1.5 Location of module on main PCB top (i.e. ARU3560)



1.6 Location of module on main PCB bottom (i.e. ARU3560)

