

Type/ Model Name : RRU 4560 Reader Unit

Product Description : UHF RFID Reader 902 – 928MHz

Applicant : Kathrein Sachsen GmbH

Address : Lindenstrasse 3
09241 Muehlau

Manufacturer : Kathrein Sachsen GmbH

Address : Lindenstrasse 3
09241 Muehlau

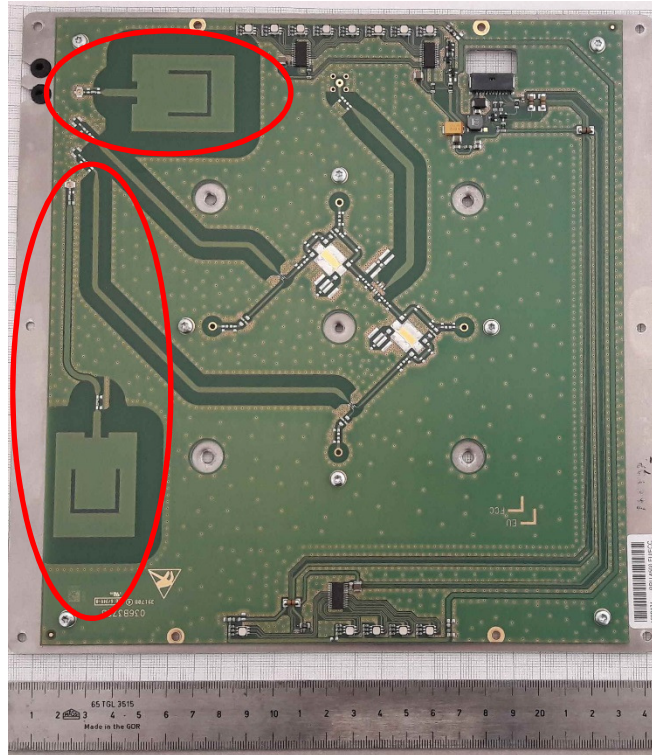
License Holder : Kathrein Sachsen GmbH

Address : Lindenstrasse 3
09241 Muehlau

1	INTERNAL VIEWS	3
1.1	ANTENNA TOP VIEW.....	3
1.2	ANTENNA BOTTOM VIEW	4
1.3	MAIN PCB TOP VIEW	4
1.4	MAIN PCB TOP VIEW (WITHOUT CONTROLLER).....	5
1.5	MAIN PCB BOTTOM VIEW	6
1.6	MAIN PCB BOTTOM VIEW (WITHOUT SHIELDING).....	6
1.7	RFID CONTROLLER TOP VIEW	7
1.8	RFID CONTROLLER BOTTOM VIEW	7
1.9	ETHERNET CONNECTOR CARRIER TOP VIEW.....	8
1.10	ETHERNET CONNECTOR CARRIER BOTTOM VIEW.....	9
1.11	POWER AND GPIO CONNECTOR CARRIER TOP VIEW.....	10
1.12	POWER AND GPIO CONNECTOR CARRIER BOTTOM VIEW	10

1 Internal Views

1.1 Antenna Top View



Red marked are the 2 wifi patches with connectors that are connected to the wifi module on main pcb.

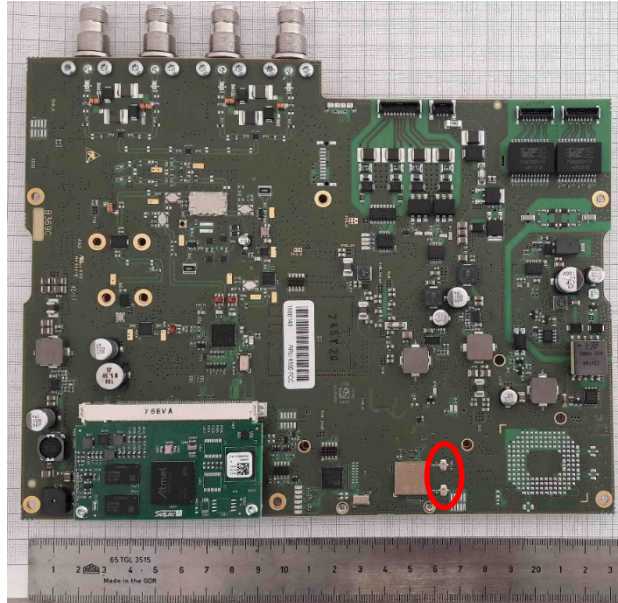
1.2 Antenna Bottom View



1.3 Internal View with mounted PCB

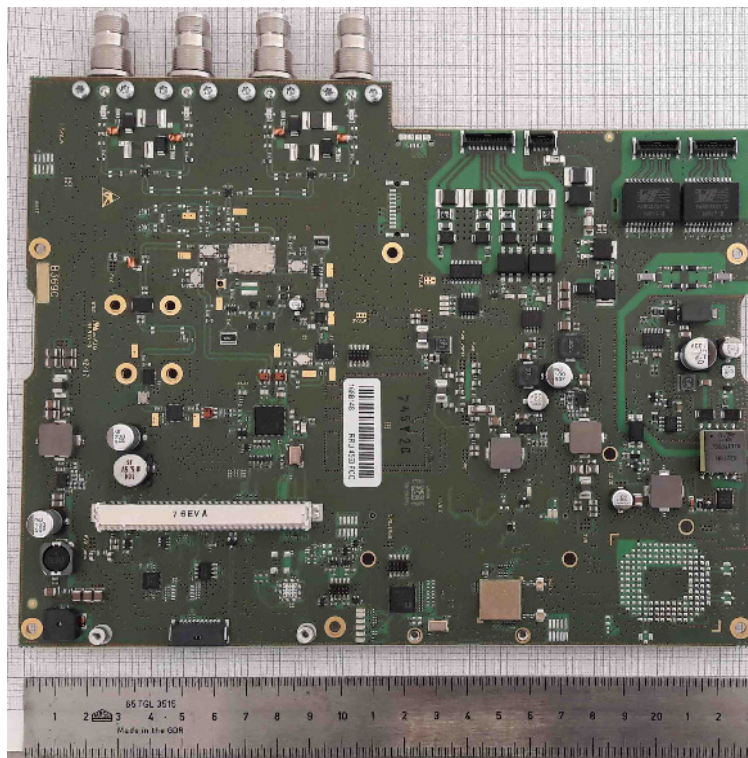


1.4 Main PCB Top View

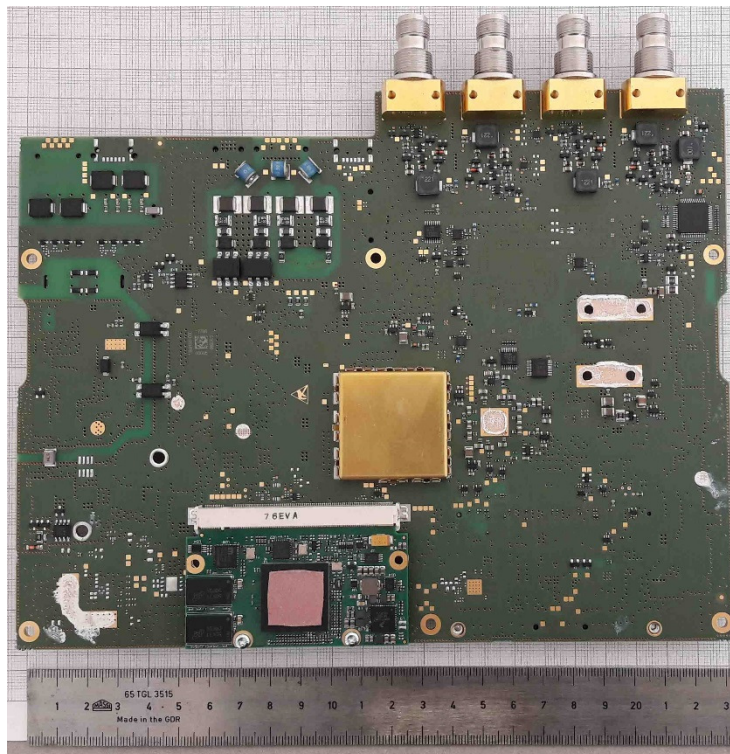


Red marked are the 2 wifi u.FL connectors to be connected to the wifi antenna patches.

1.5 Main PCB Top View (without controller)

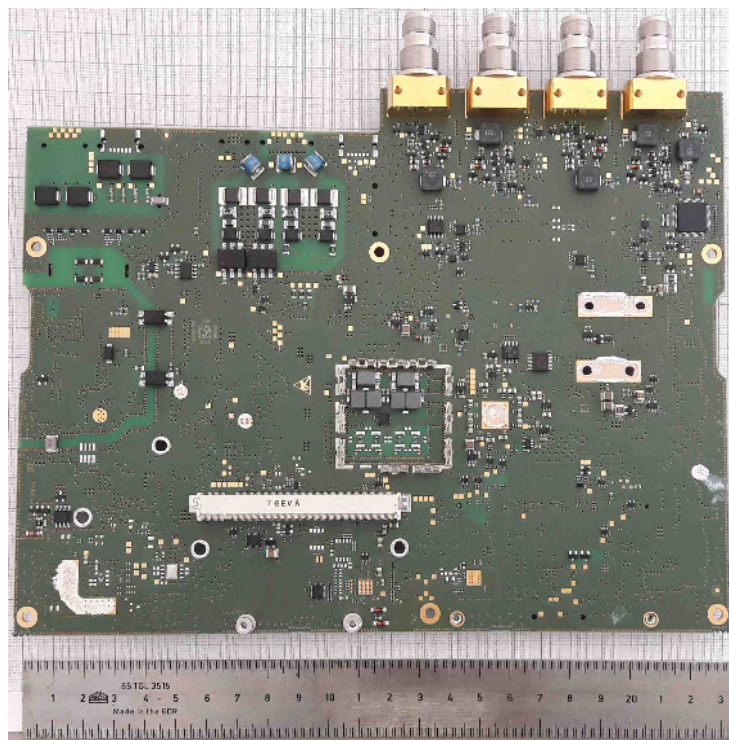


1.6 Main PCB Bottom View



1.7

1.8 Main PCB Bottom View (without shielding)



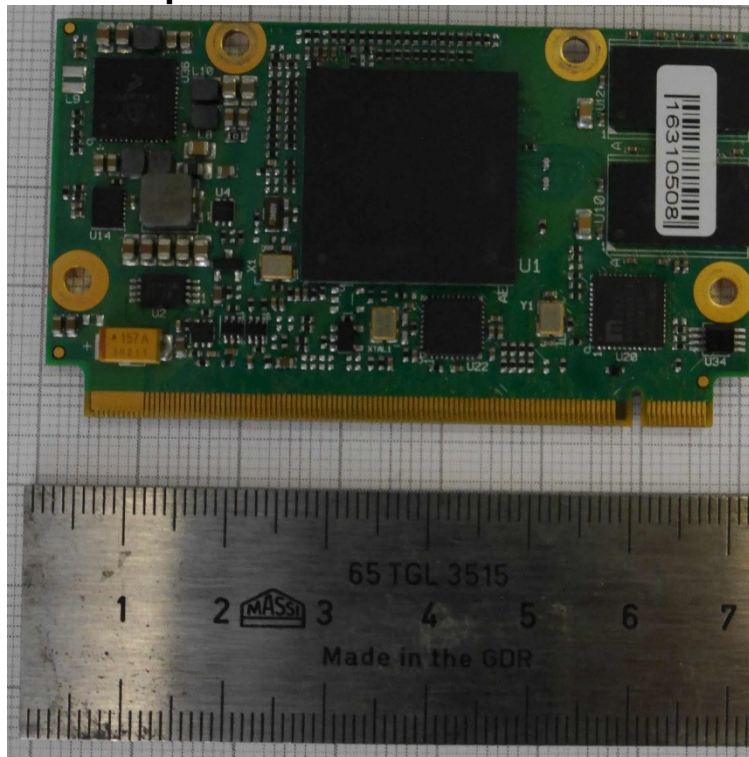
1.9 RFID Controller Top View



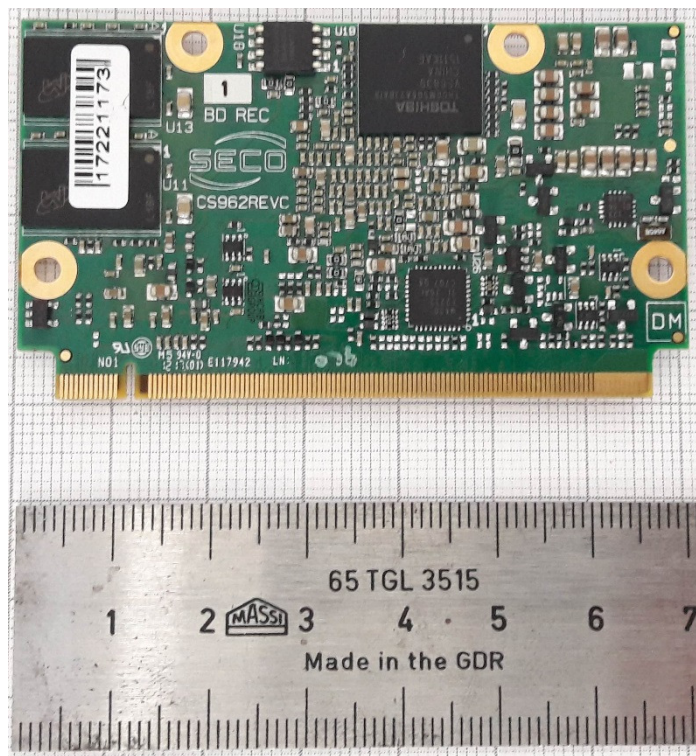
1.10 RFID Controller Bottom View



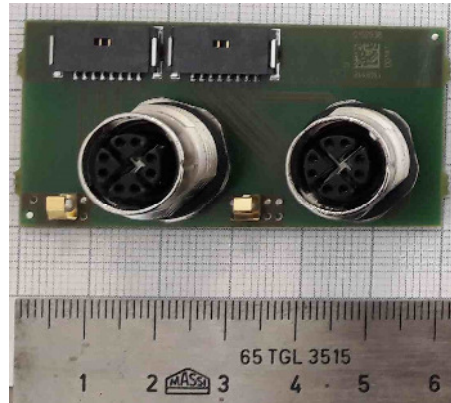
1.11 Embedded PC Top



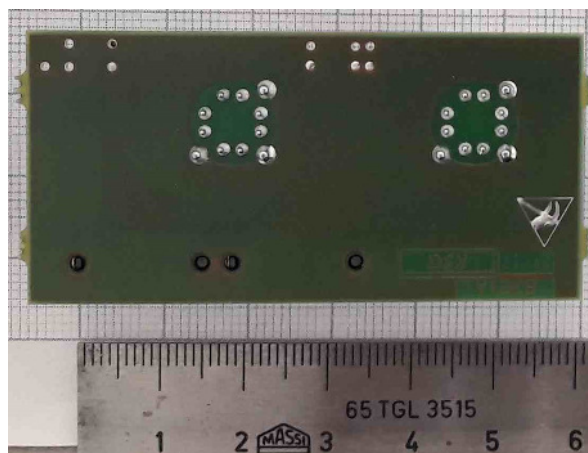
1.12 Embedded PC Bottom



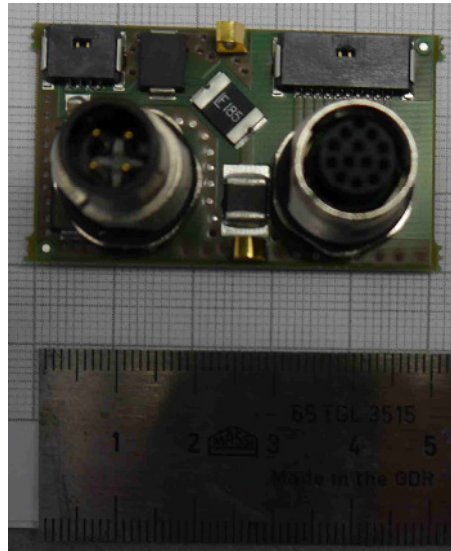
1.13 Ethernet Connector Carrier Top View



1.14 Ethernet Connector Carrier Bottom View



1.15 Power and GPIO Connector Carrier Top View



1.16 Power and GPIO Connector Carrier Bottom View

