

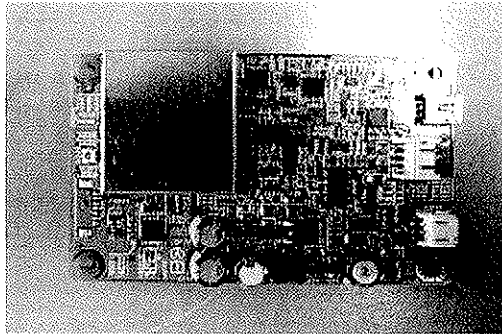
FCC ID : WJ6-ICM0M001A-M
Model : ICM0M0
Applicant : NIDEC SANKYO CORPORATION

Request for Modular Approval

RFID Module (Model: ICM0M0) is designed by NIDEC SANKYO CORPORATION.
This RFID Module can be equipped on any type of device, if the distance between the radiator and person's body keep at least 20cm or more. The modular transmitter complies the module basic requirement (Item 1 to 8) in FCC Part 15 Subpart C Section 15.212 as indicated below:

[Module basic requirement]

(1) Have its own RF shielding.: This modular transmitter has it own RF shielding. Please refer to the A1 Photo.



A1 Photo

- (2) The modular transmitter must have buffered modulation/data inputs.: Data input to the modular transmitter is controlled as not generating excessive data speed and abnormal modulation.
- (3) The modular transmitter must have its own power supply regulation.: The RFID transmitter has a regulator which regulates the supplies voltage of DC 24V to DC 3.3V and DC5.0V. Therefore, the equipment complies power supply regulation.
- (4) The modular transmitter must comply with the antenna requirements of Section 15.203 and 15.204(c): The EUT has a unique coupling/antenna connector (U.FL). Therefore the equipment complies with the requirement of 15.203/212.
- (5) The modular transmitter must be tested in a stand alone.: The modular transmitter has been performed the testing as a stand alone and then confirmed the compliance. Please refer to the Test report. [Test Report No.: 30DE0267-YK-01-R1]
- (6) The modular transmitter must be labeled with its own FCC ID and, if the FCC ID is not visible when the module is installed inside another device, then the outside of the device into which the module is installed must also display a label referring to the enclosed module.: This modular transmitter is complied with this requirement. Please refer to the file of Label drawing and location.
- (7) The modular transmitter must comply with any specific rule or operating requirements applicable to the transmitter and the manufacturer must provide adequate instructions along with the module to explain any such requirements.: The necessary explanation to be complied with this requirement is contained in the manual.
- (8) The modular transmitter must comply with any applicable RF exposure requirements.: The modular transmitter accommodate with FCC Rules 15.225. So we consider this modular transmitter complies with FCC radiation exposure requirement.

Junro Takeuchi

Junro Takeuchi
Engineer