

READ FIRST!

**WIRELESS TV HEADPHONE SET**

Model No.: BTHS-AS50

User Manual	EN
Bedienungsanleitung	DE
Mode d'emploi	FR
Manuale di Istruzioni	IT
Manual de Usuario	ES

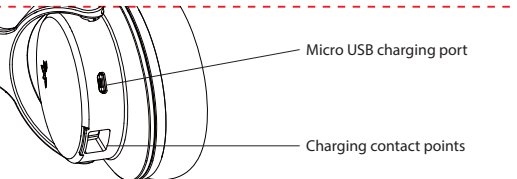
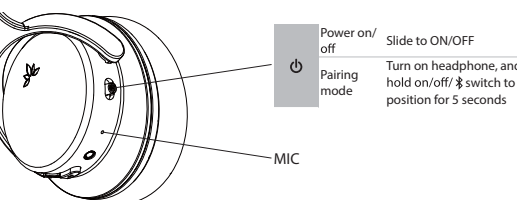
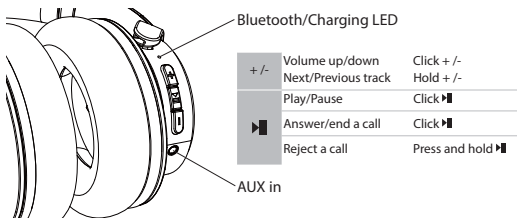
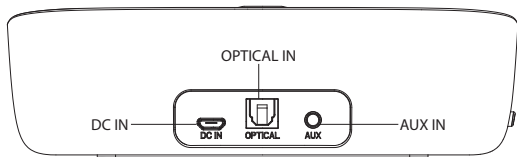
**IMPORTANT NOTICE**



\*Please watch **step-by-step video tutorial** from <https://avantree.com/ht5150/video> before installation.



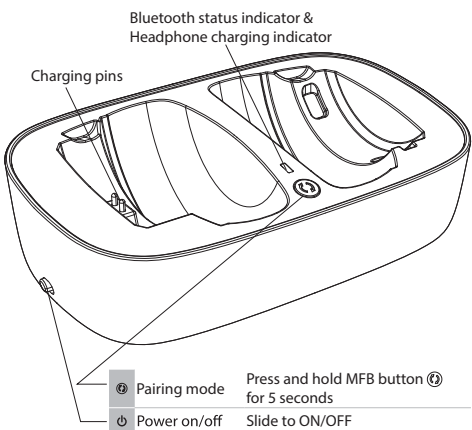
Support.avantree.com



**What's in the box?**



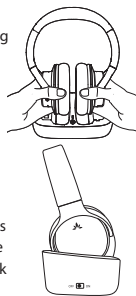
**Product Overview & Basic Operation**



**Headphone Charging**

**Option 1** – Using the transmitter dock for recharging after each use.

- Hold BOTH sides of the headphones when placing into charging dock.
- Headphones should be placed angled back slightly and NOT vertically to charge.
- LED light on the transmitter dock lights up **RED** during charging, if not, it means the headphone is not correctly placed into the charging dock. Once charging is complete, the LED on transmitter dock will turn solid **GREEN**.



**Option 2** - Using a phone charger (5V/500mA-2A output), PC USB port, TV USB port or any other USB outlet using the included USB cable. Charging indicator on headphone lights up **RED** during charging and turn off once charging is complete.

**English User Guide**

**Turn on & connect the transmitter and headphone**

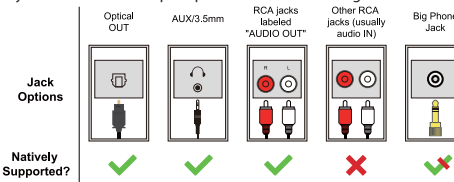
**1. Powering up transmitter**  
Connect the transmitter to a power source. The power source can be either a TV USB port (TV must be ON to provide power) or any 5V/500mA-2A rated USB charger.

**2. Turn on the transmitter and the headphone**  
**Turn on the transmitter** - Slide the power switch to ON, the LED indicator will light up **BLUE** and start flashing quickly.  
**Turn on the headphone** - Slide the power switch on the headphone to ON. The LED indicator will start flashing **RED** and **BLUE** alternately. Now, keep the transmitter and headphone close and wait for connection. Once connected, LED on both the devices will turn **SOLID BLUE**.

The headphone automatically turns on/off when taken out of/placed back into the charging dock. For next use, simply take the headphone out of the charging dock, it'll automatically reconnect to the transmitter.

**Connect transmitter to your TV/audio source**

Check your audio source output options before connecting



**If your TV has Digital Optical Out**

Please use the Optical cable to connect the transmitter to TV. Ensure your TV's Sound Out/Speaker setting is set to "External Speaker" or "Optical audio out", e.g.: Samsung > Audio Out/Optical; LG > Optical Out. Various on other TV brands. Ensure your TV's Audio Format/Digital Sound Out setting is set to "PCM" or set the Dolby/DTS Digital setting to "OFF". Now you can stream audio from your TV.

**Note:**  
If you don't know how to change the settings on your TV, or if you cannot hear anything through the headphone after changing the settings, please contact your TV manufacturer for support. Unplug any device from the 3.5mm AUX jack while using the OPTICAL out. (If anything is plugged into the AUX jack, the transmitter will prioritize the AUX signal).

**If your TV has Headphone (3.5mm) Out**

Please use the AUX cable to connect the transmitter to TV. Now you can stream audio from your TV.  
**Note:** If there is no sound playing from headphone, please set the **Sound Out/ Speaker** setting on your TV to "Wired headphones" or "Headset".

**If your TV has Red/White Audio Out (RCA - only for TV)**

Please use AUX cable & 3.5mm to RCA Audio adapter (both provided in the package) to connect the transmitter to TV. Now you can stream audio from your TV.  
**Note:**  
If there is no sound playing from headphone, please set the **Sound Out/ Speaker** setting on your TV to "External Speaker". Ensure that you use the Red/White ports labeled "AUDIO OUT", other Red/White ports will NOT work.

**If your Receiver has 6.35mm phone jack at front**

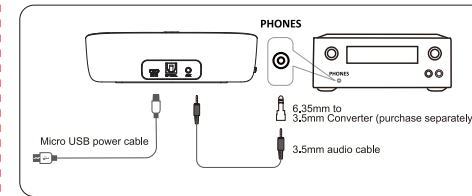


Fig1-2

Please do NOT use the RED/WHITE ports on the back of your AV receiver, they may permanently damage the transmitter. Please ONLY use the BIG 6.35MM PHONE OUT on front side of your AV Receiver with the 6.35mm to 3.5mm adapter. Plug any wired headphone into the converter plug, lower the volume on the Receiver for safety precautions, and test to see if there is audio coming through to your headphone. Lowering the volume beforehand is a safety measure to prevent damaging your ears.

**Tips & Troubleshooting**

**Fail to reconnect**

Normally, the headphone automatically reconnects to the transmitter each time they are turned on. If not, hold on/off/⌘ switch on headphone to ⌘ position for 2 seconds to manually activate reconnection. If it still does not work, you need to **manually pair the headphone to the transmitter**:

**Enter the transmitter into PAIRING mode** – Press and hold MFB button (Ⓞ) for 5 seconds, ⌘ LED indicator starts flashing **RED & BLUE**.

**Enter the headphone into PAIRING mode** – Turn on headphone, hold the on/off/⌘ switch to ⌘ position for 5 seconds, the LED indicator will start flashing **RED & BLUE**.

Keep them close to each other. once connected, the ⌘ LED indicator on both devices will turn **SOLID BLUE**.

**Clear paired history**

**Headphone AS50** - After power on, press volume button + and - for 10 seconds, LED lights light up **PINK** for 2 seconds, now all paired history of the headphone is cleared. Then it will automatically enter pairing mode.  
**Transmitter** - Enter the transmitter into pairing mode, now **DOUBLE** click the MFB button (Ⓞ) to clear all paired history of the transmitter.

**Dutsch Bedienungsanleitung**

**Einschalten & verbinden des Transmitters und der Kopfhörer**

- Einschalten des Transmitters**  
Verbinden Sie den Transmitter mit einer Stromquelle. Bei der Stromquelle kann es sich entweder um einen TV USB-Anschluss (der Fernseher muss **ENGESCHALTET** sein, um Strom zu liefern) oder ein 5V/500mA-2A USB-Ladegerät (z.B. Ihr Handy-Ladegerät) handeln.
- Schalten Sie den Transmitter und die Kopfhörer ein**  
**Schalten Sie den Transmitter ein** - Schieben Sie den AN/AUS-Schalter auf AN, die LED-Anzeige leuchtet 5 Sekunden lang **BLAU** auf, dann blinkt die LED-Anzeige schnell **BLAU** auf.  
**Schalten Sie die Kopfhörer ein** - Schieben Sie den Schalter auf EIN, die LED-Anzeige blinkt nun abwechselnd **ROT** und **BLAU** auf.  
Halten Sie den Transmitter und die Kopfhörer nun dicht beieinander und warten Sie, bis eine Verbindung besteht. Sobald die Verbindung besteht, leuchten die LED-Anzeigen auf dem Transmitter und an den Kopfhörern **DURCHGEHEND BLAU** auf.

Nach der Verwendung müssen Sie die Kopfhörer nicht ausschalten, legen Sie die Kopfhörer einfach zurück in das Transmitter-Dock, um diese aufzuladen. Stellen Sie sicher, dass die LED-Anzeige an den Kopfhörern während des Ladevorgangs **ROT** aufleuchtet, falls nicht, liegen die Kopfhörer nicht richtig im Ladedock. Bei der nächsten Verwendung nehmen Sie die Kopfhörer einfach aus dem Ladedock heraus, diese verbinden sich dann automatisch.



