

## 20141229\_System Check\_Dipole835V2 SN4d015

Frequency: 835 MHz; Duty Cycle: 1:1; Room Ambient Temperature: 24.0°C; Liquid Temperature: 23.0°C

Medium parameters used:  $f = 835.3$  MHz;  $\sigma = 0.979$  mho/m;  $\epsilon_r = 55.2$ ;  $\rho = 1000$  kg/m<sup>3</sup> ;

DASY4 Configuration:

- Area Scan setting - Find Secondary Maximum Within: 2.0 dB and with a peak SAR value greater than 0.0012W/kg
- Electronics: DAE4 Sn558; Calibrated: 7/22/2014
- Probe: EX3DV4 - SN3554; ConvF(7.55, 7.55, 7.55); Calibrated: 9/24/2014
- Sensor-Surface: 2mm (Mechanical Surface Detection)
- Phantom: Flat Phantom ELI4.0; Type: QDOVA001BA; Serial: SN: 1052

**Body/Pin=100mW, d=15mm/Area Scan (8x13x1):** Measurement grid: dx=15mm, dy=15mm

Maximum value of SAR (measured) = 2.26 mW/g

**Body/Pin=100mW, d=15mm/Zoom Scan (7x7x7)/Cube 0:** Measurement grid: dx=5mm, dy=5mm,

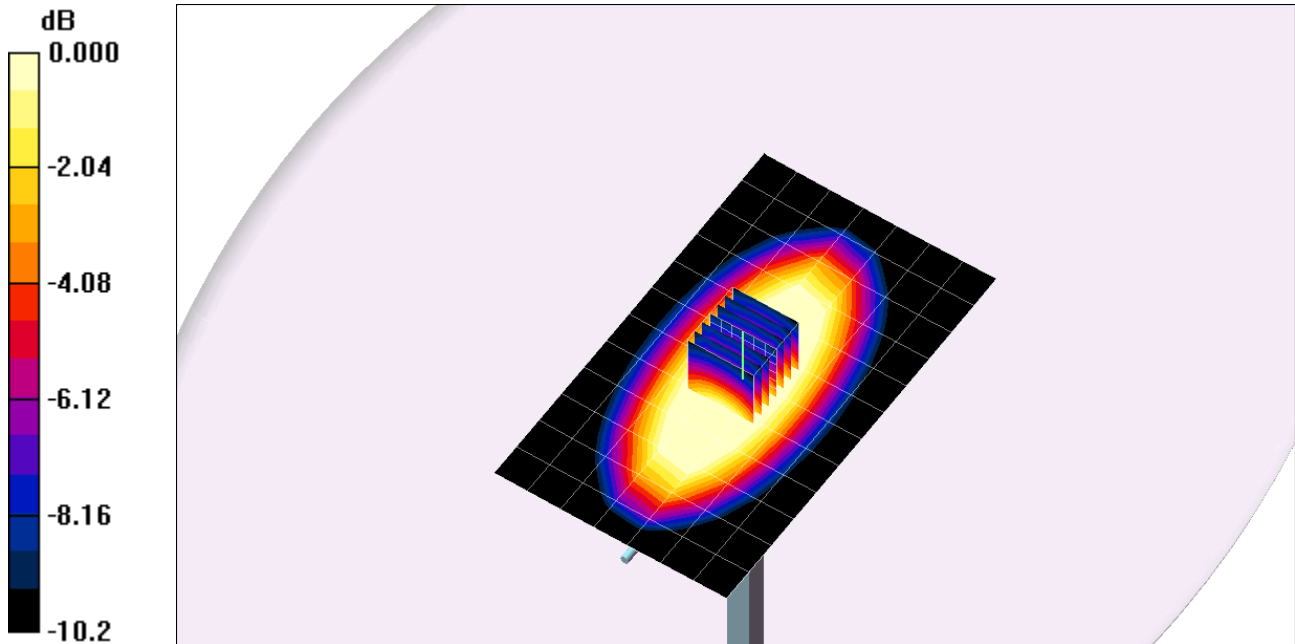
dz=5mm

Reference Value = 52.9 V/m; Power Drift = -0.04 dB

Peak SAR (extrapolated) = 1.37 W/kg

**SAR(1 g) = 0.928 mW/g; SAR(10 g) = 0.617 mW/g**

Maximum value of SAR (measured) = 1.17 mW/g

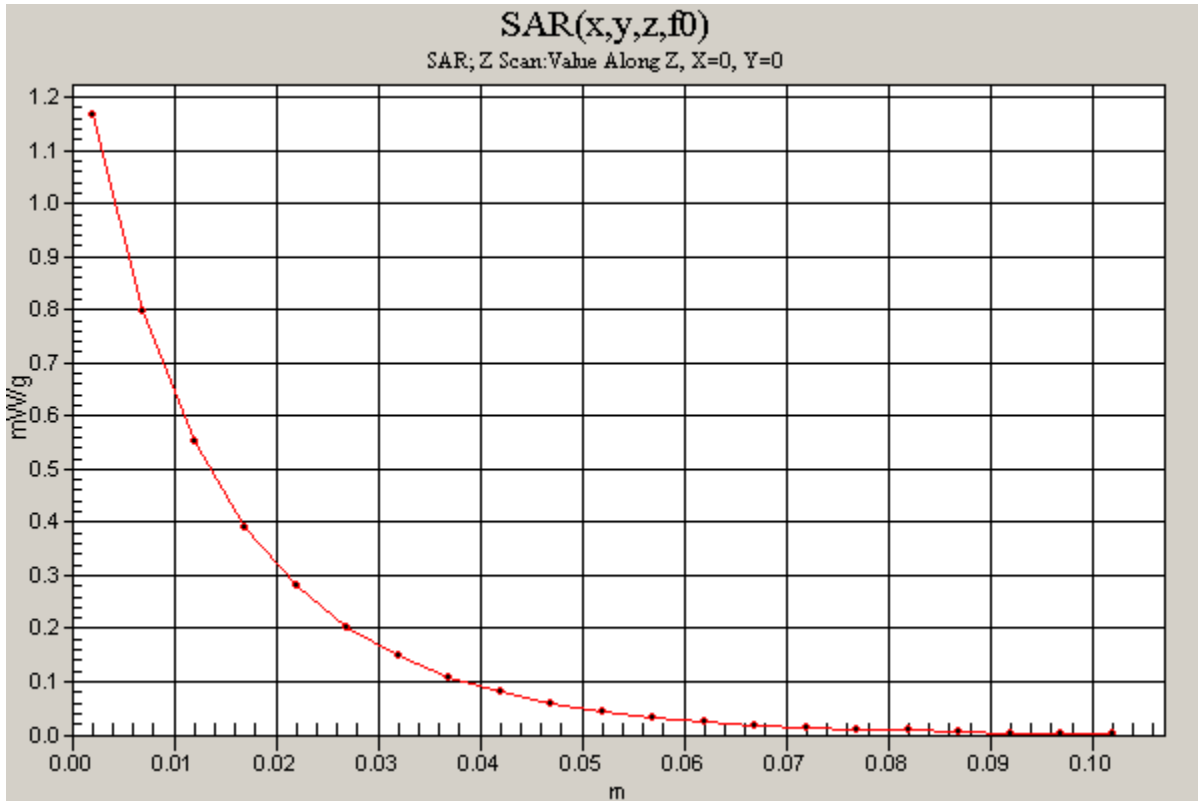


0 dB = 1.17mW/g

### 20141229\_System Check\_Dipole835V2 SN4d015

Frequency: 835 MHz; Duty Cycle: 1:1

**Body/Pin=100mW, d=15mm/Z Scan (1x1x21):** Measurement grid: dx=20mm, dy=20mm, dz=5mm  
Maximum value of SAR (measured) = 1.17 mW/g



**20141229\_System Check\_Dipole1900V2 SN5d056**

Frequency: 1900 MHz; Duty Cycle: 1:1; Room Ambient Temperature: 24.0°C; Liquid Temperature: 23.0°C

Medium parameters used (interpolated):  $f = 1900$  MHz;  $\sigma = 1.57$  mho/m;  $\epsilon_r = 54.1$ ;  $\rho = 1000$  kg/m<sup>3</sup>;

DASY4 Configuration:

- Area Scan setting - Find Secondary Maximum Within: 2.0 dB and with a peak SAR value greater than 0.0012W/kg
- Electronics: DAE4 Sn558; Calibrated: 7/22/2014
- Probe: EX3DV4 - SN3554; ConvF(6.54, 6.54, 6.54); Calibrated: 9/24/2014
- Sensor-Surface: 2mm (Mechanical Surface Detection)
- Phantom: SAM 34-1; Type: SAM V4.0; Serial: TP-1150

**Body/Pin=100mW, d=10mm/Area Scan (8x9x1):** Measurement grid: dx=15mm, dy=15mm

[Info: Interpolated medium parameters used for SAR evaluation.](#)

Maximum value of SAR (measured) = 4.32 mW/g

**Body/Pin=100mW, d=10mm/Zoom Scan (7x7x7)/Cube 0:** Measurement grid: dx=5mm, dy=5mm, dz=5mm

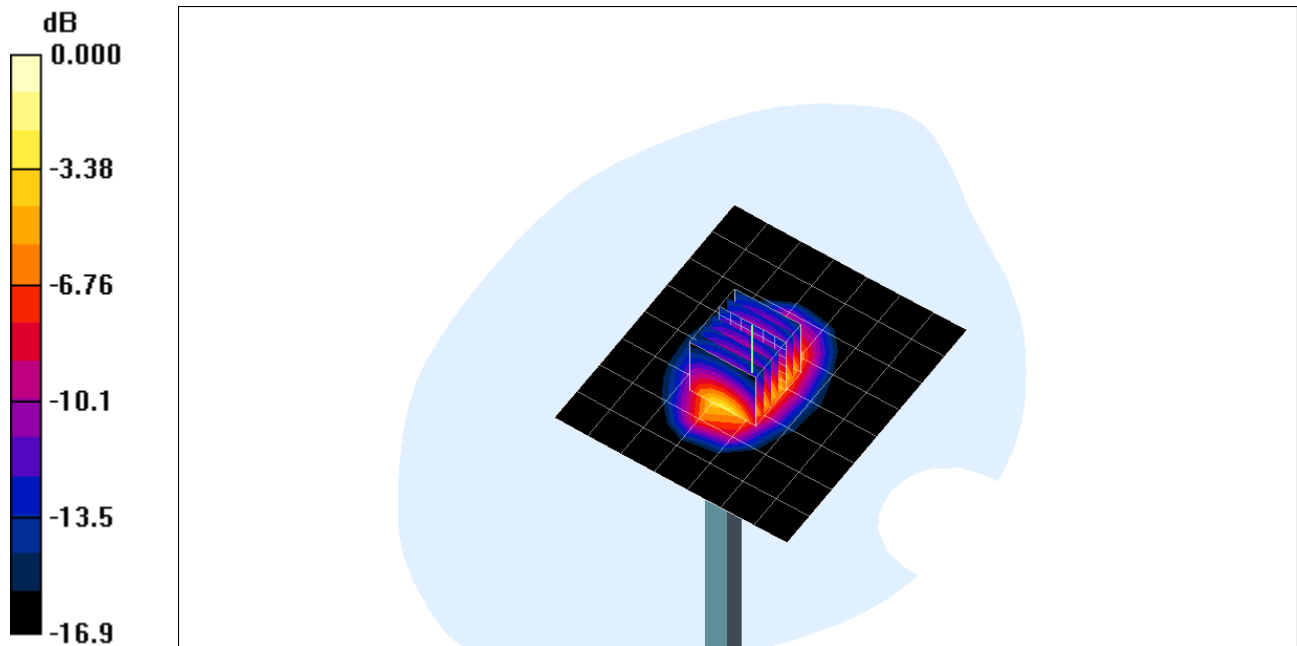
Reference Value = 58.7 V/m; Power Drift = 0.051 dB

Peak SAR (extrapolated) = 7.03 W/kg

**SAR(1 g) = 3.97 mW/g; SAR(10 g) = 2.11 mW/g**

[Info: Interpolated medium parameters used for SAR evaluation.](#)

Maximum value of SAR (measured) = 5.59 mW/g



0 dB = 5.59mW/g

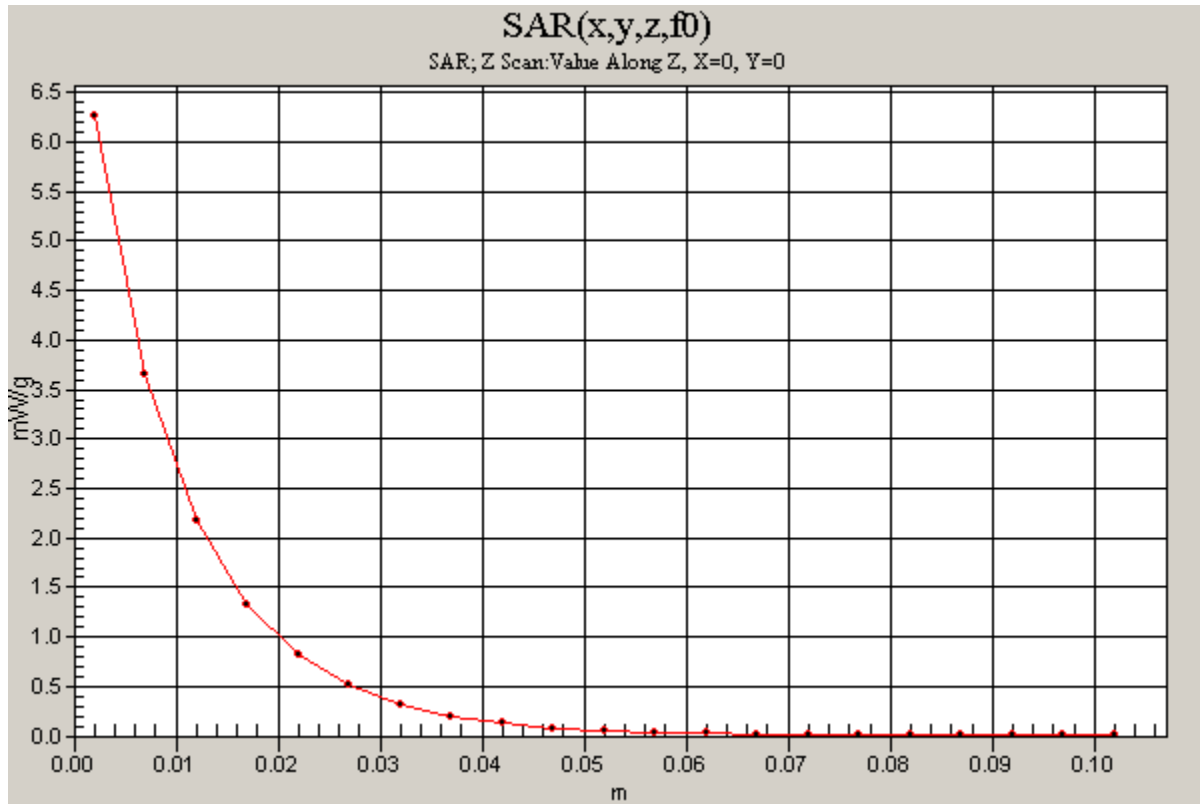
### 20141229\_System Check\_Dipole1900V2 SN5d056

Frequency: 1900 MHz; Duty Cycle: 1:1

**Body/Pin=100mW, d=10mm/Z Scan (1x1x21):** Measurement grid: dx=20mm, dy=20mm, dz=5mm

Info: [Interpolated medium parameters used for SAR evaluation.](#)

Maximum value of SAR (measured) = 6.27 mW/g



## 20141229\_System Check\_Dipole2450 sn728

Frequency: 2450 MHz; Duty Cycle: 1:1; Room Ambient Temperature: 24.0°C; Liquid Temperature: 23.0°C

Medium parameters used (interpolated):  $f = 2450$  MHz;  $\sigma = 1.97$  mho/m;  $\epsilon_r = 53.5$ ;  $\rho = 1000$  kg/m<sup>3</sup> ;

DASY4 Configuration:

- Area Scan setting - Find Secondary Maximum Within: 2.0 dB and with a peak SAR value greater than 0.0012W/kg
- Electronics: DAE4 Sn558; Calibrated: 7/22/2014
- Probe: EX3DV4 - SN3554; ConvF(6.15, 6.15, 6.15); Calibrated: 9/24/2014
- Sensor-Surface: 2mm (Mechanical Surface Detection)
- Phantom: SAM 34-1; Type: SAM V4.0; Serial: TP-1150

**Body/Pin=100mW, d=10mm/Area Scan (8x9x1):** Measurement grid: dx=15mm, dy=15mm

[Info: Interpolated medium parameters used for SAR evaluation.](#)

Maximum value of SAR (measured) = 5.42 mW/g

**Body/Pin=100mW, d=10mm/Zoom Scan (7x7x7)/Cube 0:** Measurement grid: dx=5mm, dy=5mm, dz=5mm

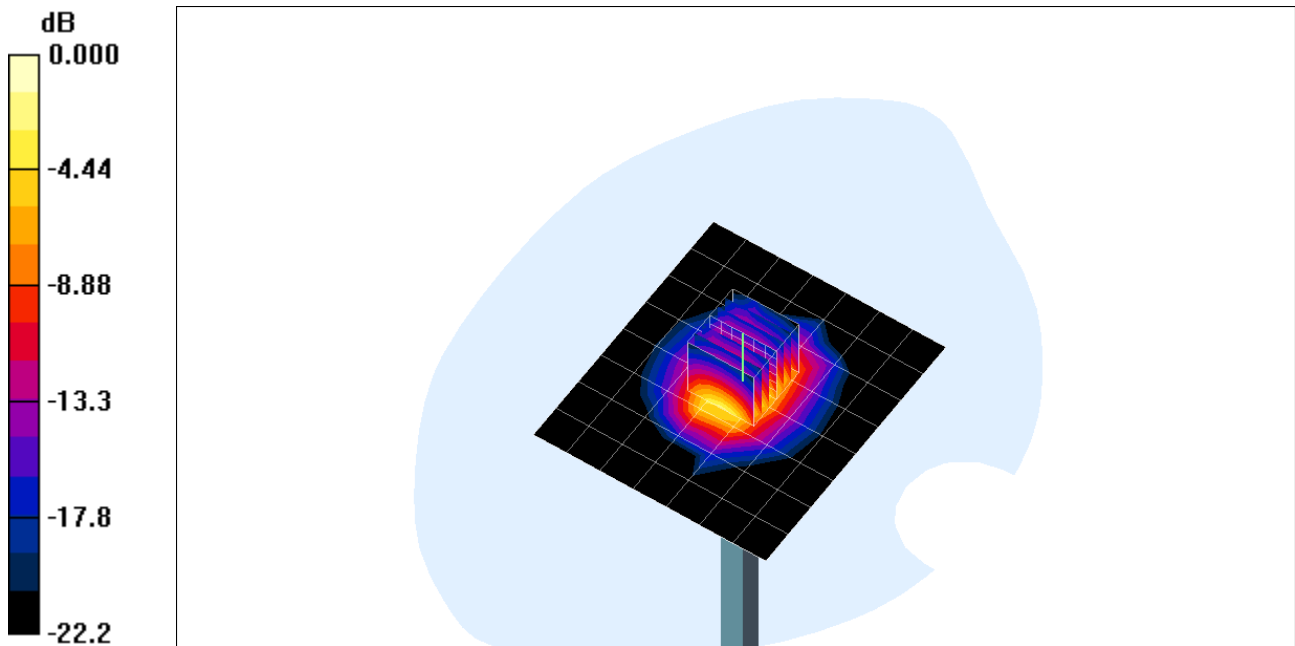
Reference Value = 62.5 V/m; Power Drift = 0.022 dB

Peak SAR (extrapolated) = 10.9 W/kg

**SAR(1 g) = 5.18 mW/g; SAR(10 g) = 2.41 mW/g**

[Info: Interpolated medium parameters used for SAR evaluation.](#)

Maximum value of SAR (measured) = 7.95 mW/g



0 dB = 7.95mW/g

## 20141229\_System Check\_Dipole2450 sn728

Frequency: 2450 MHz; Duty Cycle: 1:1

**Body/Pin=100mW, d=10mm/Z Scan (1x1x21):** Measurement grid: dx=20mm, dy=20mm, dz=5mm

Info: [Interpolated medium parameters used for SAR evaluation.](#)

Maximum value of SAR (measured) = 8.07 mW/g

