



CASTLES TECHNOLOGY

S1E2-L POS Terminal

Book 2

User Manual

S1E2-L

Version 1.1

Aug. 2022

CRT-S1-15-02-V1.1- CE-FCC-IC-UL-CB

Castles Technology Co., Ltd.

6F, No. 207-5, Sec. 3, Beixin Rd., Xindian District,
New Taipei City 23143, Taiwan R.O.C.

<http://www.castech.com.tw>

WARNING

Information in this document is subject to change without prior notice.

No part of this publication may be reproduced, transmitted, stored in a retrieval system, nor translated into any human or computer language, in any form or by any means, electronic, mechanical, magnetic, optical, chemical, manual, or otherwise, without the prior written permission of **Castles Technology Co., Ltd.**

All trademarks mentioned are proprietary to their respective owners.

Revision History

<i>Version</i>	<i>Date</i>	<i>Descriptions</i>	<i>Author</i>
1.0	Jul.12.2022	Initial creation.	Dustin
1.1	Aug.19.2022	Add Note	Dustin

Castles Technology

Contents

1. Regulatory instruction of usage	5
2. Hardware Setup	6
2.1. Parts of the Terminal	6
2.2. Insert Battery	10
2.3. Insert SAM Card	11
2.4. Insert GSM Micro SIM Card.....	12
2.5. Insert Micro SD card	13
3. Appendix	14
3.1. FCC.....	14
3.2. IC.....	15
3.3. UL / IEC 62368-1	16

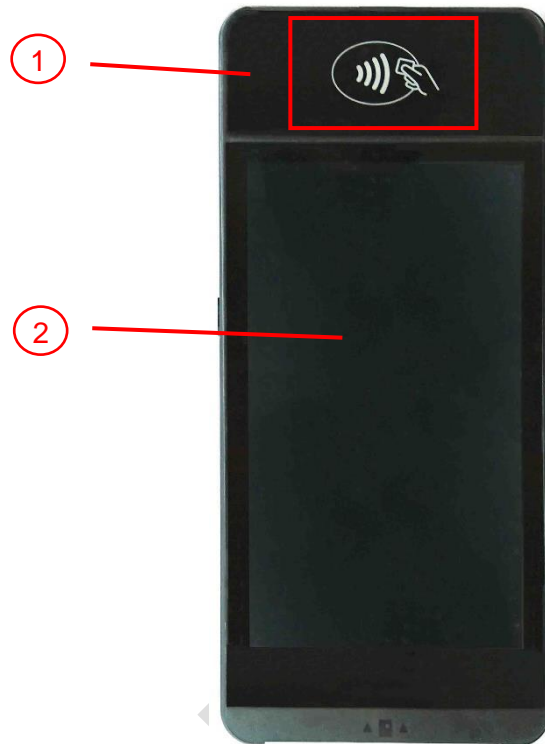
1. Regulatory instruction of usage

- Before using the terminal, please check the does it has been disassembled, modified, or happened the abnormal situation. If yes, please do not continue to use.
- Please stay away from strong electromagnetic waves.
(Example) Microwave ovens, magnets, shoplifting prevention devices, high-voltage wires, automatic doors, communication antennas, etc.
- Condensation can occur when moving from a cold place to a warm place. If condensation occurs, do not use the unit until the connected water droplets evaporate.
- Static electricity may occur in some places (such as where you are using a carpet).
- Please do not leave it in the sun for a long time.
- Please operate the unit carefully as it is a precision instrument. Do not apply impact, drop or heavy objects on top of the unit.
- Do not attach dust, oil, etc. to a part of the power terminal. Also, please do not scratch.

2. Hardware Setup

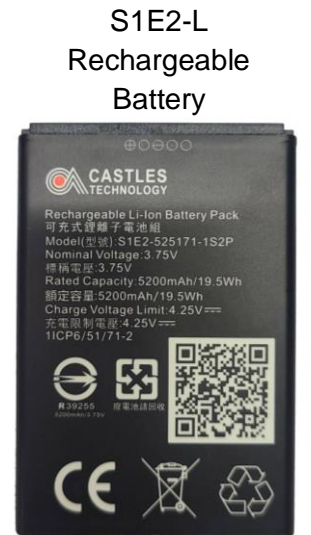
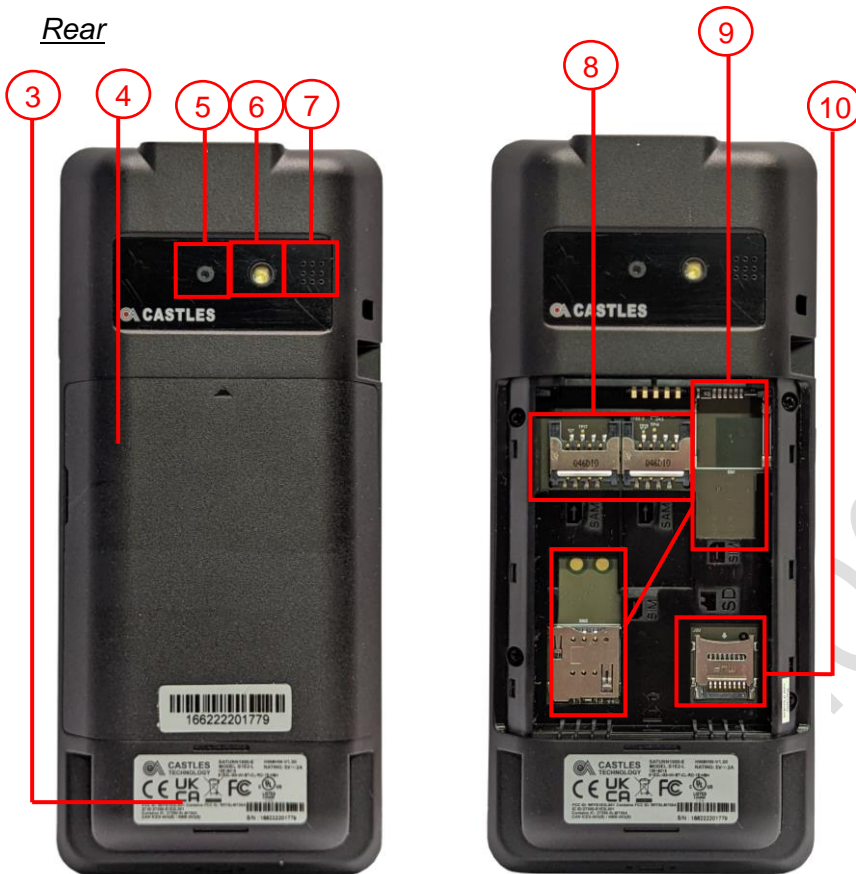
2.1. Parts of the Terminal

Front



1. Contactless Card Landing Zone
2. LCD Display (5")

Rear



- 3. Product Label
- 4. Rechargeable Battery Cover
- 5. Rear Camera
- 6. Photo-Flash
- 7. Speaker
- 8. SAM Slots 1-2
- 9. GSM SIM Card Slots 1-2
- 10. Micro SD Card Slot

Top



11. Barcode Scanner

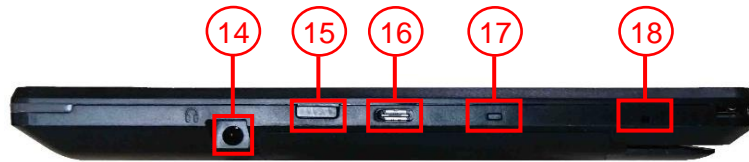
Bottom



12. Smart Card Reader

13. Magnetic Stripe Reader

Left side



Right side



14. Headphone Jack

15. Barcode Scan Button

16. USB Type C Slot

17. LED Indicator

Green Light: External power source connecting and battery is full.

Red Light: Battery charging function activated

18. Microphone

19. Contactless LED Indicator

20. Power Button

21. Magnetic Stripe Reader

22. Charger Pin

2.2. Insert Battery



Step 1: Remove the battery cover.

Step 2: Insert the battery into the compartment

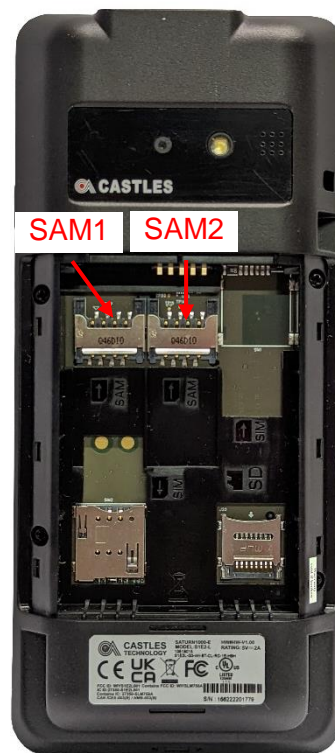
Step 3: Reverse the operation of step 1 to install the battery cover.

Note 1: Please confirm the battery is installed before power on the terminal.

Note 2: Highest specified charging temperature: $45\pm 3^{\circ}\text{C}$; Lowest specified charging temperature: $0\pm 3^{\circ}\text{C}$.

Note 3: Please do not use terminal while charging.

2.3. Insert SAM Card



Step 1: Remove battery cover / back cover

Step 2: Insert SAM card into desire slot.

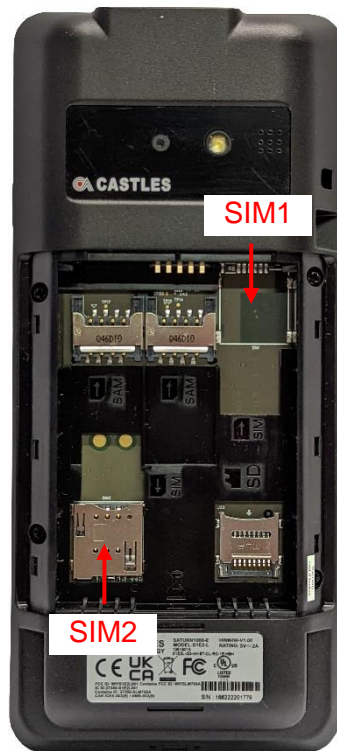


SAM 1 & 2:

Gold contact is on the upper side of the card and facing down.

Step 3: Reverse the operation of step 1 to install the battery cover.

2.4. Insert GSM Micro SIM Card



Step 1: Remove battery cover / back cover

Step 2: Insert GSM Micro SIM card into desire slot.



SIM 1:

Cut corner is on the upper left side of card and facing down.

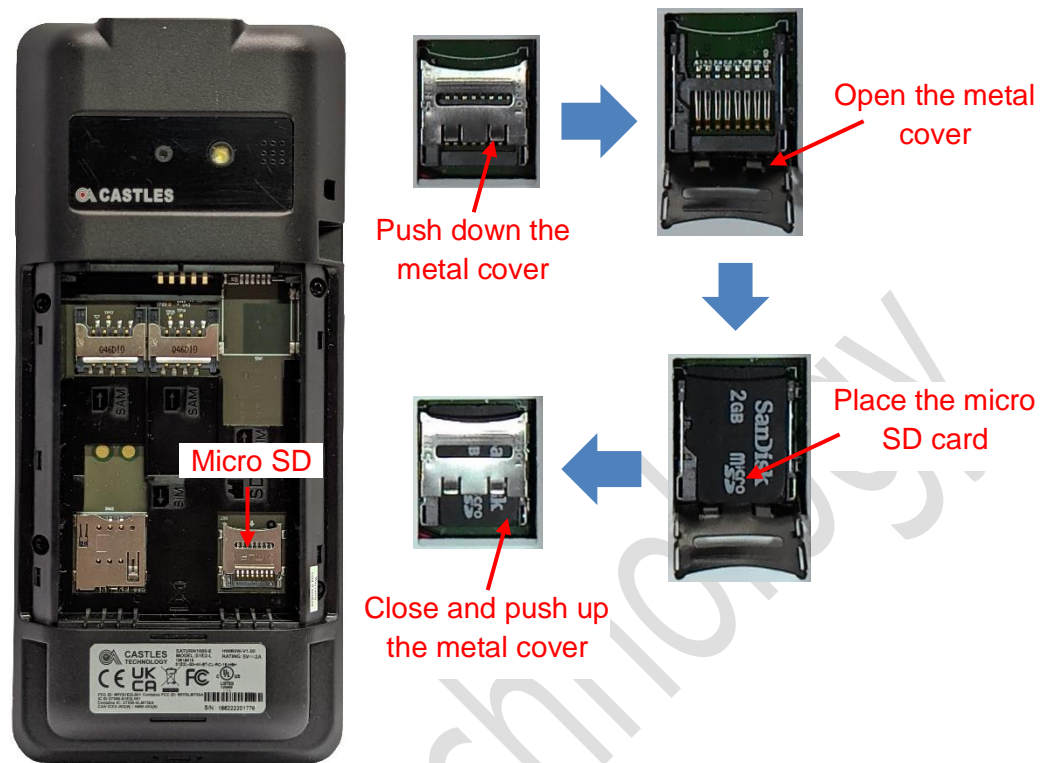


SIM 2:

Cut corner is on the lower right side of card and facing down.

Step 3: Reverse the operation of step 1 to install the battery cover.

2.5. Insert Micro SD card



Step 1: Remove battery cover / back cover

Step 2: Place Micro SD memory card.

Step 3: Reverse the operation of step 1 to install the battery cover.

3. Appendix

3.1. FCC

Federal Communication Commission Interference Statement

This device complies with Part 15 of the FCC Rules. Operation is subject to the following two conditions: (1) This device may not cause harmful interference, and (2) this device must accept any interference received, including interference that may cause undesired operation.

This equipment has been tested and found to comply with the limits for a Class B digital device, pursuant to Part 15 of the FCC Rules. These limits are designed to provide reasonable protection against harmful interference in a residential installation. This equipment generates, uses and can radiate radio frequency energy and, if not installed and used in accordance with the instructions, may cause harmful interference to radio communications. However, there is no guarantee that interference will not occur in a particular installation. If this equipment does cause harmful interference to radio or television reception, which can be determined by turning the equipment off and on, the user is encouraged to try to correct the interference by one of the following measures:

- Reorient or relocate the receiving antenna.
- Increase the separation between the equipment and receiver.
- Connect the equipment into an outlet on a circuit different from that to which the receiver is connected.
- Consult the dealer or an experienced radio/TV technician for help.

FCC Caution:

- Any changes or modifications not expressly approved by the party responsible for compliance could void the user's authority to operate this equipment.
- This transmitter must not be co-located or operating in conjunction with any other antenna or transmitter.

Radiation Exposure Statement:

This equipment complies with RF radiation exposure limits set forth for an uncontrolled environment. This equipment should be installed and operated with a minimum distance of SAR between the radiator and your body.

Operation in the band 5150-5250 MHz is only for indoor use to reduce the potential for harmful interference to co-channel mobile satellite systems.

To reduce exposure to RF energy, use a hands-free accessory or other similar option to keep this device away from your head and body. Carry this device at least 5 mm away from your body to ensure exposure levels remain at or below the as-tested levels. Choose the belt clips, holsters, or other similar body-worn accessories which do not contain metallic components to support operation in this manner. Cases with metal parts may change the RF performance of the device, including its compliance with RF exposure guidelines, in a manner that has not been tested or certified, and use such accessories should be avoided.

Note: The country code selection is for non-US model only and is not available to all US model. Per FCC regulation, all WiFi product marketed in US must fixed to US operation channels only.

3.2. IC

Industry Canada statement

This device complies with ISED's licence-exempt RSSs. Operation is subject to the following two conditions: (1) This device may not cause harmful interference, and (2) this device must accept any interference received, including interference that may cause undesired operation.

Le présent appareil est conforme aux CNR d'ISED applicables aux appareils radio exempts de licence. L'exploitation est autorisée aux deux conditions suivantes : (1) le dispositif ne doit pas produire de brouillage préjudiciable, et (2) ce dispositif doit accepter tout brouillage reçu, y compris un brouillage susceptible de provoquer un fonctionnement indésirable.

Radiation Exposure Statement:

The product comply with the Canada portable RF exposure limit set forth for an uncontrolled environment and are safe for intended operation as described in this manual. The further RF exposure reduction can be achieved if the product can be kept as far as possible from the user body or set the device to lower output power if such function is available.

Déclaration d'exposition aux radiations:

Le produit est conforme aux limites d'exposition pour les appareils portables RF pour les Etats-Unis et le Canada établies pour un environnement non contrôlé.

Le produit est sûr pour un fonctionnement tel que décrit dans ce manuel. La réduction aux expositions RF peut être augmentée si l'appareil peut être conservé aussi loin que possible du corps de l'utilisateur ou que le dispositif est réglé sur la puissance de sortie la plus faible si une telle fonction est disponible.

Caution :

- (i) the device for operation in the band 5150-5250 MHz is only for indoor use to reduce the potential for harmful interference to co-channel mobile satellite systems;
- (ii) where applicable, antenna type(s), antenna models(s), and worst-case tilt angle(s) necessary to remain compliant with the e.i.r.p. elevation mask requirement set forth in section 6.2.2.3 shall be clearly indicated.

Avertissement:

Le guide d'utilisation des dispositifs pour réseaux locaux doit inclure des instructions précises sur les restrictions susmentionnées, notamment :

- (i) les dispositifs fonctionnant dans la bande 5150-5250 MHz sont réservés uniquement pour une utilisation à l'intérieur afin de réduire les risques de brouillage préjudiciable aux systèmes de satellites mobiles utilisant les mêmes canaux;
- (ii) lorsqu'il y a lieu, les types d'antennes (s'il y en a plusieurs), les numéros de modèle de l'antenne et les pires angles d'inclinaison nécessaires pour rester conforme à l'exigence de la p.i.r.e. applicable au masque d'élévation, énoncée à la section 6.2.2.3, doivent être clairement indiqués.

3.3. UL / IEC 62368-1

- **Warning:**
Power cord shall be connected to a socket-outlet with earthing connection.
- **Warning:**
Risk of explosion if battery is replaced by an incorrect type. Dispose of expended battery in accordance with local disposal regulations.
- **Warning:**
This product is intended to be supplied by a Listed Power Adapter "L.P.S." (Or "Limited Power Source") and is rated at 5 Vdc, 2 A min., Tma = 40 degrees C.
 - **Attention:**
le cordon d'alimentation doit être branché sur une prise secteur avec mise à la terre.
 - **Attention:**
Risque d'explosion si la batterie est remplacée par une de type incorrect Éliminer la pile usagée conformément à la réglementation locale en vigueur.
 - **Attention:**
Le produit est destiné à être alimenté par un adaptateur secteur répertorié « L.P.S. » (ou "Source d'alimentation limitée") et est évalué à 5 Vdc, 2 A min., Tma = 40 degrés C.

~ END ~