



CASTLES TECHNOLOGY

S1FB POS Cradle

Book 2

User Manual

S1FB

Version 1.1

Oct 2021

CRT-S1-09-02-V1.0-CB-CE-FCC-IC-UL

Castles Technology Co., Ltd.

6F, No. 207-5, Sec. 3, Beixin Rd., Xindian District,

New Taipei City 23143, Taiwan R.O.C.

<http://www.castech.com.tw>

WARNING

Information in this document is subject to change without prior notice.

No part of this publication may be reproduced, transmitted, stored in a retrieval system, nor translated into any human or computer language, in any form or by any means, electronic, mechanical, magnetic, optical, chemical, manual, or otherwise, without the prior written permission of **Castles Technology Co., Ltd.**

All trademarks mentioned are proprietary to their respective owners.

Revision History

<i>Version</i>	<i>Date</i>	<i>Descriptions</i>	<i>Author</i>
1.0	2021.10.05	Initial creation.	John
1.1	2021.10.06	Correct product type and removed modem port	John

Castles Technology

Contents

1. Introduction	5
2. Hardware Setup	6
2.1. Parts of S1FB.....	6
2.2. Turn on S1FB.....	8
2.3. Charge with S1FB.....	9
3. Basic Operation	10
3.1. S1FB Connection mode (via USB).....	10
3.2. S1FB Connection mode (via Wi-Fi).....	11
3.3. S1FB Connection to Ethernet	13

1. Introduction

This document provides a guideline on operating and configuring Castles S1 cradle
The scope of this document includes setting up and basic operation.

Regulatory instruction of usage

- Before using the cradle, please check has it been disassembled, modified, or showed abnormal situation. If yes, please do not use.
- Please stay away from strong electromagnetic waves.
(Example) Microwave ovens, magnets, shoplifting prevention devices, high-voltage wires, automatic doors, communication antennas, etc.
- Condensation can occur when moving from a cold place to a warm place. If condensation occurs, do not use the unit until the connected water droplets evaporate.
- Static electricity may occur in some places (such as where you use a carpet).
- Please do not leave it in the sun for a long time.
- Please operate the unit carefully as it is a precision instrument. Do not apply impact, drop or heavy objects on top of the unit.
- Do not attach dust, oil, etc. to a part of the power terminal. Also, please do not scratch.

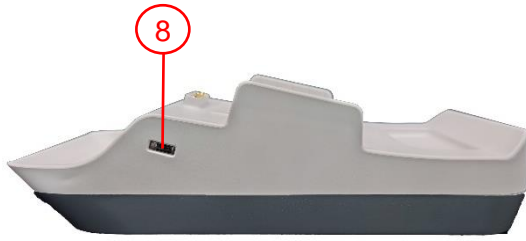
2. Hardware Setup

2.1. Parts of S1FB



1. Charger pin
2. Power Connector
3. Com Port 1
4. Com Port 2
5. Ethernet Port
6. USB Port 2
7. USB Port 1

Left side



Right side



- 8. Power &WiFi Indicator(Left)
- 9. Power &WiFi Indicator(Right)

Castles Technology

2.2. Turn on S1FB

Step 1



Step 2



Step 1: Plug in Power Supplies.

Step 2: After connecting power, the power indicator will show green light.

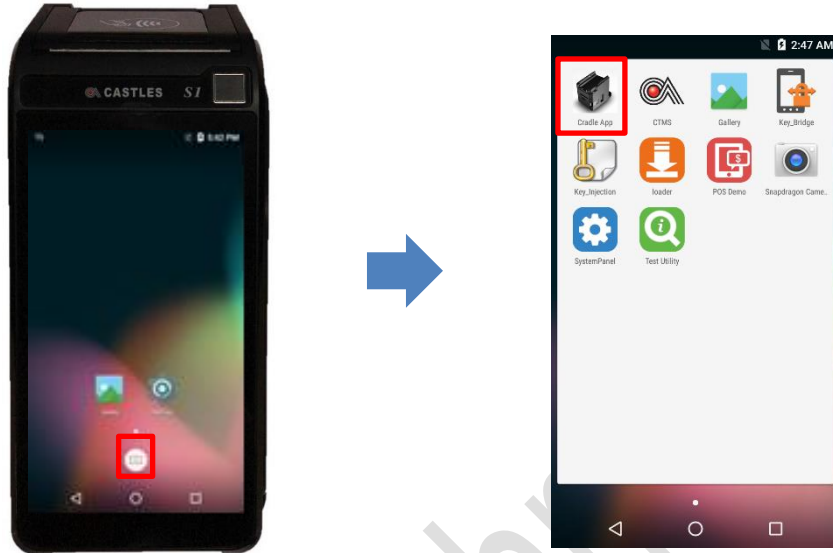
2.3. Charge with S1FB



Put SATURN1000F on S1FB, then S1FB will start charging SATURN1000F.

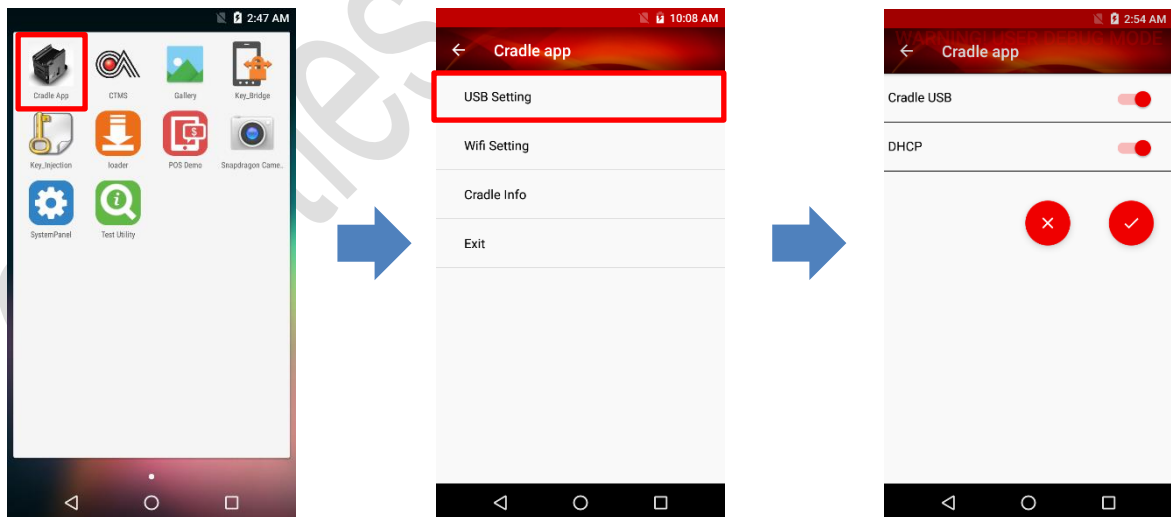
3. Basic Operation

User can use “Cradle app” to set up connection between Terminal and Cradle.
Connection from Terminal to Ethernet via Wi-fi.



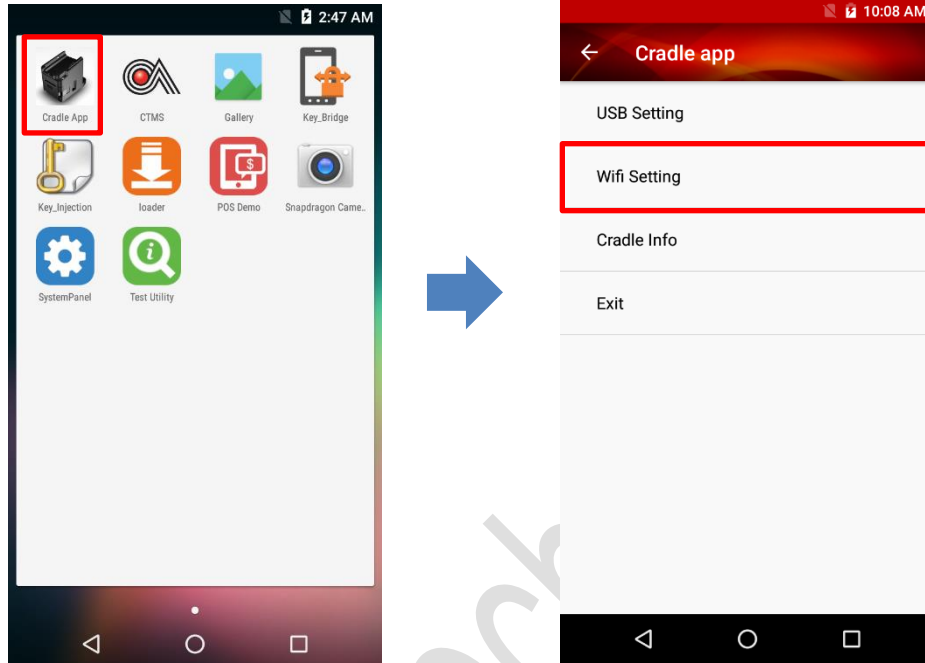
3.1. S1FB Connection mode (via USB)

Step 1. Open “Cradle app” and Click into “USB Setting”. Select your requirements.

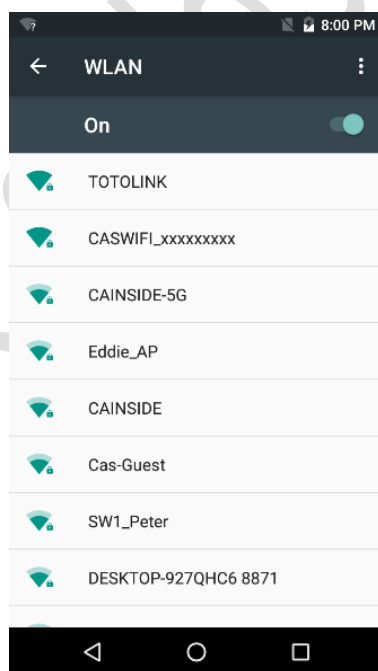


3.2. S1FB Connection mode (via Wi-Fi)

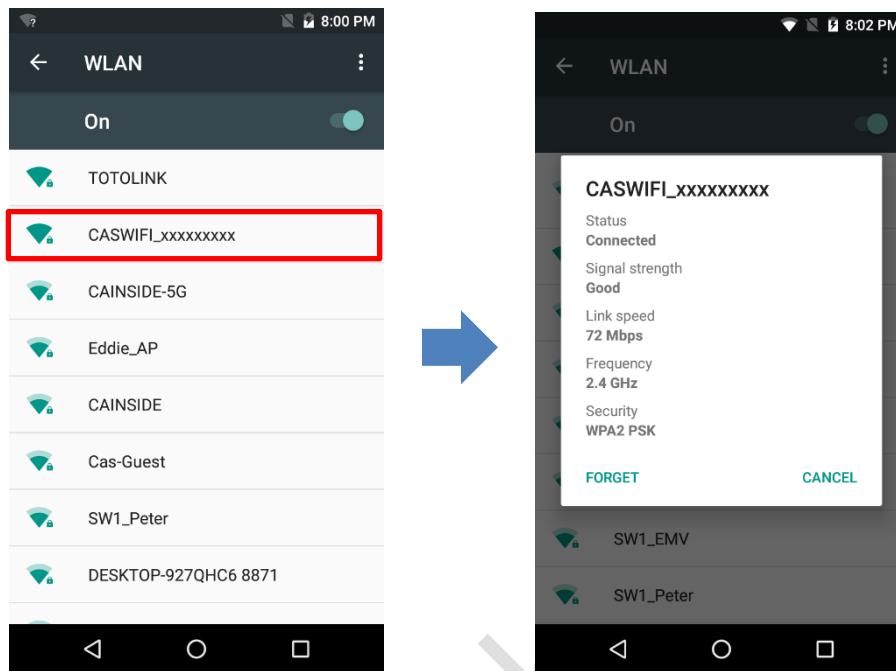
Step 1: Select Cradle App



Step 2: Click into “Wifi Setting” and Check the Serial Number of S1FB



Step 3: Find S1FB Name and enter Wi-Fi password on SATURN1000F

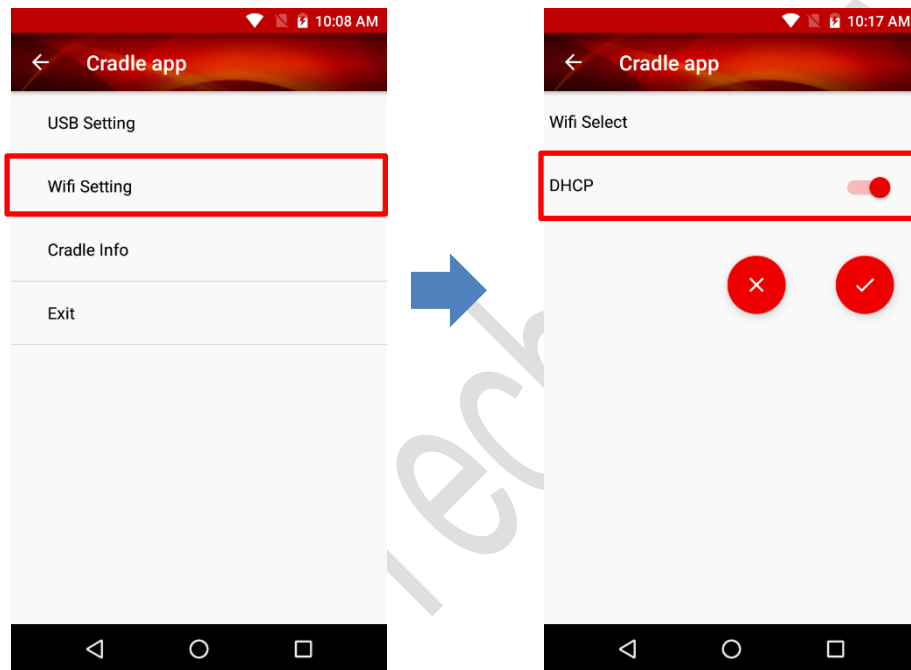


Note: Default Name for S1FB Wi-Fi is “CASWIFI_XXXXXXXX(S/N)”.
Default password for S1FB Wi-Fi is “9876543210”.
Security: WPA2 PSK

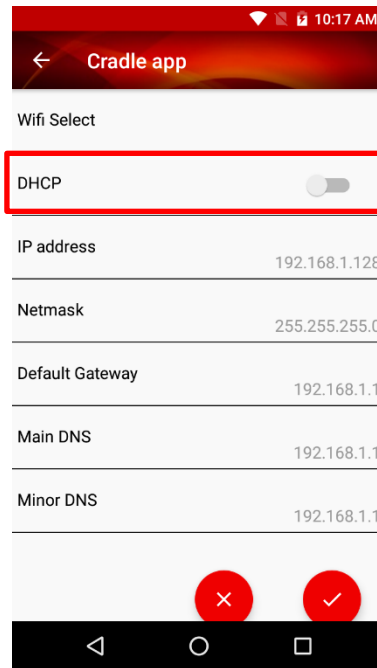
3.3. S1FB Connection to Ethernet

Step 1: Make Sure the Wifi connection between Android terminal and Cradle,
For more information, please refer to S1FB Connection mode (via Wi-Fi)

Step 2: After confirming connection between Android terminal and Cradle, go
back to “Cradle app” main menu and select “Wifi Setting”.

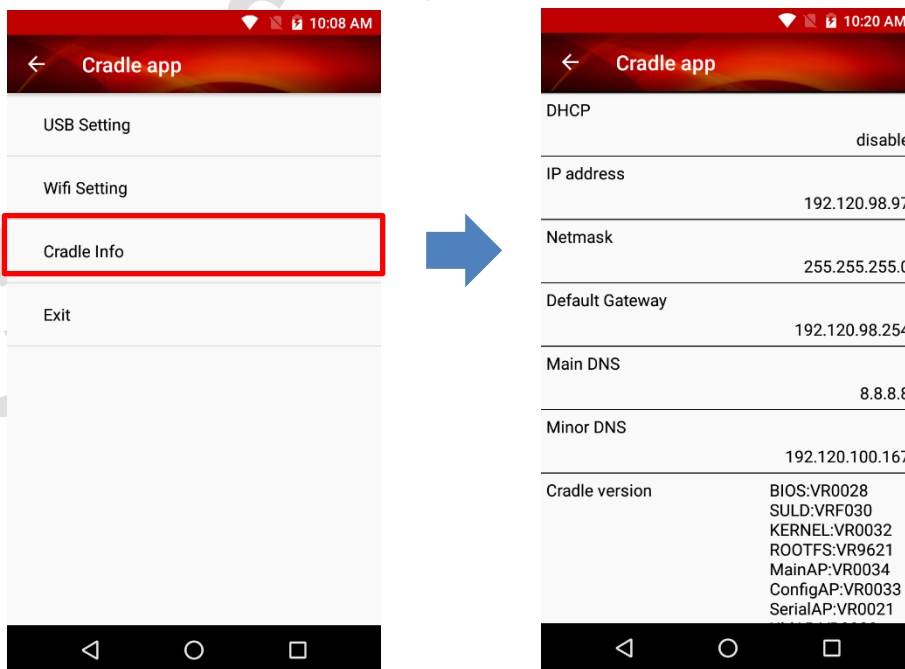


Step 3(Optional): The default setting of “DHCP” is On, if you want to set Static IP address, switch off the “DHCP”.



S1FB

After connected to Ethernet, you can get the Information by clicking “Cradle Info”



4. Appendix

4.1. FCC

Federal Communication Commission Interference Statement

This device complies with Part 15 of the FCC Rules. Operation is subject to the following two conditions: (1) This device may not cause harmful interference, and (2) this device must accept any interference received, including interference that may cause undesired operation.

This equipment has been tested and found to comply with the limits for a Class B digital device, pursuant to Part 15 of the FCC Rules. These limits are designed to provide reasonable protection against harmful interference in a residential installation. This equipment generates, uses and can radiate radio frequency energy and, if not installed and used in accordance with the instructions, may cause harmful interference to radio communications. However, there is no guarantee that interference will not occur in a particular installation. If this equipment does cause harmful interference to radio or television reception, which can be determined by turning the equipment off and on, the user is encouraged to try to correct the interference by one of the following measures:

- Reorient or relocate the receiving antenna.
- Increase the separation between the equipment and receiver.
- Connect the equipment into an outlet on a circuit different from that to which the receiver is connected.
- Consult the dealer or an experienced radio/TV technician for help.

FCC Caution:

- Any changes or modifications not expressly approved by the party responsible for compliance could void the user's authority to operate this equipment.
- This transmitter must not be co-located or operating in conjunction with any other antenna or transmitter.

Radiation Exposure Statement:

This equipment complies with FCC radiation exposure limits set forth for an uncontrolled environment. This equipment should be installed and operated with minimum distance 20cm between the radiator & your body.

4.2. UL / IEC 62368-1

- **Warning:**

Power cord shall be connected to a socket-outlet with earthing connection.

- **Attention:**

le cordon d'alimentation doit être branché sur une prise secteur avec mise à la terre.

4.3. Canada IC

Industry Canada statement

This device complies with ISED's licence-exempt RSSs. Operation is subject to the following two conditions: (1) This device may not cause harmful interference, and (2) this device must accept any interference received, including interference that may cause undesired operation. Le présent appareil est conforme aux CNR d'ISED applicables aux appareils radio exempts de licence. L'exploitation est autorisée aux deux conditions suivantes : (1) le dispositif ne doit pas produire de brouillage préjudiciable, et (2) ce dispositif doit accepter tout brouillage reçu, y compris un brouillage susceptible de provoquer un fonctionnement indésirable.

Radiation Exposure Statement:

This equipment complies with ISED radiation exposure limits set forth for an uncontrolled environment. This equipment should be installed and operated with greater than 20cm between the radiator & your body.

Déclaration d'exposition aux radiations:

Cet équipement est conforme aux limites d'exposition aux rayonnements ISED établies pour un environnement non contrôlé. Cet équipement doit être installé et utilisé à plus de 20cm entre le radiateur et votre corps.

~End~