

SW-E700 Series

User' s Manual



Contents

1 Product Overview	2
2 System Overview	2
3 Hardware Overview	2
4 Quick Start	3
1. Internet Access Express	4
2. Email Box.....	6
3. Instant Communication	11
4. Word Processor	13
5. E-table	17
6. E-dictionary.....	18
7. PDF Viewer.....	20
8. E-book Reader.....	20
9. Xip Flash Player.....	23
10. Multimedia Player	24
11. Image Browser.....	26
12. Calculator.....	28
13. Painting at Will	28
14. Calendar	29
15. File Manager	33
16. Network Dial-up	36
17. Software Manager.....	40
18. System Settings	42

1 Product Overview

The SW-E700 Series is an affordable product with low power consumption, designed for communication and digital multimedia entertainment by accessing Internet through a broadband terminal. It can be easily operated by the user, without bothering about intrusion of viruses. In addition to a variety of multimedia entertainment and high-speed broadband Internet access functions, the SW-E700 can be used for other purposes, such as the e-book reader, picture browser, Flash player, instant communication, e-dictionary, MP3 player, game simulator and PDA. Also, it provides the user with personalized and abundant Flash desktops.

Remarkable characteristics

- 7-INCH TFT-LCD
- True color image display
- Broadband Internet access
- Highly secure Linux OS, free of viruses
- All kinds of Xiptech application software packages

Enriched experience

- Internet surfing, information searching and news reading
- Instant online communication with family, friends or classmates
- Movie and music downloading and enjoying
- Flash movies and games
- All types of games simulation
- Picture and image sharing
- English searching and learning

Office assistant

- Office software package
- E-mail receiving and sending management
- Daily work plan and management
- PDF viewer
- E-book reader

2 System Overview

Provided with the embedded Linux OS, the SW-E700 Series features perfect performance, adaptability and robustness. It gives the user a stable work environment and software running environment.

3 Hardware Overview



- ◆ Processor: XBurst 400 MHz 32-bit CPU
- ◆ Display terminal: 7-inch 800*480 true-color LCD
- ◆ RAM: 128M RAM
- ◆ Storage: 512M NAND Flash
- ◆ USB port: 2 extensible USB ports
- ◆ External storage: SD card slot

- ◆ Input device: standard keyboard and mouse
- ◆ Broadband interface: 10/100MB Ethernet interface
- ◆ Network access: ADSL, WiFi, CDMA, GPRS (optional)
- ◆ Appearance of the device



Appearance

4 Quick Start

1. Power on or power off the SW-E700 Series through its I/O button.
2. Acquaint yourself with the desktop: The desktop is divided into 3 areas: the application area, taskbar and the clock.
3. Open an application:
Move the cursor to the desired application icon, and click to open the related application. Notes:
 - To effectively use resources, you can open only 3 applications at the same time.
 - To open the minimized application from the task bar, click the minimizing icon.
4. Page flipping: Click the flipping button on the taskbar for page flipping.
5. Task manager: Click the task manager icon  on the toolbar. On the displayed prompt box, select the application to be closed, and then click **End** to stop this application. To go to this application, click **Go to**. To exit the task manager, click **Close**.
6. Power off: Click the power-off icon  on the desktop. On the displayed prompt box, click **Exit** to exit the system. To go back to the system, click **Return**.



1. Internet Access Express

The Internet access express is a kind of browser, also called the firefox browser. This browser allows the user to open multiple pages in the same window and does not limit the page quantity. The system resource occupation rate is relatively low. Its major functions include webpage browsing, webpage saving, online video, and opening pictures or files.

1) To open Web Browsing, click the **Web Browsing** icon on the desktop, as shown in Figure 1:



Figure 1


2) Enter the web page address to be visited in  on the interface in Figure 1. For example, access <http://www.google.com>. The homepage of Google is opened in the window, as shown in Figure 2:



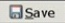
Figure 2

3) You can open multiple web pages in the Web Browsing, but only currently browsed window is displayed. To create a window, select **File** → **New tab** in the menu. To switch between different tab pages, click the related tab. The tab browsing interface is shown in Figure 3:



Figure 3

To close the current tab page, select **File** → **Close tab** in the menu.

- To close the Web Browsing window, select **File** → **Close window** in the menu.
- (4) To save the favorite web page in the desired mode, select **File** → **Save page as** in the menu, as shown in Figure 4. Enter the file name to be saved, select the saving directory, and click the  button to save the file.

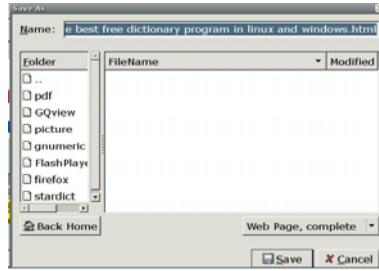
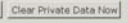


Figure 4

- 5) For the personal private information stored in the browser, the Web Browsing provides the **Clear Private Data** function through the **Tools** menu. Select **Tools** → **Clear Private Data** in the menu, to display the window shown in Figure 5. Check the data to be cleared, and click the  button to clear the personal private information.

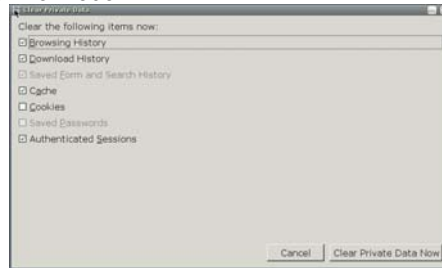


Figure 5

- 6) The bookmark management function of Web Browsing is equal to the My Favorite function of Windows IE, but it is more powerful. To open the powerful bookmark manager, select **Bookmarks** → **Organize Bookmarks** in the menu. With this function, You can add a bookmark to the current page or manage bookmarks. Just experience the specific operation by yourself!
- 7) You can watch flash programs online by using the Web Browsing browser. When you browse web pages, Web Browsing can display animated pictures on the web page or play the online flash program. You can click to play the flash program, as shown in Figure 6:



Figure 6

- 8) To obtain the help information of Web Browsing, select **Help** → **Help Contents** in the menu, as shown in Figure 7.



Figure 7

For more information about Web Browsing, visit <http://www.mozilla.com/en-US/>.

2. Email Box

Email Box is a client email receiving and sending manager that can be operated easily just like Outlook. If you have ever operated Outlook, you can use Email Box as easy as turning your hand over.

- 1) Click to open the Email Box application on the desktop, as shown in Figure 1:

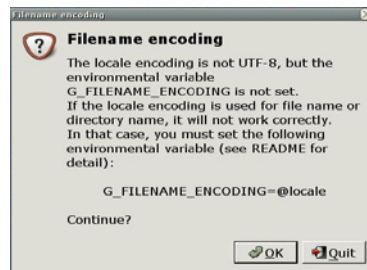

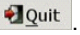


Figure 1

The interface shown in Figure 1 will be displayed only when Email Box is opened for the first time. Click  on this interface to enter the Email Box, as shown in Figure 2. To exit the Email Box, click .

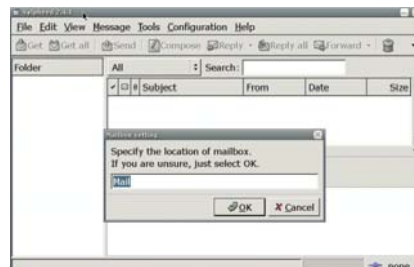



Figure 2

Click  on this interface, to enter the interface for setting the user account, as shown in Figure 3. Set the personal account as prompted by the options on the interface.

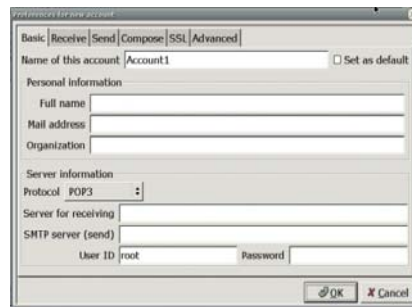


Figure 3

- 2) For example, set the account anywhere@126.com, as described below:
- 1) Fill in the following content on the **Basic** tab page of the interface in Figure 3, as shown in Figure 4:

Name of this account: anywhere (you can fill your desired name)

Full name: anywhere

Mail address: anywhere@126.com (the email box to be set, namely, the email box to be managed by using Email Box)

Protocol: POP3 (depending on the email box set by the user; here the POP3 for the 126 email box is used)

Server for receiving: pop.126.com (depending on the email box set by the user; here pop of the 126 email box is used to receive emails)

SMTP server (send): smtp.126.com (depending on the email box set by the user; here smtp of the 126 email box is used to send emails)

User ID: anywhere

Password: ***** (the email box password set by the user; here the password for anywhere@126.com is used)

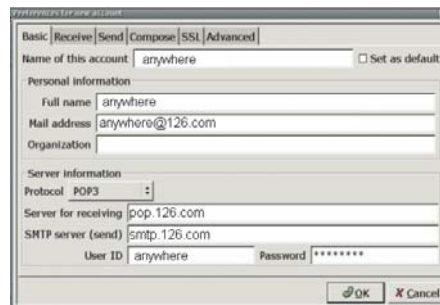


Figure 4

- 2) Fill in the following content on the **Receive** tab page of the interface in Figure 3, as shown in Figure 5:
Check **Filter messages on receiving** (you can select it as needed. Here it is selected).
Default inbox: inbox (the default inbox; you can also select another one)

Check 'Get all' checks for new messages on this account.



Figure 5

- 3) Fill in the following content on the **Send** tab page of the interface in Figure 3, as shown in Figure 6:

Check **SMTP Authentication (SMTP AUTH)** (this option must be selected, because SMTP is used to send emails here).

Authentication method: Automatic

User ID: anywhere

Password: ***** (the email box password)



Figure 6

- 4) Fill in the following content on the **Compose** tab page of the interface in Figure 3, as shown in Figure 7:

Direct input: anywhere@126.com

Fill in the relevant email addresses in **Cc**, **Bcc** and **Reply-To** as needed. Here, no email address is filled in.

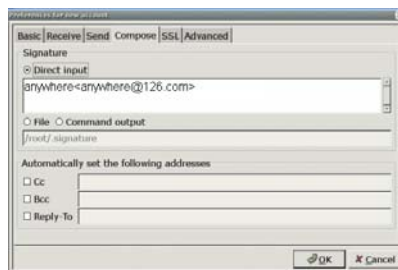


Figure 7

- 5) Fill in the following content on the **SSL** tab page of the interface in Figure 3, as shown in Figure 8:
 Check **Don't use SSL** under **POP3**.
 Check **Don't use SSL** under **SMTP**.

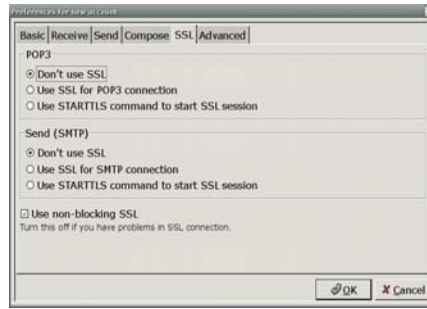


Figure 8

- 6) Fill in the following content on the **Advanced** tab page of the interface in Figure 3, as shown in Figure 9:
 Check **Specify SMTP Port: 25** (SMTP port 25 is used for the 126 email box. You can fill in a different port number according to the email box type).
 Check **Specify POP Port: 110** (POP port 110 is used for the 126 email box. You can fill in a different port number according to the email box type).
 Check **Put sent message in**, and then click **...** to select the location for saving the sent email. Here the **sent** folder is selected.
 Check **Put draft message in**, and then click **...** to select the location for saving the draft email. Here the **draft** folder is selected.
 Check **Put queued message in**, and then click **...** to select the location for saving the queued email. Here the **queue** folder is selected.
 Check **Put deleted message in**, and then click **...** to select the location for saving the deleted email. Here the **trash** folder is selected.

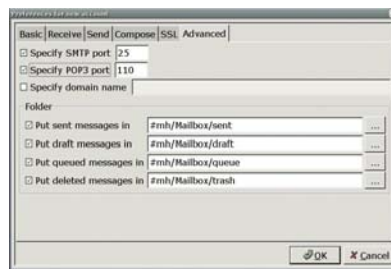


Figure 9

By now, you have performed the relevant settings for the email box anywhere@126.com. Then, click **OK** on the interface in Figure 9.

- 3) Edit the account information, as shown in Figure 10.



Figure 10

After the above settings in Steps 1 and 2, the **Edit accounts** interface will display the **anywhere** account. You can click **+ Add** on this interface to add an account, click **Edit** to edit an existing account, click **Delete** to delete an existing account, click **Up** and **Down** to sort the existing accounts, and click **Set as default account** use the selected account as the default account.

- 4) To enter the main interface of Email Box, click **Close** on the interface in Figure 10, as shown in Figure 11.

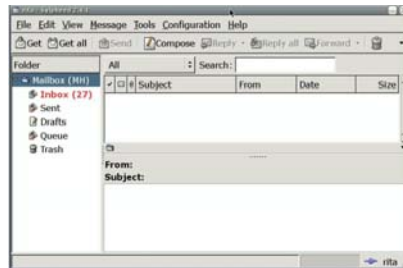


Figure 11

To get the email in the email box anywhere@126.com just set, click **Get** or **Get all** on the interface in Figure 11, as shown in Figure 12.



Figure 12

To cancel the ongoing operation of receiving email, click **Cancel** on the interface in Figure 12.

Now, you have a general idea about how to use the Email Box email client. Email Box is used basically the same as Outlook. If you are an Outlook user, you will get familiar with Email Box soon.

For more information about Email Box, visit <http://www.Email.Box.sraoss.jp/>.

3. Instant Communication

Instant Messaging is an instant communication tool, which enables multiple persons to communicate with each other at the same time. It provides multiple protocols for the user.

1. Configuring AIM at Pidgin
 - 1) Click to open **Pidgin**.
 - i. Click **Accounts** → **Add/Edit** to display the window as shown in Figure 1.



Figure 1

- ii. Click the **Add** button on the interface in Figure 1, to display the **Add Account** window, as shown in Figure 2. Configure as follows:

- **Protocol: AIM**
- **Screen name:** Your AIM username (excluding the symbol @ or network domain)
- **Password:** To increase the security, you are recommended to leave this field null. To log in automatically, enter your password.
- **Local alias:** Leave this field null.
- **Remember password:** To let Pidgin remember your password, check this box (after this option is selected, the system will not prompt you to enter the password when you log in to the system).



Figure 2

- iv. Click **Save** to save the setting.
Congratulations! Now, you can connect to the AIM service using Pidgin.
2. Configure Google Talk (XMPP) at Pidgin
 - a) Open Pidgin.
 - b) Click **Accounts** → **Add/Edit** to display the window as shown in Figure 1.
 - c)



Figure 1

1. Click the **Add** button on the interface in Figure 1, to display the **Add Account** window, as shown in Figure 2 and Figure 3. Configure as follows:

- ◆ **Protocol: Google Talk**
- ◆ **Screen name:** Your Google Talk username (excluding the symbol @ or network domain)
- ◆ **Domain: gmail.com**
- ◆ **Resource: Gaim**
- ◆ **Password:** To increase the security, you are recommended to leave this field null. To log in automatically, enter your password.
- ◆ **Local alias:** Leave this field null.
- ◆ **Remember password:** To let Gaim remember your password, check this box (after this option is selected, the system will not prompt you to enter the password when you log in to the system).



Figure 2

- 1 Click the Advanced tag, and configure as follows on this tab:
Connect port: 5222
Connect server: talk.google.com
Proxy Options: Use Global Proxy Settings



Figure 3

- ⑤ Click **Save** to save the setting.

Congratulations! Now, you can connect to the Google Talk service using Pidgin.

The above part just simply introduces the usage of Instant Messaging. You need to use it by setting other protocols.

4. 4. Word Processor

Xip Word is a set of free word processing software based on Open Office. It can process almost all the prevailing types of documents in the world.

- 1) Click the Xip Word icon on the desktop to open the Xip Word program. Select **File** → **Open** from the menu, and then select and open the desired file on the displayed interface, as shown in Figure 1:

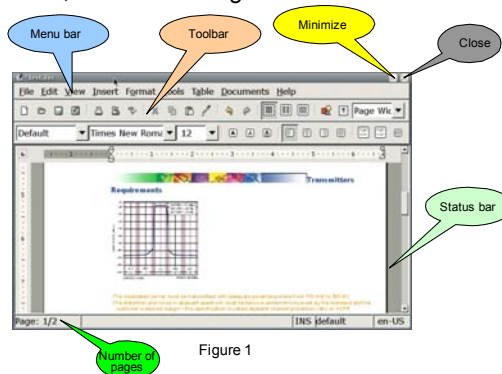


Figure 1

- 2) Xip Word supports to open the files in the doc., abw., dot., rt., txt., zabw., htm, html. and xhtm formats. You can also save your file in these formats.
- 3) After entering the relevant content in the word area, you can select **Edit** → **Undo** in the menu to cancel the operation you just performed, or select **Edit** → **Redo** in the menu to redo the operation you just canceled. With Xip Word, you can select **Cut**, **Copy** and **Paste** to perform relevant operations. To search the relevant content, select **Edit** → **Find** in the menu. To replace the found content, select **Edit** → **Replace** in the menu.
- 4) To set the required display format at Xip Word and the toolbar and status bar to be displayed, select **View** in the menu. To enter the full screen display status, press **F11** or select **View** → **Full Screen** in the menu. To zoom in or zoom out the file, select **View** → **Zoom** in the menu.
- 5) Make the edited file more neat

- To add a page header and a page footer to the file, select **Insert** → **Header (Footer)** in the menu.
 - To add a background or a background color to the file, select **Format** → **Page Background** in the menu.
 - To insert a picture into the file to illustrate the file, select **Insert** → **Picture** in the menu.
- 6) Table usage in Xip Word
- To insert a table or insert a row and a column in the original table, select **Table** → **Insert** in the menu.
 - To delete a table, a row, a column or a cell, select **Table** → **Delete** in the menu.
 - To select a table, a row, a column or a cell, select **Table** → **Select** in the menu.
 - To merge cells, select **Table** → **Merge Cells** in the menu.
 - To split cells, select **Table** → **Merge Cells** in the menu.
 - To convert a table to a text file, select **Table** → **Convert Table to Text** in the menu.
 - To convert a text file to a table, select **Table** → **Convert Text to Table** in the menu.

The following example details how to edit a file by using Xip Word:

Step 1: Enter **Welcome to Xip Word**, and select it. Click **Format** → **Align** → **Center** in the menu. Now, the content will be displayed at the center of the row in the editing area, as shown in Figure 2:

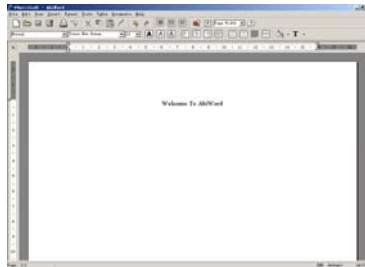


Figure 2

Step 2: Press Enter, and select **Format** → **Align** → **Left** in the menu. The cursor will be displayed at the leftmost part of this row. Click **Table** → **Insert** → **Table** in the menu, to display the window as shown in Figure 3.

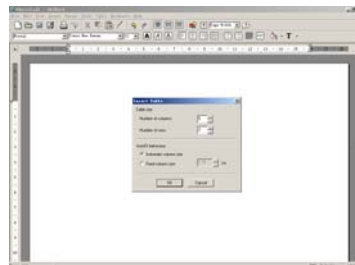


Figure 3

Step 3: Enter **5** in the **Number of columns** box and **2** in the **Number of rows** box, and then click the **Insert** button. You can see a table consisting of 2 rows and 5 columns in the editing area, as shown in Figure 4.

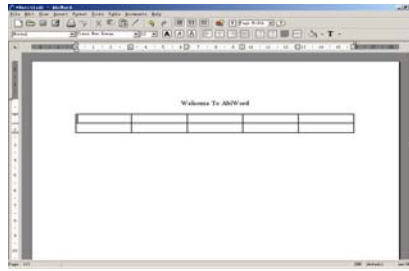


Figure 4

Step 4: Now you can enter content in the table. Then, select the table and right click. On the displayed shortcut menu, select **Font**. Here, you can set the font size, type can color (red in this example), as shown in Figure 5.

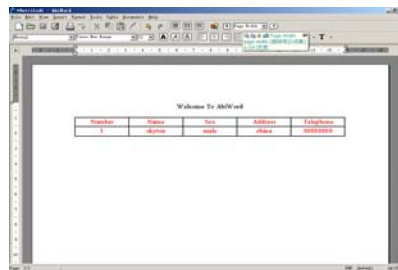


Figure 5

Step 5: After the table is prepared, click **Insert** → **Text Box** in the menu. The cursor changes to a cross shape. Drag the cursor downward by pressing the left key of the mouse to make a text box in the editing area, as shown in Figure 6.

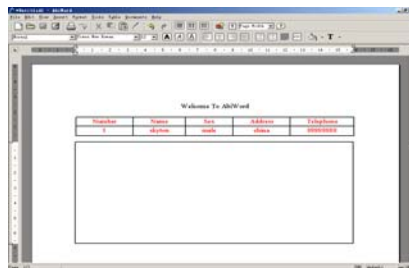


Figure 6

Step 6: You can enter the relevant content or insert a picture in the text area. To insert a picture, select **Insert** → **Picture** in the menu, select a picture from the displayed window, and then click the **Open** button. The final result is shown in Figure 7.



Figure 7

Step 7: To perfect the file, click **Insert** → **Header** in the menu to insert a header. Enter the relevant content, and click in the blank area. You will see a header displayed at the upper right corner, as shown in Figure 8.



Figure 8

Step 8: A simple file is prepared, but it may look better if a background is also added. Xip Word also provides this function. Select **Format** → **Page Background** → **Page Image** in the menu, and select a picture to be inserted from the displayed window. The final result is shown in Figure 9.

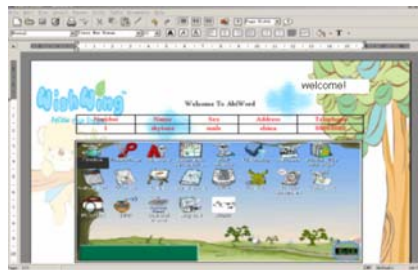


Figure 9

Step 9: Now, a nice-looking file is in front of you. However, remember to save the file by selecting **File** → **Save** in the menu. Do you want to share this file with others? That's easy. The printing function provided by Xip Word can help you easily. Select **File** → **Print** in the menu, and click the **Print** button in the displayed window to print the file.

Now, you have a general idea about how to use Xip Word. Xip Word is used basically the same as Microsoft Word. If you are a Microsoft Word user, you will get familiar with Xip Word soon.

For more information about Xip Word, please visit <http://www.abisource.com>.

5. E-table

Xip Table is an e-table software, with the style and functions rather consistent with the current Excel.

- 1) Click the **Xip Table** icon on the desktop to open Xip Table, as shown in Figure 1.

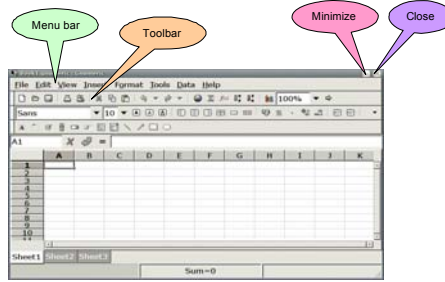


Figure 1

- 2) Xip Table provides the user with the table drawing and powerful data calculation functions. The following example describes how to draw a sales count table using Xip Table.

Step 1: Confirm the area for drawing the table on the interface in Figure 1. Here, A1:E9 is selected.

Step 2: Select the relevant cells and enter data, as shown in Figure 2.

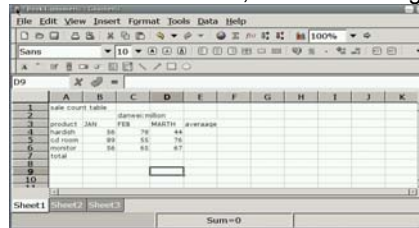


Figure 2

Step 3: Get the sums and averages using the functions provided by Xip Table. First select the target cell to store the calculation result, insert the function in the target cell, and then select the area for calculation, as shown in Figure 3 and Figure 4.

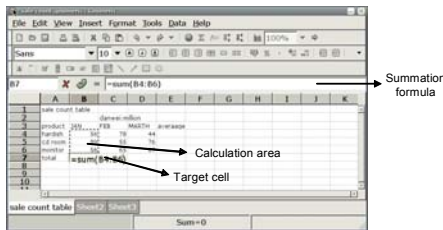


Figure 3

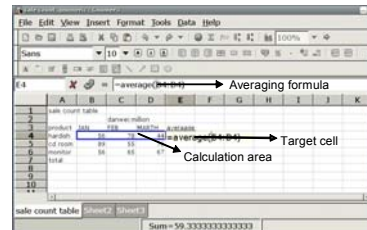


Figure 4

Step 4: You can also more visually show the sales information by making a pie chart or a histogram based on the data in the sales table. Select **Insert** → **Chart** in the menu, select the chart type to be inserted in the displayed dialog box, and then the click **Insert**, as shown in Figure 5.

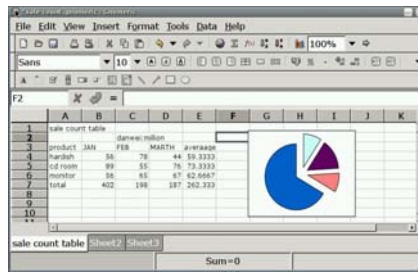


Figure 5

Thus, a pie chart of the sale statistics table is prepared.

- 3) Draw a graphics through the buttons on the toolbar in the interface of Figure 1. To draw a rectangle in the work table, click the button on the toolbar. The cursor changes to a cross shape. Drag the cursor by pressing the left key of the mouse in the work table to select the area for drawing a rectangle, and loosen the left key. Then, a required rectangle is drawn.

For more information about Xip Table, please visit <http://www.gnumeric.org>.

6. E-dictionary

Dictionary is a set of configurable desktop dictionary software, excluding the dictionary. The user needs to download a dictionary to be used together with the software. Dictionary provides lots of functions, including dictionary downloading, word searching, screen word capturing, wildcard query, and fuzzy query.

- 1) Click the **Dictionary** icon on the desktop to open Dictionary, as shown in Figure 1.

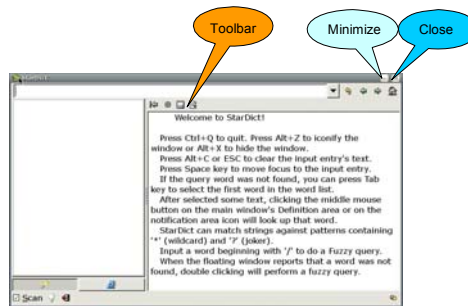



Figure 1

- 2) Enter the word to be searched in on the interface in Figure 1. The window will display the information of the searched word.
- 3) To get the word that is previously searched, click on the toolbar on the interface in Figure 1.
- 4) To get the previous word and the next word of the current word in the left word list, click and respectively on the toolbar on the interface in Figure 1.
- 5) To add a dictionary, click on the toolbar, select **Manage Dict**, and click on the displayed interface, as shown in Figure 2.

When multiple dictionaries are added, the interface will display the information about the

searched word in all the directories. You can select a proper dictionary as needed. Click  on the interface in Figure 1 to display all the loaded dictionaries, and select the required dictionary.

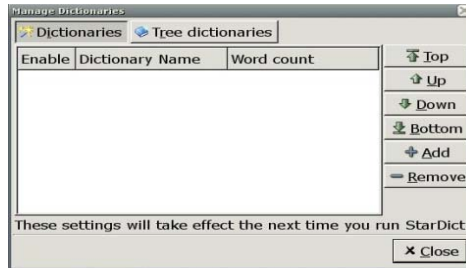


Figure 2

- 6) Check **Scan** on the main interface of Dictionary, to change it into **Scan**. Dictionary will enter the screen word capturing status, and you can select a word by using the cursor in other windows. Double click or highlight a word. A floating window will pop up near the word, to display the meaning of the word.
- 7) To query a word, you can enter the character string containing "*" and "?" as a wildcard for matching. Here, "*" indicates any multiple characters, and "?" indicates a character. Press **Enter**, to display the word that matches this rule in the left list box. This method can be used to query all the matched words. You can find the queried word in the left list box, as shown in Figure 3.



Figure 3



- 8) If you are uncertain about the exact spelling of a word, try the fuzzy query function of Dictionary. If the entered word is incorrect, Dictionary will provide the matching result of similar words in the list box. To display the meaning of the previous word or the next word in the meaning display list box, click  or  on the toolbar, as shown in Figure 4.



Figure 4

Just get to know how to use Dictionary in the practice.

7. PDF Viewer

PDF Viewer is a PDF file viewer, which helps you to fast view the PDF file and can print and manage the viewed PDF file.

- 1) To open the program, click the **PDF Viewer** icon on the desktop. Click **File** → **Open** in the menu, select a file, and click the **Open** button. The displayed interface is shown in Figure 1.

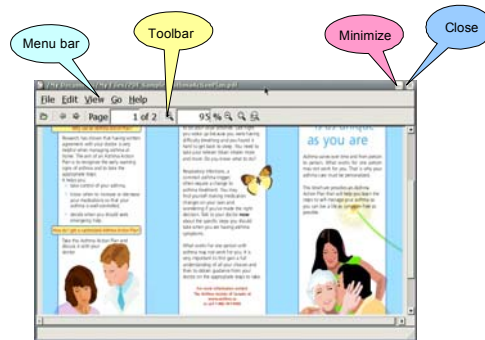


Figure 1

- 2) To save a copy for the opened PDF file, select **File** → **Save a Copy** in the menu. To open the Print manager, select **File** → **Print**. Here, you can set the relevant option of the printer, and then click the **Print** button to complete printing.
- 3) Setting your PDF Viewer interface
To set if the toolbar, status bar and index are displayed on the current interface, select the **View** menu option. To zoom in or zoom out the PDF file, select the **Zoom** option under the **View** menu option. To rotate the file to the right (left), click **View** → **Rotate Right (Left)** in the menu. To enter the full screen display status, press **F11** or select **View** → **Full Screen** in the menu.
- 4) Fast checking a PDF file
To fast find the desired content, select **Edit** → **Find** in the menu, or select the **Page** option on the toolbar to rapidly go to the desired page.
- (5) To obtain the help information of PDF viewer, select **Help** → **About** in the menu. Click the following address in the displayed window to enter the PDF Viewer website for more help information:

<http://www.emma-soft.com/project/epdfview>

8. E-book Reader

As an e-book reader, FB Reader can be used to read e-books in formats such as fb2, HTML, CHM, plucker, Palmdoc, zTxt, TCR, RTF, OEB, OpenReader, Non-DRM'ed mobipocket and Plain text. Its simplified interface provides powerful functions. After FB Reader is opened, the main interface will detail FB Reader. The following part describes how to use FB Reader:

- 1) Click the **FB Reader** icon on the desktop to display the interface, as shown in Figure 1.

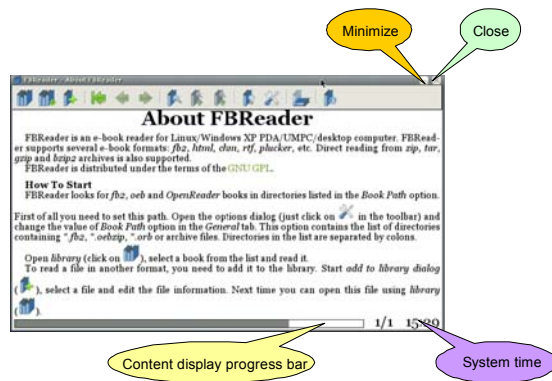



Figure 1

The interface in Figure 1 displays the information about FB Reader, to enable the user to learn about FB Reader. The interface displays the content display progress and the current system time.

- 2) Click the  button on the interface in Figure 1, to display the option interface of FB Reader, as shown in Figure 2. This interface is used to perform relevant settings for the file to be opened. You can select relevant options as needed.

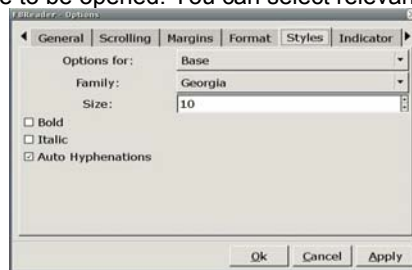



Figure 2

On the interface in Figure 2, you can set the font, color, font size, margin, scrolling bar and other aspects of the opened e-book.

- 3) Click the  button on the interface in Figure 1, and select the e-book path and e-book to be read. Here, /my document/my file/FBreader/myman-5.0.3-alpha.chm is opened, as shown in Figure 3.

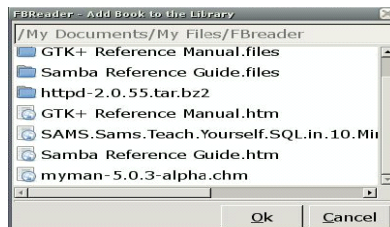


Figure 3

Click **myman-5.0.3-alpha.chm** on this interface, to display the **Book Info** interface, as shown in Figure 4. The **Book Info** interface introduces some related information of the e-book. You can perform the relevant setting as needed.



Figure 4

No setting is performed here. Directly click the **Ok** button on the interface in Figure 4. Now, you can read the content of myman-5.0.3-alpha.chm, as shown in Figure 5.

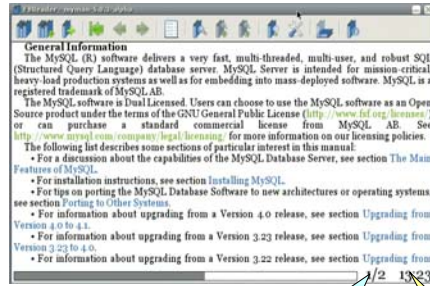











Figure 5
 2 pages in total the content of page 1 is being displayed
 Current system time

- ① Click the  button to display the related information of the currently opened book.
- ② Click the  button to search the related information in the currently opened book.
- ③ Click the  button to list the contents of the currently opened book.
- ④ Click the  button to rotate the currently opened book. The rotation degree is set by the user.
- ⑤ Click the  button to return to the initial location of the opened book.
- ⑥ Click the  button to go back.
- ⑦ Click the  button to go forward.
- ⑧ Click the  button to list the recently opened ebook list.
- ⑨ Click the  button to list the tree structure of the book library.

The usage of FB Reader is just briefed here. Please gradually grasp how to use it in the practice.

9. Xip Flash Player

As a flash player, Xip FlashPlayer is used to play flash animation. The Xip FlashPlayer of SW-T700 is in three play modes: normal, low quality and half size.

- 1) Click the **Xip FlashPlayer** icon on the desktop to open Xip FlashPlayer, as shown in Figure 1.

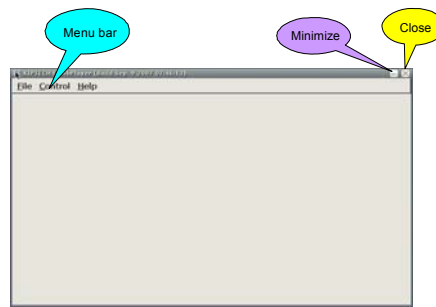
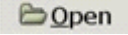


Figure 1

- 2) Select **File** → **Open** in the menu on the interface in Figure 1, to display a dialog box. Select the flash file to be played, and then click the  **Open** button in the dialog box to play the flash file, as shown in Figure 2.

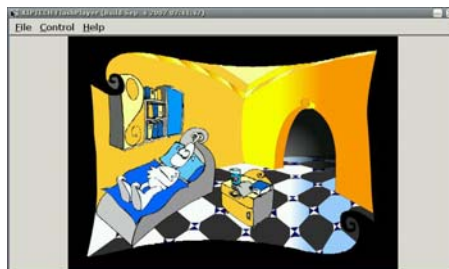


Figure 2

- 3) To play the flash file in the low quality play mode, select **Control** → **Low quality** in the menu, as shown in Figure 3.



Figure 3

- 4) To play the flash file in the half size play mode, select **Control** → **Half size** in the menu, as shown in Figure 4.



Figure 4

- 5) To stop playing the currently played flash file, select **File** → **Close** in the menu. For more information about Xip FlashPlayer, please visit <http://www.xiptech.com>.

10. Multimedia Player

As a multimedia player, Media Player can be used to play files of mp3, avi, wma and other formats.

- 1) Click the **Media Player** icon on the desktop to open the interface, as shown in Figure 1.

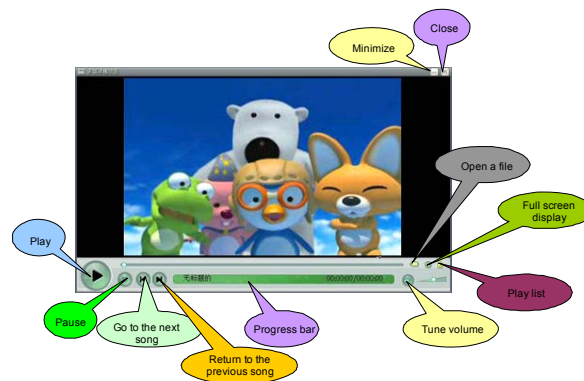


Figure 1

- 2) Simplified playing of multiple types of files
 In the past, each type of media file format requires an independent player, and you must download and configure these players.
 With Media Player, you need not bother about configuration of each player. Media Player can support playing of mp3, wma, wav, wmv, asf, avi, mpg, mpeg, mp2, mp4, mov and other video formats.
- 3) Easy customization to satisfy your personal taste
 When a movie is played, you can suspend playing, tune the volume, or go to your favorite part by fast forwarding or rewinding. You can even enlarge the picture to the full screen.
- 4) High quality multimedia enjoyment
 Media Player can provide the continuous watching effect even the file in multiple media types is played.

The following example describes how to operate Media Player:

Step 1: Double click the **Media Player** icon on the desktop to open the interface, as shown in Figure 1.

Step 2: Click the button for opening a file to display the interface, as shown in Figure 2.

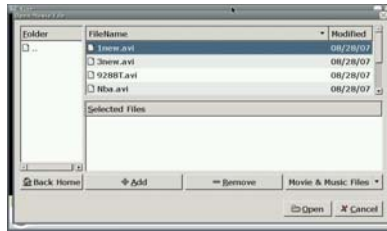


Figure 2

Step 3: Select a video file, and click the **Add** button to add the video file to the **Selected Files** box. If you cannot find the desired file in the folder, click the **Movie&Music Files** button and select **All Files**, as shown in Figure 3.

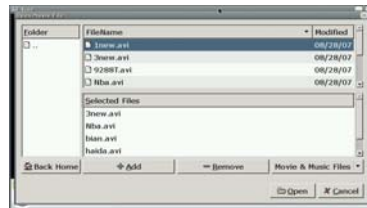


Figure 3

Step 4: Click the **Open** button to return to the main interface of Media Player. Click the playing button to play the video file, as shown in Figure 4.



Figure 4

Step 5: During the playing process, you can tune the volume or click the play list button or press **F11** to display the play list. Select the video file to be played from the play list, as shown in Figure 5.



Figure 5

Step 6: You can click the play button again to suspend playing, or browse the movie or select the desired part by dragging the progress bar or pressing the fast forwarding or rewinding button. Click the full screen play button to play the movie in the full screen, as shown in Figure 6.



Figure 6

Step 7: To exit the full screen display, click the title bar in the above, and then press **F11** or **ESC**.

For more information about Media Player, please visit <http://xinehq.de/index.php/features>.

11. Image Browser

Image Gallery is an image viewing tool that can be easily operated. It supports a big variety of image browsing functions, including thumbnail generating, zoom-in and zoom-out functions.

- 1) Click the **Image Gallery** icon on the desktop to open Image Gallery and also open the image tga2.tga, as shown in Figure 1:

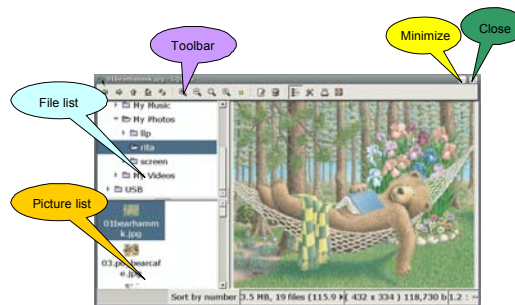




Figure 1

- 2) Open the folder where the images are located, and click to browse the images in this folder.

To view the previous image of the currently opened image, click the  icon on the toolbar.

To view the next image of the currently opened image, click the  icon on the

toolbar.








- 3) As needed, click the  /  /  /  icon on the toolbar to zoom in/zoom out/adjust the image size to a proper window/set the image length and width proportion to 1:1.
- 4) Click the  button on the toolbar, or right click and select **Delete** from the shortcut menu. On the displayed dialog box, click the  button to delete the file, or click the  button to cancel the deleting, as shown in Figure 2.



Figure 2





- 5) To rename an image, click the  button on the toolbar, or right click and select **Rename** from the shortcut menu. On the displayed dialog box, enter the new file name, and click the  button to confirm, or click the  button to cancel the operation, as shown in Figure 3.



Figure 3

- 6) To display the image in full screen, click the  button on the toolbar, or right click and select **Full Screen** from the shortcut menu. To exit the full screen display, right click and select **Exit Full Screen** from the shortcut menu.
- 7) Image Gallery supports image editing using other editors. Right click and select the related option from the shortcut menu. Open the image in the editing tool and edit it.
- 8) To set the image as wallpaper, right click and select **Set as Wallpaper** from the shortcut menu.
- 9) To play images in the slidershow mode, open an image using Image Gallery, right click and select **Start Slideshow** from the shortcut menu.

To pause slideshow, right click and select **Pause Slideshow** from the shortcut menu. To continue slideshow, select **Continue Slideshow** from the shortcut menu. To stop slideshow, select **Stop Slideshow** from the shortcut menu.

For more information about Image Gallery, please visit <http://Image Gallery.sourceforge.net>.

12. Calculator

You can use Calculator to perform all the standard operations that can be completed using a handheld calculator. Calculator can execute all the basic operations, such as addition, subtraction, multiplication and division, as well as functions of the scientific calculator, like square and factorial.

Click the **Calculator** icon on the desktop to open the interface, as shown in Figure 1.

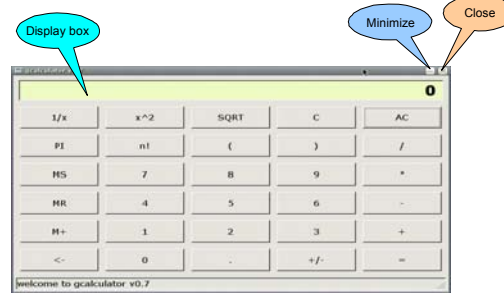


Figure 1

- 1) Executing a simple calculation
 - Key in the first number for calculation
 - Click **+** for addition, **-** for subtraction, ***** for multiplication and **/** for division.
 - Key in the next number for calculation
 - Enter the other operators and numbers.
 - Click **=**.
- 2) Using the numbers stored in the memory
 - To store the displayed data, click **MS**.
 - To recall the stored data, click **MR**.
 - To add the displayed number to the existing number in the memory, click **M+**.
 - To check a new number, click **MR**.
- 3) Executing scientific calculation
 - Key in a number, and click the **n!** button to get the factorial of this number.
 - Key in a number, and click the **x^2** button to get the square of this number.
 - Key in a number, and click the **SQRT** button to get the extraction of this number.
 - Key in a number, and click the **1/x** button to get the reciprocal of this number.

For more information about Calculator, please visit <http://www.calculator.com>.

13. Painting at Will

Paint Bursh is a drawing tool, which helps the user to create simple or elaborate images. These images can be black and white or colorful, and saved in the .JPG and .PNG forms. The image can be used as wallpaper or pasted to another file. The scanned photo can

also be checked and edited using the relevant function.

To open the program, click the **Paint Bursh** icon on the desktop. Click the **Lode new image** button on the toolbar, select a file and click **Open**, to display an interface, as shown in Figure 1.

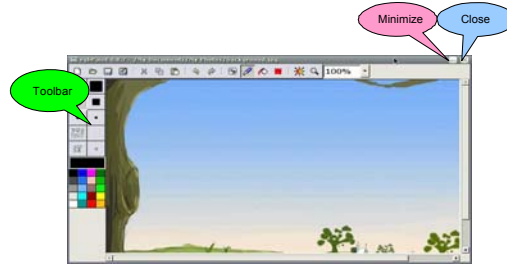


Figure 1

- 1) Creating an image
 - Click the **Paint Bursh** button on the toolbar. By default, you can draw a line by pressing the left key of the mouse and dragging the cursor.
 - Click the round black button in the toolbox. A small box appears under the pencil. Click to draw a circle.
 - Click the square black button in the toolbox. A small box appears under the pencil. Click to draw a square.
 - Other round and square buttons with different sizes are available in the toolbox. Click them to draw the related circles and squares with various sizes.
 - Click the **Paste Text** button on the toolbar, and key in text in the image.
- 2) Applying colors
 - Select colors from the toolbox to paint your image colorful.
 - Click the fog spot button in the toolbox, to get a spraying effect in the drawing.
 - Click the **Flood Fill** button on the toolbar to fill color in the selected area.
 - To customize your color, click the color button in the toolbar.
- 3) Processing an image
 - To select a rectangle area, click **Make Selection** on the toolbar.
 - To specify the area to be displayed, click **Pan Window** on the toolbar.
 - To select the rectangle area to be copied or cut, click **Make Selection** on the toolbar. Drag cursor by pressing the left key of the mouse to define the area to be copied or cut. Click the **Paste** button on the toolbar to paste the area.
 - To cancel/redo your operation, click the **Undo/Redo** button on the toolbar.

For more information about Paint Bursh, please visit <http://mtpaint.sourceforge.net/rgbpaint.html>.

14. Calendar

Calendar is a scheduling and management program. Its major functions include event management, event creating, event saving, event opening, event editing, event deleting, event moving and reminding.

Calendar management: creating a calendar category, editing a calendar category and deleting a s calendar category.

Calendar interface management: time scope setting (day, week, month or agenda) of calendar display.

Content scope setting (toolbar, calendar, calendar selector and agenda) of the interface display.

- 1) Click the **Calendar** icon on the desktop to open Calendar, as shown in Figure 1.

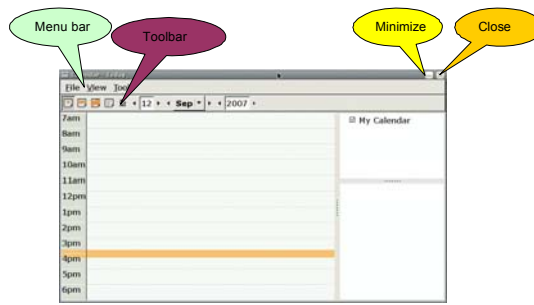


Figure 1

- 2) Select **File** → **New** from the menu, to display the **New event** dialog box. Enter the event related items in the dialog box, and click the **Save** button to create a new event, as shown in Figure 2.



Figure 2

- 3) Right click **Start 2:45, ends 3:45** of the event, and select **Save** on the shortcut menu. In the displayed dialog box, enter the file name to be saved, select a saving directory, and click the **Save** button to save the file, as shown in Figure 3.



Figure 3

- 4) To edit the event, right click on **Start 2:45, ends 3:45**, and select **Edit** from the shortcut menu.
- 5) To delete an event, right click on **Start 2:45, ends 3:45**, and select **Delete** from the shortcut menu. In the displayed dialog box, click **Delete**, as shown in Figure 4.

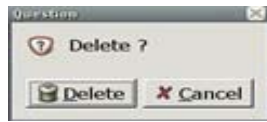




Figure 4

- 6) Select **Tools** → **Calendars** from the menu, to display the window as shown in Figure 5.



Figure 5

To create a new calendar category, click the  button. On the displayed interface, enter the related content as prompted, and click the  button to save the new calendar category, as shown in Figure 6.

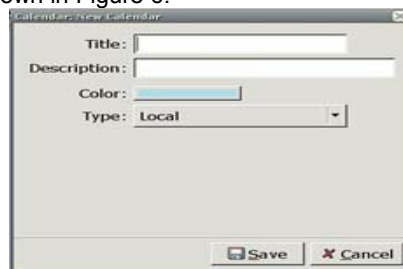


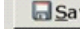


Figure 6

- 7) To edit the calendar category (e.g., **My Calendar**), click the  icon in  on the interface in Figure 6. Perform the relevant modification in the displayed dialog box, and click the  button to save the modification, as shown in Figure 7.

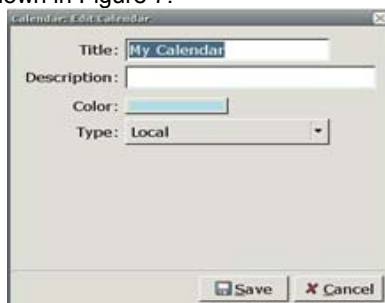


Figure 7









- 8) To delete a calendar category (e.g., **My Calendar**), click the  icon in the **My Calendar** menu on the interface in Figure 6. In the displayed dialog box, click the  button to confirm, or click the  button to cancel the operation, as shown in Figure 8.



Figure 8

- 9) To set the calendar display time scope, select the relevant items in the **View** menu, or click the , , , and  buttons on the toolbar, or select the time to be displayed from the toolbar.

1. To display the schedule of today, click , as shown in Figure 9.
- 2.

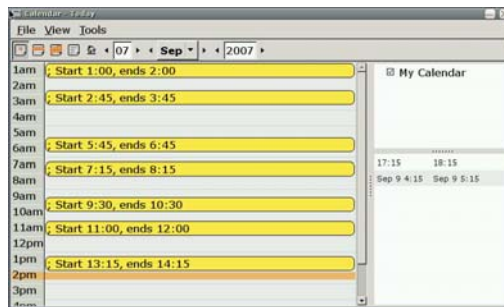



Figure 9

To display the schedule of a week, click , as shown in Figure 10.

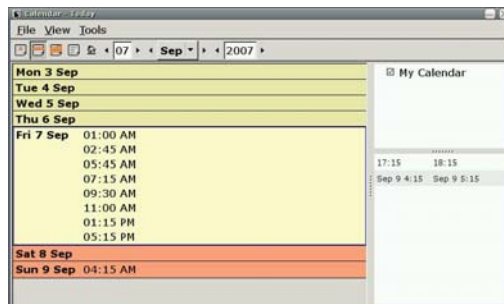



Figure 10

1. To display the schedule of a month, click , as shown in Figure 11.

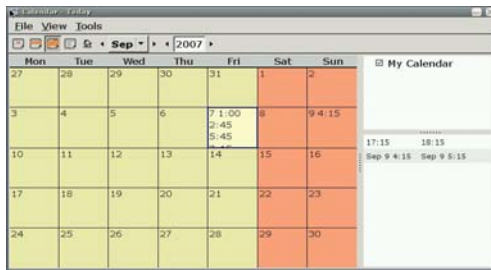



Figure 11

- ④ To display all the schedules, click , as shown in Figure 12.

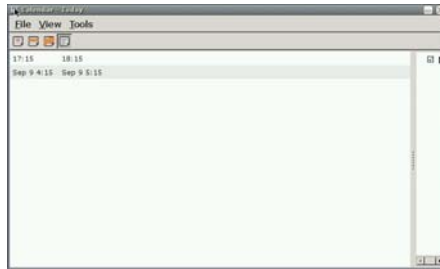


Figure 12

As described above, just use Calendar to manage your schedule.

15. File Manager

File Manager is a fast and light file manager, which safely keeps files saved at the SW-T700. It provides the highly commended Tabbed Browsing feature, user friendly interface, and both the icon checking and list checking modes. It can also display the size of the current folder.

The following part briefs how to use File Manager:

- 1) Click the **File Manager** icon on the desktop to open File Manager, as shown in Figure 1.

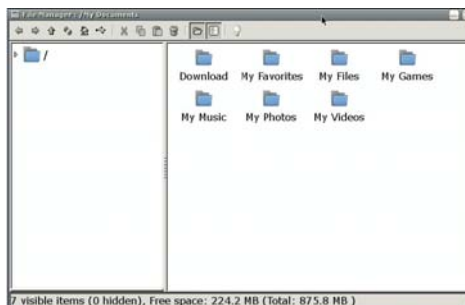




Figure 1

You can see two panes on this interface. You cannot operate the left pane, but can operate the right pane.

- 2) The left pane on the interface in Figure 1 lists the system folders, and the right pane displays the content in each folder after this folder is opened. Click  in front of the  / folder. The interface automatically lists other folders contained in this folder, as shown in Figure 2.

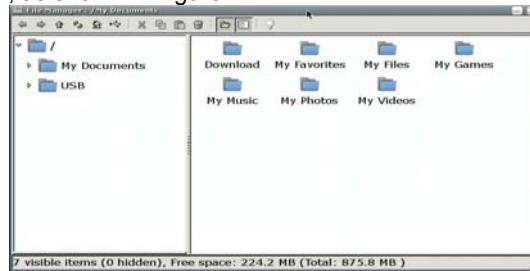





Figure 2

On the interface in Figure 2, you can see the folder  / in the left pane contains two folders:  My Documents and  USB.





- 3) In the left pane on the interface in Figure 2, click  in front of the  My Documents folder. The interface automatically lists other folders contained in this folder, as shown in Figure 3.



Figure 3

On the interface in Figure 3, you can see the folder  My Documents contains these folders: **Download, My Favorites, My Files, My Games, My Music, My Photos** and **My Videos**. The right pane displays all the folders contained in  My Documents.

- 4) Click  in front of the  USB folder in the left pane on the interface in Figure 3. The system automatically lists the content connected to the USB device. If no external USB device is inserted, **No Sub Folder** is displayed, as shown in Figure 4.

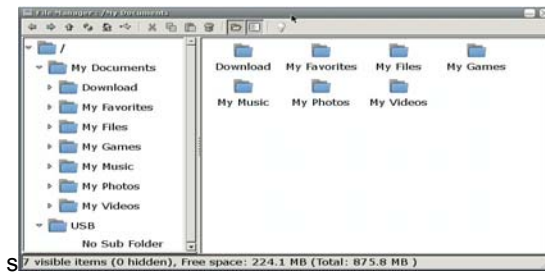


Figure 4

The above content deals with the file management structure of File Manager. The following part describes how to operate using File Manager:

- 1) After you open a folder, you can right click in the right pane, to display an option list. Here, select **Create New** → **Folder**, as shown in Figure 5.



Figure 5

Enter the name of the folder to be created to replace **New Folder** on the interface, such as **anywhere**, and then click **OK**. A new **anywhere** folder will be created in the currently opened **Download** folder, as shown in Figure 6.

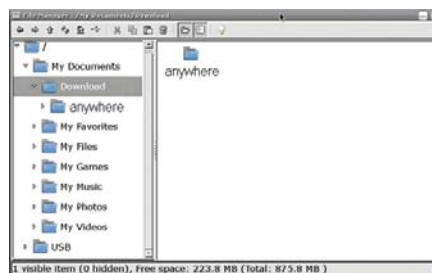




Figure 6

- 2) To minimize File Manager, click the  button on the interface in Figure 1. To close File Manager, click the  button.

Use File Manager as described above.

For more information about PCman file manage, please visit

16. Network Dial-up

1) ADSL dial-up setting

- ① Click the **Network Dial-up** icon on the desktop to open the dial-up setting interface, as shown in Figure 1.



Figure 1

- ② Click the **Properties** button on the interface in Figure 1 to enter the advanced option setting interface, as shown in Figure 2.

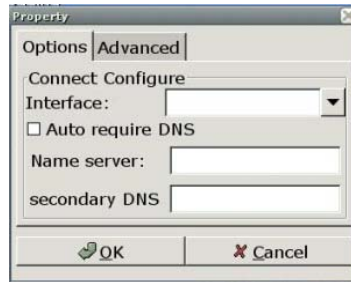


Figure 2

Fill in the content on the interface in Figure 2 according to the actual condition.

After making sure all the settings are correct, click the **Connect** button in the interface in Figure 1 to implement dial-up connection. During the connection, you can click the **Cancel** button to cancel the connection.

2) Wireless network setting

- ① Click the wireless network application on the desktop to open the wireless network interface, as shown in Figure 1.



Figure 1

A prompt box is displayed above the interface in Figure 1, indicating that you have not inserted the wireless network card device.

- ② Insert the USB wireless network card. The icon of the USB wireless network card appears at the lower part of the desktop, and the wireless network interface displays the searching status, as shown in Figure 2 (note: make sure the USB network card functions well).

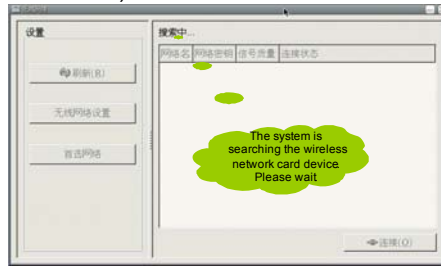


Figure 2

- ③ After the system searches the wireless network card device you inserted, it will list the relevant information currently searched, such as the wireless network name, as shown in Figure 3.



Figure 3

- ④ Add or delete a network, and connect a network as follows:

A. On the interface in Figure 3, click **Wireless Network Setting**, as shown in Figure 4.

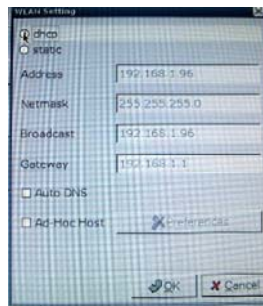


Figure 4

On the interface in Figure 4, select the IP address getting mode (static address or dynamic getting) and whether to automatically get DNS, and set the peer network host.

Then, click the **OK** button to return to the interface shown in Figure 3.

B. On the interface in Figure 3, click the **Preferred Network** button, as shown in Figure 5.



Figure 5

On the interface in Figure 5, add or delete a network, and set the newly added network. For example, select the **Add** and **Delete** buttons. The relevant interfaces are shown in Figure 6 and Figure 7.

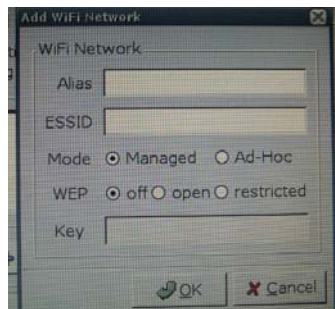


Figure 7

The interface in Figure 7 is identical to that in Figure 6. You can see the **Properties** interface is used to reset the currently existing wireless network.

C. After setting the preferred network, click the **OK** button on the interface shown in Figure 5, to return to the interface shown in Figure 3.

D. Now, you can select a network to be connected from the interface shown in Figure 3. When the selected network is an encrypted network, the interface shown in Figure 8 will pop up to request you to enter the network key to connect to the network.

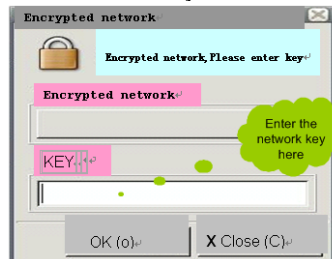


Figure 8

E. On the interface shown in Figure 8, enter the key and click **OK** to connect the network. When the connection starts, the system prompts the network is being connected. When the connection succeeds, the system prompts the network is connected and the IP address is being obtained. When the IP address is obtained, the system prompts the network is connected and the IP address is *.*.*, as shown in Figure 9.



Figure 9

- ⑤ Disconnect the currently connected network.

On the interface shown in Figure 9, select the connected network, and then click **Disconnect** to rapidly disconnect the current network connection.

- 3) Mobile dial-up setting
4) CDMA dial-up setting

Click the **Mobile Link** icon on the desktop to open the wireless dial-up setting interface, as shown in Figure 10.

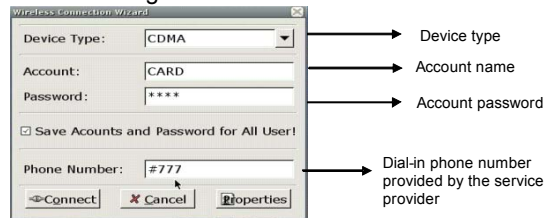


Figure 10

Correctly fill in information in each item on the interface in Figure 10.

Click the **Properties** button on the interface in Figure 10 to enter the advanced option setting interface, as shown in Figure 11.



Figure 11

Fill in the content on the interface in Figure 11 according to the actual condition.

After making sure all the settings are correct, click the **Connect** button on the interface in Figure 10 to implement dial-up connection. During the connection, you can click the **Cancel** button to cancel the connection.

5) GPRS dial-up setting

Double click the **Mobile Link** icon on the desktop to open the wireless dial-up setting interface, as shown in Figure 12.

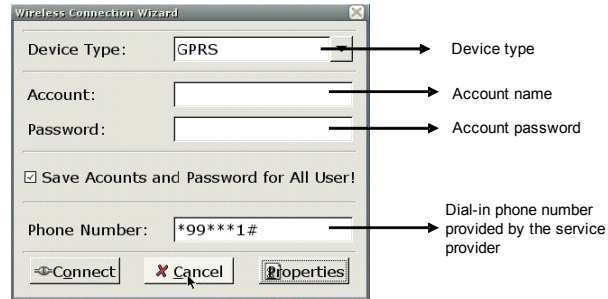


Figure 12

Correctly fill in the information in each item on the interface in Figure 12.

Click the **Properties** button on the interface in Figure 12 to enter the advanced option setting interface, as shown in Figure 13.

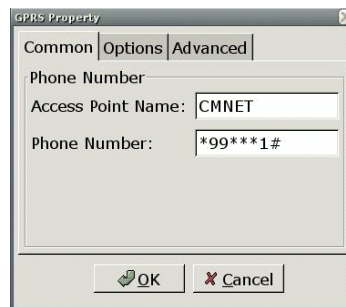


Figure 13

Fill in the content on the interface in Figure 13 according to the actual condition. After making sure all the settings are correct, click the **Connect** button on the interface in Figure 10 to implement dial-up connection. During the connection, you can click the **Cancel** button to cancel the connection.

17. Software Manager

The software manager is used to add or delete applications. You can only click to install

or uninstall a related application.

- 1) Click the software manager application on the desktop, to display an interface, as shown in Figure 1.

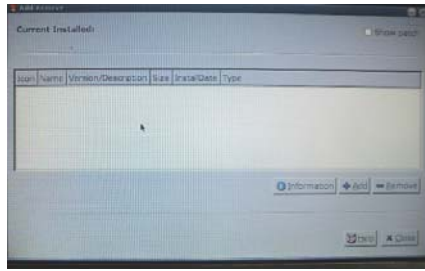


Figure 1

- 2) Use the software manager through a shortcut as follows:

Step 1: Click or double click the software manager application on the desktop, to display an interface, as shown in Figure 1.

Step 2: Click the **Add** button, to display an interface, as shown in Figure 2.

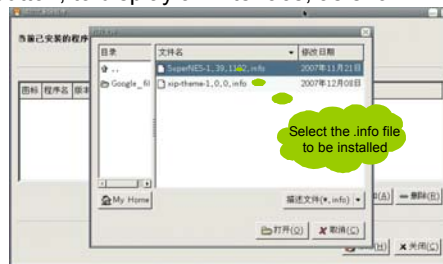


Figure 2

Step 3: Select a *.info file (note: the .xap file and .info file of the same program are located at the same directory, or else the program cannot find the installation file), and click the **Open** button, to display the dialog box that indicates the installation progress, as shown in Figure 3.

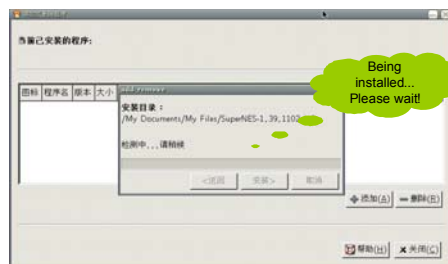


Figure 3

Step 4: The installation progress bar also appears. After the progress bar reaches 100%, click the **Complete** button to complete the installation. If any error occurs during the

installation, the program will give an error prompt when it starts next time, and you can complete installation as prompted. The interface after the installation is completed is shown in Figure 4.

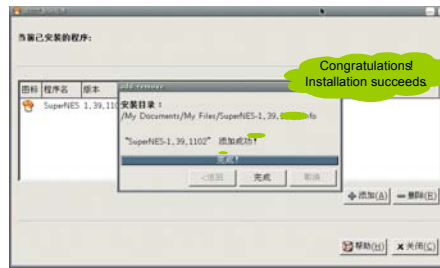


Figure 4

Step 5: After you click the **Complete** button, the program is installed at your computer, and the software manager will display the application related information, as shown in Figure 5.

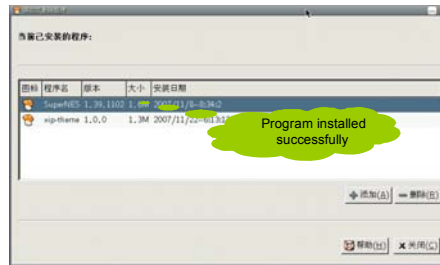


Figure 5

Step 6: If you want to delete the installed program, select it on the panel, and then click the **Delete** button at the right lower corner, to display a dialog box, as shown in Figure 6.

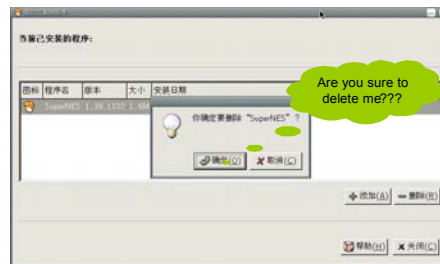


Figure 6

Step 7: Click the **OK** button to uninstall the program from the computer, or click the **Cancel** button to cancel the operation.

18. System Settings

System settings are used to set the system time, date, network, sound and other items of SW-E700. You can customize your SW-E700.

The following part introduces how to set each item.

- 1) Time setting



Click the  **Date/Time** icon to open the **Time and Date Setup** interface, as shown in Figure 1.



Figure 1

Set the items on the interface in Figure 1 according to the actual date and time. For example, it is 14:46 on March 11 2008, and the time zone is Asia->Aden.

2) Network setting

Click the  **Network Setup** icon to open the **Network Setup** interface, as shown in Figure 2 (1) and Figure 2 (2).

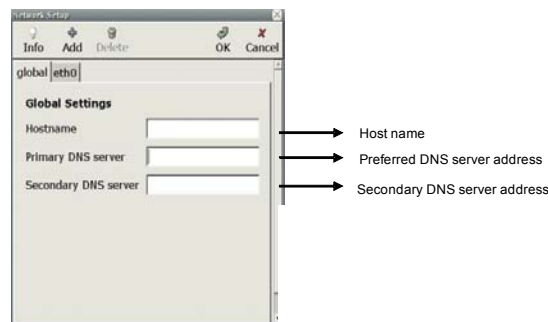


Figure 2 (1)

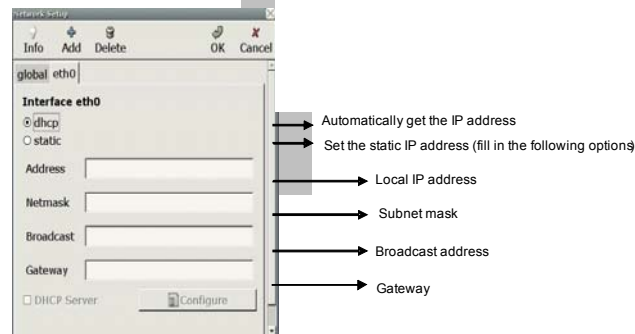



Figure 2 (2)

If you set your network according to the above steps, you can normally connect the network by automatically obtaining the IP address or setting the static IP address.

Here, you may find the **DHCP Server** option on the interface in Figure 2 (2) is not introduced. It will be introduced below:

Check the **DHCP Server** option, and click the  **Configure** button to perform the relevant setting, as shown in Figure 3 (1) and Figure 3 (2).

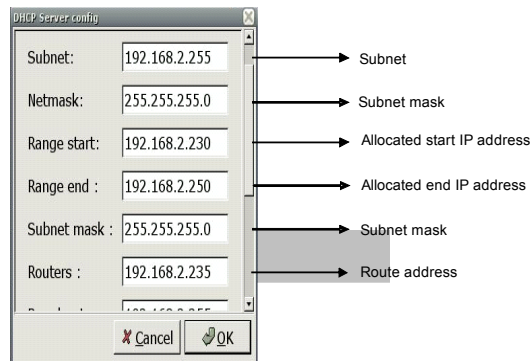


Figure 3 (1)

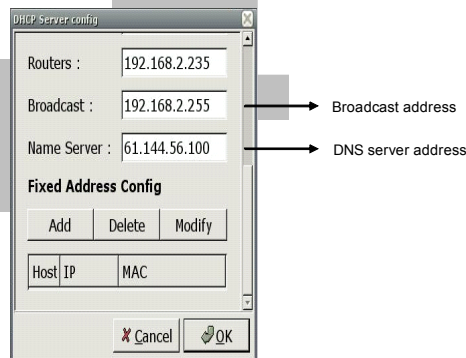



Figure 3 (2)

After settings in Figure 3 (1) and Figure 3 (2), the DHCP Server can start. To make sure if the DHCP Server has started, check if the **DHCP Server** option is selected. If it is selected, then the DHCP Server has started working, and you can allocate an IP address to the user at the same network segment.

3) My name card

Click the  **Owner Info** icon to open the **Owner Information** setting interface, as shown in Figure 4.

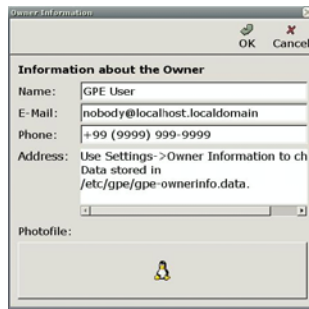



Figure 4

You can set the relevant information according to your favorite and requirement. Here, the user **anywhere** is taken as an example to set the relevant information. The interface is shown in Figure 5.



Figure 5

4) Sound setting

Click the  **Sound Setup** icon to open the **Sound Setup** interface, as shown in Figure 6.

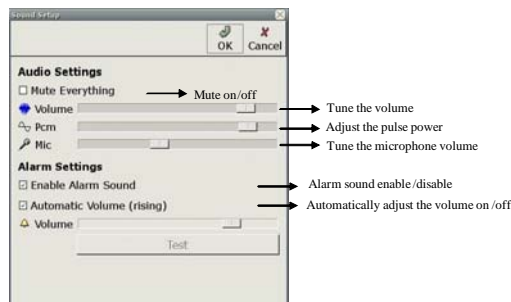


Figure 6

5) Subject palette

The subject palette enriches your desktop. With this program, you can set the

desktop skin, system language, font and toolbar as desired.

- ① Click the subject palette icon on the desktop to open the subject palette.
- ② The main interface of the program consists of three tab pages: **Subject**, **System Language** and **System Style**. They are used as follows:
- ③ On the **Subject** tab page (Figure 7), you can set different subject skins for the desktop, and add a group of icons to the background to personalize your desktop.

Check: The left list displays the available subject skins that are installed in the current system. To learn about each subject skin, click the list thumbnail to get information from the big effect image on the right.

Install: Select a subject skin thumbnail from the left list, and then click the **Apply** button. The system displays “the subject is being installed”. After it is installed, you can find the desktop (including the background and icon style) takes on an entirely new look when you close the subject palette.

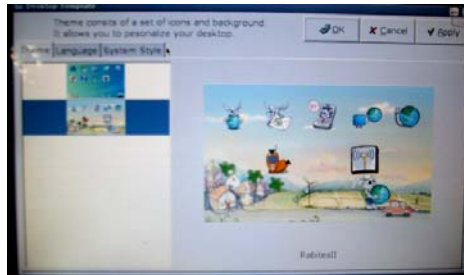


Figure 7

- ④ Customize the system language on the **System Language** tab page (Figure 8).

The system provides two languages: **English** and **Simplified Chinese**. Select the desired language, and then click the **Apply** button.

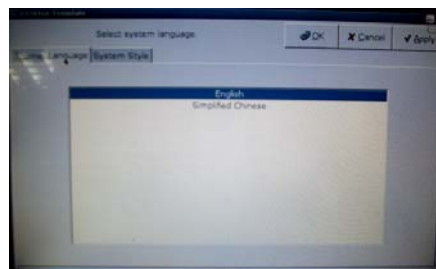


Figure 8

- ⑤ The **System Style** tab page (Figure 9) helps you to personalize the font and toolbar.

Toolbar style: You can select the icon style on the toolbar, including the size and type (if a text description is added).

Application font: You can select the favorite font and font size for you application menu.



Figure 9

After setting the desired style, click the **Apply** button to validate the setting in real time.

FCC WARNING

This device complies with Part 15 of the FCC Rules. Operation is subject to the following two conditions:

- (1) this device may not cause harmful interference, and
- (2) this device must accept any interference received, including interference that may cause undesired operation.

NOTE: This equipment has been tested and found to comply with the limits for a Class B digital device, pursuant to part 15 of the FCC Rules. These limits are designed to provide reasonable protection against harmful interference in a residential installation. This equipment generates, uses and can radiate radio frequency energy and, if not installed and used in accordance with the instructions, may cause harmful interference to radio communications. However, there is no guarantee that interference will not occur in a particular installation. If this equipment does cause harmful interference to radio or television reception, which can be determined by turning the equipment off and on, the user is encouraged to try to correct the interference by one or more of the following measures:

- Reorient or relocate the receiving antenna.
- Increase the separation between the equipment and receiver.
- Connect the equipment into an outlet on a circuit different from that to which the receiver is connected.
- Consult the dealer or an experienced radio/TV technician for help.

NOTE: The manufacturer is not responsible for and radio or TV interference caused by unauthorized modifications to this equipment. Such modifications could void the user's authority to operate the equipment.