



## User's Manual of Zigbee-Ethernet Gateway

Model No.: ZIGB-GATW-K00-0

FCC ID: WGM-ZIGB-GATW-K00



### ※Product Description:

The Zigbee Gateway receives and transmits data between two dissimilar networks. It communicates with wireless Zigbee nodes which gather data from Bartech's E-Fridge. The data is transmitted over the air to a Zigbee transceiver on the Gateway. Once the Gateway receives the data, it is forwarded on the Ethernet Network to a Server, where the data is processed. The Gateway is responsible for forming the network to which all notes communicate.

### ※Specification:

Primary input Voltage: Power over Ethernet (-48VDC)

Aux Input Voltage: 5VDC (supplied)

Max current draw: 350mA

(auxiliary AC power supply may be used 5VDC, 1A).

Frequency Band: 2.4GHz ISM Band; 15 channels (802.15.4 Channel 11 to 25)

Ember EM260 single chip Zigbee™/IEEE802.15.4 solution was used

### ※FCC RF Radiation Exposure Statement

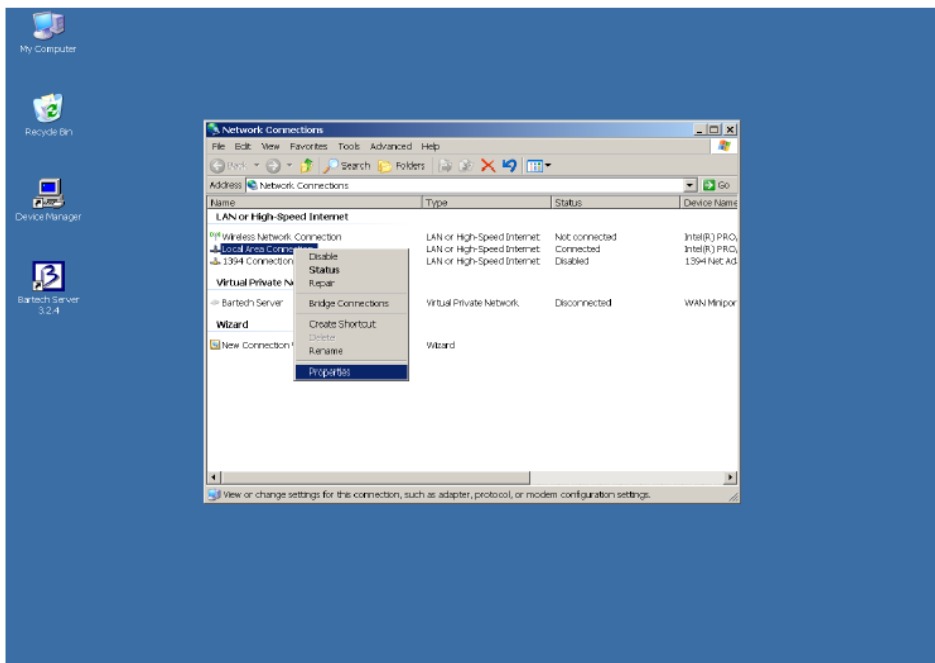
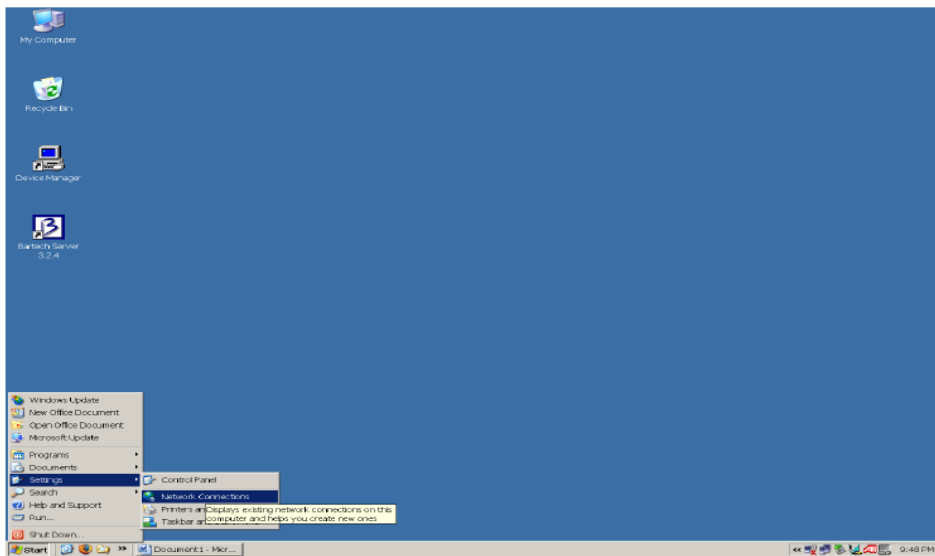
This equipment complies with FCC RF radiation exposure limits set forth for an uncontrolled environment. This device and its antenna must not be co-located or operating in conjunction with any other antenna or transmitter.

## ❖ Operations:

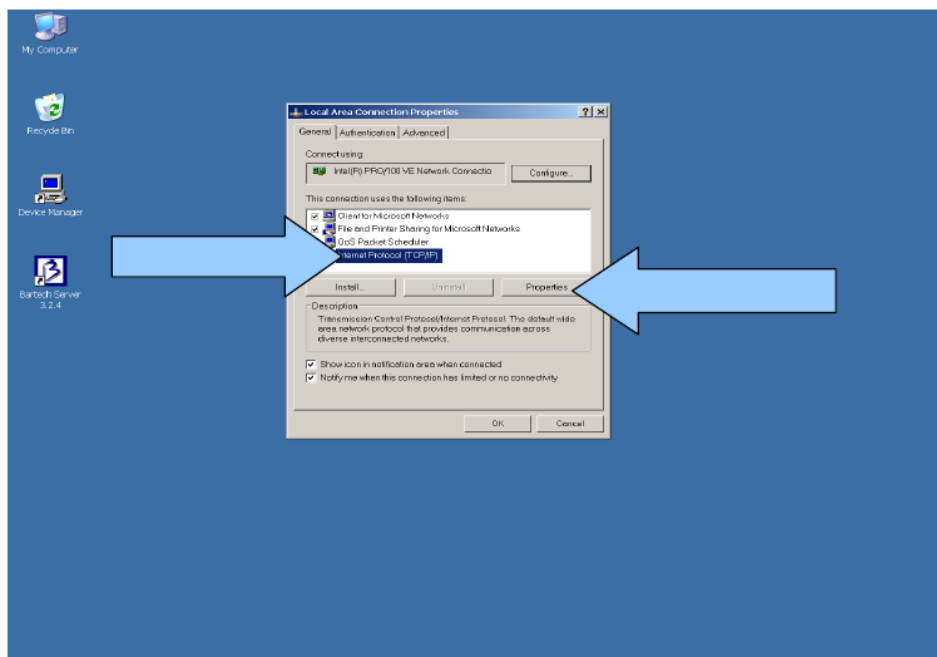
PoE power supply : Power and data via a single (CAT5) cable.

After connecting the Zigbee Bridge to PC Ethernet Port, and access the manufacture library test program, the gateway's IP address must be on the same subnet as your computer. For the default 192.168.1.100 IP address, you must temporarily change the settings on your PC.

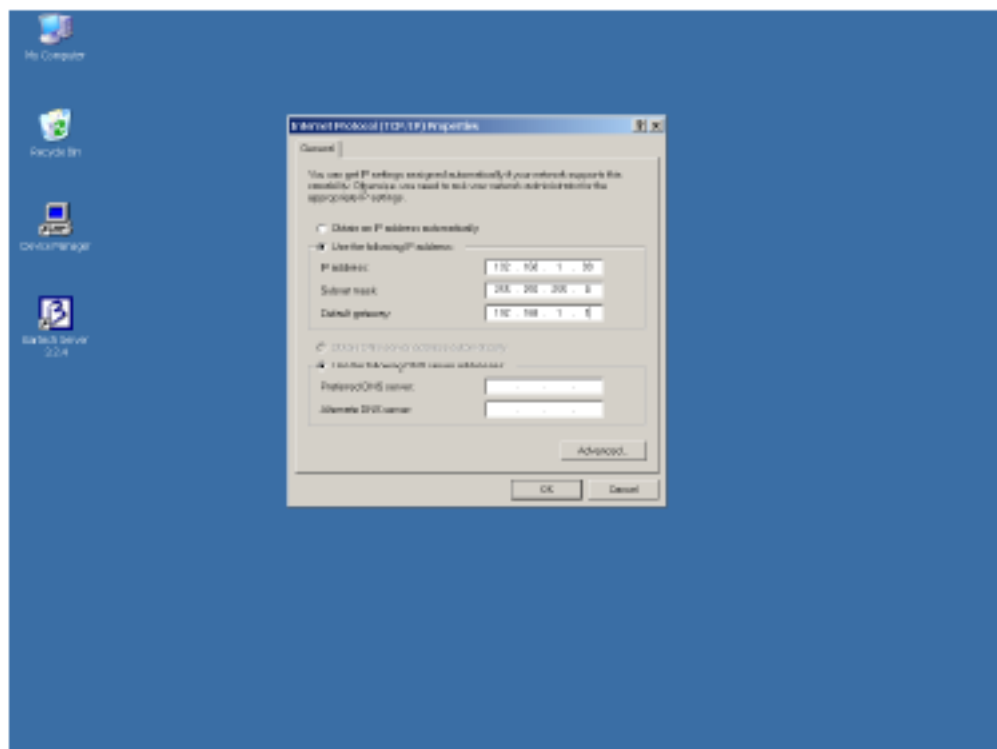
The following instructions assume you are using Microsoft Windows XP and will vary for other operating systems. Please see the figures below:



Right click on the network adapter that you are using to communicate with the boot loader and choose Properties



**Select Internet Protocol (TCP/IP) and click Properties**



**Select Use the following IP address and then enter the IP address 192.168.1.99. Click *Ok* and then *Close* on the previous dialog to close them and set the new address and start to use.**

## **※Caution!**

### **FCC Warning:**

This device complies with Part 15 of the FCC Rules. Operation is subject to the following two conditions:

- (1) this device may not cause harmful interference, and
- (2) this device must accept any interference received, including interference that may cause undesired operation.

**Caution:** Changes or modifications not expressly approved by the manufacturer could void the user's authority to operate the equipment.

To comply with FCC RF exposure requirements, the device and the antenna for this device must be installed to ensure a minimum separation distance of 20 cm or more from a person's body. Other operating configurations should be avoided.

**Note:** This equipment has been tested and found to comply with the limits for a Class B digital device, pursuant to part 15 of the FCC Rules. These limits are designed to provide reasonable protection against harmful interference in a residential installation. This equipment generates, uses and can radiate radio frequency energy and, if not installed and used in accordance with the instructions, may cause harmful interference to radio communications. However, there is no guarantee that interference will not occur in a particular installation. If this equipment does cause harmful interference to radio or television reception, which can be determined by turning the equipment off and on, the user is encouraged to try to correct the interference by one or more of the following measures:

- Reorient or relocate the receiving antenna.
- Increase the separation between the equipment and receiver.
- Connect the equipment into an outlet on a circuit different from that to which the receiver is connected.
- Consult the dealer or an experienced radio/TV technician for help.