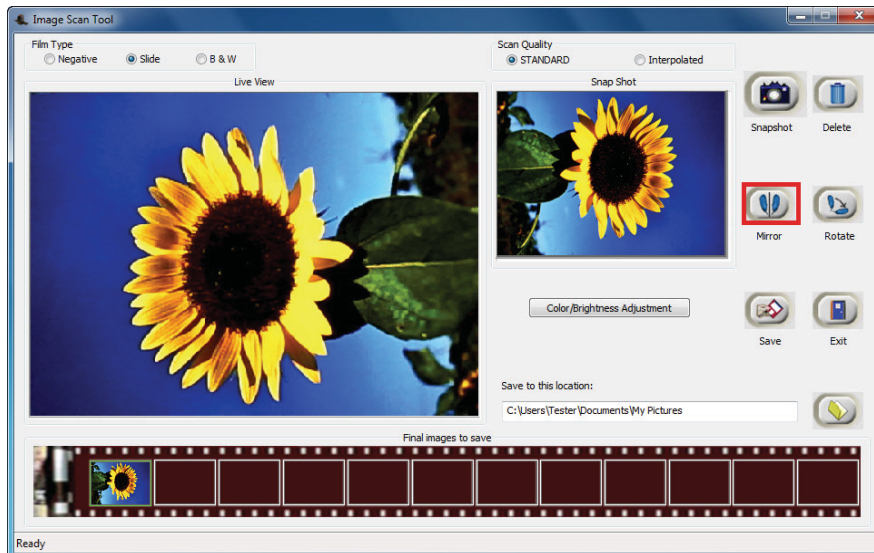
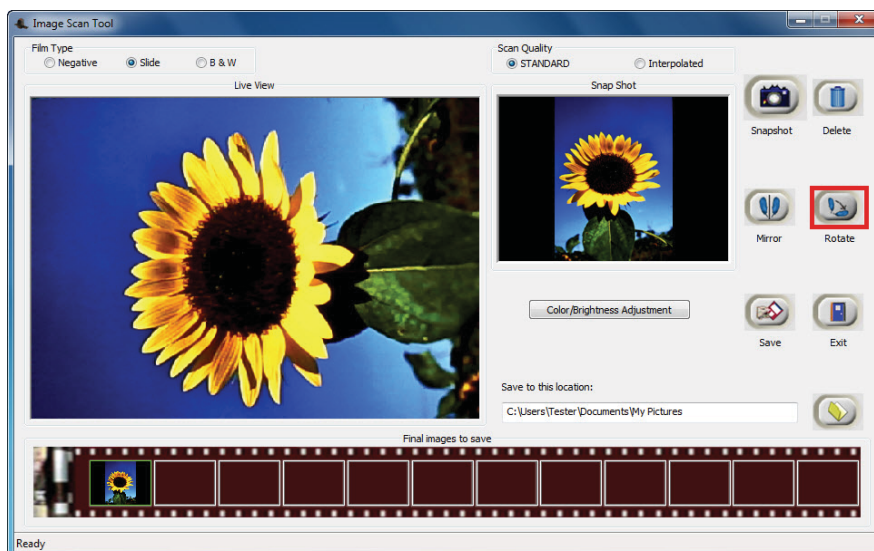


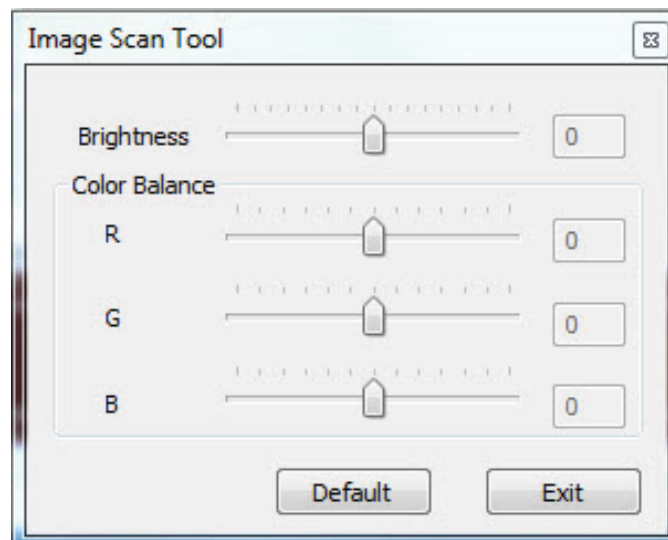
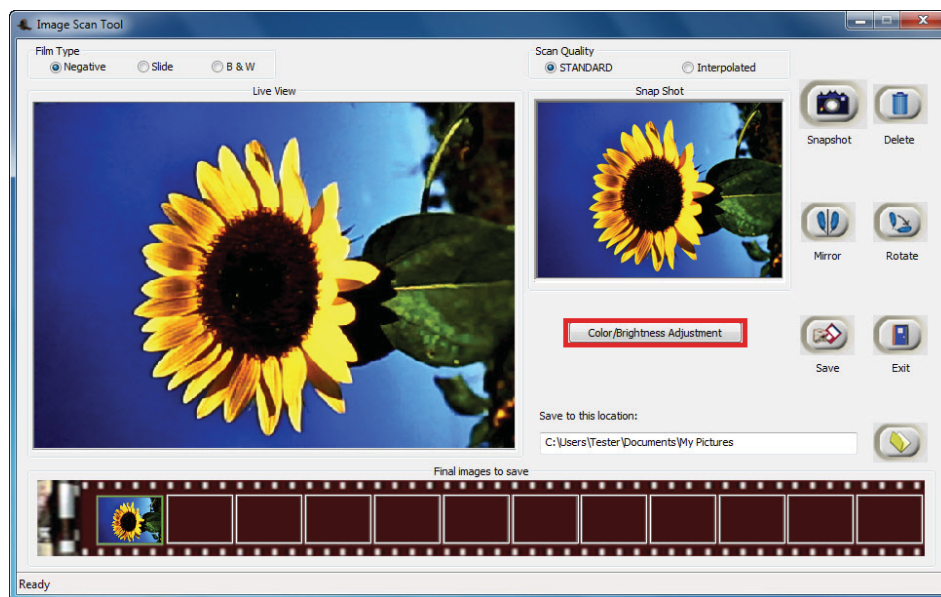
Press the “Mirror” icon to flip the Live View image to preview on the Snap Shot window.



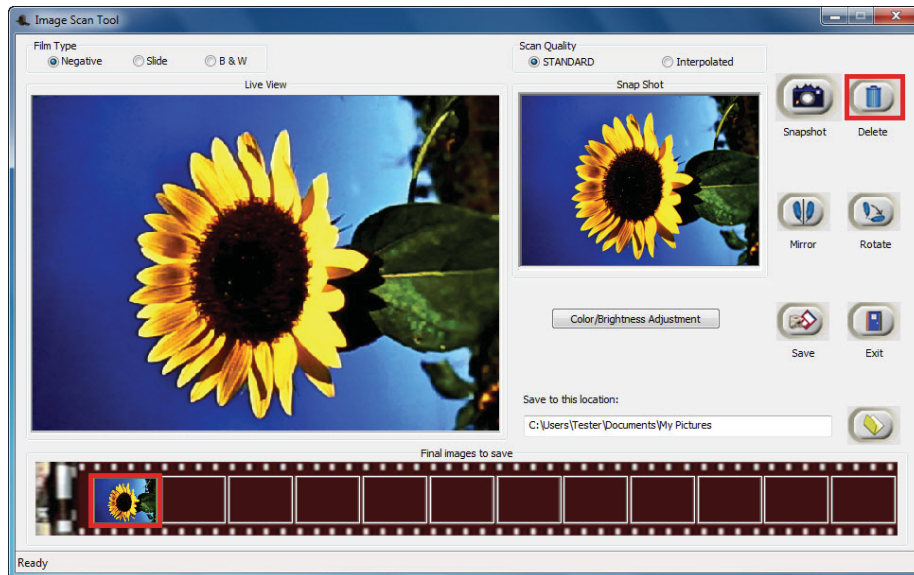
Or apply the Rotate function by pressing “Rotate” icon. The image will be rotating in 90 degrees clockwise on one single click, continue until the prefer position is set.



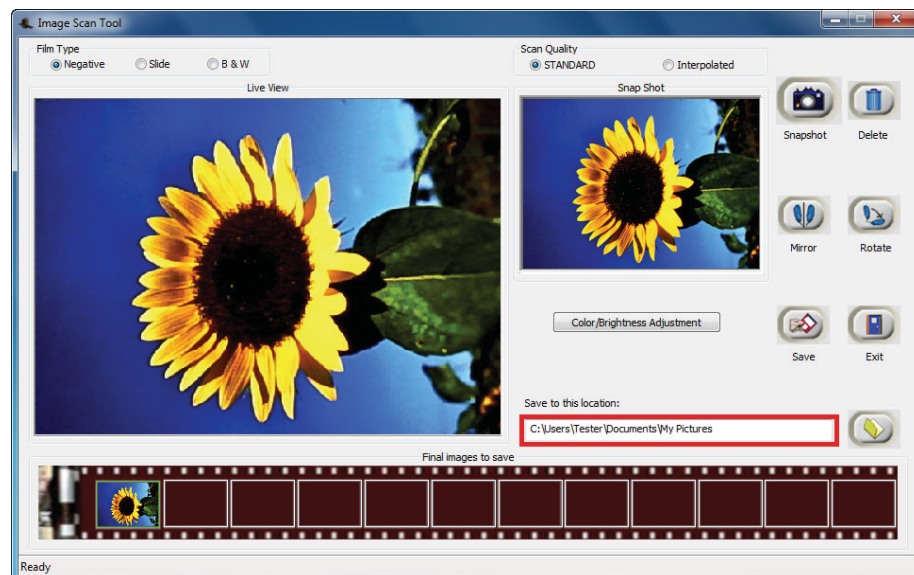
To manually adjust the image brightness and color level, click on “Color/Brightness Adjustment” icon. A pop up window containing Brightness bar and Color R, G, B bar will show up on screen and pulling the level bar to make adjustment.



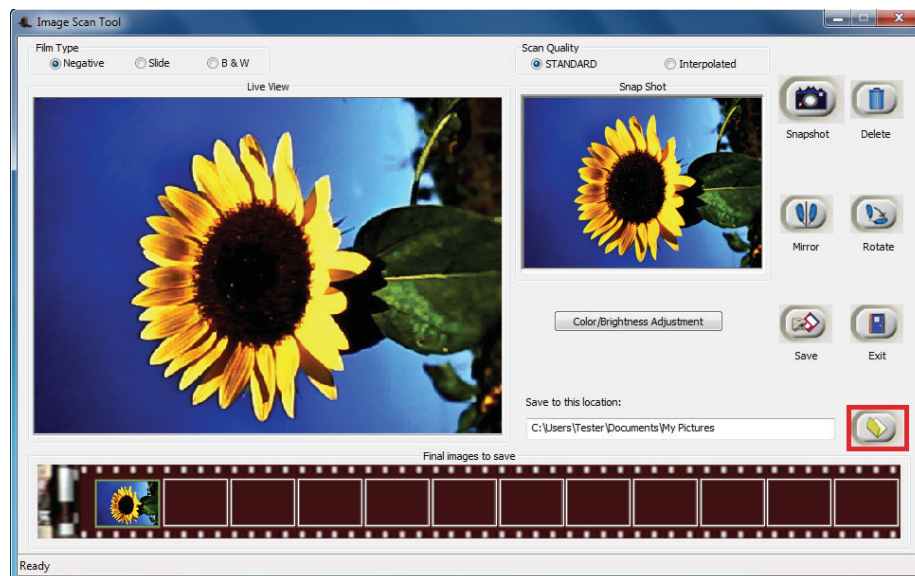
To delete a image, select the thumbnail image wish to delete and click on “Delete” icon.



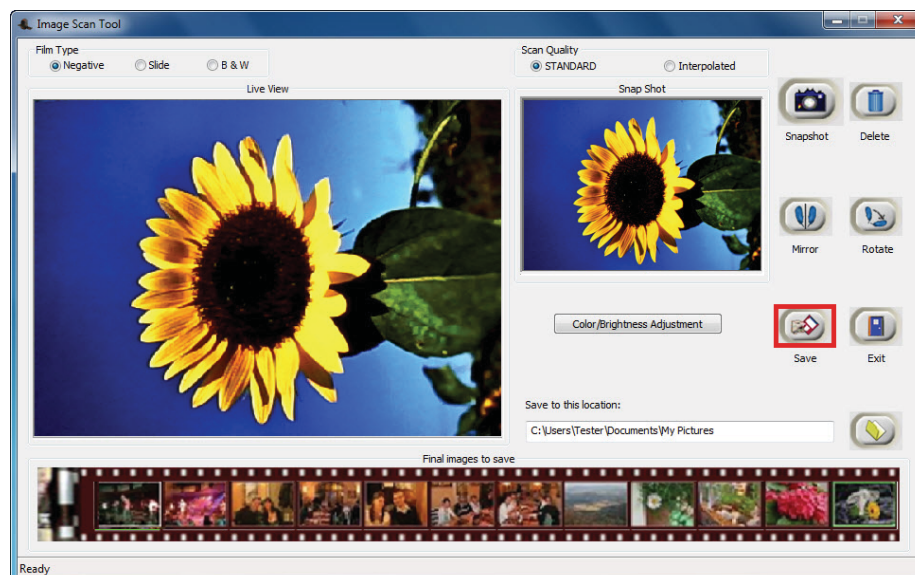
The stored images in thumbnail bar need to be saved to hard disk. The default location in hard disk is at “C:\Documents and Settings\Users\My Documents\My Pictures”.



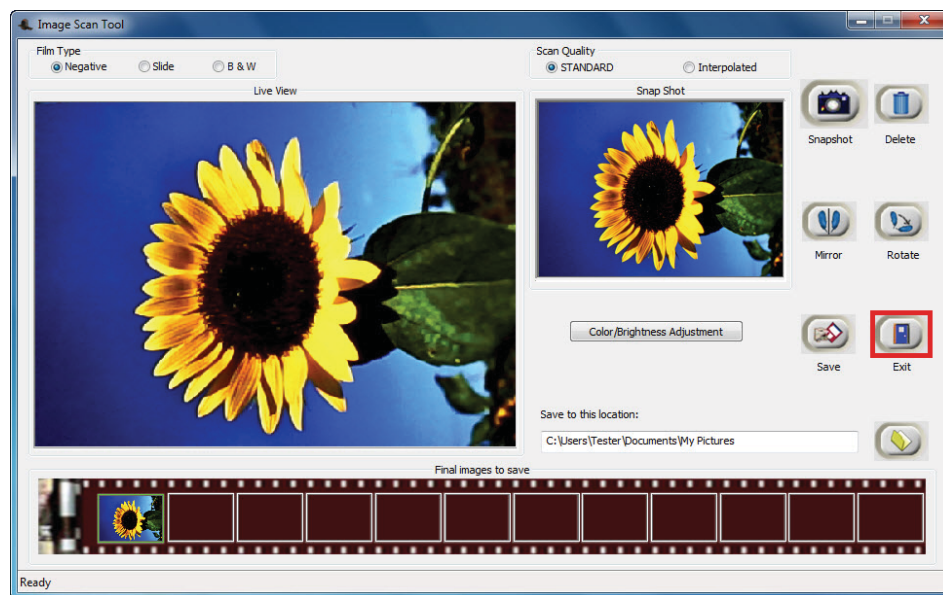
Or user can save to a prefer hard disk location by pressing the directory icon. Another pop up window will show up to select the directory for saving images.



Press “Save” icon to save images to hard disk. The thumbnail bar is cleared after save.



When completed the capture, user can press “Exit” button to quit this Image Scan Tool.
Then, review captured images or process more fancy modification with bundle software for PC.

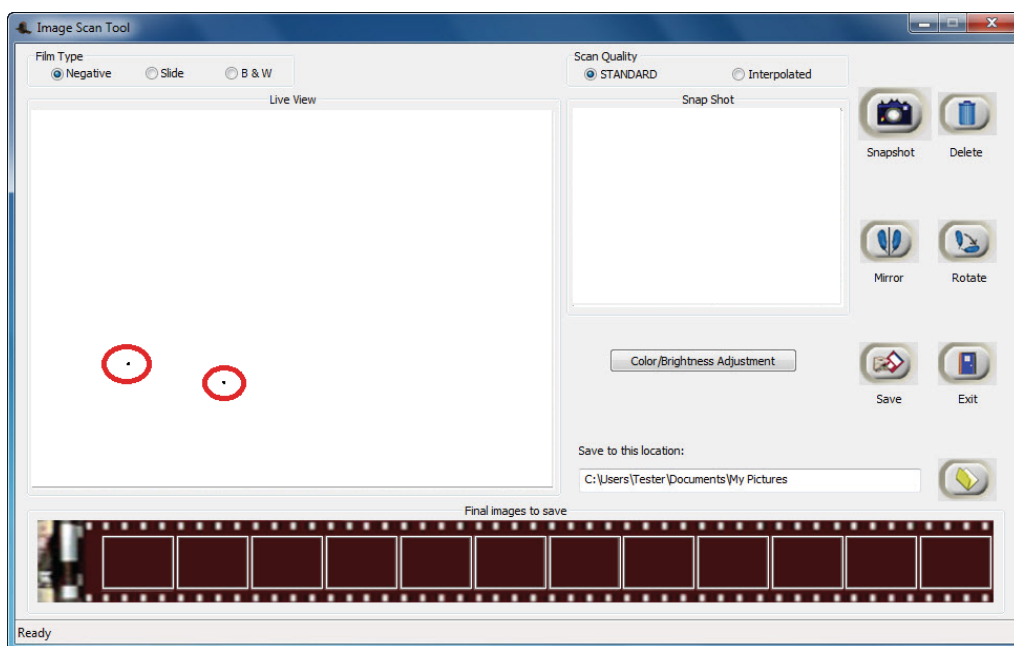


VII. Specifications

Image Sensor:	5 mega CMOS sensor
Lens:	Precision TM Glass Element Fixed Focus
Focus Range:	Fixed focus
Exposure Control:	Automatic, with manual control enhancement
Color Balance:	Automatic, with manual control enhancement
Scan Quality	1,800/3,600 dpi
Data Conversion	10 bits per color channel
Scan Method	Single pass
Light Source	Back light (3 white LEDs)
Interface:	USB 2.0
Power:	USB port
Dimensions	82x86x152mm
Weight	0.58kg
Operating Systems	Windows XP/Vista/Win 7 (32/64 bit)

Appendix. Clean FilmScan35I

When viewing without the film holder on the film slot if found any dust dot on live view window, user is able to clean it by using the bundled clean brush to wipe the dust.



NOTE

- ✧ We strongly suggest using a clean, dry, non-alcohol cotton swab to clean the glass surface periodically to produce a clear image during operation.

Keep dry. Precipitation, humidity, and liquids, contain minerals that will corrode electronic circuits.

Do not use or store in dusty, dirty areas.

Do not store in hot areas. High temperatures can shorten the life of electronic devices and warp or melt certain plastics.

Do not store in very cold areas. Moisture can form inside the case, which may damage electronic circuit boards.

Do not attempt to open the case. Non-expert handling of the device may damage the system.

Avoid dropping and strong impact.

Do not change or modification. It is not expressly approved by the party responsible for compliance could void the user's authority to operate the equipment.

This equipment has been tested and found to comply with the limits for a Class B digital device, pursuant to Part 15 of the FCC Rules. These limits are designed to provide reasonable protection against harmful interference in a residential installation. This equipment generates, uses and can radiate radio frequency energy and, if not installed and used in accordance with the instructions, may cause harmful interference to radio communications. However, there is no guarantee that interference will not occur in a particular installation. If this equipment does cause harmful interference to radio or television reception, which can be determined by turning the equipment off and on, the user is encouraged to try to correct the interference by one or more of the following measures:

- Reorient or relocate the receiving antenna.
- Increase the separation between the equipment and receiver.
- Connect the equipment into an outlet on a circuit different from that to which the receiver is connected.
- Consult the dealer or an experienced radio/TV technician for help.

FCC ID: WFZSCND522A1231

**This device complies with Part 15 of the FCC Rules.
Operation is subject to the following two conditions:
(1) this device may not cause harmful interference, and
(2) this device must accept any interference received,
including interference that may cause undesired operation.**