

FilmScan35 I



User Manual

Version 2.00 Mar 2011
FS-I-5M

Index

I. Unpack FilmScan35I	1
II. Install Film into Holder	2
III. Connect FilmScan35I	6
IV. Install Bundled Application	7
V. Use FilmScan35I	11
VI. Introduce User Interface	15
VII. Specifications	22
Appendix. Clean FilmScan35I	

I. Unpack FilmScan35 I



FilmScan35I



Negative Film Holder



Slide Film Holder



CD-ROM



Quick Installation Guide



USB cable



Clean brush

NOTE

- ✧ We strongly suggest using a clean, dry, non-alcohol cotton swab to insert into the film scanner slot and clean the glass surface periodically to produce a clear image.
- ✧ Make Sure all negative films, slide films and cover trays are free of dust and dirt before inserting into the FilmScan35I as this may affect the image quality when scanning.
- ✧ When cleaning films, please use a professional recommended purger from a photo store to avoid damaging old or precious films.

II. Install film into holder

Install the slide into holder:

1. Open the slide holder as illustrated



2. Put slide into positive slide slot



3. Close the film holder



Install the negative film into holder:

1. Open the film holder as illustrated



2. Install film into negative film slot



3. Close the film holder



NOTE

- ✧ To avoid mirror image, follow the serial numbers (from left to right) on top of film when install negative film into holder.



Figure 1

- ✧ If the image is upside down [see fig. 2] , the image can be corrected by continuously “Rotate” function in Image Scan Tool after capture [see fig. 3].

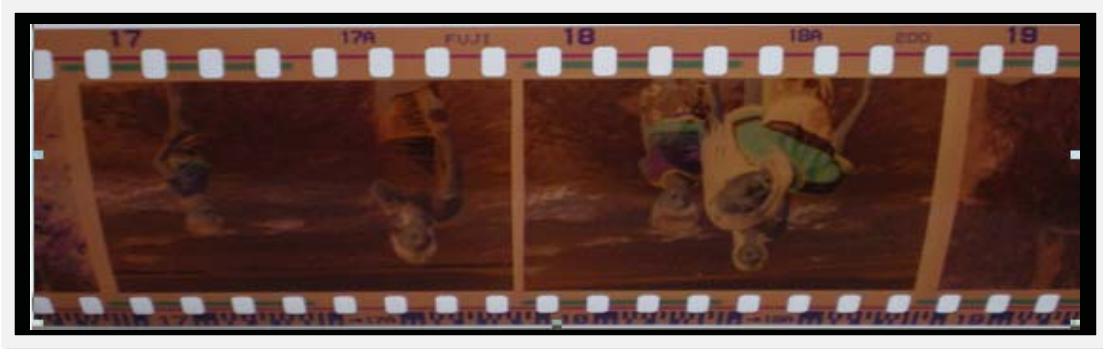


Figure 2

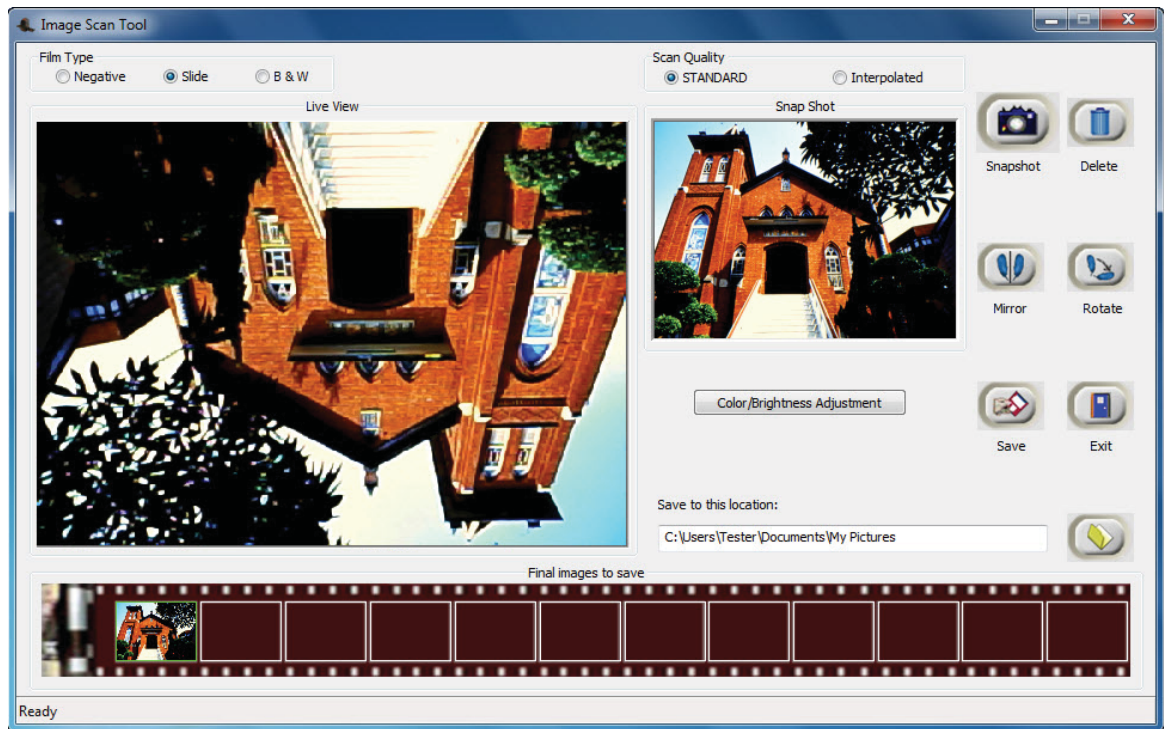
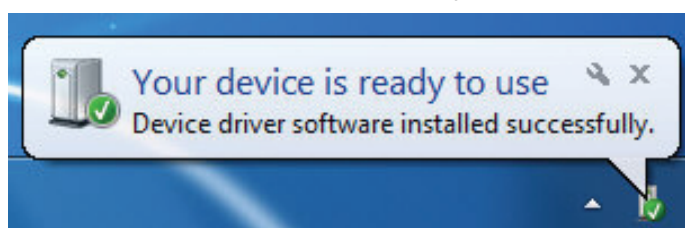


Figure 3

III. Connect FilmScan35I



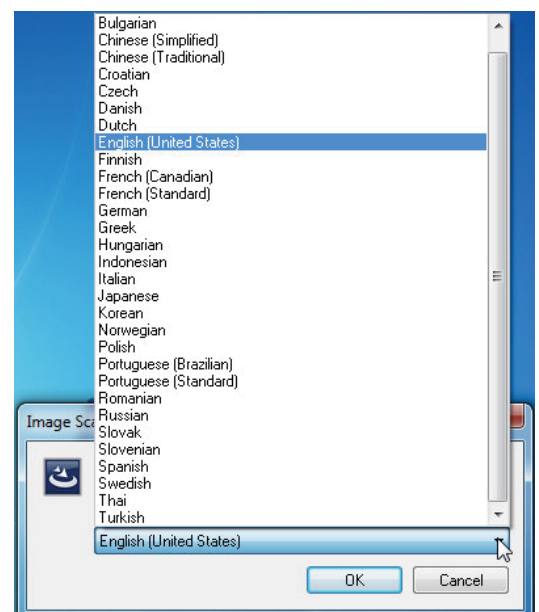
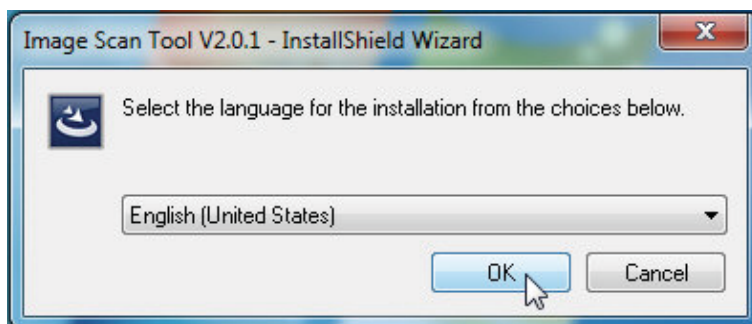
status icon on the left bottom corner shows information "Your device is ready to use". The scanner is now ready to use.

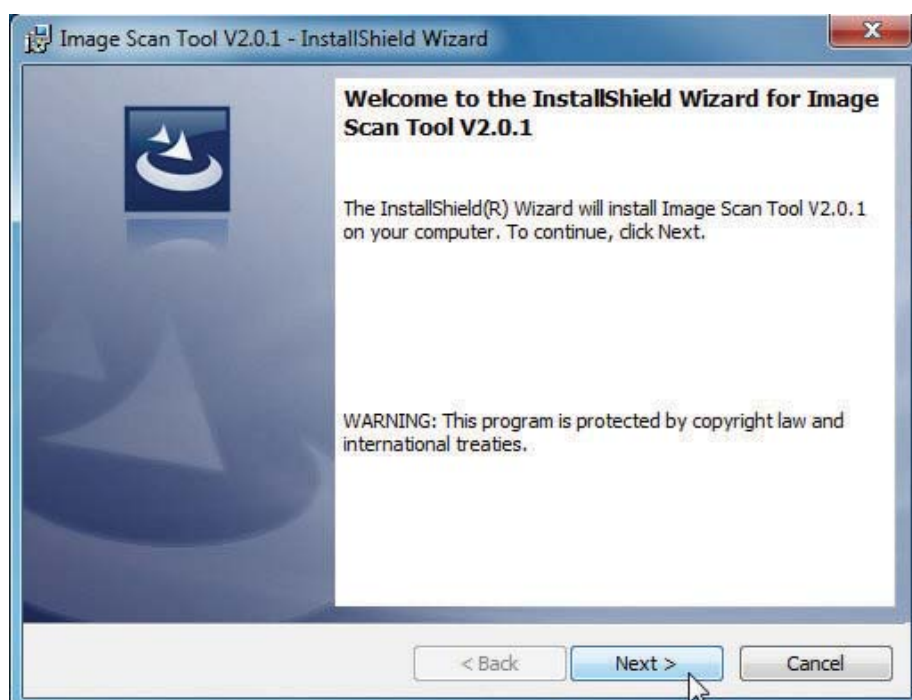
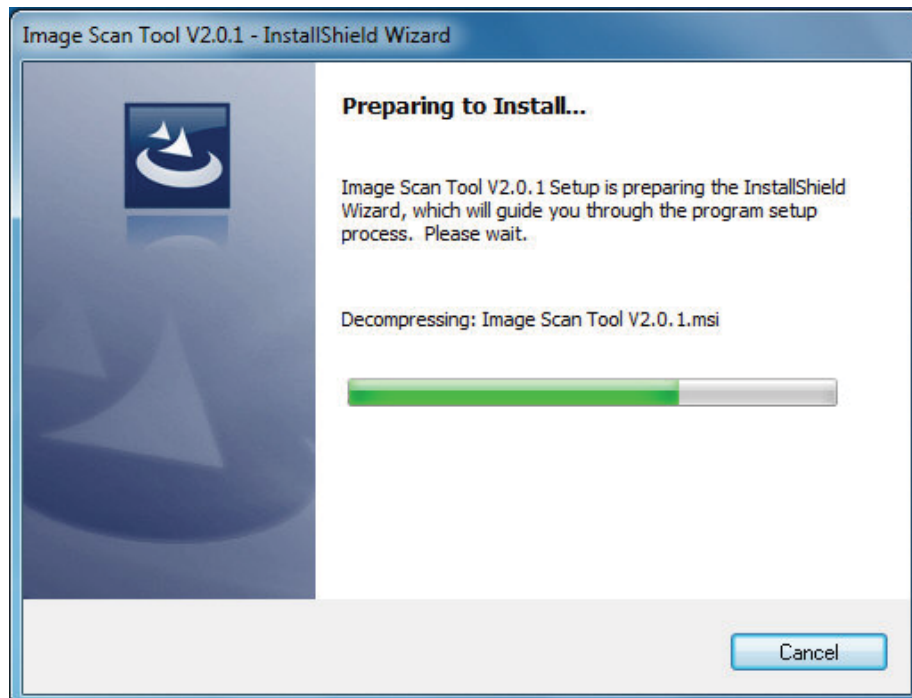


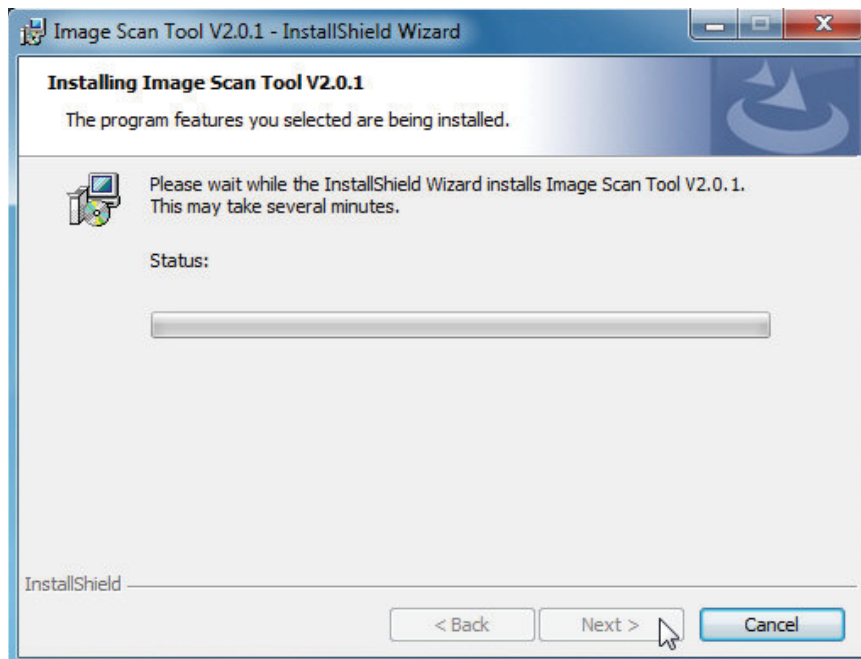
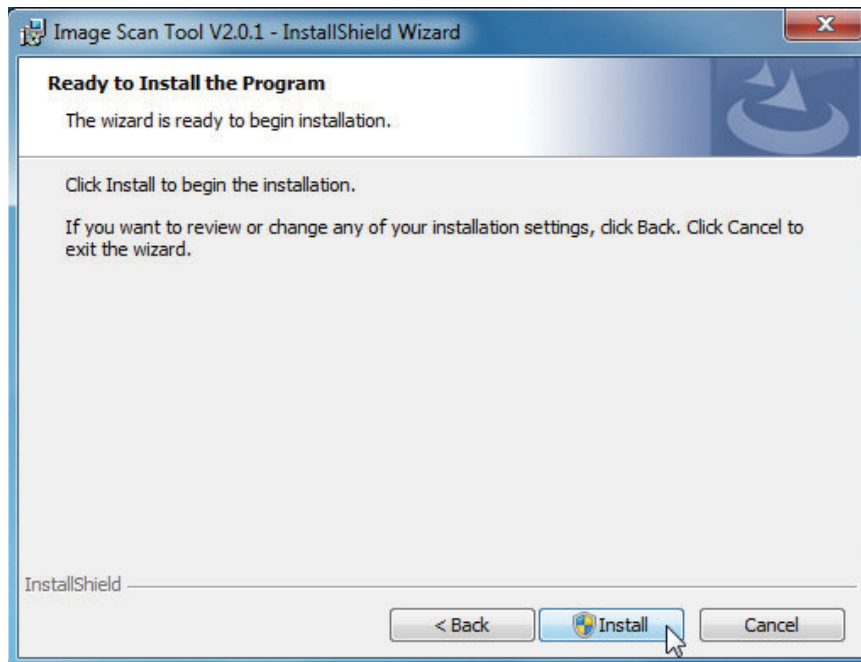
IV. Install bundled application

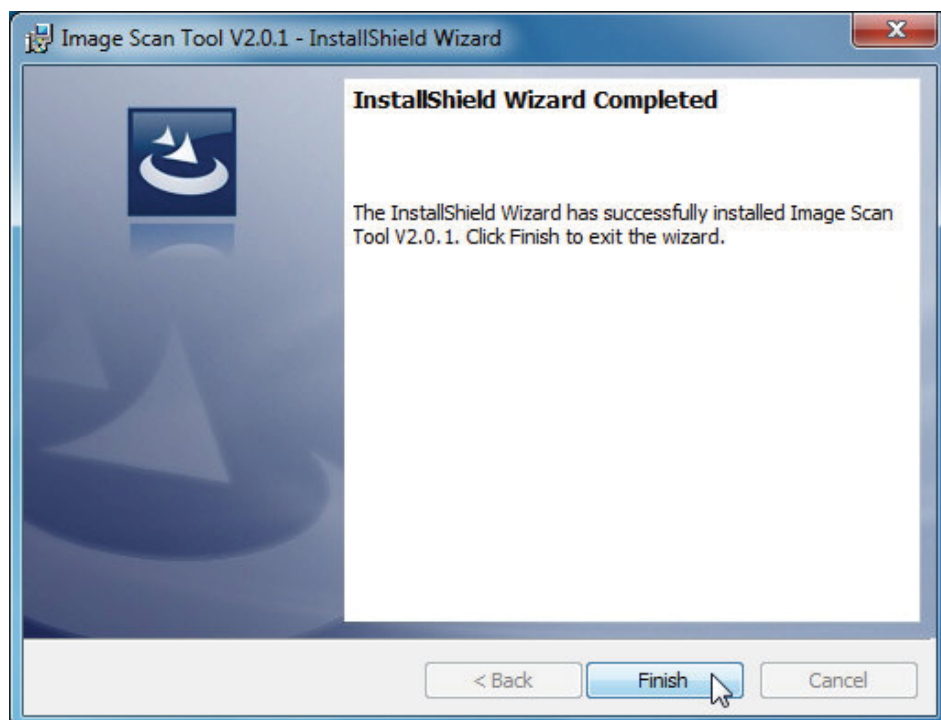
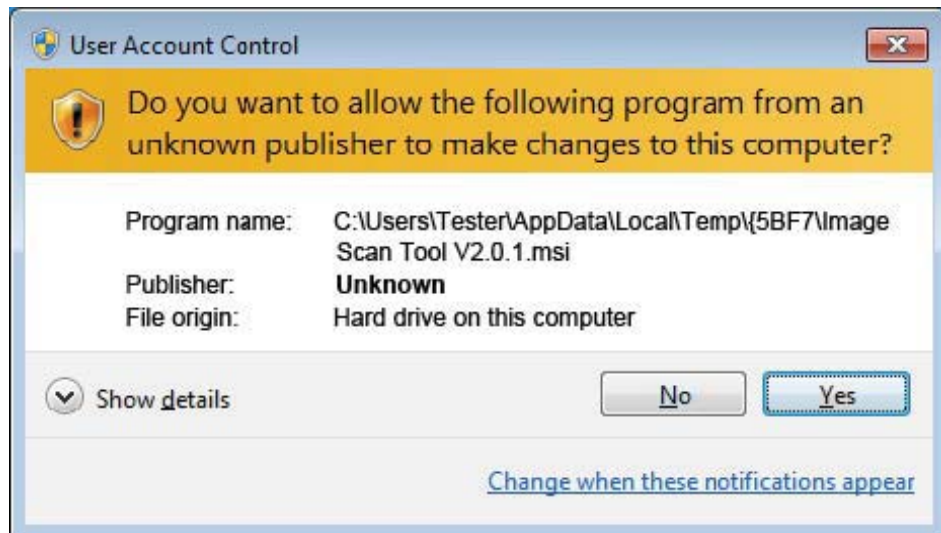
The package bundled with a friendly and easy to use application that has functions for capture, save, delete, mirror, rotate and exposure and color control.

Please follow the steps to complete the application installation.









V. Use FilmScan35I

1. Put Film into film holder



2. Insert the holder into FilmScan35I



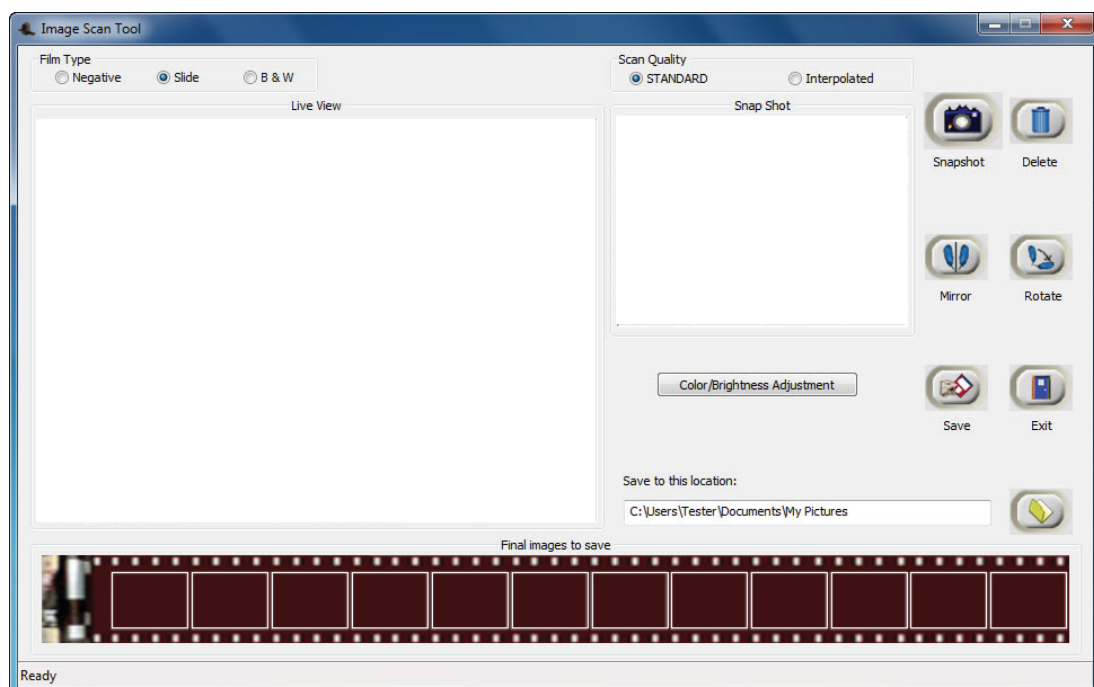
3. Make sure USB cable is connected to FilmScan35I and PC



4. On Desktop double click on “Launch Image Scan Tool” icon



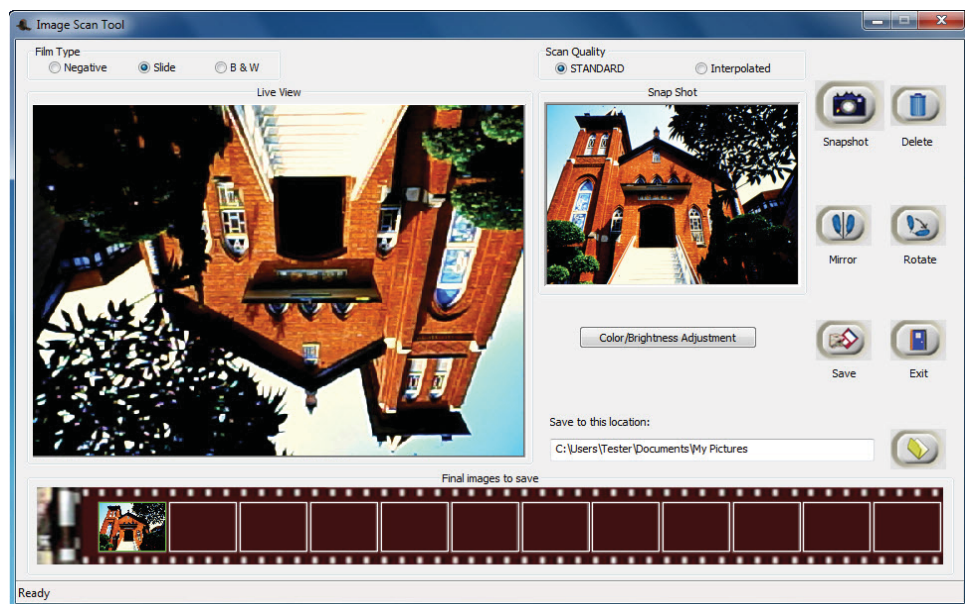
5. Click “Image Scan Tool” to enter operation interface as below



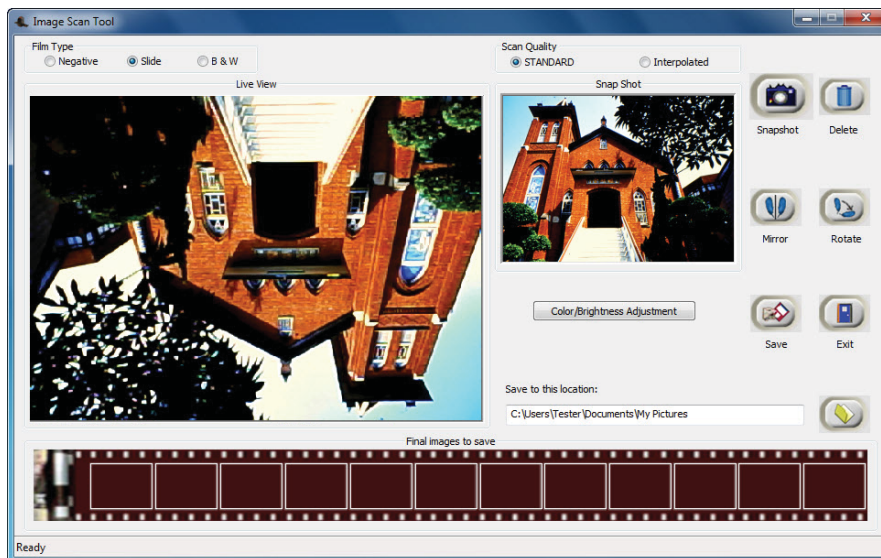
6. Press "Copy" hard button to capture the image to store in thumbnail.



7. Click on function of mirror, rotate, color and brightness control to make image to prefer state.



8. Press Save to store captured images to hard disk. The images stored in thumbnail bar is cleared after save.

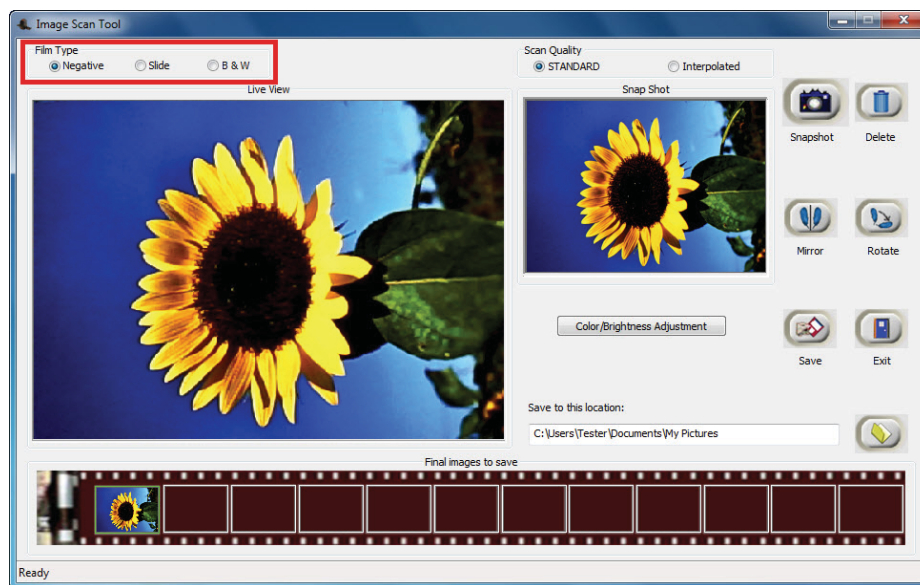


9. Retrieve saved images from the hard disk to further review and edit.



VI. Introduce user interface

First step is always to select the correct Film Type.



Negative



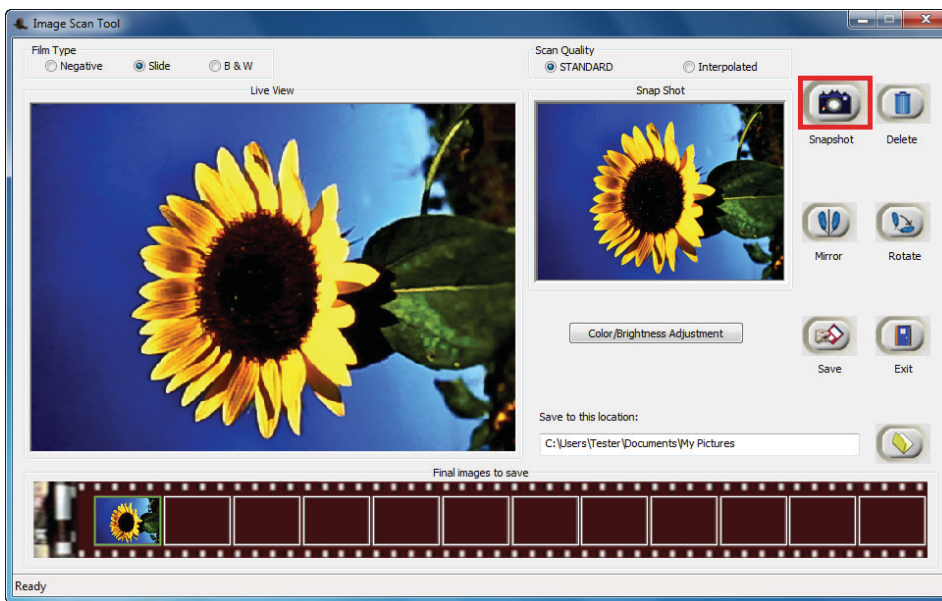
Slide



B&W



User can either click on “Snapshot” icon or press the hard key “Copy” touch button to capture images. Captured images will be first stored in the thumbnail bar. Total of 12 thumbnail images are able to store in the bar.



The image control, mirror, rotate, color and brightness in Image Scan Tool is preview instantly in Snap Shot window.