



Combo Scanner User Manual

1. Unpack the Combo Scanner



Combo Scanner



Slide Film Holder



Backlight Holder



Business card Fixture



Negative Film Holder



Photo/Business Card Holder



CD-ROM



USB cable



Clean Brush



User Manual



Quick Installation Guide

Note

- ❖ This Combo Scanner supports Windows XP, Vista and Windows7(32/64bits) via USB 2.0 only.
- ❖ We strongly suggest using a clean, dry, non-alcohol cotton swab to clean the glass surface on the back-light holder and the business card fixture periodically to produce a clear image.
- ❖ Make sure all negative films, slide films, cover trays and photos are free of dust and dirt before inserting into the Scanner as this may affect the image quality when scanning.
- ❖ When cleaning films, please use a professionally recommended purger from a photo store to avoid damaging old or precious films.

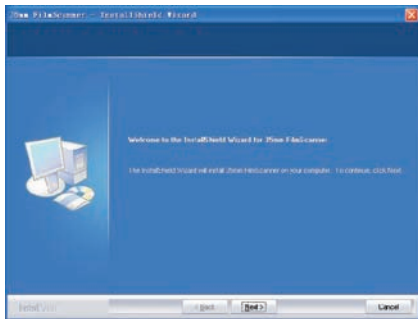
II. Driver Installation

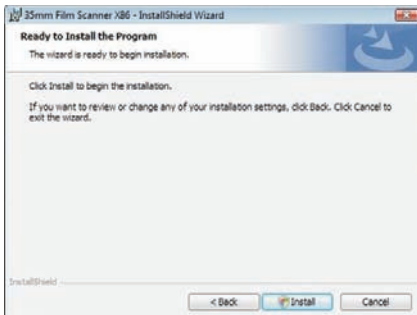
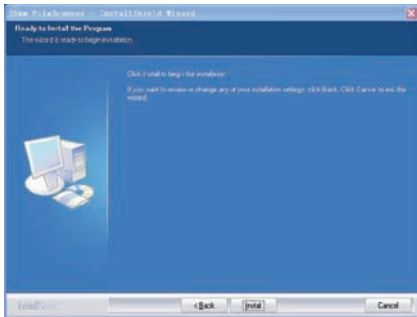


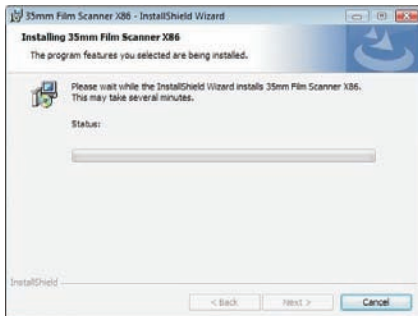
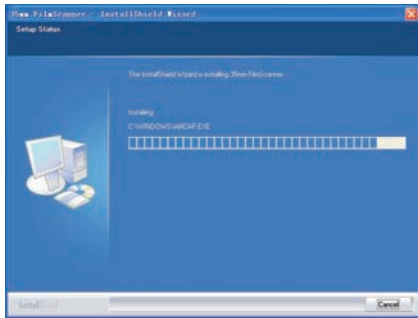
To use the Combo Scanner, please complete the following installation in advance.

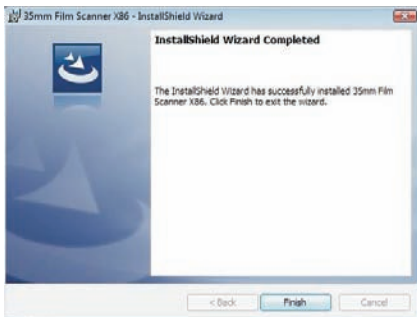
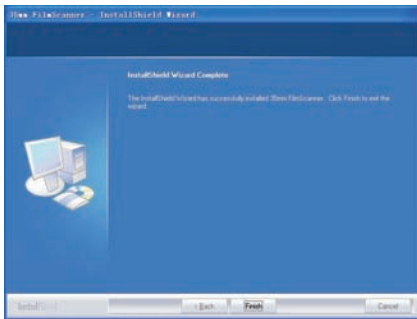
1. Turn on the computer
2. Insert the installation CD into the CD-ROM drive and the installation CD menu will appear
3. Click the "Installation" button to begin.
4. After the installation completed, you can browse the video instructions and user manual from the CD.
5. Click "Exit" to quit the driver installation menu.

6. Follow the on-screen instructions for installation. (XP, Vista/Windows7)

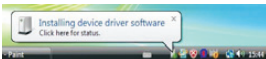
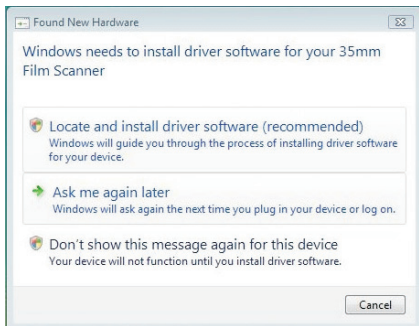




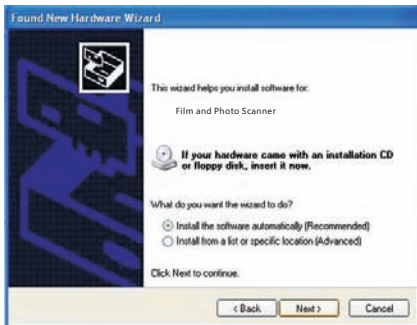




7. After completing software installation, please connect Combo Scanner to PC. The New Hardware Wizard will detect a new device.

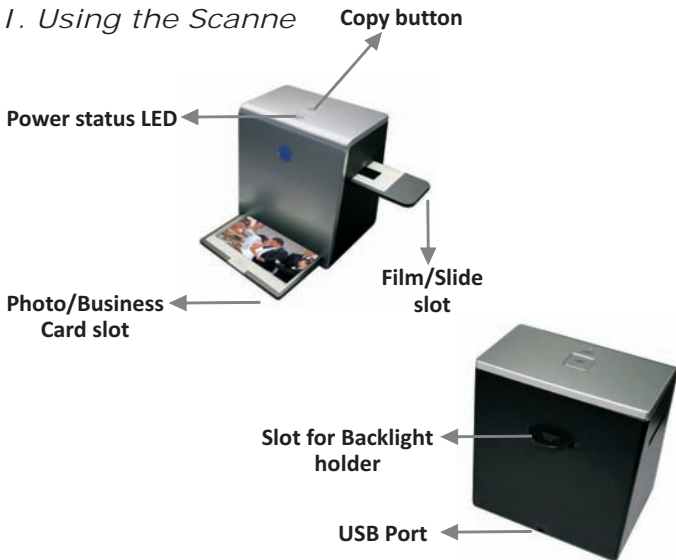


8. Select “Yes” in XP or “Locate and install driver software (recommended)” in Vista/Windows7 OS.



9. After completing the installation, the film-scanner is ready to start with “Image scan Tool” under program files. (WindowsXP/Vista/Windows7,) It is recommended (but not required) to restart your PC after installation or un-installation.

III. Using the Scanner



Installing film into the film holder

Install slide Film into the holder entitled “Slides Only”

1. Open the slide holder as illustrated



2. Place slide in recessed slot in holder



3. Close the film holder



Install Negative Film into the holder entitled “Negative Film Only”:

1. Open the film holder as illustrated



2. Install film into negative film slot



3. Close the film holder



Note

- ✧ To avoid a mirror image, follow the serial numbers (from left to right) on top of film when installing negative film into holder.



Figure 1

- ✧ If the image is upside down [see fig.2], the image can be corrected by "Rotate" function in Image scan Tool after capture [see fig.3].



Figure 2

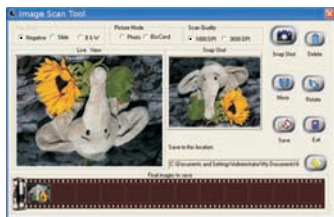


Figure 3

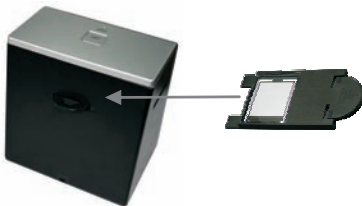
How to use Combo Scanner

Scanning Film/Slide

1. Put Film into film holder



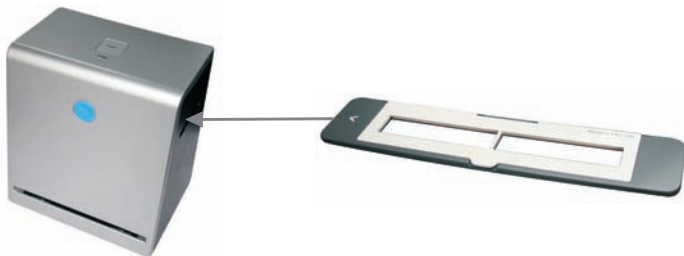
2. Insert the film/slide back light holder at the rear side of the Combo Scanner unit.



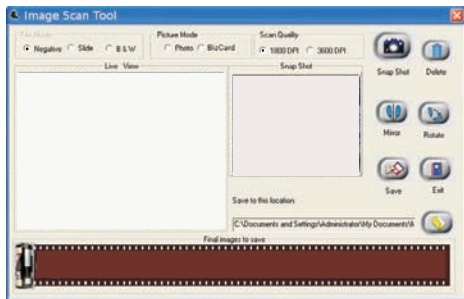
3. Plug in your USB cable to your PC with another side on the Combo Scanner unit.



4. Insert the film holder into the right side of the Combo Scanner unit



5. Click “Image Scan Tool” PC program to enter operation interface as below. The PC program will go into Film/Slide Mode automatically.



Scanning Photo

1. Remove the film / slide holder as well as the back-light holder from the Combo Scanner unit if either one is attached.



Remove film /slide holder by sliding the holder to the left hand side.



Remove back-light holder by press down the handle and pull it out.

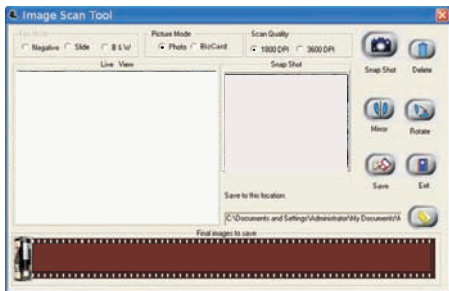
2. Open the photo holder as illustrated, Please the photo on the base of the photo holder and close the photo holder.



4. Insert the photo holder into the photo slot of the Combo Scanner unit.

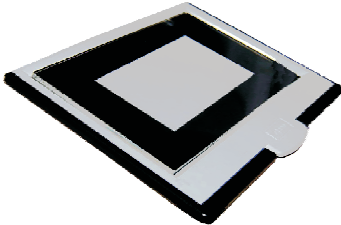


5. Click “Image Scan Tool” PC program to enter operation interface as below. The program will go into Picture Mode automatically.

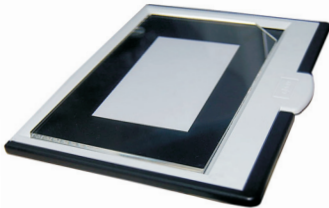


Scanning Business Card

1. Follow Step 1 from Scanning Photo to remove Film/Slide holder as well as back-light holder in the previous pages.
2. Close the photo holder and Place the business card on the base of the photo holder follows the engraved guide line on the holder.



3. Put the Business Card fixture on the top of Photo Holder.

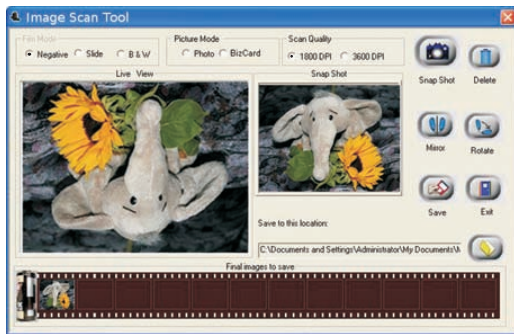


4. Insert the entire photo holder with the business card fixture into the photo slot of the Combo Scanner unit, and select "BizCard" mode from the "Image Scan Tool".

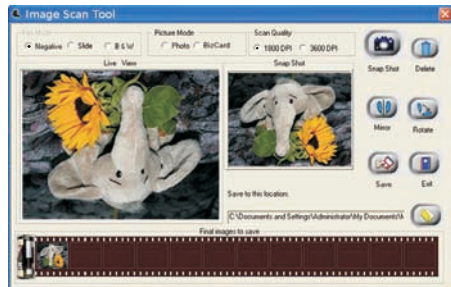
5. Press “Copy” button or press “Snap Shot” button in the PC program to capture the image



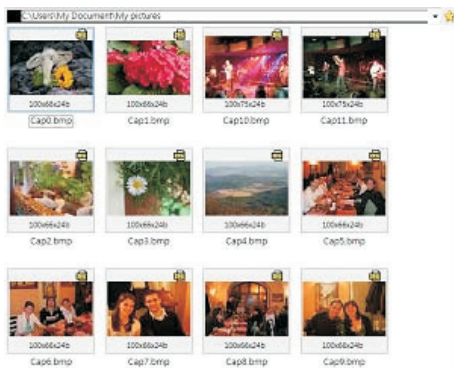
6. Process necessary modification by function buttons in right hand side



7. Save captured images to PC



8. Get final images from PC for further review and edit



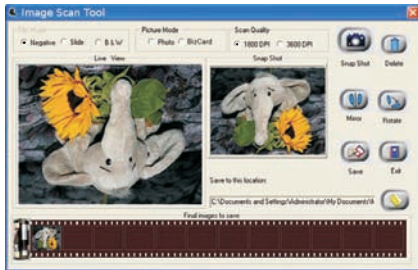
User interface introduction

Film/Slide Mode Picture Mode

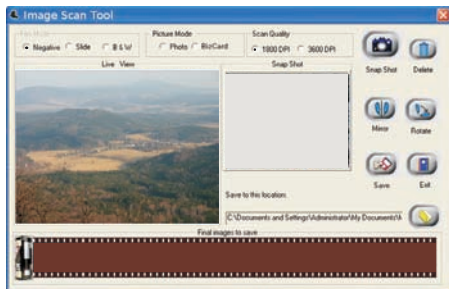


The Image scan Tool will auto select operating mode (Film/Slide Mode & Photo Mode) automatically by detecting if the backlight holder has been attached. If backlight holder is attached, it will go into Film/Slide Mode and vice versus.

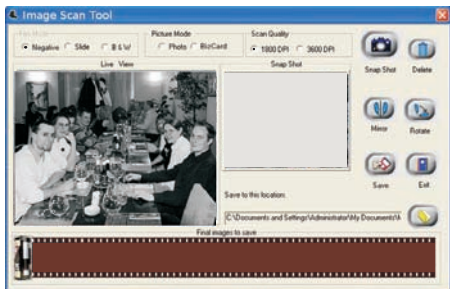
When user selects a “Negative” source, the image in “Live View” window will be exactly like the processed result.



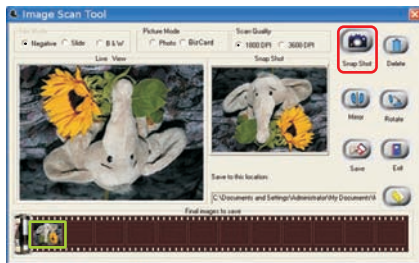
If device processes a slide, the “Live View” will show a color image and the FilmType will remain the same.



This is the live view under black and white negative option.



User can convert images from traditional film to digital either by “Snap Shot” button in Image scan Tool or the button on top of filmscanner. Then, the capture result will appear in the “Snap Shot” and “Final images to save” window.



Touch button

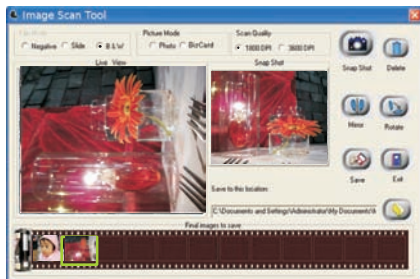
All of the effects in Image scan Tool will be ready for instant preview in “Snap Shot” and “Final images to save” window.



Apply the Mirror function by pressing the “Mirror” icon, that will flip the image and be shown in the “Snap Shot” window as well as the “Final images to Save”.



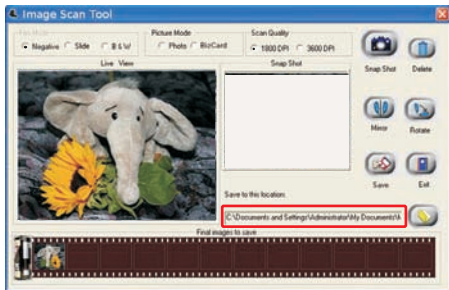
Or apply the Rotate function by pressing “Rotate” button, the image will be rotated 90 degrees each time. Images can be continuously rotated a full 360 degrees or until desired.



If the user wishes to delete a specific image from the capture pool, simply click the image under “Final image to save” again, then the selected image can be deleted by applying the “Delete” button.



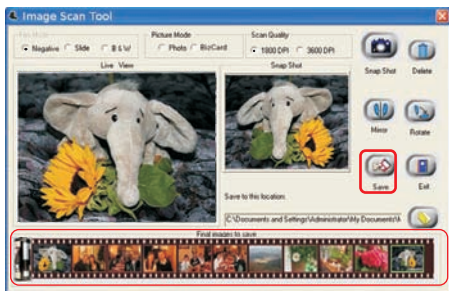
After modification, user can save images to the default location at “C:\Documents and Settings\Users\My Documents\My Pictures”.



Or define preferable location for saving captures images by pressing the directory button. Another window will pop out for user to select required location.



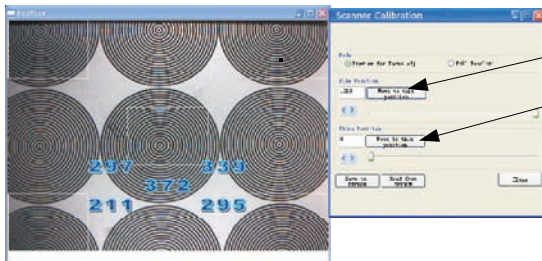
Once press “Save” key, all of captures images will be saved into defined location. The “final image” saving window shall be empty after press the “Save” button.



Combo Scanner Calibration

When you found your Combo Scanner couldn't get a sharp image, you need to run the “Scanner Calibration” program to adjust the focus of the scanner.

Launch the “Scanner Calibration” program from Window's Start Menu
→ (All) Programs → Image Scan Tool → Scanner Calibration

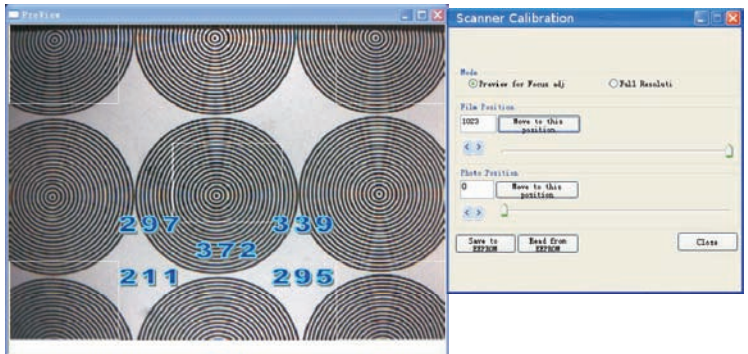


For calibrating
Film/Slide Mode

For calibrating
Photo/BizCard
Mode

You can see there are two options of calibration. They are Film Mode and Photo Mode. You have to insert the calibration film / sheet in advance before calibration.

You can drag the slide bar or type in the value for either Film or Photo position in order to obtain a clear image. Click “Save to EEPROM” to save the setting.If you lost the setting, please use “1023” as Film position default and “0” as Photo position default.



If you want to retrieve the last used value, you can click “Read from EEPROM” restore to the previous value.

You can also select the Full Resolution Preview by the top radio buttons to make sure the calibrated image is crystal clear.

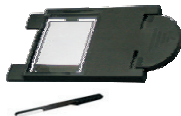
IV. Specification

Image Sensor:	5 mega CMOS sensor
Lens:	F no.=2.0, 4 Glass elements,
Focus Range:	2x Predefined Focuses
Exposure Control:	Automatic
Color Balance	Automatic
Scan Quality	1,800 dpi /3600 dpi (SW interpolation)
Data Conversion	10 bits per color channel
Scan Method	Single pass
Light Source	Film/Slide Scanning: Back light (3 White LEDs) Photo/Business Card Scanning: Light Bar (8 White LEDs)
Interface:	USB 2.0
Power:	USB port
Dimensions	190X145X205mm
Weight	0.9kg
Operating Systems	Windows XP/Vista/Windows 7 32/64bit

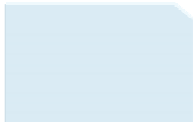
V. Cleaning the Combo Scanner

Cleaning the backlight holder

Detach the backlight holder from the Combo Scanner unit. Using the provided clean brush or a clean, dry, nonalcohol cotton swab to clean the glass surface periodically to produce a clear image during operation.

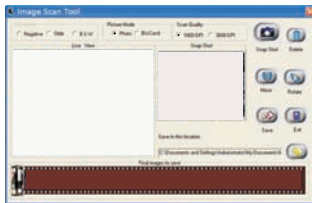


Cleaning the business card fixture



Using the provided clean brush or a clean, dry, non-alcohol cotton swab to clean the surface of the business card holder periodically to produce a clear image during operation.

You can double check the result of cleaning by removing the film holder from device and insert the cleaned back-light holder back into the unit. When you haven't notice any dust in the live view window that means you can stop cleaning.



Caution

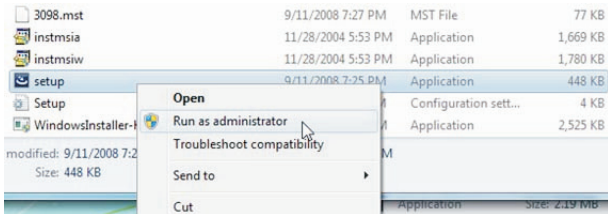
The back-light holder should be handled with extra care to avoid any scratching the glass surface in order to maintain the quality of scanned image.

Combo Scanner Trouble shooting

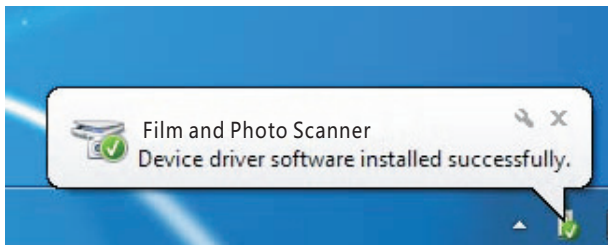
Question 1. How to instal Combo Scanner driver?

Solution :

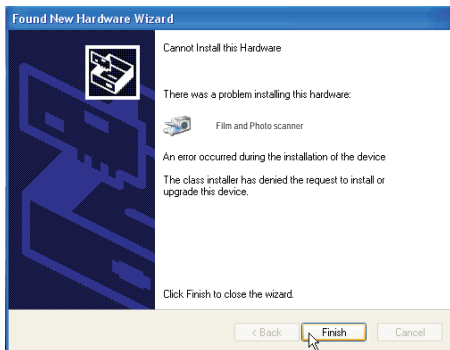
01. Put Film Scan Driver CD - ROM into your CD player.
02. Open the X (CD - ROM) : \Driver\ folder.
03. Click mouse right button on setup. exe, and click "Run as administrator" to install driver.

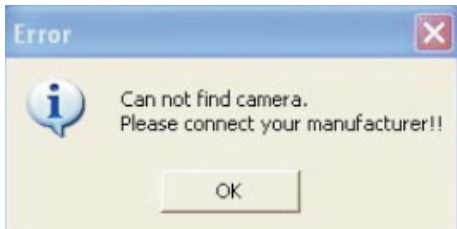


06. The Install Shield Wizard will show the message of "Install Shield Wizard Completed once the driver installed ready.
07. Connect Combo Scanner to your PC, the PC will complete the device driver installation and confirm driver installed successfully.



Question 2. Came up the error message “Cannot Install This Hardware” or “Can not find camera. Please connect your manufacturer” or “Acquire Source Failed...Restart DSM”





Solution:

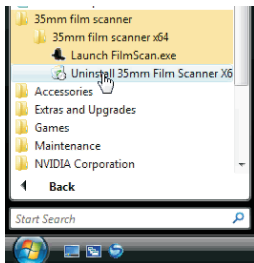
01.Check your USB cable to make sure it is well connected to your PC and your device.

02.Check your PC to verify if your Windows OS is 32 bit or 64 bit. Make sure you did not install the wrong version of the driver.

03. Uninstall the existing driver from your system.

a. Using the uninstall program of Combo Scanner application

Run start→All programs (Vista/Win7) or Program files (XP)→35mm film scanner→35mm film scanner →Uninstall 35mm Film Scanner



b. or Using the tool in device manager

(1) Open Device Manager.

Windows XP

Open Start → Setting → Control Panel → System → Hardware → Device Manager

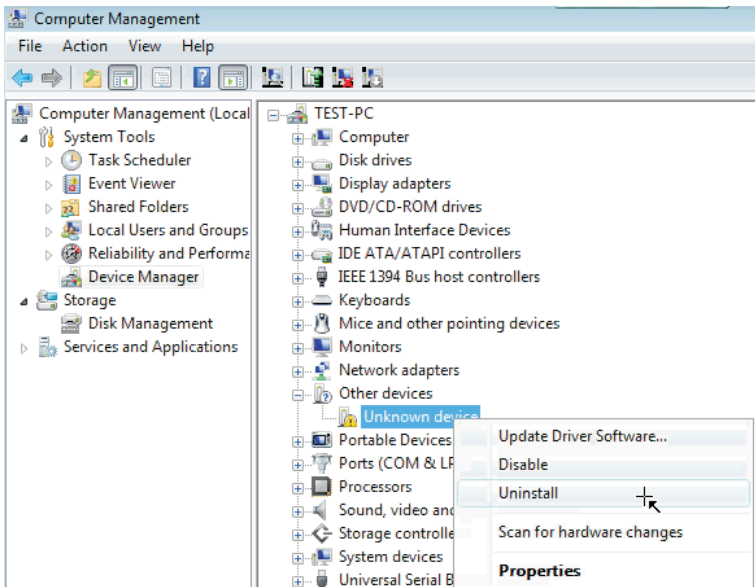
Windows Vista

Open Start → Control Panel → System → Device Manager

Windows 7

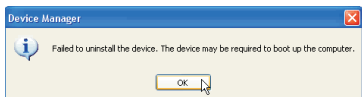
Open Start → Control Panel → System and Security → System → Device Manager

(2) Click the right button of mouse from “Unknown device” and uninstall the driver.



04. Re-install proper driver version again.

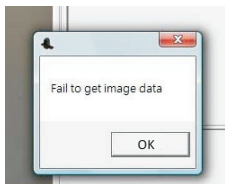
Question 3. If you can't uninstall the driver or came up the error message "Can't find the device, you may plug-in the device, and try again." or "Failed to uninstall the device. The device may be required to boot up the computer."



Solution:

Please refer to Question 2 solution and reboot your computer, if it still can't work, please contact us.

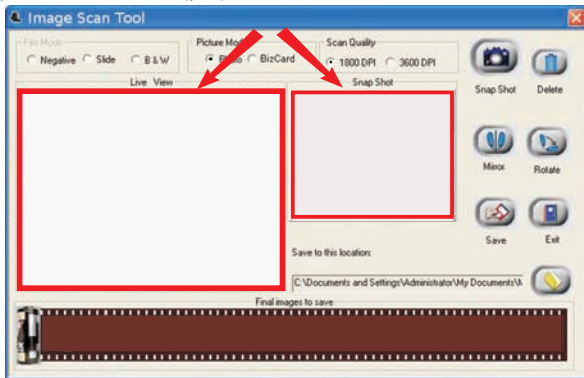
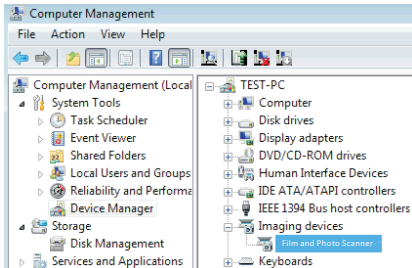
Question 4. Run the combo Scanner application and come up the error message "Fail to get image data"



Solution:

Close the application then re-start the Combo Scanner application again.

Question 5. You can't see the pre-view image from Scanner application when you have re-installed driver and device status is completed.

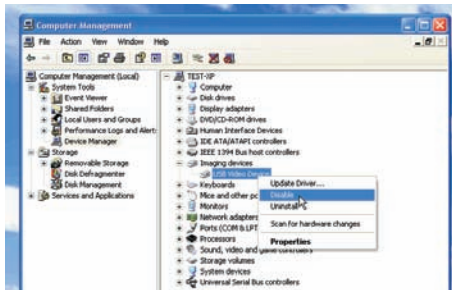


Reason: Devices confliction. (Such as USB cameras or devices.)

Solution:

01. Disable the other imaging devices by using bundled program in standard package first or disable it by the option under Imaging device when press right button of mouse.

02. Re-start Scanner application again.



Question 6. Come up the error message “General failure in transfer bad info header info. Bad value error”.



Reason: Plug device into USB1.1 port.

Solution:

Scanner only supports USB 2.0. Please verify if your PC is compatible with USB2.0.

01 Open Device Manager.

Windows XP

Open Start → Setting → Control Panel → System → Hardware → Device Manager

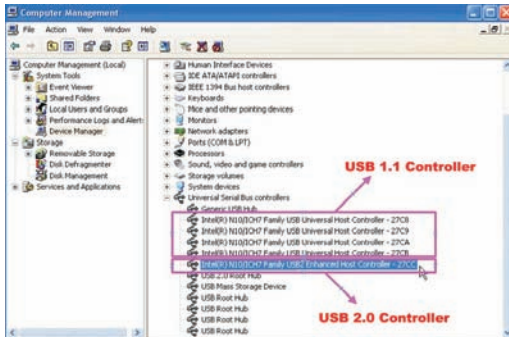
Windows Vista

Open Start → Control Panel → System → Device Manager

Windows 7

Open Start → Control Panel → System and Security → System → Device Manager

02 Your computer must with a USB 2.0 Controller in Universal Serial Bus controllers. The figure below shows the difference between USB1.1 and 2.0. There must be a “USB2” for USB 2.0 controller.



Note: If there's any abnormal condition cause user special behaviour, Combo Scanner can be reset by pull/insert USB cable again.



Instructions shall caution users that modifications not approved by the party responsible for compliance could void user's authority to operate the equipment.

The following or equivalent as appropriate:

“NOTE: This equipment has been tested and found to comply with the limits for a Class B digital device, pursuant to Part 15 of the FCC Rules. These limits are designed to provide reasonable protection against harmful interference in a residential installation. This equipment generates, uses and can radiate radio frequency energy and, if not installed and used in accordance with the instructions, may cause harmful interference to radio communications. However, there is no guarantee that interference will not occur in a particular installation.

If this equipment does cause harmful interference to radio or television reception, which can be determined by turning the equipment off and on, the user is encouraged to try to correct the interference by one or more of the following measures:

- Reorient or relocate the receiving antenna.
- Increase the separation between the equipment and receiver.
- Connect the equipment into an outlet on a circuit different from that to which the receiver is connected.
- Consult the dealer or an experienced radio/TV technician for help.”

Statement that the product complies with Part 15 (i.e. “This device complies with Part 15 of the FCC Rules. Operation is subject to the following two conditions: (1) This device may not cause harmful interference, and (2) this device must accept any interference received, including interference that may cause undesired operation.”)

CALIFORNIA PROP 65 WARNING

WARNING : This product contains chemicals known to the State of California to cause birth defects or other reproductive harm. For more information on these regulations and a list of chemicals, log on the following website address:
<http://www.oehha.ca.gov/prop65.html>

