

FilmScan35 I



User Manual

I. Unpack FilmScan35 I



FilmScan35 I



Negative Film Holder



Slide Film Holder



CD-ROM



Quick Installation Guide



USB cable



Clean brush

NOTE

- ✧ This film scanner supports Windows XP ,Vista/Windows 7 (32/64bits) via USB 2.0 only.
- ✧ We strongly suggest using a clean, dry, non-alcohol cotton swab to insert into the film scanner slot and clean the glass surface periodically to produce a clear image.
- ✧ Make Sure all negative films, slide films and cover trays are free of dust and dirt before inserting into the filmscan35 I as this may affect the image quality when scanning.
- ✧ When cleaning films, please use a professional recommended purger from a photo store to avoid damaging old or precious films.

II. Install film into the film holder

Install the slide into holder:

1. Open the slide holder as illustrated



2. Put slide into positive slide slot



3. Close the film holder



Install the negative film into holder:

1. Open the film holder as illustrated



2. Install film into negative film slot



3. Close the film holder



NOTE

- ✧ To avoid mirror image, follow the serial numbers (from left to right) on top of film when install negative film into holder.



Figure 1

- ✧ If the image is upside down [see fig. 2] , the image can be corrected by continuously “Rotate” function in Image Scan Tool after capture[see fig. 3].

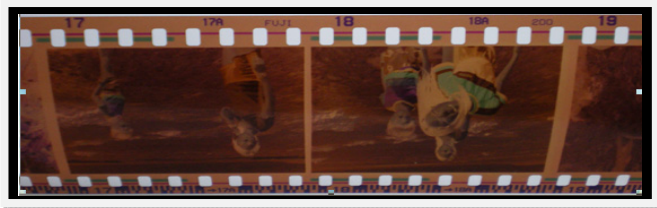


Figure 2

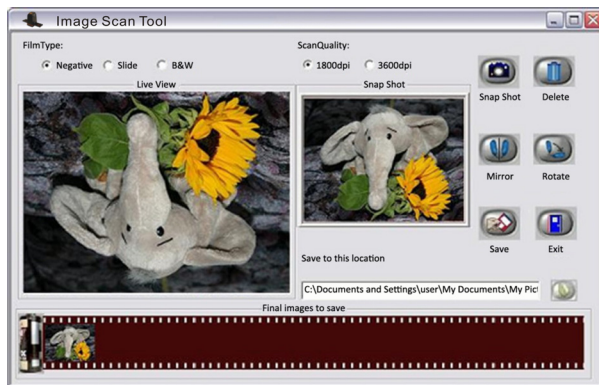


Figure 3

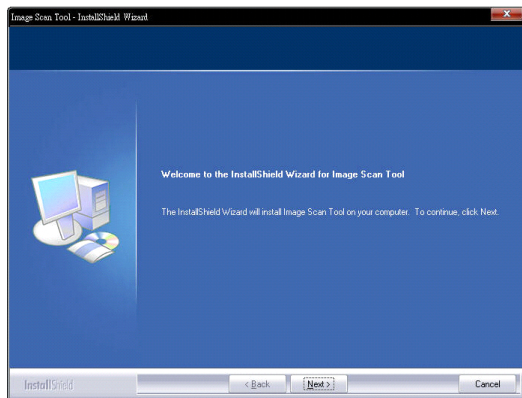
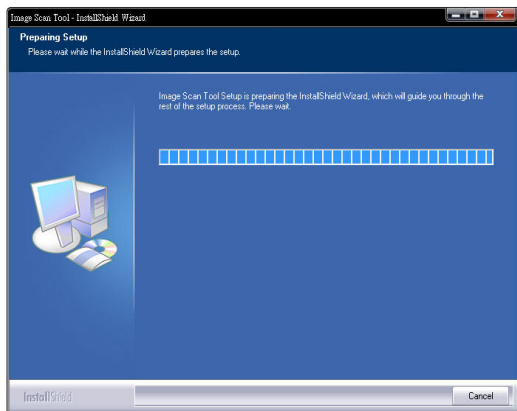
III. Installation

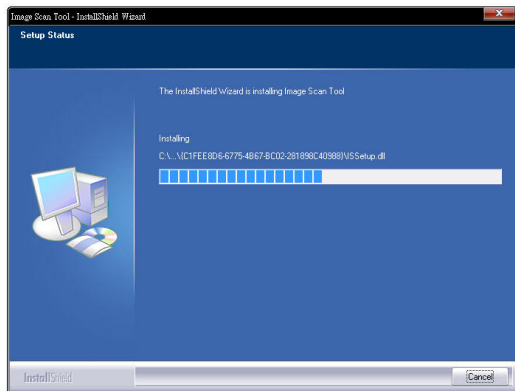
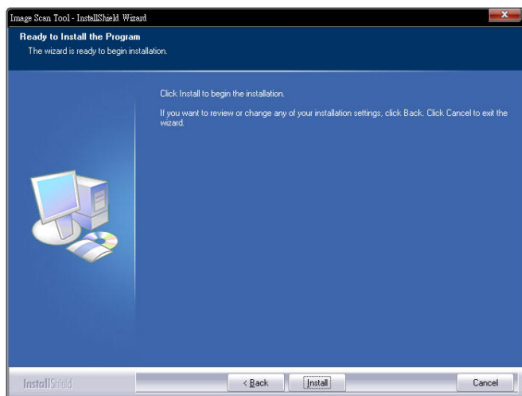
To use FilmScan35 I, please complete the following installation in advance.

1. Turn on the computer.
2. Insert the installation CD into the CD-ROM drive and the installation CD menu will appear.
3. Choose Installation.



4. Follow the on-screen instructions. (XP,Vista/Windows 7)





InstallShield Wizard Complete

The InstallShield Wizard has successfully installed Image Scan Tool. Click Finish to exit the wizard.



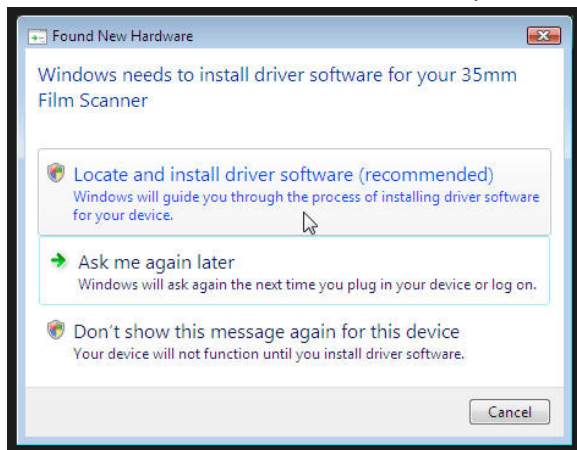
InstallShield

< Back

Finish

Cancel

5. After completing software installation, please connect FilmScan35 I to PC. The New Hardware Wizard will detect a new device if your OS is Vista .



6. Select "Locate and install driver software(recommended)" in Vista OS.

7. After completing the installation, the film scanner is ready to start with "Image Scan Tool" under program files. (XP, Vista/Windows 7) restart is not required, but it is recommended to restart your PC after installation/un-installation.

IV. Use FilmScan35 I



Start to use FilmScan35 I

1. Put Film into film slot



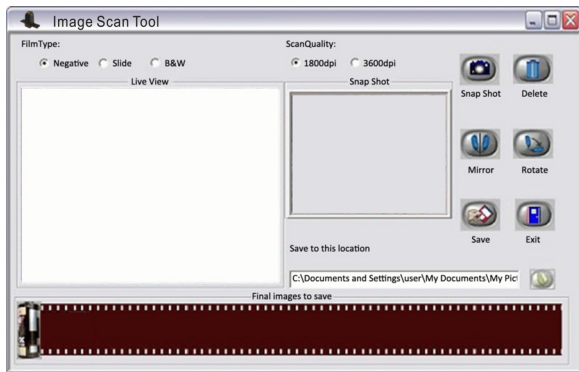
2. Insert the slot into FilmScan35 I



3. Connect FilmScan35 I to PC:



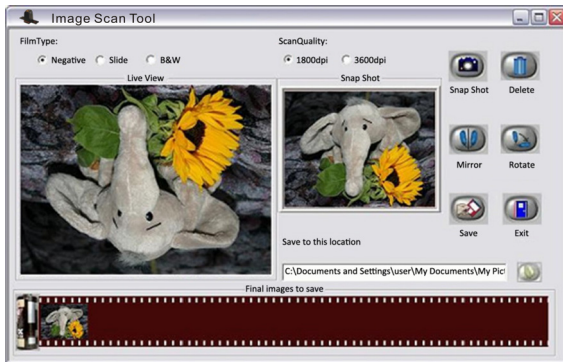
4. Click “Image Scan Tool” to enter operation interface as below



5. Press "Copy" button to capture the image



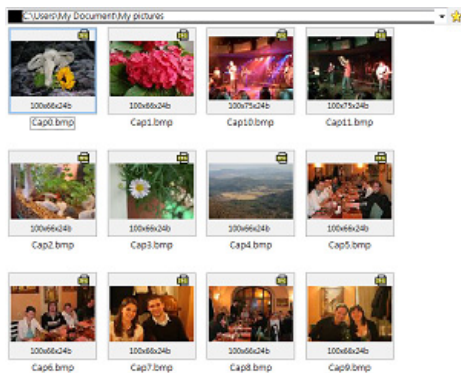
6. Process necessary modification by function buttons in right hand side



7. Save captured images to PC

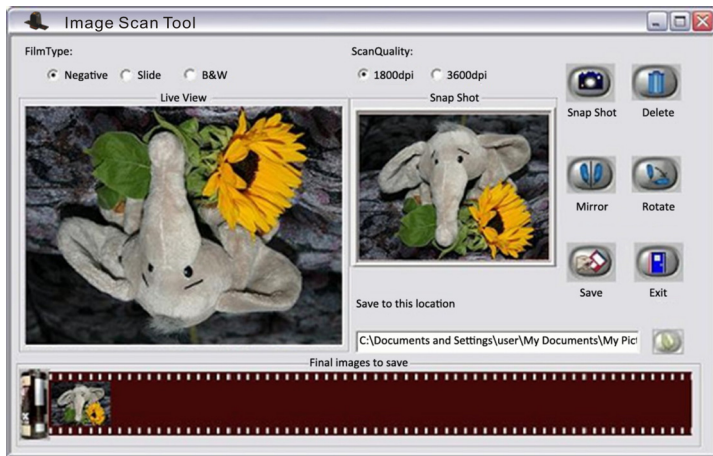


8. Get final images from PC for further review and edit

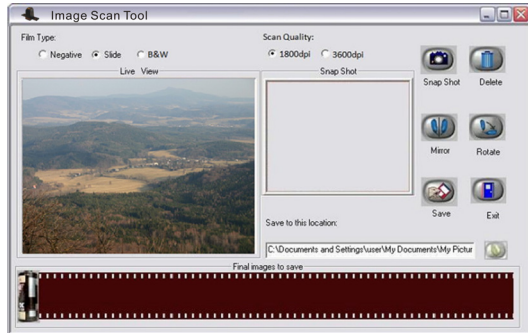


User interface introduction

When user selected a “Negative” source, the image in “Live View” window will be exactly like the processed result.



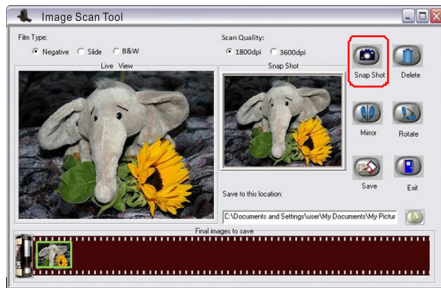
If device applies a slide, “Live View Type” will still show color image and the Film Type will remain the same.



This is the live view under black and white negative option.



User can convert images from traditional film to digital either by “Snap Shot” button in Image Scan Tool or the button on top of filmscanner. Then, the capture result will appear in the “Snap Shot” and “Final images to save” windowz.



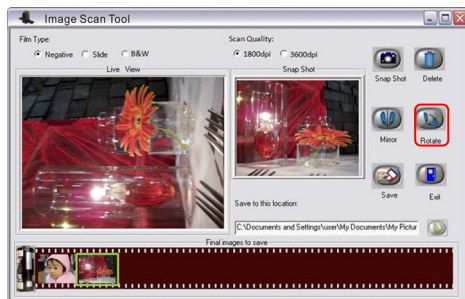
All of the effect in Image Scan Tool will be ready for instant preview in “Snap Shot” and “Final images to save” window.



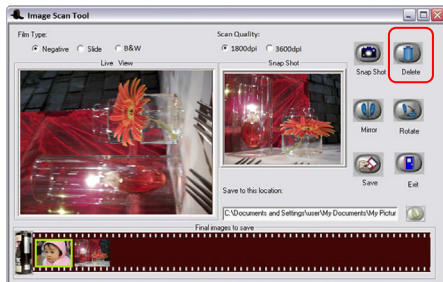
Apply the Mirror function by pressing the “Mirror” icon, that will flip the image and be shown in the “Snap Shot” window as well as the “Final images to save”.



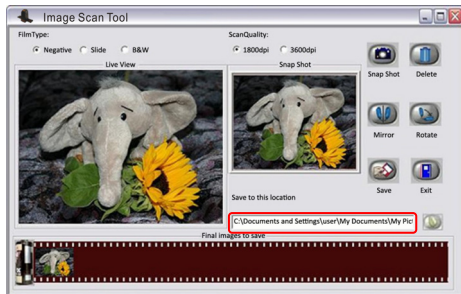
Or apply the Rotate function by pressing “Rotate” button, the image will be rotated 90 degrees each time. Images can be continuously rotated a full 360 degrees or until desired.



If user wishes to delete a specific image from captured pool, simply click the image under “Final image to save” again, then the selected image can be deleted directly by applying the “Delete” button.

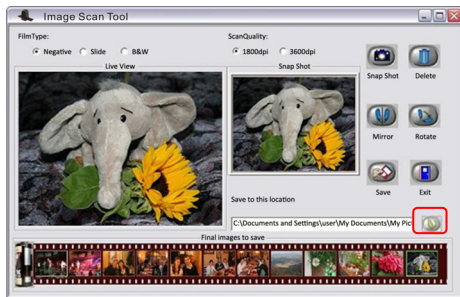


After modification, user can save the images to default location at “C:\Documents and Settings\Users\My Docuemtns\My Pictures”.

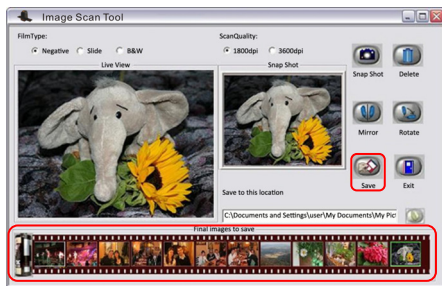


Or define preferable location for saving captures images by pressing directory button.

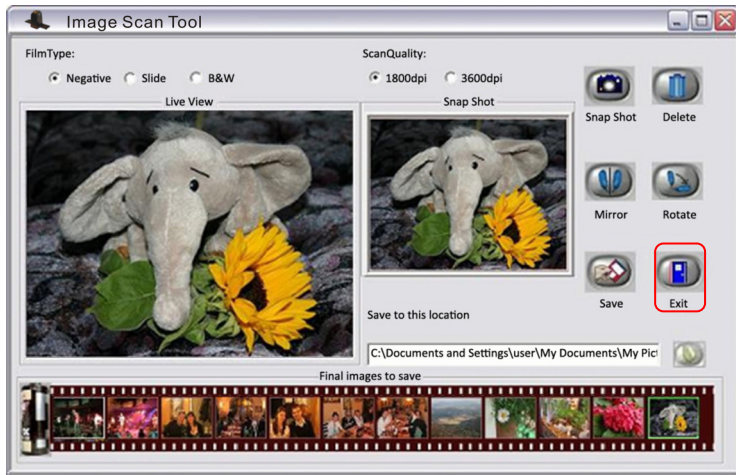
Another window will pop out for user to select required location.



Once press “Save” key, all of captures images will be saved into defined location. The “final image” saving window shall be empty after press the “Save” button.



When completed the capture, user can press “Exit” button to quit this Image Scan Tool. Then, review captured images or process more fancy modification with bundle software for PC.

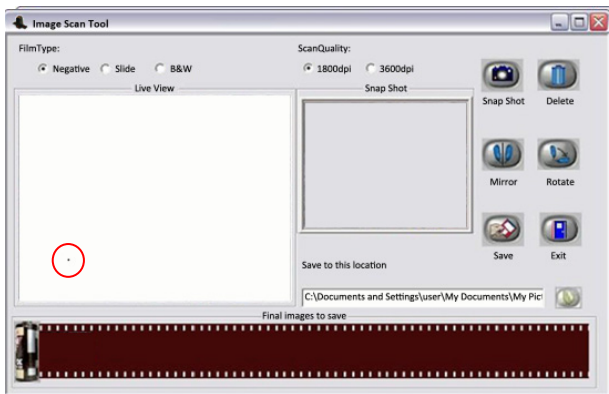


V. Specification

| | |
|-------------------|--|
| Image Sensor: | 5 mega CMOS sensor |
| Lens: | F no.= 2.0, 4 Glass elements, |
| Focus Range: | Fixed focus |
| Exposure Control: | Automatic |
| Color Balance: | Automatic |
| Scan Quality | 1,800 dpi /3,600 dpi(SW interpolation) |
| Data Conversion | 10 bits per color channel |
| Scan Method | Single pass |
| Light Source | Back light (3 white LEDs) |
| Interface: | USB 2.0 |
| Power: | USB port |
| Dimensions | 90.45x100.6x150.3mm |
| Weight | 0.392kg |
| Operating Systems | Windows XP/ Vista/Windows 7 |

VI. *Clean dust from film scanner*

Please remove the film folder from device when you found any dust on live view window.



Then you can use the clean brush to wipe the dust.

NOTE

- ✧ We strongly suggest using a clean, dry, non-alcohol cotton swab to clean the glass surface periodically to produce a clear image during operation.

NOTE

THE MANUFACTURER IS NOT RESPONSIBLE FOR ANY RADIO OR TV INTERFERENCE CAUSED BY UNAUTHORIZED MODIFICATIONS TO THIS EQUIPMENT. SUCH MODIFICATIONS COULD VOID THE USER AUTHORITY TO OPERATE THE EQUIPMENT.

This equipment has been tested and found to comply with the limits for a Class B digital device, pursuant to part 15 of the FCC Rules. These limits are designed to provide reasonable protection against harmful interference in a residential installation. This equipment generates, uses and can radiate radio frequency energy and, if not installed and used in accordance with the instructions, may cause harmful interference to radio communications. However, there is no guarantee that interference will not occur in a particular installation. If this equipment does cause harmful interference to radio or television reception, which can be determined by turning the equipment off and on, the user is encouraged to try to correct the interference by one or more of the following measures:

- Reorient or relocate the receiving antenna.
- Increase the separation between the equipment and receiver.
- Connect the equipment into an outlet on a circuit different from that to which the receiver is connected.
- Consult the dealer or an experienced radio/TV technician for help.
- Modifications not expressly approved by the manufacturer could void the user's authority to operate the equipment under FCC rules.