



innovative technology.



ITNS-400

User Manual

I. Unpack the ITNS-400



ITNS-400



Slide Film Holder



Negative Film Holder



User Manual



CD-ROM



USB cable



Clean Brush



Quick Installation Guide

Note

- ✧ This film scanner supports Windows XP, Vista/Windows7 (32/64bits) via USB 2.0 only.
- ✧ We strongly suggest using a clean, dry, non-alcohol cotton swab to insert into the film scanner slot and clean the glass surface periodically to produce a clear image.
- ✧ Make sure all negative films, slide films, and cover trays are free of dust and dirt before inserting into the ITNS-400 as this may affect the image quality when scanning.
- ✧ When cleaning films, please use a professionally recommended purger from a photo store to avoid damaging old or precious films.

II. Driver Installation

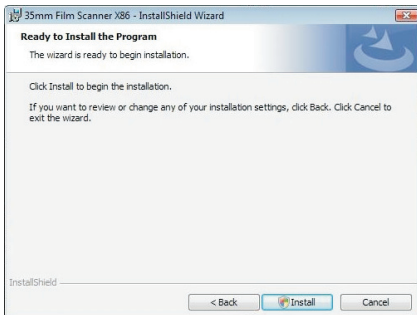
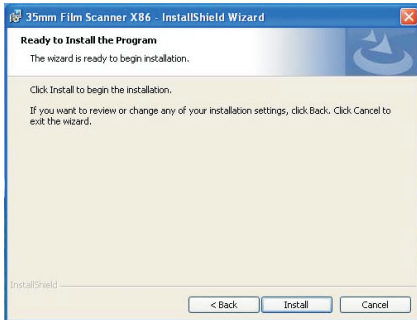


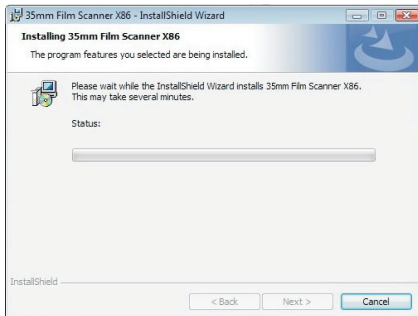
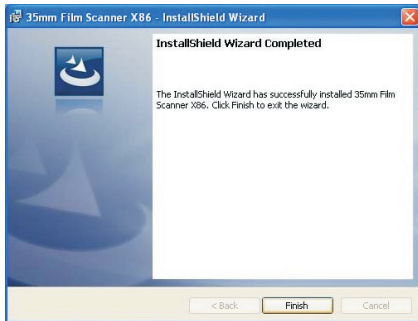
To use the ITNS-400, please complete the following installation in advance.

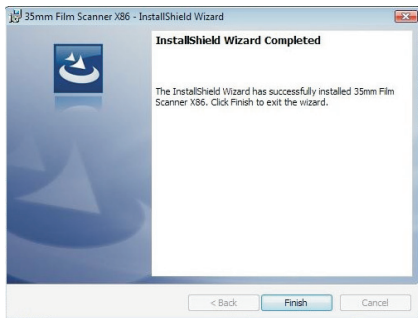
1. Turn on the computer
2. Insert the installation CD into the CD-ROM drive and the installation CD menu will appear.
3. Choose Installation.

4. Follow the on-screen instructions. (Windows XP, Vista/Windows7)

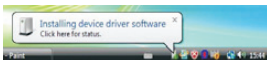
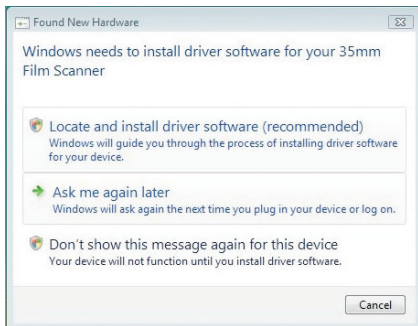
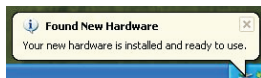




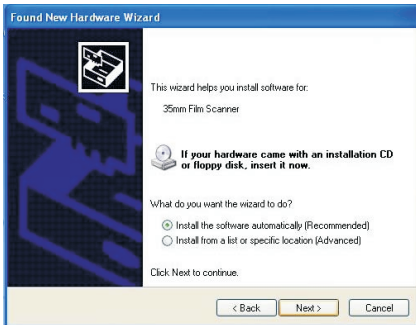




5. After completing software installation, please connect ITNS-400 to PC. The New Hardware Wizard will detect a new device.

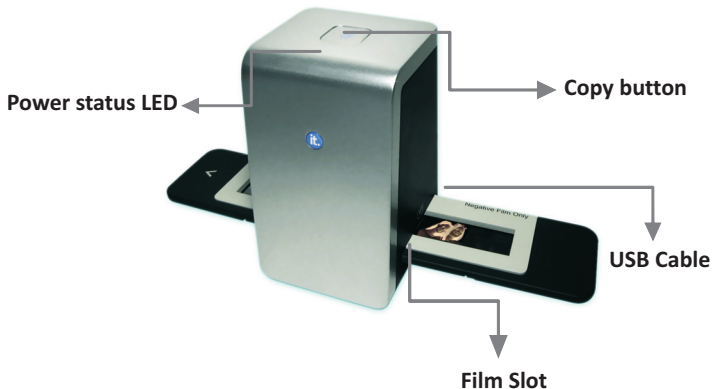


6. Select “Yes” in XP or “Locate and install driver software (recommended)” in Vista/Windows7 OS.



7. After completing the installation, the filmscanner is ready to start with “35mm FilmScanner” Image Scan Tool under program files. (Windows XP, Vista/Windows7) Restart is not required, but it is recommended to restart your PC after installation/un-installation.

III. Using the ITNS-400



Installing film into the film holder

Install slide Film into the holder entitled “Slides Only”

1. Open the slide holder as illustrated



2. Place slide in recessed slot in holder



3. Close the film holder



Install Negative Film into the holder entitled “Negative Film Only”:

1. Open the film holder as illustrated



2. Install film into negative film slot



3. Close the film holder



Note

- ✧ To avoid a mirror image, follow the serial numbers (from left to right) on top of film when installing negative film into holder.



Figure 1

- ✧ If the image is upside down [see fig.2], the image can be corrected by “Rotate” function in Image Scan Tool after capture [see fig.3].

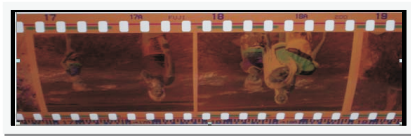


Figure 2

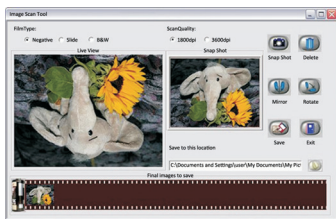


Figure 3

How to use ITNS-400

1. Put Film into film holder



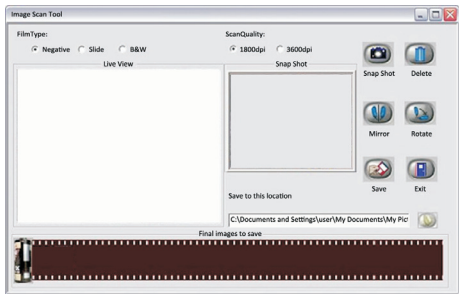
2. Insert the film holder into the right side of the ITNS-400 unit



3. Connect ITNS-400 to PC



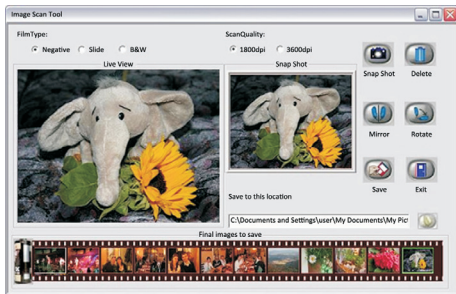
4. Click “Image Scan Tool” to enter operation interface as below



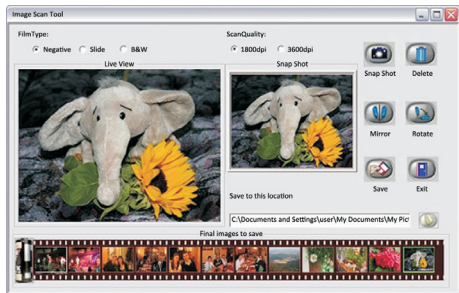
5. Press “Copy” button to capture the image



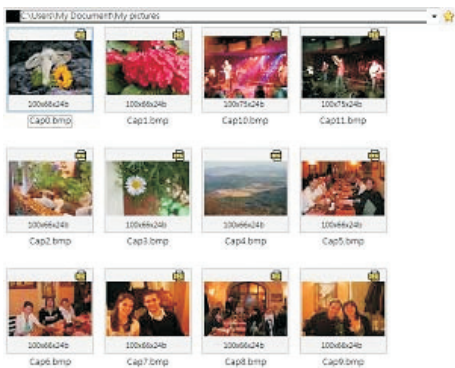
6. Process necessary modification by function buttons in right hand side



7. Save captured images to PC

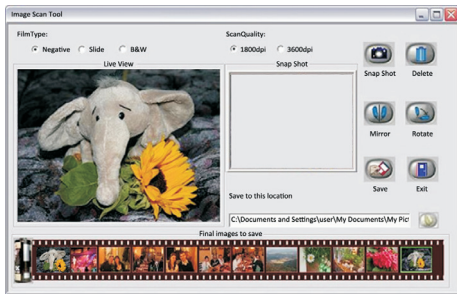


8. Get final images from PC for further review and edit

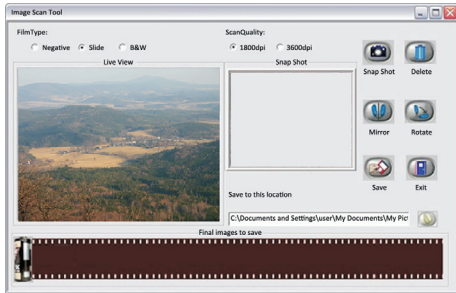


User interface introduction

When user selects a “Negative” source, the image in “Live View” window will be exactly like the processed result.



If device processes a slide, the “Live View” will show a color image and the Film Strip will remain the same.



This is the live view under black and white negative option.



User can convert images from traditional film to digital either by “Snap Shot” button in Image Scan Tool or the button on top of filmscanner. Then, the capture result will appear in the “Snap Shot” and “Final images to save” window.



Touch button

All of the effects in Image Scan Tool will be ready for instant preview in “Snap Shot” and “Final images to save” window.



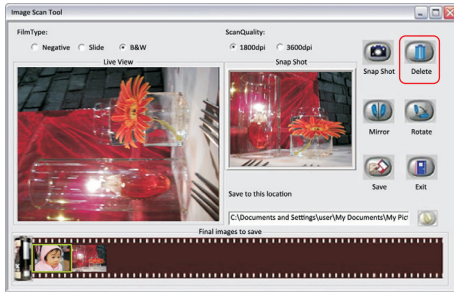
Apply the Mirror function by pressing the “Mirror” icon, that will flip the image and be shown in the “Snap Shot” window as well as the “Final images to save”.



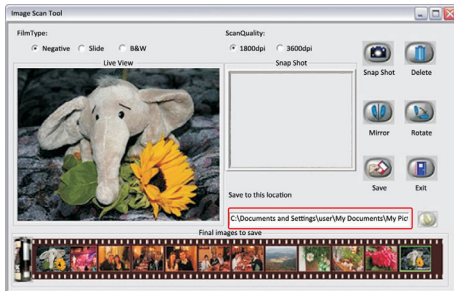
Or apply the Rotate function by pressing “Rotate” button, the image will be rotated 90 degrees each time. Images can be continuously rotated a full 360 degrees or until desired.



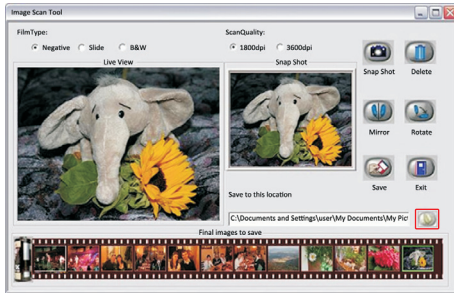
If the user wishes to delete a specific image from the capture pool, simply click the image under “Final image to save” again, then the selected image can be deleted by applying the “Delete” button.



After modification, user can save images to the default location at “C:\Documents and Settings\Users\My Documents\My Pictures”.



Or define preferable location for saving captures images by pressing the directory button. Another window will pop out for user to select required location.



Once press “Save” key, all of captures images will be saved into defined location. The “final image” saving window shall be empty after press the “Save” button.



When the capture is complete, the user can press “Exit” button to quit this Image Scan Tool, Then, review captured images or process more fancy modification with bundle software for PC.

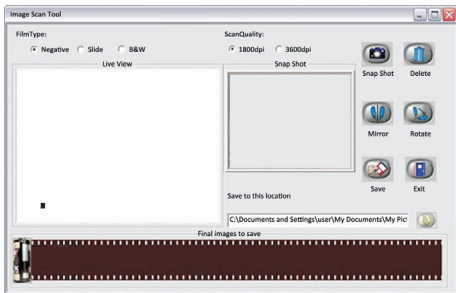


IV. Specification

| | |
|-------------------|--|
| Image Sensor: | 5 mega CMOS sensor |
| Lens: | F no.=2.0, 4 Glass elements, |
| Focus Range: | Fixed focus |
| Exposure Control: | Automatic |
| Color Balance | Automatic |
| Scan Quality | 1,800 dpi /3600 dpi (SW interpolation) |
| Data Conversion | 10 bits per color channel |
| Scan Method | Single pass |
| Light Source | Back light (3 white LEDs) |
| Interface: | USB 2.0 |
| Power: | USB port |
| Dimensions | W100.6 x L90.5 x H150.3mm |
| Weight | 0.39kg |
| Operating Systems | Windows XP/Vista/Windows 7 |

V. Cleaning the ITNS-400

Please remove the film holder from device when you notice any dust in the live view window.



Then you can use the cleaning brush to wipe away dust.

Note

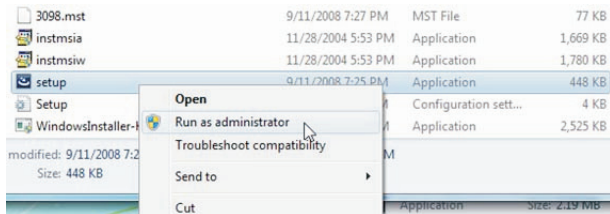
- ✧ We strongly suggest using a clean, dry, non-alcohol cotton swab to clean the glass surface periodically to produce a clear image during operation.

ITNS-400 Trouble shooting

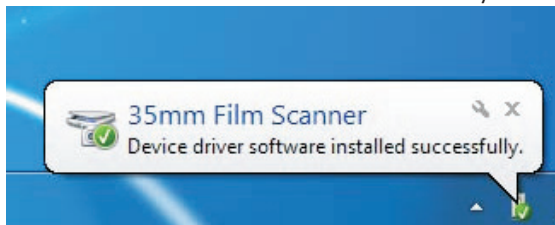
Question 1. How to install ITNS-400 driver?

Solution :

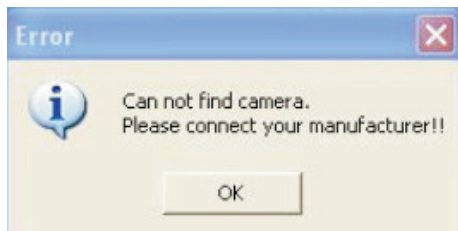
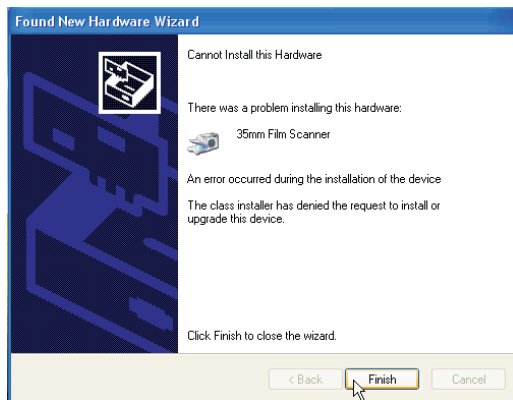
01. Put FilmScan Driver CD - ROM into your CD player.
02. Open the X (CD - ROM) : \Driver\ folder.
03. Click mouse right button on setup. exe, and click “Run as administrator” to install driver.

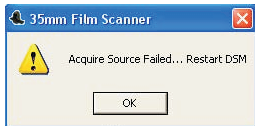


04. The InstallShield Wizard will show the message of “InstallShield Wizard Completed once the driver installed ready.
05. Connect ITNS-400 to your PC, the PC will complete the device driver installation and confirm driver installed successfully.



Question 2. Came up the error message “Cannot Install This Hardware” or “Can not find camera. Please connect your manufacturer” or “Acquire Source Failed...Restart DSM”





Solution:

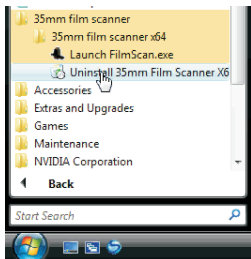
01. Check your USB cable to make sure it is well connected to your PC and your device.

02. Check your PC to verify the driver is installed properly.

03. Uninstall the existing driver from your system.

a. Using the uninstall program of ITNS-400 application

Run start → All programs (Vista/Win7) or Program files (XP) → 35mm film scanner → 35mm film scanner → Uninstall 35mm Film Scanner



b. or Using the tool in device manager

(1) Open Device Manager.

Windows XP

Open Start → Setting → Control Panel → System → Hardware → Device Manager

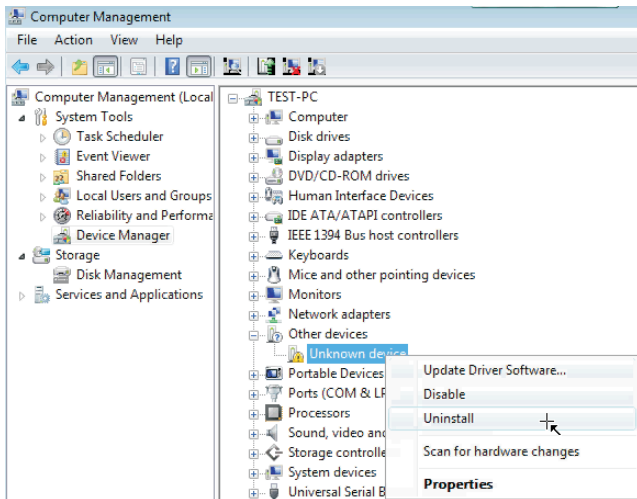
Windows Vista

Open Start → Control Panel → System → Device Manager

Windows 7

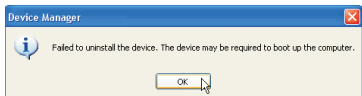
Open Start → Control Panel → System and Security → System → Device Manager

(2) Click the right button of mouse from “Unknown device” and uninstall the driver.



04. Re-install proper driver version again.

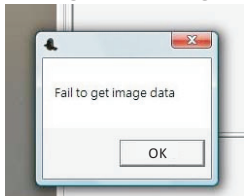
Question 3. If you can't uninstall the driver or came up the error message "Can't find the device, you may plug-in the device and try again." or "Failed to uninstall the device. The device may be required to boot up the computer."



Solution:

Please refer to Question 2 solution and reboot your computer, if it still can't work, please contact us through e-mail support@ithomeproducts.com

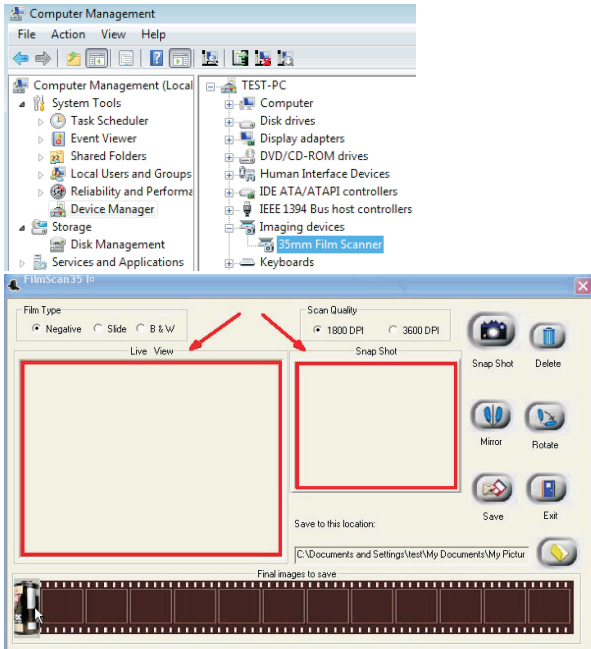
Question 4. Run the ITNS-400 application and come up the error message "Fail to get image data"



Solution:

Close the application then re-start the ITNS-400 application again.

Question 5. You can't see the pre-view image from ITNS-400 application when you have re-installed driver and device status is completed.

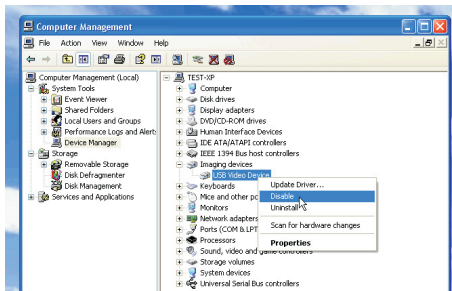


Reason: Devices conflict. (Such as USB cameras or devices.)

Solution:

01. Disable the other imaging devices by using bundled program in standard package first or disable it by the option under Imaging device when press right button of mouse.

02. Re-start ITNS-400 application again.



Question 6. Come up the error message “General failure in transfer bad info header info. Bad value error”.



Reason: Plug device into USB1.1 port.

Solution:

ITNS-400 only supports USB 2.0. Please verify if your PC is compatible with USB2.0.

01 Open Device Manager.

Windows XP

Open Start → Setting → Control Panel → System → Hardware → Device Manager

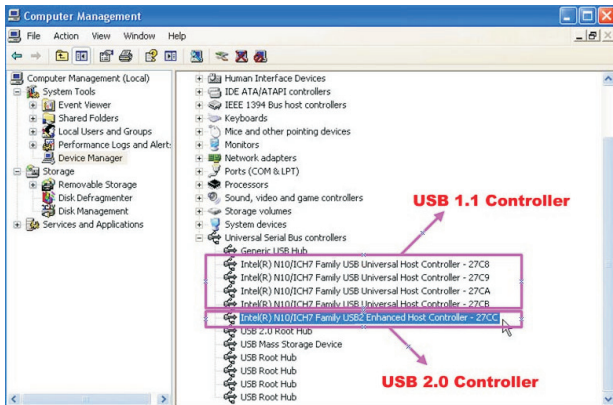
Windows Vista

Open Start → Control Panel → System → Device Manager

Windows 7

Open Start → Control Panel → System and Security → System → Device Manager

02 Your computer must with a USB 2.0 Controller in Universal Serial Bus controllers. The figure below shows the difference between USB1.1 and 2.0. There must be a “USB2” for USB 2.0 controller.



Innovative Technology Electronics Corp.
Limited Warranty
90 Days Labor, One Year Parts

Innovative Technology Electronics Corp. (IT) warrants the product to be free from “ Defects ” in materials under normal use for a period of “ One Year ” from the date of the original purchase. The Warranty is “ Not ” transferable. IT agrees, within the initial “ 90 Day ” period, to repair the product if it is determined to be defective at “ No Charge ” . It is further agreed that IT will cover the cost to repair or replace damaged “ Parts ” only for a total period of “ One Year ” from the date of the original purchase. The warranty does not cover cosmetic damage, antennas, AC cords, cabinets, headbands, ear-pads, or damage due to line power surges, connection to improper voltage supply or settings, misuse, mishandling, accident, acts of God or attempted repair by an unauthorized service agent.

To obtain service, the original purchaser MUST present a sales receipt/proof of purchase indicating date of purchase, amount paid, and place of purchase. Send the unit prepaid to the address below in the original packaging or reasonable substitute to prevent damage. You “ MUST ” include your full name, shipping address and telephone number. No return will be shipped back to a PO Box. Please include your check or money order in the amount of \$12. 00, payable to Innovative Technology Electronics Corp. to cover handling and return shipping charges. (IT) will not be responsible for delays or unprocessed claims resulting from a purchaser’s failure to provide any or all of the necessary information.

Send all inquiries or returns to:

Customer Service Dept.
Innovative Technology Electronics Corp.
4 Anchorway, Port Washington, NY 11050
Tel : 1-877-ITECH-97 (1-877-483-2497)
Website : www.ithomeproducts.com
EMAIL : support@ithomeproducts.com

There are no express warranties except as listed above

REPAIR OR REPLACEMENT AS PROVIDED UNDER THIS WARRANTY IS THE EXCLUSIVE REMEDY OF THE CUSTOMER, (IT) SHALL NOT BE LIABLE FOR ANY INCIDENTAL OR CONSEQUENTIAL DAMAGES FOR BREACH OF ANY EXPRESS OR IMPLIED WARRANTY ON THIS PRODUCT EXCEPT TO THE EXTENT PROHIBITED BY APPLICABLE LAW. ANY IMPLIED WARRANTY OF MERCHANTABILITY OR FITNESS FOR A PARTICULAR PURPOSE ON THIS PRODUCT IS LIMITED IN DURATION TO THE DURATION OF THIS WARRANTY.

Some states do not allow the exclusion or limitation of incidental or consequential damages, or limitations on how long an implied warranty lasts, so the above exclusions or limitations may not apply to you. This warranty gives you specific legal rights and you may also have other rights, which vary from state to state.



Instructions shall caution users that modifications not approved by the party responsible for compliance could void user's authority to operate the equipment.

The following or equivalent as appropriate:

“NOTE: This equipment has been tested and found to comply with the limits for a Class B digital device, pursuant to Part 15 of the FCC Rules. These limits are designed to provide reasonable protection against harmful interference in a residential installation. This equipment generates, uses and can radiate radio frequency energy and, if not installed and used in accordance with the instructions, may cause harmful interference to radio communications. However, there is no guarantee that interference will not occur in a particular installation.

If this equipment does cause harmful interference to radio or television reception, which can be determined by turning the equipment off and on, the user is encouraged to try to correct the interference by one or more of the following measures:

- Reorient or relocate the receiving antenna.
- Increase the separation between the equipment and receiver.
- Connect the equipment into an outlet on a circuit different from that to which the receiver is connected.
- Consult the dealer or an experienced radio/TV technician for help.”

Statement that the product complies with Part 15 (i.e. “This device complies with Part 15 of the FCC Rules. Operation is subject to the following two conditions: (1) This device may not cause harmful interference, and (2) this device must accept any interference received, including interference that may cause undesired operation.”)

CALIFORNIA PROP 65 WARNING

WARNING : This product contains chemicals known to the State of California to cause birth defects or other reproductive harm. For more information on these regulations and a list of chemicals, log on the following website address:
<http://www.oehha.ca.gov/prop65.html>

