

EU3C FilmScan35 I



Quick Installation Guide

Version 2.00
March 2009

I. *Unpack FilmScan35 I*



FilmScan35 I



Negative Film Holder



Slide Film Holder



CD-ROM



USB cable



Clean bursh



Quick Installation Guide

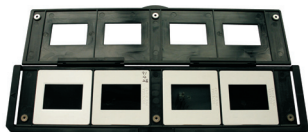
II. *Install a film/slide into holder*

● *Install the Slide into holder*

1. Open the slide holder as illustrated



2. Put slide into positive slide slot



3. Close the film holder



- ***Install the Negative Film into holder***

1. Open the film holder as illustrated



2. Install film into negative film slot



3. Close the film holder



Note

✧ To avoid mirror image, follow the serial numbers (from left to right) on top of film when install negative film into holder.



Figure 1

✧ If the image is upside down [see fig. 2], the image can be corrected by continuously “Rotate” function in AP after capture[see fig. 3].

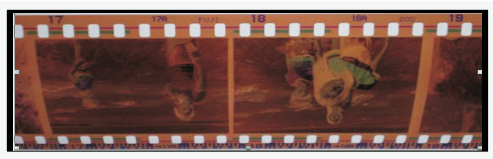


Figure 2

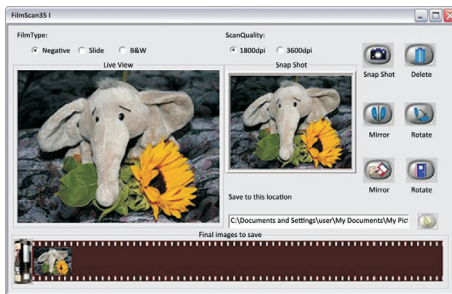


Figure 3

II. FilmScan35 I Installation

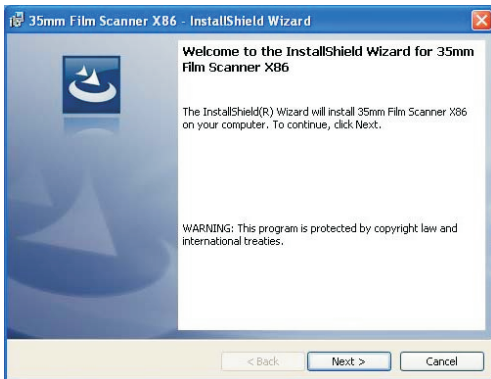
1. Insert unpacked CD into CD-ROM/DVD-ROM drive
2. Press Installation option in window

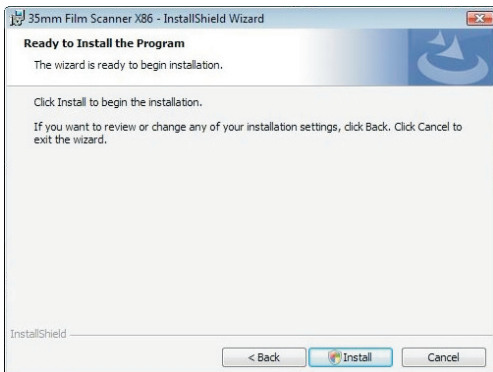
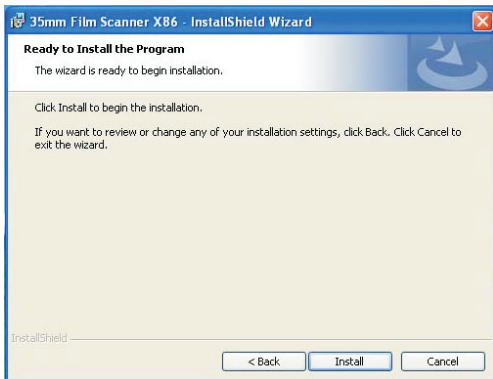


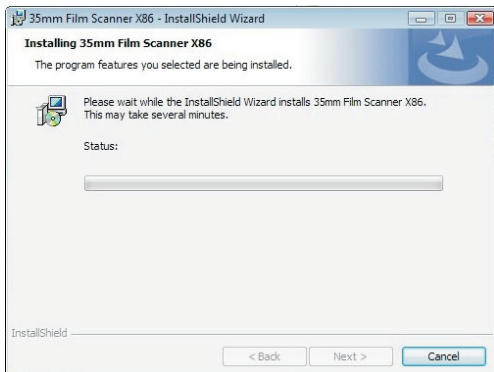
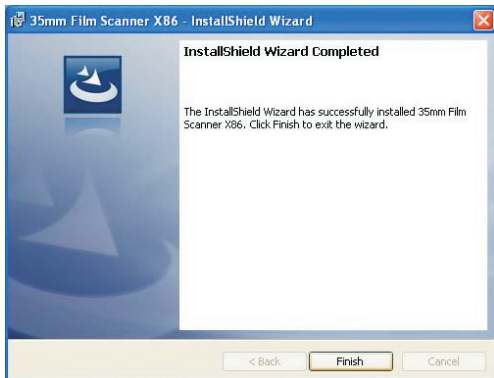
Note

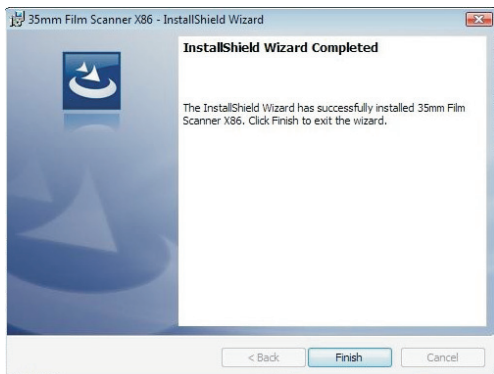
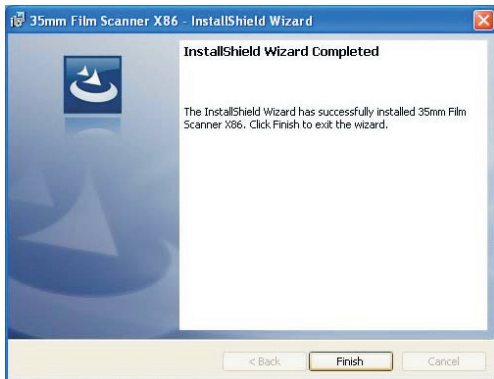
- ✧ If install PC is Windows XP/Vista 64 bits system, please select “Installation x64/64bits” for installation.

1. Follow the on-screen instructions. (XP/Vista)





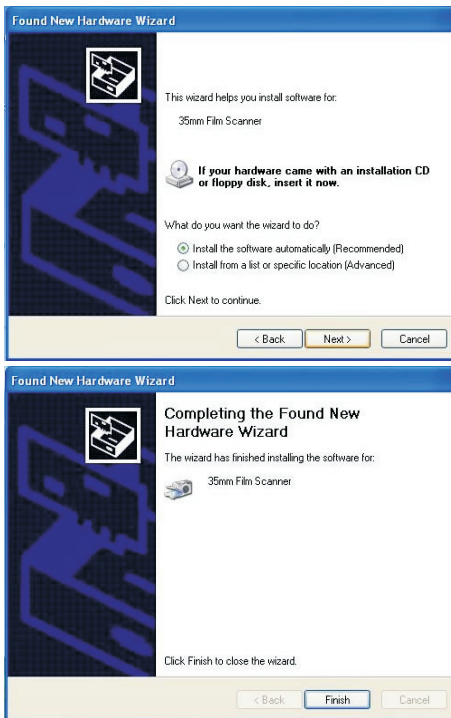




2. After completing software installation, please connect FilmScan35 I to PC. The New Hardware Wizard will detect a new device.



3. Select “Yes” in XP or “locate and install driver software(recommended)” in Vista OS.



4. After completing the installation, the filmscanner is ready to start with “35mm FilmScanner AP under program files. (XP/Vista)

Note

✧ FilmScan35 I supports Windows XP/Vista (32-bit and 64 bit) only

II. Use FilmScan35 I

● Function Indicator



● Start to use FilmScan35 I

1. Put Film into film slot



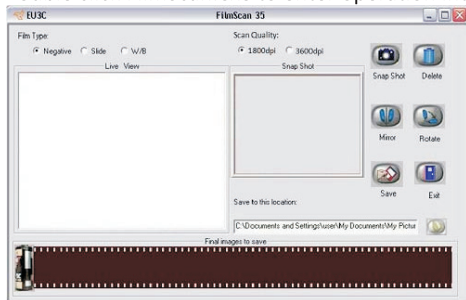
2. Insert the slot into FilmScan35 I



3. Connect FilmScan35 I to PC



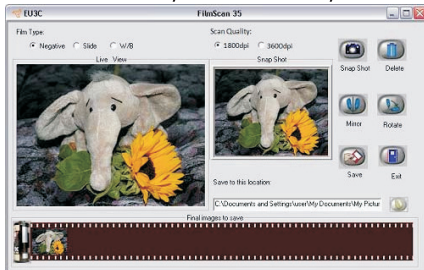
4. Double click FilmScan.exe to enter operation interface.



5. Press "Copy" button to capture the image



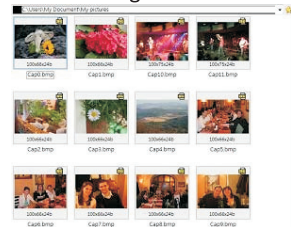
6. Process necessary modification by function buttons in right hand side.



7. Save captured images to PC.



8. Get final images from PC for further review and edit.



NOTE

THE MANUFACTURER IS NOT RESPONSIBLE FOR ANY RADIO OR TV INTERFERENCE CAUSED BY UNAUTHORIZED MODIFICATIONS TO THIS EQUIPMENT. SUCH MODIFICATIONS COULD VOID THE USER AUTHORITY TO OPERATE THE EQUIPMENT.

This equipment has been tested and found to comply with the limits for a Class B digital device, pursuant to part 15 of the FCC Rules. These limits are designed to provide reasonable protection against harmful interference in a residential installation. This equipment generates, uses and can radiate radio frequency energy and, if not installed and used in accordance with the instructions, may cause harmful interference to radio communications. However, there is no guarantee that interference will not occur in a particular installation. If this equipment does cause harmful interference to radio or television reception, which can be determined by turning the equipment off and on, the user is encouraged to try to correct the interference by one or more of the following measures:

- Reorient or relocate the receiving antenna.
- Increase the separation between the equipment and receiver.
- Connect the equipment into an outlet on a circuit different from that to which the receiver is connected.
- Consult the dealer or an experienced radio/TV technician for help.
- Modifications not expressly approved by the manufacturer could void the user's authority to operate the equipment under FCC rules.