



WARNING:
CHOKING HAZARD - Small parts
Not for children under 3 years



Recharge battery before operation!

* Please read entire manual prior to operation. * Keep box and manual for future reference.

Safety precautions:

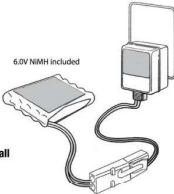
- USE UNDER CLOSE SUPERVISION OF ADULT!
- Always select a safe place to play. Never drive your vehicle near the street.
- Operate only in fresh water with little to no current.
- Do not operate in water during heavy winds.
- While in operation, keep fingers, hair and loose clothing away from tires, wheel hubs or motors.
- Never operate in salt water.

CAUTION-ELECTRONIC TOY: NOT RECOMMENDED FOR CHILDREN UNDER 5 YEARS OF AGE. AS WITH ALL ELECTRONIC PRODUCTS, PRECAUTIONS SHOULD BE TAKEN DURING HANDLING AND USE TO AVOID ELECTRICAL SHOCK.
MODEL: AD-1230-UL(8) INPUT: AC120V 60Hz 7W OUTPUT: DC7.2 200mA

BATTERY RECHARGE:

6.0V Battery Pack Charge - Please use under close adult supervision (NOTE)

1. New battery pack must be charged for 5 1/2 hours the first two times. Subsequent charges will require 4 hrs. Charging the battery pack for more than 5 1/2 hrs will not give you a longer running time. 4 hrs is all that required.
2. Join the connector of the charger to the connector of the battery pack.
3. Plug the charger into an electrical outlet.
4. After charging is complete, detach the charger from the outlet and disconnect the battery from the charger.
5. Unlike alkaline batteries which lose power gradually, a rechargeable battery will run for its normal running time and then lose most of its power at once. That's when you'll need to recharge the battery pack.
6. After use, the battery pack will be hot! Wait until the battery pack cools before recharge. Recharge a warm or hot battery pack will greatly reduce the number of times your battery pack can be recharged.
7. The charger must be disconnected from the electricity supply when charging is completed.



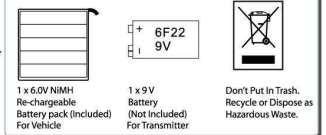
CAUTION:

- * Do not charge battery immediately after play, please cool down the battery pack before recharge.
- * Avoid short circuits-they can cause overheating, burning and other damages to the battery and charger.
- * The battery charger should only be used to recharge the battery pack provided. Only charge one battery at a time.
- * Do not use the charger as an outlet for other electrical appliances.
- * Keep the battery pack and charger out of reach by infants and children while in use.
- * Do not charge near fire, hot temperatures or wet damp areas.
- * Charger may become warm while in use, allow sufficient space during this time.
- * If the battery pack remains weak after proper charging techniques, dispose of it correctly and replace with a new battery pack.
- * This product uses a NICKEL-CADMIUM rechargeable battery pack. The battery pack must be recycled or disposed of properly.
- * Disconnect the supply before making/ breaking the battery connection.
- * Only use this battery charger for the battery pack provided.
- * Regularly examine for damage to the plug enclosure and other parts. In the event of any damage, the toy must not be used with the charger until the damage has been repaired.
- * The charger is not a toy.
- * DO NOT RECHARGE NON-RECHARGEABLE BATTERIES!

BATTERY CAUTION:

1. Alkaline battery is recommended.
2. Non-rechargeable batteries are not to be recharged.
3. Rechargeable batteries are to be removed from the toy before being charged.
4. Rechargeable batteries are only to be charged under adult supervision.
5. Do not mix alkaline, standard (carbon-zinc), or rechargeable (nickel-cadmium) batteries.
6. Do not mix old and new batteries.
7. Only batteries of the same or equivalent types as recommended are to be used.
8. Batteries are to be inserted with the correct polarity.
9. The supply terminals are not to be short-circuited.
10. If batteries are loose, bend out the contacts for a tighter fit.
11. Exhausted batteries are to be removed from the toy and be disposed of immediately; never dispose of batteries in fire.
12. If storing product for long periods of time, make sure to remove batteries.
13. Check the product periodically for signs of damage to electrical parts; do not play with product until damage has been properly assessed.

If the unit malfunctions, please remove the batteries for one minute and reinstall again. If the malfunctions persist, please replace with new batteries. BATTERIES SHOULD BE INSTALLED BY ADULTS ONLY.



CONTENT:



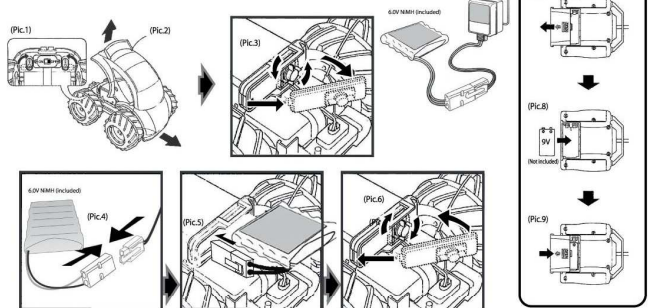
BATTERY INSTALLATION

Splash Wheeler

1. Make sure the power switch is on OFF position (Pic.1).
2. Unlock 2 body knobs (Pic.1) and release the body from chassis (Pic.2).
3. Unlock the battery compartment lock and open the battery door (Pic.3).
4. Connect the plugs on the battery with that in the battery compartment (Pic.4).
5. Then insert into the battery compartment (Pic.5).
6. Close the battery door and lock the battery compartment lock (Pic.6).
6. Put back the car body and lock these 2 body knobs to secure.

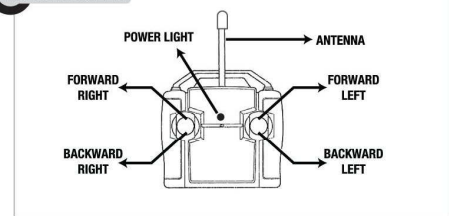
Transmitter

1. Slide the battery door as shown (Pic.7).
2. Put the 9V battery in the battery compartment as per the polarities shown inside (Pic.8).
3. Slide back the battery door as shown (Pic.9).



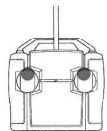
Caution: changes or modifications not expressly approved by the party responsible for compliance could void the user's authority to operate the equipment.

RC CONTROLLER



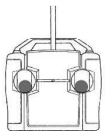
HOW TO MOVE - FORWARD

Move the left and right stick forward at the same time to move FORWARD.



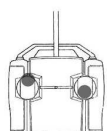
HOW TO MOVE - BACKWARD

Move the left and right stick backward at the same time to move BACKWARD.



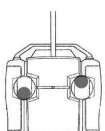
HOW TO TURN - RIGHT

Move the left stick forward and right stick backward to turn RIGHT.



HOW TO TURN - LEFT

Move the left stick backward and right stick forward to turn LEFT.



HOW TO CONTROL BY R/C

Running time and reception

- * Please note that the running time of the battery is affected by many variables. This product will operate optimally with a fully charged 7.2 V rechargeable battery pack. If the vehicle begins to lose power, remove the battery pack. Let it cool down for 20 minutes and recharge.
- * The ideal transmission range is 20m outdoor.
- * Although a rare occurrence, you may encounter loss of reception or loss of vehicle control due to interference, most commonly caused by high tension wires, transformers, narrow buildings, other radio control vehicles or CB radios.
- * If you do encounter these types of interference, it is best to find a different location to operate your radio control vehicle.

TROUBLESHOOTING

Please follow the tips below if you encounter any problem with your radio control vehicles:

Vehicle does not function

- * Ensure that the rechargeable battery in the vehicle is fully charged. A battery that is not fully charged may result in less than peak performance.
- * Inspect the 9V battery in the controller. Make sure that they are not weak or damaged. Also ensure that the "+" and "-" are correctly matched in the controller.
- * Ensure that the ON/OFF switch on the vehicle is in the "ON" position. Check the "ON/OFF" switch on the controller as well.
- * Shorten the distance between the controller and the vehicle to ensure proper reception.

Vehicle moves without signal

- * There may be radio interference in the area. Try operate in a different location.
- * Check to see if there is another radio controlled vehicle in close proximity. Their frequency may be interfering with yours.
- * Make sure that the antenna is tightly secured to the transmitter. Also ensure that it is fully extended on the controller.
- * Avoid wetting the antenna on the vehicle.
- * Avoid reducing the length of the antenna on the vehicle.

Vehicle operates slowly

- * The batteries are probably weak. Recharge the 6.0V rechargeable battery or replace the controller battery.
- * The rechargeable battery may need to be replaced because it can no longer hold a charge.
- * The controller battery is not alkaline or is exhausted. Try replace it with a new alkaline battery.

FCC Statements

This device complies with part 15 of the FCC rules. Operation is subject to the following two conditions:

- 1) This device may not cause harmful interference, and
- 2) This device must accept any interference received, including interference that may cause undesired operation.

NOTE: This equipment has been tested and found to comply with the limits of a Class B digital device, pursuant to Part 15 of the FCC Rules. These limits are designed to provide reasonable protection against harmful interference in residential installation. This equipment generates, uses and can radiate radio frequency energy and, if not installed and used in accordance with the instructions, may cause harmful interference to radio communications. However, there is no guarantee that interference will not occur in a particular installation. If this equipment does cause harmful interference to radio or television reception, which can be determined by turning equipment off and on, the user is encouraged to try to correct the interference by one or more of the following measures:

- Reorient or relocate the receiving antenna.
- Increase the separation between the equipment and receiver.
- Connect the equipment into an outlet on a circuit different from that to which the receiver is connected.
- Consult the dealer or an experienced radio/TV technician for help.
- Warning: Changes or modifications to this unit not expressly approved by the party responsible for compliance could void the user's authority to operate the equipment.
- Colors, designs & contents may vary.
- Please keep this packaging for future reference.
- Conforms to the safety requirements of ASTM F963.

