

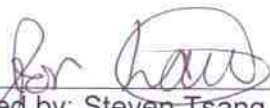


TEST REPORT No: (5211)181-0001

TEST REPORT

To:	PLAYMIND LTD.	To:	-
Attn:	Leo Ng / Carrie Yong	Attn:	-
Address:	Rm 413-415, Houston Centre, 63 Mody Road, TST East, Kowloon	Address:	-
Fax:	2375 7439	Fax:	-
E-mail:	leo@playmindltd.com / carrie@playmindltd.com	E-mail:	-
Folder No.:	BVCK11JY042MTHS-B		
Factory name:	PLAYMIND LTD.		
Location:	--		
Product:	RC Pro Kart Model No.: 24606		
		Sample No:	(5211)181-0001
		Test date:	July 11, 2011
		Test Requested:	FCC Part 15 – 2010
		Test Method:	ANSI C63.4 – 2003
		FCC ID:	WFE24606-49-TX
The results given in this report are related to the tested specimen of the described electrical apparatus.			
CONCLUSION: The submitted sample was found to <u>COMPLY</u> with requirement of FCC Part 15 Subpart C.			
Authorized Signature:			
			
Reviewed by: Keith Yeung		Approved by: Steven Tsang	
Date: September 19, 2011		Date: September 19, 2011	

BUREAU VERITAS HONG KONG LIMITED –
Kowloon Bay Office
 1/F Pacific Trade Centre,
 2 Kai Hing Road, Kowloon Bay,
 Kowloon, HONG KONG
 Tel: +852 2331 0888
 Fax: +852 2331 0889
www.cps.bureauveritas.com

This report is intended for your exclusive use. Any copying or replication of this report to or for any other person or entity, or use of our name or trademark, is permitted only with our prior written permission. Our report is limited to the test samples identified herein. The results set forth in this report are not necessarily indicative or representative of the statistical quality or characteristics of the lot from which a test sample was taken or any similar or identical product unless specifically and expressly noted. Our report includes all of the tests requested by you and the results thereof. You shall have thirty days from receipt of this report to request additional testing of the samples or to notify us of any errors or omissions relating to our report, provided, however, such notice shall be in writing and shall specifically address the issue you wish to raise. A failure to raise such issue within the prescribed time shall constitute your unqualified acceptance of the completeness of this report, the tests conducted and the correctness of the report contents.



TEST REPORT No: (5211)181-0001

Location of the test laboratory

Radiated and Conducted emissions measurements are investigated and taken pursuant to the procedures of ANSI C63.4 – 2003. An Open Area Test Site and Full Anechoic Chamber (FCC Listed Site, Registration No. 642151) are set up for investigation and located at :

BUREAU VERITAS HONG KONG LIMITED, EMC CENTRE

No. 2106-2107, 21/F., Westin Centre,
26 Hung To Road,
Kwun Tong, Kowloon,
Hong Kong

List of measuring equipment

Radiated Emission

EQUIPMENT	MANUFACTURER	MODEL NO.	SERIAL NO.	CALIBRATION DUE
EMI TEST RECEIVER	R&S	ESCI	100379	06-SEP-2011
BILOG ANTENNA	SCHAFFNER	CBL6112D	25229	02-AUG-2011
OPEN AREA TEST SITE	BVCPS	N/A	N/A	07-JULY-2012
ANECHOIC CHAMBER	ALBATROSS	M-CDC	80374004499B	26-OCT-2011
COAXIAL CABLE	SUHNER	N/A	N/A	19-SEP-2011

Remarks:-

N/A : Not Applicable or Not Available

The measurement instrumentation uncertainty would be taking into consideration on each of the test result

TEST REPORT No: (5211)181-0001

Equipment Under Test [EUT]

Description of Sample:

Model Name: RC Pro Kart
Model Number: 24606
Rating: 9Vd.c. ("6F22" size battery x 1)

Description of EUT Operation:

The Equipment Under Test (EUT) is a PLAYMIND LTD. of Radio Control toy. It is 2 sticks and 1 switch transmitter and operating at 49.86MHz. The EUT continues to transmit while sticks are being pushed or pulled, Modulation by IC, and type is pulse modulation.

The transmitter has different control:

1. Left stick – Forward and backward control
2. Right stick – Rightward and leftward control
3. ON/OFF switch – ON/OFF control

Antenna Requirement (Section 15.203)

The EUT is use of a screw-on type antenna. The antenna consists of 44cm long metal antenna. The antenna connector is custom-made and not be able to found in the market. It also cannot be replaced with other antenna other then the one bundled inside the package. The requirements of S15.203 are met. There are no deviations or exceptions to the specifications.

Photo of Antenna



TEST REPORT No: (5211)181-0001

Test Results

Radiated Emissions (Fundamental)

Test Requirement: FCC Part 15 Section 15.235
Test Method: ANSI C63.4
Test Date(s): 2011-07-11
Temperature: 31.0 °C
Humidity: 81.0 %
Atmospheric Pressure: 100.8 kPa
Mode of Operation: Transmission mode
Tested Voltage: 9Vd.c. ("6F22" size battery x 1)

Test Procedure:

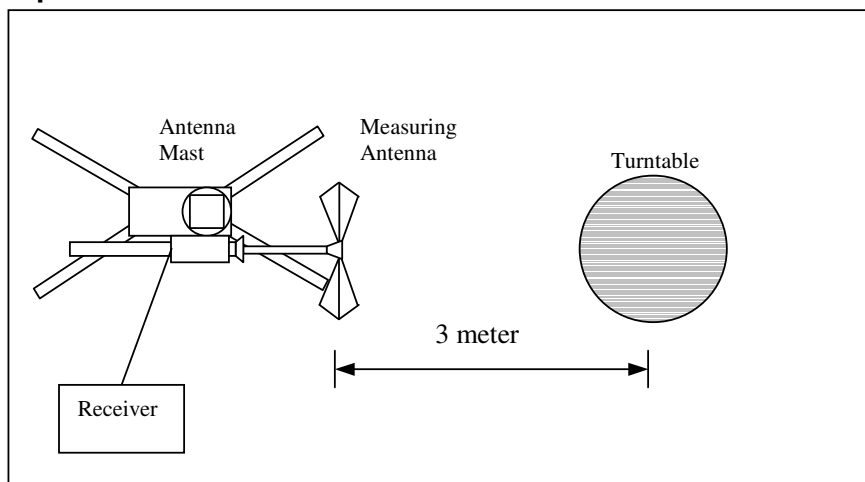
Radiated emissions measurements are investigated and taken pursuant to the procedures of ANSI C63.4 – 2003.

The equipment under test (EUT) was placed on a non-conductive turntable with dimensions of 1.5m x 1m and 0.8m high above the ground. 3m from the EUT, a broadband antenna mounting on the mast received the signal strength. During the test, each emission was maximized by: having the EUT continuously working, investigated all operating modes, rotated about all 3 axis (X, Y & Z) and considered typical configuration to obtain worst position, manipulating interconnecting cables, For battery operated equipment, the equipment tests shall be perform using new battery. The turntable was rotated to maximize the emission level. The antenna was then moving along the mast from 1m up to 4m until no more higher value was found. Both horizontal and vertical polarization of the antenna were placed and investigated.

For below 30MHz, a loop antenna with its vertical plane is place 3m from the EUT and rotated about its vertical axis for maximum response at each azimuth about the EUT. And the centre of the loop shall be 1m above the ground.

Location: The Roof, Westin Centre, 26 Hung To Road, Kwun Tong, Kowloon, Hong Kong

Test Setup: Open Area Test Site



TEST REPORT No: (5211)181-0001

Limits for Field Strength of Fundamental Emissions [FCC 47CFR 15.235]:

Frequency Range of Fundamental [MHz]	Field Strength of Fundamental Emission [Peak] [μV/m]	Field Strength of Fundamental Emission [Average] [μV/m]
49.82 – 49.90	100,000 (100 dBμV/m)	10,000 (80 dBμV/m)

Measurement Data

Test Result of (Transmission mode): PASS

Detection mode: Peak

Frequency (MHz)	Polarity (H/V) and degree	Antenna Factor and Cable Loss (dB/m)	Field Strength at 3m (dBμV/m)	Limit at 3m (dBμV/m)	Margin (dB)
49.86	H	7.8	73.5	100	-26.5

Detection mode: # Average

Frequency (MHz)	Polarity (H/V) and degree	Antenna Factor and Cable Loss (dB/m)	Field Strength at 3m (dBμV/m)	Limit at 3m (dBμV/m)	Margin (dB)
49.86	H	7.8	**69.6	80	-10.4

For pulse modulated devices and using measuring equipment employing a peak detection mode, properly adjusted for such factor as pulse desensitisation.

**Duty Cycle Correction = $20\log(0.638) = -3.9\text{dB}$

Note: Field Strength includes Antenna Factor and Cable Loss.

Receiver setting: RBW = 100KHz
VBW = 300KHz



TEST REPORT No: (5211)181-0001

Radiated Emissions (9kHz – 1GHz)

Test Requirement: FCC Part 15 Section 15.209
Test Method: ANSI C63.4
Test Date(s): 2011-07-11
Temperature: 31.0 °C
Humidity: 81.0 %
Atmospheric Pressure: 100.8 kPa
Mode of Operation: Transmission mode
Tested Voltage: 9Vd.c. ("6F22" size battery x 1)

Limits for Radiated Emissions [FCC 47 CFR 15.209]:

Frequency Range [MHz]	Quasi-Peak Limits [μV/m]
1.705-30	300
30-88	100
88-216	150
216-960	200
Above960	500



TEST REPORT No: (5211)181-0001

Measurement Data

Test Result of (Transmission mode): PASS

Detection mode: Quasi-Peak

Frequency (MHz)	Polarity (H/V)	Antenna Factor and Cable Loss (dB/m)	Field Strength at 3m (dBμV/m)	Limit at 3m (dBμV/m)	Margin (dB)
99.72	H	11.2	31.6	43.5	-11.9
149.58	H	10.9	28.7	43.5	-14.8
199.44	H	10.0	30.4	43.5	-13.1
249.30	H	13.5	33.5	46.0	-12.5
299.16	H	14.4	28.8	46.0	-17.2
349.02	H	15.2	31.6	46.0	-14.4
398.88	H	17.1	29.9	46.0	-16.1
448.74	H	17.5	29.7	46.0	-16.3
498.60	H	18.6	30.7	46.0	-15.3
548.46	H	20.2	32.5	46.0	-13.5

Frequency (MHz)	Polarity (H/V)	Antenna Factor and Cable Loss (dB/m)	Field Strength at 3m (dBμV/m)	Limit at 3m (dBμV/m)	Margin (dB)
99.72	V	11.2	30.8	43.5	-12.7
149.58	V	10.9	28.6	43.5	-14.9
199.44	V	10.0	29.5	43.5	-14.0
249.30	V	13.5	31.9	46.0	-14.1
299.16	V	14.4	28.0	46.0	-18.0
349.02	V	15.2	33.5	46.0	-12.5
398.88	V	17.1	32.9	46.0	-13.1
448.74	V	17.5	31.4	46.0	-14.6
498.60	V	18.6	32.6	46.0	-13.4
548.46	V	20.2	33.0	46.0	-13.0

Note: Field Strength includes Antenna Factor and Cable Loss.

Receiver setting: RBW = 120KHz
VBW = 120KHz



TEST REPORT No: (5211)181-0001

26dB Bandwidth of Fundamental Emission

Test Requirement: FCC 47 CFR 15.235
Test Method: ANSI C63.4:2003 (Section 13.1.7)
Test Date(s): 2011-07-11
Temperature: 31.0 °C
Humidity: 81.0 %
Atmospheric Pressure: 100.8 kPa
Mode of Operation: Transmission mode
Tested Voltage: 9Vd.c. ("6F22" size battery x 1)

Test Method:

The bandwidth is measured at an amplitude level reduced from the reference level by a specified ratio. The reference level is the level of the highest amplitude signal observed from the transmitter at the fundamental frequency. Once the reference level is established, the equipment is conditioned with typical modulating signal to produce the worst-case (i.e. the widest) bandwidth.

Limits for 26dB Bandwidth of Fundamental Emission:

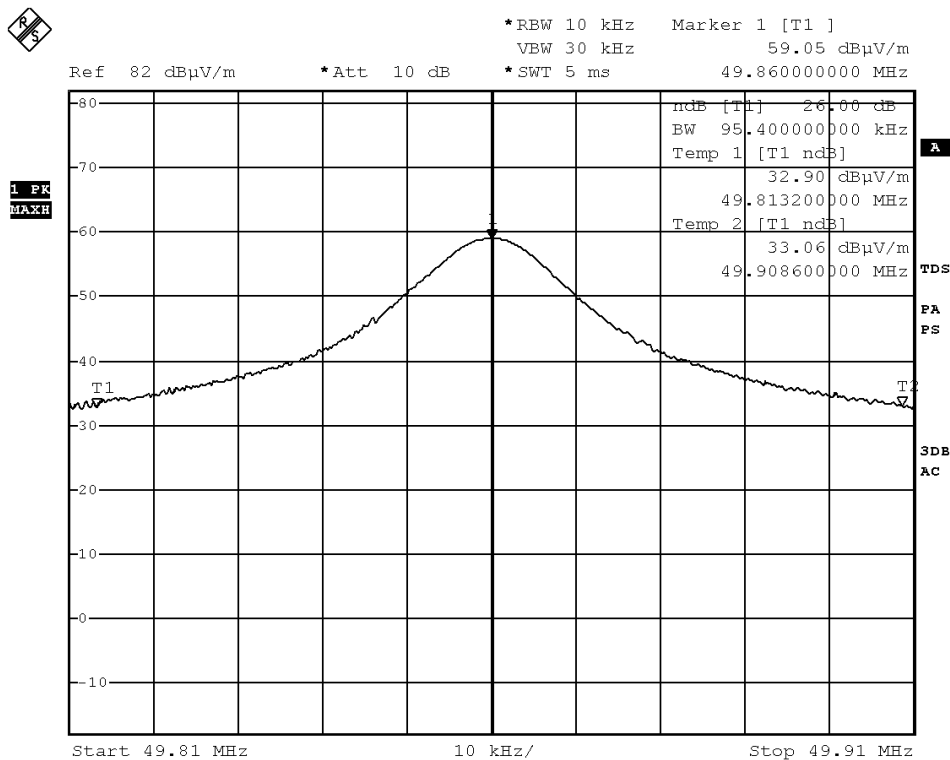
Frequency [MHz]	26dB Bandwidth [KHz]	Limits [MHz]
49.86	95.4	within 49.82-49.90



TEST REPORT No: (5211)181-0001

Measurement Data :

Test Result of 26dB Bandwidth of Fundamental Emission: PASS



Date: 11.JUL.2011 13:41:52



TEST REPORT No: (5211)181-0001

Duty Cycle Correction During 100msec:

Each function key sends a different series of characters, but each packet period (16.0msec) never exceeds a series of 4 long (1.3msec) and 10 short (0.5msec) pulses. Assuming any combination of short and long pulses maybe obtained due to encoding the worst case transmit duty cycle would be considered $(4 \times 1.3\text{msec}) + (10 \times 0.5\text{msec})$ per 16.0msec = 63.8% duty cycle.

Figure A through C shows the characteristics of the pulse train for one of these functions.

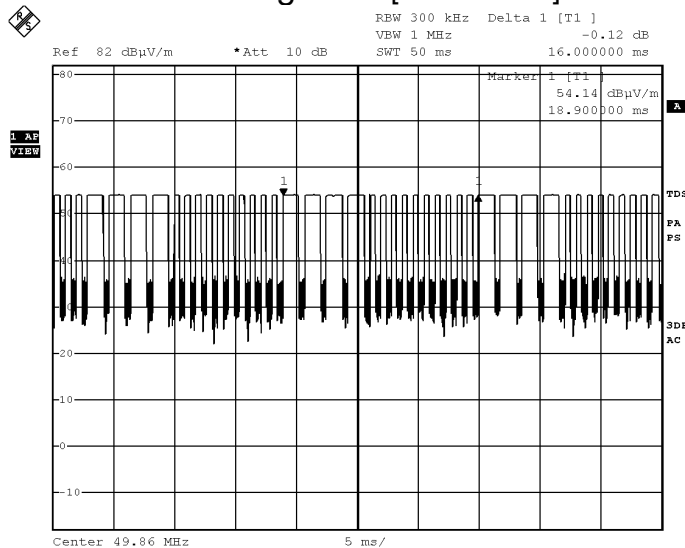
Remarks:

Duty Cycle Correction = $20\text{Log}(0.638) = -3.9\text{dB}$

The following figures [Figure A to Figure C] show the characteristics of the pulse train for one of these functions.

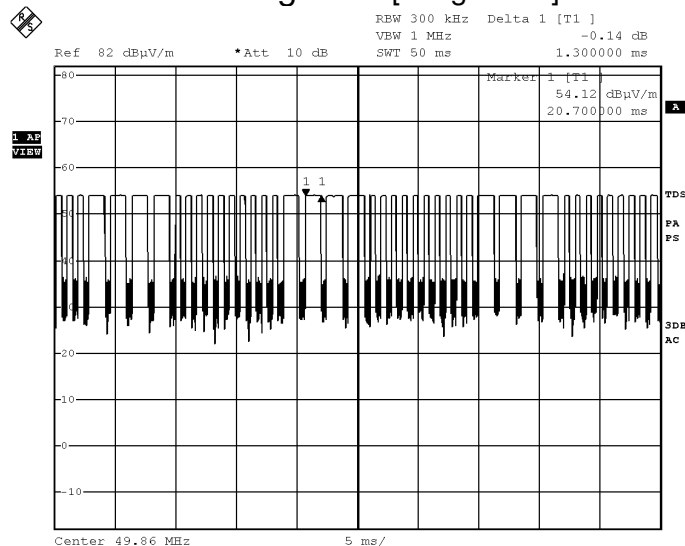
TEST REPORT No: (5211)181-0001

Figure A [Pulse Train]



Date: 11.JUL.2011 13:42:54

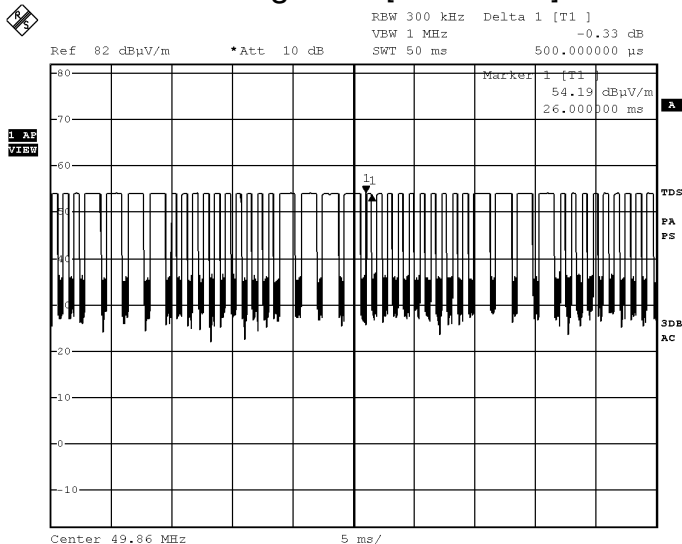
Figure B [Long Pulse]



Date: 11.JUL.2011 13:43:14

TEST REPORT No: (5211)181-0001

Figure C [Short Pulse]



Date: 11.JUL.2011 13:43:34

TEST REPORT No: (5211)181-0001

Photographs of EUT

Front View of the product



Rear View of the product



Battery compartment

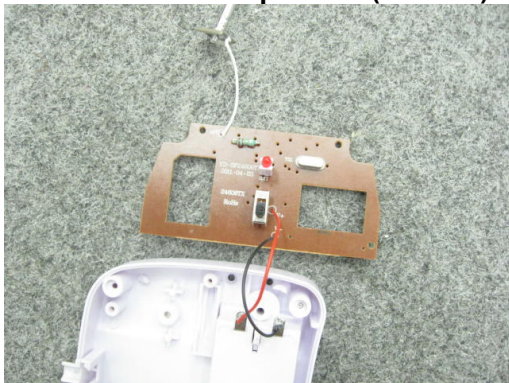


Battery Cover

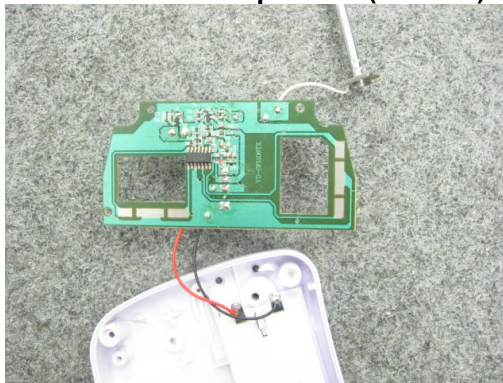


TEST REPORT No: (5211)181-0001

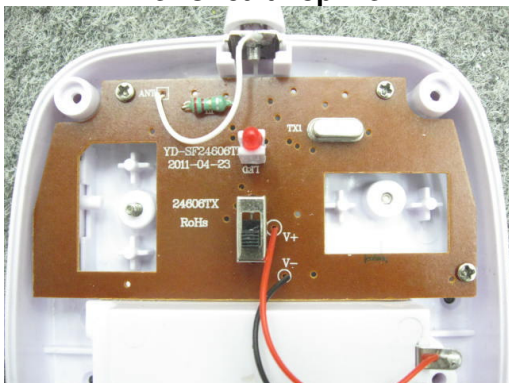
Front View of the product (Internal)



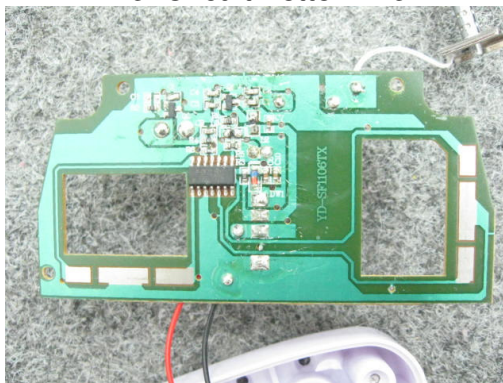
Rear View of the product (Internal)



Inner Circuit Top View



Inner Circuit Bottom View



Antenna



TEST REPORT No: (5211)181-0001

Measurement of Radiated Emission Test Set Up



******* End of Report *******