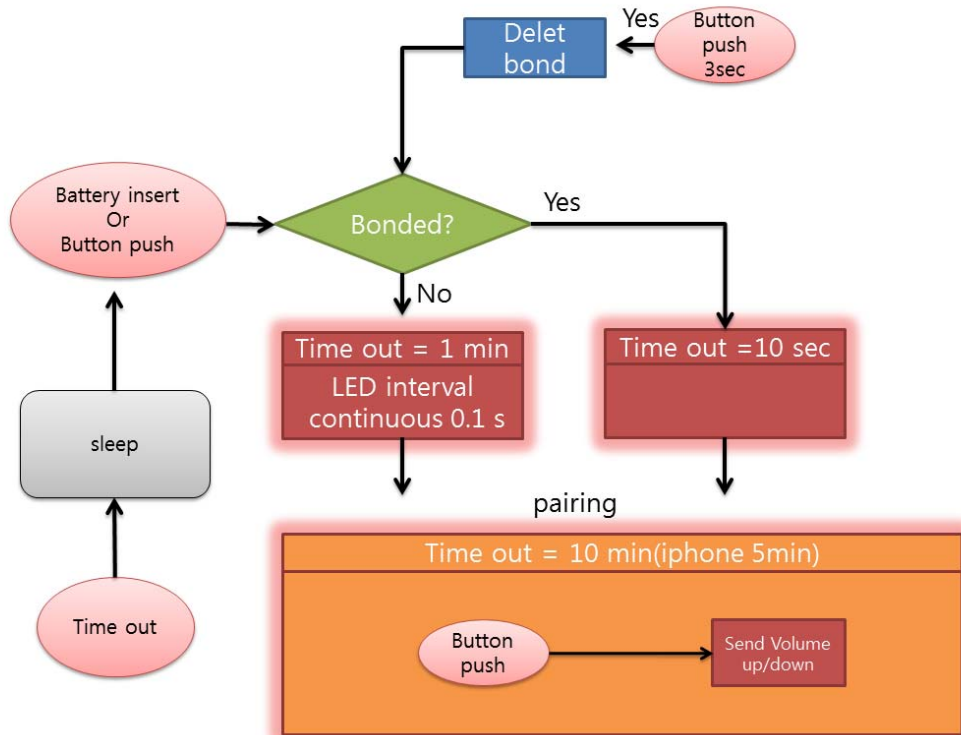


SC100 (HISY) OPERATIONAL DESCRIPTION

Operation Description

< SC100 (HISY) State diagram >



User's Guide

Congratulations on your purchase of the HISY Bluetooth Low Energy Smartphone Camera Remote without App.

Please read the Instruction for this product before using it.

The documentation provided will allow you to fully enjoy all the features this unit has to offer. Please save this manual for future reference. iPod, iPhone, or iPad are trademarks of Apple Inc. registered U.S.A and other countries.

The Bluetooth® word mark and logos are registered trademarks owned by Bluetooth SIG Inc.

Pairing between HISY and your Smartphone (First time only)

1. Make sure Bluetooth is "ON" in your Smartphone.

SC100 (HISY) OPERATIONAL DESCRIPTION



2. Press and hold the Hisy button until LED in red is blinking.
3. Check the "BLE Camera Remote" in the list of detected devices.
4. Tap the "BLE Camera Remote". "Pair" on the pop up appears.
5. Click "Pair" on the pop up. The LED in green blinks 4times and the pairing is made.

Note; The LED in green will blink 10 times and stop once the Hisy is out of range after paired with your phone

Taking photos

1. Open the camera mode
2. Press the Hisy button.



Deleting and Re-Pairing Your Hisy

1. Press "Reset" button of Hisy using thin and long tool. The LED in red is on.
2. Hold "Reset" button longer than 3 second. The LED in red is blinking. Previous paired data is deleted and it is ready for new pairing.

SC100 (HISY) OPERATIONAL DESCRIPTION



Specification

Frequency Range : ISM Band 2.4GHz

Bluetooth version : 4.0

Active distance : 10~30m / 30ft ~90ft

Battery life : CR2032 x 1 cell

MADE IN KOREA

FCC Statement

FCC Part 15.19

This device complies with part 15 of the FCC Rules. Operation is subject to the following two conditions: (1) This device may not cause harmful interference, and (2) this device must accept any interference received, including interference that may cause undesired operation.

FCC Part 15.21

Any changes or modifications (including the antennas) made to this device that are not expressly approved by the manufacturer may void the user's authority to operate the equipment.

RF Exposure Statement (2.1091)

FCC RF Radiation Exposure Statement: This equipment complies with FCC RF Radiation exposure limits set forth for an uncontrolled environment. This device and its antenna must not be co-located or operating in conjunction with any other antenna or transmitter.

This equipment should be installed and operated with a minimum distance of 5 mm between the radiator and your body.

RF du FCC d'exposition aux radiations: Cet équipement est conforme à l'exposition de la FCC rayonnements RF limites établies pour un environnement non contrôlé. L'antenne pour ce transmetteur ne doit pas être même endroit avec d'autres émetteur sauf conformément à la FCC procédures de produits Multi-émetteur.

Cet équipement doit être installé et utilisé avec une distance minimale de 5 mm entre le radiateur et votre corps.

IC Statement

This device complies with Industry Canada licence-exempt RSS standard(s).

Operation is subject to the following two conditions: (1) this device may not cause interference, and (2) this device must accept any interference, including interference that may cause undesired operation of the device.

Le présent appareil est conforme aux CNR d'Industrie Canada applicables aux appareils radio exempts de licence.

L'exploitation est autorisée aux deux conditions suivantes : (1) l'appareil ne doit pas produire de brouillage, et (2) l'utilisateur de l'appareil doit accepter tout brouillage radioélectrique subi, même si le brouillage est susceptible d'en compromettre le fonctionnement.